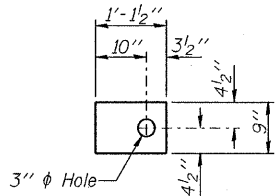


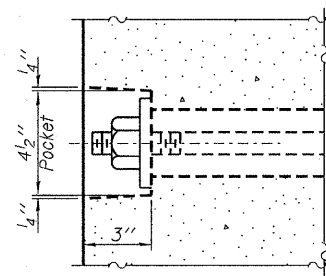
FABRIC BEARING PAD
(Interior 30 - Req'd.)



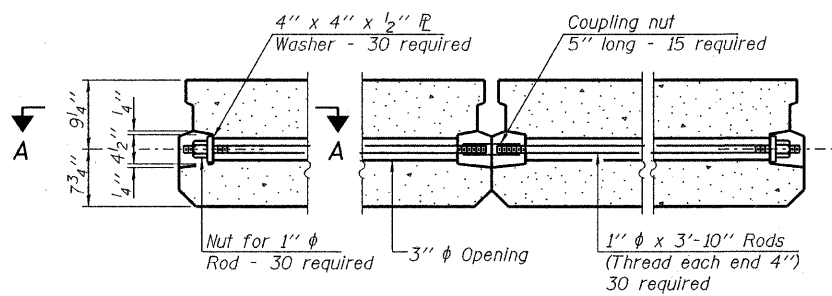
FABRIC BEARING PAD
(Exterior - 12 Req'd.)

FIXED

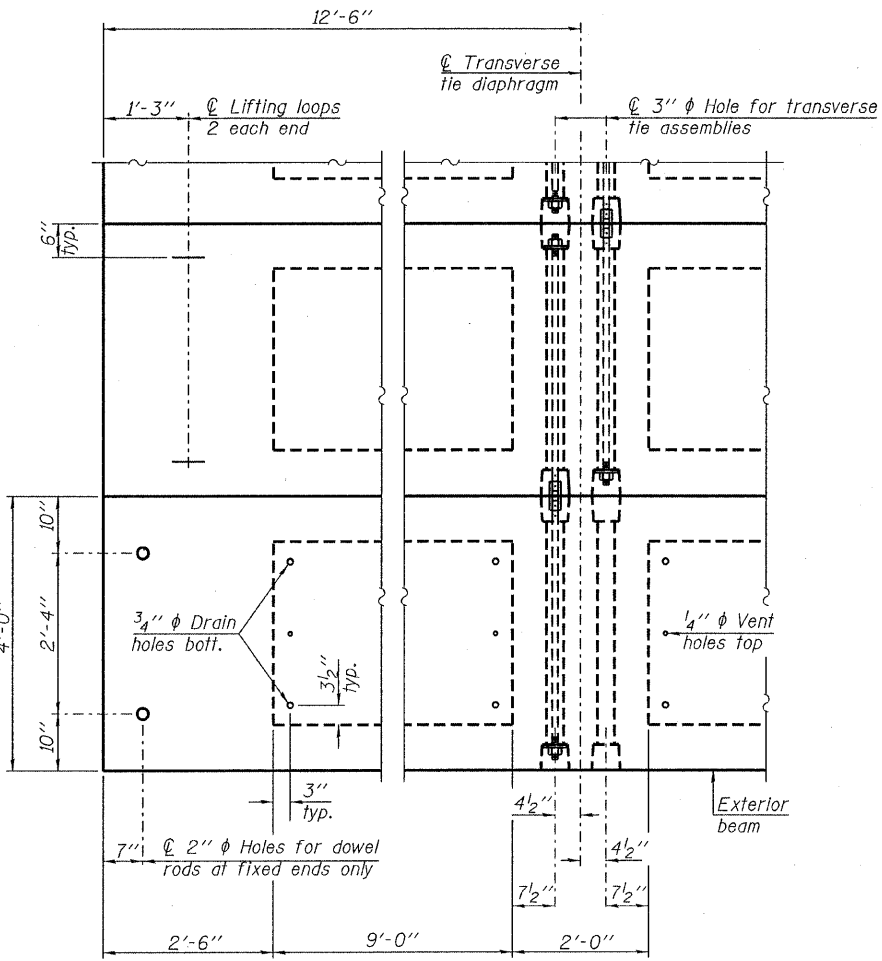
Note: Omit holes when using expansion bearings.



SECTION A-A



TYPICAL TRANSVERSE TIE ASSEMBLY



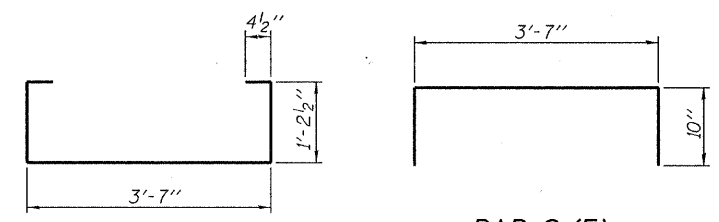
PLAN VIEW

Note: Connect beams in pairs with the transverse tie configuration shown.

DESIGNED - A.S.L.
CHECKED - S.W.M.
DRAWN - D.T.M.
CHECKED - D.A.B.

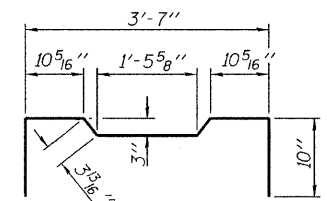
PD-1748-0D 10-1-08

- NOTES**
- Prestressing steel shall be uncoated high strength, low relaxation 7-wire strand, Grade 270. The nominal diameter shall be 1/2" and the nominal cross-sectional area shall be 0.153 sq. in.
 - The 1" rods in the transverse tie assembly shall be tightened to a snug fit and the threads set. Pockets on exterior faces of bridge shall be filled with grout after transverse tie assembly is in place.
 - Reinforcement bars shall conform to ASTM A 706, Grade 60. (See Special Provisions).
 - Two 1/8" fabric adjusting shims of the dimensions of the exterior bearing pad shall be provided for each bearing pad location.
 - A minimum 2 1/2" diameter lifting pin shall be used to engage the lifting loops during handling.
 - Corrosion Inhibitor, per Article 1020.05(b)(12) and 1021.06 of the Standard Specifications, shall be used in the concrete for precast prestressed concrete deck beams.
 - Compressive strength of prestressed concrete, f'c, shall be 6000 psi.
 - Compressive strength of prestressed concrete at release, f'ci, shall be 5000 psi.

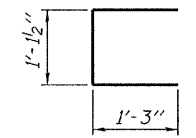


BAR S(E)

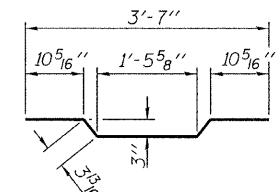
BAR S₁(E)



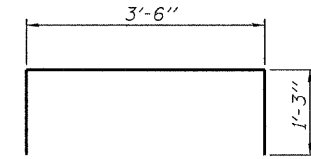
BAR S₂(E)



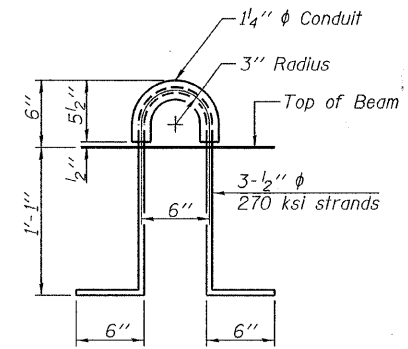
BAR U(E)



BAR A₁(E)



BAR U₁(E)



LIFTING LOOP DETAIL

BILL OF MATERIAL

Precast Prestressed Conc. Deck Bms. (17" depth)	Sq. Ft.	1,800
---	---------	-------

SUPERSTRUCTURE
17" X 48" PPC DECK BEAM DETAILS
STRUCTURE NO. 096-3451

HAMPTON, LENZINI AND RENWICK, INC. CIVIL ENGINEERS - STRUCTURAL ENGINEERS - LAND SURVEYORS 3085 STEVENSON DRIVE, SUITE 201 SPRINGFIELD, ILLINOIS 62703 217.546.3400 www.hlrenwicking.com 184.000959 ILLINOIS PROFESSIONAL DESIGN FIRM LS / PE / SE CORPORATION PROJECT NUMBER: 09.0060.130 DATE: 06/22/09	SHEET NO. 3	T.R.	SECTION	COUNTY	TOTAL SHEETS	SHEET NO.
	10 SHEETS	622	08-15143-00-BR	WAYNE	14	7
LEECH ROAD DISTRICT			CONTRACT NO. 95607			
FED. ROAD DIST. NO.		ILLINOIS	FED. AID PROJECT			