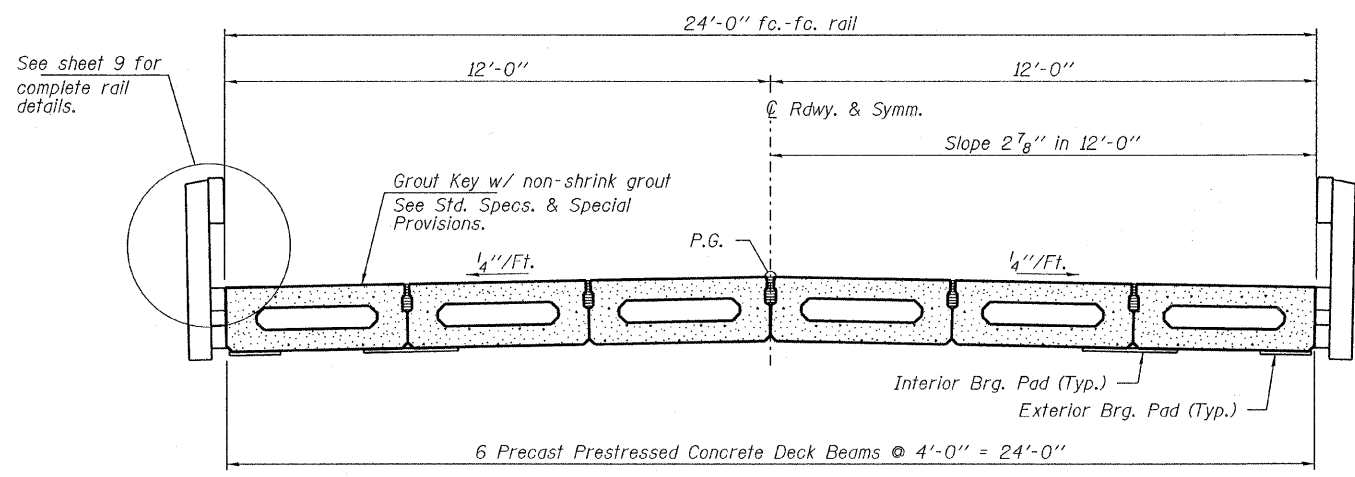
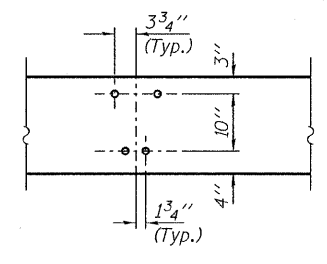


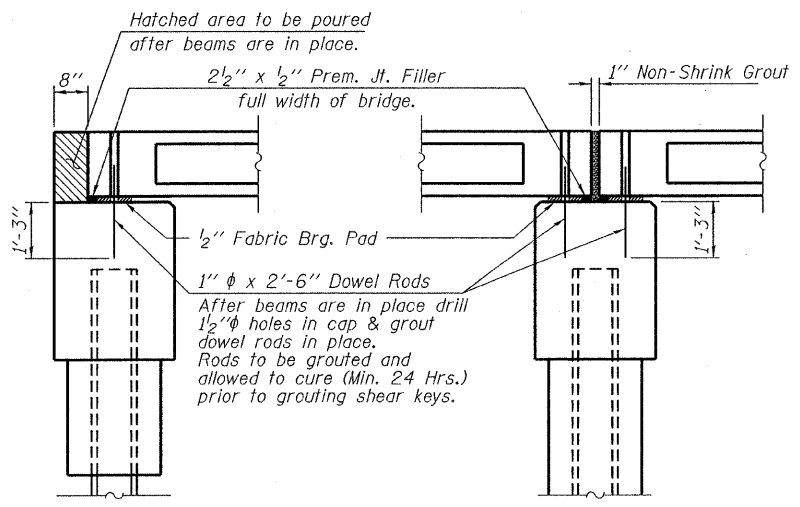
ELEVATION
Showing Rail Post Spaces
See sheet 5 of 10 for Railing Details.



CROSS SECTION
See sheets 2 & 3 of 10 for Superstructure.



DETAIL A



SECTION AT ABUTMENTS
© Rt. L's

SECTION AT PIERS
© Rt. L's

DESIGNED - A.S.L.
CHECKED - S.W.M.
DRAWN - D.T.M.
CHECKED - D.A.B.

SUPERSTRUCTURE DETAILS
STRUCTURE NO. 096-3451

HAMPTON, LENZINI AND RENWICK, INC.
CIVIL ENGINEERS - STRUCTURAL ENGINEERS - LAND SURVEYORS
3085 STEVENSON DRIVE, SUITE 201
SPRINGFIELD, ILLINOIS 62703
217.546.3400 www.hlrengineering.com

HLR

184.00059
ILLINOIS PROFESSIONAL DESIGN FIRM LS / PE / SE CORPORATION
PROJECT NUMBER: 09.0060.130 DATE: 06/22/09

SHEET NO. 4 10 SHEETS	T.R.	SECTION	COUNTY	TOTAL SHEETS	SHEET NO.
	622	08-15143-00-BR	WAYNE	14	8
LEECH ROAD DISTRICT			CONTRACT NO. 95607		
FED. ROAD DIST. NO.		ILLINOIS	FED. AID PROJECT		