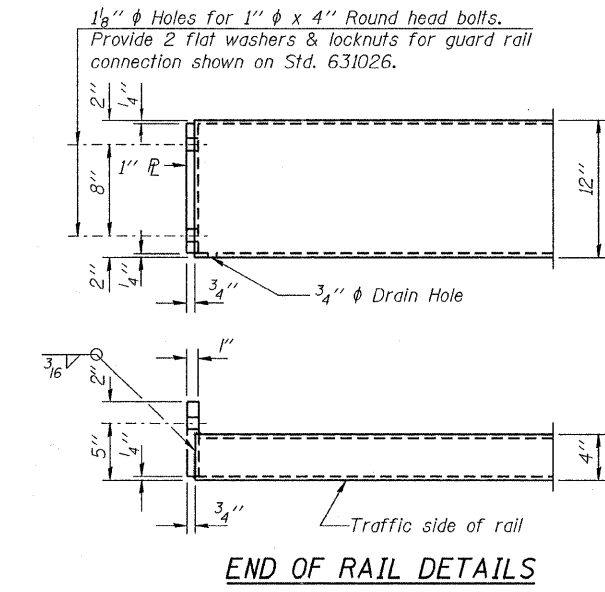
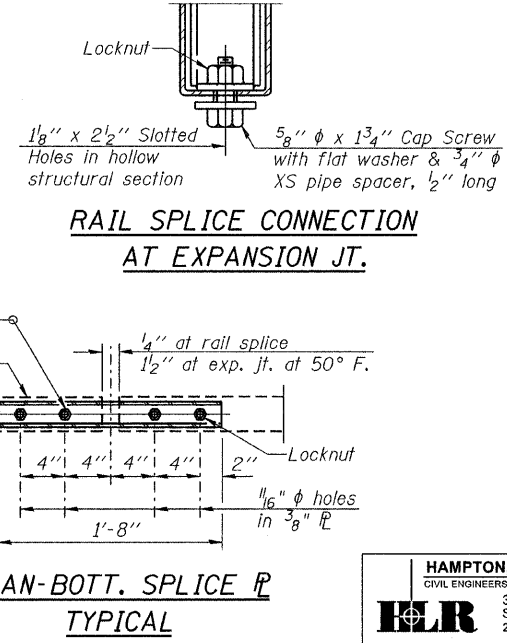
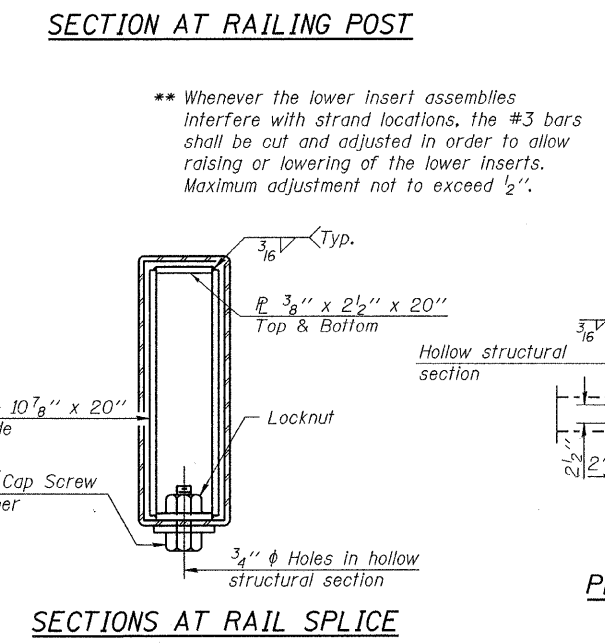
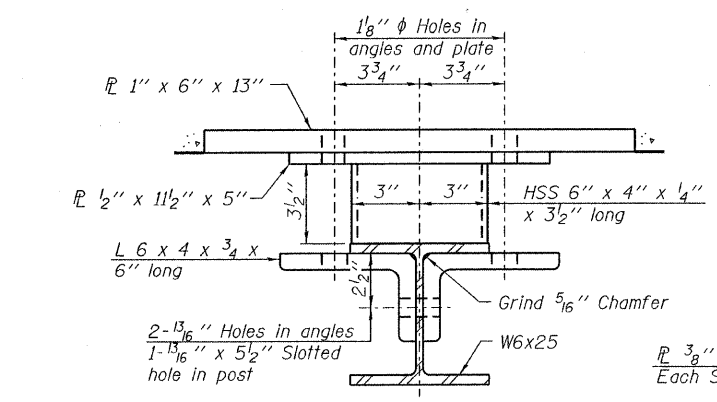
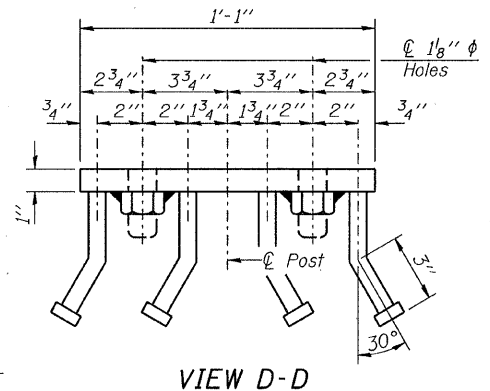
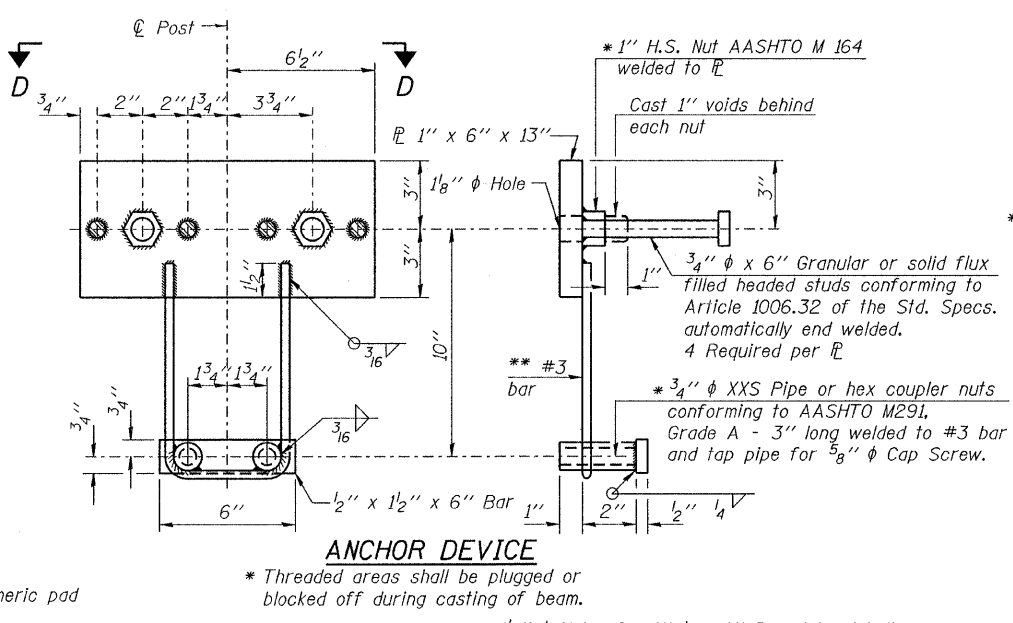
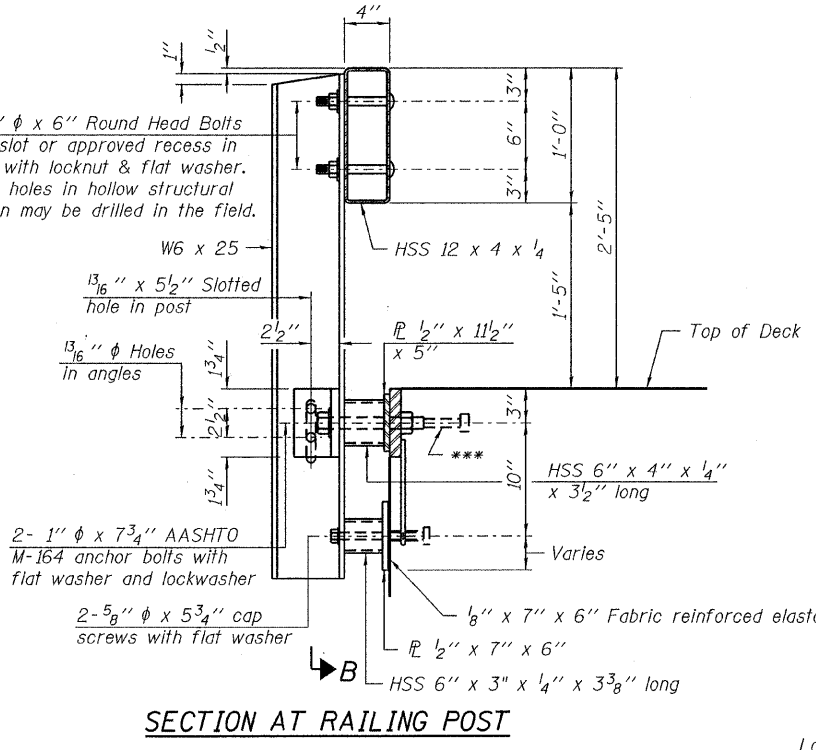
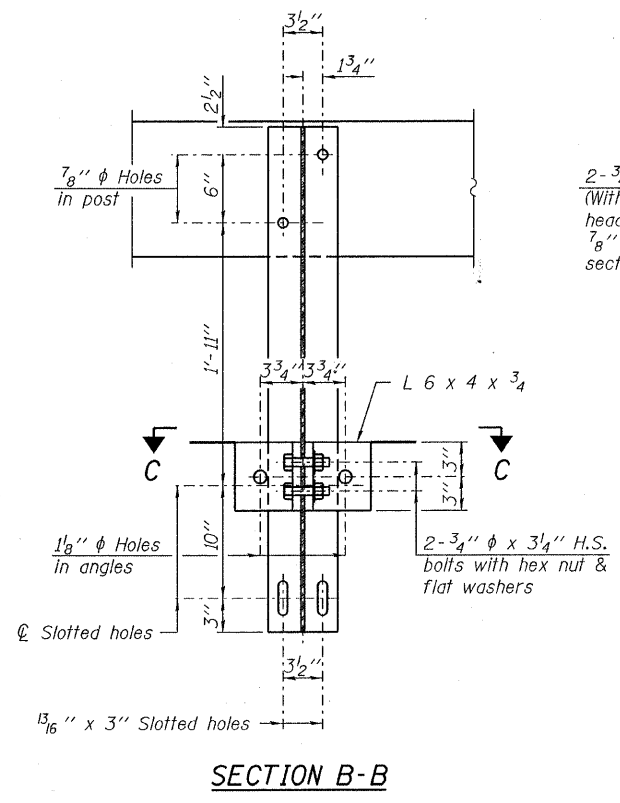


Note: Cost of curled end sections shall be included with the Steel Railing. (4 Required)

Notes:  
 All field drilled holes shall be coated with an approved zinc rich paint before erection.  
 For multi-span bridges, sufficient 1/4" x 6" x 1'-2" galvanized steel shims shall be provided to align rail between adjacent spans. Cost included with Steel Railing, Type S-1.  
 All steel rail elements shall be galvanized according to Article 509.05 of the Standard Specifications.  
 \*\*\* The studs of the anchor devices shall be placed below the top reinforcement bars and the outermost longitudinal reinforcement bar shall be placed directly above the studs of the rail post anchor device.



**BILL OF MATERIAL**

Item	Unit	Quantity
Steel Railing, Type S-1	Foot	147

DESIGNED - A.S.L.  
 CHECKED - S.W.M.  
 DRAWN - D.T.M.  
 CHECKED - D.A.B.  
 R-23A

10-1-08 (10'-9" Maximum Post Spacing)

**HAMPTON, LENZINI AND RENWICK, INC.**  
 CIVIL ENGINEERS - STRUCTURAL ENGINEERS - LAND SURVEYORS  
 3085 STEVENSON DRIVE, SUITE 201  
 SPRINGFIELD, ILLINOIS 62703  
 217.546.3400 www.hlrengineering.com  
 184.00050  
 ILLINOIS PROFESSIONAL DESIGN FIRM LS / PE / SE CORPORATION  
 PROJECT NUMBER: 09.0060.130 DATE: 06/22/09

SHEET NO. 5	T.R.	SECTION	COUNTY	TOTAL SHEETS	SHEET NO.
10 SHEETS	622	08-15143-00-BR	WAYNE	14	9
LEECH ROAD DISTRICT			CONTRACT NO. 95607		
FED. ROAD DIST. NO.		ILLINOIS	FED. AID PROJECT		

**STEEL RAILING, TYPE S-1  
 STRUCTURE NO. 096-3451**