

P:\00184a\DWG\LATEST\DWGS\CBJG 11-06\Sidewalk Plans\PLAN & PROFILES.dwg 5/22/2008 1:55:08 PM CDT

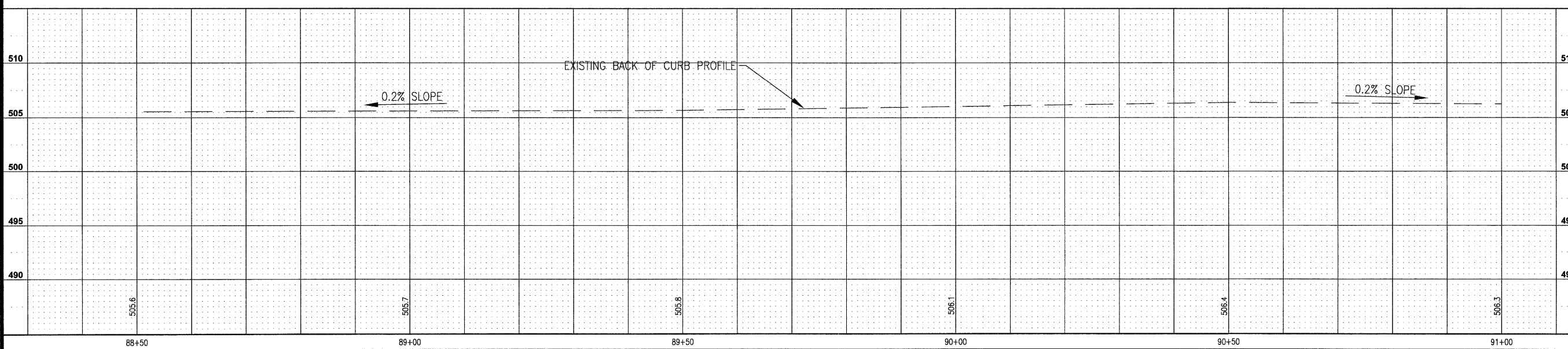
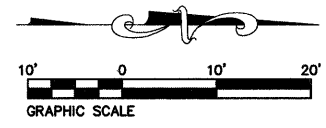
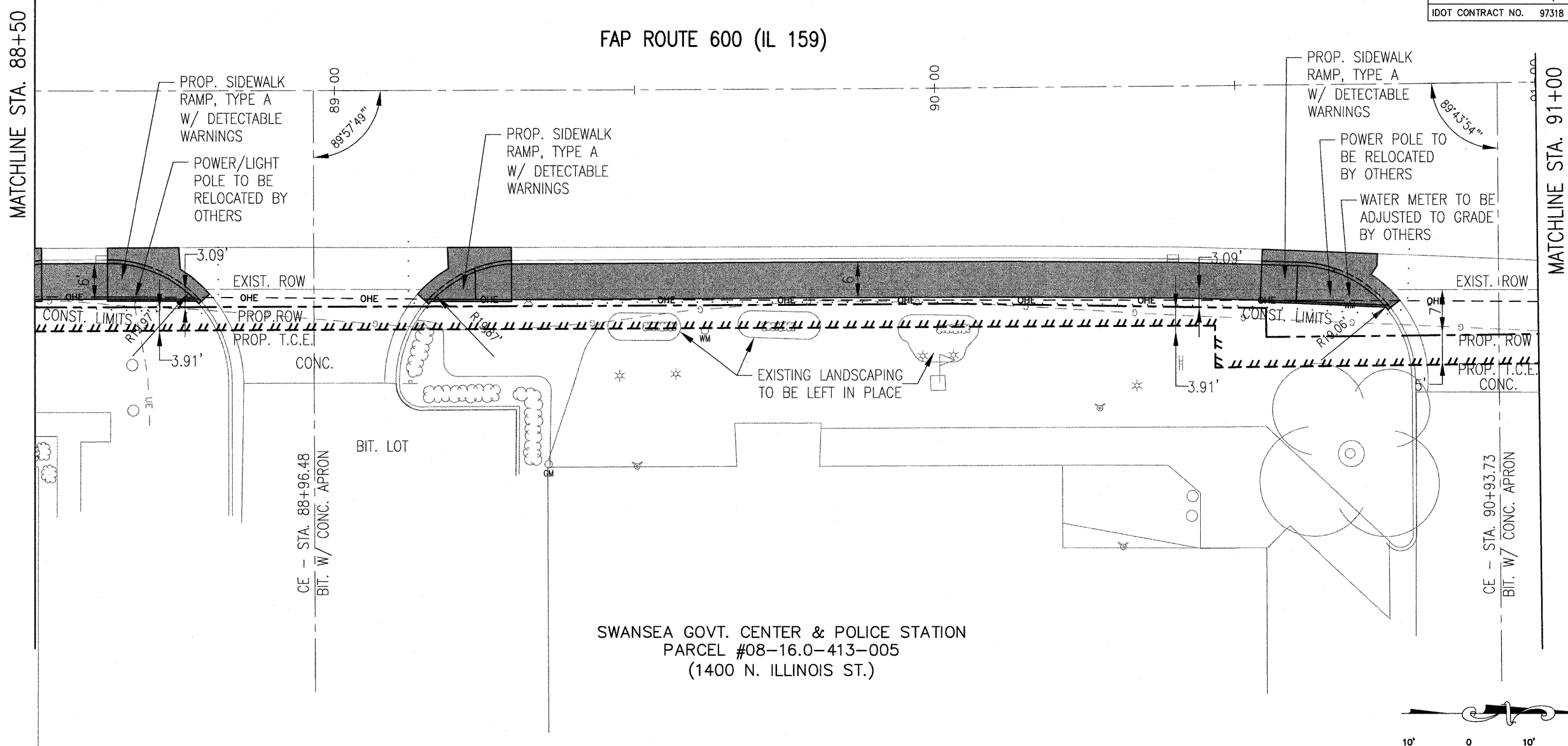
FAP ROUTE	IDOT SECTION	COUNTY
600	01-00026-00-SW	ST. CLAIR
FEDERAL AID PROJECT		ILLINOIS
IDOT JOB NO.	CMF-0600(058)	
IDOT CONTRACT NO.	97318	

THOUVENOT, WADE & MOERCHEN, INC.
ENGINEERS ♦ SURVEYORS ♦ PLANNERS



- CORPORATE OFFICE**
4940 OLD COLLINSVILLE RD.
SWANSEA, ILLINOIS 62226
TEL (618) 624-4488
FAX (618) 624-6688
corp@twm-inc.com
- CARBONDALE OFFICE**
206 WEST COLLEGE STREET
CARBONDALE, ILLINOIS 62901
TEL (618) 549-8844
FAX (618) 549-8450
carbondale@twm-inc.com
- EDWARDSVILLE OFFICE**
1015B CENTURY DRIVE
EDWARDSVILLE, ILLINOIS 62025
TEL (618) 656-4040
FAX (618) 656-4343
edwardsville@twm-inc.com
- ST. LOUIS OFFICE**
1001 CRAIG ROAD, SUITE 260
ST. LOUIS, MISSOURI 63146
TEL (314) 236-5052
FAX (314) 872-2194
stlouis@twm-inc.com
- WATERLOO OFFICE**
113 SOUTH MAIN STREET
WATERLOO, ILLINOIS 62298
TEL (618) 939-5050
FAX (618) 939-3938
waterloo@twm-inc.com

PROFESSIONAL REGISTRATIONS	LICENSE NO.
ILLINOIS PROFESSIONAL DESIGN FIRM	184-001220
PROFESSIONAL ENGINEERING CORP.	62-035370
PROFESSIONAL STRUCTURAL ENGR. CORP.	81-005202
ILLINOIS PROF. LAND SURVEYING CORP.	048-000029
MISSOURI PROFESSIONAL ENGR. CORP.	NC 001528
MISSOURI LAND SURVEYING CORP.	NC 000346



SIDEWALK PLAN AND PROFILE
PEDESTRIAN SIDEWALKS ALONG ILLINOIS ROUTE 159 VILLAGE OF SWANSEA ST. CLAIR COUNTY, ILLINOIS

REV.	DATE	DESCRIPTION
△		
△		
△		

PLAN STATUS:

100%
7/15/09

ISSUED FOR REVIEW ISSUED FOR BIDDING
 ISSUED FOR CONSTR. RECORD DRAWING

DRAWN BY: BJJ SHEET NO: **10**
DESIGNED BY: BJJ OF 83 SHEETS
CHECKED BY: JWF
APPROVED BY: SJK PROJECT DESCRIPTION: SWANSEA SIDEWALKS
PROJECT NUMBER: T16000184A