

P:\001846\DWG\LATEST DWGS (BJG 11-06)\DWG\COVER, NOTES, SCHEDULES, TYPICALS, & DETAILS.dwg 7/26/2007 6:55:20 AM CDT

FED. ROUTE	IDOT SECTION	COUNTY
600	01-00026-00-SW	ST. CLAIR
FEDERAL AID PROJECT	ILLINOIS	
IDOT JOB NO.	CMF-0600(058)	
IDOT CONTRACT NO.	97318	

THOUVENOT, WADE & MOERCHEN, INC.
ENGINEERS ♦ SURVEYORS ♦ PLANNERS



- CORPORATE OFFICE**
4940 OLD COLLINSVILLE RD.
SWANSEA, ILLINOIS 62226
TEL (618) 624-4488
FAX (618) 624-6688
corp@twm-inc.com
- CARBONDALE OFFICE**
206 WEST COLLEGE STREET
CARBONDALE, ILLINOIS 62901
TEL (618) 549-8844
FAX (618) 549-8450
carbondale@twm-inc.com
- EDWARDSVILLE OFFICE**
1015B CENTURY DRIVE
EDWARDSVILLE, ILLINOIS 62025
TEL (618) 656-4040
FAX (618) 656-4343
edwardsville@twm-inc.com
- ST. LOUIS OFFICE**
1001 CRAIG ROAD, SUITE 260
ST. LOUIS, MISSOURI 62146
TEL (314) 236-5052
FAX (314) 872-2194
stlouis@twm-inc.com
- WATERLOO OFFICE**
113 SOUTH MAIN STREET
WATERLOO, ILLINOIS 62298
TEL (618) 939-5050
FAX (618) 939-3938
waterloo@twm-inc.com

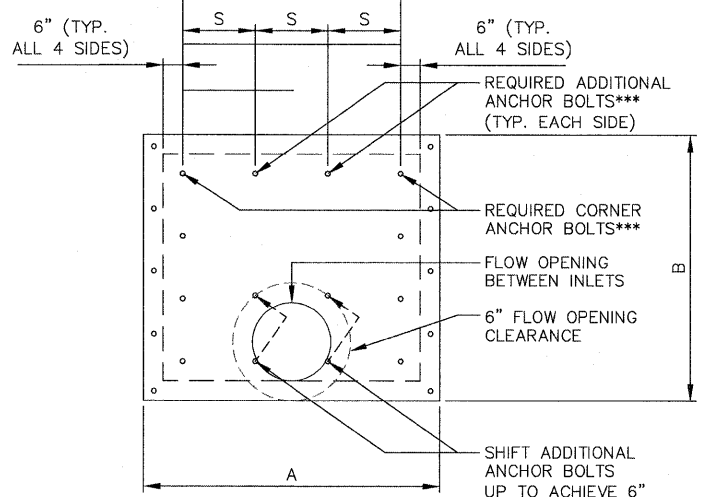
PROFESSIONAL REGISTRATIONS	LICENSE NO.
ILLINOIS PROFESSIONAL DESIGN FIRM	184-001220
PROFESSIONAL ENGINEERING CORP.	62-036370
PROFESSIONAL STRUCTURAL ENGR. CORP.	81-005202
ILLINOIS PROF. LAND SURVEYING CORP.	048-000029
MISSOURI PROFESSIONAL ENGR. CORP.	NC 001528
MISSOURI LAND SURVEYING CORP.	NC 000348

ADJOINING STRUCTURE ANCHOR BOLTS

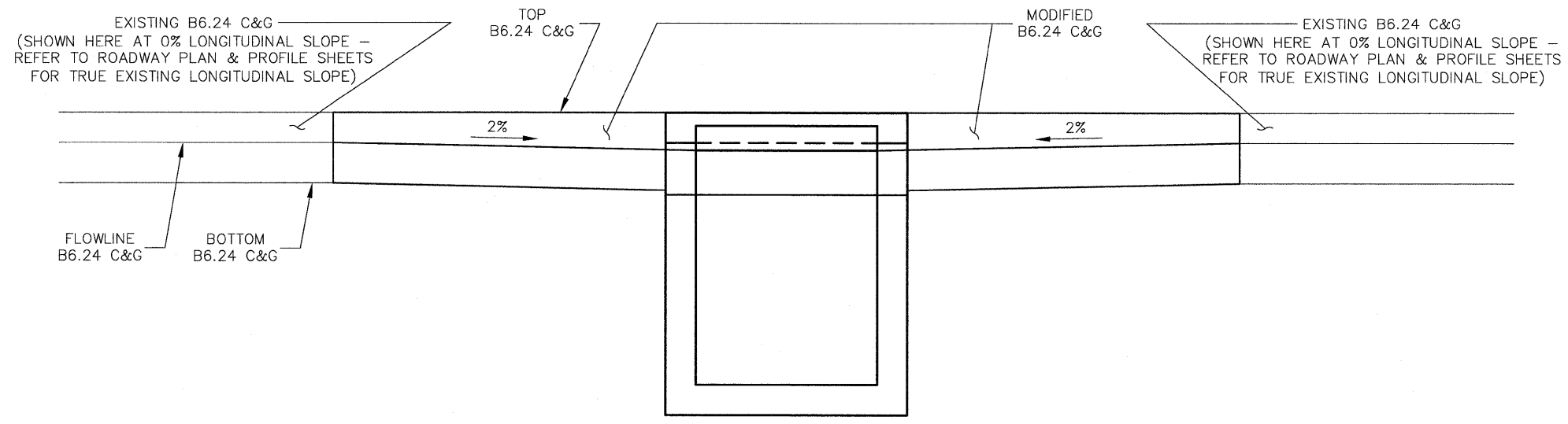
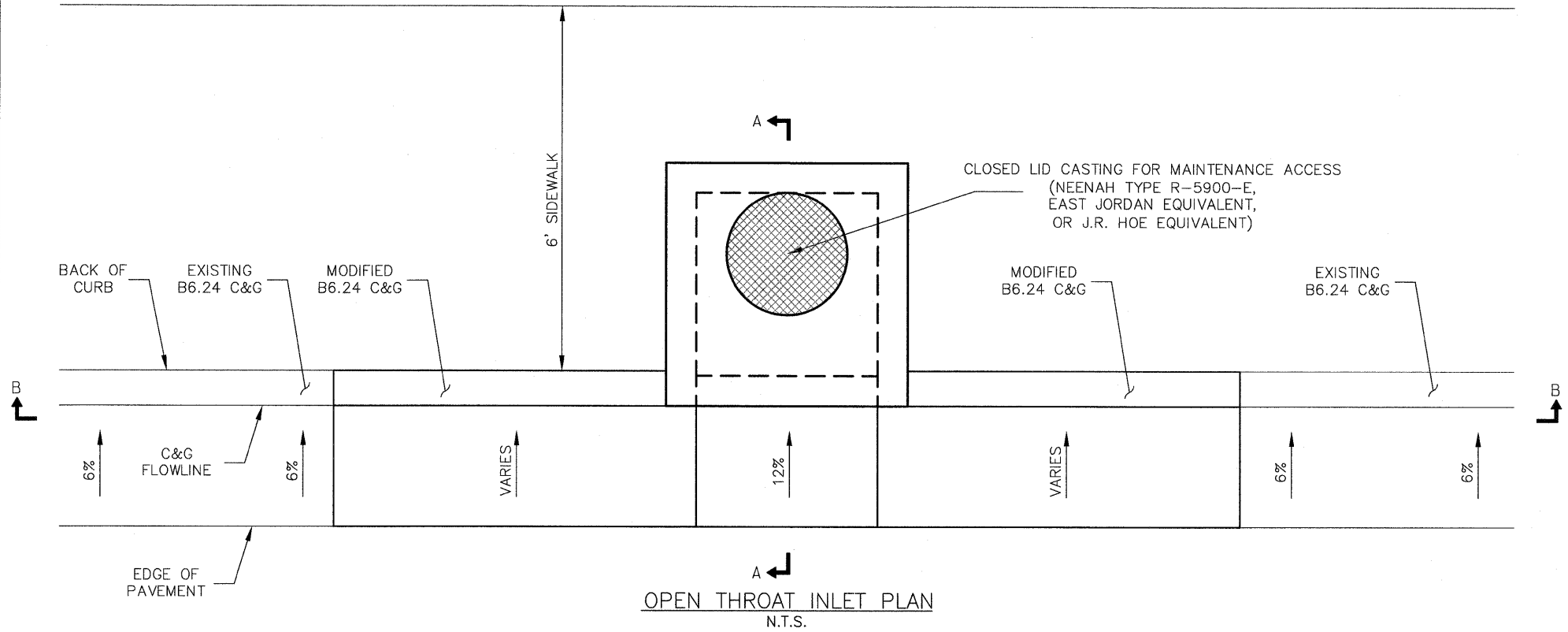
DIMENSION OF STRUCTURE WALL (FEET)	NO. OF 3/4" ANCHOR BOLTS REQ'D PER SIDE* (INCLUDING CORNER ANCHOR BOLTS)
3.0	3
4.0	4
5.0	4
6.0	5
7.0	6
8.0	6
9.0	7
10.0	8
11.0	8
12.0	9

NOTES:
 * IF MORE THAN TWO (2) BOLTS ARE REQUIRED PER SIDE, PLACE ANCHOR BOLTS AS SHOWN IN INCLUDED DETAIL.
 ** USE MINIMUM OF ONE (1) ANCHOR BOLT AT EACH CORNER.
 *** ANCHOR BOLTS SHALL BE 3/4" DIAMETER HOOKED BOLTS. HOOKED BOLTS SHALL EXTEND A MINIMUM OF 9" INTO NEW CONCRETE.

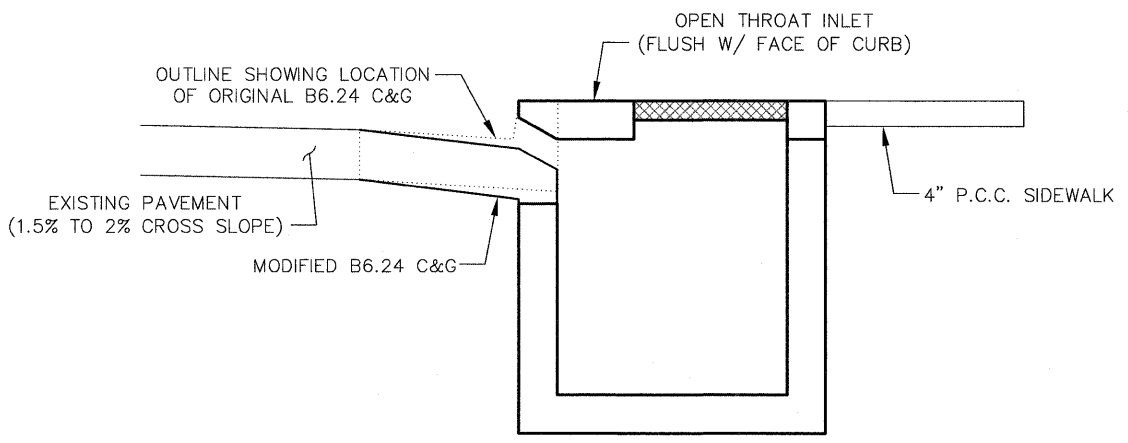
SEE TABLE FOR NUMBER OF ANCHOR BOLTS PER SIDE (IF ADDITIONAL ANCHOR BOLTS ARE REQUIRED, PLACE ADDITIONAL ANCHOR BOLTS BETWEEN CORNER ANCHOR BOLTS W/ EQUAL SPACING "S" BETWEEN ALL BOLTS)



OPEN THROAT INLET ANCHOR SPACING DETAIL FOR ADJOINING STRUCTURES



SECTION B-B N.T.S.



SECTION A-A

- NOTES:
1. OPENING HEIGHT IS 4.92" < 5". NO REBAR WILL BE REQUIRED ACROSS OPENING (AS SPECIFIED ON HIGHWAY STANDARD 604066).
 2. A 3'x3' OPEN THROAT INLET IS ILLUSTRATED ON THIS DETAIL. A LARGER INLET OR MULTIPLE INLETS MAY BE REQUIRED TO INTERCEPT ALL GUTTER FLOW - PREVENTING GUTTER FLOW BYPASS. IF MULTIPLE INLETS ARE SPECIFIED ON THE PLANS, THE GUTTER PAN SLOPE INDICATED IN NOTE #3 SHALL EXTEND ACROSS BOTH INLET OPENINGS (INCLUDING THE PORTION OF GUTTER DIRECTLY IN FRONT OF THE ADJOINING DRAINAGE STRUCTURE WALLS).
 3. GUTTER PAN SLOPE AT INLET IS 12% (AS ON HIGHWAY STANDARD 604066).
 4. TOTAL CURB HEIGHT AT STRUCTURE IS 7.53".
 5. MODIFIED B6.24 C&G INVOLVES VARIATION IN GUTTER PAN SLOPE AND CURB HEIGHT ONLY. ALL OTHER DIMENSIONS SHALL CONFORM TO IDOT HIGHWAY STANDARD 606001.

OPEN THROAT INLET DETAILS
 PEDESTRIAN SIDEWALKS
 ALONG ILLINOIS ROUTE 159
 VILLAGE OF SWANSEA
 ST. CLAIR COUNTY, ILLINOIS

REV.	DATE	DESCRIPTION

PLAN STATUS:	
100%	
7/15/09	
<input type="checkbox"/> ISSUED FOR REVIEW	<input type="checkbox"/> ISSUED FOR BIDDING
<input checked="" type="checkbox"/> ISSUED FOR CONSTR.	<input type="checkbox"/> RECORD DRAWING
DRAWN BY: BJG	SHEET
DESIGNED BY: BJG	49
CHECKED BY: JWF	OF 83 SHEETS
APPROVED BY: SJK	PROJECT DESCRIPTION
PROJECT NUMBER: T16000184A	SWANSEA SIDEWALKS