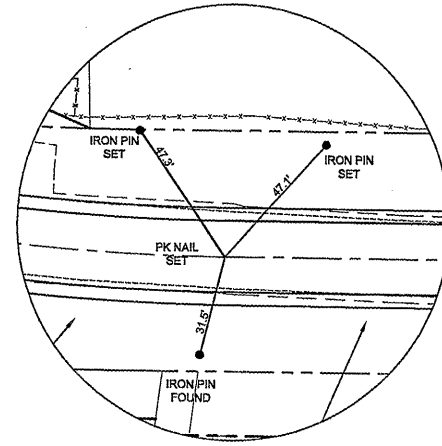
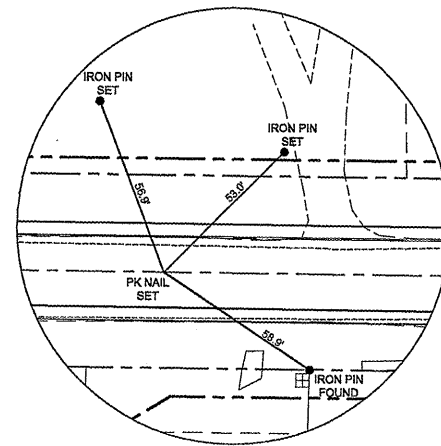


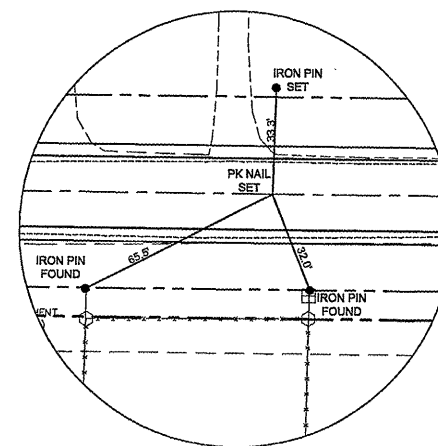
F.A.S. RTE.	SECTION	COUNTY	TOTAL SHEETS	SHEET NO.
748	06-00053-00-RS	JERSEY	110	14
STA. NA	TO STA. NA			
CONTRACT # 97375		FAP NO. RS-0748(109)		



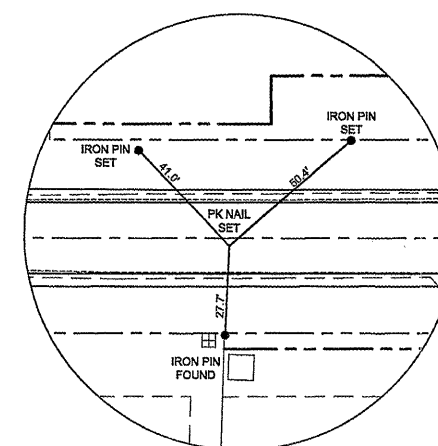
CONTROL POINT #31
DELHI ROAD
PT STA = 289+44.19



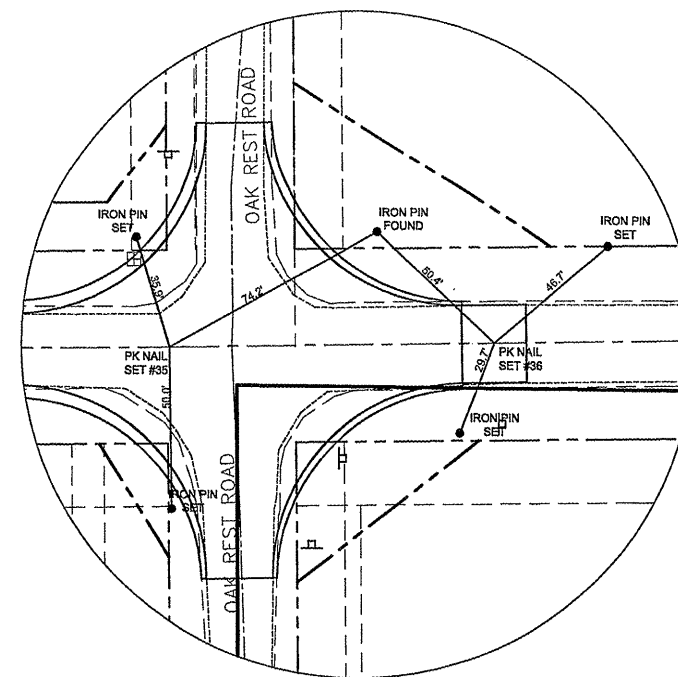
CONTROL POINT #32
DELHI ROAD
STA = 275+00



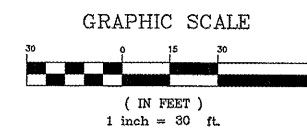
CONTROL POINT #33
DELHI ROAD
PC STA = 276+73.97



CONTROL POINT #34
DELHI ROAD
PI STA = 280+36.32



CONTROL POINT #35 & #36
DELHI ROAD
PT STA = 283+96.63
PT STA = 285+13.66



REVISIONS	DATE

ILLINOIS DEPARTMENT OF TRANSPORTATION

REFERENCE TIES

DELHI ROAD
F.A.S. ROUTE 748
SECTION 06-00053-00-RS
JERSEY COUNTY