

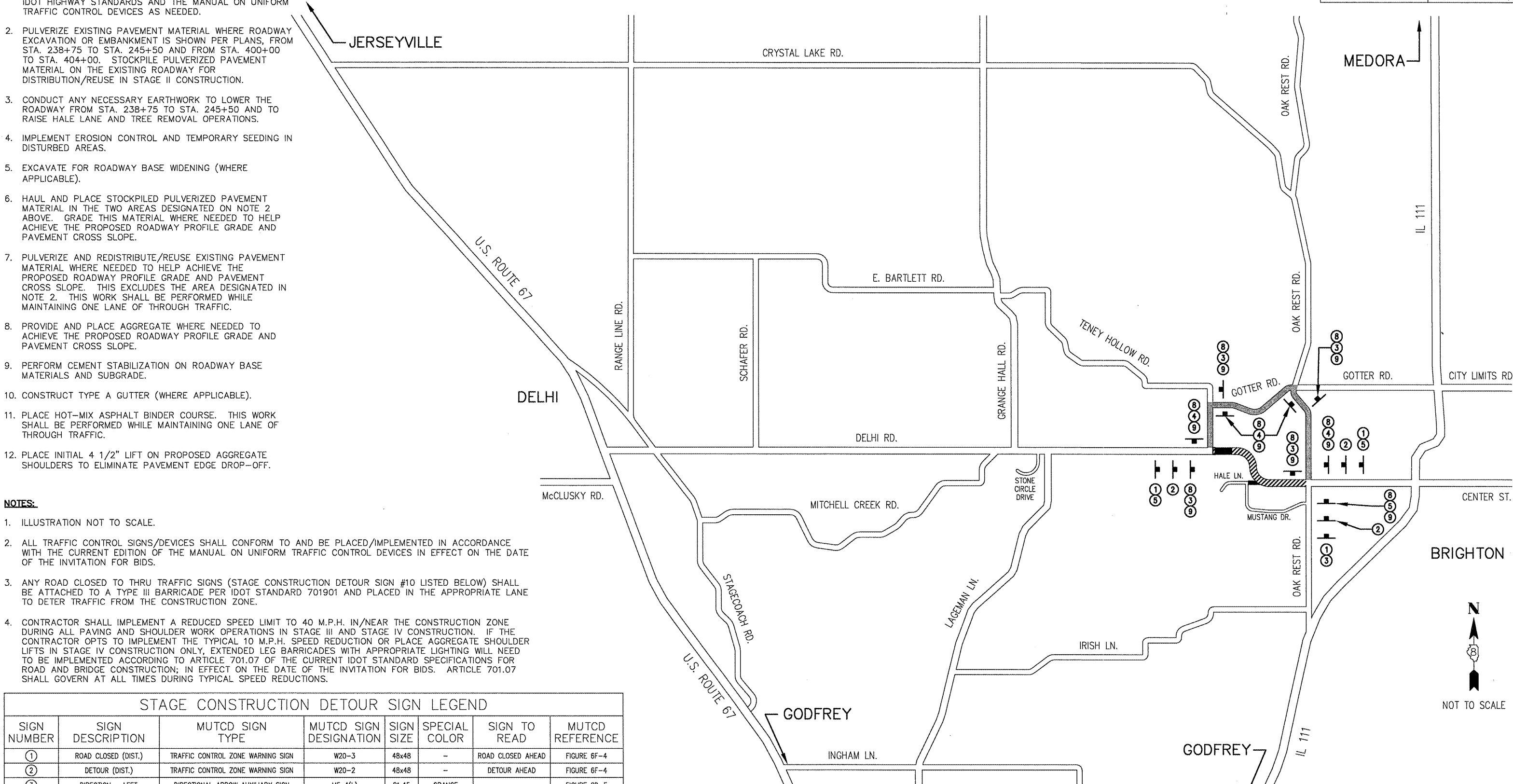
**INTENDED STAGE II ITINERARY:**

1. IMPLEMENT ALL TRAFFIC CONTROL DEVICES ACCORDING TO THIS STAGING/TRAFFIC CONTROL PLAN, ANY APPLICABLE IDOT HIGHWAY STANDARDS AND THE MANUAL ON UNIFORM TRAFFIC CONTROL DEVICES AS NEEDED.
2. PULVERIZE EXISTING PAVEMENT MATERIAL WHERE ROADWAY EXCAVATION OR EMBANKMENT IS SHOWN PER PLANS, FROM STA. 238+75 TO STA. 245+50 AND FROM STA. 400+00 TO STA. 404+00. STOCKPILE PULVERIZED PAVEMENT MATERIAL ON THE EXISTING ROADWAY FOR DISTRIBUTION/REUSE IN STAGE II CONSTRUCTION.
3. CONDUCT ANY NECESSARY EARTHWORK TO LOWER THE ROADWAY FROM STA. 238+75 TO STA. 245+50 AND TO RAISE HALE LANE AND TREE REMOVAL OPERATIONS.
4. IMPLEMENT EROSION CONTROL AND TEMPORARY SEEDING IN DISTURBED AREAS.
5. EXCAVATE FOR ROADWAY BASE WIDENING (WHERE APPLICABLE).
6. HAUL AND PLACE STOCKPILED PULVERIZED PAVEMENT MATERIAL IN THE TWO AREAS DESIGNATED ON NOTE 2 ABOVE. GRADE THIS MATERIAL WHERE NEEDED TO HELP ACHIEVE THE PROPOSED ROADWAY PROFILE GRADE AND PAVEMENT CROSS SLOPE.
7. PULVERIZE AND REDISTRIBUTE/REUSE EXISTING PAVEMENT MATERIAL WHERE NEEDED TO HELP ACHIEVE THE PROPOSED ROADWAY PROFILE GRADE AND PAVEMENT CROSS SLOPE. THIS EXCLUDES THE AREA DESIGNATED IN NOTE 2. THIS WORK SHALL BE PERFORMED WHILE MAINTAINING ONE LANE OF THROUGH TRAFFIC.
8. PROVIDE AND PLACE AGGREGATE WHERE NEEDED TO ACHIEVE THE PROPOSED ROADWAY PROFILE GRADE AND PAVEMENT CROSS SLOPE.
9. PERFORM CEMENT STABILIZATION ON ROADWAY BASE MATERIALS AND SUBGRADE.
10. CONSTRUCT TYPE A GUTTER (WHERE APPLICABLE).
11. PLACE HOT-MIX ASPHALT BINDER COURSE. THIS WORK SHALL BE PERFORMED WHILE MAINTAINING ONE LANE OF THROUGH TRAFFIC.
12. PLACE INITIAL 4 1/2" LIFT ON PROPOSED AGGREGATE SHOULDERS TO ELIMINATE PAVEMENT EDGE DROP-OFF.

**NOTES:**

1. ILLUSTRATION NOT TO SCALE.
2. ALL TRAFFIC CONTROL SIGNS/DEVICES SHALL CONFORM TO AND BE PLACED/IMPLEMENTED IN ACCORDANCE WITH THE CURRENT EDITION OF THE MANUAL ON UNIFORM TRAFFIC CONTROL DEVICES IN EFFECT ON THE DATE OF THE INVITATION FOR BIDS.
3. ANY ROAD CLOSED TO THRU TRAFFIC SIGNS (STAGE CONSTRUCTION DETOUR SIGN #10 LISTED BELOW) SHALL BE ATTACHED TO A TYPE III BARRICADE PER IDOT STANDARD 701901 AND PLACED IN THE APPROPRIATE LANE TO DETER TRAFFIC FROM THE CONSTRUCTION ZONE.
4. CONTRACTOR SHALL IMPLEMENT A REDUCED SPEED LIMIT TO 40 M.P.H. IN/NEAR THE CONSTRUCTION ZONE DURING ALL PAVING AND SHOULDER WORK OPERATIONS IN STAGE III AND STAGE IV CONSTRUCTION. IF THE CONTRACTOR OPTS TO IMPLEMENT THE TYPICAL 10 M.P.H. SPEED REDUCTION OR PLACE AGGREGATE SHOULDER LIFTS IN STAGE IV CONSTRUCTION ONLY, EXTENDED LEG BARRICADES WITH APPROPRIATE LIGHTING WILL NEED TO BE IMPLEMENTED ACCORDING TO ARTICLE 701.07 OF THE CURRENT IDOT STANDARD SPECIFICATIONS FOR ROAD AND BRIDGE CONSTRUCTION; IN EFFECT ON THE DATE OF THE INVITATION FOR BIDS. ARTICLE 701.07 SHALL GOVERN AT ALL TIMES DURING TYPICAL SPEED REDUCTIONS.

F.A.S. RTE.	SECTION	COUNTY	TOTAL SHEETS	SHEET NO.
748	06-00053-00 RS	JERSEY	110	27
STA. NA	TO STA. NA			
CONTRACT #97375		PROJECT NO. RS-0748(109)		



SIGN NUMBER	SIGN DESCRIPTION	MUTCD SIGN TYPE	MUTCD SIGN DESIGNATION	SIGN SIZE	SPECIAL COLOR	SIGN TO READ	MUTCD REFERENCE
①	ROAD CLOSED (DIST.)	TRAFFIC CONTROL ZONE WARNING SIGN	W20-3	48x48	-	ROAD CLOSED AHEAD	FIGURE 6F-4
②	DETOUR (DIST.)	TRAFFIC CONTROL ZONE WARNING SIGN	W20-2	48x48	-	DETOUR AHEAD	FIGURE 6F-4
③	DIRECTION - LEFT	DIRECTIONAL ARROW AUXILIARY SIGN	M5-1(L)	21x15	ORANGE	-	FIGURE 2D-5
④	DIRECTION - RIGHT	DIRECTIONAL ARROW AUXILIARY SIGN	M5-1(R)	21x15	ORANGE	-	FIGURE 2D-5
⑤	DIRECTION - STRAIGHT	DIRECTIONAL ARROW AUXILIARY SIGN	M6-3	21x15	ORANGE	-	FIGURE 2D-5
⑥	DIRECTION - ANGLE RIGHT	DIRECTIONAL ARROW AUXILIARY SIGN	M6-2(R)	21x15	ORANGE	-	FIGURE 2D-5
⑦	DIRECTION - ANGLE LEFT	DIRECTIONAL ARROW AUXILIARY SIGN	M6-2(L)	21x15	ORANGE	-	FIGURE 2D-5
⑧	DETOUR SIGN	EXIT/DETOUR CLOSURE SIGN	M4-8	24x12	-	DETOUR	FIGURE 6F-5
⑨	STREET NAME SIGN	GUIDE SIGN	D3-1	36x12	-	DELHI RD	FIGURE 2D-8
⑩	ROAD CLOSED THRU TRAFFIC	TRAFFIC CONTROL ZONE REGULATORY SIGN	R11-3a	60x30	-	ROAD CLOSED # MILES AHEAD LOCAL TRAFFIC ONLY	FIGURE 6F-3

**LEGEND:**  
 CONSTRUCTION ZONE (CLOSED TO ALL TRAFFIC)\*  
 CONSTRUCTION ZONE (CLOSED TO THRU TRAFFIC)\*\*  
 DETOUR ROUTE

\* DURING EXCAVATION AND EMBANKMENT OPERATIONS ON THE ROADWAY.  
 \*\* DURING AND AFTER CEMENT STABILIZATION UNTIL HMA BINDER IS PLACED.

REVISIONS	DATE

ILLINOIS DEPARTMENT OF TRANSPORTATION  
**STAGE CONST./TRAFFIC CONTROL**  
**STAGE II**  
 DELHI ROAD STA. 239+00 TO STA. 285+00  
 DELHI ROAD  
 F.A.S. ROUTE 748  
 SECTION 06-00053-00-RS  
 JERSEY COUNTY