
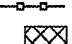
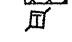

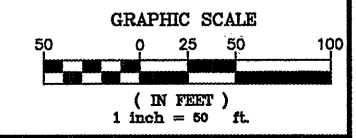
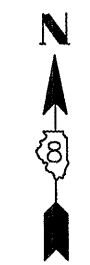
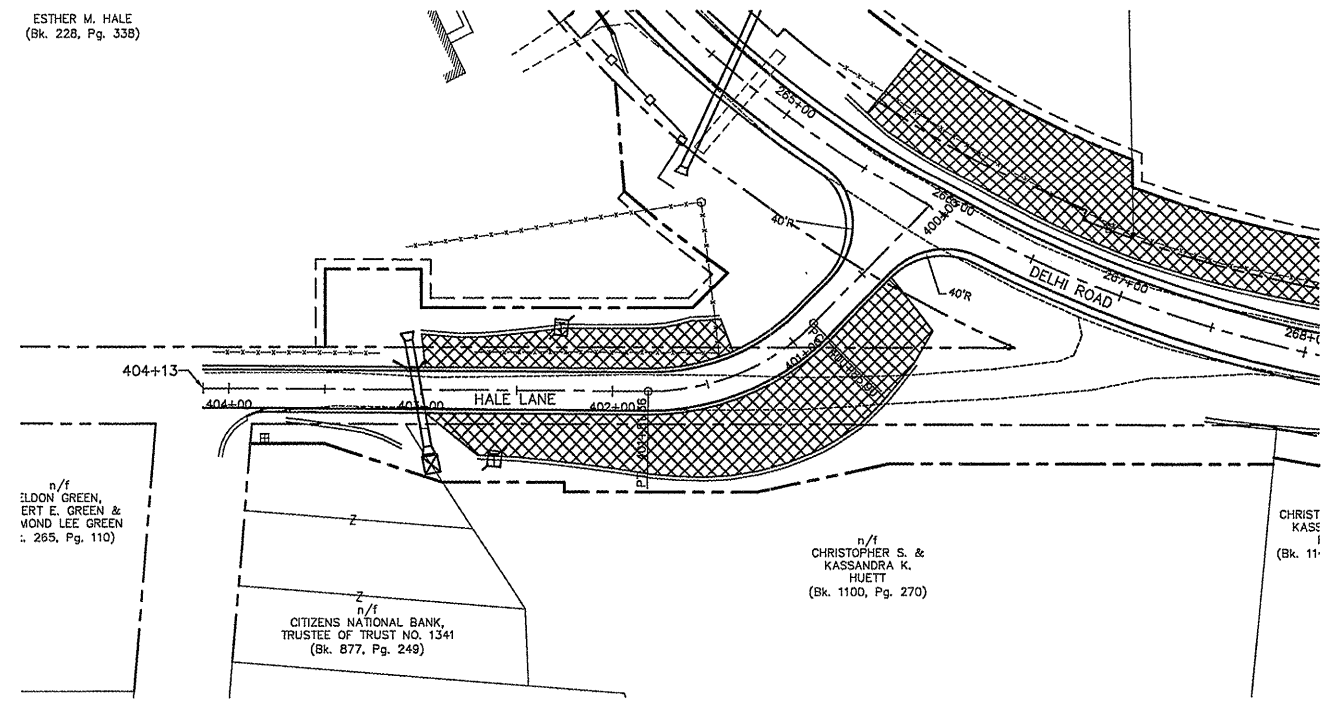
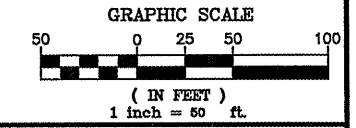
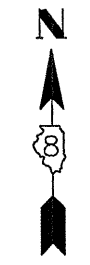
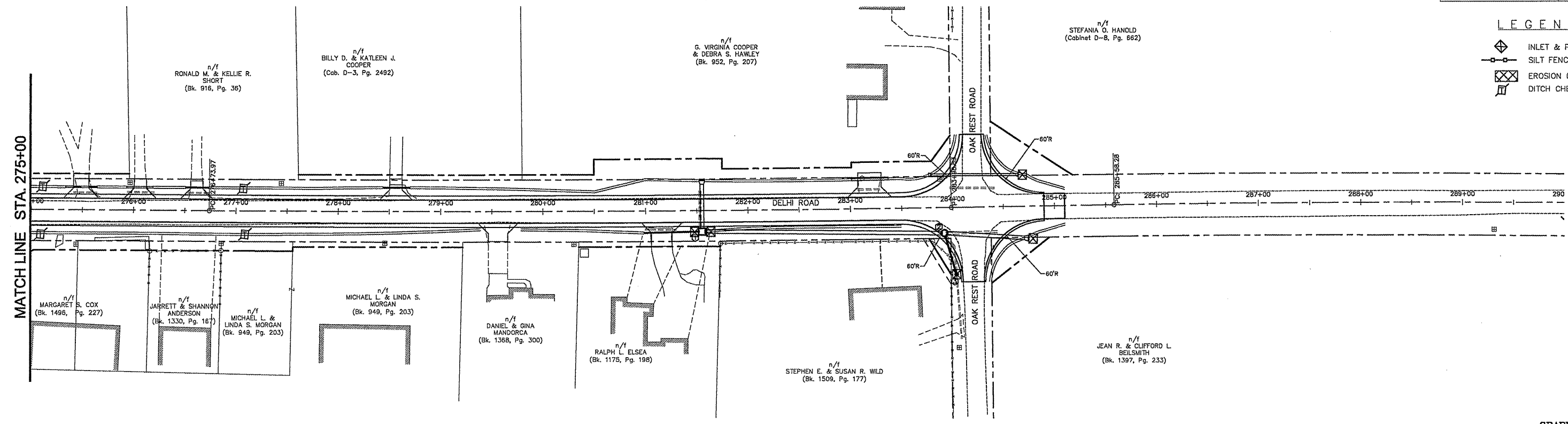


F.A.S. RTE.	SECTION	COUNTY	TOTAL SHEETS	SHEET NO.
74B	06-00053-00 RS	JERSEY	110	33
STA. 275+00		TO STA. 285+50		
CONTRACT #97375		PROJECT NO. RS-0748(109)		

LEGEND

-  INLET & PIPE PROTECTION
-  SILT FENCE
-  EROSION CONTROL BLANKET
-  DITCH CHECK TEMPORARY



REVISIONS	DATE

ILLINOIS DEPARTMENT OF TRANSPORTATION

EROSION CONTROL

DELHI ROAD
 F.A.S. ROUTE 748
 SECTION 06-00053-00-RS
 JERSEY COUNTY

MATCH LINE STA. 275+00

n/f
RONALD M. & KELLIE R. SHORT
(Bk. 916, Pg. 36)

n/f
BILLY D. & KATLEEN J. COOPER
(Cab. D-3, Pg. 2492)

n/f
G. VIRGINIA COOPER & DEBRA S. HAWLEY
(Bk. 952, Pg. 207)

n/f
STEFANIA O. HANOLD
(Cabinet D-8, Pg. 862)

n/f
MARGARET S. COX
(Bk. 1498, Pg. 227)

n/f
JARRETT & SHANNON ANDERSON
(Bk. 1330, Pg. 167)

n/f
MICHAEL L. & LINDA S. MORGAN
(Bk. 949, Pg. 203)

n/f
MICHAEL L. & LINDA S. MORGAN
(Bk. 949, Pg. 203)

n/f
DANIEL & GINA MANDORCA
(Bk. 1368, Pg. 300)

n/f
RALPH L. ELSEA
(Bk. 1175, Pg. 198)

n/f
STEPHEN E. & SUSAN R. WILD
(Bk. 1509, Pg. 177)

n/f
JEAN R. & CLIFFORD L. BEILSMITH
(Bk. 1397, Pg. 233)

ESTHER M. HALE
(Bk. 228, Pg. 338)

n/f
BLDON GREEN, ERT E. GREEN & WOND LEE GREEN
- 265, Pg. 110)

n/f
CITIZENS NATIONAL BANK, TRUSTEE OF TRUST NO. 1341
(Bk. 877, Pg. 249)

n/f
CHRISTOPHER S. & KASSANDRA K. HUETT
(Bk. 1100, Pg. 270)

CHRIST KAS
1
(Bk. 11-