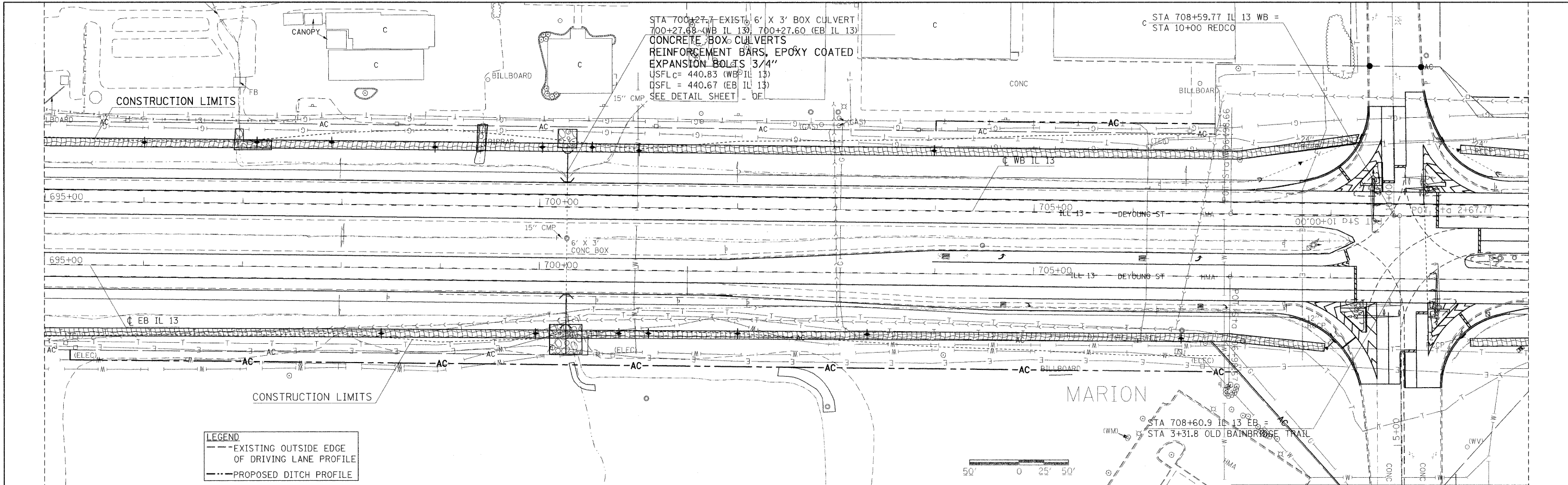
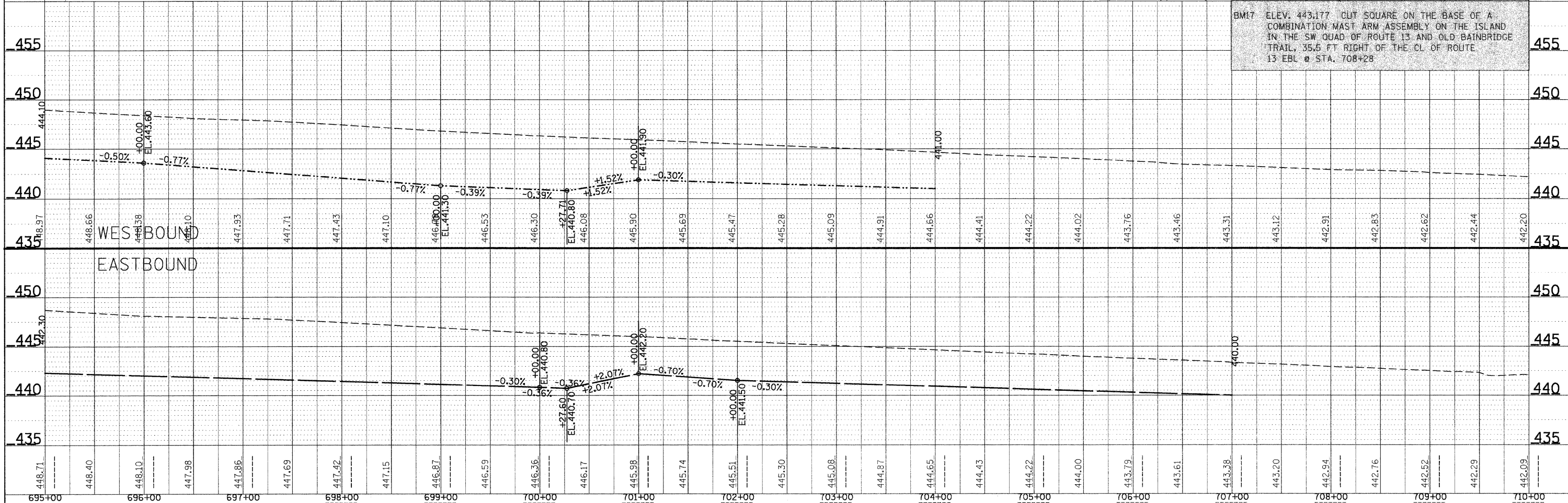


DATE	
BY	
SURVEYED	
PLANNED	
NOTED	
NOTED	
NOTED	
NO.	

DATE	
BY	
SURVEYED	
PLANNED	
NOTED	
NOTED	
NOTED	
NO.	



BMT ELEV. 443.177 CUT SQUARE ON THE BASE OF A COMBINATION MAST ARM ASSEMBLY ON THE ISLAND IN THE SW QUAD OF ROUTE 13 AND OLD BAINBRIDGE TRAIL, 35.5 FT RIGHT OF THE CL OF ROUTE 13 EBL @ STA. 708+28



FILE NAME =	USER NAME = shepar-dgd	DESIGNED -	REVISED -	STATE OF ILLINOIS DEPARTMENT OF TRANSPORTATION	PLAN AND PROFILE SHEETS		RTE.	SECTION	COUNTY	TOTAL SHEETS	SHEET NO.
ci:\pw\work\PMIDOT\SHEPARDGD\dms47330\Fedstml3-sht-plnpr.f.dgn		DRAWN -	REVISED -		331	(1-2)N-2,R(1X-1)N-3,R-2	WILLIAMSON	202	35		
PLOT SCALE = 50,0000' / IN.		CHECKED -	REVISED -		CONTRACT NO. 98857						
PLOT DATE = 10/14/2009		DATE -	REVISED -		ILLINOIS FED. AID PROJECT						