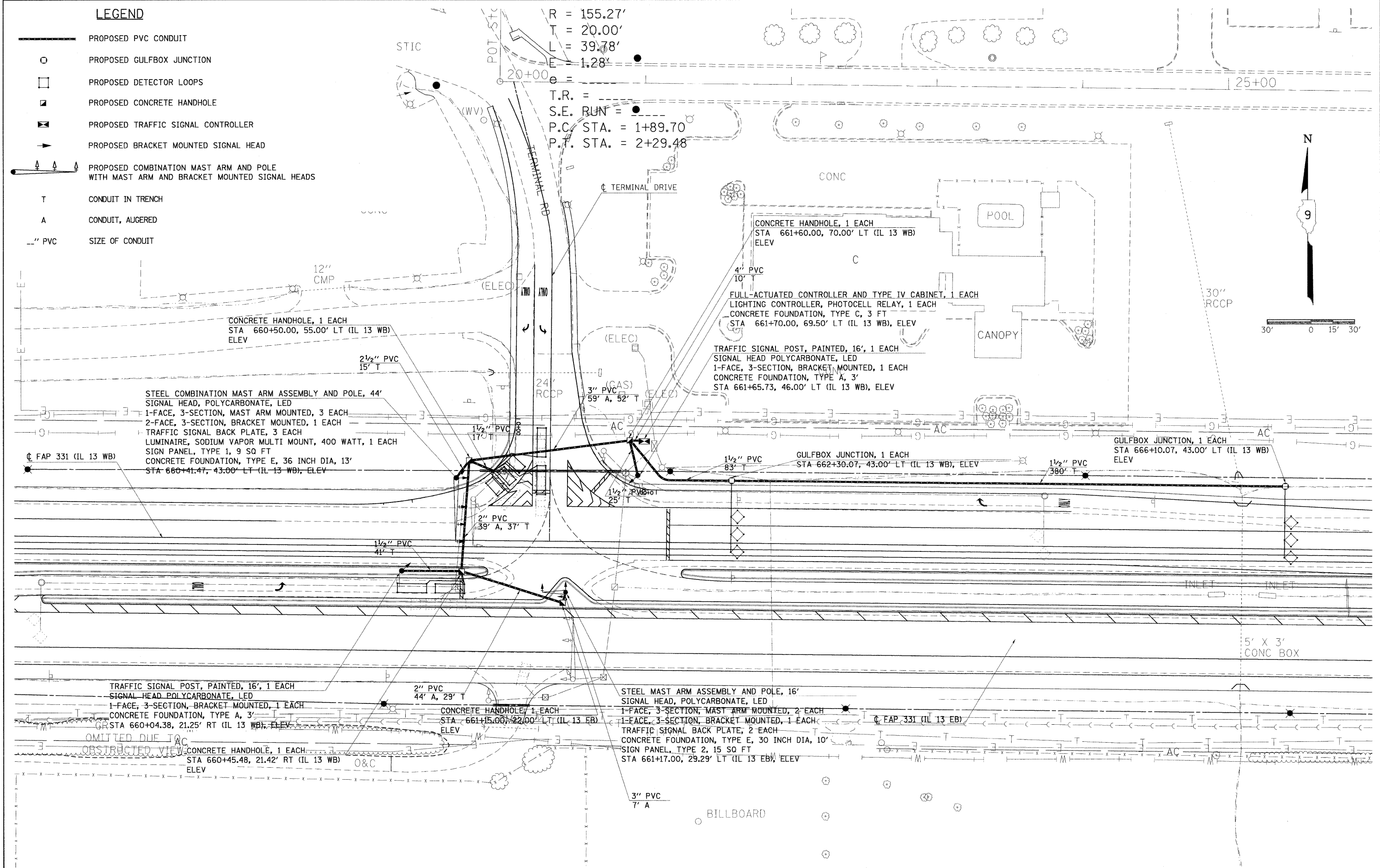


LEGEND

- PROPOSED PVC CONDUIT
- PROPOSED GULFBOX JUNCTION
- PROPOSED DETECTOR LOOPS
- PROPOSED CONCRETE HANDHOLE
- ⊠ PROPOSED TRAFFIC SIGNAL CONTROLLER
- ➔ PROPOSED BRACKET MOUNTED SIGNAL HEAD
- ⚡ PROPOSED COMBINATION MAST ARM AND POLE WITH MAST ARM AND BRACKET MOUNTED SIGNAL HEADS
- T CONDUIT IN TRENCH
- A CONDUIT, AUGERED
- " PVC SIZE OF CONDUIT



R = 155.27'
 T = 20.00'
 L = 39.78'
 E = 1.28'
 T.R. = ---
 S.E. RUN = ---
 P.C. STA. = 1+89.70
 P.T. STA. = 2+29.48



30' 0 15' 30'

STEEL COMBINATION MAST ARM ASSEMBLY AND POLE, 44'
 SIGNAL HEAD, POLYCARBONATE, LED
 1-FACE, 3-SECTION, MAST ARM MOUNTED, 3 EACH
 2-FACE, 3-SECTION, BRACKET MOUNTED, 1 EACH
 TRAFFIC SIGNAL BACK PLATE, 3 EACH
 LUMINAIRE, SODIUM VAPOR MULTI MOUNT, 400 WATT, 1 EACH
 SIGN PANEL, TYPE 1, 9 SQ FT
 CONCRETE FOUNDATION, TYPE E, 36 INCH DIA, 13'
 STA 660+41.47, 43.00' LT (IL 13 WB), ELEV

CONCRETE HANDHOLE, 1 EACH
 STA 661+60.00, 70.00' LT (IL 13 WB)
 ELEV

FULL-ACTUATED CONTROLLER AND TYPE IV CABINET, 1 EACH
 LIGHTING CONTROLLER, PHOTOCELL RELAY, 1 EACH
 CONCRETE FOUNDATION, TYPE C, 3 FT
 STA 661+70.00, 69.50' LT (IL 13 WB), ELEV

TRAFFIC SIGNAL POST, PAINTED, 16', 1 EACH
 SIGNAL HEAD POLYCARBONATE, LED
 1-FACE, 3-SECTION, BRACKET MOUNTED, 1 EACH
 CONCRETE FOUNDATION, TYPE A, 3'
 STA 661+65.73, 46.00' LT (IL 13 WB), ELEV

GULFBOX JUNCTION, 1 EACH
 STA 662+30.07, 43.00' LT (IL 13 WB), ELEV

GULFBOX JUNCTION, 1 EACH
 STA 666+10.07, 43.00' LT (IL 13 WB)
 ELEV

TRAFFIC SIGNAL POST, PAINTED, 16', 1 EACH
 SIGNAL HEAD POLYCARBONATE, LED
 1-FACE, 3-SECTION, BRACKET MOUNTED, 1 EACH
 CONCRETE FOUNDATION, TYPE A, 3'
 STA 660+04.38, 21.25' RT (IL 13 WB), ELEV

CONCRETE HANDHOLE, 1 EACH
 STA 661+15.00, 22.00' LT (IL 13 WB)
 ELEV

STEEL MAST ARM ASSEMBLY AND POLE, 16'
 SIGNAL HEAD, POLYCARBONATE, LED
 1-FACE, 3-SECTION, MAST ARM MOUNTED, 2 EACH
 1-FACE, 3-SECTION, BRACKET MOUNTED, 1 EACH
 TRAFFIC SIGNAL BACK PLATE, 2 EACH
 CONCRETE FOUNDATION, TYPE E, 30 INCH DIA, 10'
 SIGN PANEL, TYPE 2, 15 SQ FT
 STA 661+17.00, 29.29' LT (IL 13 EB), ELEV

FILE NAME = c:\pwork\PW1001\SHEPARDDG\dms47338\F	USER NAME = shepardgd	DESIGNED -	REVISED -	STATE OF ILLINOIS DEPARTMENT OF TRANSPORTATION	PROPOSED TRAFFIC SIGNAL & LIGHTING ILLINOIS 13 AND TERMINAL DRIVE				F.A.P. RTE.	SECTION	COUNTY	TOTAL SHEETS	SHEET NO.
	PLOT SCALE = 30,0000' / IN.	CHECKED -	REVISED -						331	(1-2)N-2,R;(1X-1)N-3,R-2	WILLIAMSON	202	80.
PLOT DATE = 10/14/2009	DATE -	REVISED -	REVISED -	SCALE: 1"=30'				SHEET NO. OF SHEETS STA. TO STA.		CONTRACT NO. 98857			
											ILLINOIS FED. AID PROJECT		