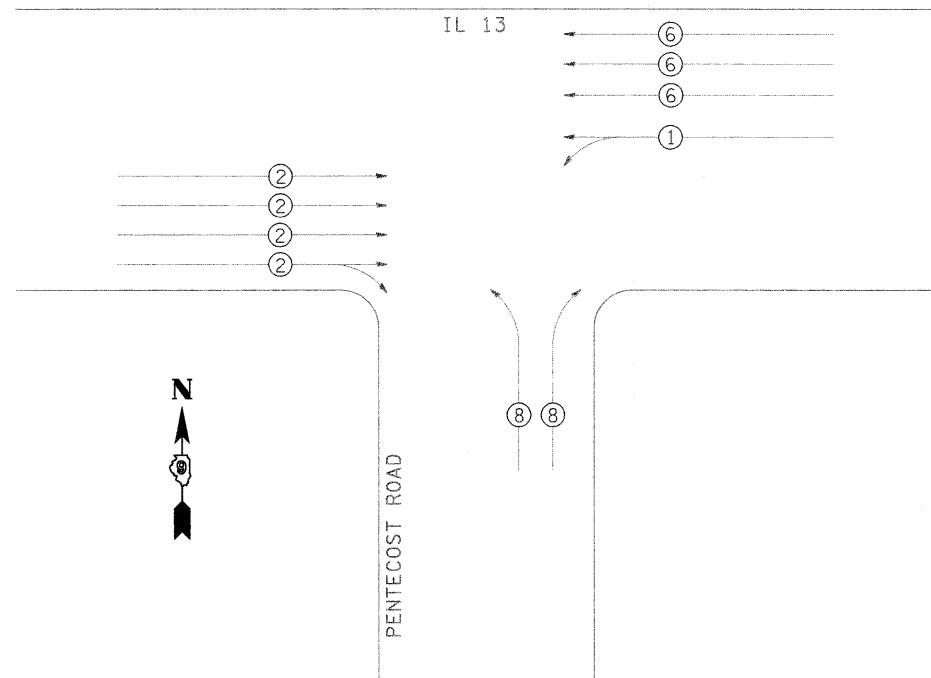
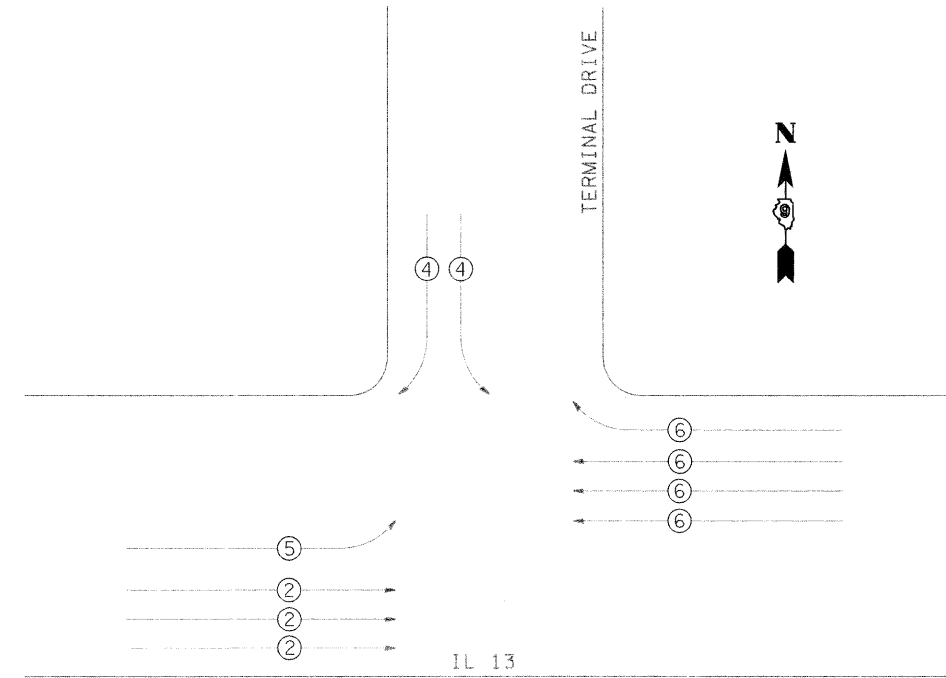


PHASE DESIGNATION DIAGRAMS

PENTECOST ROAD AND IL 13

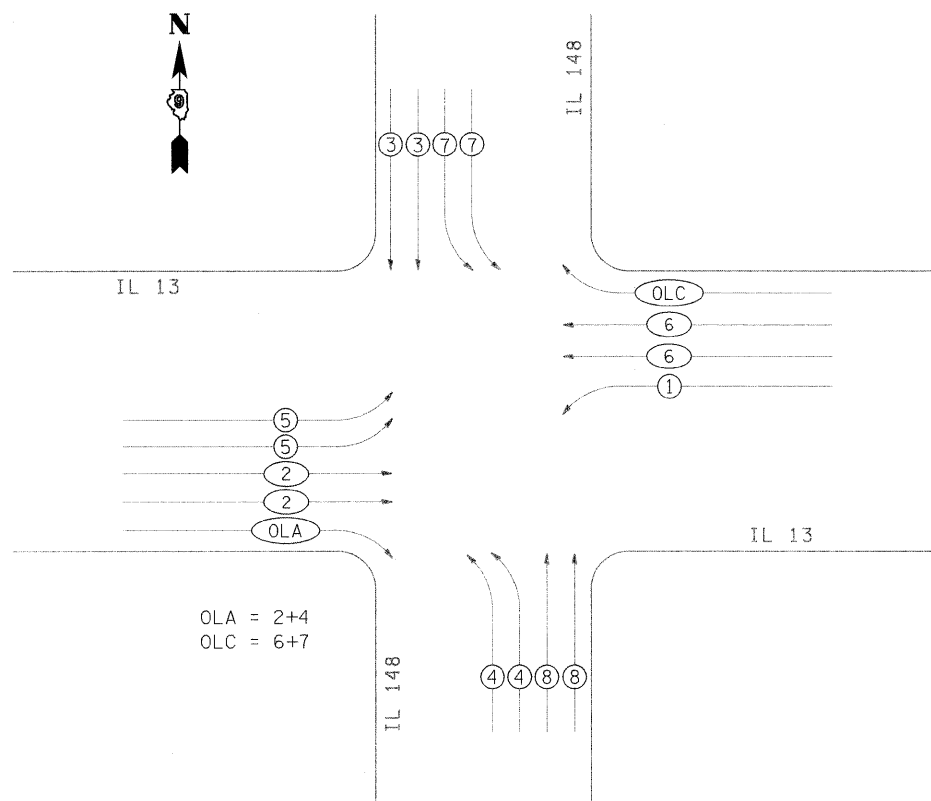


TERMINAL DRIVE AND IL 13

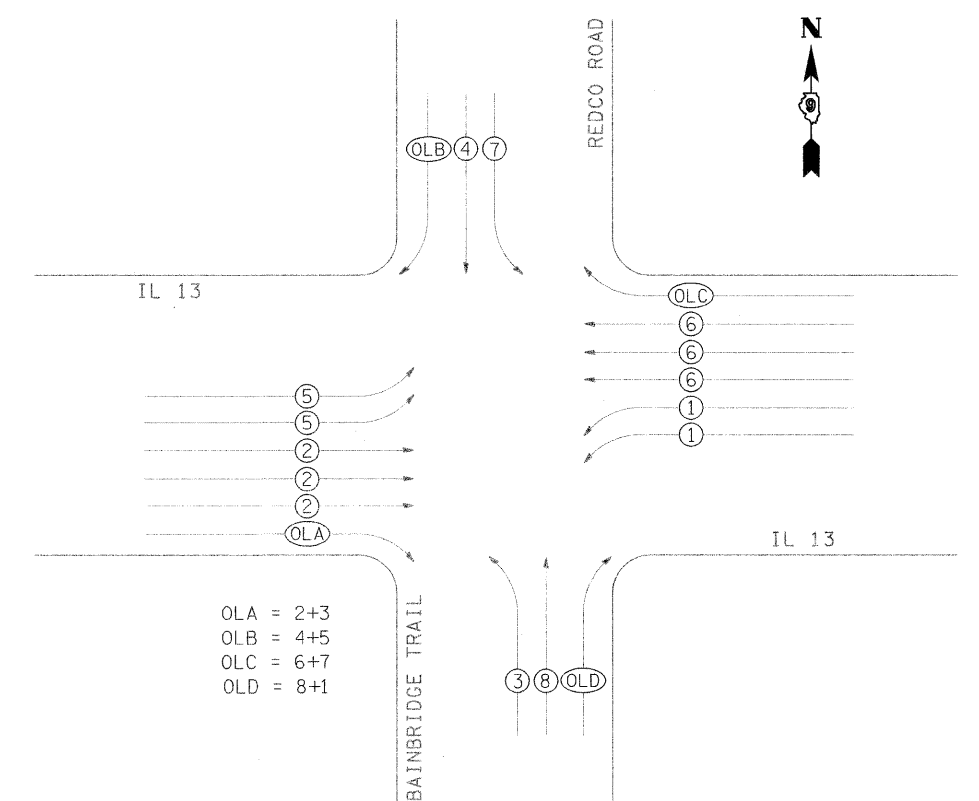


**CONTROLLER SPECIFIED:
FULL ACTUATED CONTROLLER,
STANDARD SEQUENCE IV,
8 PHASE, TYPE IV CONTROLLER
CABINET**

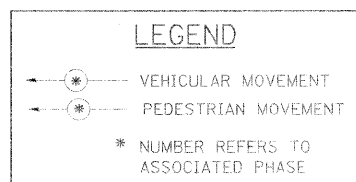
IL 148 AND IL 13



BAINBRIDGE TRAIL AND IL 13



REFERRING TO STANDARD 857001, THE VEHICULAR AND PEDESTRIAN PHASES USED ARE DESIGNATED AS SHOWN.



FILE NAME =	USER NAME = shepardgd	DESIGNED -	REVISED -
c:\pwork\PWIDOT\SHEPARDGD\dms47332\fdstml3-sht-light.dgn		DRAWN -	REVISED -
PLOT SCALE = 50.0000' / IN.		CHECKED -	REVISED -
PLOT DATE = 10/14/2009		DATE -	REVISED -

**STATE OF ILLINOIS
DEPARTMENT OF TRANSPORTATION**

**PHASE DESIGNATION DIAGRAMS FOR TERMINAL DR.,
PENTECOST RD., IL 148 AND BAINBRIDGE TR.**

SCALE: SHEET NO. OF SHEETS STA. 653+00.00 TO STA. 668+00.00

F.A.P. RTE. 331	SECTION (1-2)N-2,R;(1X-1)N-3,R-2	COUNTY WILLIAMSON	CONTRACT NO. 98857
ILLINOIS FED. AID PROJECT			REVISIONS DRAWN 1-31-90 REVISED 5-30-90 REVISED 12-16-01 REVISED 3-27-08