

STATE OF ILLINOIS
DEPARTMENT OF TRANSPORTATION
DIVISION OF HIGHWAYS

F.A.U. RTE.	SECTION	COUNTY	TOTAL SHEETS	SHEET NO.
VAR	09-00038-00-RS	PERRY	12	1
FEDERAL AID PROJECT ARA-5084 (003) ILLINOIS CONTRACT #99386				

AMERICAN RECOVERY AND REINVESTMENT ACT OF 2009

CITY OF PINCKNEYVILLE

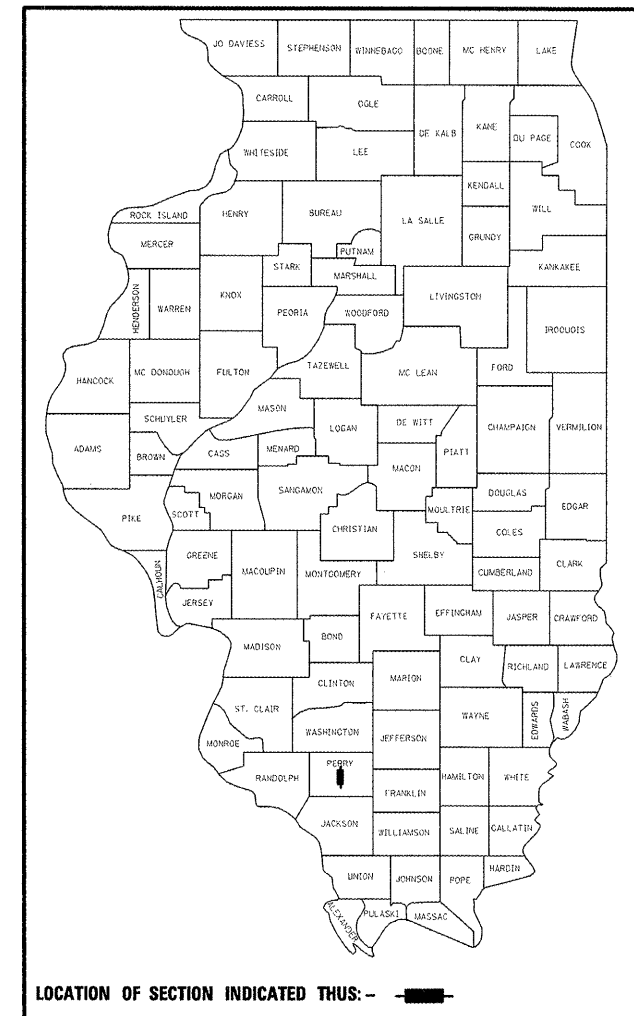
PROPOSED HOT-MIX ASPHALT OVERLAY OF
FAU 9954 (GRANT ST.) AND FAU 9960 (EAST ST.)

SECTION 09-00028-00-RS

FEDERAL PROJECT NO. ARA-5084 (003)

JOB NO. C-99-556-09

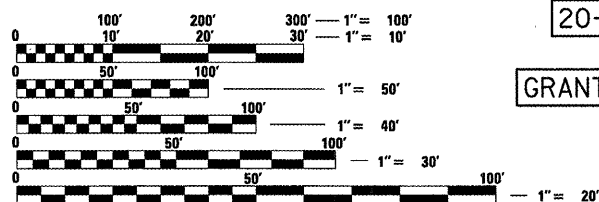
CONTRACT # 99386



LOCATION OF SECTION INDICATED THUS: - ■ -

INDEX OF SHEETS

- 1 COVER
- 2 GENERAL NOTES, HIGHWAY STANDARDS, AND SUMMARY OF QUANTITIES
- 3-4 TYPICAL SECTIONS
- 5 SCHEDULES
- 6-8 PLAN & PROFILE - SOUTH GRANT STREET
- 9-11 PLAN & PROFILE - SOUTH EAST STREET
- 12 DETAILS



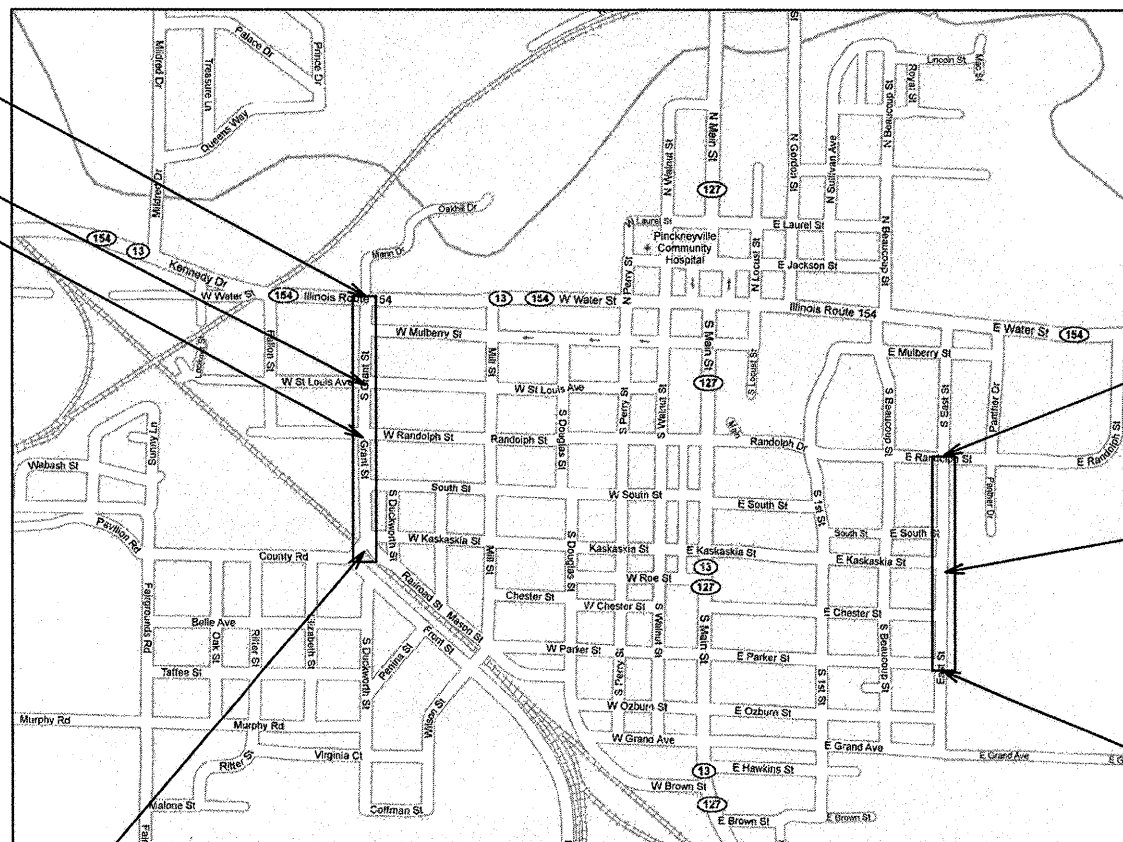
FULL SIZE PLANS HAVE BEEN PREPARED USING STANDARD ENGINEERING SCALES. REDUCED SIZED PLANS WILL NOT CONFORM TO STANDARD SCALES. IN MAKING MEASUREMENTS ON REDUCED PLANS, THE ABOVE SCALES MAY BE USED.

J.U.L.I.E.
JOINT UTILITY LOCATION INFORMATION FOR EXCAVATION
1-800-892-0123

PRINTED BY THE AUTHORITY
OF THE STATE OF ILLINOIS

ROADWAY CLASSIFICATION: URBAN
CURRENT ADT = 700
DESIGN YEAR (2029) ADT = 1288

PROJECT ENGINEER: DEVON DeJOURNETT - HMG ENGINEERS
PROJECT MANAGER: SAM FULK - STREET COMMISSIONER



LOCATION MAP

END WORK
STA 25+97.50

20+92.14

GRANT STREET

END WORK
STA 43+05.50

EAST STREET

BEGIN WORK
STA 30+00.00

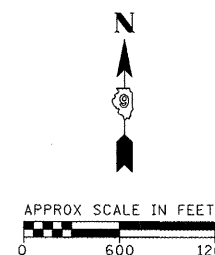
BEGIN WORK
STA 10+65.00

LENGTH OF IMPROVEMENTS

GRANT STREET
NET LENGTH = 1,532.50 FEET = 0.290 MILES

EAST STREET
NET LENGTH = 1,305.50 FEET = 0.247 MILES

TOTAL LENGTH = 2,838.00 FEET = 0.537 MILES



STATE OF ILLINOIS
DEPARTMENT OF TRANSPORTATION
DIVISION OF HIGHWAYS

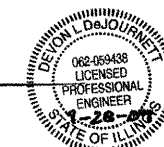
APPROVED 10-22 20 09
John M. Heller
MAYOR
CITY OF PINCKNEYVILLE

PASSED 10-29 20 09
Ronald H. Melcher
DISTRICT 9 ENGINEER OF LOCAL ROADS AND STREETS

RELEASING FOR
BID BASED ON
LIMITED REVIEW 10-29 20 09
Mary C. Lammie
DEPUTY DIRECTOR OF HIGHWAYS, REGION 5 ENGINEER - MARY C. LAMIE



DEVON L. DEJOURNETT, P.E.
ILLINOIS REGISTERED ENGINEER NO. 062-059438
REGISTRATION EXPIRES NOV. 30, 2009



LIST OF STANDARDS

- 000001-05 STANDARD SYMBOLS, ABBREVIATIONS, AND PATTERNS
- 001006 DECIMAL OF AN INCH AND OF A FOOT
- 701301-03 LANE CLOSURE, 2L, 2W, SHORT TIME OPERATIONS
- 701306-02 LANE CLOSURE, 2L, 2W, SLOW MOVING OPERATIONS DAY ONLY, FOR SPEEDS > 45 MPH
- 701311-03 LANE CLOSURE, 2L, 2W MOVING OPERATIONS - DAY ONLY
- 701901-01 TRAFFIC CONTROL DEVICES
- 780001-02 TYPICAL PAVEMENT MARKINGS

MIXTURE REQUIREMENTS

MIXTURE USE	SURFACE	LEVELING BINDER	INCIDENTAL
AC/PG	PG 64-22	PG 64-22	PG 64-22
RAP % (MAX)	15%	25%	15%
DESIGN AIR VOIDS	4.0% @ Ndes=50	4.0% @ Ndes=50	4.0% @ Ndes=50
MIX COMPOSITION (GRADATION MIXTURE)	IL 12.5	IL 4.75	IL 12.5
FRICTION AGG	MIXTURE C		MIXTURE C

SUMMARY OF QUANTITIES

CODE NO.	ITEM	UNIT	QUANTITY
30103000	SHAPING AND GRADING ROADWAY	UNIT	23
40200800	AGGREGATE SURFACE COURSE, TYPE B	TON	173
40600100	BITUMINOUS MATERIALS (PRIME COAT)	GALLON	1,005
40600300	AGGREGATE (PRIME COAT)	TON	22
40600625	LEVELING BINDER (MACHINE METHOD), N50	TON	328
40600990	TEMPORARY RAMP	SQ YD	170
40603310	HOT-MIX ASPHALT SURFACE COURSE, MIX "C", N50	TON	557
40800050	INCIDENTAL HOT-MIX ASPHALT SURFACING	TON	89
44000155	HOT-MIX ASPHALT SURFACE REMOVAL, 1 1/2"	SQ YD	2,603
44000157	HOT-MIX ASPHALT SURFACE REMOVAL, 2"	SQ YD	3,144
48101800	AGGREGATE SHOULDERS (SPECIAL)	SQ YD	840
67100100	MOBILIZATION	L SUM	1
70103700	TRAFFIC CONTROL COMPLETE	L SUM	1
78001110	PAINT PAVEMENT MARKING - LINE 4"	FOOT	5,784
Z0048665	RAILROAD PROTECTIVE LIABILITY INSURANCE	L SUM	1
60300405	VALVE BOX FRAMES TO BE ADJUSTED	EACH	13
60300305	FRAMES AND LIDS TO BE ADJUSTED	EACH	5

* SPECIALTY ITEMS

GENERAL NOTES

- ALL ELEVATIONS REFER TO U.S.G.S. MEAN SEA LEVEL DATUM.
- THE CONTRACTOR SHALL EXERCISE CARE IN PERFORMING REMOVALS SO AS NOT TO DISRUPT ADJOINING FEATURES THAT ARE TO REMAIN IN PLACE. ANY DAMAGE CAUSED TO ADJOINING FEATURES AS A RESULT OF THE CONTRACTOR'S NEGLIGENCE SHALL BE REPAIRED AT THE CONTRACTOR'S EXPENSE TO THE SATISFACTION OF THE ENGINEER.
- THE PRIME CONTRACTOR SHALL BE RESPONSIBLE FOR ALL SUB-CONTRACTED WORK, REGARDLESS OF FUNDING SOURCE. THE SPECIAL PROVISIONS, SPECIFICATIONS, AND STANDARD SPECIFICATIONS SHALL GOVERN CONTRACTUAL REQUIREMENTS FOR SAID ARRANGEMENTS.
- THE PRIME CONTRACTOR SHALL BE RESPONSIBLE FOR TRAFFIC CONTROL AND PROTECTION.
- ALL SAW CUTTING REQUIRED FOR REMOVALS SHALL BE INCLUDED IN THE CONTRACT UNIT PRICE PER UNIT OF REMOVAL QUANTITIES AND WILL NO BE PAID FOR SEPARATELY.
- THE CONTRACTOR SHALL EXERCISE CARE IN EXCAVATING AROUND EXISTING UTILITIES TO REMAIN IN PLACE, SUCH AS WATER AND SEWER MAINS, AND SHALL BE RESPONSIBLE FOR REPAIR OF THESE AND MAINTENANCE OF SERVICE, IF DAMAGED BY THE CONTRACTOR'S ACTIVITIES, AS DEEMED SUCH BY THE ENGINEER.
- THE CONTRACTOR SHALL BE RESPONSIBLE FOR ESTABLISHING POSITIVE DRAINAGE IN THE DISTURBED AREAS, TO THE SATISFACTION OF THE ENGINEER.
- ALL AREAS THAT ARE DISTURBED BEYOND THE SEEDING LIMITS SHALL BE GRADED AND RE-ESTABLISHED BY THE CONTRACTOR AT HIS/HER EXPENSE, IN THE SAME MANNER AS FINAL GRADING WORK PER THE SPECIFICATIONS, TO THE SATISFACTION OF THE ENGINEER.
- IN ADDITION TO WARNING SIGNS SHOWN ON THE STANDARDS FOR TRAFFIC CONTROL, ROAD CONSTRUCTION AHEAD SIGNS SHALL BE PLACED ON INTERSECTING SIDE ROADS THROUGHOUT THE WORK ZONE.
- REMOVAL OF EXISTING OIL AND CHIP SURFACE AND AGGREGATE HAS BEEN INCLUDED IN THE EARTHWORK QUANTITIES AND WILL BE PAID FOR AT THE CONTRACT UNIT PRICE PER CU. YD. FOR EARTH EXCAVATION.
- ALL ADVANCED WARNING SIGNS SHALL BE 48" FLUORESCENT ORANGE.
- THE FOLLOWING RATES OF APPLICATION HAVE BEEN USED IN CALCULATING PLAN QUANTITIES.

APPLICATION RATES

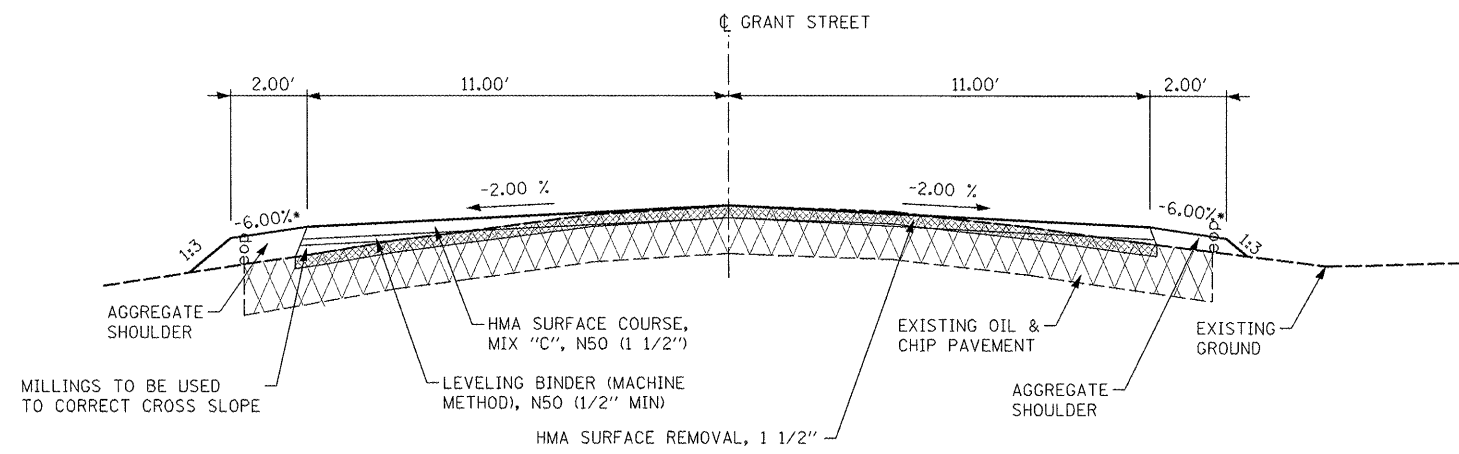
HOT-MIX ASPHALT MATERIALS	112 LBS/SQ YD/IN (2.016 TON/CU YD)
AGGREGATE MATERIALS	2.04 TONS/CU YD
GRANULAR MATERIALS	2.04 TONS/CU YD
AGGREGATE PRIME COAT	5 LBS/SQ YD (AGGREGATE SURFACE) OR 3 LBS/SQ YD (CONCRETE OR BITUMINOUS SURFACE)

FOR SEEDED AREAS:	
NITROGEN FERTILIZER NUTRIENT	90 LBS/ACRE
PHOSPHORUS FERTILIZER NUTRIENT	90 LBS/ACRE
POTASSIUM FERTILIZER NUTRIENT	90 LBS/ACRE
LIME	2 TONS/ACRE
TEMPORARY EROSION CONTROL SEEDING	100 LB/ACRE

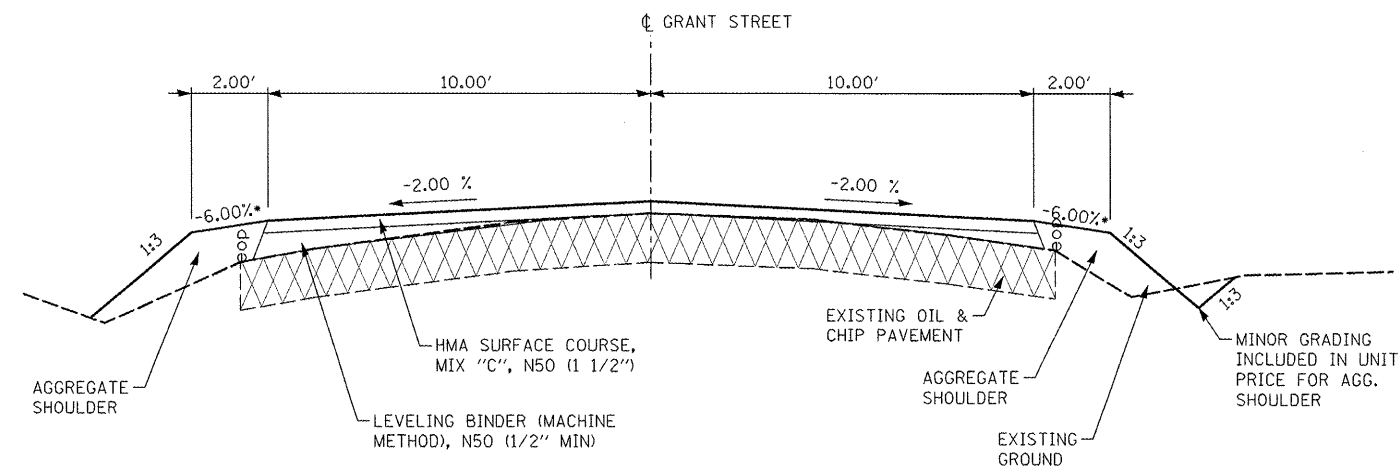
ANTICIPATED EFFORTS

THE ANTICIPATED ORDER OF CONSTRUCTION IS DESCRIBED BELOW AND IS INCLUDED FOR THE CONTRACTORS CONVENIENCE ONLY. THE CONTRACTOR MAY APPROACH THE WORK IN A MANNER THAT WORKS BEST FOR THEM.

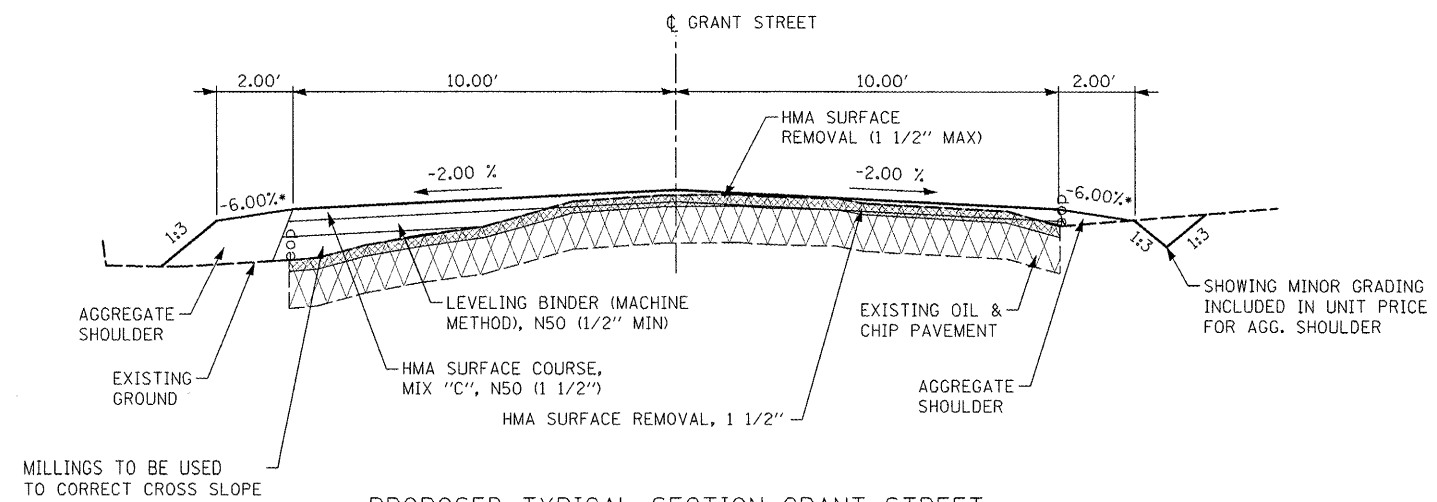
- MILLING FOR BUTT-JOINTS AND INSTALLATION OF TEMPORARY RAMPS.
- PROFILE CONTROLLED MILLING OF HIGH AREAS. AREAS HAVE BEEN APPROXIMATED IN THE PLANS.
- ADJUSTMENT OF SEWER MANHOLES, GAS VALVES, WATER VALVES, ETC.
- GRADING AND SHAPING MILLINGS
- HMA LEVELING BINDER MACHINE METHOD TO FILL VOIDS AND CORRECT CROSS SLOPES.
- HMA SURFACE COURSE (1 1/2")
- INCIDENTAL HMA SURFACING (SOME AREAS DRAIN OVER THE DRIVEWAYS. FLOW MUST BE MAINTAINED)
- AGG SHOULDERS AND RE-GRADING TO MAINTAIN FLOW. (APPROX AREAS OF RE-GRADING ARE SHOWN ON THE PLANS)
- AGG SURFACE COURSE ON ENTRANCES (SOME AREAS DRAIN OVER THE DRIVEWAYS. FLOW MUST BE MAINTAINED)
- PAINT PAVEMENT MARKING



PROPOSED TYPICAL SECTION GRANT STREET
STA 10+65 TO STA 14+50



PROPOSED TYPICAL SECTION GRANT STREET
STA 14+50 TO STA 18+00



PROPOSED TYPICAL SECTION GRANT STREET
STA 18+00 TO STA 24+00

NOTES:

• VARIES

AREAS OF MINOR GRADING ARE INDICATED ON THE PLAN VIEWS. LIMITS MAY VARY DUE TO ACTUAL CONDITIONS. NO ADDITIONAL COMPENSATION WILL BE ALLOWED FOR MAINTAINING FLOW BEYOND THE LIMITS SHOWN. ALL WORK SHALL BE INCLUDED IN THE BID UNIT PRICE FOR AGGREGATE SHOULDERS, TYPE A

ALL SECTIONS SHOWN ARE LOOKING NORTH

MILLING SHALL BE PROFILE CONTROLLED AT CENTERLINE. ENTIRE ROADWAY SHALL BE MILLED TO ENSURE GOOD BINDING BETWEEN MILLINGS AND ROAD. MILLING SHALL BE GRADED AND USED TO CORRECT MAJOR VARIATIONS PRIOR TO LEVELING BINDER.

FILE NAME =
H:\6149\VC_TYPSCT_6305.dgn

USER NAME = .USERDESCR.
PLOT SCALE = 20.0000' / IN.
PLOT DATE = 9/29/2009

DESIGNED - DLD
DRAWN - KOJ
CHECKED -
DATE -

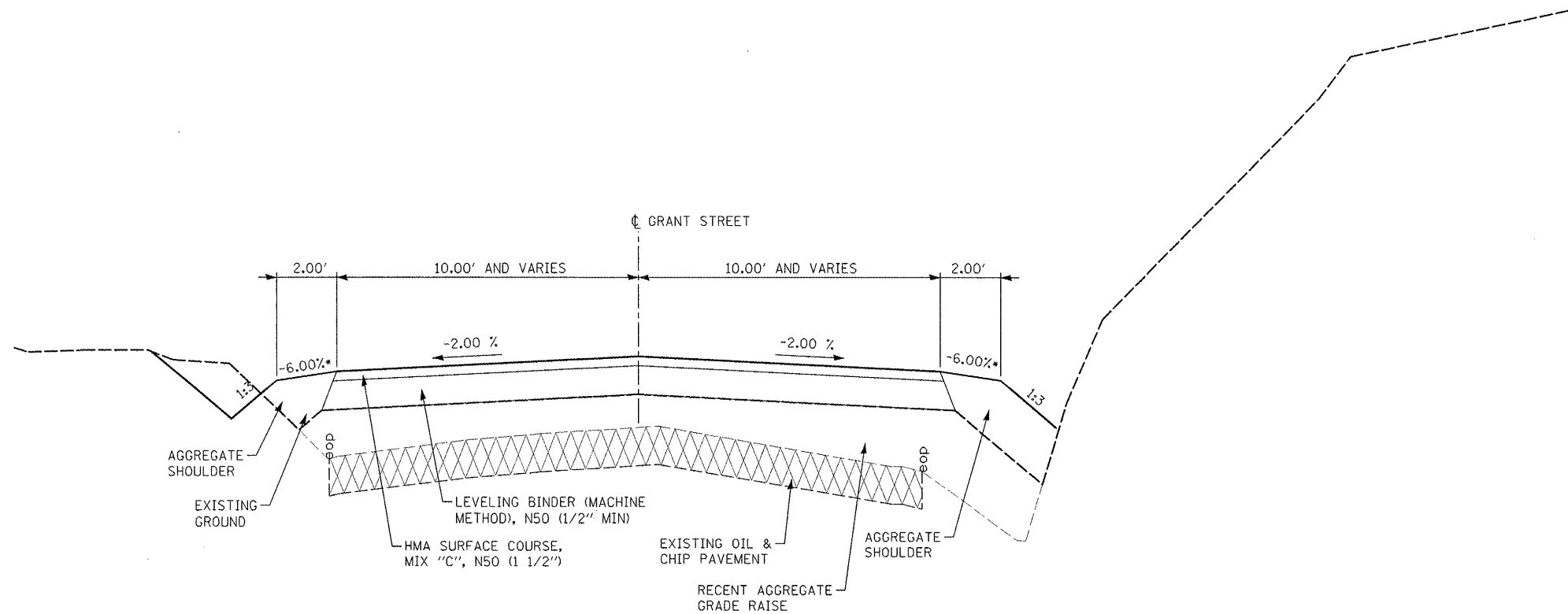
REVISED -
REVISED -
REVISED -
REVISED -

STATE OF ILLINOIS
DEPARTMENT OF TRANSPORTATION

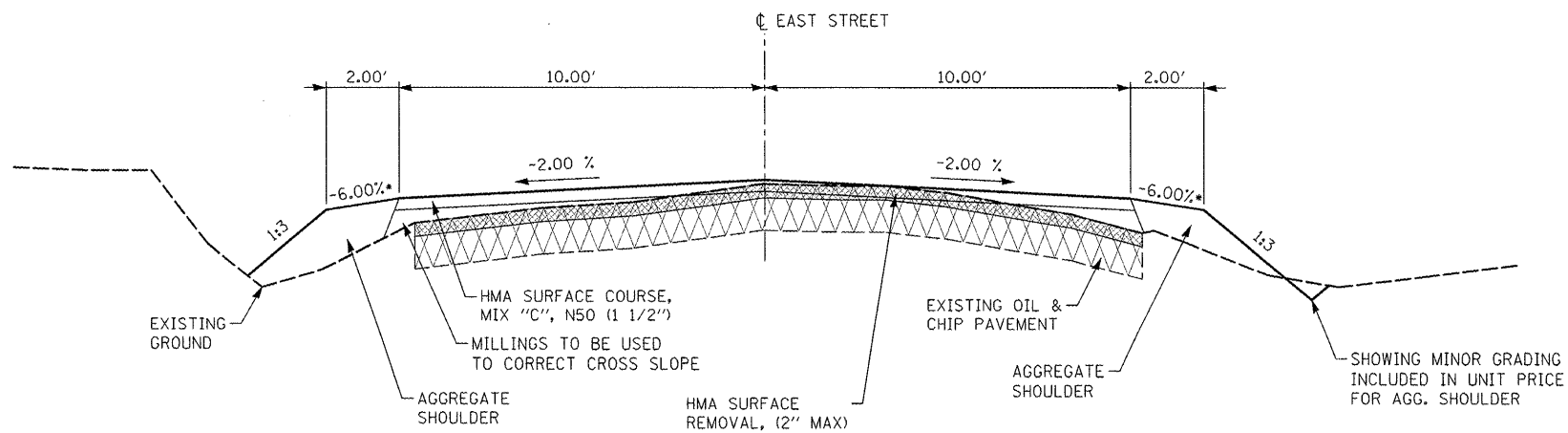
TYPICAL SECTIONS

SCALE: SHEET NO. OF SHEETS STA. TO STA.

F.A.U. RTE.	SECTION	COUNTY	TOTAL SHEETS	SHEET NO.
VAR	09-00028-00-RS	PERRY	12	3
CONTRACT NO. 99386				
[ILLINOIS] FED. AID PROJECT ARA-5084 (003)				



PROPOSED TYPICAL SECTION GRANT STREET
 STA 24+00 TO STA 25+97.5



PROPOSED TYPICAL SECTION EAST STREET

NOTES:

• VARIES

AREAS OF MINOR GRADING ARE INDICATED ON THE PLAN VIEWS. LIMITS MAY VARY DUE TO ACTUAL CONDITIONS. NO ADDITIONAL COMPENSATION WILL BE ALLOWED FOR MAINTAINING FLOW BEYOND THE LIMITS SHOWN. ALL WORK SHALL BE INCLUDED IN THE BID UNIT PRICE FOR AGGREGATE SHOULDERS, TYPE A

ALL SECTIONS SHOWN ARE LOOKING NORTH.

MILLING SHALL BE PROFILE CONTROLLED AT CENTERLINE. ENTIRE ROADWAY SHALL BE MILLED TO ENSURE GOOD BINDING BETWEEN MILLINGS AND ROAD. MILLING SHALL BE GRADED AND USED TO CORRECT MAJOR VARIATIONS PRIOR TO LEVELING BINDER.

FILE NAME *	USER NAME * USERDESCR.
HN\6149\VC_TYPSLECT_6305.dgn	
PLOT SCALE * 20,0000' / IN.	
PLOT DATE * 9/29/2009	

DESIGNED - DLD	REVISOR -
DRAWN - KOJ	REVISIONS -
CHECKED -	DATE -
DATE -	REVISIONS -

DESIGNED - DLD	REVISOR -
DRAWN - KOJ	REVISIONS -
CHECKED -	DATE -
DATE -	REVISIONS -

DESIGNED - DLD	REVISOR -
DRAWN - KOJ	REVISIONS -
CHECKED -	DATE -
DATE -	REVISIONS -

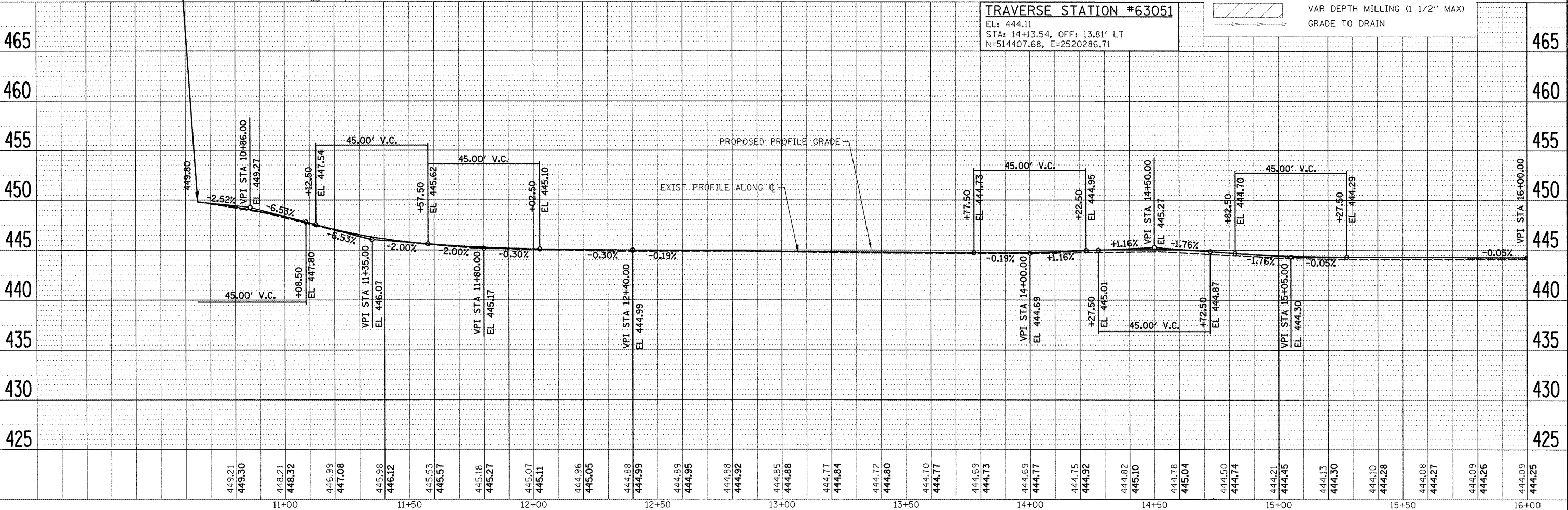
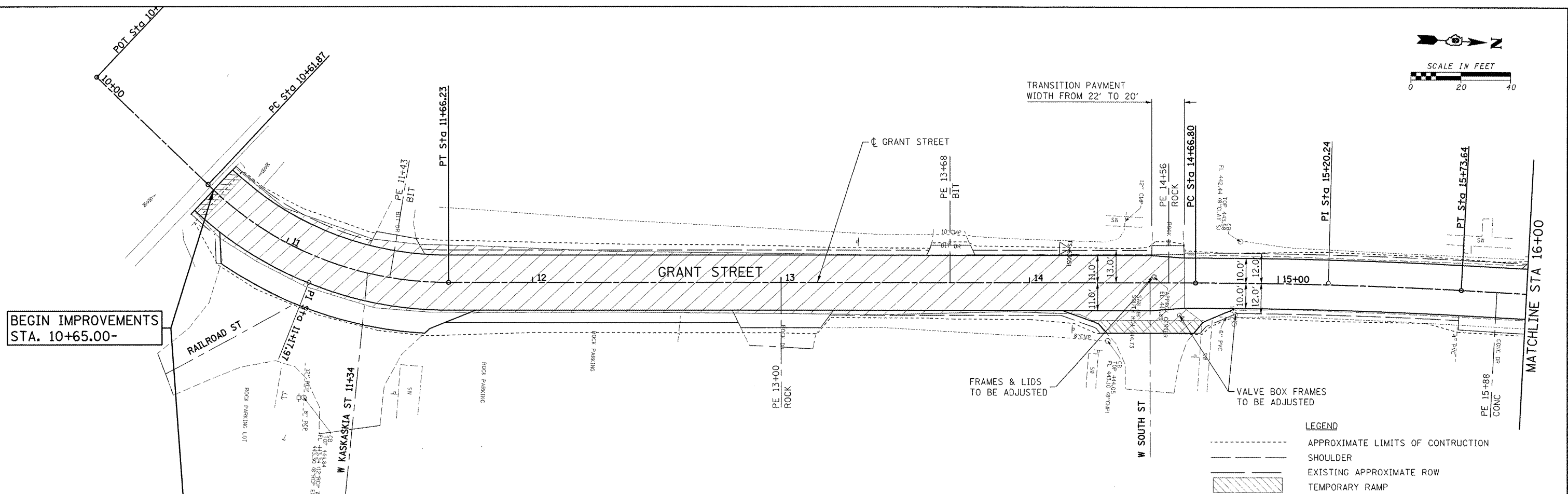
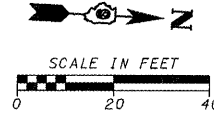
STATE OF ILLINOIS
DEPARTMENT OF TRANSPORTATION

SCALE:	SHEET NO.	OF	SHEETS	STA.	TO STA.

F.A.U. RTE.	SECTION	COUNTY	TOTAL SHEETS	SHEET NO.
VAR	09-00028-00-RS	PERRY	12	4
CONTRACT NO. 99386				
[ILLINOIS] FED. AID PROJECT ARA-5084 (003)				

PLAN	SUBMITTED	BY	DATE
	PLOTTED		
	ALIGNED		
	CHECKED		
	NO. _____		
	NOTE BOOK		
	NO. _____		
	FILE NAME		

PROFILE	DESIGNED	BY	DATE
	GRADES CHECKED		
	PLOTTED		
	STRUCTURE NOTATIONS CHECKED		
	NO. _____		
	NOTE BOOK		
	NO. _____		
	FILE NAME		

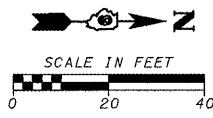
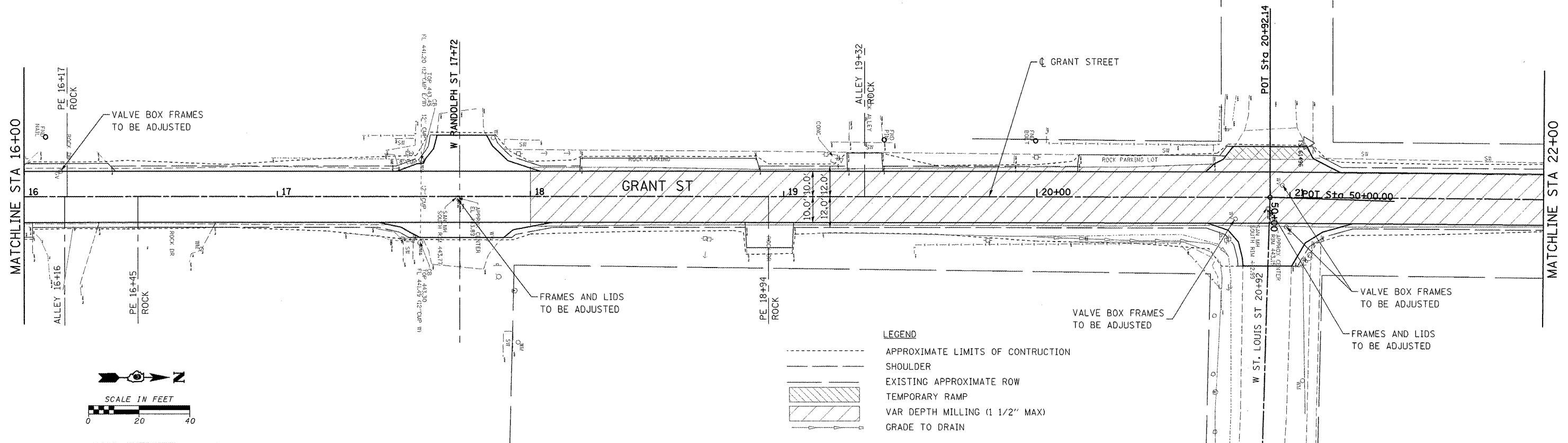


TRAVERSE STATION #63051
 EL: 444.11
 STA: 14+13.54, OFF: 13.81' LT
 N=514407.68, E=2520286.71

FILE NAME = H:\S14\VC_PP_GRANT_5305_1.dgn	USER NAME = _USERDESCR	DESIGNED - DLD	REVISED -	STATE OF ILLINOIS DEPARTMENT OF TRANSPORTATION	SOUTH GRANT STREET - PLAN & PROFILE	F.A.U. RT. =	SECTION =	COUNTY =	TOTAL SHEETS =	SHEET NO. =	
PLOT SCALE = 20.0000" / IN.	CHECKED - KOJ	REVISED -	VAR =			09-00028-00-RS	PERRY	12	6		
PLOT DATE = 9/29/2009	DATE -	REVISED -	SCALE:			SHEET NO. OF SHEETS	STA. TO STA.	CONTRACT NO. 99386			
								[ILLINOIS] FED. AID PROJECT ARA-5084 (003)			

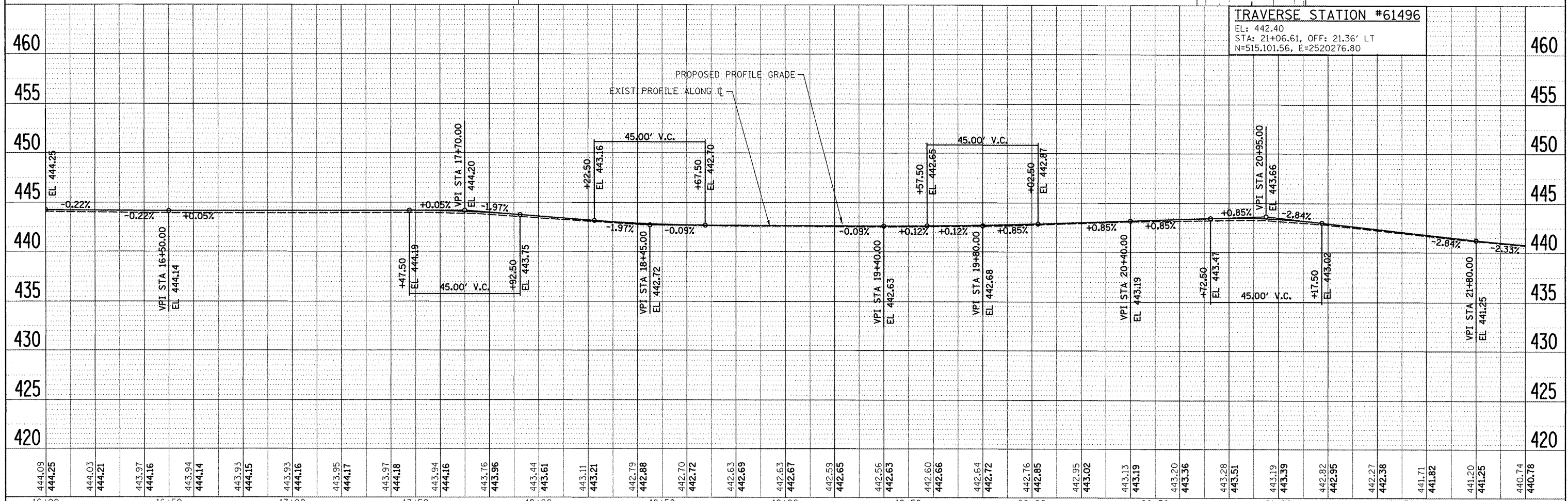
DATE	
BY	
REVISIONS	
PLANNING	
DESIGN	
CHECKED	
NO. 1	
NO. 2	
NO. 3	
NO. 4	
NO. 5	
NO. 6	
NO. 7	
NO. 8	
NO. 9	
NO. 10	
NO. 11	
NO. 12	
NO. 13	
NO. 14	
NO. 15	
NO. 16	
NO. 17	
NO. 18	
NO. 19	
NO. 20	
NO. 21	
NO. 22	
NO. 23	
NO. 24	
NO. 25	
NO. 26	
NO. 27	
NO. 28	
NO. 29	
NO. 30	
NO. 31	
NO. 32	
NO. 33	
NO. 34	
NO. 35	
NO. 36	
NO. 37	
NO. 38	
NO. 39	
NO. 40	

DATE	
BY	
REVISIONS	
PLANNING	
DESIGN	
CHECKED	
NO. 1	
NO. 2	
NO. 3	
NO. 4	
NO. 5	
NO. 6	
NO. 7	
NO. 8	
NO. 9	
NO. 10	
NO. 11	
NO. 12	
NO. 13	
NO. 14	
NO. 15	
NO. 16	
NO. 17	
NO. 18	
NO. 19	
NO. 20	
NO. 21	
NO. 22	
NO. 23	
NO. 24	
NO. 25	
NO. 26	
NO. 27	
NO. 28	
NO. 29	
NO. 30	
NO. 31	
NO. 32	
NO. 33	
NO. 34	
NO. 35	
NO. 36	
NO. 37	
NO. 38	
NO. 39	
NO. 40	



LEGEND

---	APPROXIMATE LIMITS OF CONSTRUCTION
---	SHOULDER
---	EXISTING APPROXIMATE ROW
---	TEMPORARY RAMP
---	VAR DEPTH MILLING (1 1/2" MAX)
---	GRADE TO DRAIN



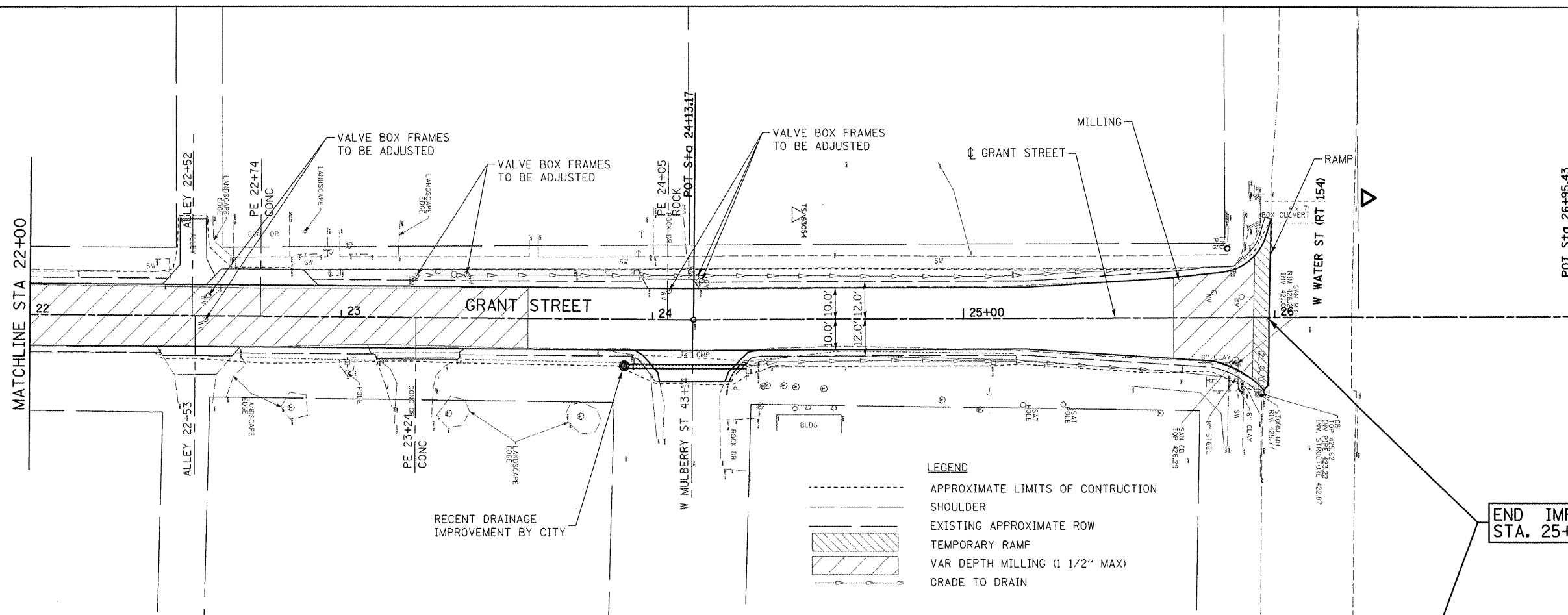
TRAVERSE STATION #61496

EL: 442.40
 STA: 21+06.61, OFF: 21.36' LT
 N=515.101,56, E=2520276.80

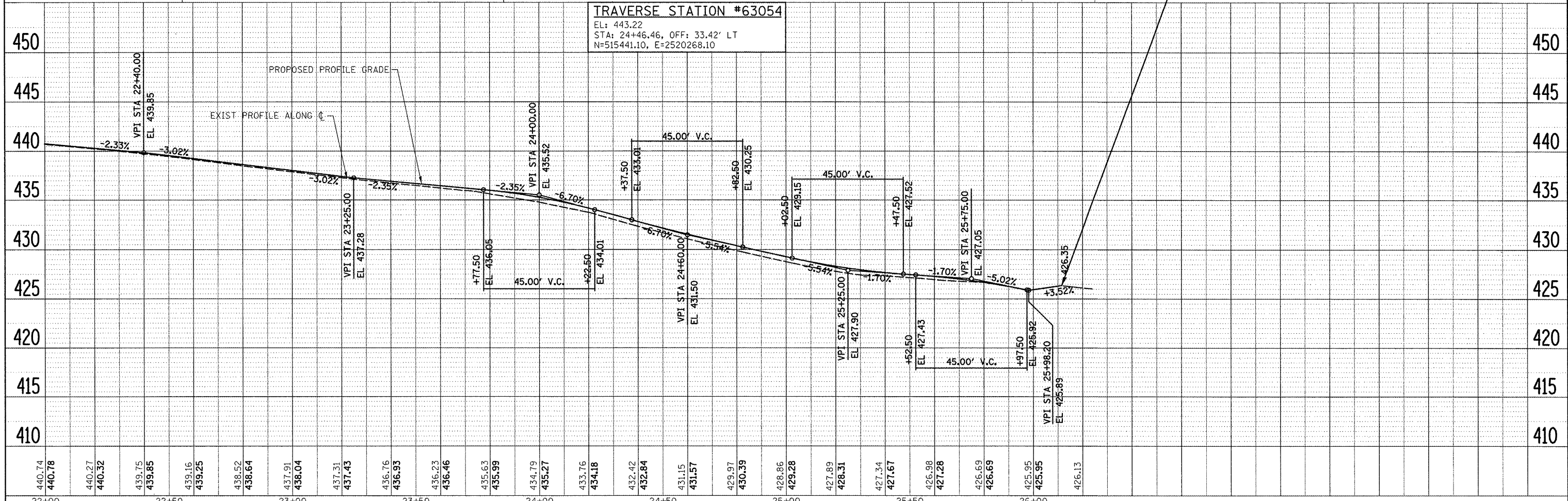
FILE NAME = H:\61496\PP\0\GRANT_8305_2.dgn	USER NAME = .USERDESCR.	DESIGNED - DLD	REVISED -	STATE OF ILLINOIS DEPARTMENT OF TRANSPORTATION	SOUTH GRANT STREET - PLAN & PROFILE	F.A.U. RTE.	SECTION	COUNTY	TOTAL SHEETS	SHEET NO.	
	PL0T SCALE = 20.0361' / IN.	DRAWN - KOJ	REVISED -			VAR	09-00028-00-RS	PERRY	12	7	
	PL0T DATE = 9/29/2004	CHECKED -	REVISED -			CONTRACT NO. 99386					
		DATE -	REVISED -			ILLINOIS FED. AID PROJECT ARA-5084 (003)					

PLAN	DESIGNED	DATE
	FLOTTED	
	ALIGNED	
	CHECKED	
	NO. 1	
	NO. 2	
	NO. 3	
	NO. 4	
	NO. 5	
	NO. 6	
	NO. 7	
	NO. 8	
	NO. 9	
	NO. 10	

PROFILE	DESIGNED	DATE
	FLOTTED	
	ALIGNED	
	CHECKED	
	NO. 1	
	NO. 2	
	NO. 3	
	NO. 4	
	NO. 5	
	NO. 6	
	NO. 7	
	NO. 8	
	NO. 9	
	NO. 10	



TRAVERSE STATION #63054
 EL: 443.22
 STA: 24+46.46, OFF: 33.42' LT
 N=515441.10, E=2520268.10

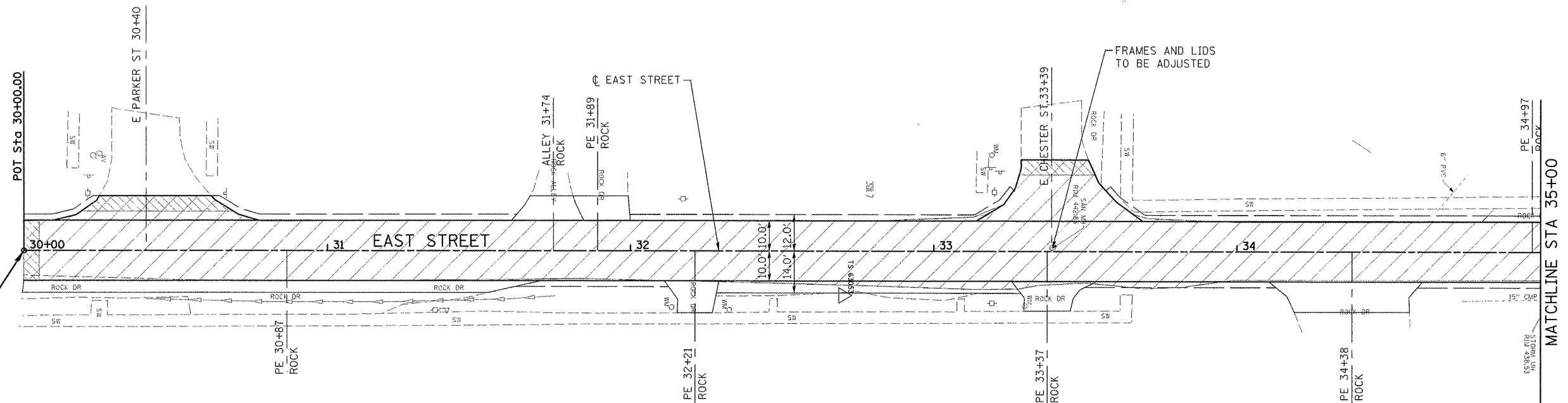


FILE NAME = H:\8149\VC_PP_DRAFT_63054_3.dgn	USER NAME = .USERDESCR	DESIGNED - DLD	REVISED -	STATE OF ILLINOIS DEPARTMENT OF TRANSPORTATION	GRANT - PLAN & PROFILE			F.A.U. RTE.	SECTION	COUNTY	TOTAL SHEETS	SHEET NO.
		DRAWN - KOJ	REVISED -					VAR	09-00028-00-RS	PERRY	12	8
		CHECKED -	REVISED -					CONTRACT NO. 99386			ILLINOIS FED. AID PROJECT ARA-5084 (003)	
		DATE -	REVISED -					SCALE:	SHEET NO.	OF SHEETS	STA.	TO STA.

PLAN	REVISION	BY	DATE
NO.	NO.		

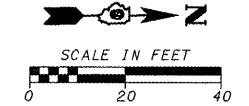
PROFILE	REVISION	BY	DATE
NO.	NO.		

BEGIN IMPROVEMENTS
STA. 30+00.00

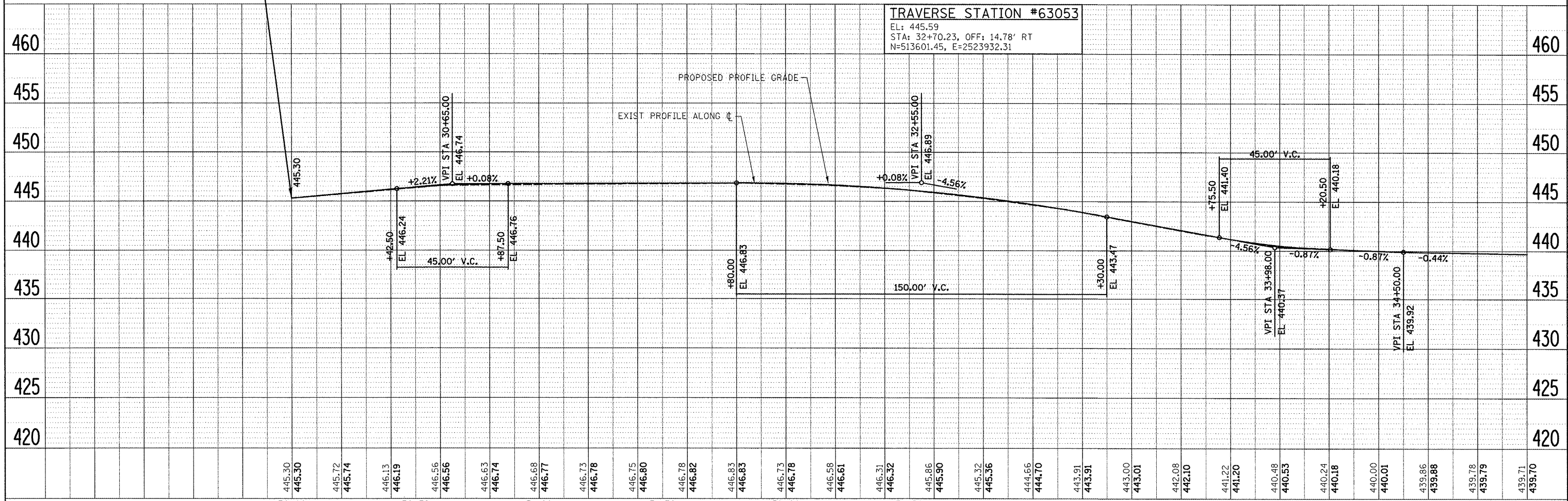


LEGEND

- - - - - APPROXIMATE LIMITS OF CONSTRUCTION
- SHOULDER
- ▨ EXISTING APPROXIMATE ROW
- ▧ TEMPORARY RAMP
- ▩ VAR DEPTH MILLING (2" MAX)
- ▭ GRADE TO DRAIN



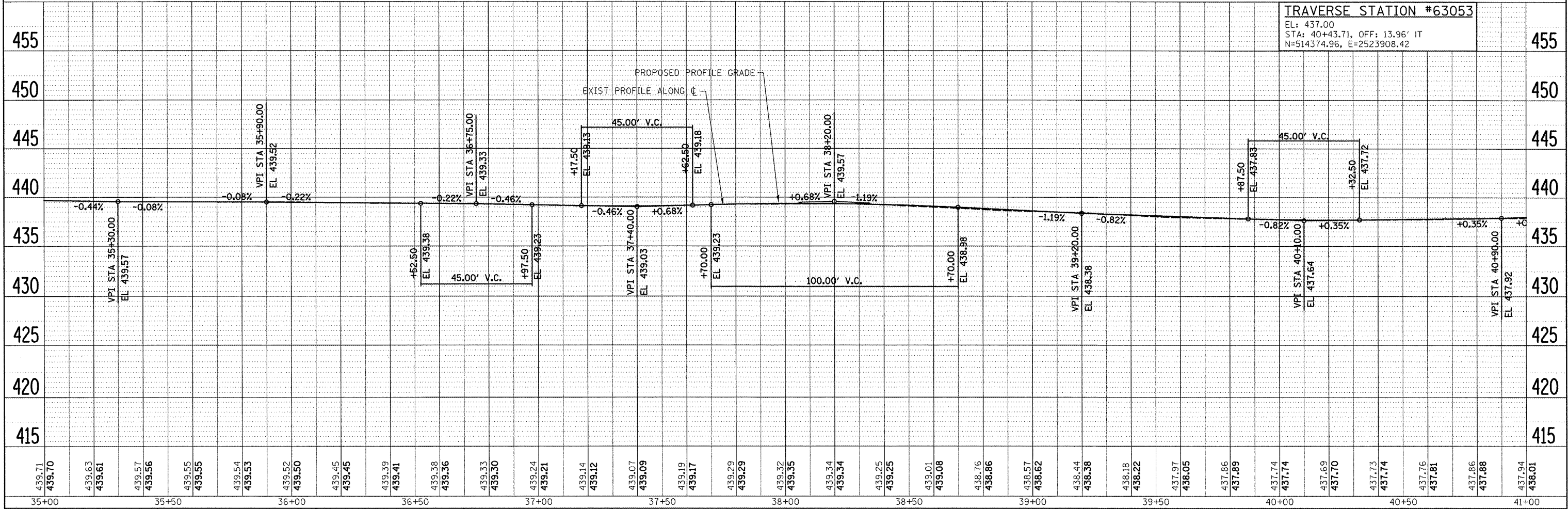
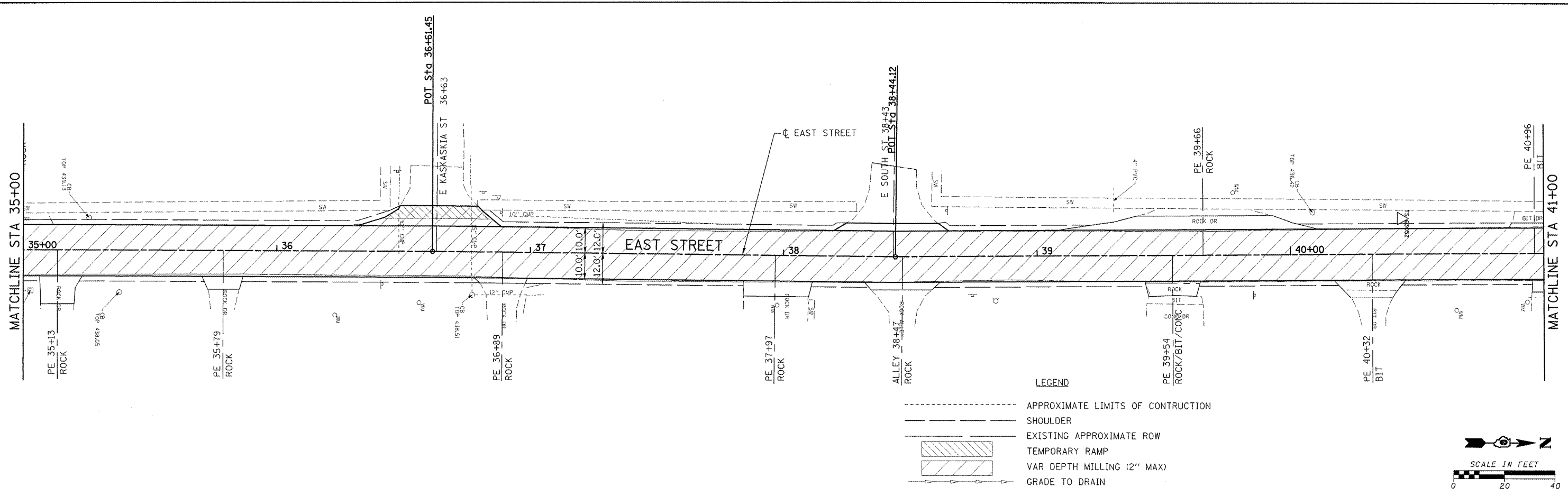
TRAVERSE STATION #63053
 EL: 445.59
 STA: 32+70.23, OFF: 14.78' RT
 N=513601.45, E=2523932.31



FILE NAME = H:\8143\VC_PP_EAST_63053.dgn	USER NAME = USERDESCR	DESIGNED - DLD	REVISED -	STATE OF ILLINOIS DEPARTMENT OF TRANSPORTATION	SOUTH EAST STREET - PLAN & PROFILE	F.A.U. RTE. VAR	SECTION	COUNTY	TOTAL SHEETS	SHEET NO.
	PLOT SCALE = 20,00000 ' / IN.	DRAWN - KOJ	REVISED -					PERRY	12	9
	PLOT DATE = 9/29/2009	CHECKED -	REVISED -			CONTRACT NO. 99386				
		DATE -	REVISED -			ILLINOIS FED. AID PROJECT ARA-5084 (003)				

PLAN	REVISIONS	DATE
NO.	BY	
NO.	BY	
NO.	BY	
NO.	BY	
NO.	BY	

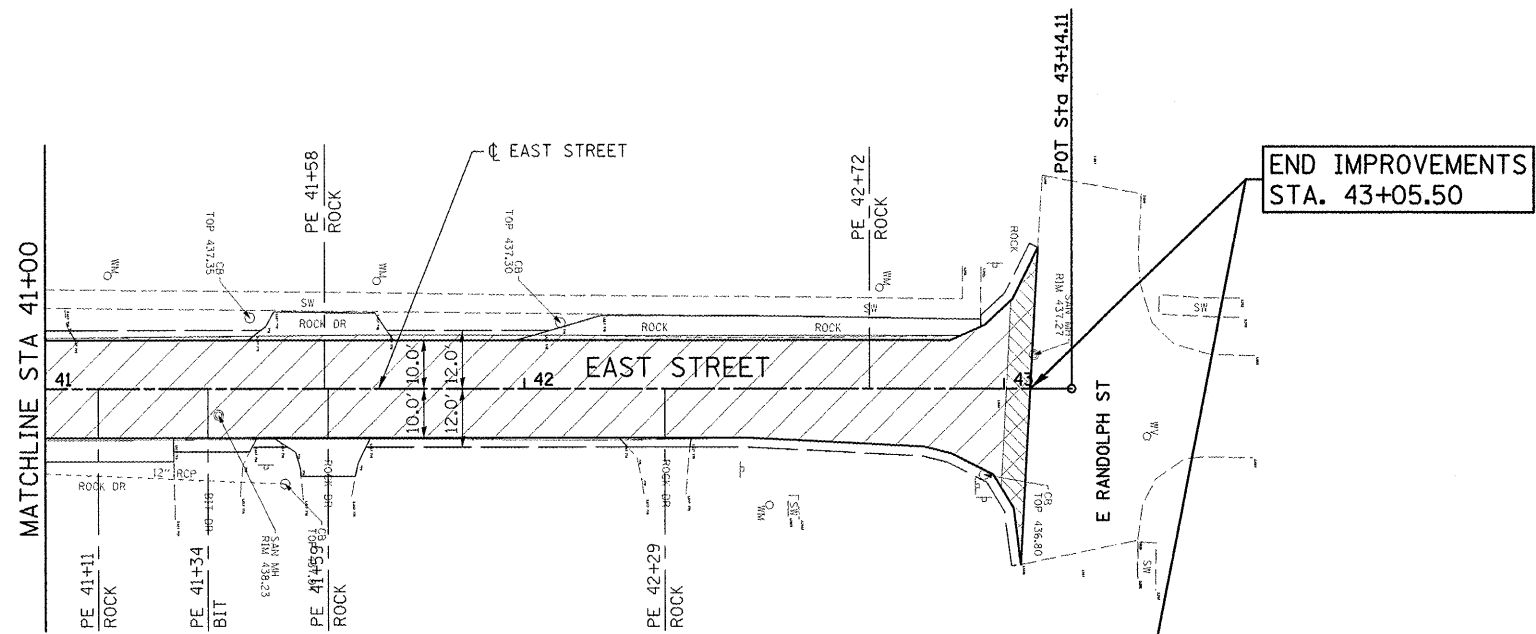
PROFILE	REVISIONS	DATE
NO.	BY	
NO.	BY	
NO.	BY	
NO.	BY	
NO.	BY	



FILE NAME = H:\814\VC_PP_EAST_6305_2.dgn	USER NAME = JUSERDES\RL	DESIGNED - DLD	REVISED -	STATE OF ILLINOIS DEPARTMENT OF TRANSPORTATION	SOUTH EAST STREET - PLAN & PROFILE	F.A.U. RTE.	SECTION	COUNTY	TOTAL SHEETS	SHEET NO.	
		DRAWN - KOJ	REVISED -			VAR	09-00028-00-RS	PERRY	12	10	
		CHECKED -	REVISED -			CONTRACT NO. 99386					
		DATE -	REVISED -			[ILLINOIS] FED. AID PROJECT ARA-5084 (1003)					

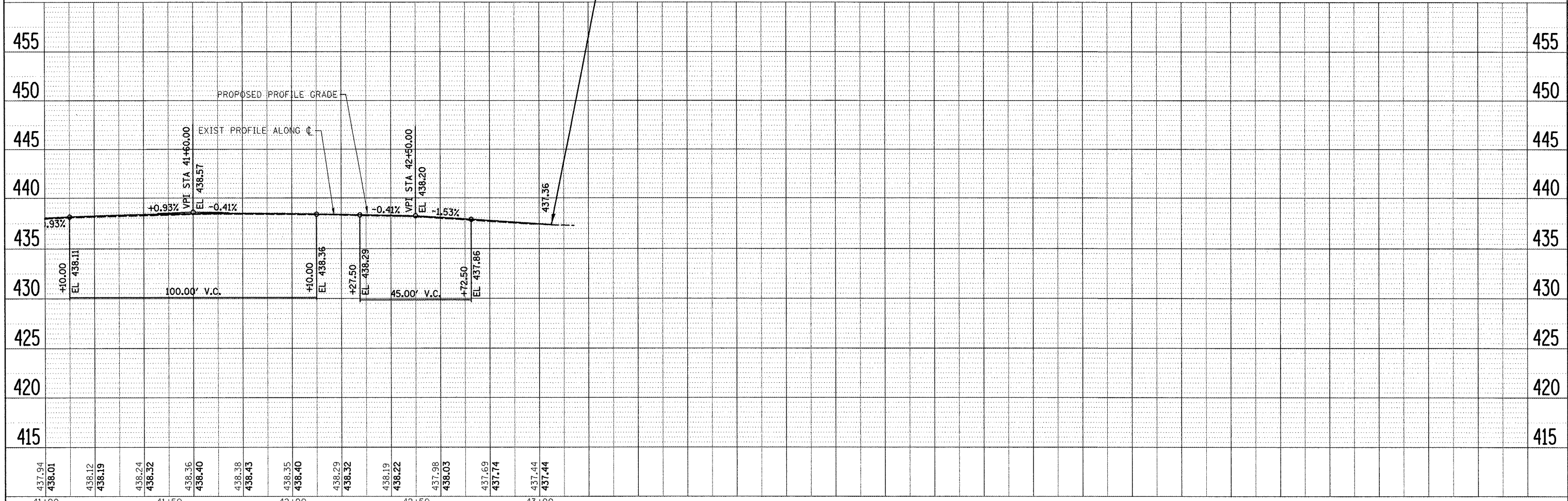
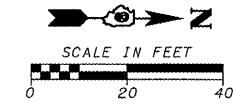
PLAN	SUBMITTED	BY	DATE
	PLOTTED		
	CHECKED		
	NO. _____		
	NOTE BOOK		
	NO. _____		
	ADD FILE NAME		

PROFILE	DESIGNED	BY	DATE
	GRADES CHECKED		
	PLOTTED		
	STRUCTURE NOTATIONS CHECKED		
	NO. _____		
	NOTE BOOK		
	NO. _____		



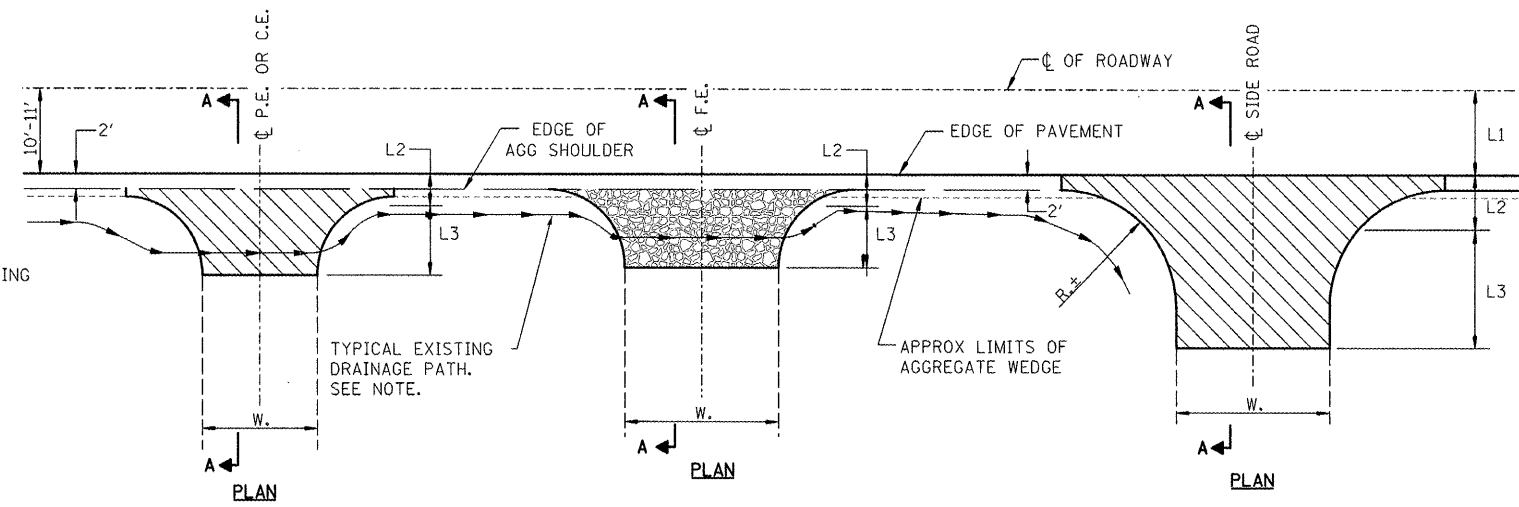
LEGEND

- APPROXIMATE LIMITS OF CONSTRUCTION
- SHOULDER
- EXISTING APPROXIMATE ROW
- [Hatched Box] TEMPORARY RAMP
- [Hatched Box] VAR DEPTH MILLING (2" MAX)
- GRADE TO DRAIN

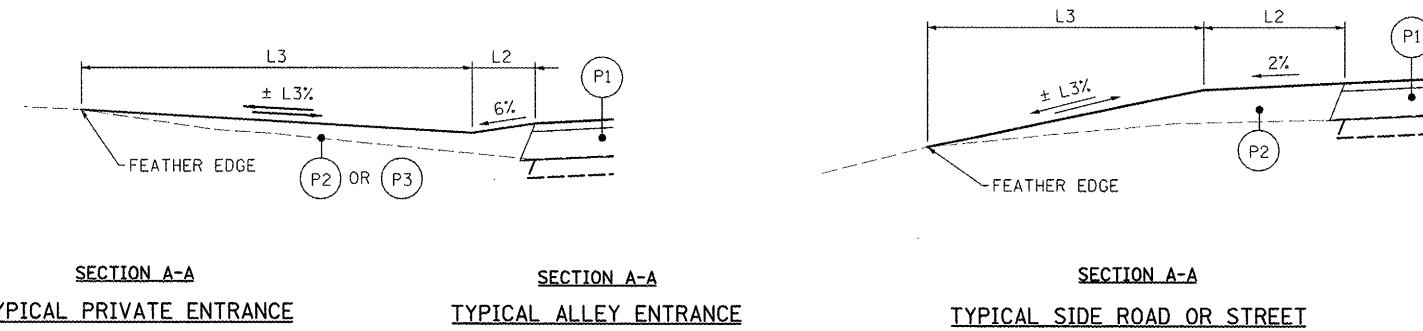


FILE NAME = H:\8149VC_PP_EAST_6305_3.dgn	USER NAME = JUSERDESCR	DESIGNED - DLD	REVISED -	STATE OF ILLINOIS DEPARTMENT OF TRANSPORTATION	SOUTH EAST STREET - PLAN & PROFILE	F.A.U. RTE.	SECTION	COUNTY	TOTAL SHEETS	SHEET NO.	
		DRAWN - KOJ	REVISED -			VAR	09-00028-00-RS	PERRY	12	11	
		CHECKED -	REVISED -			CONTRACT NO. 99386					
		DATE -	REVISED -			ILLINOIS FED. AID PROJECT ARA-5084 (003)					
		PLOT SCALE = 20.0000' / IN.		SCALE:	SHEET NO. OF SHEETS	STA.	TO STA.				

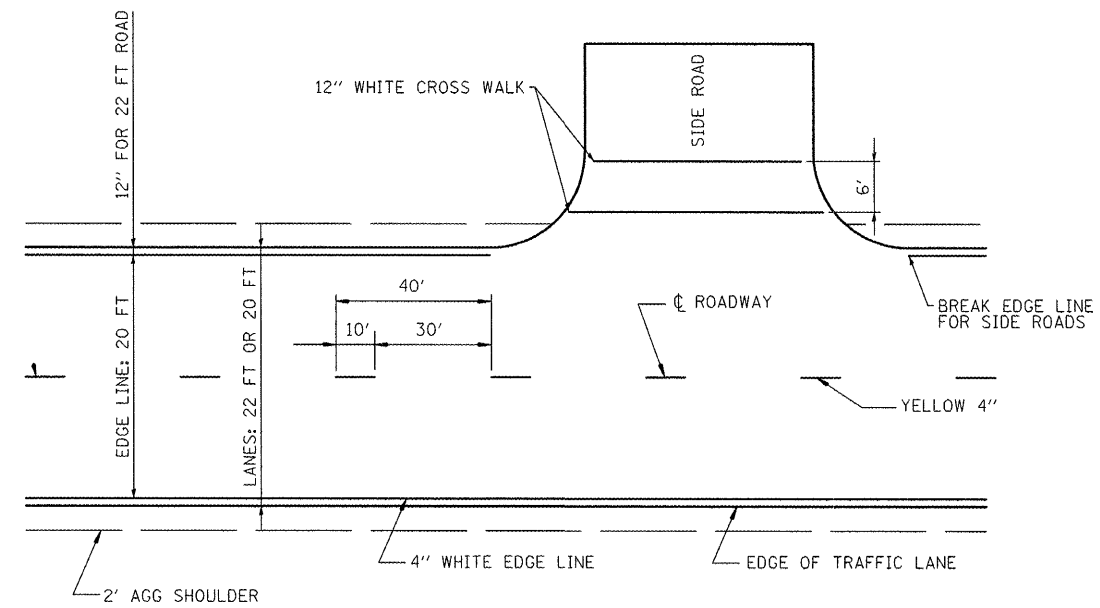
- (P1) HMA RESURFACING
- (P2) INCIDENTAL HOT-MIX ASPHALT SURFACING
- (P3) AGGREGATE SURFACE COURSE



NOTE: MANY ENTRANCES CARRY WATER OVER THE PAVEMENT. FIELD ADJUSTMENTS MAY BE NEEDED TO THE PROPOSED GRADES AFTER SHOULDERS HAVE BEEN PLACED AND FINAL DRAINAGE PATHS ARE DETERMINED.



ENTRANCE AND SIDE ROAD DETAILS



TYPICAL PAINT CENTERLINE MARKING AND PAINT EDGELINE MARKING

FILE NAME = H:\S149\VC_Details_6305.dgn
 USER NAME = .USERDESCR.
 PLOT SCALE = 5.0000" / IN.
 PLOT DATE = 9/29/2009

DESIGNED - DLD
 DRAWN - KOJ
 CHECKED -
 DATE -

REVISED -
 REVISED -
 REVISED -
 REVISED -

**STATE OF ILLINOIS
 DEPARTMENT OF TRANSPORTATION**

DETAILS

SCALE: SHEET NO. OF SHEETS STA. TO STA.

F.A.U. RTE.	SECTION	COUNTY	TOTAL SHEETS	SHEET NO.
VAR	09-00028-00-RS	PERRY	12	12
CONTRACT NO. 99386			ILLINOIS FED. AID PROJECT ARA-5084 (003)	