

F.A. RTE.	SECTION	COUNTY	TOTAL SHEETS	SHEET NO.
174	(72-8) LS-7	PEORIA	7	1
		ILLINOIS	CONTRACT NO. 68C34	

INDEX OF SHEETS

1. COVER SHEET
2. GENERAL NOTES & COMMITMENTS / CALENDAR OF LANDSCAPING MAINTENANCE
3. SUMMARY OF QUANTITIES
4. GENERAL LOCATION SHEET
5. LANDSCAPING DETAIL
6. TRAFFIC CONTROL
7. PLUG PLANTING DETAIL

HIGHWAY STANDARDS

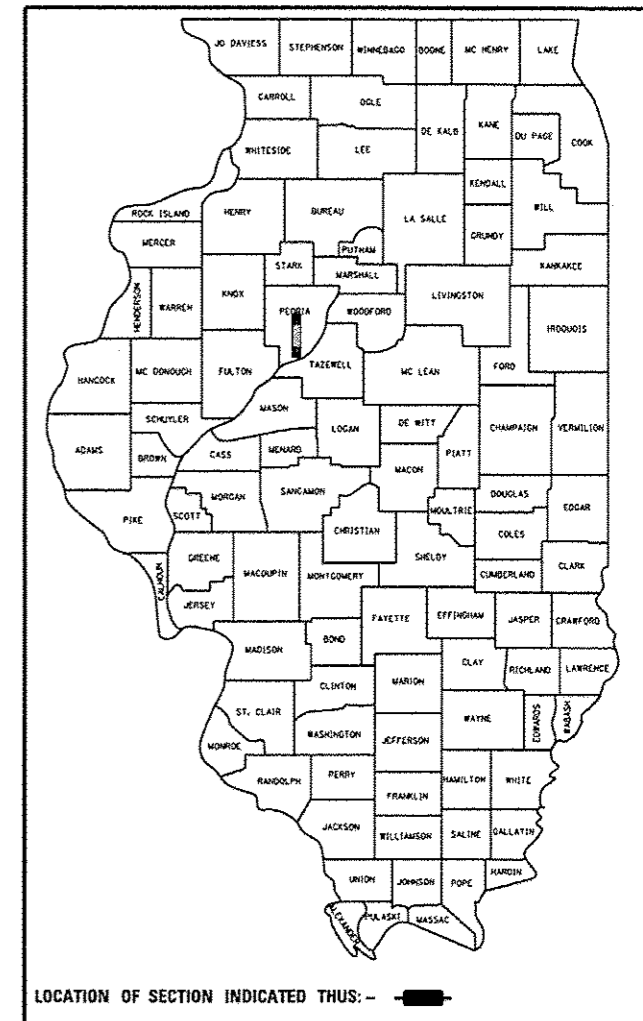
- 701101-04 701428
- 701106-02 701901-04
- 701411-09 701427-03

DEPARTMENT OF TRANSPORTATION
DIVISION OF HIGHWAYS
**PROPOSED
HIGHWAY PLANS**

FAI 74 ROUTE I-74 (WB)
SECTION (72-8) LS-7
PROJECT: LANDSCAPING
PEORIA COUNTY

C-94-021-15

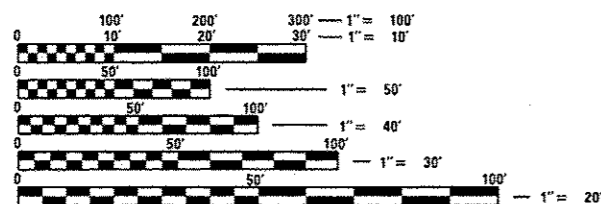
D-94-015-15



LOCATION OF SECTION INDICATED THIS: - [Symbol] -

DESCRIPTION OF WORK

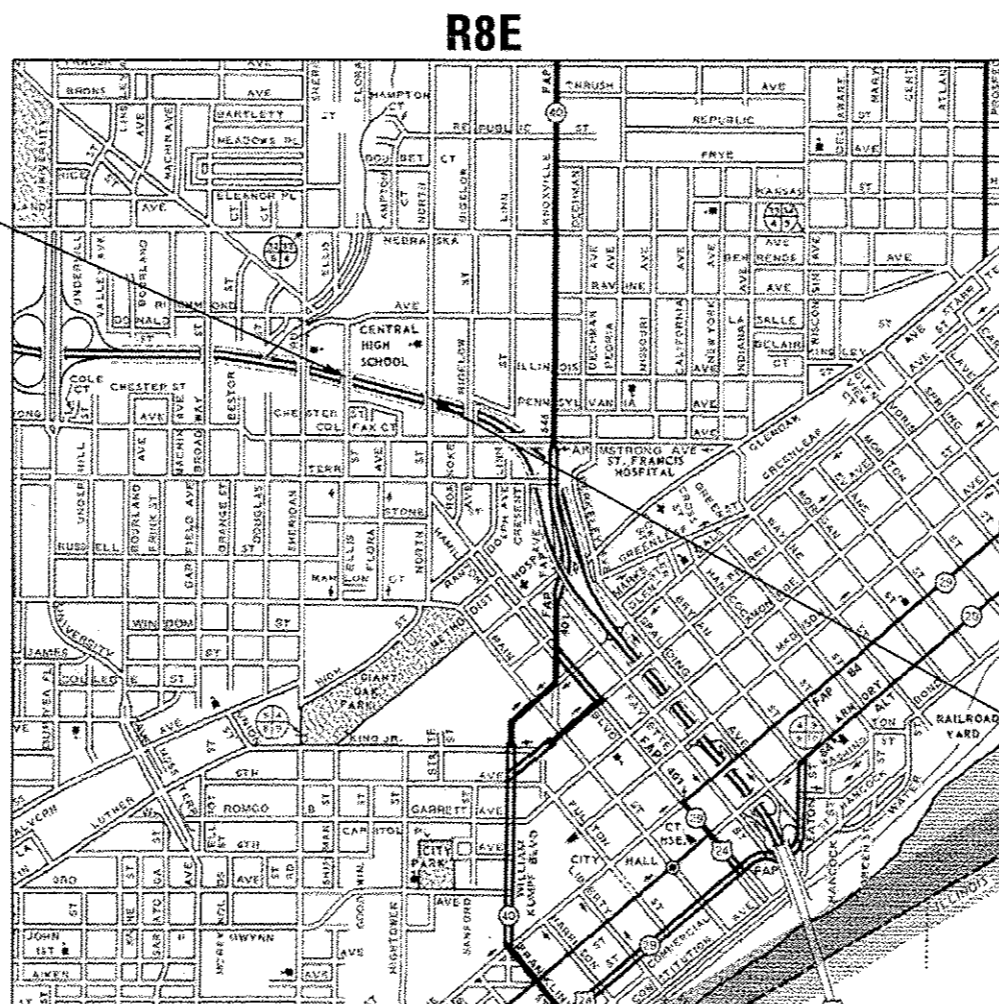
THIS PROJECT INVOLVES LANDSCAPING MAINTENANCE ALONG 174 FROM ELLIS STREET IN PEORIA TO NORTH STREET IN PEORIA.



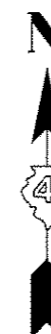
FULL SIZE PLANS HAVE BEEN PREPARED USING STANDARD ENGINEERING SCALES. REDUCED SIZED PLANS WILL NOT CONFORM TO STANDARD SCALES. IN MAKING MEASUREMENTS ON REDUCED PLANS, THE ABOVE SCALES MAY BE USED.

J.U.L.I.E.
JOINT UTILITY LOCATION INFORMATION FOR EXCAVATION
1-800-892-0123
OR 811

PROJECT ENGINEER: LEONEL CRESPO 309-671-3457
LANDSCAPE ARCHITECT: JAMES ALLWILL 309-671-4484
PROJECT DESIGNER: BRYAN MACK 309-671-3456
CONTRACT NO. 68C34
CATALOG NO. 035204-00D



GROSS LENGTH = 1,347.18 FT. = .26 MILE
NET LENGTH = 1,347.18 FT. = .26 MILE



T9N

PROJECT ENDS
STA. 148+591.62

STATE OF ILLINOIS
DEPARTMENT OF TRANSPORTATION
DIVISION OF HIGHWAYS

SUBMITTED October 19 20 15
James James
DEPUTY DIRECTOR OF HIGHWAYS, REGION ENGINEER

Dec 4 20 15
John D. Baranzelli P.E.
ENGINEER OF DESIGN AND ENVIRONMENT

Dec 4 20 15
Omer Osman P.E.
DIRECTOR OF HIGHWAYS, CHIEF ENGINEER

PRINTED BY THE AUTHORITY
OF THE STATE OF ILLINOIS

GENERAL NOTES

The contractor will be responsible for field verification of locations for all landscaping items.

The removal of dead underbrush, debris, litter, and other miscellaneous items shall be completed and will be considered included in the cost of the associated pay items.

COMMITMENTS

Commitments are not to be altered without the written consent of all parties to which the commitment was made.

No Commitments have been made on this project.

CALENDAR OF LANDSCAPING MAINTENANCE

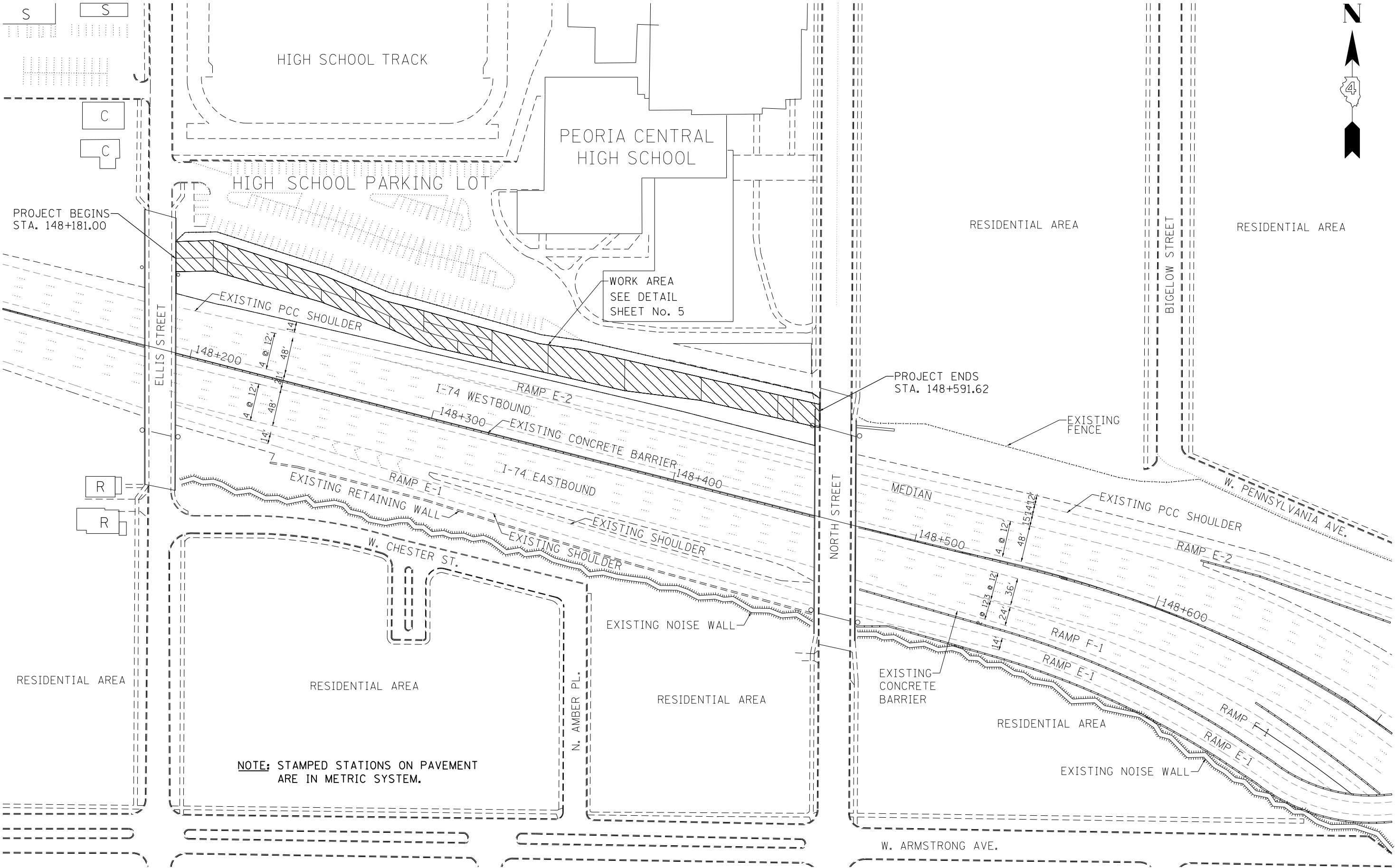
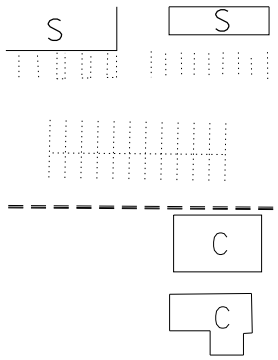
2016 WORK DATES		CONSTRUCTION WORK	ESTABLISHMENT WORK
FROM	TO		
MAY 1	JUNE 15	Planting of Perennial Plants. See Article 254.08 for installation and for period of establishment.	
JUNE 1	JUNE 15	Perennial plant period of establishment. (Inspection 30 days after written notification of planting completion.)	
JUNE 16	JULY 30	Perennial plant care and replacement as per Article 254.08.	Perennial plant care every 30 days (3 cycles).
JULY 1	OCTOBER 30		Perennial plant supplemental watering every 30 days (4 cycles).
AUGUST 1	AUGUST 30	Perennial plant care. (See Supplemental Provision)	
SEPTEMBER 1	SEPTEMBER 30	Perennial plant care. (See Supplemental Provision)	Supplemental watering of perennial plants unless deleted by the Engineer.
SEPTEMBER 1	SEPTEMBER 30	Period of establishment inspection will be performed by IDOT.	
OCTOBER 1	OCTOBER 15		Mow turf areas to a turf height of 3 inches.

FILE NAME: S:\GEN-DRAFT\STO\PLNS\504\13\68C34	USER NAME: keithbr	DESIGNED: -	REVISED: -	STATE OF ILLINOIS DEPARTMENT OF TRANSPORTATION	GENERAL NOTES, COMMITMENT & SCHEDULE	F.A. RTE.	SECTION	COUNTY	TOTAL SHEETS	SHEET NO.
174 Landscaping 2015\68C34-parial.DGN	DRAWN: -	REVISED: -	174			(72-8) LS-7	PEORIA	2	7	
PLOT SCALE: 1/8" = 1'	CHECKED: -	REVISED: -	CONTRACT NO. 68C34							
PLOT DATE: 10/22/2015	DATE: -	REVISED: -	ILLINOIS FED. AID PROJECT							
Default				SCALE:	SHEET OF SHEETS	STA. TO STA.				

CODE NO.	ITEM	UNIT	TOTAL QUANTITY	CONST. CODE
				0031
				PEORIA CO.
				100%
				STATE
67100100	MOBILIZATION	L SUM	1.0	1.0
70100420	TRAFFIC CONTROL & PROTECTION, STANDARD 701411	EACH	1.0	1.0
K0013000	PERENNIAL PLANTS, PRAIRIE TYPE, 2" DIAMETER BY 4" DEEP PLUG	UNIT	30.0	30.0
K0026850	PERENNIAL PLANT CARE	SQ YDS	10,662	10,662
K0029634	WEED CONTROL, PRE-EMERGENT GRANULAR HERBICIDE	POUND	73	73
K1005481	SHREDDED BARK MULCH 3"	SQ YD	3554.0	3554.0
K1004539	PLANT WATERING	UNIT	113.6	113.6
X2503112	MOWING (SPECIAL)	SQ YD	9,261	9,261

URBAN

FILE NAME : S:\GEN-DRAFT\STOPLNS\SQUAD10\68C34	USER NAME : kashbr 74 Landscaping 2015\68C34-aerial.dgn	DESIGNED - DRAWN -	REVISED - REVISED -	STATE OF ILLINOIS DEPARTMENT OF TRANSPORTATION	SUMMARY OF QUANTITIES	F.A. RTE.	SECTION	COUNTY	TOTAL SHEETS	SHEET NO.
Default	PLOT SCALE : 1/20,000 1" = 100'	CHECKED - DATE -	REVISED - REVISED -			174	(72-B) LS-7	PEORIA	3	7
						SCALE: SHEET OF SHEETS STA. TO STA.		CONTRACT NO. 68C34		
ILLINOIS FED. AID PROJECT										



NOTE: STAMPED STATIONS ON PAVEMENT ARE IN METRIC SYSTEM.

FILE NAME =	USER NAME = keathbr	DESIGNED -	REVISED -
S:\GEN\DRAW\STD&PLNS\SQUAD13\68C34 -	74 Landscaping 2015\68C34-aerial.DGN	DRAWN -	REVISED -
Default	PLOT SCALE = 120.0000' / in.	CHECKED -	REVISED -
	PLOT DATE = 10/22/2015	DATE -	REVISED -

**STATE OF ILLINOIS
DEPARTMENT OF TRANSPORTATION**

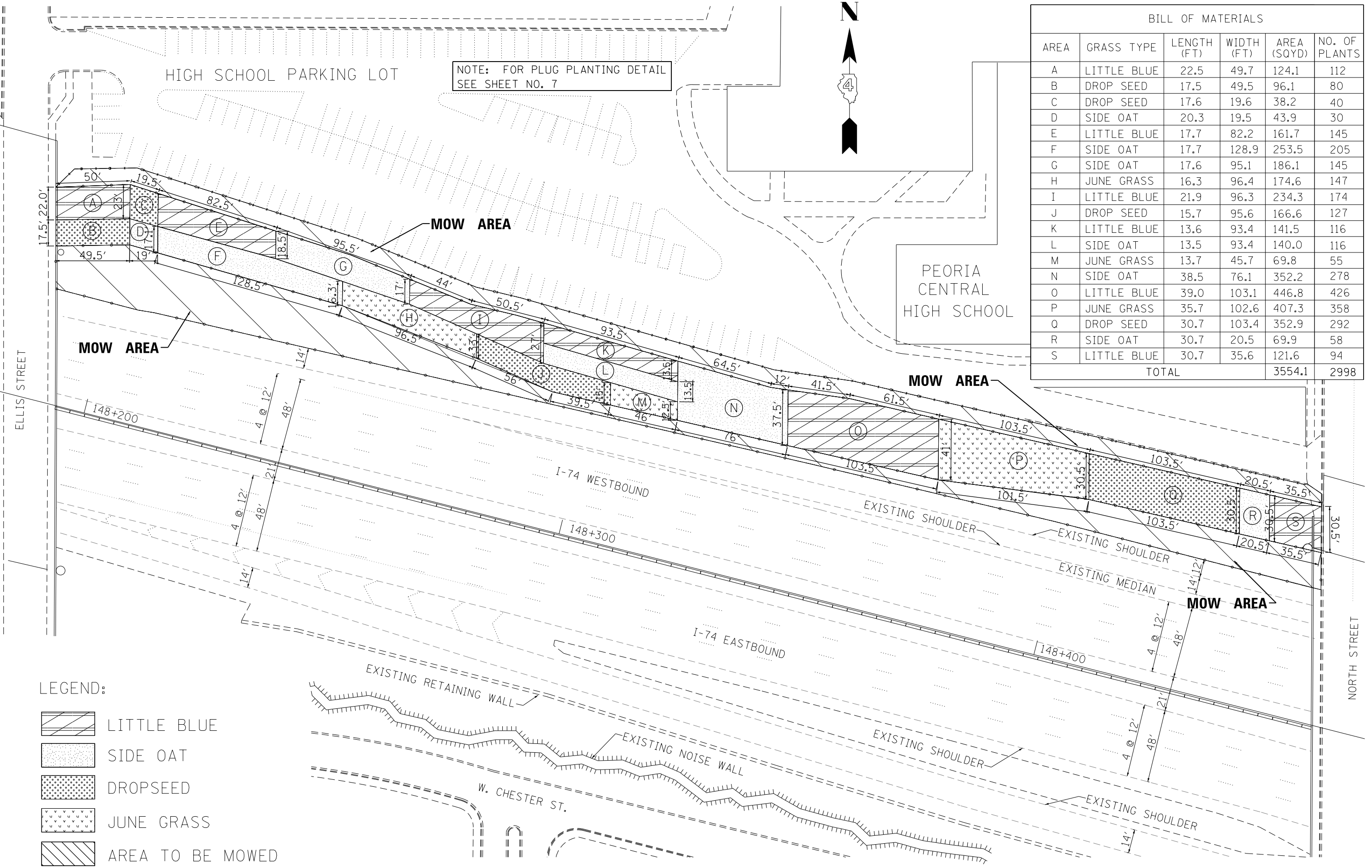
GENERAL LOCATION SHEET				
SCALE:	SHEET	OF	SHEETS	STA. TO STA.

F.A. RTE.	SECTION	COUNTY	TOTAL SHEETS	SHEET NO.
174	(72-8) LS-7	PEORIA	4	7
CONTRACT NO. 68C34				
ILLINOIS FED. AID PROJECT				



BILL OF MATERIALS					
AREA	GRASS TYPE	LENGTH (FT)	WIDTH (FT)	AREA (SQYD)	NO. OF PLANTS
A	LITTLE BLUE	22.5	49.7	124.1	112
B	DROP SEED	17.5	49.5	96.1	80
C	DROP SEED	17.6	19.6	38.2	40
D	SIDE OAT	20.3	19.5	43.9	30
E	LITTLE BLUE	17.7	82.2	161.7	145
F	SIDE OAT	17.7	128.9	253.5	205
G	SIDE OAT	17.6	95.1	186.1	145
H	JUNE GRASS	16.3	96.4	174.6	147
I	LITTLE BLUE	21.9	96.3	234.3	174
J	DROP SEED	15.7	95.6	166.6	127
K	LITTLE BLUE	13.6	93.4	141.5	116
L	SIDE OAT	13.5	93.4	140.0	116
M	JUNE GRASS	13.7	45.7	69.8	55
N	SIDE OAT	38.5	76.1	352.2	278
O	LITTLE BLUE	39.0	103.1	446.8	426
P	JUNE GRASS	35.7	102.6	407.3	358
Q	DROP SEED	30.7	103.4	352.9	292
R	SIDE OAT	30.7	20.5	69.9	58
S	LITTLE BLUE	30.7	35.6	121.6	94
TOTAL				3554.1	2998


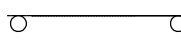

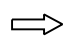
NOTE: FOR PLUG PLANTING DETAIL SEE SHEET NO. 7



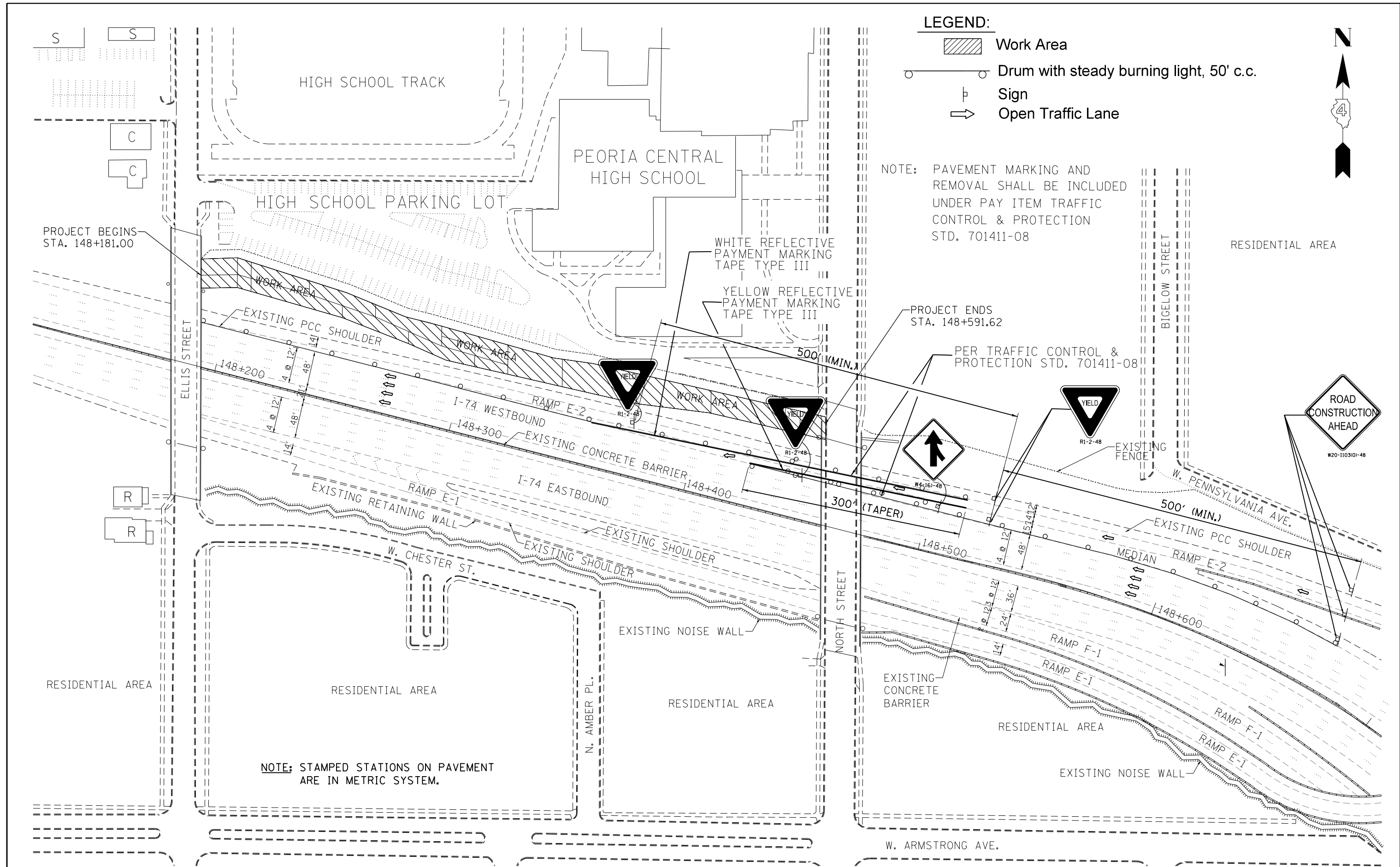
LEGEND:

	LITTLE BLUE
	SIDE OAT
	DROPSEED
	JUNE GRASS
	AREA TO BE MOWED

LEGEND:

-  Work Area
-  Drum with steady burning light, 50' c.c.
-  Sign
-  Open Traffic Lane

NOTE: PAVEMENT MARKING AND REMOVAL SHALL BE INCLUDED UNDER PAY ITEM TRAFFIC CONTROL & PROTECTION STD. 701411-08



NOTE: STAMPED STATIONS ON PAVEMENT ARE IN METRIC SYSTEM.

DRAWING NOT TO SCALE

FILE NAME =	USER NAME = keathbr	DESIGNED -	REVISED -
S:\GEN\DRAW\STD&PLNS\SQUAD13\68C34 -	74 Landscaping 2015\68C34-aerial.DGN	DRAWN -	REVISED -
Default	PLOT SCALE = 120.0000' / in.	CHECKED -	REVISED -
	PLOT DATE = 10/22/2015	DATE -	REVISED -




**STATE OF ILLINOIS
DEPARTMENT OF TRANSPORTATION**

TRAFFIC CONTROL PLAN

SCALE: SHEET OF SHEETS STA. TO STA.

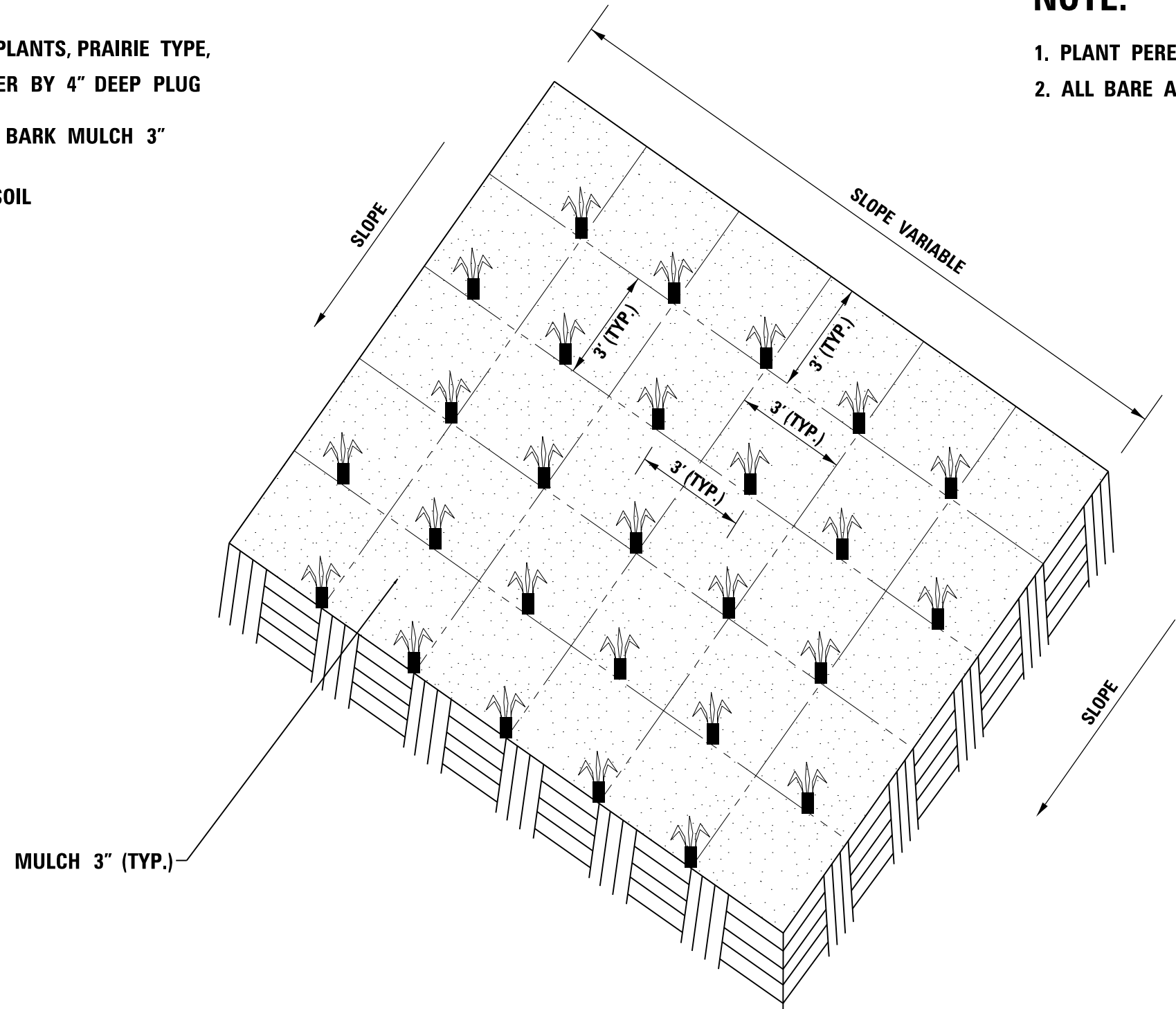
F.A. RTE.	SECTION	COUNTY	TOTAL SHEETS	SHEET NO.
174	(72-8) LS-7	PEORIA	6	7
CONTRACT NO. 68C34				
ILLINOIS FED. AID PROJECT				

LEGEND:

-  PERENIAL PLANTS, PRAIRIE TYPE,
2" DIAMETER BY 4" DEEP PLUG
-  SHREDDED BARK MULCH 3"
-  EXISTING SOIL

NOTE:

1. PLANT PERENNIAL PLANT PLUGS 3 FT. ON CENTER, STAGGARD ROWS.
2. ALL BARE AREAS COVERED WITH APPROVED MULCH 3" DEEP.



**PERENNIAL PLANT PLUG PLANTING DETAIL
(NOT TO SCALE)**

FILE NAME =	USER NAME = keithbr	DESIGNED -	REVISED -	STATE OF ILLINOIS DEPARTMENT OF TRANSPORTATION	PLUG PLANTING DETAIL			F.A. RTE.	SECTION	COUNTY	TOTAL SHEETS	SHEET NO.
S:\GEN\DRIFT\STD&PLNS\SQUAD13\68C34 -	74 Landscaping 2015\68C34-aerial.DGN	DRAWN -	REVISED -					174	(72-8) LS-7	PEORIA	7	7
Default	PLOT SCALE = 120.0000' / in.	CHECKED -	REVISED -		CONTRACT NO. 68C34			ILLINOIS FED. AID PROJECT				
	PLOT DATE = 10/22/2015	DATE -	REVISED -		SCALE:	SHEET	OF	SHEETS	STA.	TO	STA.	