

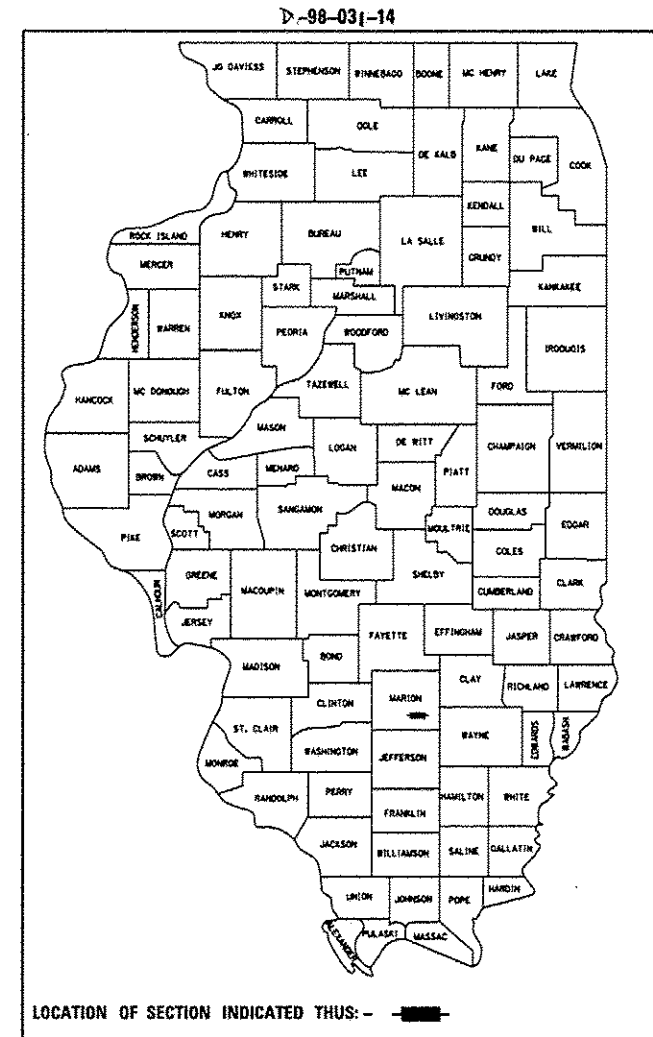
STATE OF ILLINOIS
DEPARTMENT OF TRANSPORTATION
DIVISION OF HIGHWAYS

F.A.P. RTE.	SECTION	COUNTY	TOTAL SHEETS	SHEET NO.
327A	(12,13,14)RS-1	MARION	14	1
FED. ROAD DIST. NO.		ILLINOIS	CONTRACT NO. 76H07	

FOR INDEX OF SHEETS, SEE SHEET NO. 2

**PROPOSED
HIGHWAY PLANS**

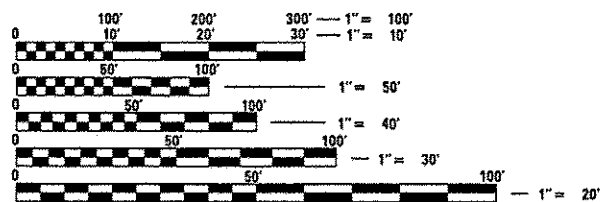
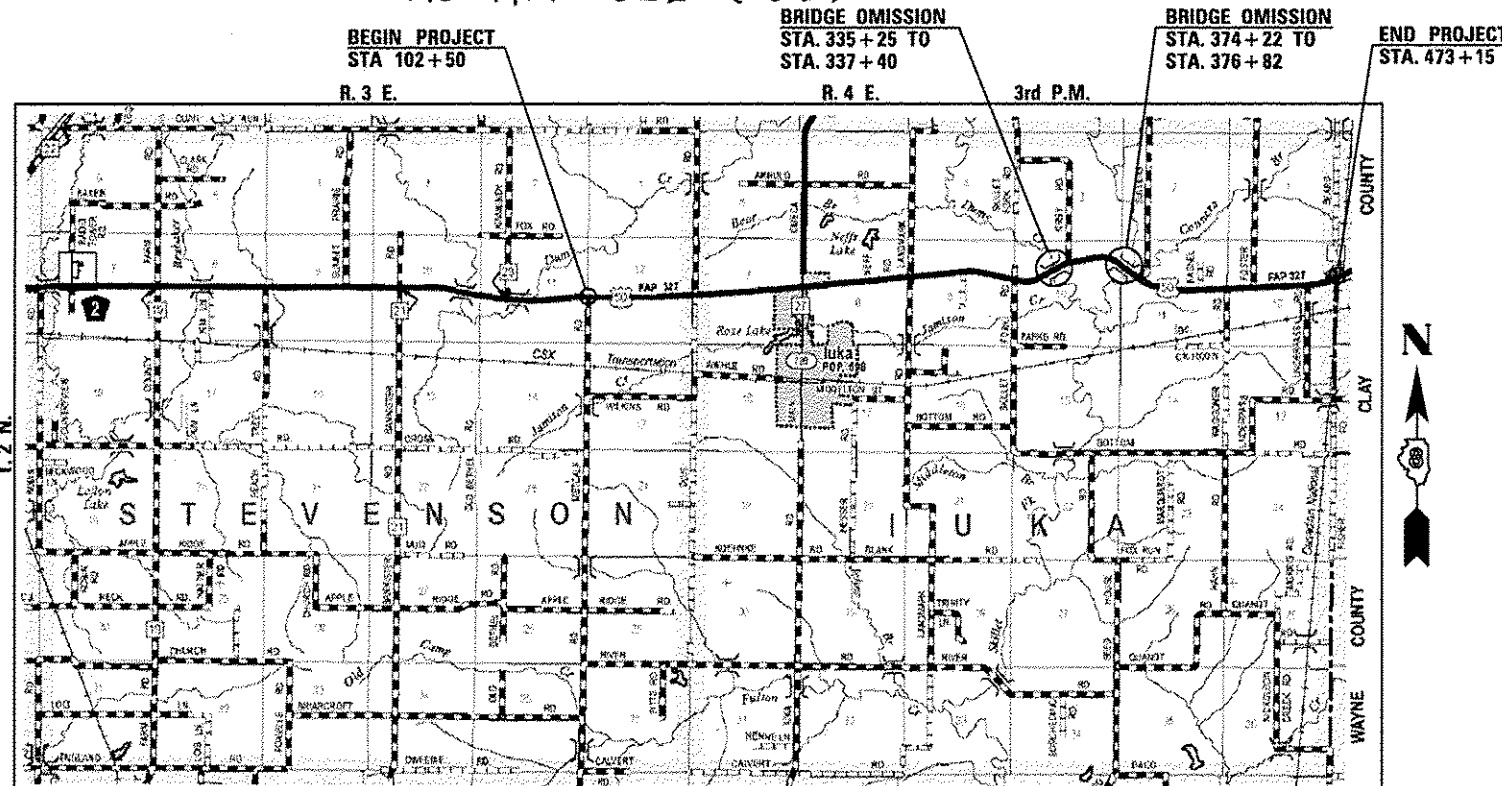
F.A.P. 327A (US 50)
SECTION (12,13,14)RS-1
RESURFACING
MARION COUNTY
C-98-032-14
ACNHPP-0327(065)



FROM METCALF RD. TO OMEGA RD./IUKA RD.
2013 ADT = 3550 (ACTUAL)
2014 ADT = 3600 (ESTIMATED)
2034 ADT = 4400 (ESTIMATED)
SU = 3.7% MU = 14.8%

FROM OMEGA RD./IUKA RD. TO WAGGONER RD.
2013 ADT = 2700 (ACTUAL)
2014 ADT = 2725 (ESTIMATED)
2034 ADT = 3300 (ESTIMATED)
SU = 4.1% MU = 18.5%

FROM WAGGONER RD. TO BEARD RD.
2013 ADT = 2800 (ACTUAL)
2014 ADT = 2825 (ESTIMATED)
2034 ADT = 3300 (ESTIMATED)
SU = 4.6% MU = 15.2%



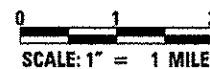
FULL SIZE PLANS HAVE BEEN PREPARED USING STANDARD ENGINEERING SCALES. REDUCED SIZED PLANS WILL NOT CONFORM TO STANDARD SCALES. IN MAKING MEASUREMENTS ON REDUCED PLANS, THE ABOVE SCALES MAY BE USED.

J.U.L.I.E.
JOINT UTILITY LOCATION INFORMATION FOR EXCAVATION
1-800-892-0123
OR 811

BEGIN: (JOINT AT METCALF RD)
LAT: 38.62691
LONG: -88.82746

END: (JOINT JUST BEFORE COUNTY LINE)
LAT: 38.62926
LONG: -88.70023

GROSS LENGTH OF PROJECT = 37065.00 FEET = 7.02 MILES
NET LENGTH OF PROJECT = 36590.00 FEET = 6.93 MILES



LOCATION MAP



Christopher P. Kohn 5/13/14
EXPIRATION: 11/30/2015

STATE OF ILLINOIS
DEPARTMENT OF TRANSPORTATION
DIVISION OF HIGHWAYS

SUBMITTED Oct 1 20 15
Deputy Director of Highways, Region Five Engineer
Dec 4 20 15
Dan D. Baranowski PE/PA
ENGINEER OF DESIGN AND ENVIRONMENT
Dec 4 20 15
Omer Osman PE/PA
DIRECTOR OF HIGHWAYS, CHIEF ENGINEER

**PRINTED BY THE AUTHORITY
OF THE STATE OF ILLINOIS**

PROJECT ENGINEER: BILLIE OWEN (618) 346-3209
PROJECT MANAGER: KAREN CHALLANDES (618) 346-3329

CONTRACT NO. 76H07

Allen Henderson & Associates, Inc.
Civil and Structural Engineers Springfield, IL
62703 Phone: (217)544-8033 IL Design Firm
No. 184-001907

CODE NO.	ITEM	UNIT	TOTAL QUANTITY	CONSTR. CODE
				80% FED 20% STATE
				ROADWAY
				0005
				RURAL
40600275	BITUMINOUS MATERIALS (PRIME COAT)	POUND	77805	77805
40600647	LEVELING BINDER (MACHINE METHOD), 1L-9.5FG, N90	TON	4101	4101
40600982	HOT-MIX ASPHALT SURFACE REMOVAL - BUTT JOINT	SQ YD	366	366
40600990	TEMPORARY RAMP	SQ YD	368	368
40603320	HOT-MIX ASPHALT SURFACE COURSE, MIX "C", N90	TON	8200	8200
40800050	INCIDENTAL HOT-MIX ASPHALT SURFACING	TON	52	52
44000155	HOT-MIX ASPHALT SURFACE REMOVAL, 1 1/2"	SQ YD	354	354
44000158	HOT-MIX ASPHALT SURFACE REMOVAL, 2 1/4"	SQ YD	8200	8200
44201803	CLASS D PATCHES, TYPE II, 13 INCH	SQ YD	486	486
44201807	CLASS D PATCHES, TYPE III, 13 INCH	SQ YD	261	261
44201809	CLASS D PATCHES, TYPE IV, 13 INCH	SQ YD	1607	1607
44300200	STRIP REFLECTIVE CRACK CONTROL TREATMENT	FOOT	70798	70798
48102100	AGGREGATE WEDGE SHOULDER, TYPE B	TON	1239	1239
48203100	HOT-MIX ASPHALT SHOULDERS	TON	3285	3285

FILE NAME :	USER NAME :	DESIGNED -	REVISED -	STATE OF ILLINOIS DEPARTMENT OF TRANSPORTATION	SUMMARY OF QUANTITIES	F.A.P. RTE.	SECTION	COUNTY	TOTAL SHEETS	SHEET NO.	
	PLOT SCALE :	CHECKED -	REVISED -			327A	(12,13,14)RS-1	MARION	14	3	
	PLOT DATE :	DRAWN -	REVISED -			CONTRACT NO. 76H07					
		CHECKED -	REVISED -			SHEET NO. 1 OF 3 SHEETS					
ILLINOIS FED. AID PROJECT											

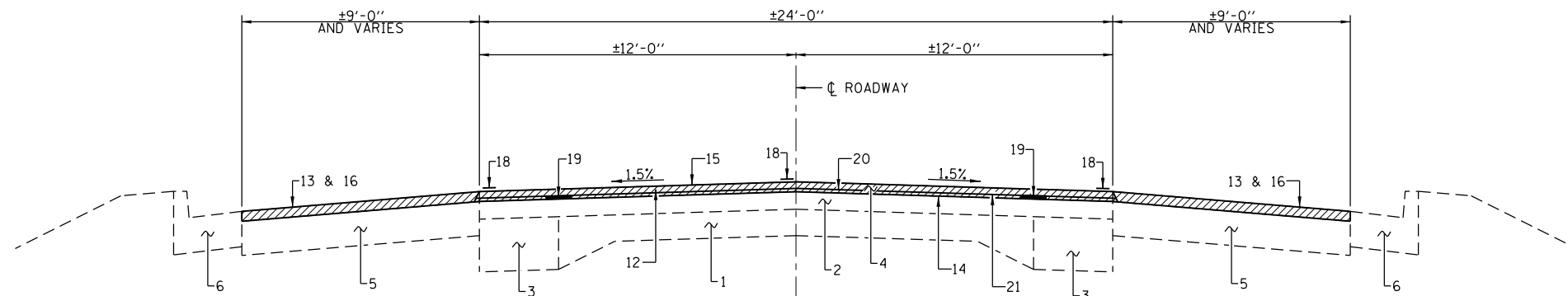
CODE NO.	ITEM	UNIT	TOTAL QUANTITY	CONSTR. CODE	
				80% FED 20% STATE	ROADWAY 0005 RURAL
* 63000003	STEEL PLATE BEAM GUARDRAIL, TYPE A, 9 FOOT POSTS	FOOT	600	600	
* 63100085	TRAFFIC BARRIER TERMINAL, TYPE 6	EACH	8	8	
* 63100167	TRAFFIC BARRIER TERMINAL, TYPE 1 (SPECIAL) TANGENT	EACH	8	8	
63200310	GUARDRAIL REMOVAL	FOOT	1577	1577	
64200108	SHOULDER RUMBLE STRIPS, 8 INCH	FOOT	73180	73180	
67000400	ENGINEER'S FIELD OFFICE, TYPE A	CAL MO	6	6	
67100100	MOBILIZATION	LSUM	1	1	
70100450	TRAFFIC CONTROL AND PROTECTION, STANDARD 701201	LSUM	1	1	
70100460	TRAFFIC CONTROL AND PROTECTION, STANDARD 701306	LSUM	1	1	
70100500	TRAFFIC CONTROL AND PROTECTION, STANDARD 701326	LSUM	1	1	
70100600	TRAFFIC CONTROL AND PROTECTION, STANDARD 701336	LSUM	1	1	
70300100	SHORT TERM PAVEMENT MARKING	FOOT	7216	7216	
70300220	TEMPORARY PAVEMENT MARKING - LINE 4"	FOOT	102702	102702	
70301000	WORK ZONE PAVEMENT MARKING REMOVAL	SQ FT	2416	2416	

14

* SPECIALTY ITEM

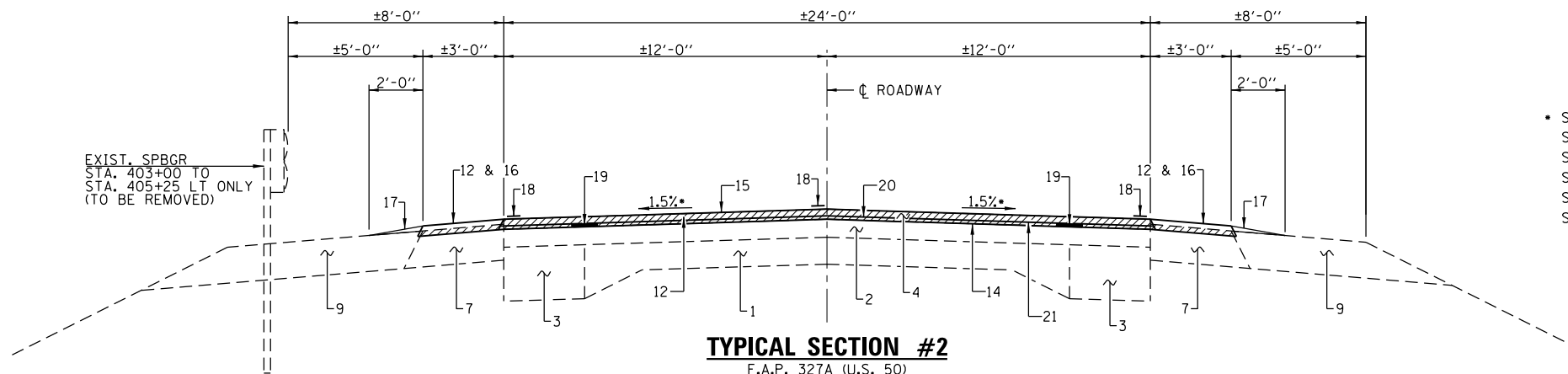
FILE NAME :	USER NAME :	DESIGNED -	REVISED -	STATE OF ILLINOIS DEPARTMENT OF TRANSPORTATION	SUMMARY OF QUANTITIES	F.A.P. RTE.	SECTION	COUNTY	TOTAL SHEETS	SHEET NO.	
	PLOT SCALE :	CHECKED -	REVISED -			327A	02,13,14RS-1	MARION	14	4	
	PLOT DATE :	DRAWN -	REVISED -			CONTRACT NO. 76H07					
		CHECKED -	REVISED -			SHEET NO. 2 OF 3 SHEETS					

ILLINOIS FED. AID PROJECT



TYPICAL SECTION #1

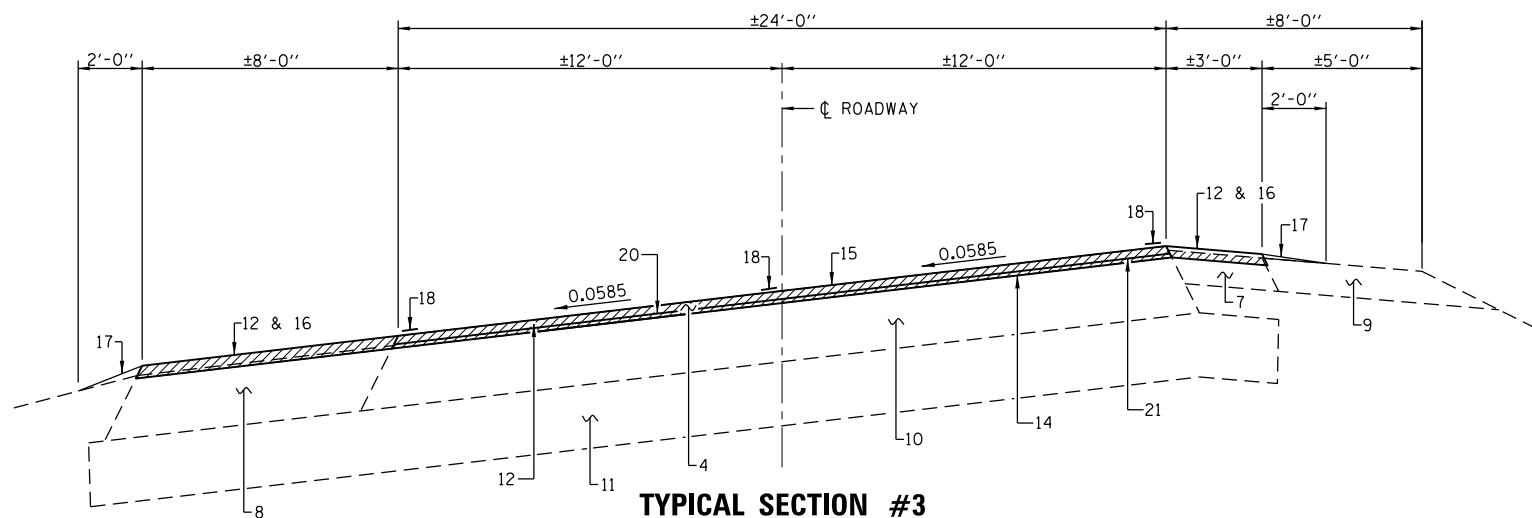
F.A.P. 327A (U.S. 50)
 STA. 208+65.51 TO STA. 211+56.45



TYPICAL SECTION #2

F.A.P. 327A (U.S. 50)
 STA. 102+50.00 TO STA. 208+65.51
 STA. 211+56.45 TO STA. 312+02.00
 STA. 339+86 TO STA. 371+67
 STA. 376+82 TO STA. 473+15

- S.E. = 0.035'/' STA. 131+14.76 TO STA. 135+70.26
- S.E. = 0.03'/' STA. 286+35.34 TO STA. 301+35.34
- S.E. = 0.0385'/' STA. 338+01.00 TO STA. 348+42.46
- S.E. = 0.06'/' STA. 355+50.14 TO STA. 369+97.34
- S.E. = 0.0525'/' STA. 380+44.09 TO STA. 392+17.84
- S.E. = 0.038'/' STA. 399+13.71 TO STA. 408+44.21



TYPICAL SECTION #3

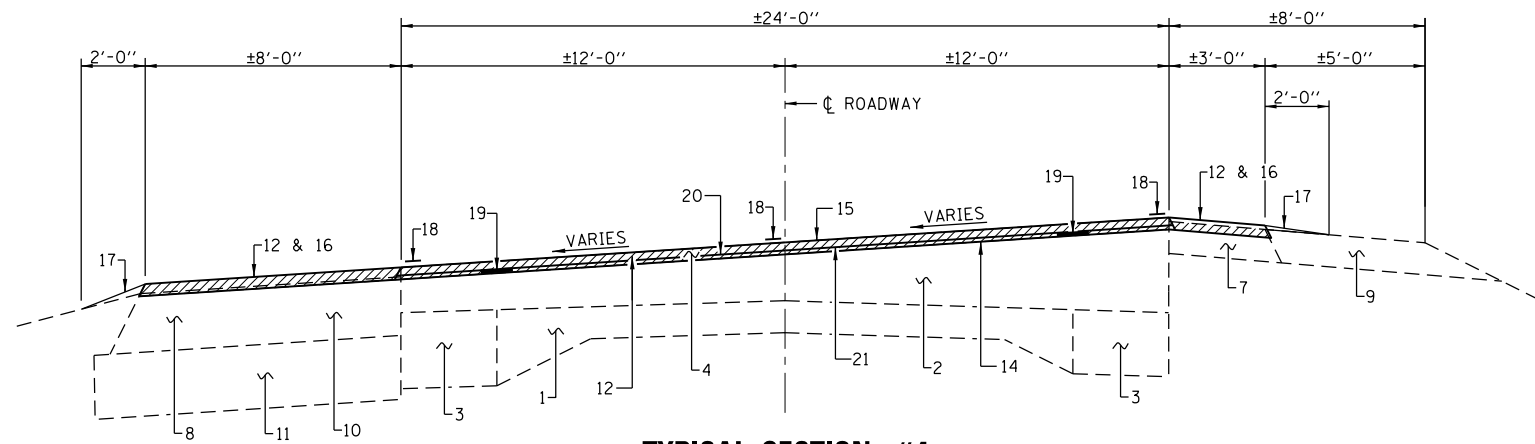
F.A.P. 327A (U.S. 50)
 STA. 316+13.85 TO STA. 328+04.90

- INDICATES HMA SURFACE REMOVAL

PAVEMENT LEGEND

1. EX 9"-6"-9" PCC PVMT
2. EX HMA RESURFACING
3. EX HMA WIDENING
4. EX BIT. CONC. SURF. CRSE.
5. EX PCC BASE CRSE. ±10"
6. EX COMB. CONC. C&G TY. B-6.24
7. EX BIT. SHLDR. ±6"
8. EX BIT. SHLDR. ±10 1/2"
9. EX AGG. SHLDR. TY. B ±6"
10. EX BIT. CONC. PVMT.
11. EX LIME MODIFIED SOIL
12. PR HMA SURF REM, 2 1/4"
13. PR HMA SURF REM, 1 1/2"
14. PR BIT MATERIAL (PRIME COAT)
15. PR HMA SURFACE COURSE, MIX "C", N90 1 1/2"
16. PR HMA SHOULDERS, 10"
17. PR AGG WEDGE SHOULDER, TYPE B
18. PR THERMOPLASTIC PVMT MARKING
19. PR STRIP REFLECTIVE CRACK CONTROL TREATMENT
20. PR HMA LEVELING BINDER 3/4"
21. PR BIT MATERIAL (PRIME COAT) BETWEEN HMA LIFTS

USER NAME = *USER*	DESIGNED -	REVISED -	<p>Allen Henderson & Associates, Inc. Civil and Structural Engineers Springfield, IL 62703 Phone: (217)544-8033 IL Design Firm No. 184-001907</p>	TYPICAL ROADWAY SECTIONS		F.A.P. RTE.	SECTION	COUNTY	TOTAL SHEETS	SHEET NO.		
PLOT SCALE = *SCALE*	DRAWN -	REVISED -		SCALE: NONE	SHEET NO. 1 OF 2 SHEETS	STA.	TO STA.	327A	(12, 13, 14)RS-1	MARION	14	6
PLOT DATE = *DATE*	CHECKED -	REVISED -						CONTRACT NO. 76H07				
	DATE -	REVISED -						FED. ROAD DIST. NO.		ILLINOIS FED. AID PROJECT		

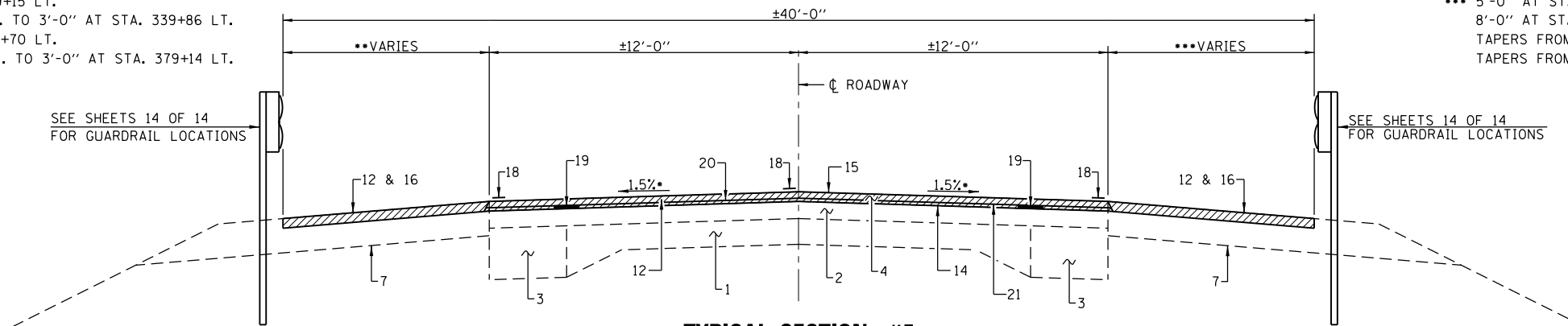


TYPICAL SECTION #4

F.A.P. 327A (U.S. 50)
 STA. 312+02.00 TO STA. 316+13.85
 STA. 328+04.90 TO STA. 330+20

** 8'-0" AT STA. 330+20 LT. TO STA. 339+15 LT.
 TAPERS FROM 8'-0" AT STA. 339+15 LT. TO 3'-0" AT STA. 339+86 LT.
 8'-0" AT STA. 372+74 LT. TO STA. 378+70 LT.
 TAPERS FROM 8'-0" AT STA. 378+70 LT. TO 3'-0" AT STA. 379+14 LT.

SEE SHEETS 14 OF 14
 FOR GUARDRAIL LOCATIONS



TYPICAL SECTION #5

F.A.P. 327A (U.S. 50)
 STA. 330+20 TO STA. 335+25
 BRIDGE OMISSION - STA. 335+25 TO STA. 337+40
 STA. 337+40 TO STA. 339+86
 STA. 371+67 TO STA. 374+22
 BRIDGE OMISSION - STA. 374+22 TO STA. 376+82

*** 5'-0" AT STA. 330+20 RT. TO STA. 332+86 RT.
 8'-0" AT STA. 332+86 RT. TO STA. 338+80 RT.
 TAPERS FROM 5'-0" AT STA. 371+67 RT. TO 8'-0" AT STA. 371+97 RT.
 TAPERS FROM 8'-0" AT STA. 377+95 RT. TO 5'-0" AT STA. 379+14 RT.

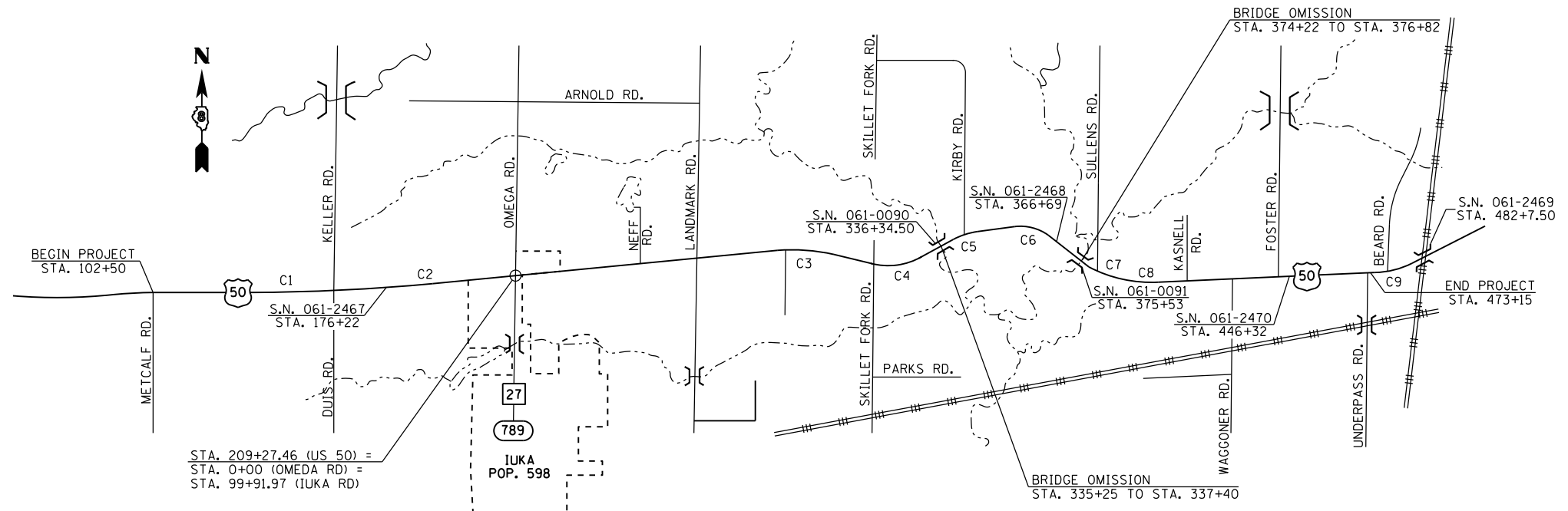
SEE SHEETS 14 OF 14
 FOR GUARDRAIL LOCATIONS

- INDICATES HMA SURFACE REMOVAL

PAVEMENT LEGEND

1. EX 9"-6"-9" PCC PVMT
2. EX HMA RESURFACING
3. EX HMA WIDENING
4. EX BIT. CONC. SURF. CRSE.
5. EX PCC BASE CRSE. ±10"
6. EX COMB. CONC. C&G TY. B-6.24
7. EX BIT. SHLDR. ±6"
8. EX BIT. SHLDR. ±10 1/2"
9. EX AGG. SHLDR. TY. B ±6"
10. EX BIT. CONC. PVMT.
11. EX LIME MODIFIED SOIL
12. PR HMA SURF REM, 2 1/4"
13. PR HMA SURF REM, 1 1/2"
14. PR BIT MATERIAL (PRIME COAT)
15. PR HMA SURFACE COURSE, MIX "C", N90 1 1/2"
16. PR HMA SHOULDERS, TON
17. PR AGG WEDGE SHOULDER, TYPE B
18. PR THERMOPLASTIC PVMT MARKING
19. PR STRIP REFLECTIVE CRACK CONTROL TREATMENT
20. PR HMA LEVELING BINDER 3/4"
21. PR BIT MATERIAL (PRIME COAT) BETWEEN HMA LIFTS

USER NAME = *USER*	DESIGNED -	REVISED -	 Allen Henderson & Associates, Inc. Civil and Structural Engineers Springfield, IL 62703 Phone: (217)544-8033 IL Design Firm No. 184-001907	TYPICAL ROADWAY SECTIONS		F.A.P. RTE.	SECTION	COUNTY	TOTAL SHEETS	SHEET NO.		
PLOT SCALE = *SCALE*	DRAWN -	REVISED -		SCALE: NONE	SHEET NO. 2 OF 2 SHEETS	STA.	TO STA.	327A	(12, 13, 14)RS-1	MARION	14	7
PLOT DATE = *DATE*	CHECKED -	REVISED -						CONTRACT NO. 76H07				
	DATE -	REVISED -						FED. ROAD DIST. NO. ILLINOIS FED. AID PROJECT				



PLAN

STA. 209+27.46 (US 50) =
 STA. 0+00 (OMEDA RD) =
 STA. 99+91.97 (IUKA RD)

CURVE #1

P.I. STA. 133+42.55
 $\Delta = 03^{\circ}-43'-21''$
 $D = 1^{\circ}-59'-07''$
 $T = 93.78'$
 $R = 2886.00'$
 $L = 953.30'$
 $E = 1.323'$
 S.E. = 0.035'/FT.
 P.C. STA. 132+48.76
 P.T. STA. 134+36.28
 SA: STA. 131+14.76 TO STA. 133+14.76
 STA. 133+70.26 TO STA. 135+70.26

CURVE #2

P.I. STA. 193+42.48
 $\Delta = 01^{\circ}-27'-30''$
 $D = 00^{\circ}-07'-57''$
 $T = 550.03'$
 $R = 43215.76'$
 $L = 1100.00'$
 $E = 3.50'$
 P.C. STA. 187+92.45
 P.T. STA. 198+92.45

CURVE #3

P.I. STA. 293+94.42
 $\Delta = 18^{\circ}-20'-21''$
 $D = 01^{\circ}-29'-52''$
 $T = 617.48'$
 $R = 3825.31'$
 $L = 1224.40'$
 $E = 49.52'$
 S.E. = 0.030'/FT.
 P.C. STA. 287+76.94
 P.T. STA. 300+01.34
 SA: STA. 286+35.34 TO STA. 288+42.94
 STA. 299+35.34 TO STA. 301+35.34

CURVE #4

P.I. STA. 322+46.30
 $\Delta = 41^{\circ}-42'-13''$
 $D = 02^{\circ}-30'-04''$
 $T = 872.56'$
 $R = 2290.79'$
 $L = 1667.38'$
 $E = 160.55'$
 S.E. = 0.0385'/FT.
 P.C. STA. 313+73.80
 P.T. STA. 330+41.19
 SA: STA. 312+03.80 TO STA. 314+58.80
 STA. 329+56.19 TO STA. 332+11.19

CURVE #5

P.I. STA. 342+38.83
 $\Delta = 19^{\circ}-07'-56''$
 $D = 02^{\circ}-00'-18''$
 $T = 481.59'$
 $R = 2857.62'$
 $L = 934.22'$
 $E = 40.297'$
 S.E. = 0.0385'/FT.
 P.C. STA. 337+54.24
 P.T. STA. 347+08.46
 SA: STA. 336+20.24 TO STA. 338+20.24
 STA. 346+42.46 TO STA. 348+42.46

CURVE #6

P.I. STA. 363+09.40
 $\Delta = 47^{\circ} 04' 45''$
 $D = 03^{\circ} 59' 48''$
 $T = 625.26'$
 $R = 1433.56'$
 $L = 1179.20'$
 $E = 130.42'$
 S.E. = 0.06'/FT.
 P.C. STA. 356+84.14
 P.T. STA. 368+63.34
 SA: STA. 355+50.14 TO STA. 357+50.14
 STA. 367+97.34 TO STA. 369+97.34

CURVE #7

P.I. STA. 386+09.40
 $\Delta = 27^{\circ} 10' 45''$
 $D = 03^{\circ} 10' 03''$
 $T = 461.56''$
 $R = 1909.38'$
 $L = 905.75'$
 $E = 55.99'$
 S.E. = 0.0525'/FT.
 P.C. STA. 381+75.09
 P.T. STA. 390+83.84
 SA: STA. 380+44.09 TO STA. 382+44.09
 STA. 390+17.04 TO STA. 392+17.04

CURVE #8

P.I. STA. 403+80.28
 $\Delta = 12^{\circ} 28' 23''$
 $D = 01^{\circ} 52' 58''$
 $T = 332.56'$
 $R = 3043.23'$
 $L = 662.50'$
 $E = 18.12'$
 S.E. = 0.038'/FT.
 P.C. STA. 400+47.71
 P.T. STA. 407+10.21
 SA: STA. 399+13.71 TO STA. 401+13.71
 STA. 406+44.21 TO STA. 408+44.21

SIDE ROAD	STATION
METCALF RD.	103+56 LT.
KELLER RD.	156+17 LT.
DUIS RD.	156+17 RT.
OMEGA RD.	209+27.46 LT.
IUKA RD.	209+27.46 RT.
NEFF RD.	246+08 LT.
LANDMARK RD.	262+58 LT. & RT.
2050 E	288+78 RT.
SKILLET FORK RD.	313+80.5 RT.
KIRBY RD.	343+47 LT.
SULLENS RD.	382+42 LT.
KASNELL RD.	413+06 LT.
WAGGONER RD.	426+21 RT.
FOSTER RD.	439+23 LT.
UNDERPASS RD.	465+82 RT.

GUARDRAIL SCHEDULE					
LOCATION	TRAFFIC BARRIER TERMINAL TYPE 1 (SPECIAL) TANGENT EACH	STEEL PLATE BEAM GUARDRAIL TYPE A 9' POSTS FOOT	TRAFFIC BARRIER TERMINAL TYPE 6 EACH	GUARDRAIL MARKERS, TYPE A EACH	TERMINAL MARKERS- DIRECT APPLIED EACH
STA. 333+49.3 TO STA. 333+99.3 RT.	1			1	1
STA. 333+99.3 TO STA. 335+11.8 RT.		112.5		1	
STA. 335+11.8 TO STA. 335+55 RT.			1	1	
STA. 334+24.3 TO STA. 334+74.3 LT.	1			1	1
STA. 334+74.3 TO STA. 335+11.8 LT.		37.5			
STA. 335+11.8 TO STA. 335+55 LT.			1	1	
STA. 337+10 TO STA. 337+53.2 RT.			1	1	
STA. 337+53.2 TO STA. 337+90.7 RT.		37.5			
STA. 337+90.7 TO STA. 338+40.7 RT.	1			1	1
STA. 337+10 TO STA. 337+53.2 LT.			1	1	
STA. 337+53.2 TO STA. 338+65.7 LT.		112.5		1	
STA. 338+65.7 TO STA. 339+15.7 LT.	1			1	1
STA. 372+52 TO STA. 373+02 RT.	1			1	1
STA. 373+02 TO STA. 374+14.5 RT.		112.5		1	
STA. 374+14.5 TO STA. 374+52 RT.			1	1	
STA. 373+27 TO STA. 373+77 LT.	1			1	1
STA. 373+77 TO STA. 374+14.5 LT.		37.5			
STA. 374+14.5 TO STA. 374+52 LT.			1	1	
STA. 376+52 TO STA. 376+95.2 RT.			1	1	
STA. 376+95.2 TO STA. 377+32.7 RT.		37.5			
STA. 377+32.7 TO STA. 377+82.7 RT.	1			1	1
STA. 376+52 TO STA. 376+95.2 LT.			1	1	
STA. 376+95.2 TO STA. 378+07.7 LT.		112.5		1	
STA. 378+07.7 TO STA. 378+57.7 LT.	1			1	1
TOTAL	8	600	8	20	8

STRIP REFLECTIVE CRACK CONTROL TREATMENT SCHEDULE	
LOCATION	QUANTITY (FOOT)
STA. 102+50 TO STA. 316+14 9' LT. & RT.	42728
STA. 328+05 TO STA. 335+25 9' LT. & RT.	1440
STA. 337+40 TO STA. 374+22 9' LT. & RT.	7364
STA. 376+82 TO STA. 473+15 9' LT. & RT.	19266
TOTAL	70798

SURVEY MONUMENT COVER ASSEMBLY SCHEDULE	
LOCATION	QUANTITY (EACH)
NOTE: STATIONS ARE APPROXIMATE	
STA. 132+00	1
TOTAL	1

GUARDRAIL REMOVAL	
LOCATION	QUANTITY (FOOT)
STA. 334+23 TO STA. 335+55 LT.	132
STA. 333+49 TO STA. 335+55 RT.	206
STA. 337+10 TO STA. 339+16 LT.	206
STA. 337+10 TO STA. 338+42 RT.	132
STA. 372+46 TO STA. 374+52 RT.	206
STA. 373+20 TO STA. 374+52 LT.	132
STA. 376+52 TO STA. 377+84 RT.	132
STA. 376+52 TO STA. 378+58 LT.	206
STA. 403+00 TO STA. 405+25	225
TOTAL	1577

SHOULDER RUMBLE STRIP				
				SHOULDER RUMBLE STRIPS, 8"
STATION	TO	STATION	COMMENTS	FOOT
102+50	TO	208+66		21231.02
208+66	TO	211+56		581.88
211+56	TO	312+02		20091.1
312+02	TO	316+14		823.7
316+14	TO	328+05		2382.1
328+05	TO	330+20		430.2
330+20	TO	335+25		1010
335+25	TO	337+40	OMISSION	
337+40	TO	339+86		492
339+86	TO	371+67		6362
371+67	TO	374+22		510
374+22	TO	376+82	OMISSION	
376+82	TO	473+15		19266
			TOTAL	73180

PAVEMENT MARKING SCHEDULE


LOCATION	LENGTH	THERMOPLASTIC PAVEMENT MARKING			TEMPORARY PAVEMENT MARKING			POLYUREA PAVEMENT MARKING			PAVEMENT MARKING REMOVAL	RAISED REFLECTIVE PAVEMENT MARKER REMOVAL	RAISED REFLECTIVE PAVEMENT MARKERS	SHORT TERM PAVEMENT MARKING	WORK ZONE PAVEMENT MARKING REMOVAL
		4"			4"			4"							
		SOLID WHITE	SKIP-DASH	SOLID YELLOW	SOLID WHITE	SKIP-DASH	SOLID YELLOW	SOLID WHITE	SKIP-DASH	SOLID YELLOW					
		EDGE LINE	YELLOW CENTERLINE	CENTERLINE	EDGE LINE	YELLOW CENTERLINE	CENTERLINE	EDGE LINE	YELLOW CENTERLINE	CENTERLINE					
FOOT	FOOT	FOOT	FOOT	FOOT	FOOT	FOOT	FOOT	FOOT	SQ FT	EACH	EACH	FOOT	SQ FT		
STA. 102+50 TO STA. 106+00	350	640		700	640		700					4	4	62	21
STA. 106+00 TO STA. 116+50	1050	2100	270 RT	1050 LT	2100	270 RT	1050 LT					13	13	210	70
STA. 116+50 TO STA. 122+50	600	1200	150 LT	600 RT	1200	150 LT	600 RT					8	8	120	40
STA. 122+50 TO STA. 125+00	250	500	60		500	60						3	3	50	17
STA. 125+00 TO STA. 132+60	760	1320	190 RT	760 LT	1320	190 RT	760 LT					10	10	132	44
STA. 132+60 TO STA. 186+00	5340	10564	1340		10564	1340						67	67	1060	353
STA. 186+00 TO STA. 191+00	500	1000	130 LT	500 RT	1000	130 LT	500 RT					6	6	100	34
STA. 191+00 TO STA. 196+65	565	1130	140		1130	140						7	7	113	38
STA. 196+65 TO STA. 203+00	635	1270	160 RT	635 LT	1270	160 RT	635 LT					8	8	127	43
STA. 203+00 TO STA. 283+25	8025	15707	2010		15707	2010						100	100	1567	522
STA. 283+25 TO STA. 288+25	500	1000	130 LT	500 RT	1000	130 LT	500 RT					6	6	100	34
STA. 288+25 TO STA. 298+00	975	1833		1950	1833		1950					12	12	191	64
STA. 298+00 TO STA. 301+00	300	600	80 RT	300 LT	600	80 RT	300 LT					4	4	60	20
STA. 301+00 TO STA. 309+00	800	1600	200		1600	200						10	10	160	54
STA. 309+00 TO STA. 314+50	550	1100	140 LT	550 RT	1100	140 LT	550 RT					7	7	110	37
STA. 314+50 TO STA. 335+25	2075	4034		4150	4034		4150					26	26	404	135
STA. 335+25 TO STA. 337+40	215							430		430	287				
STA. 337+40 TO STA. 366+00	2860	5658		5720	5658		5720					36	36	566	189
STA. 366+00 TO STA. 373+50	750	1500	190 RT	750 LT	1500	190 RT	750 LT					9	9	150	50
STA. 373+50 TO STA. 374+52	102	204	30		204	30						1	1	21	7
STA. 374+52 TO STA. 376+52	200							400	50		150				
STA. 376+52 TO STA. 388+50	1198	2340	300 LT	1198 RT	2340	300 LT	1198 RT					15	15	234	78
STA. 388+50 TO STA. 402+00	1350	2700		2700	2700		2700					17	17	270	90
STA. 402+00 TO STA. 413+25	1125	2193	280 RT	1125 LT	2193	280 RT	1125 LT					14	14	221	74
STA. 413+25 TO STA. 471+00	5775	11366	1450		11366	1450						72	72	1145	387
STA. 471+00 TO STA. 473+15	215	430	60 LT	215 RT	430	60 LT	215 RT					3	3	43	15
SUB-TOTAL		71989	7310	23403	71989	7310	23403	830	50	430					
TOTAL	37065		102702			102702			1310		437	458	458	7216	2416

MAINLINE RESURFACING SCHEDULE				
LOCATION	HMA SURFACE REMOVAL, 2 1/4"	BIT. MATERIALS (PRIME COAT)	HMA SURFACE COURSE MIX C, N90	LEVELING BINDER
	SQ. YD.	POUND	TON	TON
STA. 102+50 TO STA. 208+65.51	28308	19109	2378	1189
STA. 208+65.51 TO STA. 211+56.45	776	524	66	33
STA. 211+56.45 TO STA. 312+02	26788	18083	2251	1126
STA. 312+02 TO STA. 330+02	4848	3273	408	204
STA. 330+02 TO STA. 335+25	1347	910	114	57
STA. 337+40 TO STA. 374+22	9819	6629	825	413
STA. 374+22 TO STA. 473+15	25688	17340	2158	1079
SUB-TOTAL	97574	65868	8200	4101
TOTAL (FROM TEMP. RAMP SCHEDULE)		169		
TOTAL (FROM SHOULDER SCHEDULE)	25786	11768		
TOTAL	123360	77805	8200	4101

SHOULDER SCHEDULE					
LOCATION	HOT-MIX ASPHALT SHOULDERS, TON	HOT-MIX ASPHALT REMOVAL 2 1/4"	BIT. MATERIALS (PRIME COAT)	AGGREGATE WEDGE SHOULDER TYPE B	HMA SURFACE REMOVAL -1 1/2"
	TON	SQ. YD.	POUND	TON	SQ. YD.
STA. 102+50 TO STA. 208+65.51 RT.	441	3500	1575	187	
STA. 102+50 TO STA. 208+65.51 LT.	444	3520	1584	188	
STA. 209+70 TO STA. 211+56.45 RT.	16		85		187
STA. 209+90 TO STA. 211+56.45 LT.	14		76		167
STA. 211+56.45 TO STA. 312+02 RT.	417	3308	1489	177	
STA. 211+56.45 TO STA. 312+02 LT.	416	3295	1483	176	
STA. 312+02 TO STA. 330+20 RT.	74	583	263	32	
STA. 312+02 TO STA. 330+20 LT.	199	1574	709	32	
STA. 330+20 TO STA. 335+25 RT.	46	361	163		
STA. 330+20 TO STA. 335+25 LT.	57	449	202		
STA. 337+40 TO STA. 374+22 RT.	157	1242	559	59	
STA. 337+40 TO STA. 374+22 LT.	178	1406	633	58	
STA. 376+82 TO STA. 473+15 RT.	414	3279	1476	165	
STA. 376+82 TO STA. 473+15 LT.	412	3269	1471	165	
TOTAL	3285	25786	11768	1239	354

TEMP. RAMP / BUTT JOINT SCHEDULE												
	WIDTH		LENGTH	BIT. MATERIAL PRIME COAT	INCIDENTAL HMA SURFACING	TEMPORARY RAMP	HMA SURFACE REMOVAL BUTT JOINT					
	FEET							FEET	POUND	TON	SQ. YD.	SQ. YD.
	A	B										
STA. 102+50 TO STA. 102+55						14						
STA. 103+56 RT. METCALF ROAD	60	50	3.0	9	3	11	19					
STA. 156+17 LT. KELLER ROAD	60	52	3.0	9	3	13	19					
STA. 156+17 RT. DUIS ROAD	58	49	3.0	8	2	14	18					
STA. 209+24.5 RT. OMEGA ROAD	110	104	3.0	16	5	32	36					
STA. 209+27.5 LT. IUKA ROAD	110	102	3.0	16	5	30	36					
STA. 246+08 LT. NEFF ROAD	44	39	3.0	7	2	10	14					
STA. 262+58 LT. LANDMARK ROAD	60	53	3.0	9	3	14	19					
STA. 262+58 RT. LANDMARK ROAD	64	56	3.0	9	3	15	20					
STA. 288+78 RT. EAST ROBINSON LANE	60	52	3.0	9	3	14	19					
STA. 288+98 LT. EAST ROBINSON LANE	58	52	3.0	8	2	15	18					
STA. 314+80.5 LT. SKILLET FORK ROAD	48	43	3.0	7	2	14	15					
STA. 314+80.5 RT. SKILLET FORK ROAD	70	62	3.0	10	3	17	20					
STA. 335+20 TO STA. 335+25	24					14						
STA. 337+40 TO STA. 337+45	24					14						
STA. 343+47 LT. KIRBY ROAD	62	53	3.0	9	3	13	19					
STA. 374+17 TO STA. 374+22	24					14						
STA. 376+82 TO STA. 376+87	24					14						
STA. 382+42 LT. SULLENS ROAD	56	51	3.0	8	2	14	18					
STA. 413+06 LT. KASNELL ROAD	58	51	3.0	8	2	14	18					
STA. 426+21 RT. WAGGONER ROAD	64	56	3.0	9	3	15	20					
STA. 439+23 LT. EAST FOSTER ROAD	62	54	3.0	9	3	14	19					
STA. 465+82 RT. EAST UNDERPASS ROAD	60	54	3.0	9	3	15	19					
STA. 473+10 TO STA. 473+15	24					14						
TOTAL				169	52	368	366					

FILE NAME =	USER NAME =	DESIGNED -	REVISED -
		CHECKED -	REVISED -
PLOT SCALE =	DRAWN -	REVISED -	REVISED -
PLOT DATE =	CHECKED -	REVISED -	REVISED -



Allen Henderson & Associates, Inc.
Civil and Structural Engineers Springfield, IL
62703 Phone: (217)544-8033 IL Design Firm
No. 184-001907

QUANTITY SCHEDULES	
SHEET NO. 3 OF 4 SHEETS	

F.A.P. RTE.	SECTION	COUNTY	TOTAL SHEETS	SHEET NO.
327A	(12,13,14)RS-1	MARION	14	11
CONTRACT NO. 76H07				
ILLINOIS FED. AID PROJECT				

PAVEMENT PATCHING, CLASS D, 13 INCH						
LOCATION	LENGTH		WIDTH			
STATION	RT/LT	FT	FT	TYPE II	TYPE III	TYPE IV
123+57	LT	10.00	12.00	13.3		
124+25	LT	6.00	12.00	8.0		
127+58	RT	20.00	6.00	13.3		
128+53	LT	80.00	6.00			53.3
130+17	LT	80.00	6.00			53.3
136+56	RT	20.00	12.00			26.7
137+82	LT	300.00	6.00			200.0
140+67	LT	10.00	12.00	13.3		
143+47	LT	300.00	6.00			200.0
145+95	LT	15.00	12.00		20.0	
149+23	LT	6.00	12.00	8.0		
149+23	RT	6.00	12.00	8.0		
149+76	LT	30.00	6.00		20.0	
150+76	RT	200.00	6.00			133.3
150+92	LT	9.00	12.00	12.0		
153+45	LT	60.00	6.00			40.0
155+93	LT	30.00	6.00		20.0	
157+25	LT	6.00	12.00	8.0		
157+41	LT	6.00	12.00	8.0		
157+89	LT	6.00	12.00	8.0		
157+89	RT	6.00	10.00	6.7		
158+47	RT	20.00	6.00	13.3		
159+74	RT	6.00	12.00	8.0		
159+74	LT	6.00	12.00	8.0		
162+43	LT	20.00	6.00	13.3		
163+22	RT	15.00	6.00	10.0		
178+11	RT	6.00	12.00	8.0		
178+11	LT	6.00	12.00	8.0		
179+27	LT	6.00	12.00	8.0		
182+23	RT	6.00	12.00	8.0		
182+23	LT	6.00	12.00	8.0		
184+66	LT	6.00	12.00	8.0		
192+37	LT	12.00	12.00		16.0	
192+37	RT	12.00	12.00		16.0	
198+81	RT	24.00	12.00			32.0
204+09	RT	24.00	12.00			32.0
205+94	LT	6.00	12.00	8.0		
208+89	RT	30.00	6.00		20.0	
214+81	RT	6.00	12.00	8.0		
215+12	LT	16.00	12.00		21.3	
215+60	LT	15.00	16.00			26.7
230+49	RT	6.00	12.00	8.0		
231+33	LT	120.00	6.00			80.0
234+61	RT	100.00	6.00			66.7
250+13	LT	8.00	12.00	10.7		
250+13	RT	8.00	12.00	10.7		
SUB-TOTAL (1)				252.60	133.30	944.00

PAVEMENT PATCHING, CLASS D, 13 INCH						
LOCATION	LENGTH		WIDTH			
STATION	RT/LT	FT	FT	TYPE II	TYPE III	TYPE IV
257+73	LT	20.00	6.00	13.3		
259+84	LT	26.00	6.00		17.3	
272+69	LT	12.00	12.00		16.0	
281+86	LT	6.00	12.00	8.0		
282+23	RT	15.00	6.00	10.0		
282+76	LT	6.00	12.00	8.0		
304+35	LT	6.00	12.00	8.0		
311+48	LT	12.00	6.00	8.0		
360+16	RT	160.00	6.00			106.7
365+23	RT	80.00	6.00			53.3
383+92	LT	20.00	6.00	13.3		
385+93	LT	20.00	6.00	13.3		
396+81	LT	20.00	6.00	13.3		
400+19	LT	6.00	12.00	8.0		
411+91	LT	20.00	6.00	13.3		
412+70	LT	20.00	6.00	13.3		
414+02	LT	60.00	6.00			40.0
416+66	LT	40.00	6.00			26.7
418+51	LT	30.00	6.00		20.0	
420+04	LT	20.00	12.00			26.7
421+10	LT	300.00	6.00			200.0
428+28	LT	10.00	12.00	13.3		
436+62	LT	30.00	6.00		20.0	
447+81	LT	30.00	6.00		20.0	
464+07	LT	20.00	6.00	13.3		
471+31	RT	10.00	12.00	13.3		
SUB-TOTAL				169.70	93.30	453.40
SUB-TOTAL (1)				252.60	133.30	944.00
ANTICIPATED FAILURES (15%)				63.30	34.00	209.60
TOTAL				485.6	260.6	1607.0
ROUNDING				486	261	1607

FILE NAME =	USER NAME =	DESIGNED -	REVISD -
		CHECKED -	REVISD -
	PLOT SCALE =	DRAWN -	REVISD -
	PLOT DATE	CHECKED -	REVISD -

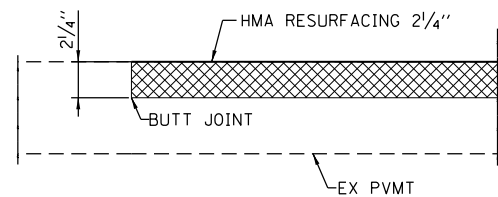


Allen Henderson & Associates, Inc.
 Civil and Structural Engineers Springfield, IL
 62703 Phone: (217)544-8033 IL Design Firm
 No. 184-001907

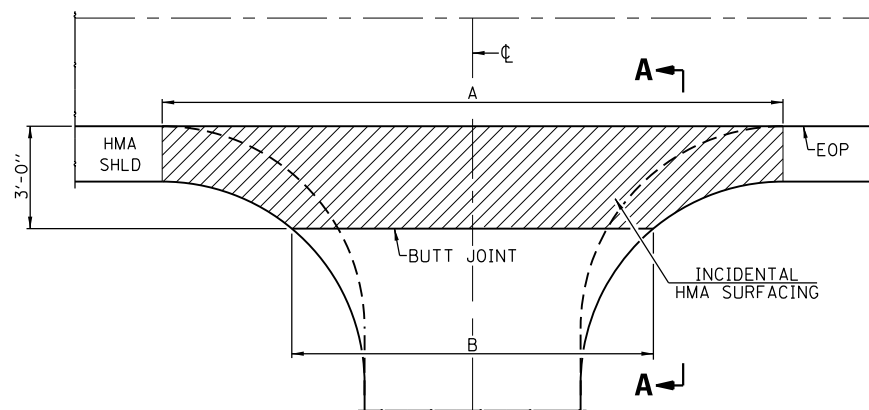
QUANTITY SCHEDULES

SHEET NO. 4 OF 4 SHEETS

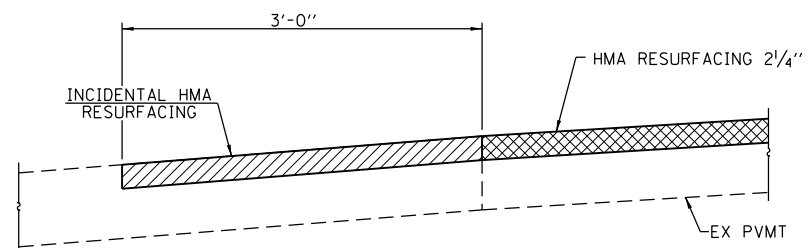
F.A.P. RTE.	SECTION	COUNTY	TOTAL SHEETS	SHEET NO.
327A	(12,13,14)RS-1	MARION	14	12
CONTRACT NO. 76H07			ILLINOIS FED. AID PROJECT	



BUTT JOINT DETAIL



SIDEROAD & COMMERCIAL ENTRANCE DETAIL



SECTION A-A
(AT SIDE ROAD LOCATIONS)

- INDICATES HOT MIX ASPHALT SURFACE REMOVAL-BUTT JOINT
- INDICATES HOT MIX ASPHALT SURFACE REMOVAL 2 1/4"

SIDE ROAD	STATION
METCALF RD.	103+56 LT.
KELLER RD.	156+17 LT.
DUIS RD.	156+17 RT.
OMEGA RD.	209+27.46 LT.
IUKA RD.	209+27.46 RT.
NEFF RD.	246+08 LT.
LANDMARK RD.	262+58 LT. & RT.
2050 E	288+78 RT.
SKILLET FORK RD.	313+80.5 RT.
KIRBY RD.	343+47 LT.
SULLENS RD.	382+42 LT.
KASNELL RD.	413+06 LT.
WAGGONER RD.	426+21 RT.
FOSTER RD.	439+23 LT.
UNDERPASS RD.	465+82 RT.

USER NAME = *USER*	DESIGNED - ___	REVISED - ___
	DRAWN - ___	REVISED - ___
PLOT SCALE = *SCALE*	CHECKED - ___	REVISED - ___
PLOT DATE = *DATE*	DATE - ___	REVISED - ___

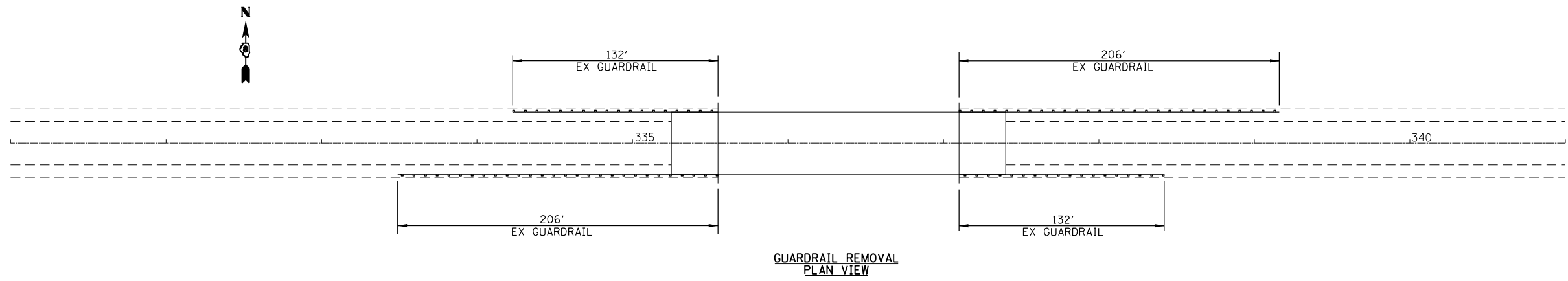


Allen Henderson & Associates, Inc.
Civil and Structural Engineers Springfield, IL
62703 Phone: (217)544-8033 IL Design Firm
No. 184-001907

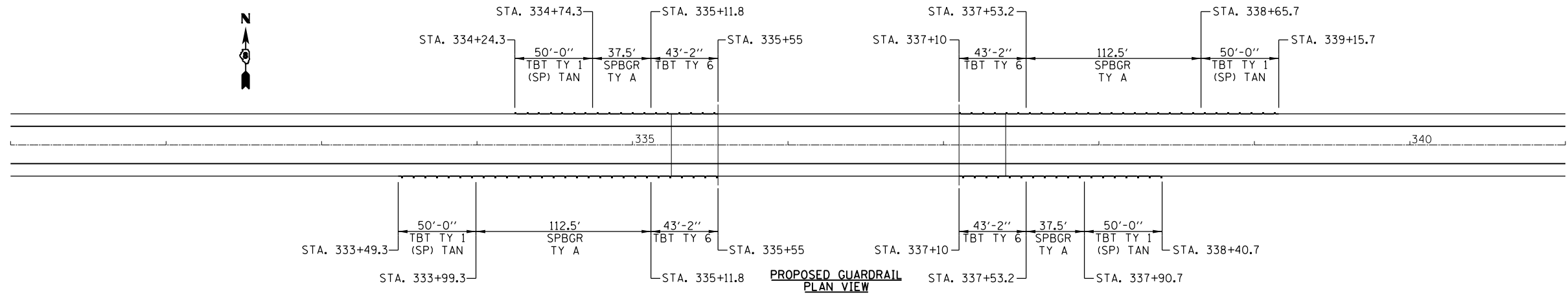
ENTRANCE & TAPER DETAILS

SCALE: NONE SHEET NO. 1 OF 1 SHEETS

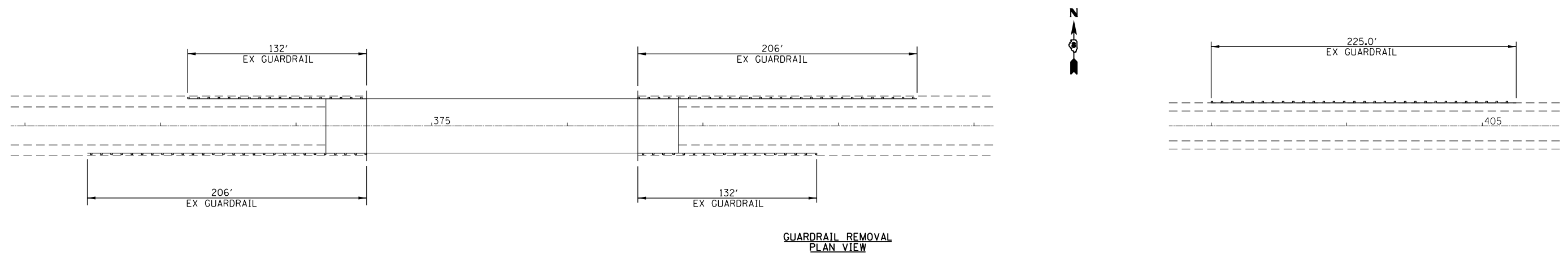
F.A.P. RTE.	SECTION	COUNTY	TOTAL SHEETS	SHEET NO.
327A	(12,13,14)RS-1	MARION	14	13
CONTRACT NO. 76H07				
<small>FED. ROAD DIST. NO. - ILLINOIS FED. AID PROJECT</small>				



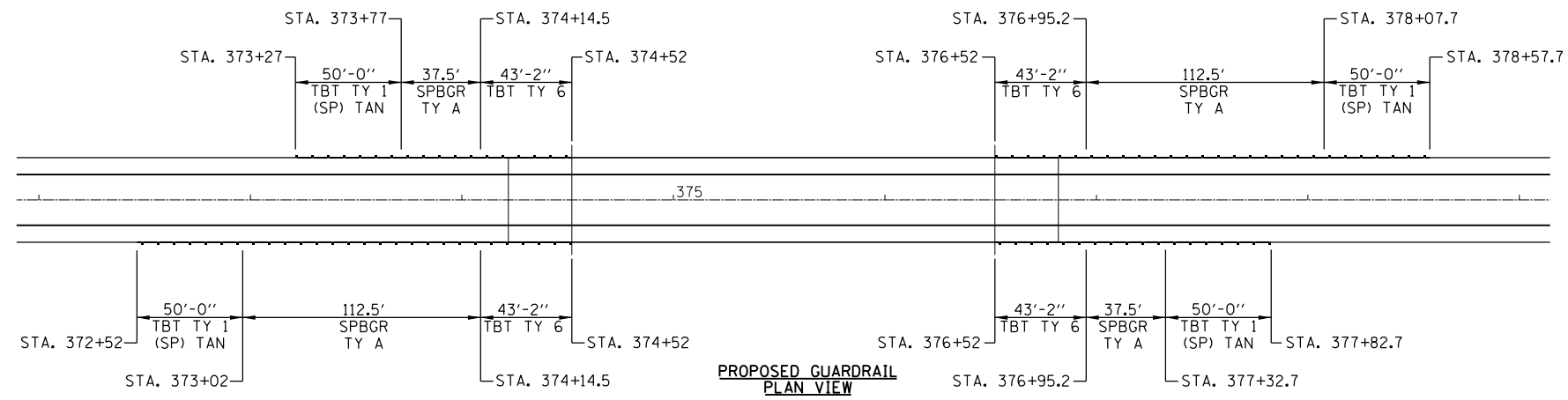
GUARDRAIL REMOVAL
PLAN VIEW



PROPOSED GUARDRAIL
PLAN VIEW




GUARDRAIL REMOVAL
PLAN VIEW



PROPOSED GUARDRAIL
PLAN VIEW

FILE NAME =	USER NAME = *USER*	DESIGNED -	REVISED -
FILEL		DRAWN -	REVISED -
	PLOT SCALE = *SCALE*	CHECKED -	REVISED -
	PLOT DATE = *DATE*	DATE -	REVISED -


Allen Henderson & Associates, Inc.
 Civil and Structural Engineers Springfield, IL
 62703 Phone: (217)544-8033 IL Design Firm
 No. 184-001907

GUARDRAIL DETAILS	
SCALE: NONE	SHEET NO. 1 OF 1 SHEETS
STA. _____	TO STA. _____

F.A.P. RTE.	SECTION	COUNTY	TOTAL SHEETS	SHEET NO.
327A	(12,13,14)RS-1	MARION	14	14
CONTRACT NO. 76H07				
FED. ROAD DIST. NO. - ILLINOIS FED. AID PROJECT				