

STATE OF ILLINOIS  
DEPARTMENT OF TRANSPORTATION  
DIVISION OF HIGHWAYS

**PROPOSED  
HIGHWAY PLANS**

FAS ROUTE 836 (E MAIN/OAKDALE BLACKTOP)  
SECTION 10-1RS-2

SMART RESURFACING  
WASHINGTON COUNTY

C-98-053-15

F.A.S. RTE.	SECTION	COUNTY	TOTAL SHEETS	SHEET NO.
836	10-1RS-2	WASHINGTON	9	1
		ILLINOIS	CONTRACT NO. 76J03	

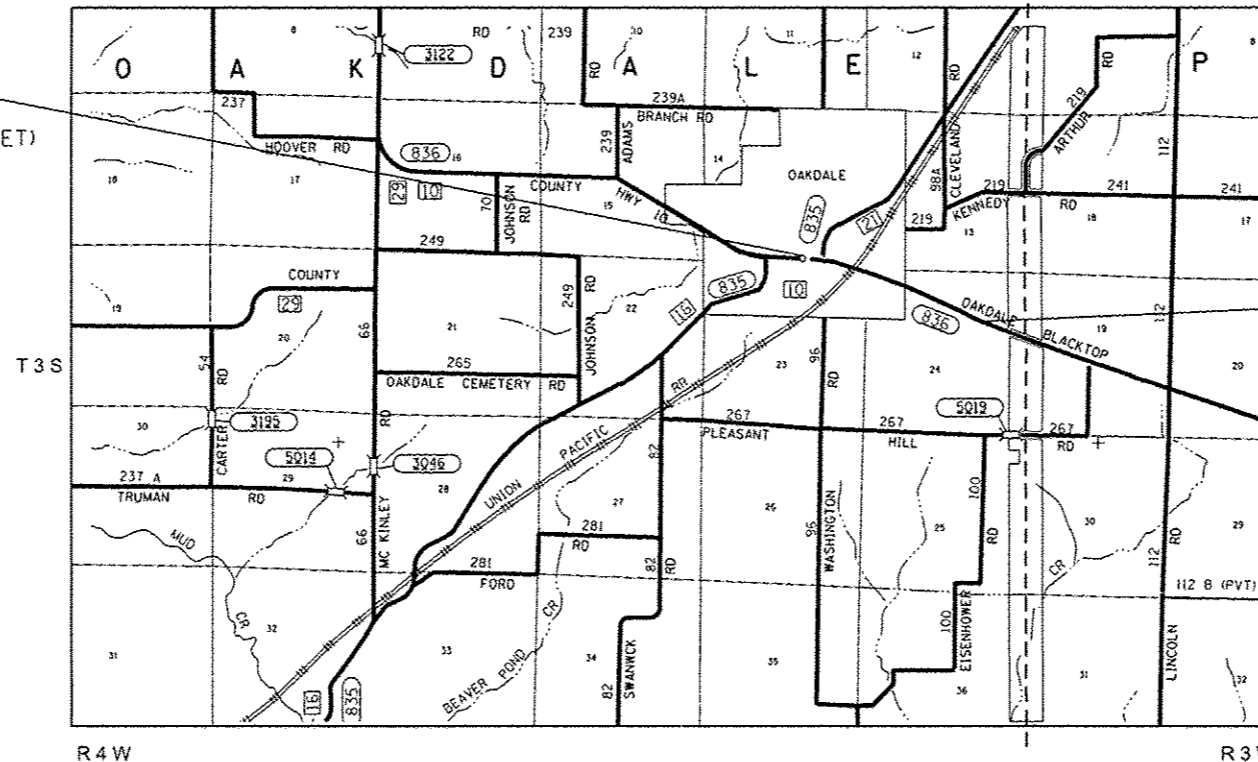
FOR INDEX OF SHEETS, SEE SHEET NO. 2

HIGHWAY CLASSIFICATION

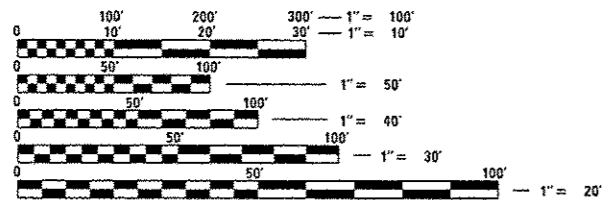
FAS 836 - E Main St/Oakdale Blacktop Rd  
Functional Class: Major Collector  
ADT: 1475  
MU: 3.3% SU: 3.7%  
Posted Speed: 55 mph  
30 mph (In Town)



BEGIN PROJECT  
STA. 100+00  
( ROW MONUMENT WEST OF WEIGH STREET)  
LATITUDE: 38.2616  
LONGITUDE: -89.5161



END PROJECT  
STA. 170+22  
(0.5 Mile WEST OF PLEASANT HILL RD)  
LATITUDE: 38.2505  
LONGITUDE: -89.4660



FULL SIZE PLANS HAVE BEEN PREPARED USING STANDARD ENGINEERING SCALES. REDUCED SIZED PLANS WILL NOT CONFORM TO STANDARD SCALES. IN MAKING MEASUREMENTS ON REDUCED PLANS, THE ABOVE SCALES MAY BE USED.

J.U.L.I.E.  
JOINT UTILITY LOCATION INFORMATION FOR EXCAVATION  
1-800-892-0123  
OR 811

LOCATION MAP  
NOT TO SCALE  
OAKDALE TOWNSHIP

GROSS LENGTH = 7022.4 FT. = 1.33 MILE  
NET LENGTH = 7022.4 FT. = 1.33 MILE

PROJECT ENGINEER: MICHAEL PRITCHETT (618) 346-3180  
DESIGNER: ARNOLD DOSSEH-ADJANON (618) 346-3206

CONTRACT NO. 76J03

STATE OF ILLINOIS  
DEPARTMENT OF TRANSPORTATION  
DIVISION OF HIGHWAYS

SUBMITTED Sept 30, 15  
Jeffrey L. K...  
DEPUTY DIRECTOR OF HIGHWAYS, REGION 5 ENGINEER

Dec 4, 15  
John D. Baranzelli, P.E.  
ENGINEER OF DESIGN AND ENVIRONMENT

Dec 4, 15  
Omer Osman, P.E.  
DIRECTOR OF HIGHWAYS, CHIEF ENGINEER

PRINTED BY THE AUTHORITY  
OF THE STATE OF ILLINOIS

**INDEX OF SHEETS**

- 1 COVER SHEET
- 2 GENERAL NOTES, INDEX OF SHEETS & HIGHWAY STANDARDS
- 3 SUMMARY OF QUANTITIES
- 4-5 TYPICAL SECTIONS
- 6-7 SCHEDULE OF QUANTITIES
- 8 LOCATION MAP
- 9 DETAIL SHEET

**GENERAL NOTES**

1. ILLINOIS STATE LAW REQUIRES A 48-HOUR NOTICE TO BE GIVEN TO ALL UTILITIES WITHIN THE PROJECT AREA BEFORE DIGGING. FIELD MARKING OF FACILITIES MAY BE OBTAINED BY CONTACTING J.U.L.I.E. OR FOR NON -MEMBERS, THE UTILITY COMPANY DIRECTLY. AGENCIES KNOWN TO HAVE FACILITIES WITHIN THE PROJECT AREA ARE AS FOLLOWS:

•AMEREN ILLINOIS - GAS & ELECTRIC	AERIAL, BURIED
•CLEARWAVE COMMUNICATIONS - COMMUNICATIONS	BURIED
•EGYPTIAN TELEPHONE COOP. ASSN. - COMMUNICATIONS	AERIAL, BURIED
•EXXONMOBIL PIPELINE COMPANY - PIPELINE	BURIED
•TRI-COUNTY ELECTRIC COOPERATIVE, INC. - ELECTRIC	AERIAL, BURIED
•WASHINGTON COUNTY WATER CO. - WATER	BURIED

MEMBERS OF J.U.L.I.E. (800) 892-0123 OR 811 ARE INDICATED BY \*. NON - J.U.L.I.E. MEMBERS MUST BE NOTIFIED INDIVIDUALLY.

2. THE CONTRACTOR AND THE ENGINEER SHALL BE AWARE THAT NO SURVEY WAS PERFORMED FOR THIS PROJECT. THE STATIONING, TOPOGRAPHY, AND QUANTITIES SHOWN IN THE PLANS WERE CREATED USING MICROFILM AND FIELD MEASUREMENTS. ALL SHALL BE ASSUMED APPROXIMATE. THE CONTRACTOR SHALL VERIFY ALL DIMENSIONS AND CONDITIONS IN THE FIELD PRIOR TO CONSTRUCTION AND ORDERING MATERIALS.

3. IT SHALL BE THE CONTRACTOR'S RESPONSIBILITY TO ENSURE THAT ADJACENT PAVEMENT IS NOT DAMAGED DURING ANY CONSTRUCTION OPERATION.

4. ADDITIONAL "ROAD CONSTRUCTION AHEAD" SIGNS SHALL BE PLACED AT ALL INTERSECTING SIDE ROADS WITHIN THE LIMITS OF THE PROJECT. ADDITIONAL SIGNS SHALL BE INCIDENTAL TO THE COST BID FOR TRAFFIC CONTROL AND PROTECTION. ALL TRAFFIC CONTROL SIGNS SHALL BE 48" x 48" AND FLUORESCENT ORANGE.

5. NO OVERNIGHT LANE CLOSURES WILL BE ALLOWED.

6. SIDE ENTRANCES SHALL BE KEPT OPEN TO TRAFFIC AT ALL TIMES.

7. FLAGGERS SHALL BE PRESENT DURING ALL CLOSURE HOURS, INCLUDING LUNCH PERIODS, AND NO ADDITIONAL COMPENSATION WILL BE ALLOWED.

8. THE THICKNESS OF THE BITUMINOUS MIXTURE SHOWN ON THE PLANS IS THE NOMINAL THICKNESS. DEVIATIONS FROM THE NOMINAL THICKNESS WILL BE PERMITTED WHEN SUCH DEVIATIONS OCCUR DUE TO IRREGULARITIES IN THE EXISTING SURFACE OR BASE ON WHICH THE BITUMINOUS MIXTURE IS PLACED.

**GENERAL NOTES (CONT.)**

- 9. THE PAVEMENT MARKING SHOWN IN THE SCHEDULE IS APPROXIMATE. THE LOCATION OF THE PROPOSED MARKINGS SHALL MATCH EXISTING LOCATIONS, EXCEPT THE RAIL ROAD CROSSING AND NO PASSING ZONE STRIPING SHALL BE ELIMINATED.
- 10. SHORT TERM AND TEMPORARY PAVEMENT MARKING REMOVAL FROM FINAL SURFACE SHALL BE PAID FOR AS "WORK ZONE PAVEMENT MARKING REMOVAL".
- 11. ANY SAW CUTTING REQUIRED FOR REMOVAL SHALL BE INCLUDED IN THE COST OF THE ITEM INVOLVED. NO ADDITIONAL COMPENSATION WILL BE ALLOWED.
- 12. ALL AREAS DISTURBED FOR ANY REASON SHALL BE SEEDED AS DIRECTED BY THE ENGINEER. ALL AREAS DISTURBED BY THE CONTRACTOR OUTSIDE THE PROPOSED CONSTRUCTION LIMITS SHALL BE SEEDED AT THE CONTRACTOR'S EXPENSE.
- 13. THE QUALITY CONTROL FOR PERFORMANCE ITEMS AND QUANTITIES ARE AS FOLLOWS: HOT-MIX ASPHALT SURFACE COURSE, MIX "C", N70 1507 TONS ( 2 SUB-LOTS)

**MIXTURE REQUIREMENTS**

ROUTE	FAS 836
SECTION	10-1RS-2
COUNTY	Washington
CONTRACT	76J03

DESCRIPTION:	SMART Resurfacing on E Main St, Oakdale Blacktop Rd from E of Welch St. In Oakdale to 0.5mi W of Pleasant Hill Rd.
--------------	--

ADT (Construction Yr):	1550
MU%:	3.3
SU%:	3.7
20 YR. ESAL'S:	0.35

MIXTURE USE	SURFACE	PATCHING	INCIDENTAL
AC/PG	PG 64-22	PG 64-22	PG 64-22
RAP % (MAX)	SEE SPECIAL PROVISION	SEE SPECIAL PROVISION	SEE SPECIAL PROVISION
DESIGN AIR VOIDS	4.0% @ Ndes=70	4.0% @ Ndes=30	4.0% @ Ndes=70
MIX COMPOSITION (Gradation)	IL 9.5	IL 9.5L	IL 9.5
FRICTION AGG	MIXTURE "C"	MIXTURE "C"	MIXTURE "C"
QUALITY MGMT PROGRAM	QCP	QC/OA	QC/OA

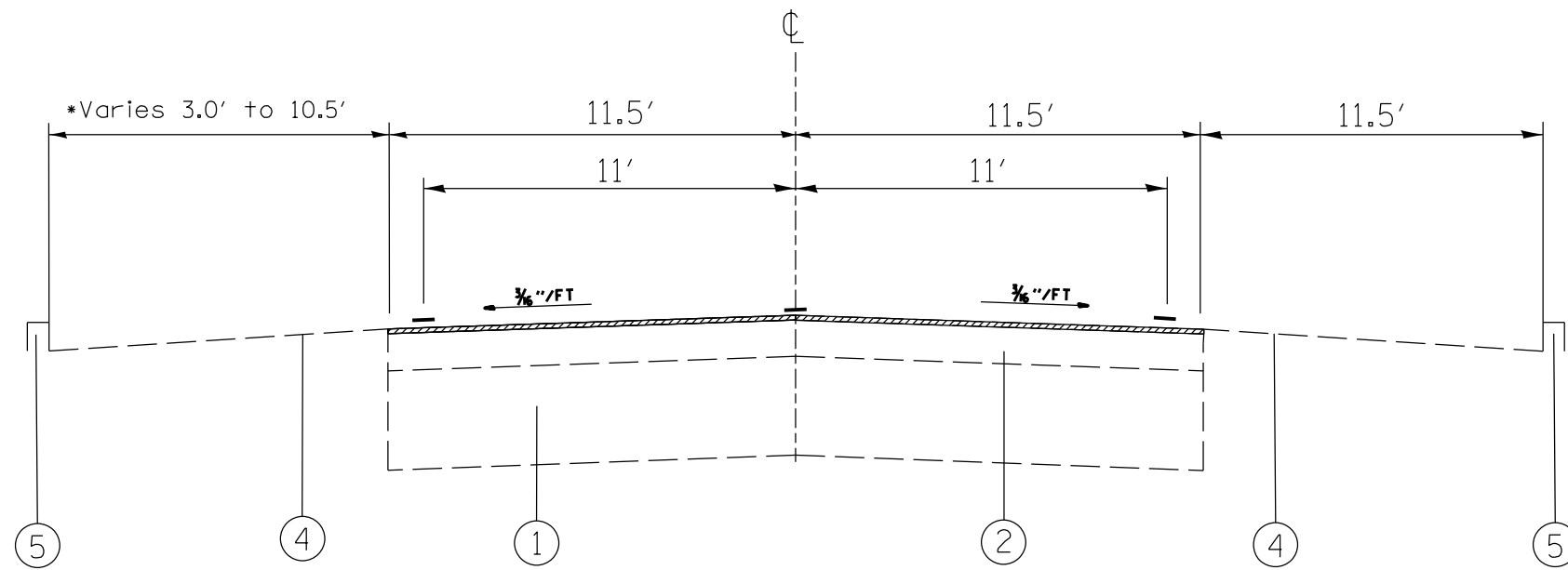
**HIGHWAY STANDARDS**

- 000001-06 STANDARD SYMBOLS, ABBREVIATIONS AND PATTERNS
- 001006 DECIMAL OF AN INCH AND OF A FOOT
- 442201-03 CLASS C and D PATCHES
- 701001-02 OFF-ROAD OPERATIONS, 2L, 2W, MORE THAN 15' (4.5 m) AWAY
- 701006-05 OFF-ROAD OPERATIONS, 2L, 2W, 15' (4.5 m) to 24" (600 mm) FROM PAVEMENT EDGE
- 701011-04 OFF-ROAD MOVING OPERATIONS, 2L, 2W, DAY ONLY
- 701201-04 LANE CLOSURE, 2L, 2W, DAY ONLY, FOR SPEED ≥ 45MPH
- 701301-04 LANE CLOSURE, 2L, 2W, SHORT TIME OPERATION
- 701306-03 LANE CLOSURE, 2L, 2W, SLOW MOVING OPERATIONS DAY ONLY, FOR SPEEDS ≥ 45MPH
- 701311-03 LANE CLOSURE, 2L, 2W MOVING OPERATIONS-DAY ONLY
- 701901-04 TRAFFIC CONTROL DEVICES
- 780001-05 TYPICAL PAVEMENT MARKINGS
- 781001-03 TYPICAL APPLICATIONS RAISED REFLECTIVE PAVEMENT MARKERS

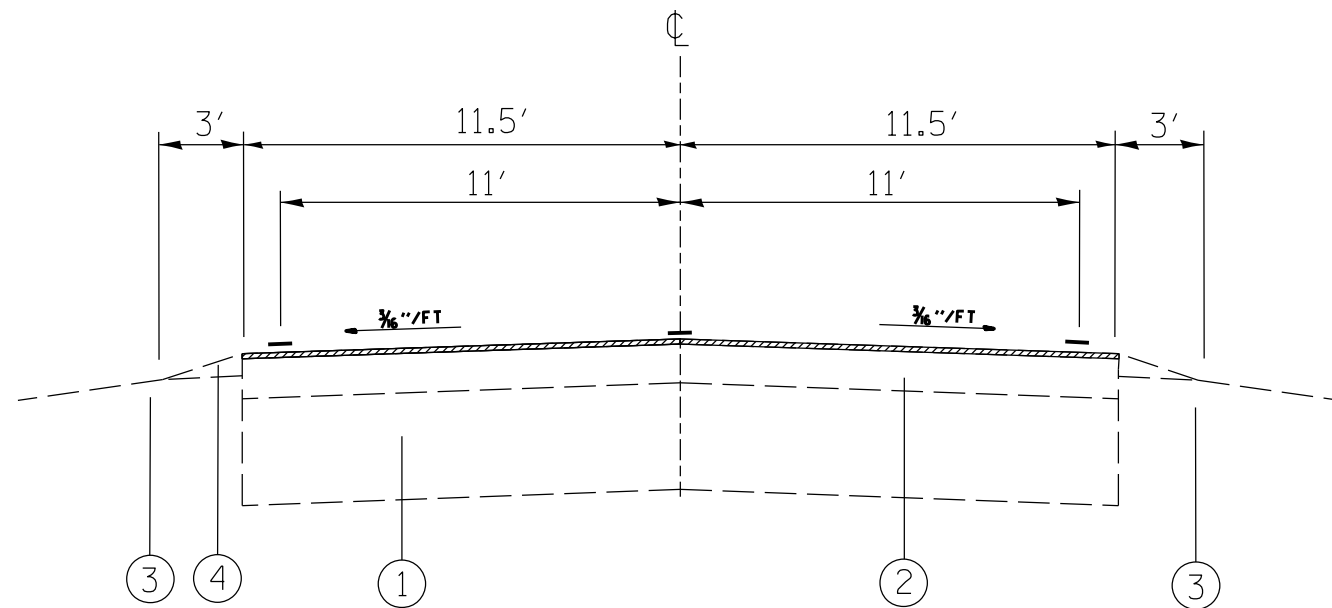
**COMMITMENTS**  
NONE

FILE NAME *	USER NAME * #USER#	DESIGNED -	REVISED -	STATE OF ILLINOIS DEPARTMENT OF TRANSPORTATION	GENERAL NOTES, INDEX OF SHEETS & HIGHWAY STANDARDS	F.A.S. RTE.	SECTION	COUNTY	TOTAL SHEETS	SHEET NO.	
#FILE#		DRAWN -	REVISED -			836	10-1RS-2	WASHINGTON	9	2	
	PLOT SCALE * #SCALE#	CHECKED -	REVISED -			CONTRACT NO. 76J03					
	PLOT DATE * #DATE#	DATE -	REVISED -			FED. ROAD DIST. NO. - ILLINOIS FED. AID PROJECT					
				SCALE: _____ SHEET NO. _____ OF _____ SHEETS STA. _____ TO STA. _____							





**EXISTING TYPICAL SECTION**  
 (STA. 100+00 TO STA. 103+80)  
 •10.5' FROM STA. 101+15 TO STA. 103+80



**EXISTING TYPICAL SECTION**  
 (STA. 103+80 TO STA. 170+22)

**LEGEND**

- ① EXISTING 6" CRUSHED STONE
- ② EXISTING 3-3/4" HOT-MIX ASPHALT
- ③ EXISTING EARTH SHOULDER
- ④ EXISTING AGGREGATE SHOULDER, TYPE B
- ⑤ EXISTING COMB CONC CURB AND GUTTER
- ⑥ PROPOSED BITUMINOUS MATERIALS (PRIME COAT)
- ⑦ PROPOSED HOT-MIX ASPHALT SURFACE COURSE, MIX "C", N70, 1-1/2"
- ⑧ PROPOSED AGGREGATE WEDGE SHOULDER, TYPE B
- ⑨ PROPOSED THERMOPLASTIC PAVEMENT MARKING - LINE 4"

HMA SURFACE REMOVAL, 1/2"

FILE NAME = *FILEL*	USER NAME = *USER*	DESIGNED - ___	REVISED - ___	<b>STATE OF ILLINOIS DEPARTMENT OF TRANSPORTATION</b>	<b>TYPICAL SECTIONS</b>	F.A.S RTE. 836	SECTION 10-IRS-2	COUNTY WASHINGTON	TOTAL SHEETS 9	SHEET NO. 4
	PLOT SCALE = *SCALE*	CHECKED - ___	REVISED - ___		SCALE: NTS	SHEET NO. 1 OF 2 SHEETS		STA. _____ TO STA. _____	FED. ROAD DIST. NO. ILLINOIS FED. AID PROJECT	
	PLOT DATE = *DATE*	DATE - _____	REVISED - ___			CONTRACT NO. 76J03				



PAVEMENT MARKING SCHEDULE										
STATION TO STATION			LENGTH	AMBER RAISED REFLECTIVE PAVEMENT MARKERS	SHORT TERM PAVEMENT MARKING	TEMPORARY PAVEMENT MARKING		WORK ZONE PAVEMENT MARKING REMOVAL	THERMOPLASTIC PAVEMENT MARKING	
						4" SKIP-DASH YELLOW	4" SOLID WHITE		4" SKIP-DASH YELLOW	4" SOLID WHITE
			FOOT	EACH	FOOT	FOOT	FOOT	SO FT	FOOT	FOOT
100+00	-	170+22	7022	88	1276	1756	13746	5380	1756	13746
SUBTOTAL				88	1276	1756	13746	5380	1756	13746
TOTAL				88	1276	15502		5380	15502	

RESURFACING SCHEDULE							
STATION	TO	STATION	LENGTH	HMA SURFACE COURSE, MIX C, N70, 1 1/2"	BITUMINOUS MATERIAL (PRIME COAT)	HMA SURFACE REMOVAL 1/2"	AGGREGATE WEDGE SHOULDER, TYPE B
			FOOT	TON	POUND	SO YD	TON
100+00	TO	170+22	7022	1507	8075	17945	520
TOTAL				1507	8075	17945	520

TEMPORAY RAMP SCHEDULE			
STATION	TO	STATION	TEMPORARY RAMP
			SO YD
100+00	TO	100+05	13
170+22	TO	170+17	13
TOTAL			26

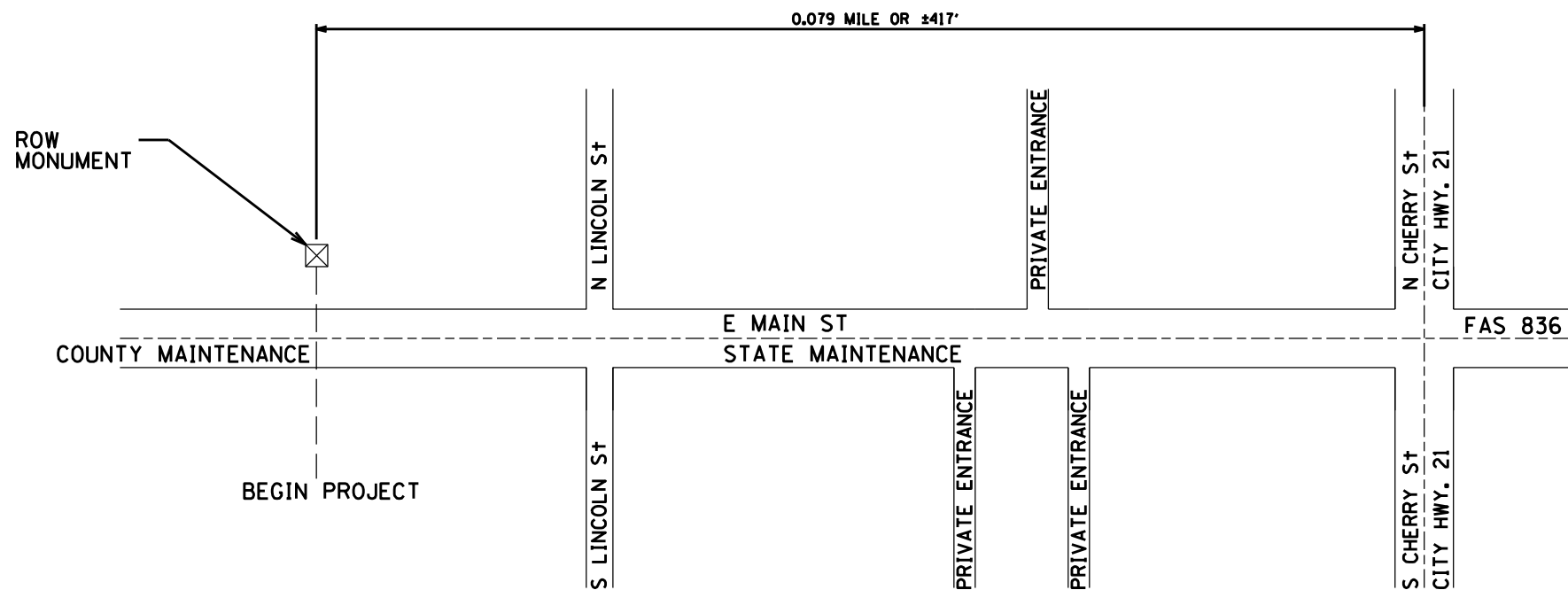
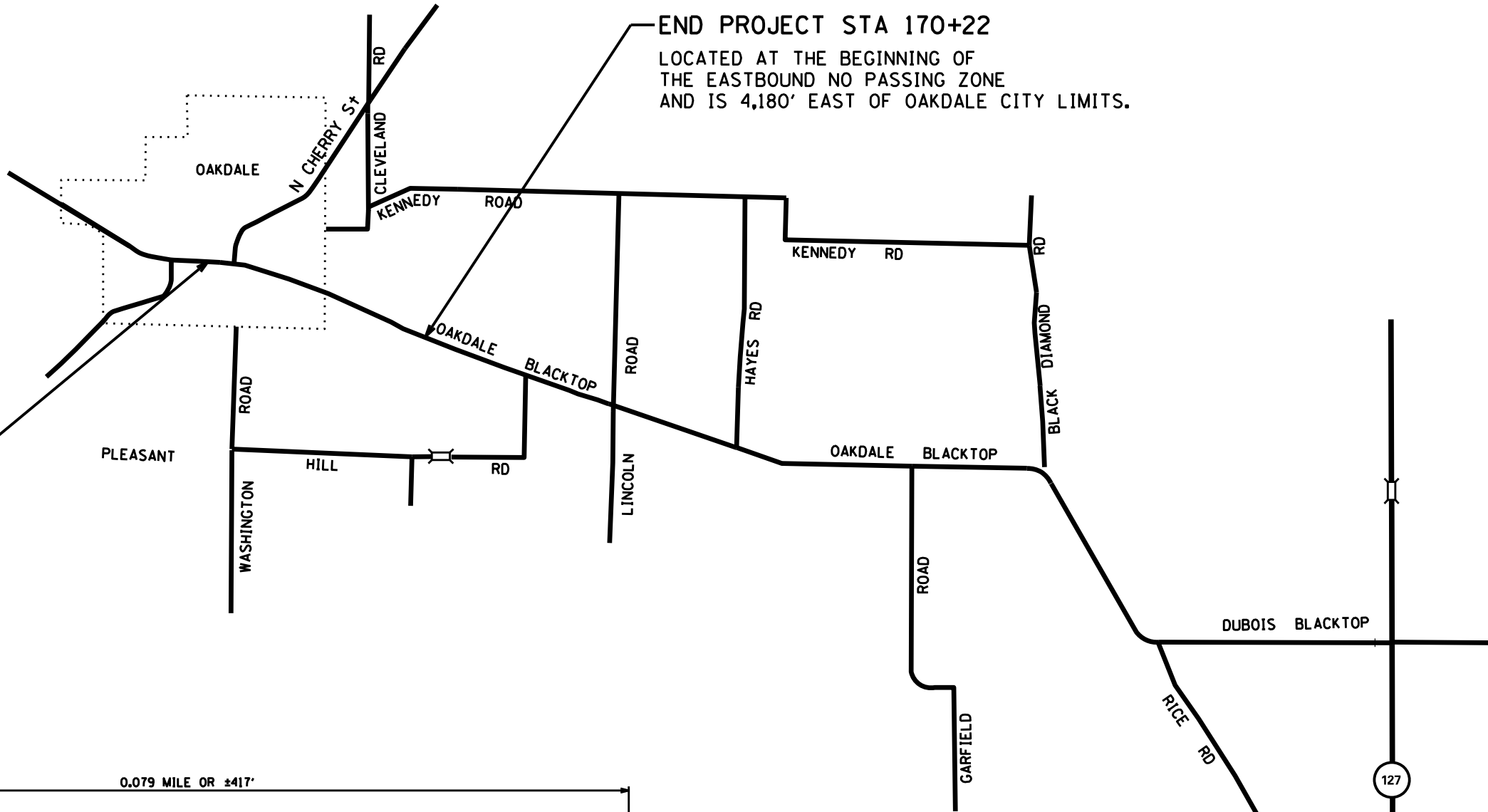
ENTRANCE AND SIDE ROAD SCHEDULE							
STATION	WIDTH	LENGTH	LT/RT	SIDE ROADS/ENTRANCES	HMA SURFACE REMOVAL- BUTT JOINT	BITUMINOUS MATERIALS (PRIME COAT)	INCIDENTAL HMA SURFACING
	FOOT	FOOT			SO YD	POUND	TON
101+60	36	5	LT	LINCOLN ST	20	9	1.1
101+60	34	5	RT	LINCOLN ST	19	9	1.1
102+80	19	5	RT	PRIVATE	11	5	0.6
103+30	20	5	RT	PRIVATE	11	5	0.6
104+20	144	10	LT	CHERRY ST	160	72	9.0
104+20	60	10	RT	CHERRY ST	67	30	3.7
105+17	70	10	LT	E OLD NASHVILLE RD	78	35	4.4
106+35	65	5	LT	COMMERCIAL	36	16	2.0
106+44	50	5	RT	SCHOOL	28	13	1.6
108+03	110	5	LT	COMMERCIAL	61	28	3.4
108+40	75	5	RT	SCHOOL	42	19	2.3
114+84	66	5	LT	COMMERCIAL	37	17	2.1
116+84	42	5	RT	PRIVATE	23	11	1.3
118+48	41	5	LT	PRIVATE	23	10	1.3
118+90	24	5	RT	PRIVATE	13	6	0.7
121+65	41	5	RT	COMMERCIAL	23	10	1.3
125+24	48	5	RT	COMMERCIAL	27	12	1.5
125+66	46	5	LT	PRIVATE	26	12	1.4
167+07	45	5	LT	PRIVATE	25	11	1.4
TOTAL:					728	328	41

CLASS D PATCHING SCHEDULE				
STATION	DIRECTION LT/RT	WIDTH	LENGTH	CLASS D PATCHES, 10"
		FOOT	FOOT	SO YD
113+82	LT	11.5	65	83.1
113+82	RT	11.5	65	83.1
SUBTOTAL				166
10% SUBTOTAL				16.6
TOTAL				183



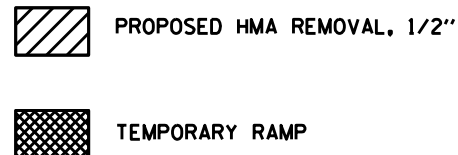
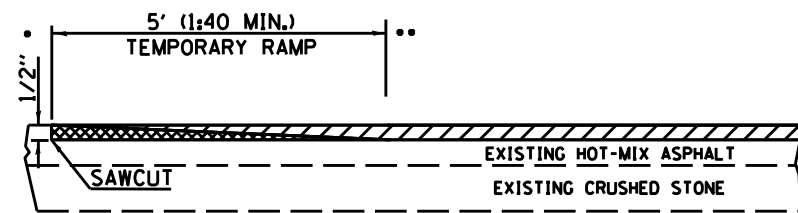
BEGIN PROJECT STA 100+00  
 LOCATED ±417' WEST OF  $\phi$  OF Cherry St.  
 (SEE DETAIL BELOW)

END PROJECT STA 170+22  
 LOCATED AT THE BEGINNING OF  
 THE EASTBOUND NO PASSING ZONE  
 AND IS 4,180' EAST OF OAKDALE CITY LIMITS.



FILE NAME = *FILEL*	USER NAME = *USER*	DESIGNED -	REVISED -	<b>STATE OF ILLINOIS DEPARTMENT OF TRANSPORTATION</b>	<b>LOCATION MAP</b>		F.A.S. RTE. 836	SECTION 10-1RS-2	COUNTY WASHINGTON	TOTAL SHEETS 9	SHEET NO. 8	
	PLOT SCALE = *SCALE*	CHECKED -	REVISED -		SCALE: NTS	SHEET NO. OF SHEETS	STA. TO STA.	CONTRACT NO. 76J03				
PLOT DATE = *DATE*	DATE -	REVISED -	REVISED -		FED. ROAD DIST. NO. ILLINOIS FED. AID PROJECT							

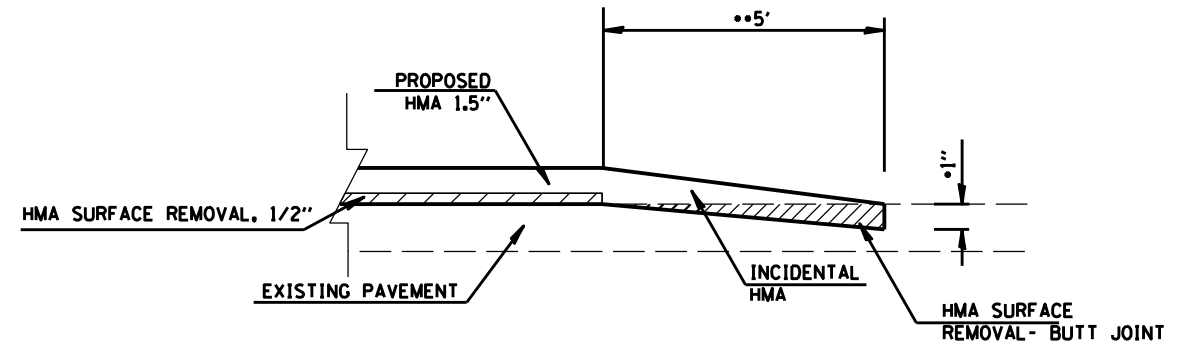




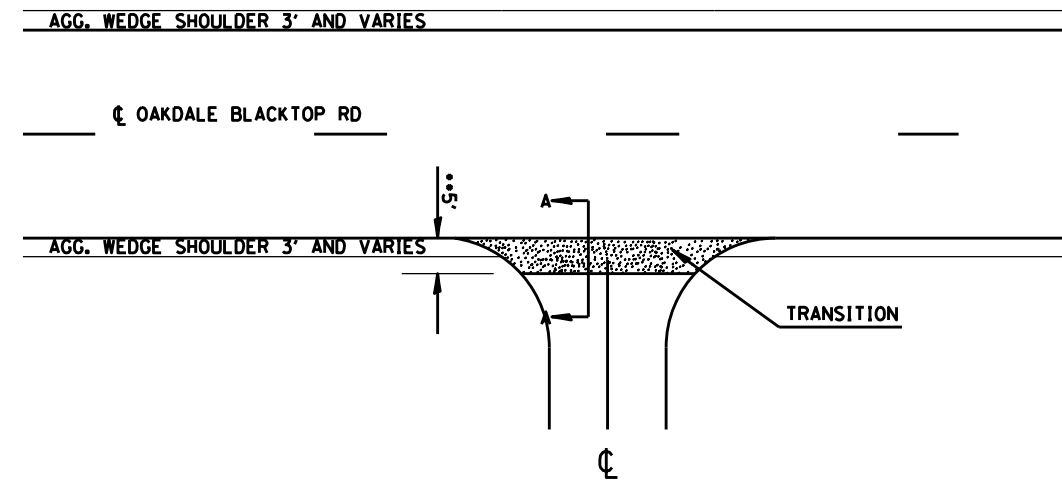
NOTES:  
ALL SAWCUTS SHALL BE INCLUDED IN THE  
COST OF HOT-MIX ASPHALT REMOVAL

TEMPORARY RAMP DETAIL FOR BEGINNING AND END OF PROJECT  
NOT TO SCALE

• TO ••  
STA. 100+00 TO STA. 100+05  
STA. 170+22 TO STA. 170+17



**TRANSITON DETAIL**  
(NOT TO SCALE)  
SECTION A-A



•EOP ELEVATION CHANGE	••TOTAL TRANSITION LENGTH
3/4"	3.5'
1"	5'
1-1/2"	7.5'
2"	10'
2-1/2"	12.5'
3"	15'
3-1/2"	17.5'
4"	20'
4-1/2"	22.5'
5"	25'
5-1/2"	27.5'
6"	30'

NOTE:  
WHERE THE HMA TRANSITION IS MATCHING  
INTO AN EXISTING HMA SIDE ROAD  
SURFACE, A MILLED BUTT JOINT SHALL  
BE CONSTRUCTED WITHIN THE LIMITS  
OF THE TOTAL TRANSITION LENGTH  
ON THE SIDE ROAD.

SEE ENTRANCE AND SIDE ROAD SCHEDULE FOR  
LOCATION AND DIMENSIONS.

**SIDE ROAD AND ENTRANCE TRANSITON DETAIL**  
(NOT TO SCALE)