

URBAN

URBAN

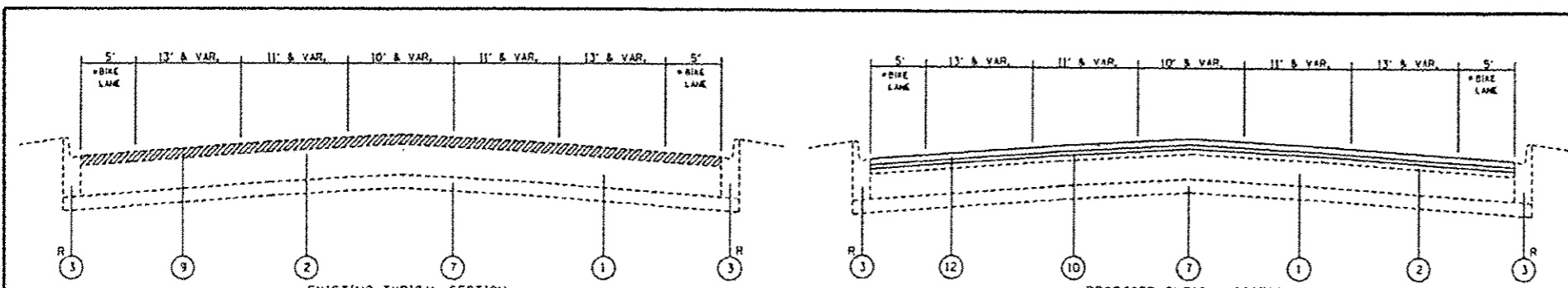
SUMMARY OF QUANTITIES					CONSTRUCTION TYPE CODE					SUMMARY OF QUANTITIES					CONSTRUCTION TYPE CODE				
CODE NO	ITEM	UNIT	TOTAL QUANTITIES	100% STATE						CODE NO	ITEM	UNIT	TOTAL QUANTITIES	100% STATE					
21101615	TOPSOIL FURNISH AND PLACE, 4"	SO YD	66	66						44201789	CLASS D PATCHES, TYPE II, 12 INCH	SO YD	169	169					
25200110	SOODING, SALT TOLERANT	SO YD	66	66						44201794	CLASS D PATCHES, TYPE III, 12 INCH	SO YD	207	207					
40600275	BITUMINOUS MATERIALS (PRIME COAT)	POUND	33229	33229						44201796	CLASS D PATCHES, TYPE IV, 12 INCH	SO YD	317	317					
40600400	MIXTURE FOR CRACKS, JOINTS, AND FLANGEWAYS	TON	80	80						60300105	FRAMES AND GRATES TO BE ADJUSTED	EACH	5	5					
40600827	POLYMERIZED LEVELING BINDER (MACHINE METHOD), IL-4, 75, N50	TON	2031	2031						60300305	FRAMES AND LIDS TO BE ADJUSTED	EACH	25	25					
40600982	HOT-MIX ASPHALT SURFACE REMOVAL - BUTT JOINT	SO YD	672	672						60406520	FRAMES AND LIDS, OPEN LID (CITY OF CHICAGO)	EACH	5	5					
40603565	POLYMERIZED HOT-MIX ASPHALT SURFACE COURSE, MIX "E", N70	TON	4825	4825						60406530	FRAMES AND LIDS, CLOSED LID (CITY OF CHICAGO)	EACH	5	5					
42001300	PROTECTIVE COAT	SO YD	136	136						67000400	ENGINEER'S FIELD OFFICE, TYPE A	CAL MO	3	3					
42400200	PORTLAND CEMENT CONCRETE SIDEWALK 5 INCH	SO FT	5334	5334						67100100	MOBILIZATION	LSUM	1	1					
42400800	DETECTABLE WARNINGS	SO FT	300	300						70102625	TRAFFIC CONTROL AND PROTECTION, STANDARD 701606	LSUM	1	1					
<del>44000153</del>	<del>HOT-MIX ASPHALT SURFACE REMOVAL, 1"</del>	<del>SO YD</del>	<del>5796</del>	<del>5796</del>						70102630	TRAFFIC CONTROL AND PROTECTION, STANDARD 701601	LSUM	1	1					
44000156	HOT-MIX ASPHALT SURFACE REMOVAL, 1 3/4"	SO YD	5796	5796						70102632	TRAFFIC CONTROL AND PROTECTION, STANDARD 701602	LSUM	1	1					
44000159	HOT-MIX ASPHALT SURFACE REMOVAL, 2 1/2"	SO YD	43431	43431						70102635	TRAFFIC CONTROL AND PROTECTION, STANDARD 701701	LSUM	1	1					
44000600	SIDEWALK REMOVAL	SO FT	5334	5334						70102640	TRAFFIC CONTROL AND PROTECTION, STANDARD 701801	LSUM	1	1					

REVISD 1-5-16

\* SPECIALTY ITEMS

FILE NAME	USER NAME STEEDPA	DESIGNED	REVISD	STATE OF ILLINOIS DEPARTMENT OF TRANSPORTATION		SUMMARY OF QUANTITIES FAP 347 (ROOSEVELT RD.)-PULASKI RD. TO WESTERN AVE.		F.A.P. RIE. 347	SECTION 2015-045RS	COUNTY COOK	TOTAL SHEETS 24	SHEET NO. 3	CONTRACT NO. 62B05
PLDT SCALE 100:0000 1/2 IN	PLDT DATE 02/28/2015	DRAWN	REVISD	SCALE:		SHEET NO. OF SHEETS STA. TO STA.		FED. ROAD DIST. NO. 1 ILLINOIS FED. AID PROJECT					



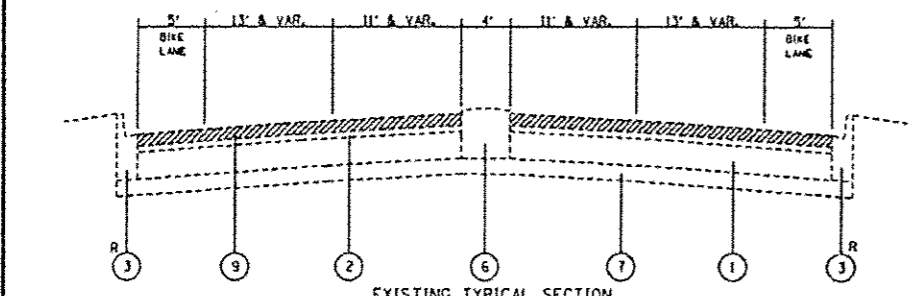


**EXISTING TYPICAL SECTION**  
 STA. 100+31 TO 101+77  
 STA. 124+78 TO 126+11  
 STA. 126+87 TO 127+87  
 STA. 137+87 TO 139+09  
 STA. 164+53 TO 165+99  
 STA. 166+75 TO 168+22  
 STA. 177+40 TO 179+25  
 STA. 180+14 TO 181+94  
 STA. 198+35 TO 199+56

**LEGEND:**  
 \*BIKE LANE  
 STA. 180+14 TO 181+94

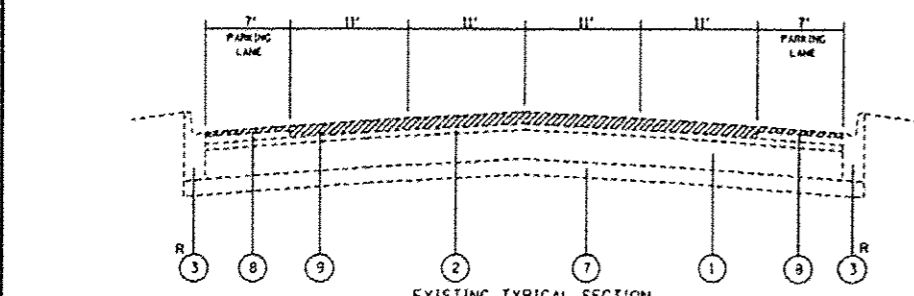
**PROPOSED TYPICAL SECTION**  
 STA. 100+31 TO 101+77  
 STA. 124+78 TO 126+11  
 STA. 126+87 TO 127+87  
 STA. 137+87 TO 139+09  
 STA. 164+53 TO 165+99  
 STA. 166+75 TO 168+22  
 STA. 177+40 TO 179+25  
 STA. 180+14 TO 181+94  
 STA. 198+35 TO 199+56

- LEGEND:**
- ① EXISTING P.C.C. PAVEMENT ±9"
  - ② EXISTING HOT-MIX ASPHALT SURFACE ±3" (AFTER MILLING)
  - ③ EXISTING COMBINATION OF CURB & GUTTER TYPE B-6.12
  - ④ EXISTING CORRUGATED MEDIAN
  - ⑤ EXISTING P.C.C. SIDEWALK
  - ⑥ EXISTING CORRUGATED MEDIAN
  - ⑦ EXISTING STABILIZED SUB-BASE
  - ⑧ PROPOSED HOT-MIX ASPHALT SURFACE REMOVAL, 1 3/4"
  - ⑨ PROPOSED HOT-MIX ASPHALT SURFACE REMOVAL, 2 1/2"
  - ⑩ PROPOSED POLYMERIZED LEVELING BINDER. (MACHINE METHOD). IL-4.75, N50, 3/4"
  - ⑪ PROPOSED POLYMERIZED HOT-MIX ASPHALT SURFACE COURSE, MIX "E", N70, 1 3/4"
- R CURB AND GUTTER REMOVAL AND REPLACEMENT (AS DIRECTED BY THE ENGINEER)



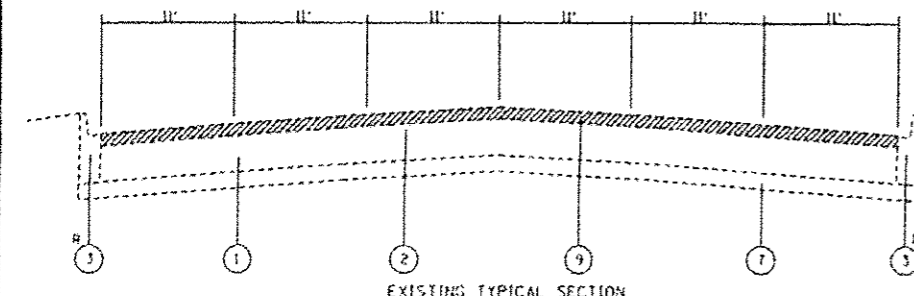
**EXISTING TYPICAL SECTION**  
 STA. 189+88 TO 190+49  
 STA. 196+38 TO 197+71

**PROPOSED TYPICAL SECTION**  
 STA. 189+88 TO 190+49  
 STA. 196+38 TO 197+71



**EXISTING TYPICAL SECTION**  
 STA. 101+77 TO 110+89  
 STA. 127+87 TO 137+87  
 STA. 160+90 TO 164+53  
 STA. 168+22 TO 177+40

**PROPOSED TYPICAL SECTION**  
 STA. 101+77 TO 110+89  
 STA. 127+87 TO 137+87  
 STA. 160+90 TO 164+53  
 STA. 168+22 TO 177+40



**EXISTING TYPICAL SECTION**  
 STA. 114+03 TO 114+96

**PROPOSED TYPICAL SECTION**  
 STA. 114+03 TO 114+96

**MIXTURE REQUIREMENTS**

MIXTURE TYPE	AIR VOIDS @ Ndes	OMP
<b>PATCHING</b>		
CLASS "D" PATCHES (HMA BINDER COURSE, IL-19MM)	4% @ 70 GYR.	OC / OA
<b>PAVEMENT RESURFACING</b>		
POLYMERIZED HOT-MIX ASPHALT SURFACE COURSE, MIX "E", N70 (IL 9.5MM) *	4% @ 70 GYR.	OC/P
POLYMERIZED LEVELING BINDER (MACHINE METHOD), IL-4.75, N50	3.5% @ 50 GYR.	OC/P
OMP DESIGNATION: QUALITY CONTROL FOR PERFORMANCE (OC/P) QUALITY CONTROL/ QUALITY ASSURANCE (OC/ OA) PAY FOR PERFORMANCE (PFP)		

**NOTES:**

THE UNIT WEIGHT USED TO CALCULATE ALL HOT-MIX ASPHALT QUANTITIES IS 112 LBS./SQ. YD./ IN.

THE "AC TYPE" FOR POLYMERIZED HMA MIXES SHALL BE "SBS/SBR PG 76 -22" AND FOR NON-POLYMERIZED HMA THE "AC TYPE" SHALL BE "PG 64 -22" UNLESS MODIFIED BY DISTRICT ONE SPECIAL PROVISIONS.

THE MILLING SHALL BE DONE PRIOR TO PATCHING

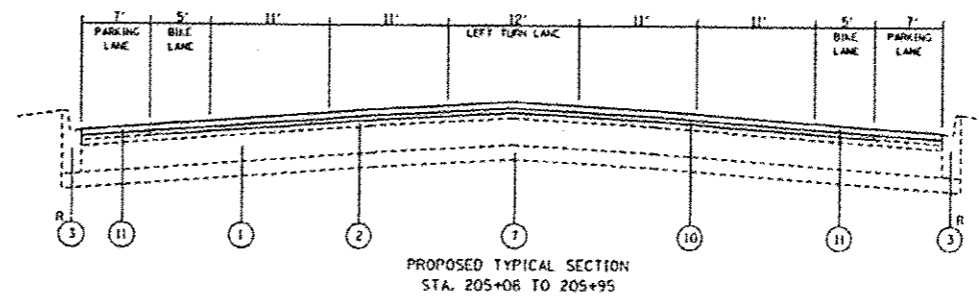
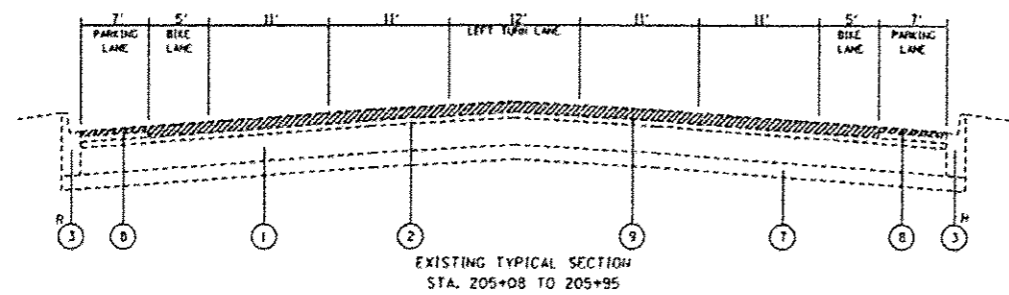
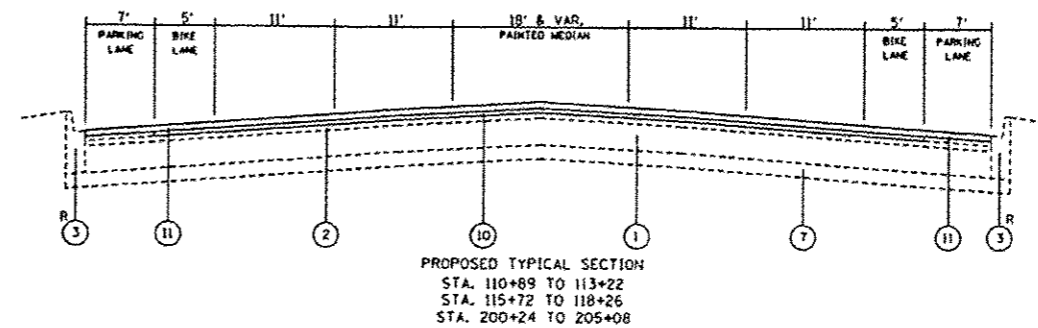
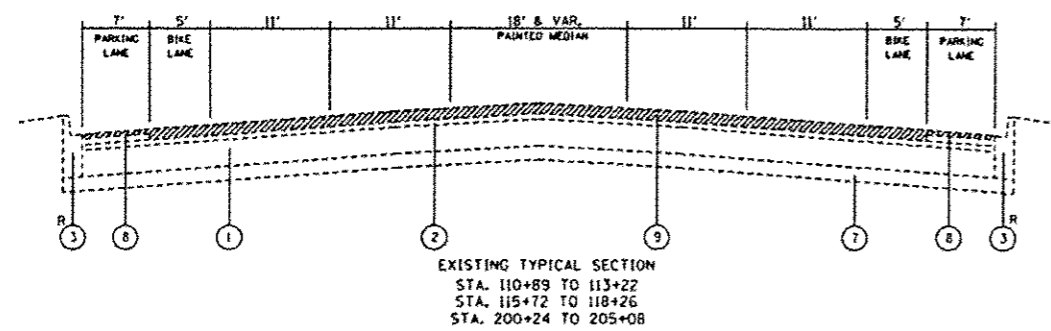
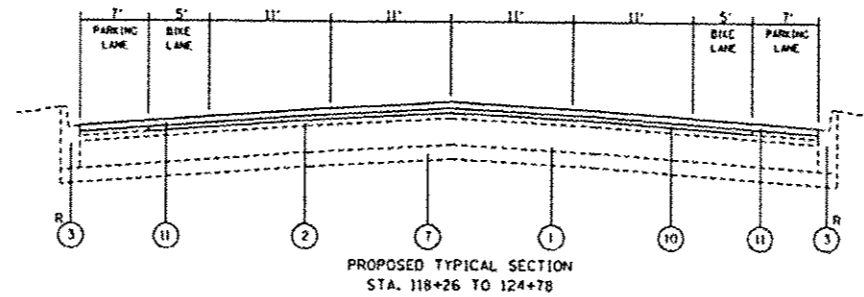
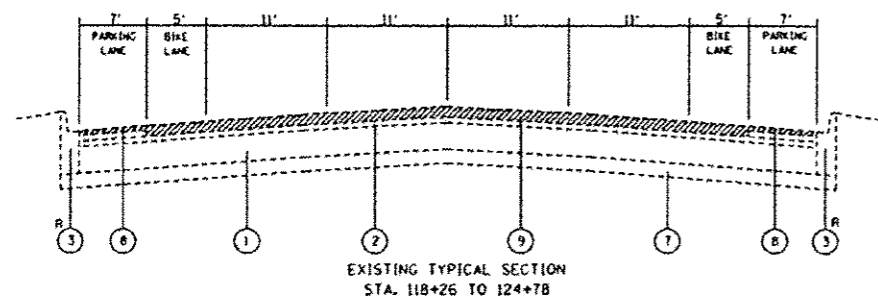
QUALITY MANAGEMENT PROGRAM (OMP) IDENTIFIES THE PARTICULAR QUALITY CONTROL SPECIFICATION THAT APPLIES TO THE HMA MIXTURE

FOR USE OF RECYCLED MATERIALS SEE SPECIAL PROVISIONS

\* THE DENSITY FOR PARKING LANE POLYMERIZED SURFACE COURSE MIX "E", N70 WILL BE ASSIGNED 100% PAY FACTOR, BE TESTED RANDOMLY AT THE FREQUENCY REQUIRED IN THE 'HMA - QUALITY CONTROL FOR PERFORMANCE' SPECIAL PROVISION, AND SHALL MEET MINIMUM OC/OA DENSITY REQUIREMENTS IN ACCORDANCE WITH ARTICLE 1030 OF THE STANDARD SPECIFICATIONS.

△ REVISED SHEET 1-5-16

FILE NAME	USER NAME	DESIGNED	REVISED	STATE OF ILLINOIS DEPARTMENT OF TRANSPORTATION		EXISTING AND PROPOSED TYPICAL SECTIONS FAP 347 (ROOSEVELT RD.)—PULASKI RD. TO WESTERN AVE.		F.A.P. RTEL	SECTION	COUNTY	TOTAL SHEETS	SHEET NO.
		DRAWN	REVISED					347	2015-045RS	COOK	24	5
		CHECKED	REVISED									
		DATE	REVISED									
						SCALE:	SHEET OF	SHEETS		STA.	TO STA.	
						ILLINOIS/STED. AND PROJ. REC.						



**LEGEND:**

- ① EXISTING P.C.C. PAVEMENT ±9"
  - ② EXISTING HOT-MIX ASPHALT SURFACE ±3" (AFTER MILLING)
  - ③ EXISTING COMBINATION OF CURB & GUTTER TYPE B-6.12
  - ④ EXISTING CORRUGATED MEDIAN
  - ⑤ EXISTING P.C.C. SIDEWALK
  - ⑥ EXISTING CORRUGATED MEDIAN
  - ⑦ EXISTING STABILIZED SUB-BASE
  - ⑧ PROPOSED HOT-MIX ASPHALT SURFACE REMOVAL, 1 3/4"
  - ⑨ PROPOSED HOT-MIX ASPHALT SURFACE REMOVAL, 2 1/2"
  - ⑩ PROPOSED POLYMERIZED LEVELING BINDER, (MACHINE METHOD), 1L-4.75, N50, 3/4"
  - ⑪ PROPOSED POLYMERIZED HOT-MIX ASPHALT SURFACE COURSE, MIX "E", N70, 1 3/4"
- R CURB AND GUTTER REMOVAL AND REPLACEMENT (AS DIRECTED BY THE ENGINEER)

⚠ REVISION SHEET 1-5-16

FILE NO. 10-111-1-1000	USER NAME: awood	DESIGNED: -	REVISED: -	STATE OF ILLINOIS DEPARTMENT OF TRANSPORTATION	EXISTING AND PROPOSED TYPICAL SECTIONS FAP 347 (ROOSEVELT RD.)—PULASKI RD. TO WESTERN AVE.	F.A.P. RTE. 347	SECTION 2015-045RS	COUNTY COOK	TOTAL SHEETS 24	SHEET NO. 5		
PROJECT: 10-111-1-1000	DATE: 1/4/2016	DRAWN: -	REVISED: -			SCALE: SHEET OF SHEETS STA. TO STA.	CONTRACT NO. 62B05	ILLINOIS FED. AID PROJECT				
PLAT SCALE: 1/8"=1'-0"		CHECKED: -	REVISED: -									
FILE DATE: 1/4/2016		DATE: 1/4/2016	REVISED: -									