

STATE OF ILLINOIS
DEPARTMENT OF TRANSPORTATION
DIVISION OF HIGHWAYS

**PROPOSED
HIGHWAY PLANS**

FAP ROUTE 327 (US 50, US 45 & IL 250)
SECTION D7 PATCHING 2016-3
PROPOSED HIGHWAY PLANS
PAVEMENT PATCHING
CLAY, RICHLAND & LAWRENCE COUNTY

C-97-085-15

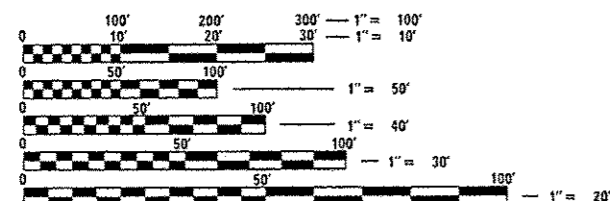
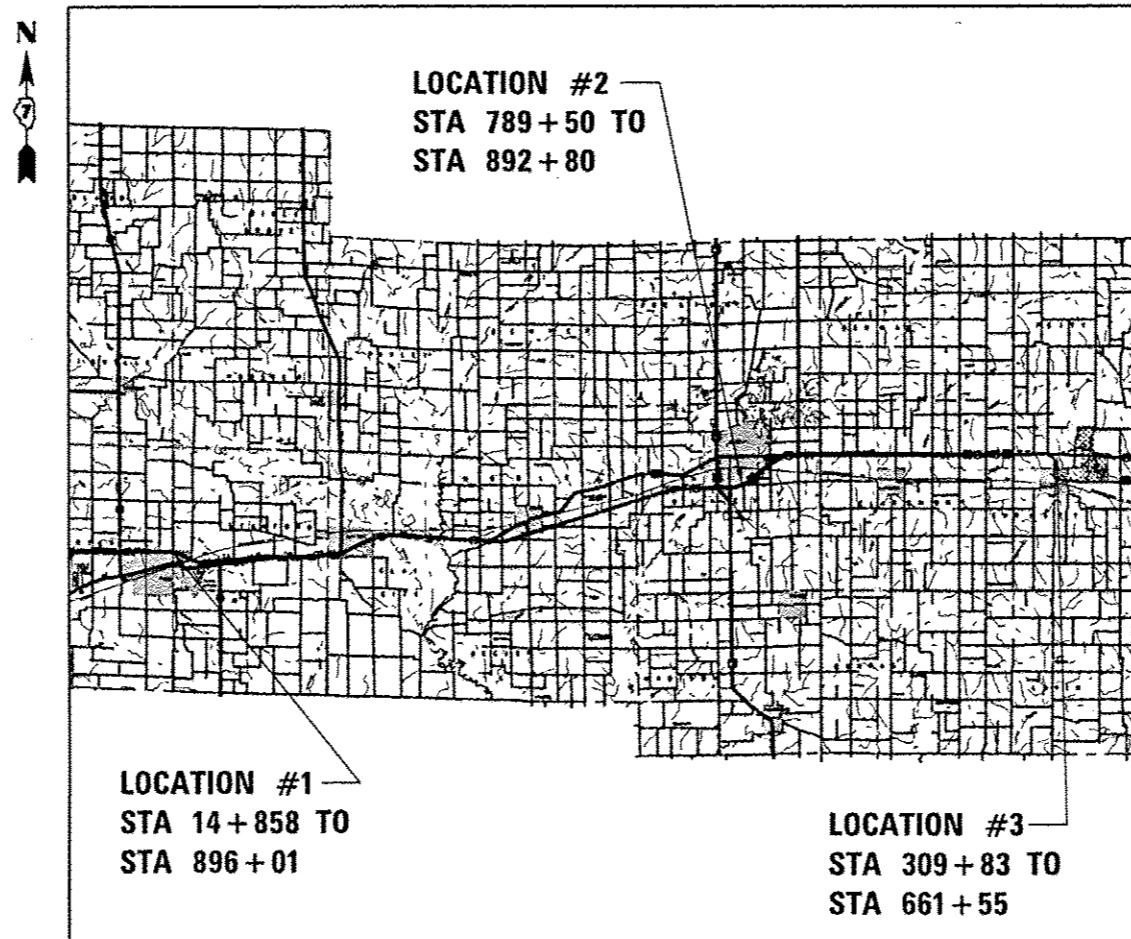
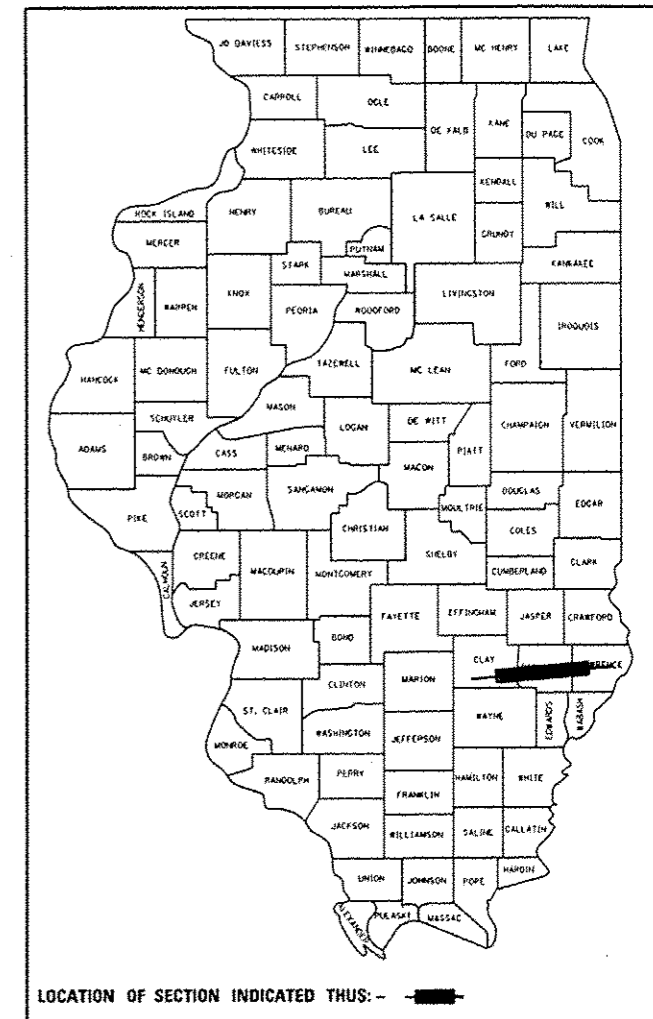
FOR INDEX OF SHEETS, SEE SHEET NO. 2

ADT (2013) = 4,800

F.A.P. RTE.	SECTION	COUNTY	TOTAL SHEETS	SHEET NO.
327	D7 PATCHING 2016-3	ILLINOIS	9	1
CONTRACT NO. 74731				

*CLAY, RICHLAND, LAWRENCE

D-97-037-15



FULL SIZE PLANS HAVE BEEN PREPARED USING STANDARD ENGINEERING SCALES. REDUCED SIZED PLANS WILL NOT CONFORM TO STANDARD SCALES. IN MAKING MEASUREMENTS ON REDUCED PLANS, THE ABOVE SCALES MAY BE USED.

J.U.L.I.E.
JOINT UTILITY LOCATION INFORMATION FOR EXCAVATION
1-800-892-0123
OR 811

PROJECT ENGINEER: MARK DAUGHERTY
PROJECT MANAGER: CHANDA TEASLEY

CONTRACT NO. 74731

GROSS LENGTH = 188,179.2 FT. = 35.64 MILE
NET LENGTH = 105,072 FT. = 19.9 MILE

STATE OF ILLINOIS
DEPARTMENT OF TRANSPORTATION
DIVISION OF HIGHWAYS

SUBMITTED October 30 2015
Roger Brubaker
DEPUTY DIRECTOR OF HIGHWAYS, REGION ENGINEER

Dec 4 2015
John D. Baranzelli P.E.
ENGINEER OF DESIGN AND ENVIRONMENT

Dec 4 2015
Omer Osman P.E.
DIRECTOR OF HIGHWAYS, CHIEF ENGINEER

**PRINTED BY THE AUTHORITY
OF THE STATE OF ILLINOIS**

GENERAL NOTES

THIS SECTION SHALL BE CONSTRUCTED IN ACCORDANCE WITH THE PLANS; THE "STANDARD SPECIFICATIONS FOR ROAD AND BRIDGE CONSTRUCTION" ADOPTED JANUARY 1, 2012; THE "SUPPLEMENTAL SPECIFICATIONS AND RECURRING SPECIAL PROVISIONS" INDICATED ON THE CHECK SHEET, AND "THE SPECIAL PROVISIONS" INCLUDED IN THIS PROPOSAL.

THE ACTUAL LOCATIONS OF PAVEMENT PATCHING AND FINAL QUANTITIES SHALL BE DETERMINED BY THE ENGINEER IN THE FIELD.

INDEX OF SHEETS

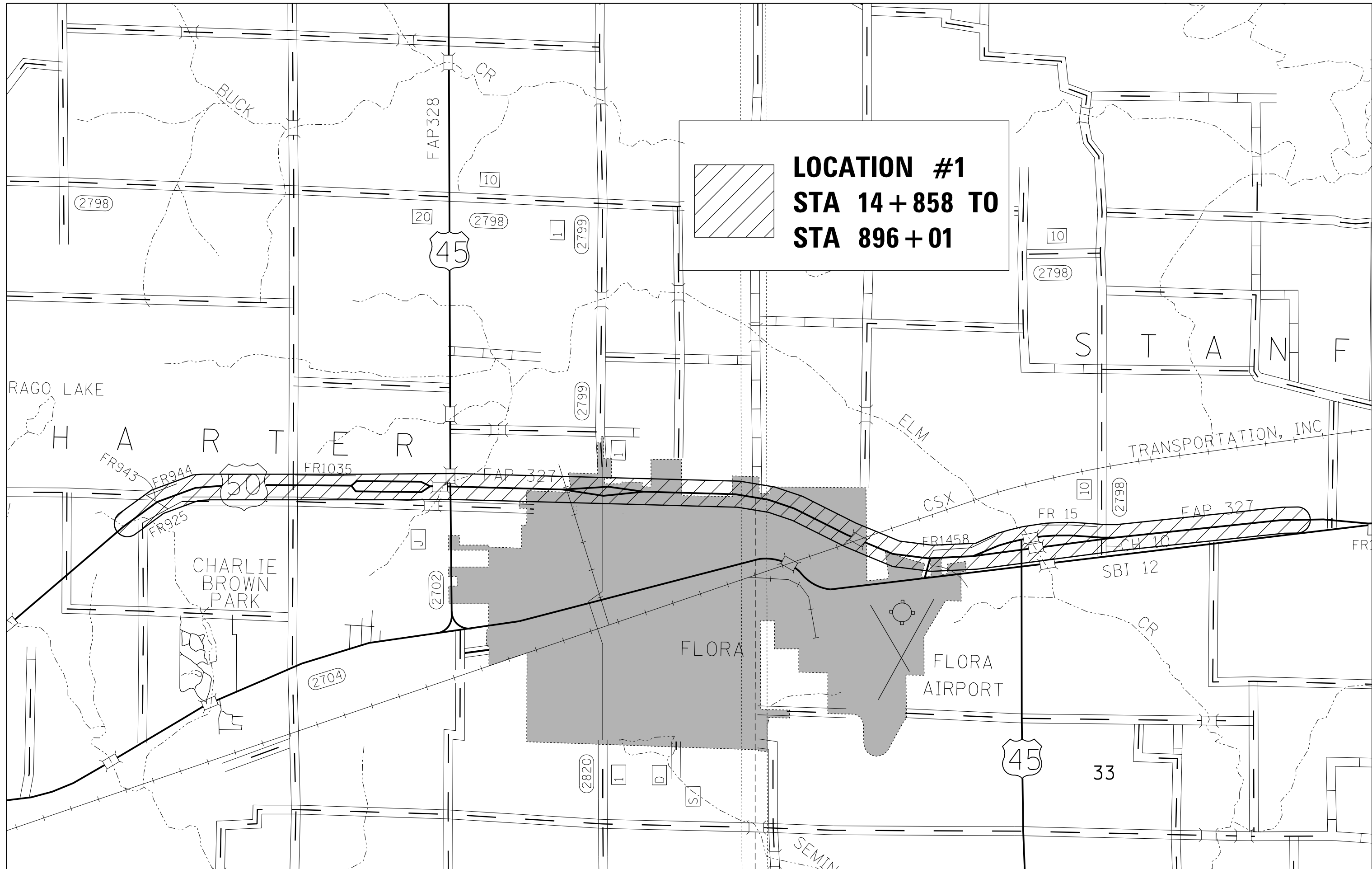
SHEET NO.	DESCRIPTION
1	COVER SHEET
2	INDEX OF SHEETS
3-5	LOCATION MAPS
6	SUMMARY OF QUANTITIES
7-9	SCHEDULES

THE FOLLOWING STANDARDS ARE A PART OF THESE PLANS AND ARE INCLUDED FOLLOWING SHEET NUMBER 5

STANDARD NO.	DESCRIPTION
000001-06	STANDARD SYMBOLS, ABBREVIATIONS AND PATTERNS
001001-D2	AREAS OF REINFORCEMENT BARS
001006	DECIMAL OF AN INCH AND OF A FOOT
420001-08	PAVEMENT JOINTS
420701-02	PAVEMENT FABRIC
442101-07	CLASS B PATCHES
701001-02	OFF-RD OPERATIONS, 2L, 2W, MORE THAN 15' (4.5 m) AWAY
701006-05	OFF-RD OPERATIONS, 2L, 2W, 15' (4.5 m) TO 24" (600 MM) FROM PAVEMENT EDGE
701201-04	LANE CLOSURE, 2L, 2W, DAY ONLY, FOR SPEEDS >= 45 MPH
701301-04	LANE CLOSURE, 2L, 2W, SHORT TIME OPERATIONS
701421-07	LANE CLOSURE, MULTILANE, DAY OPERATIONS ONLY FOR SPEEDS >= 45 MPH TO 55 MPH
701901-04	TRAFFIC CONTROL DEVICES

FILE NAME :	USER NAME : kstaffmk	DESIGNED -	REVISED -	STATE OF ILLINOIS DEPARTMENT OF TRANSPORTATION	GENERAL NOTES & INDEX OF SHEETS	F.A.P. RTE.	SECTION	COUNTY	TOTAL SHEETS	SHEET NO.
pm\1\1884EB\0INTEG\Illinois.gov\1\DOT\De	umencs\DOT Offices\District 7\Projects\74731\	CHECKED -	REVISED -			327	D7 PATCHING 2016-3		9	2
	PLOT SCALE = 1/2" = 10'	CHECKED -	REVISED -			*CLAY, RICHLAND, LAWRENCE		CONTRACT NO. 74731		
Default	PLOT DATE = 12/30/2015	DATE -	REVISED -			SCALE:	SHEET OF SHEETS	STA. TO STA.	ILLINOIS FED. AID PROJECT	

LOCATION #1
STA 14 + 858 TO
STA 896 + 01



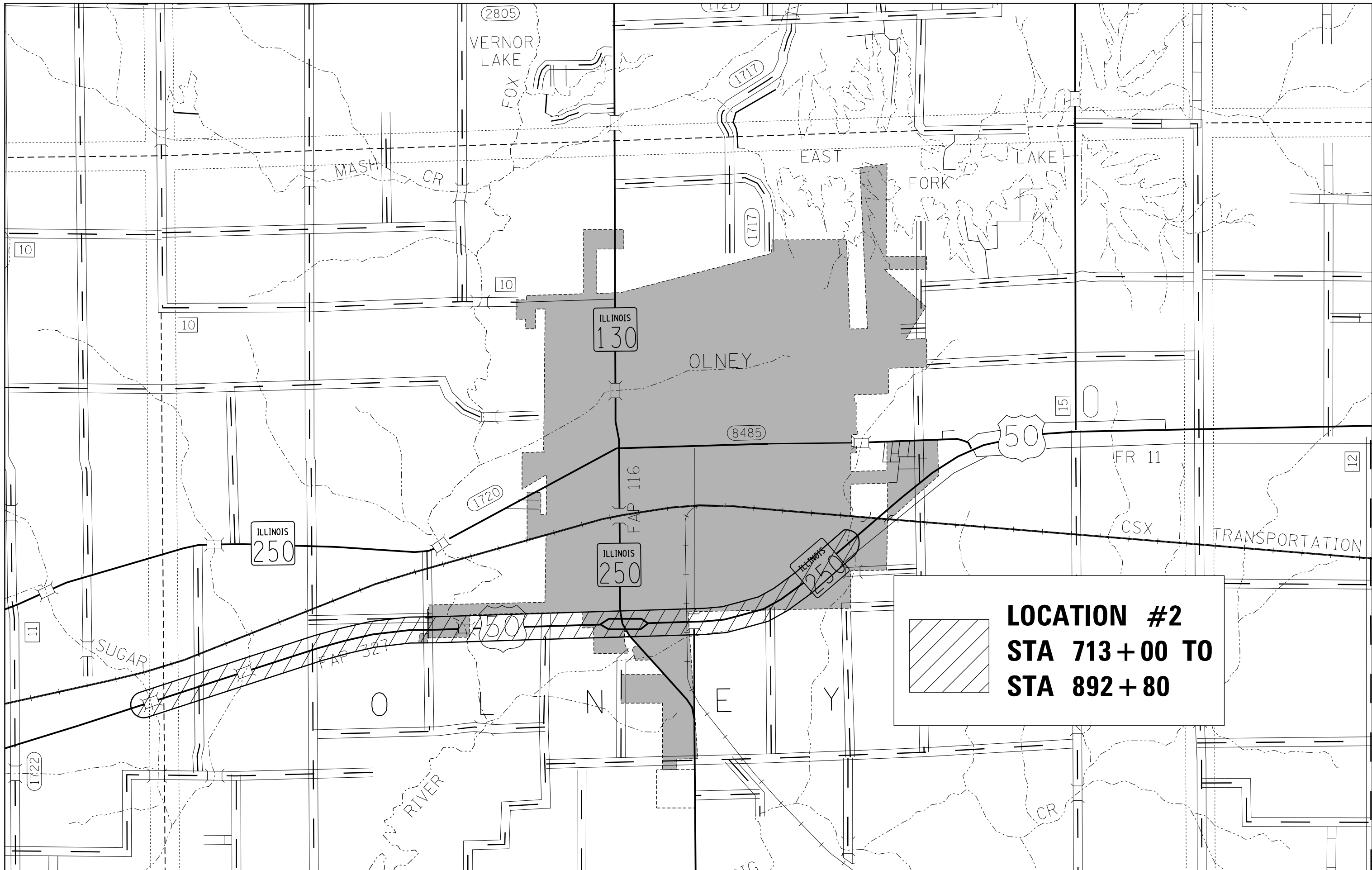
FILE NAME =	USER NAME = steffenk	DESIGNED -	REVISED -
p:\11084EBIDINTEG.illinois.gov\PIWIDOT\Documents\DOT Offices\District 7\Projects\74731\Drawings\CADsheets\0774731-shr-cover.dgn		DRAWN -	REVISED -
Default	PLOT SCALE = 100.0000' / in.	CHECKED -	REVISED -
	PLOT DATE = 10/30/2015	DATE -	REVISED -

STATE OF ILLINOIS
DEPARTMENT OF TRANSPORTATION

CLAY COUNTY LOCATION MAP

SCALE: SHEET OF SHEETS STA. TO STA.

F.A.P. RTE.	SECTION	COUNTY	TOTAL SHEETS	SHEET NO.
327	D7 PATCHING 2016-3		9	3
•CLAY, RICHLAND, LAWRENCE			CONTRACT NO. 74731	
ILLINOIS FED. AID PROJECT				



LOCATION #2
STA 713+00 TO
STA 892+80

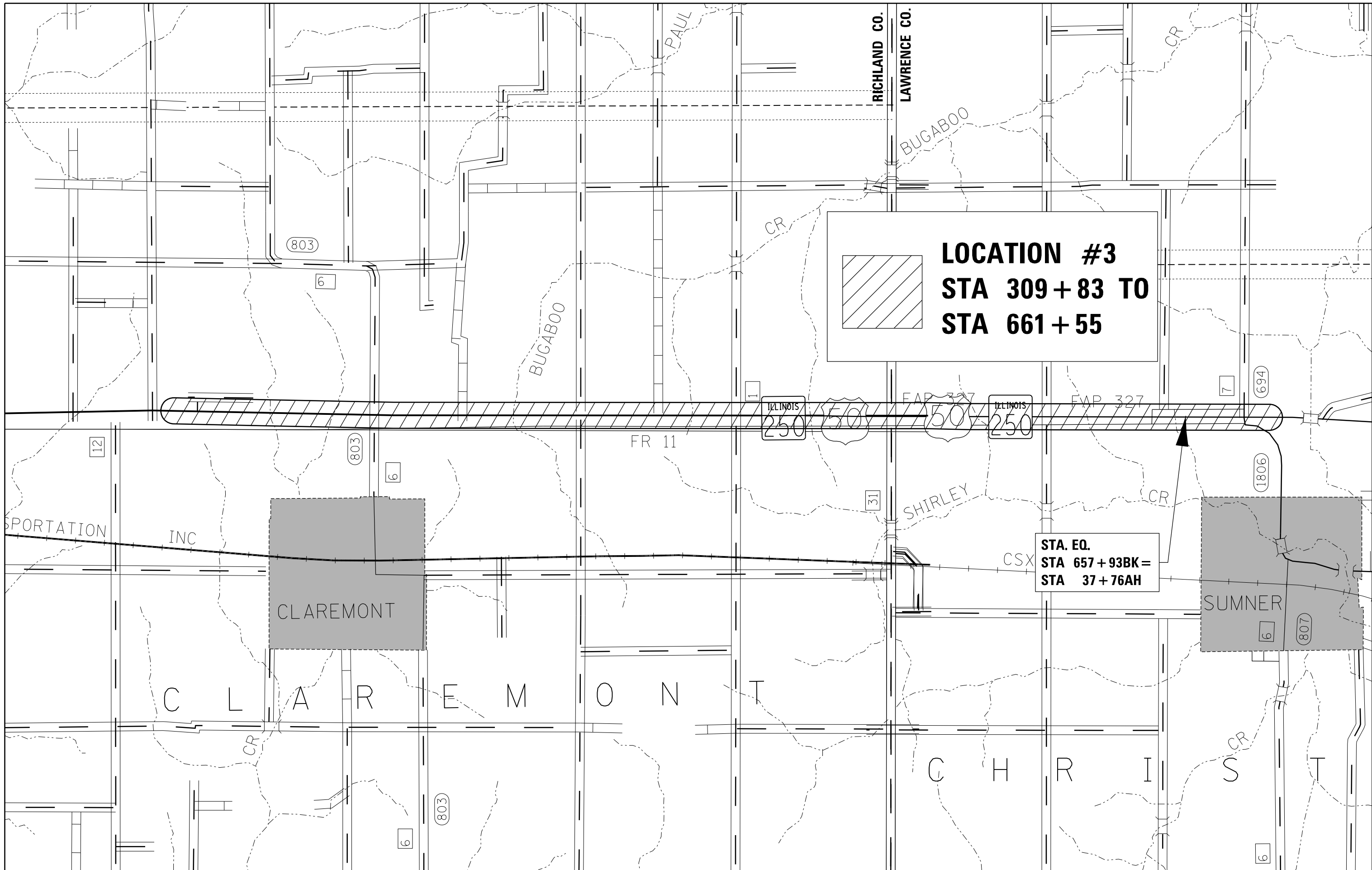
FILE NAME =	USER NAME = steffenk	DESIGNED -	REVISED -
p:\IL\084EBIDINTEG\illinois.gov\PWIDOT\Documents\DOT Offices\District 7\Projects\74731\Drawings\CAD\Sheets\0774731-shr-cover.dwg		DRAWN -	REVISED -
Default		CHECKED -	REVISED -
	PLOT SCALE = 100.0000' / in.	DATE -	REVISED -
	PLOT DATE = 10/30/2015		

STATE OF ILLINOIS
DEPARTMENT OF TRANSPORTATION

RICHLAND COUNTY LOCATION MAP

F.A.P. RTE.	SECTION	COUNTY	TOTAL SHEETS	SHEET NO.
327	D7 PATCHING 2016-3		9	4
•CLAY, RICHLAND, LAWRENCE			CONTRACT NO. 74731	
ILLINOIS FED. AID PROJECT				

SCALE: SHEET OF SHEETS STA. TO STA.



LOCATION #3
STA 309 + 83 TO
STA 661 + 55

STA. EQ.
STA 657 + 93BK =
STA 37 + 76AH

FILE NAME =	USER NAME = steffenk	DESIGNED -	REVISED -
p:\11084EBID\INTEG.illinois.gov\PIWIDOT\Documents\DOT Offices\District 7\Projects\74731\Drawings\CAB\Sheets\0774731-shr-cover.dwg		REVISION	REVISED -
Default	PLOT SCALE = 100.0000' / in.	CHECKED -	REVISED -
	PLOT DATE = 10/30/2015	DATE -	REVISED -

STATE OF ILLINOIS
DEPARTMENT OF TRANSPORTATION

LAWRENCE COUNTY LOCATION MAP

SCALE: SHEET OF SHEETS STA. TO STA.

F.A.P. RTE.	SECTION	COUNTY	TOTAL SHEETS	SHEET NO.
327	D7 PATCHING 2016-3		9	5
*CLAY, RICHLAND, LAWRENCE			CONTRACT NO. 74731	
ILLINOIS FED. AID PROJECT				

100%
STATE

SUMMARY OF QUANTITIES			TOTAL QUANTITIES	CONSTRUCTION TYPE CODE		
CODE NO	ITEM	UNIT		0005 CLAY COUNTY	0005 RICHLAND COUNTY	0005 LAWRENCE COUNTY
44201007	CLASS B PATCHES, TYPE II, 13 INCH	SQ YD	1097.2	275.7	442.9	378.6
44201011	CLASS B PATCHES, TYPE III, 13 INCH	SQ YD	127.3	72.6	54.7	
44201013	CLASS B PATCHES, TYPE IV, 13 INCH	SQ YD	1077.8	507.1	53.4	517.3
44201294	CLASS B PATCH - EXPANSION JOINT	FOOT	100	100		
44201296	DEFORMED BARS - EXPANSION JOINT	EACH	28	28		
44201299	DOWEL BARS 1 1/2"	EACH	3076	928	1168	980
44213100	PAVEMENT FABRIC	SQ YD	1205.1	579.7	108.1	517.3
44213200	SAW CUTS	FOOT	9080.5	2890	3009	3181.5
44213204	TIE BARS 3/4"	EACH	289	133	16	140
67100100	MOBILIZATION	LSUM	1	0.4	0.3	0.3
70100310	TRAFFIC CONTROL AND PROTECTION, STANDARD	LSUM	1	1		
	701421					
70100450	TRAFFIC CONTROL AND PROTECTION, STANDARD	LSUM	1	0.4	0.3	0.3
	701201					
X7015005	CHANGEABLE MESSAGE SIGN	CAL DA	28	9	9	10

LOCATION 1

Pay 10/23/15 Y or blank	Patch Number	Lane	Sta	Length ft	Width ft	Plan Depth in	Measured Depth in	% Change Thickness	Type 1 sy	44201007 Type 2 sy	44201011 Type 3 sy	44201013 Type 4 sy	44213204 Tie Bars ea	44213100 Pavt Fab sy	44213200 Saw Cut ft	44201299 Dowels ea	44201294 CL B Expan ft	44201296 Deformed Bars ea	
Y	1	WB	14+858	6.0	12.0	13.0	13.0	0.00%		8.0					49.5	20.00			
Y	2	WB	15+086	6.0	12.0	13.0	13.0	0.00%		8.0					49.5	20.00			
Y	3	WB	15+485	10.0	12.0	13.0	13.0	0.00%		13.3					57.5	20.00			
Y	4	WB	16+070	6.0	12.0	13.0	13.0	0.00%		8.0					49.5	20.00			
Y	5	WB	16+595	12.0	12.0	13.0	13.0	0.00%			16.0			16.0	61.5	20.00			
Y	6	WB	17+047	21.0	12.0	13.0	13.0	0.00%				28.0	10	28.0	79.5	20.00			
Y	7	EB	14+858	13.0	12.0	13.0	13.0	0.00%			17.3			17.3	63.5	20.00			
Y	8	EB	15+086	6.0	12.0	13.0	13.0	0.00%		8.0					49.5	20.00			
Y	9	EB	15+485	10.0	12.0	13.0	13.0	0.00%		13.3					57.5	20.00			
Y	10	EB	16+070	6.0	12.0	13.0	13.0	0.00%		8.0					49.5	20.00			
Y	11	EB	16+595	12.0	12.0	13.0	13.0	0.00%			16.0			16.0	61.5	20.00			
Y	12	EB	17+047	21.0	12.0	13.0	13.0	0.00%				28.0	10	28.0	79.5	20.00			
Y	13	WB	732+99	6.0	12.5	13.0	13.0	0.00%		8.3					51.0	20.00			
Y	14	WB	734+36	6.0	12.5	13.0	13.0	0.00%		8.3					51.0	20.00			
Y	15	WB	738+34	6.0	12.5	13.0	13.0	0.00%		8.3					51.0	20.00			
Y	16	WB	**738+68	6.0	12.5	13.0	13.0	0.00%		8.3					51.0	20.00	25.0	5.0	
Y	17	WB	**740+44	10.0	12.5	13.0	13.0	0.00%		13.9					59.0	20.00	25.0	9.0	
Y	18	WB	760+80	20.0	12.5	13.0	13.0	0.00%				27.8	9	27.8	79.0	20.00			
Y	19	WB	761+00	6.0	12.5	13.0	13.0	0.00%		8.3					51.0	20.00			
Y	20	WB	877+50	12.0	19.0	13.0	13.0	0.00%				25.3		25.3	82.5	28.00			
Y	21	WB	896+01	6.0	12.0	13.0	13.0	0.00%		8.0					49.5	20.00			
Y	22	EB	653+44	15.0	14.0	13.0	13.0	0.00%			23.3		7	23.3	73.5	24.00			
Y	23	EB	653+90	6.0	14.0	13.0	13.0	0.00%		9.3					55.5	24.00			
Y	24	EB	654+18	93.0	15.0	13.0	13.0	0.00%				155.0	46	155.0	232.5	28.00			
Y	25	EB	655+74	20.0	15.0	13.0	13.0	0.00%				33.3	9	33.3	86.5	28.00			
Y	26	EB	659+21	6.0	12.5	13.0	13.0	0.00%		8.3					51.0	20.00			
Y	27	EB	720+88	50.0	12.5	13.0	13.0	0.00%				69.4	24	69.4	139.0	20.00			
Y	28	EB	732+99	6.0	12.5	13.0	13.0	0.00%		8.3					51.0	20.00			
Y	29	EB	734+36	6.0	12.5	13.0	13.0	0.00%		8.3					51.0	20.00			
Y	30	EB	738+34	6.0	12.5	13.0	13.0	0.00%		8.3					51.0	20.00			
Y	31	EB	**738+68	6.0	12.5	13.0	13.0	0.00%		8.3					51.0	20.00	25.0	5.0	
Y	32	EB	**740+44	10.0	12.5	13.0	13.0	0.00%		13.9					59.0	20.00	25.0	9.0	
Y	33	EB	760+80	10.0	12.5	13.0	13.0	0.00%		13.9					59.0	20.00			
Y	34	EB	761+00	6.0	12.5	13.0	13.0	0.00%		8.3					51.0	20.00			
Y	35	EB	804+88	37.0	20.0	13.0	13.0	0.00%				82.2	18	82.2	135.5	28.00			
Y	36	EB	805+69	13.0	19.0	13.0	13.0	0.00%				27.4		27.4	84.5	28.00			
Y	37	EB	806+22	6.0	19.0	13.0	13.0	0.00%		12.7					70.5	28.00			
Y	38	EB	806+73	6.0	19.0	13.0	13.0	0.00%		12.7					70.5	28.00			
Y	39	EB	806+86	6.0	19.0	13.0	13.0	0.00%		12.7					70.5	28.00			
Y	40	EB	806+99	6.0	19.0	13.0	13.0	0.00%		12.7					70.5	28.00			
Y	41	EB	877+50	12.0	23.0	13.0	13.0	0.00%				30.7		30.7	94.5	28.00			
Y	42	EB	896+01	6.0	12.0	13.0	13.0	0.00%		8.0					49.5	20.00			
									Totals	0.0	275.7	72.6	507.1	133.0	579.7	2890.0	928.0	100.0	28.0

** Denotes Expansion Patch

Number Ea. 0 28 4 10

FILE NAME =	USER NAME = steffenk	DESIGNED -	REVISED -	STATE OF ILLINOIS DEPARTMENT OF TRANSPORTATION	PATCHING SCHEDULE - CLAY COUNTY	F.A.P. RTE.	SECTION	COUNTY	TOTAL SHEETS	SHEET NO.
p:\11\084EBIDINTEG\Illinois.gov\PIDOT\Documents\DOT Offices\District 7\Projects\747\Drawings\CAD\Sheets\0774731-shr-schedule	PLotted	CHECKED -	REVISED -			327	D7 PATCHING 2016-3	*	9	7
Default	PLLOT SCALE = 100.0000' / in.	DATE -	REVISED -			*CLAY, RICHLAND, LAWRENCE		CONTRACT NO. 74731		
	PLLOT DATE = 10/30/2015					SCALE:	SHEET OF SHEETS	STA.	TO STA.	ILLINOIS FED. AID PROJECT

LOCATION 2

Pay 10/23/15 Y or blank	Patch Number	Lane	Sta	Length ft	Width ft	Plan Depth in	Measured Depth in	% Change Thickness	Type 1 sy	44201007 Type 2 sy	44201011 Type 3 sy	44201013 Type 4 sy	44213204 Tie Bars ea	44213100 Pavt Fab sy	44213200 Saw Cut ft	44201299 Dowels ea
Y	1	WB	713+00	6.0	12.0	13.8	13.8	0.00%		8.0					49.5	20.00
Y	2	WB	719+00	6.0	12.0	13.8	13.8	0.00%		8.0					49.5	20.00
Y	3	WB	728+80	6.0	12.0	13.8	13.8	0.00%		8.0					49.5	20.00
Y	4	WB	741+75	6.0	12.0	13.8	13.8	0.00%		8.0					49.5	20.00
Y	5	WB turn	789+50	12.0	20.0	13.8	13.8	0.00%				26.7		26.7	85.5	28.00
Y	6	WB turn	790+33	8.0	12.0	13.8	13.8	0.00%		10.7					53.5	20.00
Y	7	WB turn	791+00	8.0	12.0	13.8	13.8	0.00%		10.7					53.5	20.00
Y	8	WB	795+04	6.0	12.0	13.8	13.8	0.00%		8.0					49.5	20.00
Y	9	WB	795+41	6.0	12.0	13.8	13.8	0.00%		8.0					49.5	20.00
Y	10	WB	795+95	6.0	12.0	13.8	13.8	0.00%		8.0					49.5	20.00
Y	11	WB	805+13	15.0	12.0	13.8	13.8	0.00%			20.0		7	20.0	67.5	20.00
Y	12	WB	806+73	6.0	12.0	13.8	13.8	0.00%		8.0					49.5	20.00
Y	13	WB	808+67	6.0	12.0	13.8	13.8	0.00%		8.0					49.5	20.00
Y	14	WB	813+81	6.0	12.0	13.8	13.8	0.00%		8.0					49.5	20.00
Y	15	WB	814+84	6.0	12.0	13.8	13.8	0.00%		8.0					49.5	20.00
Y	16	WB	815+89	20.0	12.0	13.8	13.8	0.00%				26.7	9	26.7	77.5	20.00
Y	17	WB	821+32	6.0	12.0	13.8	13.8	0.00%		8.0					49.5	20.00
Y	18	WB	827+00	6.0	12.0	13.8	13.8	0.00%		8.0					49.5	20.00
Y	19	WB	823+02	6.0	12.0	13.8	13.8	0.00%		8.0					49.5	20.00
Y	20	WB	835+37	6.0	12.0	13.8	13.8	0.00%		8.0					49.5	20.00
Y	21	WB	837+50	6.0	12.0	13.8	13.8	0.00%		8.0					49.5	20.00
Y	22	WB	841+36	6.0	12.0	13.8	13.8	0.00%		8.0					49.5	20.00
Y	23	WB	843+16	8.0	12.0	13.8	13.8	0.00%		10.7					53.5	20.00
Y	24	WB	850+05	6.0	12.0	13.8	13.8	0.00%		8.0					49.5	20.00
Y	25	WB	851+06	6.0	12.0	13.8	13.8	0.00%		8.0					49.5	20.00
Y	26	WB	852+29	6.0	12.0	13.8	13.8	0.00%		8.0					49.5	20.00
Y	27	WB	869+53	6.0	12.0	13.8	13.8	0.00%		8.0					49.5	20.00
Y	28	WB	892+50	8.0	12.0	13.8	13.8	0.00%		10.7					53.5	20.00
Y	29	WB	892+80	12.0	12.0	13.8	13.8	0.00%			16.0			16.0	61.5	20.00
Y	30	WB	892+94	8.0	12.0	13.8	13.8	0.00%		10.7					53.5	20.00
Y	31	WB	893+27	6.0	12.0	13.8	13.8	0.00%		8.0					49.5	20.00
Y	32	EB	713+00	6.0	12.0	13.8	13.8	0.00%		8.0					49.5	20.00
Y	33	EB	719+00	6.0	12.0	13.8	13.8	0.00%		8.0					49.5	20.00
Y	34	EB	728+80	6.0	12.0	13.8	13.8	0.00%		8.0					49.5	20.00
Y	35	EB	741+75	6.0	12.0	13.8	13.8	0.00%		8.0					49.5	20.00
Y	36	EB Rt In	793+07	6.0	12.0	13.8	13.8	0.00%		8.0					49.5	20.00
Y	37	EB Rt In	793+98	6.0	12.0	13.8	13.8	0.00%		8.0					49.5	20.00
Y	38	EB	794+24	6.0	12.0	13.8	13.8	0.00%		8.0					49.5	20.00
Y	39	EB Rt In	794+41	6.0	12.0	13.8	13.8	0.00%		8.0					49.5	20.00
Y	40	EB Rt In	794+59	14.0	12.0	13.8	13.8	0.00%			18.7			18.7	65.5	20.00
Y	41	EB	794+80	6.0	12.0	13.8	13.8	0.00%		8.0					49.5	20.00
Y	42	EB Rt In	795+04	6.0	12.0	13.8	13.8	0.00%		8.0					49.5	20.00
Y	43	EB	795+41	6.0	12.0	13.8	13.8	0.00%		8.0					49.5	20.00
Y	44	EB	805+13	8.0	12.0	13.8	13.8	0.00%		10.7					53.5	20.00
Y	45	EB	806+73	6.0	12.0	13.8	13.8	0.00%		8.0					49.5	20.00
Y	46	EB	812+93	6.0	12.0	13.8	13.8	0.00%		8.0					49.5	20.00
Y	47	EB	814+84	6.0	12.0	13.8	13.8	0.00%		8.0					49.5	20.00
Y	48	EB	821+32	6.0	12.0	13.8	13.8	0.00%		8.0					49.5	20.00
Y	49	EB	827+00	6.0	12.0	13.8	13.8	0.00%		8.0					49.5	20.00
Y	50	EB	833+03	6.0	12.0	13.8	13.8	0.00%		8.0					49.5	20.00
Y	51	EB	837+70	6.0	12.0	13.8	13.8	0.00%		8.0					49.5	20.00
Y	52	EB	841+36	6.0	12.0	13.8	13.8	0.00%		8.0					49.5	20.00
Y	53	EB	846+31	6.0	12.0	13.8	13.8	0.00%		8.0					49.5	20.00
Y	54	EB	852+29	6.0	12.0	13.8	13.8	0.00%		8.0					49.5	20.00
Y	55	EB	869+53	6.0	12.0	13.8	13.8	0.00%		8.0					49.5	20.00
Y	56	EB	878+99	6.0	12.0	13.8	13.8	0.00%		8.0					49.5	20.00
Y	57	EB	892+50	8.0	12.0	13.8	13.8	0.00%		10.7					53.5	20.00
Y	58	EB	892+80	6.0	12.0	13.8	13.8	0.00%		8.0					49.5	20.00
Totals									0.0	442.9	54.7	53.4	16.0	108.1	3009.0	1168.0

Number Ea 0 53 3 2

FILE NAME =	USER NAME = steffenk	DESIGNED -	REVISED -	STATE OF ILLINOIS DEPARTMENT OF TRANSPORTATION	PATCHING SCHEDULE - RICHLAND COUNTY	F.A.P. RTE.	SECTION	COUNTY	TOTAL SHEETS	SHEET NO.
p:\11\084EBIDINTEG\illinois.gov\PIDOT\Documents\DOT Offices\District 7\Projects\74731\Drawings\CAD\Sheets\0774731-sht-schedule	PLotted	CHECKED -	REVISED -			327	D7 PATCHING 2016-3	*	9	8
Default	PLot SCALE = 100.0000' / in.	DATE -	REVISED -			*CLAY, RICHLAND, LAWRENCE		CONTRACT NO. 74731		
	PLot DATE = 10/30/2015					SCALE:	SHEET OF SHEETS	STA.	TO STA.	ILLINOIS FED. AID PROJECT

