

01-15-2021 LETTING ITEM 023

FOR INDEX OF SHEETS & STATE STANDARDS
SEE SHEET NO. 2

STATE OF ILLINOIS
DEPARTMENT OF TRANSPORTATION
DIVISION OF HIGHWAYS

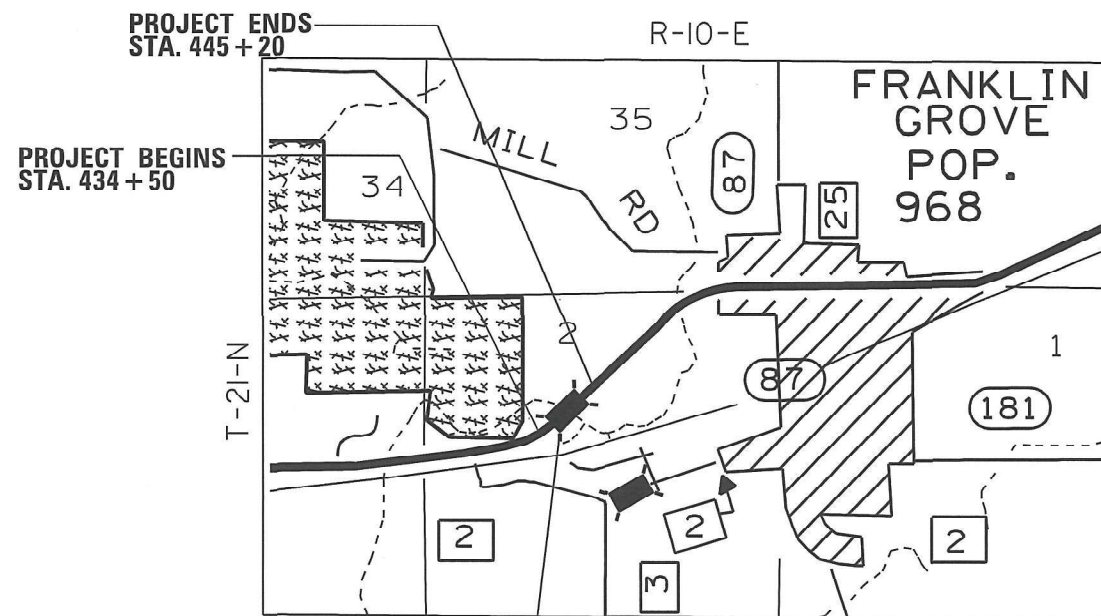
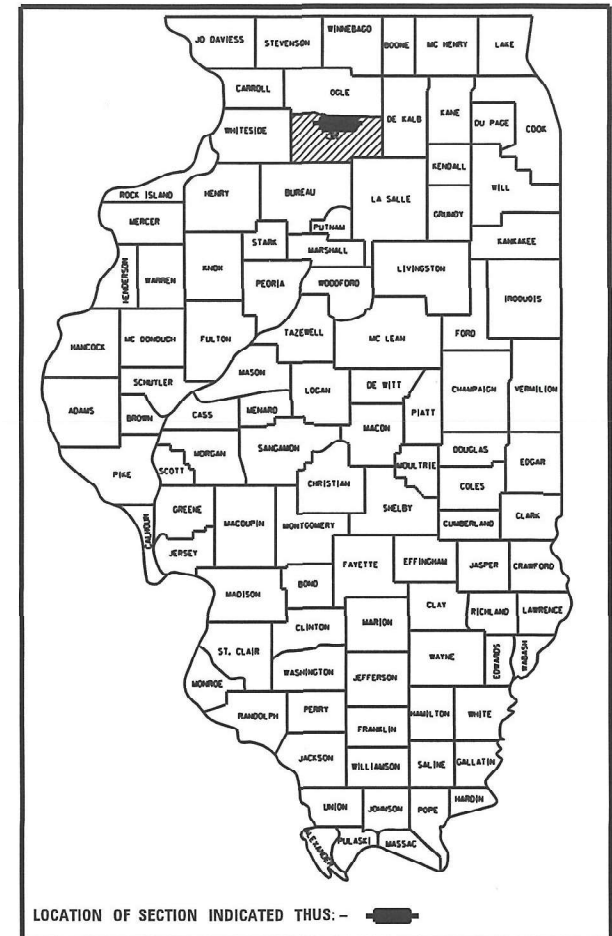
**PROPOSED
HIGHWAY PLANS**

FAP 567 (IL-38)
SECTION D2 RS 2021-1
LEE COUNTY
C-92-010-21

| FAP RTE. | SECTION | COUNTY | TOTAL SHEETS | SHEET NO. |
|----------|--------------|--------|--------------|-----------|
| 567 | D2 RS 2021-1 | LEE | 8 | 1 |

CONTRACT NO. 64P67

D-92-006-21



BRIDGE OMISSION FOR PAVING ONLY
STA 437 + 79 - 440 + 55

TOWNSHIP (SECTION):
CHANA (2)

J.U.L.I.E.
JOINT UTILITY LOCATION INFORMATION FOR EXCAVATION
1-800-892-0123

CONTRACT NO. 64P67

GROSS LENGTH OF PROJECT = 1070 FT = 0.20 MILES
NET LENGTH OF PROJECT = 1070 FT = 0.20 MILES

STATE OF ILLINOIS
DEPARTMENT OF TRANSPORTATION
DIVISION OF HIGHWAYS

SUBMITTED October 05, 20 20
[Signature]
REGION ENGINEER

December 4, 2020
[Signature]
ENGINEER OF DESIGN AND ENVIRONMENT

December 4, 2020
[Signature]
DIRECTOR OF HIGHWAYS PROJECT IMPLEMENTATION 13

PRINTED BY THE AUTHORITY
OF THE STATE OF ILLINOIS

INDEX

- 1 Cover Sheet
- 2 Index of Sheets / District & State Standards
- 3 Summary of Quantities
- 4 General Notes
- 5-6 Schedule of Quantities
- 7-8 Typicals

STATE STANDARDS

- 701001-02 OFF-ROAD OPERATIONS, 2L, 2W, MORE THAN 15'(4.5m) AWAY
- 701006-05 OFF-ROAD OPERATIONS, 2L, 2W, 15'(4.5m) TO 24"(600mm) FROM PAVEMENT EDGE
- 701011-04 OFF-ROAD MOVING OPERATIONS, 2L, 2W, DAY ONLY
- 701306-04 LANE CLOSURE, 2L, 2W, SLOW MOVING OPERATIONS DAY ONLY, FOR SPEEDS \geq 45MPH
- 701311-03 LANE CLOSURE, 2L, 2W, MOVING OPERATIONS - DAY ONLY
- 701901-08 TRAFFIC CONTROL DEVICES
- 720011-01 METAL POST FOR SIGNS, MARKERS AND DELINEATORS
- 728001-01 TELESCOPING STEEL SIGN SUPPORT
- 729001-01 APPLICATIONS OF TYPES A AND B METAL POST (FOR SIGNS & MARKERS)
- 780001-05 TYPICAL PAVEMENT MARKINGS

DISTRICT STANDARDS

- 48.2 SAFETY EDGE (SMART PROJECTS)
- 34.1 WORK ZONE SIGN DETAILS
- 41.1 TYPICAL PAVEMENT MARKINGS

SUMMARY OF QUANTITIES

FAP 567 (IL 38)
SECTION D2 RS 2021-1
LEE COUNTY
CONTRACT # 64P67
SHEET 3 OF 8

100% State
0005

| CODE NO. | ITEM | UNIT | TOTAL QUANTITY |
|-----------------|--|-------------|-----------------------|
| 40600290 | BITUMINOUS MATERIALS (TACK COAT) | POUND | 1,303 |
| 40600990 | TEMPORARY RAMP | SQ YD | 64 |
| 40604050 | HOT-MIX ASPHALT SURFACE COURSE, IL-9.5, MIX "C", N50 | TON | 334 |
| 44000157 | HOT-MIX ASPHALT SURFACE REMOVAL, 2" | SQ YD | 2895 |
| 48102100 | AGGREGATE WEDGE SHOULDER, TYPE B | TON | 61 |
| 67100100 | MOBILIZATION | L SUM | 1 |
| 70100460 | TRAFFIC CONTROL AND PROTECTION, STANDARD 701306 | L SUM | 1 |
| 70300100 | SHORT TERM PAVEMENT MARKING | FOOT | 321 |
| 70300150 | SHORT TERM PAVEMENT MARKING REMOVAL | SQ FT | 36 |
| * 78001110 | PAINT PAVEMENT MARKING - LINE 4" | FOOT | 6507 |

* **Specialty Items**

GENERAL NOTES

The following Mixture Requirements are applicable for this project:

| | | | |
|--|---------------|--|--|
| Location(s): | RESURFACING | | |
| Mixture Use(s): | SURFACE | | |
| PG: | PG 58-28 | | |
| Design Air Voids: | 4.0@N50 | | |
| Mixture Composition (Mixture Gradation): | IL 9.5 | | |
| Friction Aggregate: | C | | |
| Mixture Weight: | 112 lbs/sy/in | | |
| Quality Management Program: | QC/QA | | |
| Sublot Size: | QC/QA | | |
| Number of Roller Passes ¹⁾ : | | | |

1) When a number of roller passes is specified, the Contractor may opt to use intelligent compaction in lieu of density testing under the Quality Control for Performance (QCP) program.

The area to be tacked or primed shall be limited to that which can be covered with HMA on the next day's production, but no more than five days in advance of the placement of the HMA, unless approved by the Engineer.

Pavement Marking shall be done according to Standard 780001, except as follows:

1. All words, such as ONLY, shall be 8 feet high.
2. All non-freeway arrows shall be the large size.
3. The distance between yellow no-passing lines shall be 8 inches, not 7 inches, as shown in the detail of Typical Lane and Edge Lines.
4. Centerline Skip Dash Pavement Marking on multi-lane divided, multi-lane undivided, and one-way roadway shall be according to District Standard 41.1.

| | | | | | | | | | | | |
|---------------------------|-------------------------------|--------------------------------|-----------|---|----------------------|-----------|--------------------|------------------|--------------|-----------|---|
| FILE NAME = 64P67.GN.DOCX | USER NAME = | DESIGNED - Engineering Systems | REVISED - | STATE OF ILLINOIS DEPARTMENT OF TRANSPORTATION | GENERAL NOTES | ROUTE | SECTION | COUNTY | TOTAL SHEETS | SHEET NO. | |
| | | | | | | | FAP 567 | D2 RS 2021-1 | Lee | 8 | 1 |
| | PLOT SCALE = | CHECKED - | REVISED - | | | | CONTRACT NO. 64P67 | | | | |
| | PLOT DATE = 10/2/2020 2:27 PM | DATE = 9/30/2020 1:19 PM | REVISED - | | SCALE: | SHEET NO. | OF | SHEETS | STA. | TO STA. | |
| | | | | | | ILLINOIS | | FED. AID PROJECT | | | |

SCHEDULE OF QUANTITIES

FAP 567 (IL 38)
SECTION D2 RS 2021-1
LEE COUNTY
CONTRACT #64P67
SHEET 5 of 8

40600290 BITUMINOUS MATERIAL (TACK COAT)

| <u>LOCATION</u> | <u>POUND</u> | <u>REMARKS</u> |
|----------------------|--------------|------------------------|
| IL 38 | | |
| STA. 434+50 - 445+20 | 1303 | |
| STA. 437+79 - 440+55 | 0 | Bridge Paving Omission |
| TOTAL | 1303 | |

44000157 HOT-MIX ASPHALT SURFACE REMOVAL, 2"

| <u>LOCATION</u> | <u>SQ YD</u> | <u>REMARKS</u> |
|----------------------|--------------|------------------------|
| IL 38 | | |
| STA. 434+50 - 445+20 | 2895 | |
| STA. 437+79 - 440+55 | 0 | Bridge Paving Omission |
| TOTAL | 2895 | |

40600990 TEMPORARY RAMP

| <u>LOCATION</u> | <u>SQ YD</u> | <u>REMARKS</u> |
|-----------------|--------------|----------------|
| IL 38 | | |
| STA. 434+50 | 16 | |
| STA. 437+79 | 16 | |
| STA. 440+55 | 16 | |
| STA. 445+20 | 16 | |
| TOTAL | 64 | |

48102100 AGGREGATE WEDGE SHOULDER, TYPE B

| <u>LOCATION</u> | <u>TON</u> | <u>REMARKS</u> |
|----------------------|------------|------------------------|
| IL 38 | | |
| STA. 434+50 - 445+20 | 61 | LT & RT |
| STA. 437+79 - 440+55 | 0 | Bridge Paving Omission |
| TOTAL | 61 | |

40603310 HOT-MIX ASPHALT SURFACE COURSE, MIX "C", N50

| <u>LOCATION</u> | <u>TON</u> | <u>REMARKS</u> |
|----------------------|------------|---|
| IL 38 | | |
| STA. 434+50 - 445+20 | 334 | Quantity Includes Shoulders & Safety Edge |
| STA. 437+79 - 440+55 | 0 | Bridge Paving Omission |
| TOTAL | 334 | |

70300100 SHORT TERM PAVEMENT MARKING

| <u>LOCATION</u> | <u>FOOT</u> | <u>REMARKS</u> |
|----------------------|-------------|------------------------|
| IL 38 | | |
| STA. 434+50 - 445+20 | 321 | 3 Applications |
| STA. 437+79 - 440+55 | 0 | Bridge Paving Omission |
| TOTAL | 321 | |

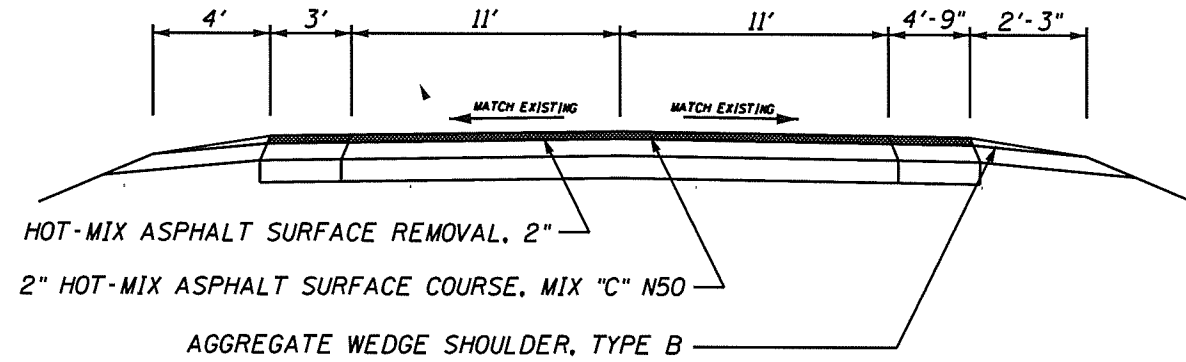
70300150 SHORT TERM PAVEMENT MARKING REMOVAL

| <u>LOCATION</u> | <u>SQ FT</u> | <u>REMARKS</u> |
|----------------------|--------------|------------------------|
| <u>IL 38</u> | | |
| STA. 434+50 - 445+20 | 36 | |
| STA. 437+79 - 440+55 | <u>0</u> | Bridge Paving Omission |
| TOTAL | 36 | |

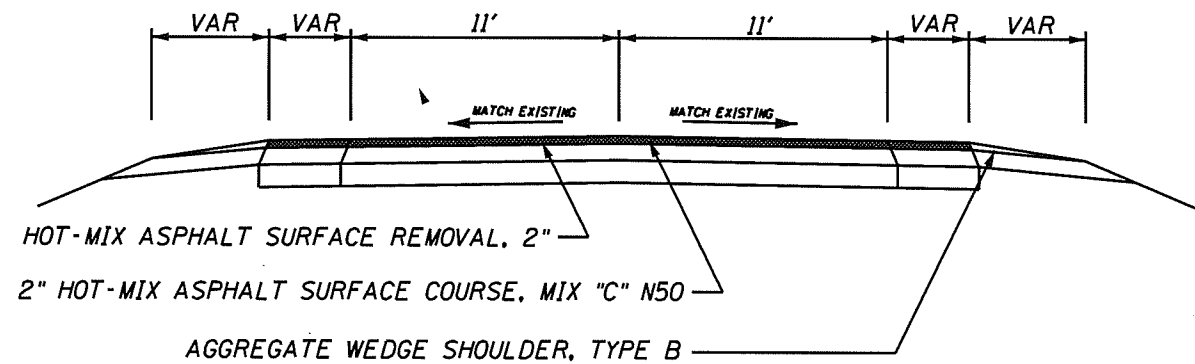
78001110 PAINT PAVEMENT MARKING - LINE 4"

| <u>LOCATION</u> | <u>FOOT</u> | <u>REMARKS</u> |
|----------------------|-------------|-------------------------|
| <u>IL 38</u> | | TWO APPLICATIONS |
| STA. 434+50 - 445+20 | 2140 | WHITE EDGE LINE LEFT |
| STA. 434+50 - 445+20 | 2140 | WHITE EDGE LINE RIGHT |
| STA. 434+50 - 445+20 | 535 | YELLOW CENTER LINE SKIP |
| STA. 434+50 - 437+58 | 616 | NO PASSING SOUTHBOUND |
| STA. 439+82 - 445+20 | <u>1076</u> | NO PASSING NORTHBOUND |
| TOTAL | 6507 | |

TYPICAL SECTIONS



IL RTE 38 TYPICAL SECTION
 STA. 434+50 RT TO STA. 435+45.50 RT
 STA. 434+50 LT TO STA. 436+17 LT
 STA. 441+97 RT TO STA. 442+69 RT
 MATCH EXISTING SUPERELEVATION FROM STA. 434+50 - STA. 436+66

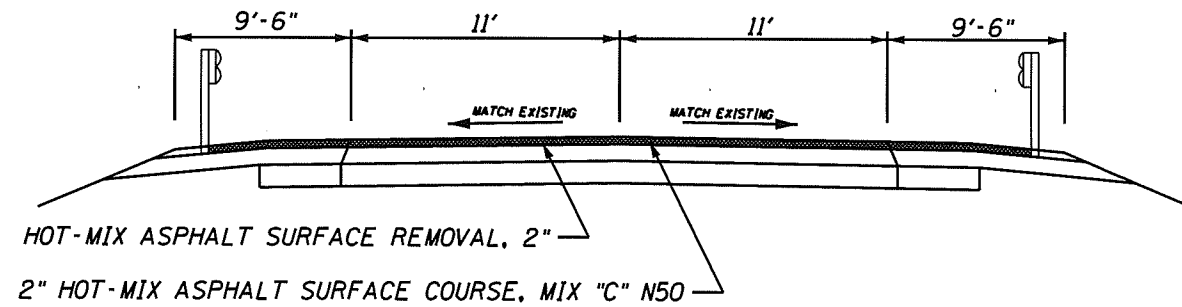


IL RTE 38 TYPICAL SECTION
 STA. 435+45.50 RT TO STA. 435+93 RT
 STA. 436+17 LT TO STA. 436+75 LT
 STA. 441+49.50 RT TO STA. 441+97 RT
 STA. 442+31.25 LT TO STA. 442+89.25 LT
 MATCH EXISTING SUPERELEVATION FROM STA. 434+50 - STA. 436+66

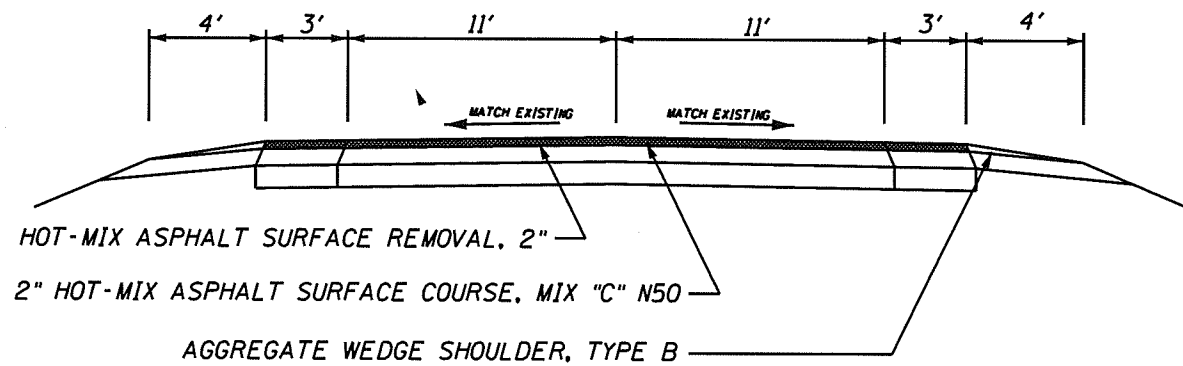
MODEL: Default
 FILE: \\P:\MS05\Projects\64P67\Drawings\21_LehighDavid_A111_38_Franklin_CrossSection.dwg

| | | | | | | | | | | |
|-------------------------------------|------------------|-----------------|---|-----------------------------|--------------------------|--------------------|----------------------|---------------------------|----------------|-------------|
| USER NAME = NICKLAUSLE | DESIGNED - _____ | REVISED - _____ | STATE OF ILLINOIS DEPARTMENT OF TRANSPORTATION | SCALE: _____ | | F.A.P. RTE. 567 | SECTION D2 RS 2021-1 | COUNTY LEE | TOTAL SHEETS 8 | SHEET NO. 7 |
| PLOT SCALE = 1029.9625' / in. | CHECKED - _____ | REVISED - _____ | | SHEET _____ OF _____ SHEETS | STA. _____ TO STA. _____ | CONTRACT NO. 64P67 | | ILLINOIS FED. AID PROJECT | | |
| PLOT DATE = Oct-02-2020 02:29:56 PM | DATE - _____ | REVISED - _____ | | | | | | | | |
| | | | | | | | | | | |

TYPICAL SECTIONS



IL RTE 38 TYPICAL SECTION
 STA. 435+93 RT TO STA. 438+36.75 RT
 STA. 436+75 LT TO STA. 438+31.25 LT
 BRIDGE OMISSION STA. 437+79 TO STA. 440+55
 STA. 439+87.50 LT TO STA. 442+31.25 LT
 STA. 439+93.25 RT TO STA. 441+49.50
 MATCH EXISTING SUPERELEVATION FROM STA. 434+50 - STA. 436+66



IL RTE 38 TYPICAL SECTION
 STA. 442+69 RT TO STA. 445+20 RT
 STA. 442+89.25 LT TO STA. 445+20 LT

MODEL: D:\dwg\11111111.dwg
 FILE NAME: S:\11111111.dwg
 MODEL: D:\dwg\11111111.dwg
 FILE NAME: S:\11111111.dwg

| | | | | | | | | | | | |
|-------------------------------------|------------------|-----------------|---|-----------------------------|--|--------------------|----------------------|---------------------------|----------------|-------------|--|
| USER NAME = NICKLAUSLE | DESIGNED - _____ | REVISED - _____ | STATE OF ILLINOIS DEPARTMENT OF TRANSPORTATION | SCALE: _____ | | F.A.P. RTE. 567 | SECTION D2 RS 2021-1 | COUNTY LEE | TOTAL SHEETS 8 | SHEET NO. 8 | |
| PLOT SCALE = 1029.9625' / in. | CHECKED - _____ | REVISED - _____ | | SHEET _____ OF _____ SHEETS | | CONTRACT NO. 64P67 | | ILLINOIS FED. AID PROJECT | | | |
| PLOT DATE = Oct-02-2020 02:30:16 PM | DATE - _____ | REVISED - _____ | | STA. _____ TO STA. _____ | | | | | | | |
| | | | | | | | | | | | |