

STATE OF ILLINOIS  
DEPARTMENT OF TRANSPORTATION

F.A.P. RTE.	SECTION	COUNTY	TOTAL SHEETS	SHEET NO.
321	(107) CJS	PIKE	17	1
		ILLINOIS	CONTRACT NO. 72L92	

**INDEX OF SHEETS**

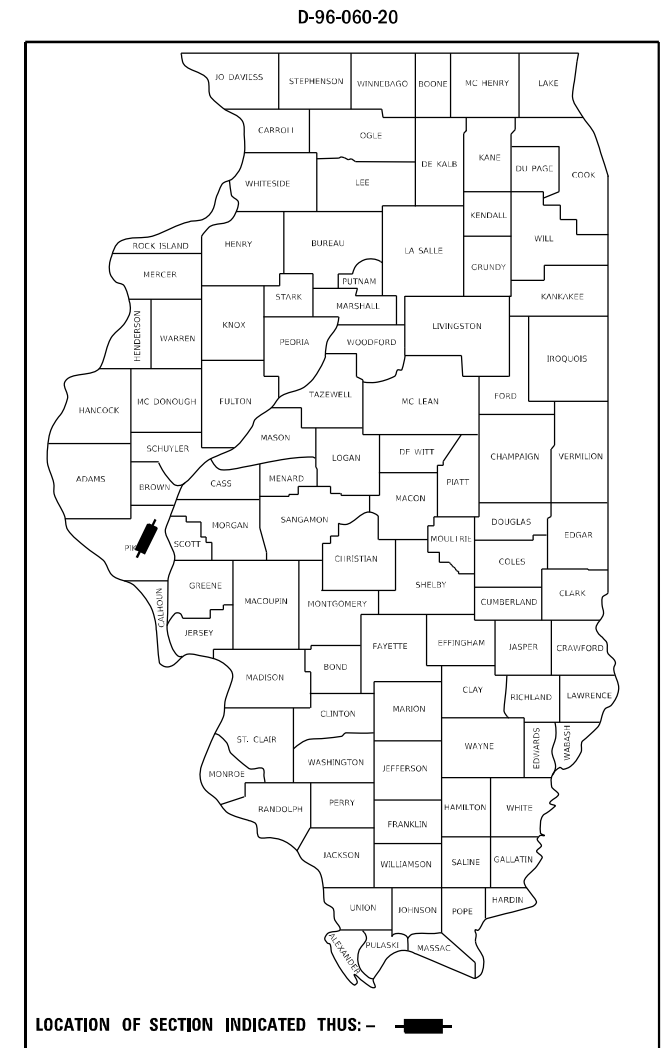
COVER SHEET	1
GENERAL NOTES	2
SUMMARY OF QUANTITIES	3
TYPICAL SECTIONS	4-12
SCHEDULE OF QUANTITIES	13
PLAN SHEETS	14-17

**HIGHWAY STANDARDS**  
000001-08  
001006  
701006-05  
701336-07  
701901-08

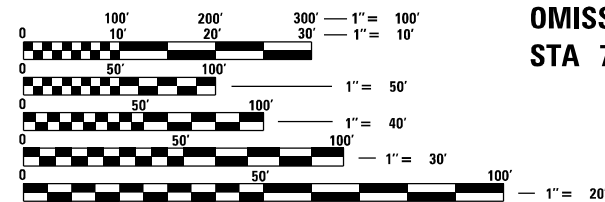
# PROPOSED HIGHWAY PLANS

FAP 321 (US 54)  
SECTION (107) CJS  
PROJECT NHPP-WSOL(678)  
CRACK & JOINT SEAL  
PIKE COUNTY

C-96-090-20



**DESIGN DESIGNATION**  
FAP 321 (US 54)  
OTHER PRINCIPAL ARTERIAL  
ADT 4,788 (2019)  
MU 8.56%  
SU 5.77%



FULL SIZE PLANS HAVE BEEN PREPARED USING STANDARD ENGINEERING SCALES. REDUCED SIZED PLANS WILL NOT CONFORM TO STANDARD SCALES. IN MAKING MEASUREMENTS ON REDUCED PLANS, THE ABOVE SCALES MAY BE USED.

J.U.L.I.E.  
JOINT UTILITY LOCATION INFORMATION FOR EXCAVATORS  
1-800-892-0123  
OR 811

PROJECT ENGINEER: JON KELLEY (217) 785-2739  
PROJECT MANAGER: CHRIS SIEFERT (217) 524-7940

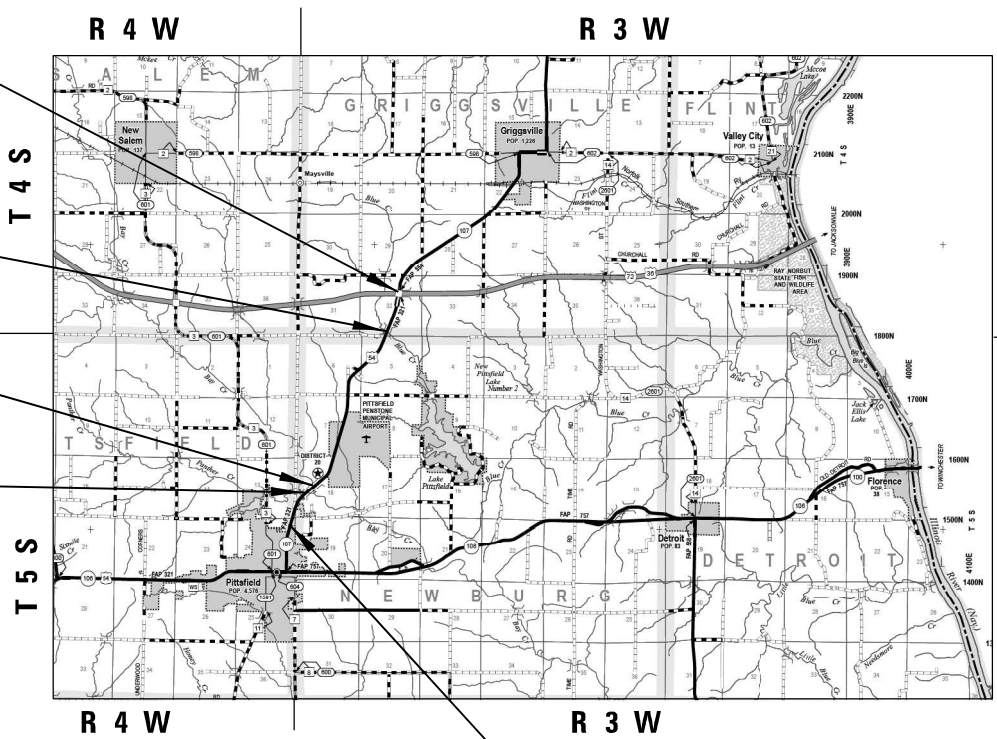
CONTRACT NO. 72L92

END SECTION  
(107) CJS  
STA. 272 + 02.70 US 54

OMISSION SN 075-0132  
STA 238 + 62 TO STA 239 + 94

OMISSION SN 075-0133  
STA 80 + 50 TO STA 82 + 63

OMISSION SN 075-0134  
STA 72 + 46 TO STA 74 + 34



BEGIN SECTION  
(107) CJS  
STA. 42 + 17.96 US 54

GROSS LENGTH = 22,994.78 FT. = 4.355 MILE  
NET LENGTH = 22,461.78 FT. = 4.254 MILE

STATE OF ILLINOIS  
DEPARTMENT OF TRANSPORTATION

SUBMITTED October 7, 2020

*Jon P. Myer*  
REGIONAL ENGINEER

December 4, 2020  
*Scott A. Elk*  
ENGINEER OF DESIGN AND ENVIRONMENT

December 4, 2020  
*James J. Quinn*  
DIRECTOR OF HIGHWAYS PROJECT IMPLEMENTATION

PRINTED BY THE AUTHORITY  
OF THE STATE OF ILLINOIS

**GENERAL NOTES:**

NONE

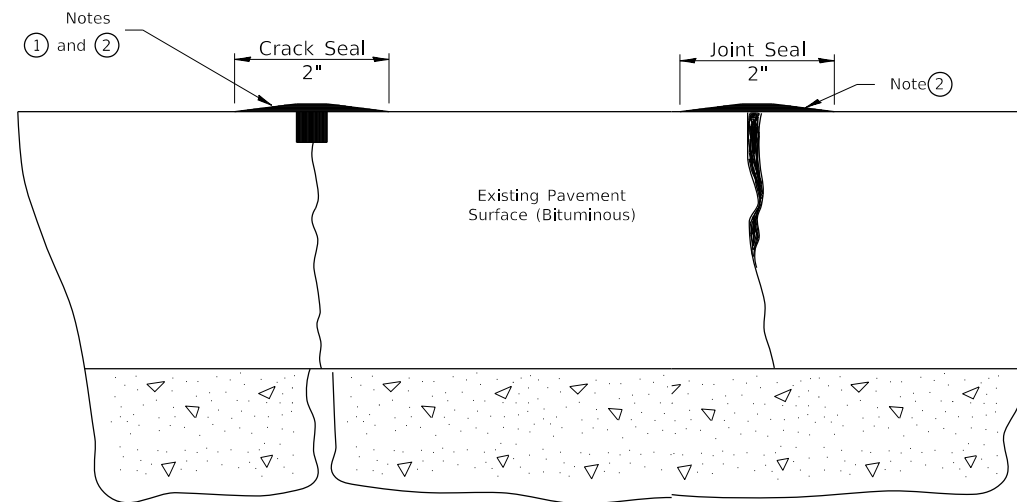
**COMMITMENTS**

NONE

**RATES OF APPLICATION USED TO CALCULATE PLAN QUANTITIES**

CRACK FILLING (FOR ROUTED CRACKS) 0.225 POUND/LIN. FT.  
 CRACK FILLING (FOR NON-ROUTED CRACKS) 0.165 POUND/LIN. FT.

**JOINT/CRACK SEAL DETAIL**



**TRANSVERSE  
CRACKS**

**LONGITUDINAL  
CENTERLINE AND EOP JOINTS**

**NOTES**

- ① Route or saw to 3/4" wide by 3/4" deep; (1:1 ratio).
- ② Overfill with sealant; squeegee to provide 2" wide flush "band-aid" effect; feather edges flush.

CRACK OR JOINT SEAL IN AREAS ADJACENT TO EXISTING PAVEMENT MARKINGS SHALL BE REDUCED OR ELIMINATED AS DIRECTED BY THE ENGINEER.

MODEL: Default  
 FILE: \\nrcs-pub\pub\lanscom.dwg  
 PROJECT: \\nrcs-pub\pub\lanscom.dwg  
 PLOT DATE: 10/8/2020

USER NAME = siefertca	DESIGNED -	REVISED -
	DRAWN -	REVISED -
PLOT SCALE = 80.0000 ' / in.	CHECKED -	REVISED -
PLOT DATE = 10/8/2020	DATE -	REVISED -

**STATE OF ILLINOIS  
DEPARTMENT OF TRANSPORTATION**

**GENERAL NOTES**

SCALE: N/A SHEET 1 OF 1 SHEETS STA. N/A TO STA. N/A

F.A.P. RTE.	SECTION	COUNTY	TOTAL SHEETS	SHEET NO.
321	(107) CJS	PIKE	17	2
CONTRACT NO. 72L92			ILLINOIS FED. AID PROJECT	

PPS# 6-01441-0000

80% FEDERAL  
20% STATE

ROADWAY

0005

RURAL

CODE NO.	ITEM	UNIT	TOTAL QUANTITY	
45100100	CRACK ROUTING (PAVEMENT)	FOOT	1300	1300
45100200	CRACK FILLING	POUND	4673	4673
67100100	MOBILIZATION	L SUM	1	1
70100600	TRAFFIC CONTROL AND PROTECTION, STANDARD 701336	L SUM	1	1

MODEL: Default  
FILE: Model: P:\pub\lancorn.mxd; Illinois.gov\PWIDOT\Documents\DOT\_Offices\District\_6\Projects\0672192\CADD\data\CAD\sheets\0672192-rht-500.dgn

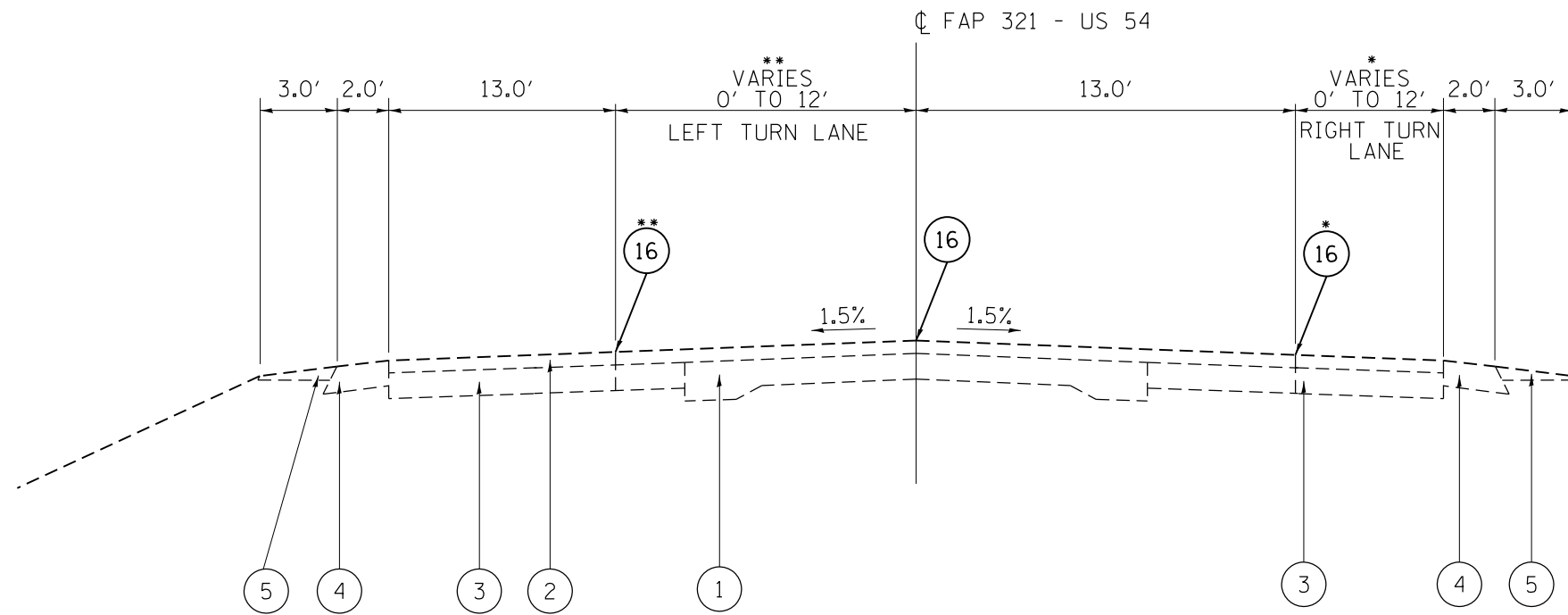
USER NAME = siefertca	DESIGNED -	REVISED -
	DRAWN -	REVISED -
PLOT SCALE = 80.0000 ' / in.	CHECKED -	REVISED -
PLOT DATE = 10/8/2020	DATE -	REVISED -

**STATE OF ILLINOIS  
DEPARTMENT OF TRANSPORTATION**

**SUMMARY OF QUANTITIES**

SCALE: N/A SHEET 1 OF 1 SHEETS STA. N/A TO STA. N/A

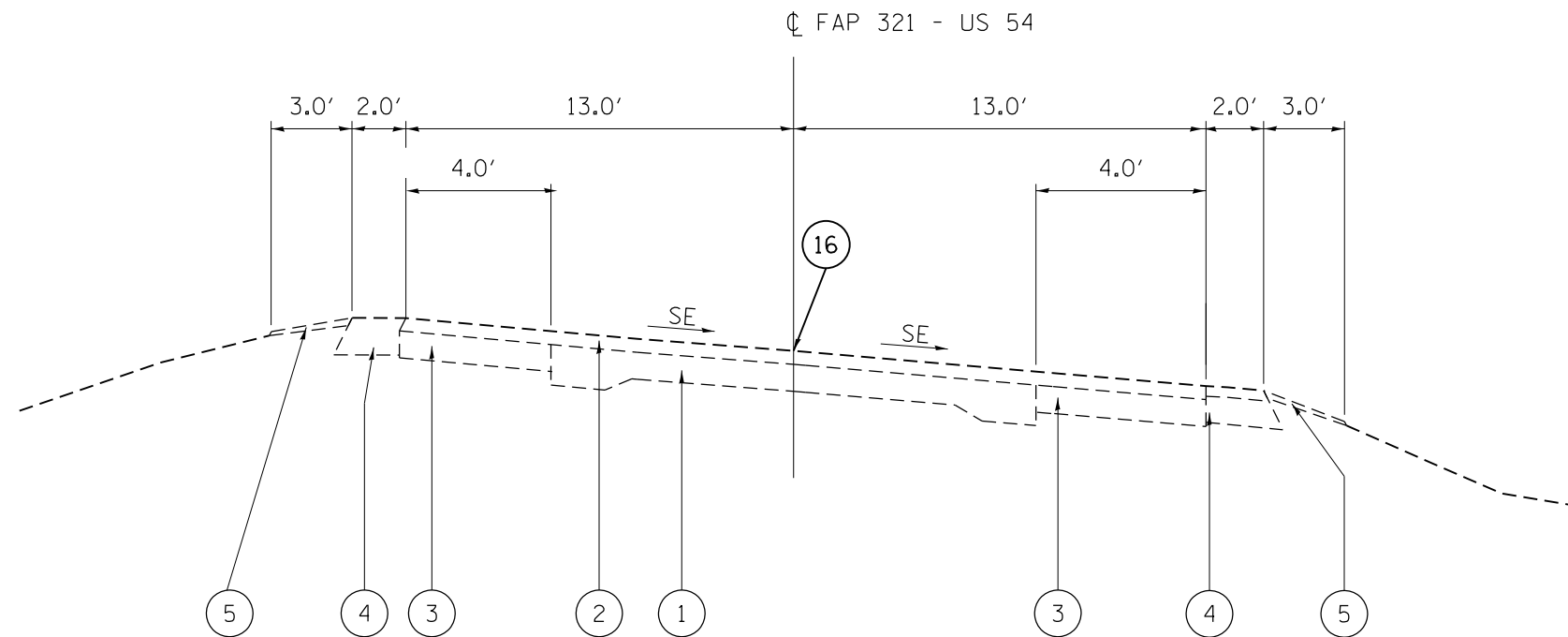
F.A.P. RTE.	SECTION	COUNTY	TOTAL SHEETS	SHEET NO.
321	(107) CJS	PIKE	17	3
CONTRACT NO. 72L92				
ILLINOIS FED. AID PROJECT				



**FAP 321/ US 54**

STA. 42+17.96 - 57+00.11	STA. 189+70.11 - 215+72.10
STA. 85+60.11 - 87+78.09	STA. 232+36.51 - 238+87.49
STA. 102+63.10 - 152+67.10 RIGHT	STA. 238+87.49 - 240+19.52 (BLUE CREEK BRIDGE OMISSION)
STA. 102+75.10 - 152+67.09 LEFT	STA. 240+19.52 - 243+90.51
STA. 163+16.11 - 180+20.08	STA. 251+38.51 - 255+68.29

•STA. 102+63.10 - 104+04.26  
 ••STA. 102+63.10 - 112+30.00



**FAP 321/ US 54**

STA. 57+00.11 - 70+02.11, S.E. = 4.5% RIGHT
STA. 152+67.09 - 163+16.11, S.E. = 3.8% LEFT
STA. 180+20.08 - 189+70.11, S.E. = 7.0% RIGHT

**LEGEND**

- ① EXISTING P.C.C. PAVEMENT - 9''-6''-9''
- ② EXISTING HMA SURF COURSE
- ③ EXISTING P.C.C./HMA BASE COURSE, VARIABLE DEPTH
- ④ EXISTING HMA SHOULDER
- ⑤ EXISTING AGGREGATE SHOULDER
- ⑥ EXISTING CONCRETE GUTTER
- ⑦ EXISTING SUB-SURFACE UNDERDRAIN (Ø=4'')
- ⑧ EXISTING TIE BAR (Ø=0.5'') @ 5' CENTERS
- ⑨ EXISTING LONGITUDINAL METAL JOINT
- ⑩ EXISTING EDGE BAR (Ø=0.75'') SMOOTH
- ⑪ EXISTING CONCRETE MEDIAN, TY C-4
- ⑫ EXISTING CONCRETE MEDIAN SURFACE, 4''
- ⑬ EXISTING CONCRETE CURB AND GUTTER, TYPE M-6.12
- ⑭ EXISTING HMA BASE COURSE, 10 3/4''
- ⑮ EXISTING SUBBASE GRANULAR MATERIAL, TYPE A, 4''
- ⑯ PROPOSED CRACK FILLING

MODEL: Default  
 FILE: Model: P:\pub\baronm.dwg  
 PROJECT: 321 - US 54  
 SHEET: 1 OF 9  
 DATE: 10/8/2020

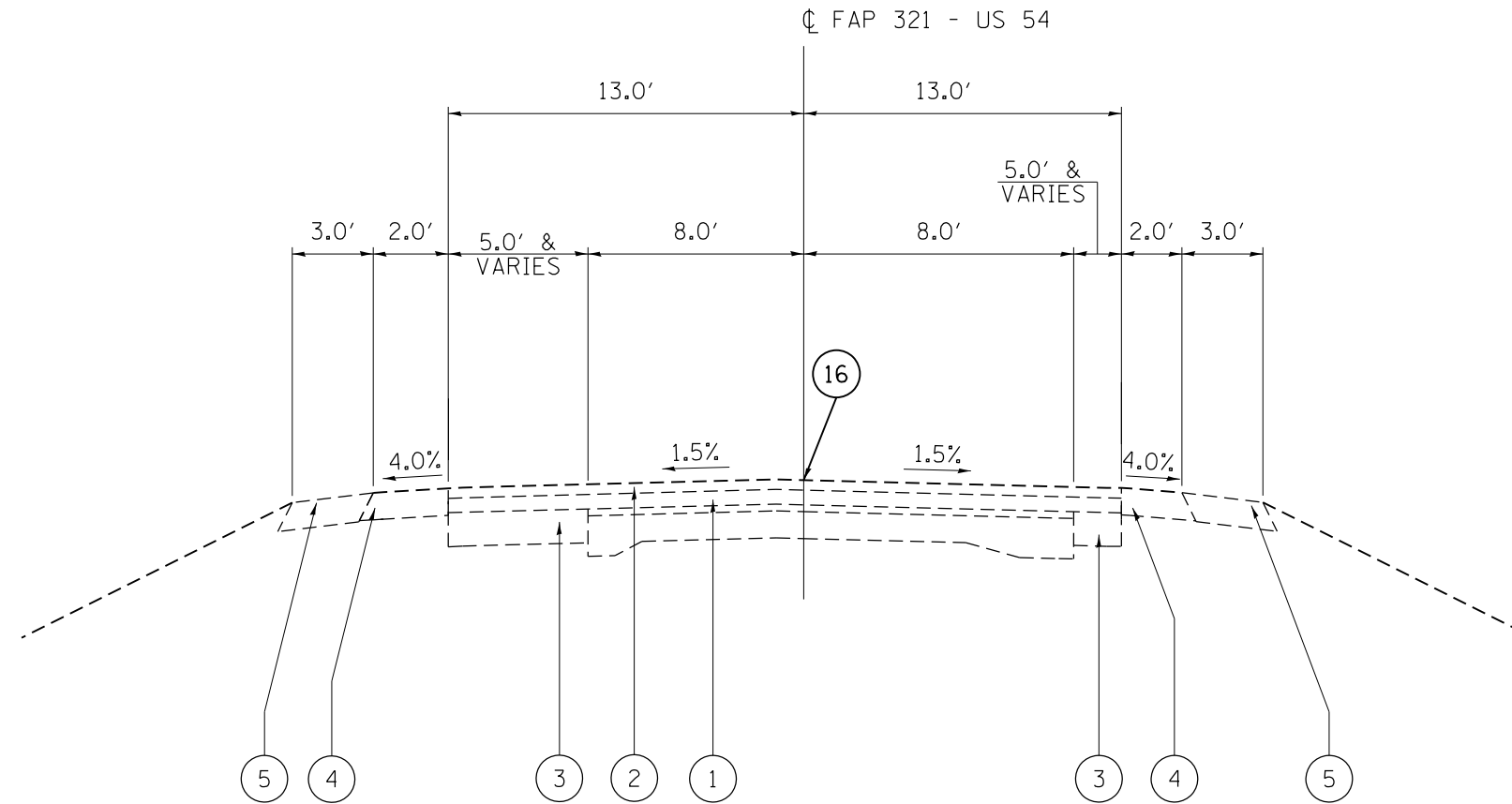
USER NAME = siefertca	DESIGNED -	REVISED -
	DRAWN -	REVISED -
PLOT SCALE = 80.0000 ' / in.	CHECKED -	REVISED -
PLOT DATE = 10/8/2020	DATE -	REVISED -

**STATE OF ILLINOIS  
DEPARTMENT OF TRANSPORTATION**

**TYPICAL SECTIONS**

SCALE: N/A    SHEET 1 OF 9 SHEETS    STA. N/A TO STA. N/A

F.A.P. RTE.	SECTION	COUNTY	TOTAL SHEETS	SHEET NO.
321	(107) CJS	PIKE	17	4
CONTRACT NO. 72L92				
ILLINOIS FED. AID PROJECT				



• EXISTING GUARDRAIL  
 STA. 70+87.35 - 76+29.60, LT.  
 STA. 79+30.33 - 85+09.51, LT.

**FAP 321/ US 54**

STA. 70+02.11 - 72+54.00  
 STA. 72+54.00 - 74+26.00 (PANTHER CREEK BRIDGE OMISSION)  
 STA. 74+26.00 - 80+58.72  
 STA. 80+58.72 - 82+54.88 (BAY CREEK BRIDGE OMISSION)  
 STA. 82+54.88 - 85+60.12

• EXISTING GUARDRAIL  
 STA. 70+51.27 - 75+93.97, RT.  
 STA. 78+28.95 - 83+58.05, RT.

**LEGEND**

- ① EXISTING P.C.C. PAVEMENT - 9''-6''-9''
- ② EXISTING HMA SURF COURSE
- ③ EXISTING P.C.C./HMA BASE COURSE, VARIABLE DEPTH
- ④ EXISTING HMA SHOULDER
- ⑤ EXISTING AGGREGATE SHOULDER
- ⑥ EXISTING CONCRETE GUTTER
- ⑦ EXISTING SUB-SURFACE UNDERDRAIN (Ø=4'')
- ⑧ EXISTING TIE BAR (Ø=0.5'') @ 5' CENTERS
- ⑨ EXISTING LONGITUDINAL METAL JOINT
- ⑩ EXISTING EDGE BAR (Ø=0.75'') SMOOTH
- ⑪ EXISTING CONCRETE MEDIAN, TY C-4
- ⑫ EXISTING CONCRETE MEDIAN SURFACE, 4''
- ⑬ EXISTING CONCRETE CURB AND GUTTER, TYPE M-6.12
- ⑭ EXISTING HMA BASE COURSE, 10 3/4''
- ⑮ EXISTING SUBBASE GRANULAR MATERIAL, TYPE A, 4''
- ⑯ PROPOSED CRACK FILLING

MODEL: Default  
 FILE: Model: P:\pub\haronom.dwg  
 PROJECT: P:\pub\haronom.dwg  
 PLOT DATE: 10/8/2020

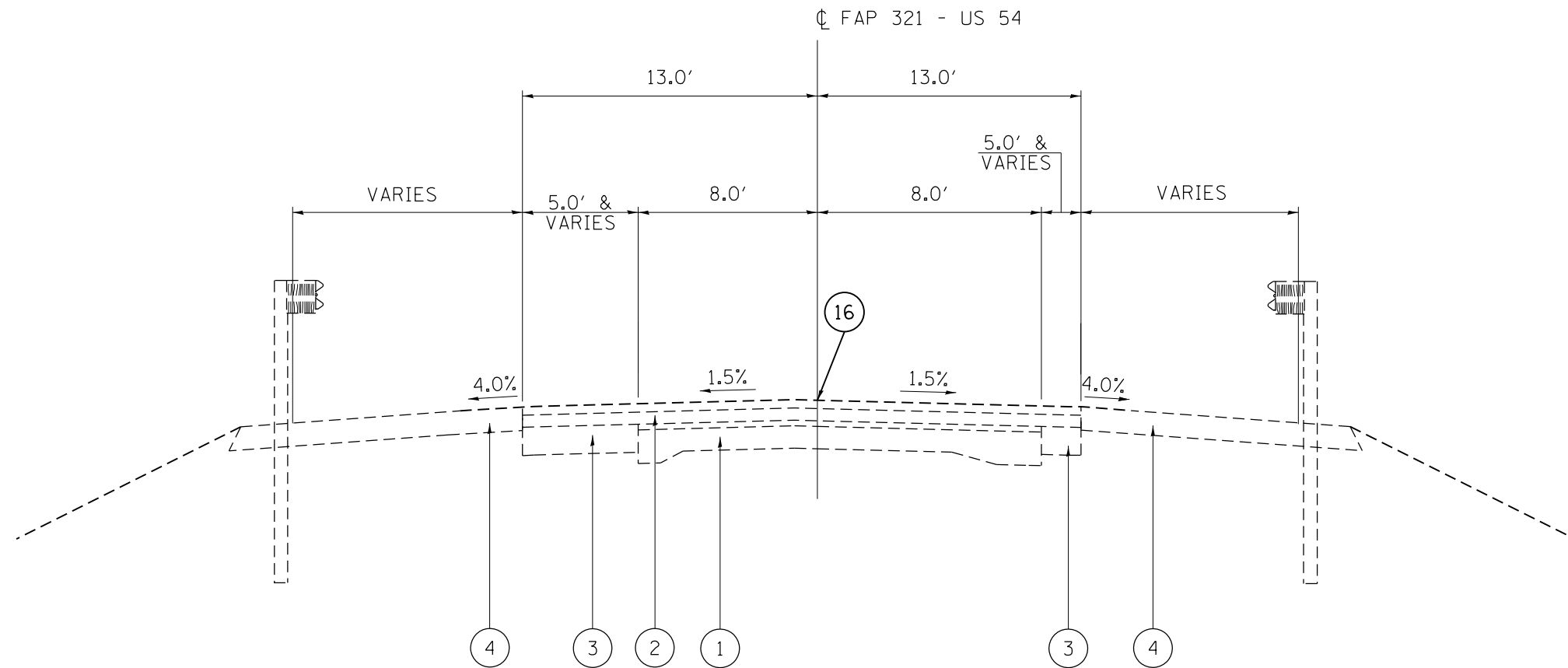
USER NAME = siefertca	DESIGNED -	REVISED -
	DRAWN -	REVISED -
PLOT SCALE = 80.0000' / in.	CHECKED -	REVISED -
PLOT DATE = 10/8/2020	DATE -	REVISED -

**STATE OF ILLINOIS  
DEPARTMENT OF TRANSPORTATION**

**TYPICAL SECTIONS**

SCALE: N/A SHEET 2 OF 9 SHEETS STA. N/A TO STA. N/A

F.A.P. RTE.	SECTION	COUNTY	TOTAL SHEETS	SHEET NO.
321	(107) CJS	PIKE	17	5
CONTRACT NO. 72L92				
ILLINOIS FED. AID PROJECT				



FAP 321/ US 54

SN 075-0134 (PANTHER CREEK BRIDGE)  
 SN 075-0133 (BAY CREEK BRIDGE)  
 SN 075-0132 (BLUE CREEK BRIDGE)  
 SN 075-7158

LEGEND

- ① EXISTING P.C.C. PAVEMENT - 9''-6''-9''
- ② EXISTING HMA SURF COURSE
- ③ EXISTING P.C.C./HMA BASE COURSE, VARIABLE DEPTH
- ④ EXISTING HMA SHOULDER
- ⑤ EXISTING AGGREGATE SHOULDER
- ⑥ EXISTING CONCRETE GUTTER
- ⑦ EXISTING SUB-SURFACE UNDERDRAIN (Ø=4'')
- ⑧ EXISTING TIE BAR (Ø=0.5'') @ 5' CENTERS
- ⑨ EXISTING LONGITUDINAL METAL JOINT
- ⑩ EXISTING EDGE BAR (Ø=0.75'') SMOOTH
- ⑪ EXISTING CONCRETE MEDIAN, TY C-4
- ⑫ EXISTING CONCRETE MEDIAN SURFACE, 4''
- ⑬ EXISTING CONCRETE CURB AND GUTTER, TYPE M-6.12
- ⑭ EXISTING HMA BASE COURSE, 10 3/4''
- ⑮ EXISTING SUBBASE GRANULAR MATERIAL, TYPE A, 4''
- ⑯ PROPOSED CRACK FILLING

MODEL: Default  
 FILE: Model: P:\pub\lancorn.dwg  
 PROJECT: P:\pub\lancorn.dwg  
 PLOT DATE: 10/8/2020

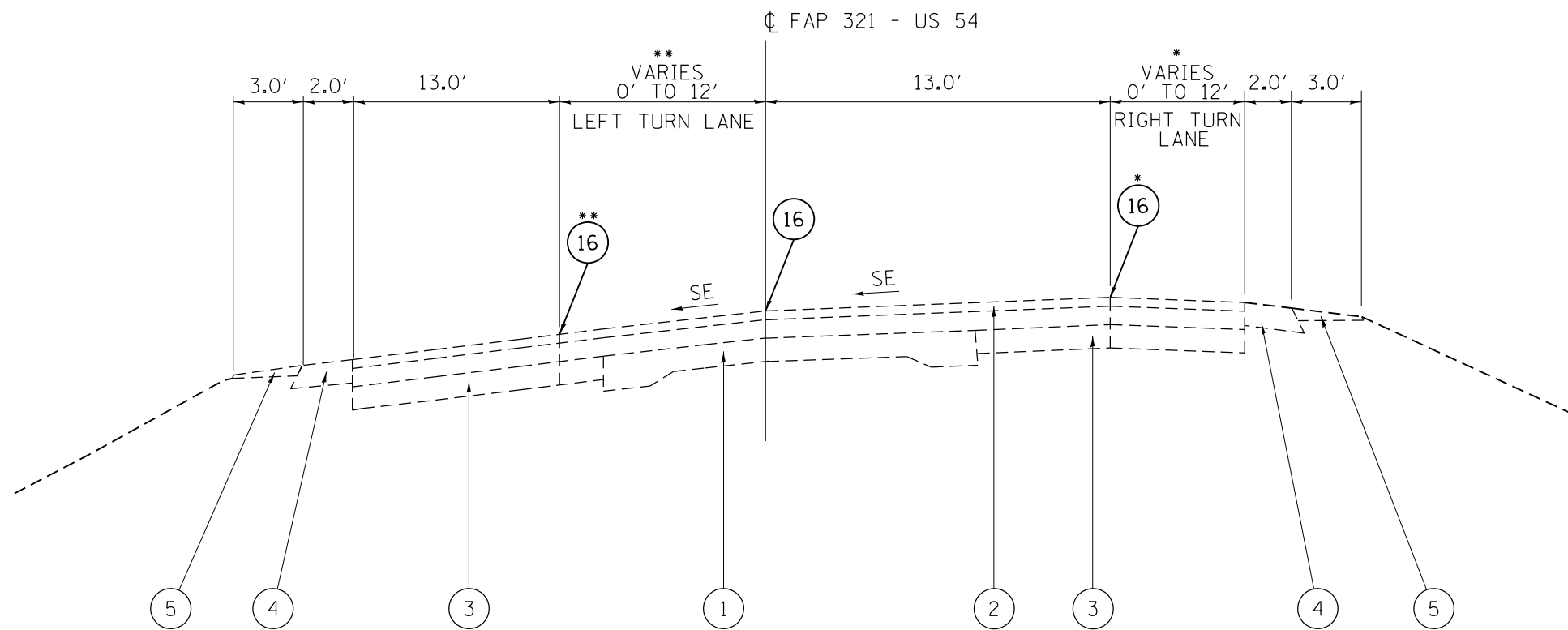
USER NAME = siefertca	DESIGNED -	REVISED -
	DRAWN -	REVISED -
PLOT SCALE = 80.0000 ' / in.	CHECKED -	REVISED -
PLOT DATE = 10/8/2020	DATE -	REVISED -

STATE OF ILLINOIS  
 DEPARTMENT OF TRANSPORTATION

TYPICAL SECTIONS

SCALE: N/A SHEET 3 OF 9 SHEETS STA. N/A TO STA. N/A

F.A.P. RTE.	SECTION	COUNTY	TOTAL SHEETS	SHEET NO.
321	(107) CJS	PIKE	17	6
CONTRACT NO. 72L92				
ILLINOIS FED. AID PROJECT				



FAP 321/ US 54

STA. 93+26.69 - 102+63.10, RIGHT, S.E. VARIES  
 STA. 93+26.09 - 102+75.10, LEFT, S.E. VARIES  
 STA. 215+72.10 - 225+74.01, S.E. = 4.6%

\*STA. 97+18.89 - 102+63.00  
 \*\*STA. 97+00.00 - 102+63.00

LEGEND

- ① EXISTING P.C.C. PAVEMENT - 9''-6''-9''
- ② EXISTING HMA SURF COURSE
- ③ EXISTING P.C.C./HMA BASE COURSE, VARIABLE DEPTH
- ④ EXISTING HMA SHOULDER
- ⑤ EXISTING AGGREGATE SHOULDER
- ⑥ EXISTING CONCRETE GUTTER
- ⑦ EXISTING SUB-SURFACE UNDERDRAIN (Ø=4'')
- ⑧ EXISTING TIE BAR (Ø=0.5'') @ 5' CENTERS
- ⑨ EXISTING LONGITUDINAL METAL JOINT
- ⑩ EXISTING EDGE BAR (Ø=0.75'') SMOOTH
- ⑪ EXISTING CONCRETE MEDIAN, TY C-4
- ⑫ EXISTING CONCRETE MEDIAN SURFACE, 4''
- ⑬ EXISTING CONCRETE CURB AND GUTTER, TYPE M-6.12
- ⑭ EXISTING HMA BASE COURSE, 10 3/4''
- ⑮ EXISTING SUBBASE GRANULAR MATERIAL, TYPE A, 4''
- ⑯ PROPOSED CRACK FILLING

MODEL: Default  
 FILE: Model\_C:\pub\harcross\data\illinois\pwr\DOT\Documents\DOT\_Offices\Dir\dtc\_6\Projects\0672192\Cadd\Drawings\0672192-911-typlcal.dgn

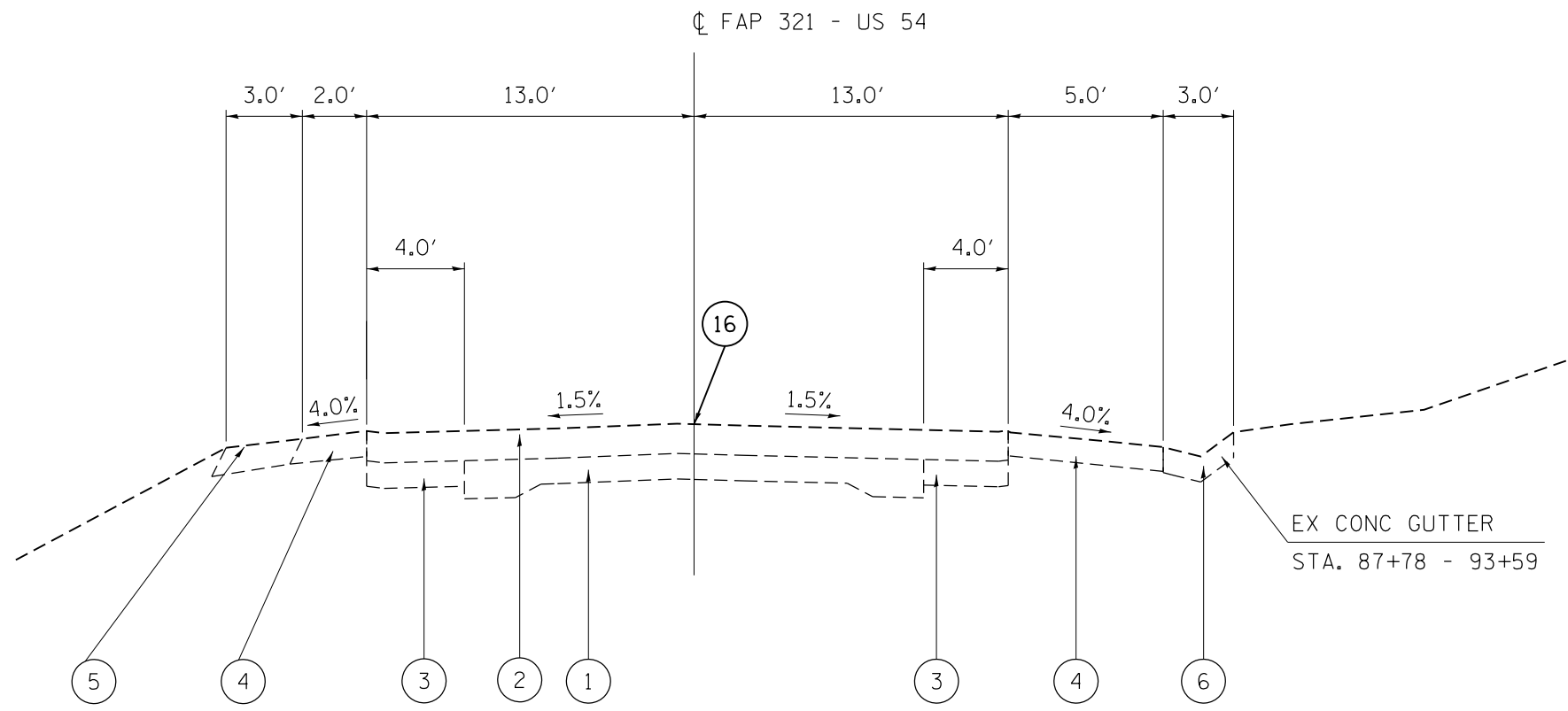
USER NAME = siefertca	DESIGNED -	REVISED -
	DRAWN -	REVISED -
PLOT SCALE = 80.0000 ' / in.	CHECKED -	REVISED -
PLOT DATE = 10/8/2020	DATE -	REVISED -

STATE OF ILLINOIS  
 DEPARTMENT OF TRANSPORTATION

TYPICAL SECTIONS

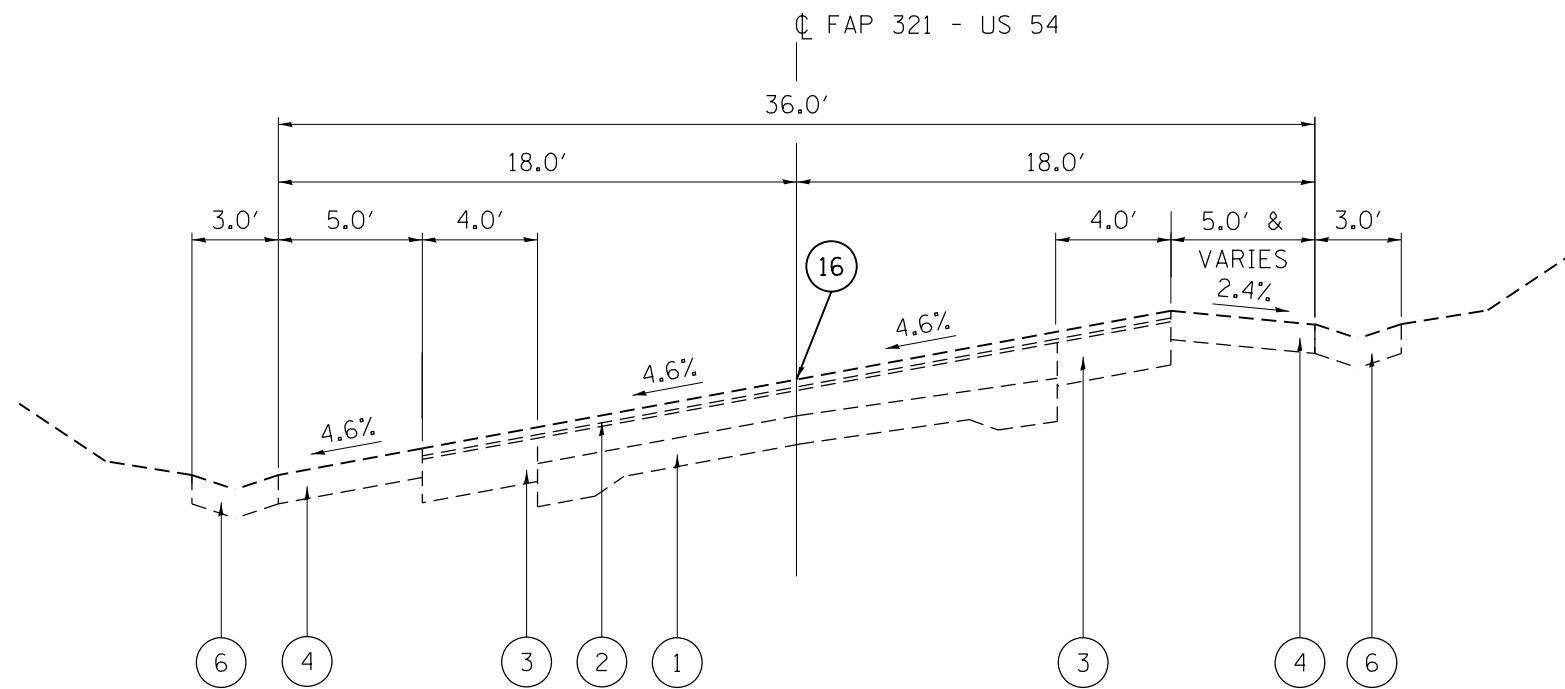
SCALE: N/A SHEET 4 OF 9 SHEETS STA. N/A TO STA. N/A

F.A.P. RTE.	SECTION	COUNTY	TOTAL SHEETS	SHEET NO.
321	(107) CJS	PIKE	17	7
CONTRACT NO. 72L92				
ILLINOIS FED. AID PROJECT				



FAP 321/ US 54

STA. 87+78.09 - 93+26.09



FAP 321/ US 54

STA. 225+74.01 - 232+36.51

**LEGEND**

- ① EXISTING P.C.C. PAVEMENT - 9''-6''-9''
- ② EXISTING HMA SURF COURSE
- ③ EXISTING P.C.C./HMA BASE COURSE, VARIABLE DEPTH
- ④ EXISTING HMA SHOULDER
- ⑤ EXISTING AGGREGATE SHOULDER
- ⑥ EXISTING CONCRETE GUTTER
- ⑦ EXISTING SUB-SURFACE UNDERDRAIN (Ø=4'')
- ⑧ EXISTING TIE BAR (Ø=0.5'') @ 5' CENTERS
- ⑨ EXISTING LONGITUDINAL METAL JOINT
- ⑩ EXISTING EDGE BAR (Ø=0.75'') SMOOTH
- ⑪ EXISTING CONCRETE MEDIAN, TY C-4
- ⑫ EXISTING CONCRETE MEDIAN SURFACE, 4''
- ⑬ EXISTING CONCRETE CURB AND GUTTER, TYPE M-6.12
- ⑭ EXISTING HMA BASE COURSE, 10 3/4''
- ⑮ EXISTING SUBBASE GRANULAR MATERIAL, TYPE A, 4''
- ⑯ PROPOSED CRACK FILLING

MODEL: Default  
 FILE: Model: P:\pub\lanroom.dwg  
 PLOT DATE: 10/8/2020

USER NAME = siefertca	DESIGNED -	REVISED -
	DRAWN -	REVISED -
PLOT SCALE = 80.0000 ' / in.	CHECKED -	REVISED -
PLOT DATE = 10/8/2020	DATE -	REVISED -

**STATE OF ILLINOIS  
DEPARTMENT OF TRANSPORTATION**

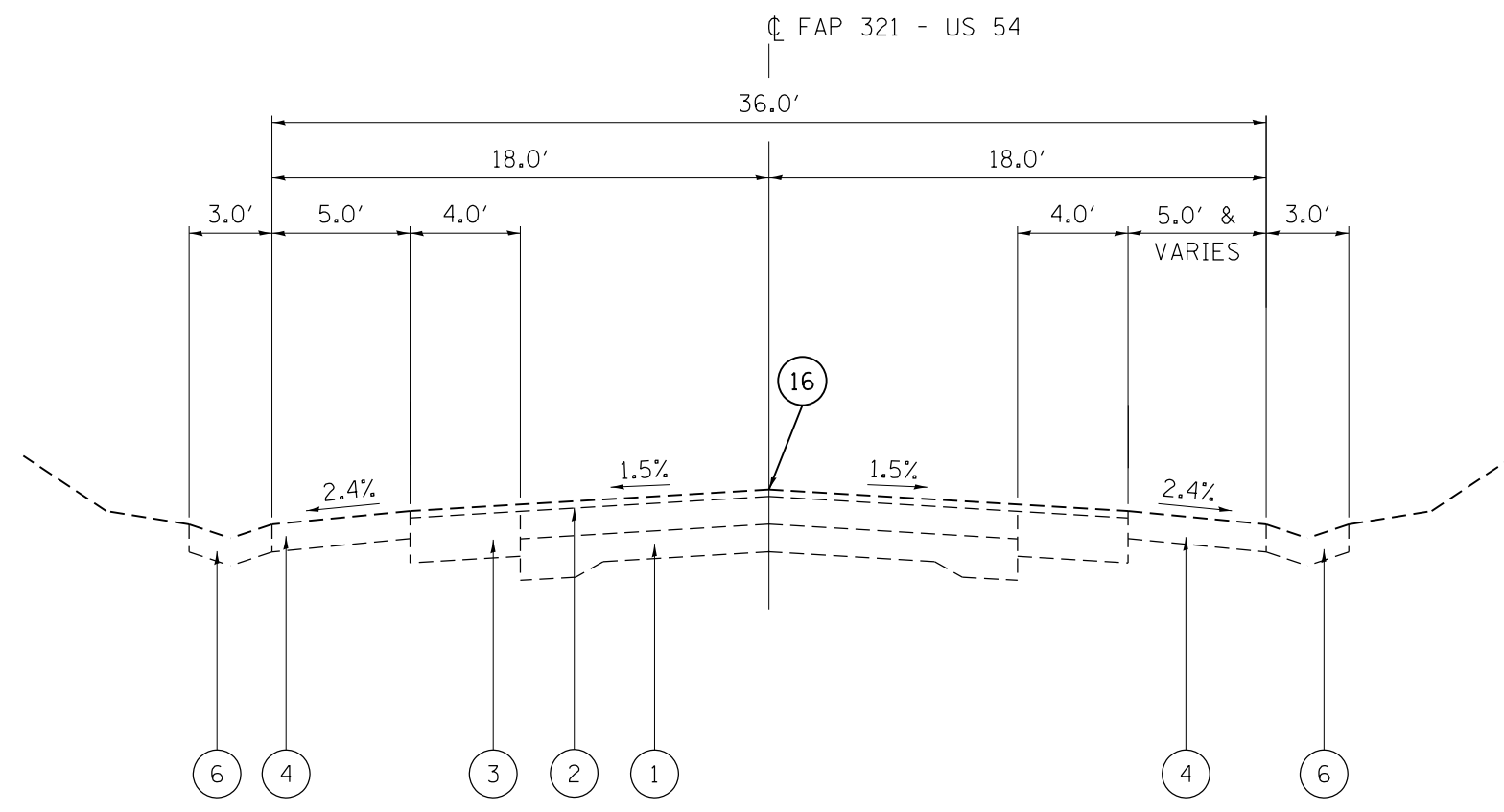
**TYPICAL SECTIONS**

SCALE: N/A SHEET 5 OF 9 SHEETS STA. N/A TO STA. N/A

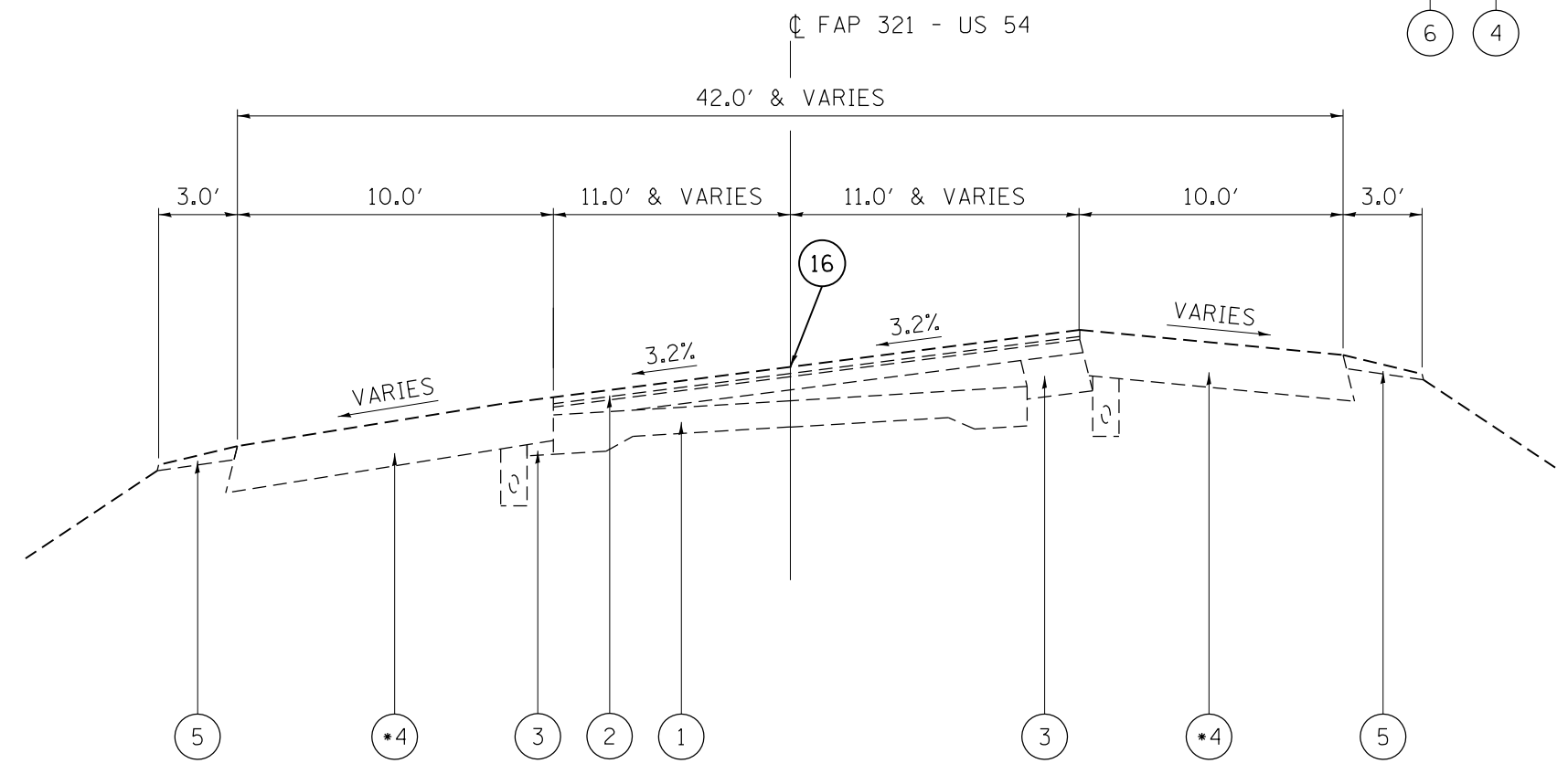
F.A.P. RTE.	SECTION	COUNTY	TOTAL SHEETS	SHEET NO.
321	(107) CJS	PIKE	17	8
CONTRACT NO. 72L92				
ILLINOIS FED. AID PROJECT				



MODEL: Default  
 FILE: Model - Proj\pub\arooms.dwg  
 PROJECT: 10/8/2020  
 USER: siefertca  
 DATE: 10/8/2020



FAP 321/ US 54  
 STA. 243+90.51 - 251+35.51



\* DEPTH VARIES (8" - 13")

\* DEPTH VARIES (8" - 13")

FAP 321/ US 54

STA. 255+68.29 - 262+54.14

**LEGEND**

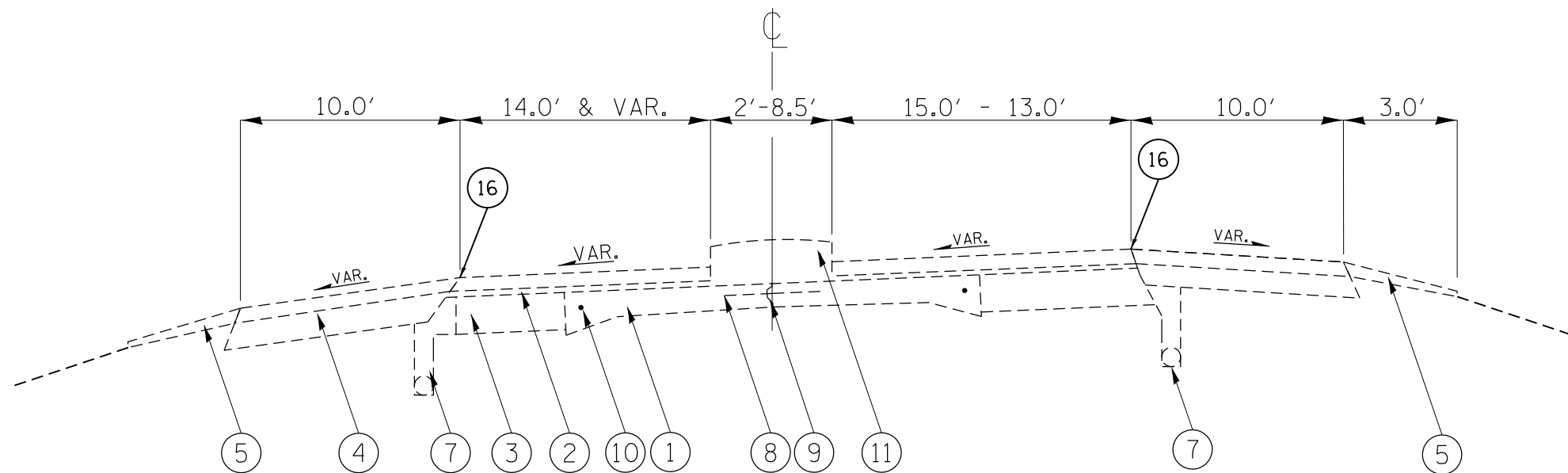
- ① EXISTING P.C.C. PAVEMENT - 9"-6"-9"
- ② EXISTING HMA SURF COURSE
- ③ EXISTING P.C.C./HMA BASE COURSE, VARIABLE DEPTH
- ④ EXISTING HMA SHOULDER
- ⑤ EXISTING AGGREGATE SHOULDER
- ⑥ EXISTING CONCRETE GUTTER
- ⑦ EXISTING SUB-SURFACE UNDERDRAIN (Ø=4")
- ⑧ EXISTING TIE BAR (Ø=0.5") @ 5' CENTERS
- ⑨ EXISTING LONGITUDINAL METAL JOINT
- ⑩ EXISTING EDGE BAR (Ø=0.75") SMOOTH
- ⑪ EXISTING CONCRETE MEDIAN, TY C-4
- ⑫ EXISTING CONCRETE MEDIAN SURFACE, 4"
- ⑬ EXISTING CONCRETE CURB AND GUTTER, TYPE M-6.12
- ⑭ EXISTING HMA BASE COURSE, 10 3/4"
- ⑮ EXISTING SUBBASE GRANULAR MATERIAL, TYPE A, 4"
- ⑯ PROPOSED CRACK FILLING

USER NAME = siefertca	DESIGNED -	REVISED -
PLOT SCALE = 80.0000' / in.	DRAWN -	REVISED -
PLOT DATE = 10/8/2020	CHECKED -	REVISED -
	DATE -	REVISED -

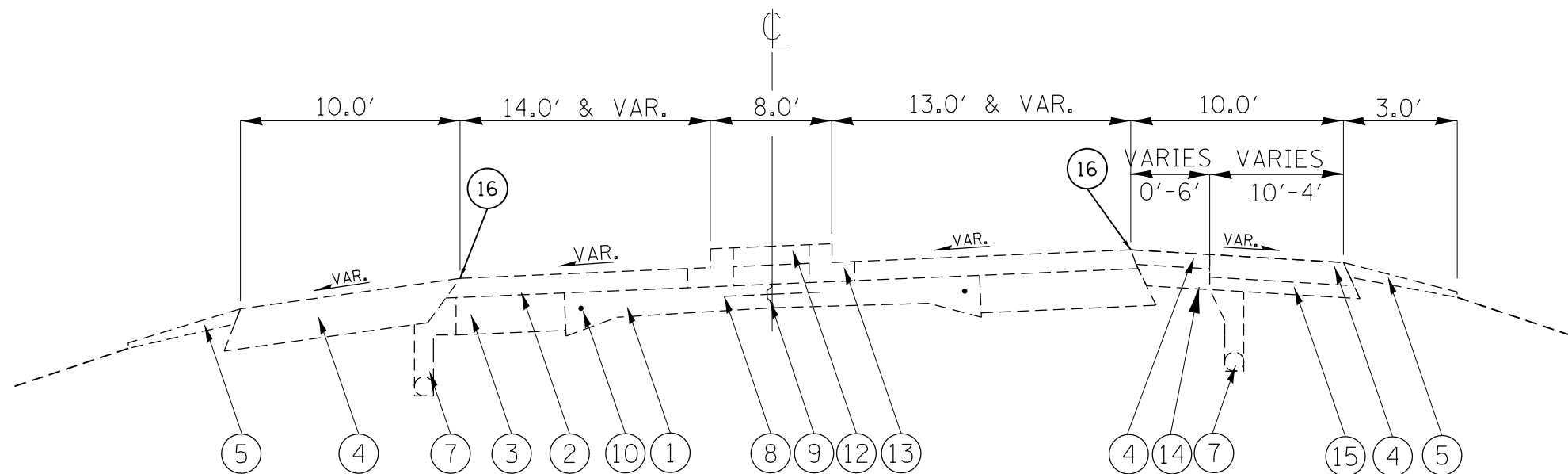
**STATE OF ILLINOIS  
 DEPARTMENT OF TRANSPORTATION**

<b>TYPICAL SECTIONS</b>	
SCALE: N/A	SHEET 6 OF 9 SHEETS
STA. N/A	TO STA. N/A

F.A.P. RTE. 321	SECTION (107) CJS	COUNTY PIKE	TOTAL SHEETS 17	SHEET NO. 9
CONTRACT NO. 72L92				
ILLINOIS FED. AID PROJECT				



FAP 321/ US 54  
STA 262+54.14 TO STA 263+65.75



FAP 321/ US 54  
STA 263+65.75 TO STA 265+00.18

**LEGEND**

- ① EXISTING P.C.C. PAVEMENT - 9"-6"-9"
- ② EXISTING HMA SURF COURSE
- ③ EXISTING P.C.C./HMA BASE COURSE, VARIABLE DEPTH
- ④ EXISTING HMA SHOULDER
- ⑤ EXISTING AGGREGATE SHOULDER
- ⑥ EXISTING CONCRETE GUTTER
- ⑦ EXISTING SUB-SURFACE UNDERDRAIN (Ø=4")
- ⑧ EXISTING TIE BAR (Ø=0.5") @ 5' CENTERS
- ⑨ EXISTING LONGITUDINAL METAL JOINT
- ⑩ EXISTING EDGE BAR (Ø=0.75") SMOOTH
- ⑪ EXISTING CONCRETE MEDIAN, TY C-4
- ⑫ EXISTING CONCRETE MEDIAN SURFACE, 4"
- ⑬ EXISTING CONCRETE CURB AND GUTTER, TYPE M-6.12
- ⑭ EXISTING HMA BASE COURSE, 10 3/4"
- ⑮ EXISTING SUBBASE GRANULAR MATERIAL, TYPE A, 4"
- ⑯ PROPOSED CRACK FILLING

MODEL: Default  
 FILE: Model: Project\p1000000.dwg  
 PROJECT: 06721921\_CADD\data\CAD\sheet\06721921-ht-typical.dwg

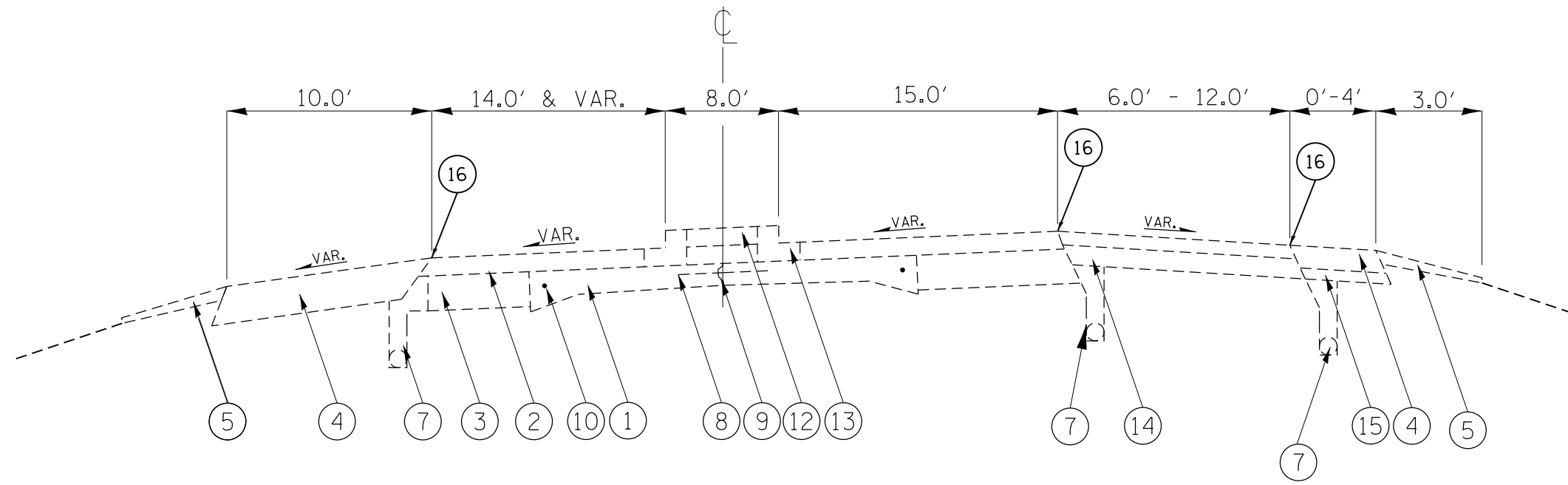
USER NAME = siefertca	DESIGNED -	REVISED -
	DRAWN -	REVISED -
PLOT SCALE = 80.0000' / in.	CHECKED -	REVISED -
PLOT DATE = 10/8/2020	DATE -	REVISED -

**STATE OF ILLINOIS  
DEPARTMENT OF TRANSPORTATION**

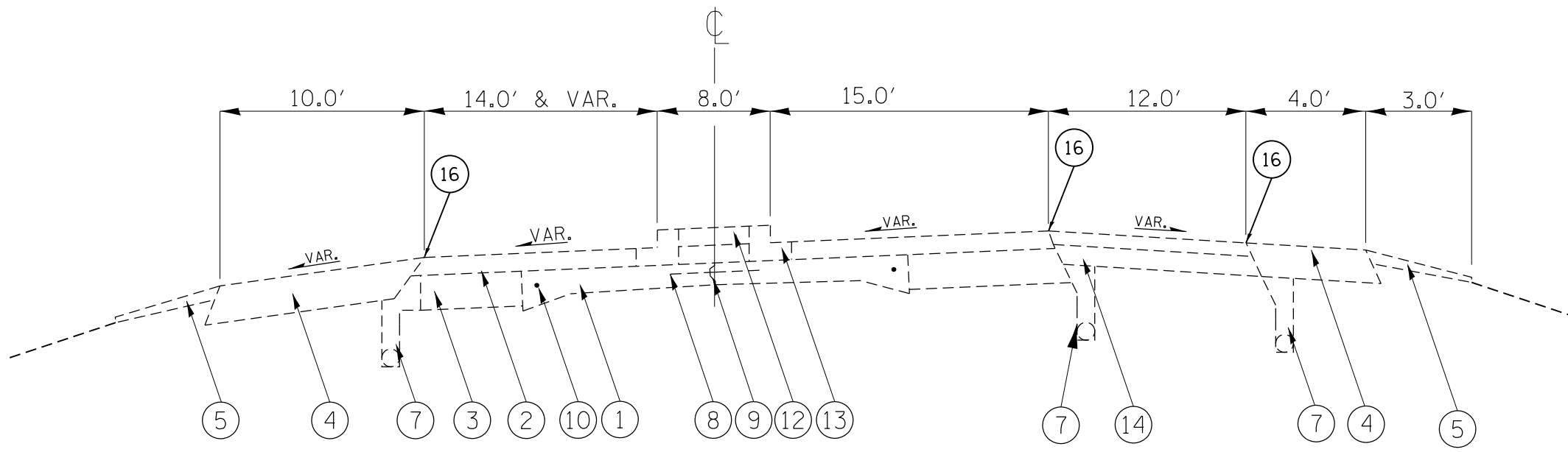
**TYPICAL SECTIONS**

SCALE: N/A SHEET 7 OF 9 SHEETS STA. N/A TO STA. N/A

F.A.P. RTE.	SECTION	COUNTY	TOTAL SHEETS	SHEET NO.
321	(107) CJS	PIKE	17	10
CONTRACT NO. 72L92				
ILLINOIS FED. AID PROJECT				



FAP 321/ US 54  
 STA 265+00.18 TO STA 266+05.75



FAP 321/ US 54  
 STA 266+05.75 TO STA 268+30.19

**LEGEND**

- ① EXISTING P.C.C. PAVEMENT - 9"-6"-9"
- ② EXISTING HMA SURF COURSE
- ③ EXISTING P.C.C./HMA BASE COURSE, VARIABLE DEPTH
- ④ EXISTING HMA SHOULDER
- ⑤ EXISTING AGGREGATE SHOULDER
- ⑥ EXISTING CONCRETE GUTTER
- ⑦ EXISTING SUB-SURFACE UNDERDRAIN (Ø=4")
- ⑧ EXISTING TIE BAR (Ø=0.5") @ 5' CENTERS
- ⑨ EXISTING LONGITUDINAL METAL JOINT
- ⑩ EXISTING EDGE BAR (Ø=0.75") SMOOTH
- ⑪ EXISTING CONCRETE MEDIAN, TY C-4
- ⑫ EXISTING CONCRETE MEDIAN SURFACE, 4"
- ⑬ EXISTING CONCRETE CURB AND GUTTER, TYPE M-6.12
- ⑭ EXISTING HMA BASE COURSE, 10 3/4"
- ⑮ EXISTING SUBBASE GRANULAR MATERIAL, TYPE A, 4"
- ⑯ PROPOSED CRACK FILLING

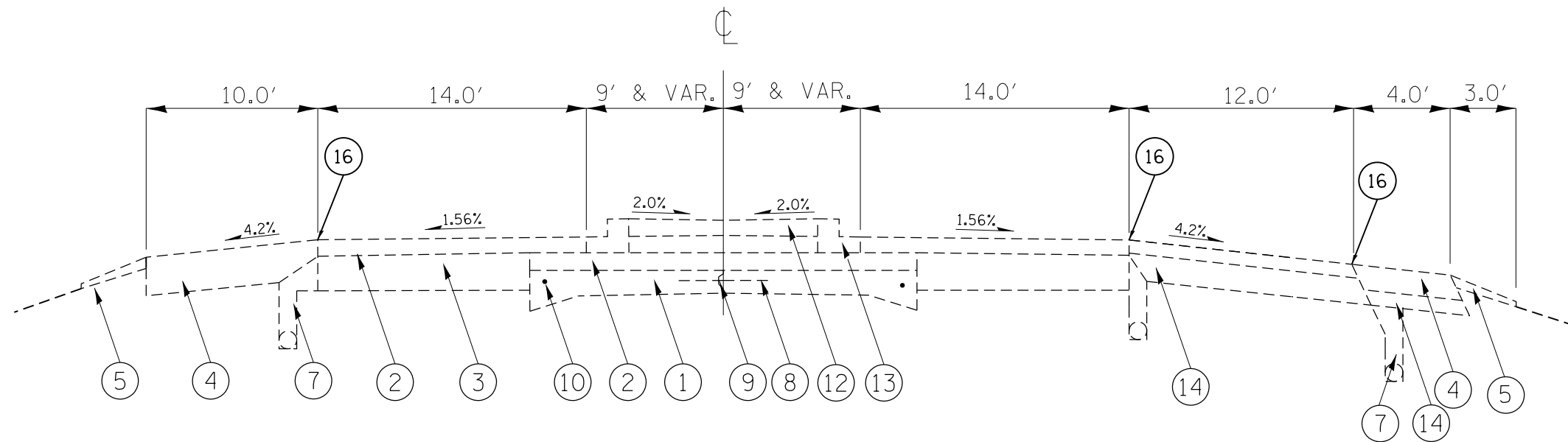
MODEL: Default  
 FILE: Model: P:\pub\lanroom.dwg  
 PROJECT: 06721921\_CADD\data\CAD\sheet\06721921\_rht\typical.dgn

USER NAME = siefertca	DESIGNED -	REVISED -
	DRAWN -	REVISED -
PLOT SCALE = 80.0000' / in.	CHECKED -	REVISED -
PLOT DATE = 10/8/2020	DATE -	REVISED -

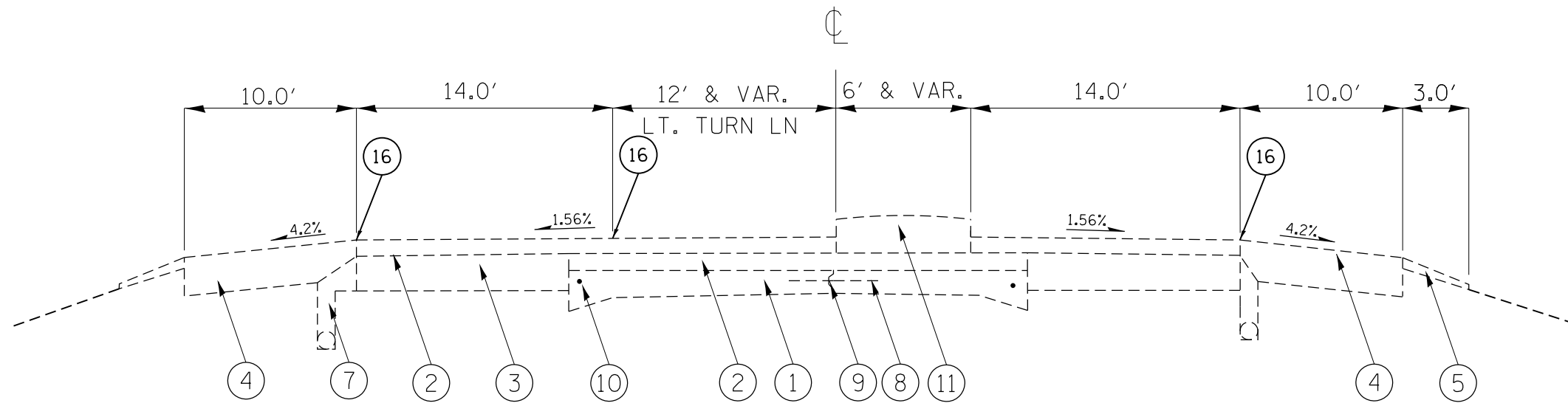
**STATE OF ILLINOIS  
 DEPARTMENT OF TRANSPORTATION**

<b>TYPICAL SECTIONS</b>	
SCALE: N/A	SHEET 8 OF 9 SHEETS
STA. N/A	TO STA. N/A

F.A.P. RTE. 321	SECTION (107) CJS	COUNTY PIKE	TOTAL SHEETS 17	SHEET NO. 11
CONTRACT NO. 72L92				
ILLINOIS FED. AID PROJECT				



FAP 321/ US 54  
 STA 268+30.19 TO STA 268+81.40 BK = STA 268+59.47 AHD



FAP 321/ US 54  
 STA 268+59.47 TO STA 272+02.70

**LEGEND**

- ① EXISTING P.C.C. PAVEMENT - 9"-6"-9"
- ② EXISTING HMA SURF COURSE
- ③ EXISTING P.C.C./HMA BASE COURSE, VARIABLE DEPTH
- ④ EXISTING HMA SHOULDER
- ⑤ EXISTING AGGREGATE SHOULDER
- ⑥ EXISTING CONCRETE GUTTER
- ⑦ EXISTING SUB-SURFACE UNDERDRAIN (Ø=4")
- ⑧ EXISTING TIE BAR (Ø=0.5") @ 5' CENTERS
- ⑨ EXISTING LONGITUDINAL METAL JOINT
- ⑩ EXISTING EDGE BAR (Ø=0.75") SMOOTH
- ⑪ EXISTING CONCRETE MEDIAN, TY C-4
- ⑫ EXISTING CONCRETE MEDIAN SURFACE, 4"
- ⑬ EXISTING CONCRETE CURB AND GUTTER, TYPE M-6.12
- ⑭ EXISTING HMA BASE COURSE, 10 3/4"
- ⑮ EXISTING SUBBASE GRANULAR MATERIAL, TYPE A, 4"
- ⑯ PROPOSED CRACK FILLING

MODEL: Default  
 FILE: Model: Project\planroom.dwg  
 PROJECT: 321 US 54  
 SHEET: 9 OF 9  
 DATE: 10/8/2020

USER NAME = siefertca	DESIGNED -	REVISED -
	DRAWN -	REVISED -
PLOT SCALE = 80.0000' / in.	CHECKED -	REVISED -
PLOT DATE = 10/8/2020	DATE -	REVISED -

**STATE OF ILLINOIS  
 DEPARTMENT OF TRANSPORTATION**

**TYPICAL SECTIONS**

SCALE: N/A SHEET 9 OF 9 SHEETS STA. N/A TO STA. N/A

F.A.P. RTE.	SECTION	COUNTY	TOTAL SHEETS	SHEET NO.
321	(107) CJS	PIKE	17	12
CONTRACT NO. 72L92				
ILLINOIS FED. AID PROJECT				

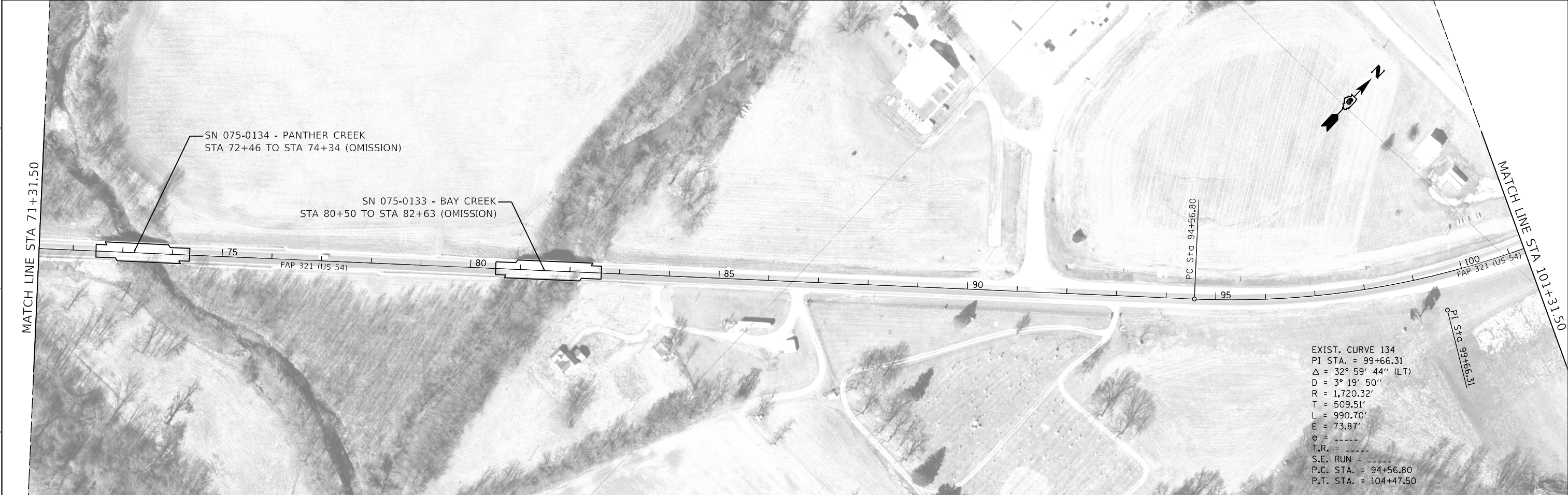
## CRACK FILLING SCHEDULE

STA.	STA.	LENGTH (FOOT)	NUMBER OF JOINTS	45100100 CRACK ROUTING (PAVEMENT) (FOOT)	45100200 CRACK FILLING (POUND)
<b>US 54</b>					
42+17.96	to 42+80.00	62	1		10
43+11.50	to 72+46.00	2,935	1		484
<b>SN 075-0134 - STA 72+46 TO STA 74+34</b>					
74+34.00	to 80+50.00	616	1		102
<b>SN 075-0133 - STA 80+50 TO STA 82+63</b>					
82+63.00	to 209+25.63	12,663	1		2,089
97+18.89	to 104+04.26	RIGHT TURN LANE	685	1	113
97+00.00	to 112+30.00	LEFT TURN LANE	1,530	1	252
209+00.02	to 238+62.00		2,962	1	489
<b>SN 075-0132 - STA 238+62 TO STA 239+95</b>					
239+95.00	to 253+44.10	BK	1,349	1	223
253+50.00	AHD to 262+54.14		904	1	149
262+54.14	to 265+00.18		246	3	122
265+00.18	to 272+02.70		703	3	348
<b>TRANS. CRACKS</b>					
* ESTIMATED - 100 CRACKS - SINGLE LANE		13		1,300	293
<b>TOTAL=</b>				<b>1,300</b>	<b>4,673</b>

\* TRANSVERSE CRACK QUANTITY PROVIDED AS AN ESTIMATE.  
ACTUAL LOCATIONS TO BE DETERMINED IN THE FIELD BY THE ENGINEER.

MODEL: Default  
 FILE: \\nrcs-pub\pubroom\dat\illinois\gov\PHWDOT\Documents\DOT\_Offices\Illintct\6\Projects\0672192\CaddData\CAD\Sheets\0672192-rht-sched.tbl.dgn

USER NAME = siefertca PLOT SCALE = 80,0000 ' / in. PLOT DATE = 10/8/2020	DESIGNED - DRAWN - CHECKED - DATE -	REVISED - REVISED - REVISED - REVISED -	<b>STATE OF ILLINOIS DEPARTMENT OF TRANSPORTATION</b>	<b>SCHEDULE OF QUANTITIES</b>	F.A.P. RTE. 321	SECTION (107) CJS	COUNTY PIKE	TOTAL SHEETS 17	SHEET NO. 13
				SCALE: N/A    SHEET 1 OF 1 SHEETS    STA. N/A TO STA. N/A	ILLINOIS FED. AID PROJECT    CONTRACT NO. 72L92				



MODEL: Default  
 FILE: \\nas01c.psu.edu\pub\baronm.d\at\illinois\pwr\DOT\Documents\DOT\_Offices\District\_6\Projects\0672192\CADD\Drawings\0672192-01-Plan.dwg

USER NAME = siefertca	DESIGNED -	REVISED -
DRAWN -	REVISED -	
PLOT SCALE = 200.0000' / in.	CHECKED -	REVISED -
PLOT DATE = 10/8/2020	DATE -	REVISED -

**STATE OF ILLINOIS  
DEPARTMENT OF TRANSPORTATION**

<b>PLAN SHEETS</b>	
<b>FAP 321 (US 54)</b>	
SCALE: 1" = 200'	SHEET 1 OF 4 SHEETS
STA. 41+00.00	TO STA. 101+31.50

F.A.P. RTE.	SECTION	COUNTY	TOTAL SHEETS	SHEET NO.
321	(107) CJS	PIKE	17	14
CONTRACT NO. 72L92				
ILLINOIS FED. AID PROJECT				



EXIST. CURVE 143  
 PI STA. = 157+94.79  
 $\Delta$  = 13° 46' 07" (LT)  
 D = 1° 18' 44"  
 R = 4,366.37'  
 T = 527.17'  
 L = 1,049.26'  
 E = 31.71'  
 e = ----  
 T.R. = ----  
 S.E. RUN = ----  
 P.C. STA. = 152+67.62  
 P.T. STA. = 163+16.88

MODEL: Default  
 FILE: ModelC\_Plan\planroom.dwg  
 PROJECT: \p\107\CJS\DOT\Documents\DOT\_Offices\Director @Projects\0672192\CADD\data\CAD\sheet\0672192-107-1.dwg

USER NAME = siefertca	DESIGNED -	REVISED -
PLOT SCALE = 200.0000' / in.	DRAWN -	REVISED -
PLOT DATE = 10/8/2020	CHECKED -	REVISED -
	DATE -	REVISED -

**STATE OF ILLINOIS  
 DEPARTMENT OF TRANSPORTATION**

<b>PLAN SHEETS</b>			
<b>FAP 321 (US 54)</b>			
SCALE: 1" = 200'	SHEET 2	OF 4 SHEETS	STA. 101+31.50 TO STA. 161+31.50

F.A.P. RTE.	SECTION	COUNTY	TOTAL SHEETS	SHEET NO.
321	(107) CJS	PIKE	17	15
CONTRACT NO. 72L92				
ILLINOIS FED. AID PROJECT				



MODEL: Default  
 FILE: \\nas01\pub\baronm\ad\illinois\pwr\PROJECTS\DOT\Office\Director\Projects\DOT\CADD\DATA\CAD\Sheets\0672192-274thLn.dwg

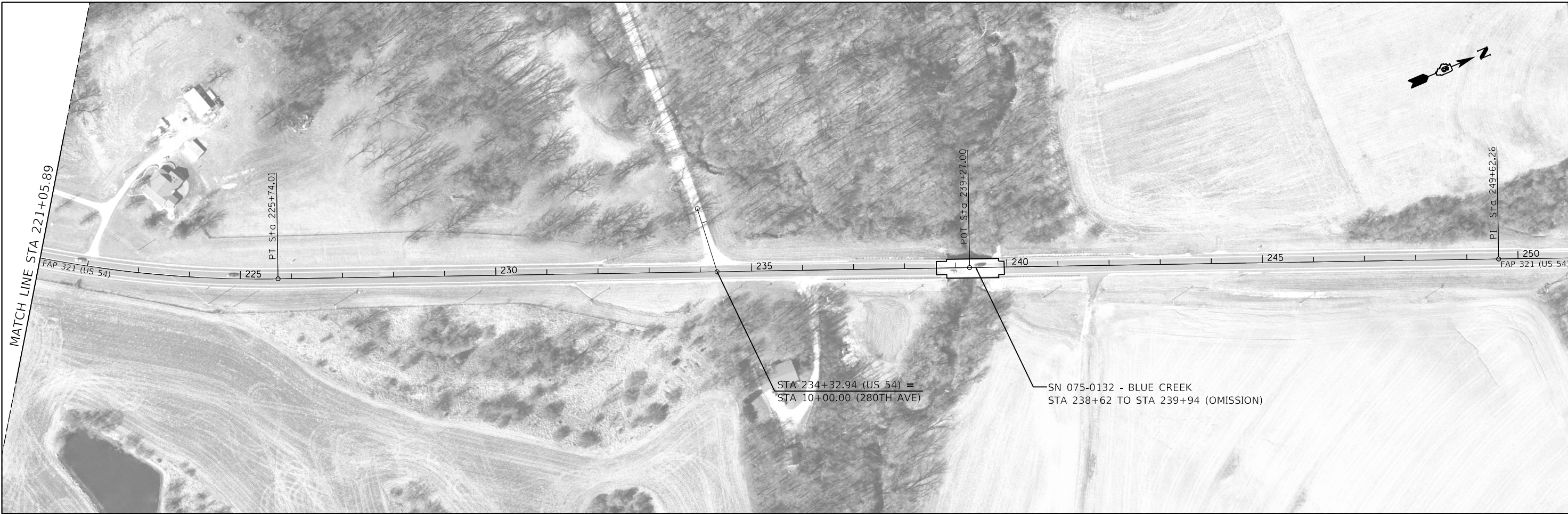
USER NAME = siefertca	DESIGNED -	REVISED -
PLOT SCALE = 200.0000' / in.	DRAWN -	REVISED -
PLOT DATE = 10/8/2020	CHECKED -	REVISED -
	DATE -	REVISED -

**STATE OF ILLINOIS**  
**DEPARTMENT OF TRANSPORTATION**

<b>PLAN SHEETS</b> <b>FAP 321 (US 54)</b>			
SCALE: 1" = 200'	SHEET 3	OF 4 SHEETS	STA. 161+31.50 TO STA. 221+05.89

F.A.P. RTE.	SECTION	COUNTY	TOTAL SHEETS	SHEET NO.
321	(107) CJS	PIKE	17	16
CONTRACT NO. 72L92				
ILLINOIS FED. AID PROJECT				





EXIST. CURVE 6  
 PI STA. = 260+80.10  
 $\Delta$  = 12° 47' 06" (LT)  
 D = 1° 15' 15"  
 R = 4,568.24'  
 T = 511.81'  
 L = 1,019.37'  
 E = 28.58'  
 e = -----  
 T.R. = -----  
 S.E. RUN = -----  
 P.C. STA. = 255+68.29  
 P.T. STA. = 265+87.66

ELEVATION:  
 Sta 253+44.10 BK =  
 Sta 253+50.00 AH =

PI Sta 260+80.10

ELEVATION:  
 Sta 268+81.40 BK =  
 Sta 268+59.47 AH =

END SECTION  
 (107) CJS  
 STA 272+02.70

MODEL: Default  
 FILE: Model: 20240808.dwg  
 PROJECT: 20240808.dwg  
 USER: siefertca  
 DATE: 10/8/2020

USER NAME = siefertca	DESIGNED -	REVISED -
	DRAWN -	REVISED -
PLOT SCALE = 200.0000' / in.	CHECKED -	REVISED -
PLOT DATE = 10/8/2020	DATE -	REVISED -

**STATE OF ILLINOIS  
 DEPARTMENT OF TRANSPORTATION**

<b>PLAN SHEETS</b>	
<b>FAP 321 (US 54)</b>	
SCALE: 1" = 200'	SHEET 4 OF 4 SHEETS
STA. 221+05.89 TO STA. 280+89.86	

F.A.P. RTE.	SECTION	COUNTY	TOTAL SHEETS	SHEET NO.
321	(107) CJS	PIKE	17	17
CONTRACT NO. 72L92				
ILLINOIS FED. AID PROJECT				