

STATE OF ILLINOIS
DEPARTMENT OF TRANSPORTATION

FAI ROUTE	SECTION	COUNTY	TOTAL SHEETS	SHEET NO.
55	(84-4 B) PCC	SANGAMON	18	1
		ILLINOIS	CONTRACT NO. 72L94	

FOR INDEX OF SHEETS, SEE SHEET NO. 2

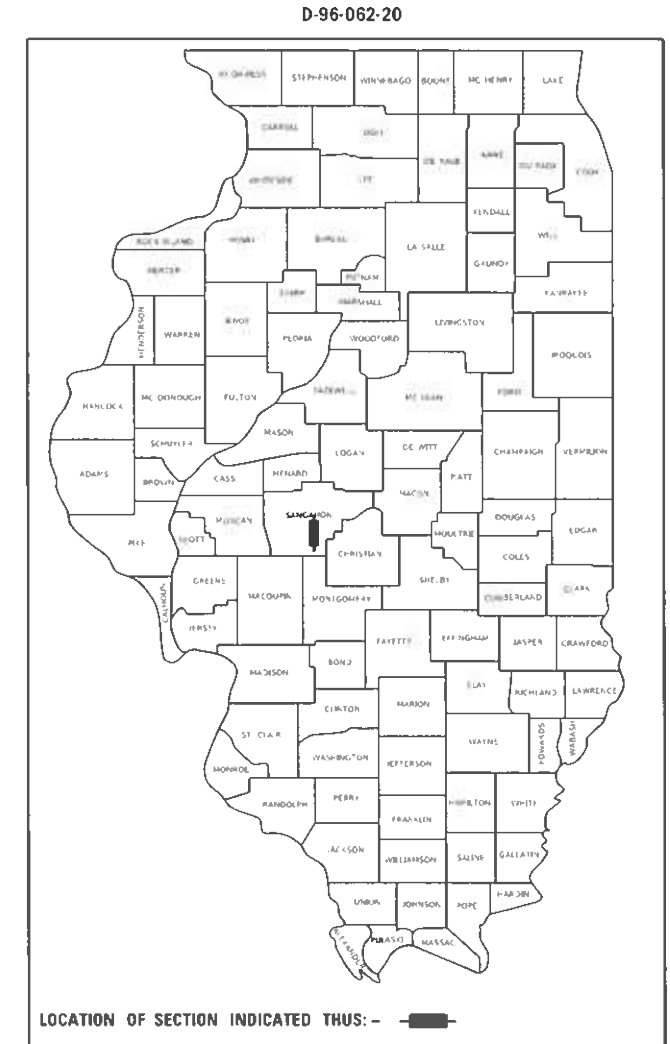
HIGHWAY STANDARDS

000001-08	631011-10	701401-12	701901-08
001006	631031-17	701411-09	725001-01
610001-09	701101-05	701426-09	780001-05
630001-12	701106-02	701428-01	781001-04
630301-09	701400-10	701446-11	782006-01

PROPOSED
HIGHWAY PLANS

FAI ROUTE 55 (I-55)
SECTION (84-4 B) PCC
PROJECT NHPP-A1FS(195)
RESURFACING
SANGAMON COUNTY

C-96-092-20



TRAFFIC DATA

I-55

FC: INTERSTATE

ADT	= 41,400	(2019)
P.V.	= 33,373	(80.61%)
S.U.	= 1,027	(2.48%)
M.U.	= 7,001	(16.91%)

STATE OF ILLINOIS
DEPARTMENT OF TRANSPORTATION

SUBMITTED OCTOBER 15 2020

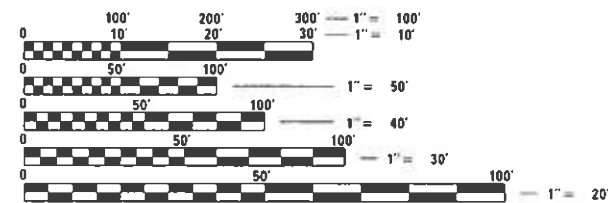
Jeffrey P. Meyer
REGIONAL ENGINEER

December 4, 2020

Scott A. Etk
ENGINEER OF DESIGN AND ENVIRONMENT

December 4, 2020

James J. Gu
DIRECTOR OF HIGHWAYS PROJECT IMPLEMENTATION

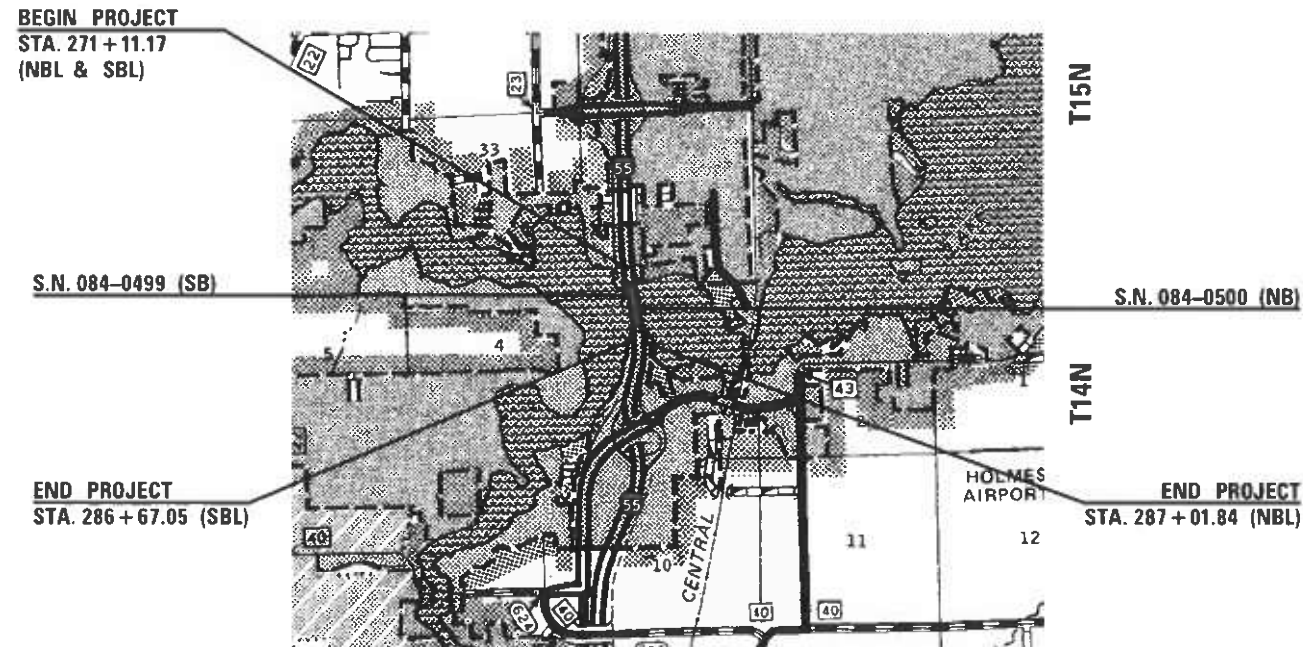


FULL SIZE PLANS HAVE BEEN PREPARED USING STANDARD ENGINEERING SCALES. REDUCED SIZED PLANS WILL NOT CONFORM TO STANDARD SCALES. IN MAKING MEASUREMENTS ON REDUCED PLANS, THE ABOVE SCALES MAY BE USED.

J.U.L.I.E.
JOINT UTILITY LOCATION INFORMATION FOR EXCAVATORS
1-800-892-0123
OR 811

PROJECT ENGINEER JON KELLEY 217-785-2739
PROJECT MANAGER ED KERN 217-524-7547

CONTRACT NO. 72L94



GROSS LENGTH = 1590.67 FT. = 0.30 MILE
NET LENGTH = 868.11 FT. = 0.16 MILE

PRINTED BY THE AUTHORITY
OF THE STATE OF ILLINOIS

GENERAL NOTES

1. ALL ELEVATIONS REFER TO U.S.G.S. MEAN SEA LEVEL DATUM.
2. UNLESS NOTED OTHERWISE, STATIONS AND OFFSETS REFER TO CENTERLINE OF PROJECT.
3. PROPOSED SUPERELEVATIONS SHOWN IN THE TYPICAL SECTIONS ARE REFERENCED FROM EXISTING PLANS AND SHALL MATCH EXISTING PAVEMENT GRADES AND TRANSITIONS. THE ENGINEER SHALL FIELD VERIFY ALL EXISTING SUPERELEVATIONS.
4. RAISED REFLECTIVE PAVEMENT MARKERS INSTALLED INTO THE ORIGINAL CONCRETE PAVEMENT MAY NOT HAVE BEEN REMOVED WHEN THE PAVEMENT WAS RESURFACED. ANY MARKERS FOUND IN THE ORIGINAL CONCRETE WILL BE REMOVED AND PAID FOR AS RAISED REFLECTIVE PAVEMENT MARKER REMOVAL.
5. REMOVED GUARDRAIL THAT IS NOT REPLACED ON THE SAME DAY MUST BE DELINEATED WITH LIGHTED BARRICADES. NO LOCATIONS WILL BE LEFT WITHOUT EITHER LIGHTED BARRICADES OR RESTORED GUARDRAIL AT ANY TIME.
6. ALL GUARDRAIL SHALL HAVE A PRELIMINARY LAYOUT. GUARDRAIL POSTS SHALL BE ADJUSTED SO AS TO MISS ANY SHOULDER DRAINS, INLETS, PIPE CULVERTS, STORM SEWER OR ANY OTHER HAZARD THAT MAY INTERFERE WITH GUARDRAIL CONSTRUCTION.

INDEX OF SHEETS

- 1 COVER SHEET
- 2 GENERAL NOTES, INDEX OF SHEETS, MIXTURE REQUIREMENTS
- 3-4 SUMMARY OF QUANTITIES
- 5 TYPICAL SECTION
- 6-7 SCHEDULE OF QUANTITIES
- 8-9 I-55 PLAN SHEETS
- 10-11 I-55 PROFILES
- 12-13 GUARDRAIL LON SHEETS
- 14-18 PROJECT DETAIL SHEETS

MIXTURES TABLE

Mixture Number	1	2	3	4
Mixture Use(s)	I-55 Mainline HMA Binder	I-55 Mainline HMA Surface	I-55 Shoulder Bottom Lift	I-55 Shoulder Top Lift
PG	SBS PG 76-22	SBS PG 76-22	SBS PG 76-22	SBS PG 76-22
Design Air Voids	4% @ N90	4% @ N90	4% @ N90	4% @ N90
Mixture Composition	IL-9.5	IL-9.5	IL-9.5	IL-9.5
Friction Aggregate	N/A	MIX "E"	N/A	MIX "E"
Quality Management	QC/QA	QC/QA	QC/QA	QC/QA
Sublot Size	N/A	N/A	N/A	N/A
Mixture Weights	112 lb/sy*in	112 lb/sy*in	112 lb/sy*in	112 lb/sy*in

COMMITMENTS:

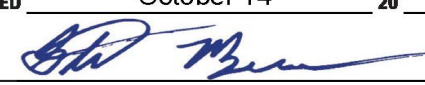
THERE ARE NO COMMITMENTS ON THIS PROJECT.

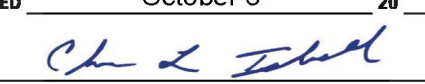
RATES OF APPLICATION

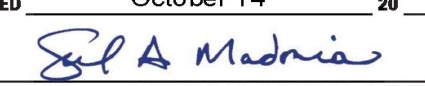
THE FOLLOWING RATES OF APPLICATION HAVE BEEN USED IN CALCULATING PLAN QUANTITIES:

AGGREGATE SHOULDERS	1.60	TONS/CU YD
BITUMINOUS MATERIAL - TACK COAT (EXIST. HMA, MILLED SURFACE, CONC.)	0.05	LB/SQ.FT.
BITUMINOUS MATERIAL - TACK COAT (BETWEEN HMA LIFTS)	0.025	LB/SQ.FT.
HMA SURFACE COURSE	0.056	TONS/SQ YD*IN
HMA BINDER COURSE	0.056	TONS/SQ YD*IN

**STATE OF ILLINOIS
DEPARTMENT OF TRANSPORTATION
DIVISION OF HIGHWAYS
DISTRICT 6**

EXAMINED October 14 2020

ENGINEER OF OPERATIONS

EXAMINED October 6 2020

ENGINEER OF PROJECT IMPLEMENTATION

EXAMINED October 14 2020

ENGINEER OF PROGRAM DEVELOPMENT

MOE:\1\Default...
 FILE NAME: ...
 PROJECT: ...
 OFFICE: ...
 DATE: ...

PPS# 6-01450-0000

90% FED
10% State

ROADWAY

0005

URBAN

CODE NO.	ITEM	UNIT	TOTAL QUANTITY	
70100800	TRAFFIC CONTROL AND PROTECTION, STANDARD 701401	L SUM	1	1
70100815	TRAFFIC CONTROL AND PROTECTION, STANDARD 701446	L SUM	1	1
70107025	CHANGEABLE MESSAGE SIGN	CAL DA	20	20
70200100	NIGHTTIME WORK ZONE LIGHTING	L SUM	1	1
70300100	SHORT TERM PAVEMENT MARKING	FOOT	953	953
70300150	SHORT TERM PAVEMENT MARKING REMOVAL	SQ FT	318	318
* 72501000	TERMINAL MARKER - DIRECT APPLIED	EACH	2	2
* 78009005	MODIFIED URETHANE PAVEMENT MARKING - LINE 5"	FOOT	4,254	4,254
* 78100100	RAISED REFLECTIVE PAVEMENT MARKER	EACH	43	43
* 78200005	GUARDRAIL REFLECTORS, TYPE A	EACH	32	32
78300200	RAISED REFLECTIVE PAVEMENT MARKER REMOVAL	EACH	43	43
X0931400	INLET BOXES TO BE ADJUSTED (SPECIAL)	EACH	10	10
X4401198	HOT-MIX ASPHALT SURFACE REMOVAL, VARIABLE DEPTH	SQ YD	11,343	11,343
* X7830072	GROOVING FOR RECESSED PAVEMENT MARKING 6"	FOOT	4,254	4,254
Z0013798	CONSTRUCTION LAYOUT	L SUM	1	1

* SPECIALTY ITEM

PPS# 6-01450-0000

90% FED
10% State

ROADWAY

0005

URBAN

CODE NO.	ITEM	UNIT	TOTAL QUANTITY	
Z0033700	LONGITUDINAL JOINT SEALANT	FOOT	3,403	3,403
∅ Z0076600	TRAINEES	HOUR	500	500
Z0034105	MATERIAL TRANSFER DEVICE	TON	1,341	1,341
∅ Z0076604	TRAINEES TRAINING PROGRAM GRADUATE	HOUR	500	500
Z0041895	POLYMER CONCRETE	CU FT	159.7	159.7

∅ 0042

REV. - MS

MODEL: Default
 FILE NAME: p:\pub\arcom.dwg
 I:\bids\pcc\72L94\CADD\Drawings\DOT Office\Drawings\DOT Documents\72L94\CADD\Drawings\DOT Office\Drawings\72L94-PT-500.dwg

USER NAME = blakleyba	DESIGNED -	REVISED -
	DRAWN -	REVISED -
PLOT SCALE = 100.0000' / in.	CHECKED -	REVISED -
PLOT DATE = 10/16/2020	DATE -	REVISED -

STATE OF ILLINOIS
DEPARTMENT OF TRANSPORTATION

SUMMARY OF QUANTITIES

SCALE: SHEET OF SHEETS STA. TO STA.

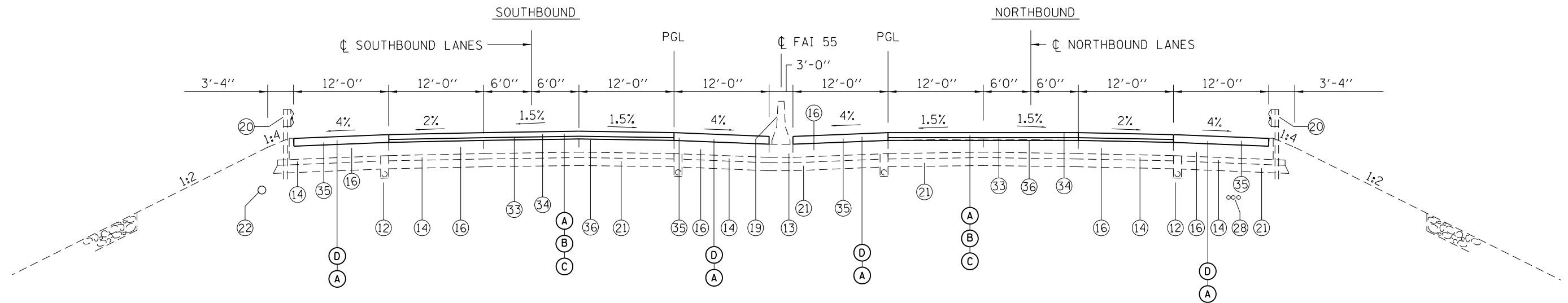
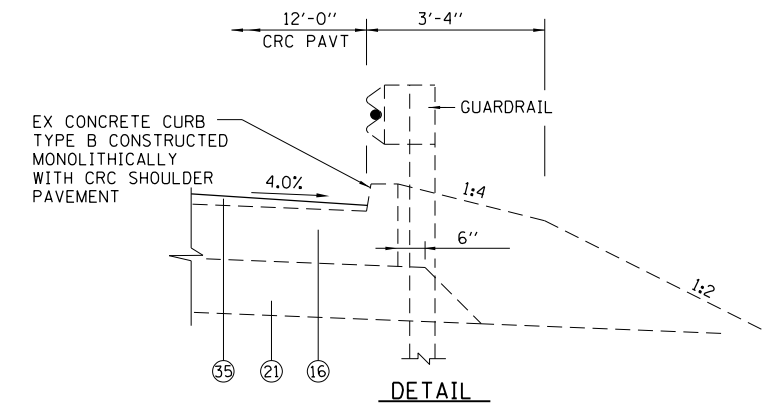
F.A.I. RTE.	SECTION	COUNTY	TOTAL SHEETS	SHEET NO.
55	(84-4 B) PCC	SANGAMON	18	4
CONTRACT NO. 72L94				
ILLINOIS FED. AID PROJECT				

EXISTING LEGEND

- ⑫ PIPE UNDERDRAINS 100 mm
- ⑬ PORTLAND CEMENT CONCRETE SHOULDERS - 290 mm
- ⑭ STABILIZED SUB-BASE 100 mm
- ⑮ CONTINUOUSLY REINFORCED PORTLAND CEMENT CONCRETE PAVEMENT 290 mm
- ⑰ CONCRETE BARRIER
- ⑱ STEEL PLATE BEAM GUARDRAIL
- ⑲ SUB-BASE GRANULAR MATERIAL TYPE B 300 mm
- ⑳ DUCTILE WATER MAIN 600 mm
- ㉑ ELECTRICAL CONDUIT
- ㉒ LEVELING BINDER (1" + VARIES)
- ㉓ BITUMINOUS SURFACE COURSE (1.5")
- ㉔ BITUMINOUS SURFACE COURSE (VARIABLE DEPTH)
- ㉕ PORTLAND CEMENT CONCRETE SURFACE REMOVAL (VARIABLE DEPTH)

PROPOSED LEGEND

- Ⓐ PROP. HMA SURFACE REMOVAL, VARIABLE DEPTH
- Ⓑ PROP. POLY HMA BINDER COURSE IL-9.5, N90, VARIABLE THICKNESS
- Ⓒ PROP. POLY HMA SURF. CSE., IL-9.5, MIX 'E', N90 1 1/2"
- Ⓓ PROP. HMA SHOULDERS



SB FAI-55
 271+11.17 TO 274+39.49
 OMISSION S.N. 084-0499
 281+62.05 TO 286+67.05

NB FAI-55
 STA 271+11.17 TO 274+39.49
 OMISSION S.N. 084-0500
 281+62.05 TO 287+01.84

**EXISTING HMA CORES
 FROM DISTRICT 6 MATERIALS
 (ALL CORES TAKEN IN OUTSIDE DRIVING LANE)**

CORE	HMA THICKNESS (IN)	CORE	HMA THICKNESS (IN)
NB-N1 198' N of N ABUT	3-1/4	SB-N1 198' N of N ABUT	2-3/4
NB-N2 172' N of N ABUT	3	SB-N2 172' N of N ABUT	2-7/8
NB-N3 92' N of N ABUT	3-1/4	SB-N3 92' N of N ABUT	2-3/8
NB-N4 66' N of N ABUT	3-7/8	SB-N4 66' N of N ABUT	2-1/2
NB-S5 84' S of S ABUT	3-1/2	SB-S5 84' S of S ABUT	3-1/2
NB-S6 110' S of S ABUT	3-1/2	SB-S6 110' S of S ABUT	3-1/2
NB-S7 243' S of S ABUT	4	SB-S7 243' S of S ABUT	3-7/8
NB-S8 269' S of S ABUT	3-3/4	SB-S8 269' S of S ABUT	3-3/8
NB-S9 348' S of S ABUT	4-1/4	SB-S9 348' S of S ABUT	3-3/8
NB-S10 401' S of S ABUT	3-1/2	SB-S10 401' S of S ABUT	3-1/4
NB-S11 428' S of S ABUT	2-1/4	SB-S11 428' S of S ABUT	3

M:\E:_Default\proj\p1000000.dwg
 FILE NAME: p1000000.dwg
 PROJECT: I:\Projects\DOT\Documents\DOT_Offices\District 6\Projects\084\084-0499\084-0499-01\Typical.dwg

USER NAME = blakleyba	DESIGNED -	REVISED -
	DRAWN -	REVISED -
PLOT SCALE = 100.0000' / in.	CHECKED -	REVISED -
PLOT DATE = 10/16/2020	DATE -	REVISED -

**STATE OF ILLINOIS
 DEPARTMENT OF TRANSPORTATION**

TYPICAL SECTION

SCALE: SHEET OF SHEETS STA. TO STA.

F.A.I. RTE.	SECTION	COUNTY	TOTAL SHEETS	SHEET NO.
55	(84-4 B) PCC	SANGAMON	18	5
CONTRACT NO. 72L94				
ILLINOIS FED. AID PROJECT				

MILLING & PAVING

*

LOCATION	PAVT WIDTH (FEET)	SHLDR WIDTH (FEET)	X4401198	40600295	40603209	SURFACE THICKNESS (INCHES)	40604174	48203100	Z0033700	Z0034105		
			HMA	POLY BIT	POLY		POLY HMA	HMA	LONGITUDINAL	MATERIAL		
			SURFACE REMOVAL	MATERIALS (TACK COAT)	HMA		SC IL - 9.5	SHLDRS	JOINT	TRANSFER		
			VAR DEPTH (SQ YDS)	(2 APPLICATIONS) (POUND)	BC IL - 9.5 N90		MIX 'E' N90	SEALANT	DEVICE			
			(SQ YDS)	(POUND)	(TON)	(INCHES)	(TON)	(TON)	(FOOT)	(TON)		
SB I - 55												
STA	TO	STA										
271+11.17	TO	274+39.49	36	24	2,188.80	1,477.44	162.16	1.5	110.32	181.65	656.64	272.48
OMISSION SN 084-0499												
281+62.05	TO	286+67.05	36	24	3,366.67	2,272.50	249.43	1.5	169.68	279.41	1,010.00	419.11
NB I - 55												
STA	TO	STA										
271+11.17	TO	274+39.49	36	24	2,188.80	1,477.44	135.14	1.5	110.32	163.63	656.64	245.45
OMISSION SN 084-0500												
281+62.05	TO	287+01.84	36	24	3,598.60	2,429.06	222.18	1.5	181.37	269.03	1,079.58	403.55
TOTAL					11,342.87	7,656.44	768.91		571.68	893.73	3,402.86	1,340.59

NOTE: 5% INCREASE ADDED TO BINDER COARSE & BOTTOM LIFT OF SHOULDERS DUE TO SURFACE VARIATIONS

* LJS TO BE PLACED AT THE LANE LINES ONLY, BETWEEN THE BINDER AND SURFACE LIFTS

I - 55 - SHORT TERM PAVEMENT MARKING, LINE - 4" & REMOVAL

LOCATION	70300100			70300150		
	INSIDE	OUTSIDE	CENTERLINE	REMOVAL		
	EDGE LINE	EDGE LINE	SKIP DASH			
	YELLOW	WHITE	WHITE			
(FOOT)	(FOOT)	(FOOT)	(SQ FT)			
SB I - 55						
STA	TO	STA				
271+11.17	TO	274+39.49	26.3	26.3	131.3	61.3
OMISSION SN 084-0499						
281+62.05	TO	286+67.05	40.4	40.4	202.0	94.3
NB I - 55						
STA	TO	STA				
271+11.17	TO	274+39.49	26.3	26.3	131.3	61.3
OMISSION SN 084-0500						
281+62.05	TO	287+01.84	43.2	43.2	215.9	100.8
TOTAL					952.8	317.6

I - 55 MAINLINE STRIPING

LOCATION	78009005			X7830072		
	MODIFIED	MODIFIED	MODIFIED	GROOVING		
	URETHANE	URETHANE	URETHANE	FOR		
	PAVT MKG	PAVT MKG	PAVT MKG	RECESSED		
LINE - 5"	LINE - 5"	LINE - 5"	PAVT MKG			
			LINE - 6"			
WHITE	YELLOW	WHITE				
EDGE LINE	EDGE LINE	SKIP DASH				
(FOOT)	(FOOT)	(FOOT)	(FOOT)			
SB I - 55						
STA	TO	STA				
271+11.17	TO	274+39.49	328.32	328.32	164.16	820.80
OMISSION SN 084-0499						
281+62.05	TO	286+67.05	505.00	505.00	252.50	1,262.50
NB I - 55						
STA	TO	STA				
271+11.17	TO	274+39.49	328.32	328.32	164.16	820.80
OMISSION SN 084-0500						
281+62.05	TO	287+01.84	539.79	539.79	269.90	1,349.48
TOTAL					4,253.58	4,253.58

MODEL: Default
 FILE: MainE_Propulsion.dwg
 PROJECT: I-55 MAINLINE STRIPING
 DATE: 10/16/2020

USER NAME = blaileyba	DESIGNED -	REVISED -
	DRAWN -	REVISED -
PLOT SCALE = 40.0000' / in.	CHECKED -	REVISED -
PLOT DATE = 10/16/2020	DATE -	REVISED -

**STATE OF ILLINOIS
DEPARTMENT OF TRANSPORTATION**

SCHEDULES	
SCALE:	SHEET OF SHEETS STA. TO STA.

F.A.I. RTE.	SECTION	COUNTY	TOTAL SHEETS	SHEET NO.
55	(84-4 B) PCC	SANGAMON	18	6
CONTRACT NO. 72L94				
ILLINOIS FED. AID PROJECT				

GUARDRAIL TREATMENT

LOCATION					63200310	63000001	78200005	63100167	72501000	63100045	63100085
					GUARDRAIL REMOVAL	SPBGR TY A 6' POSTS B	GUARDRAIL REFLECTORS TY A	TRAFFIC BARRIER TERMINAL TY 1, SP, TAN A	TERMINAL MARKER DIRECT APPLIED	TRAFFIC BARRIER TERMINAL TY 2 D	TRAFFIC BARRIER TERMINAL TY 6 C
STA	TO	STA	NB/SB	LT/RT	(FOOT)	(FOOT)	(EACH)	(EACH)	(EACH)	(EACH)	(EACH)
270+69.38	TO	274+21.81	NB	LT	352.43						
281+79.71	TO	290+17.62	NB	LT	837.91						
267+41.27	TO	274+21.81	SB	RT	680.54						
281+79.75	TO	288+20.40	SB	RT	640.65						
TOTAL					2,511.53	2,425.0	32	2	2	2	4

78100100 - RAISED REFLECTIVE PAVEMENT MARKER

LOCATION			QUANTITY
			(EACH)
SB I-55			
STA	TO	STA	
271+11.17	TO	274+39.49	8
OMISSION SN 084-0499			
281+62.05	TO	286+67.05	13
NB I-55			
STA	TO	STA	
271+11.17	TO	274+39.49	8
OMISSION SN 084-0500			
281+62.05	TO	287+01.84	14
TOTAL			43

CONCRETE ITEMS

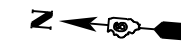
LOCATION			50102400	Z0041895
			CONCRETE REMOVAL (CU YD)	POLYMER CONCRETE (CU FT)
STA	JOINT	LT/RT		
273+12.26	WIDE FLANGE	LT & RT	1.04	46.09
274+08.53	EXPANSION	LT & RT		33.78
282+88.97	WIDE FLANGE	LT & RT	1.04	46.09
281+90.41	EXPANSION	LT & RT		33.78
TOTALS			2.08	159.73

**STATE OF ILLINOIS
DEPARTMENT OF TRANSPORTATION**

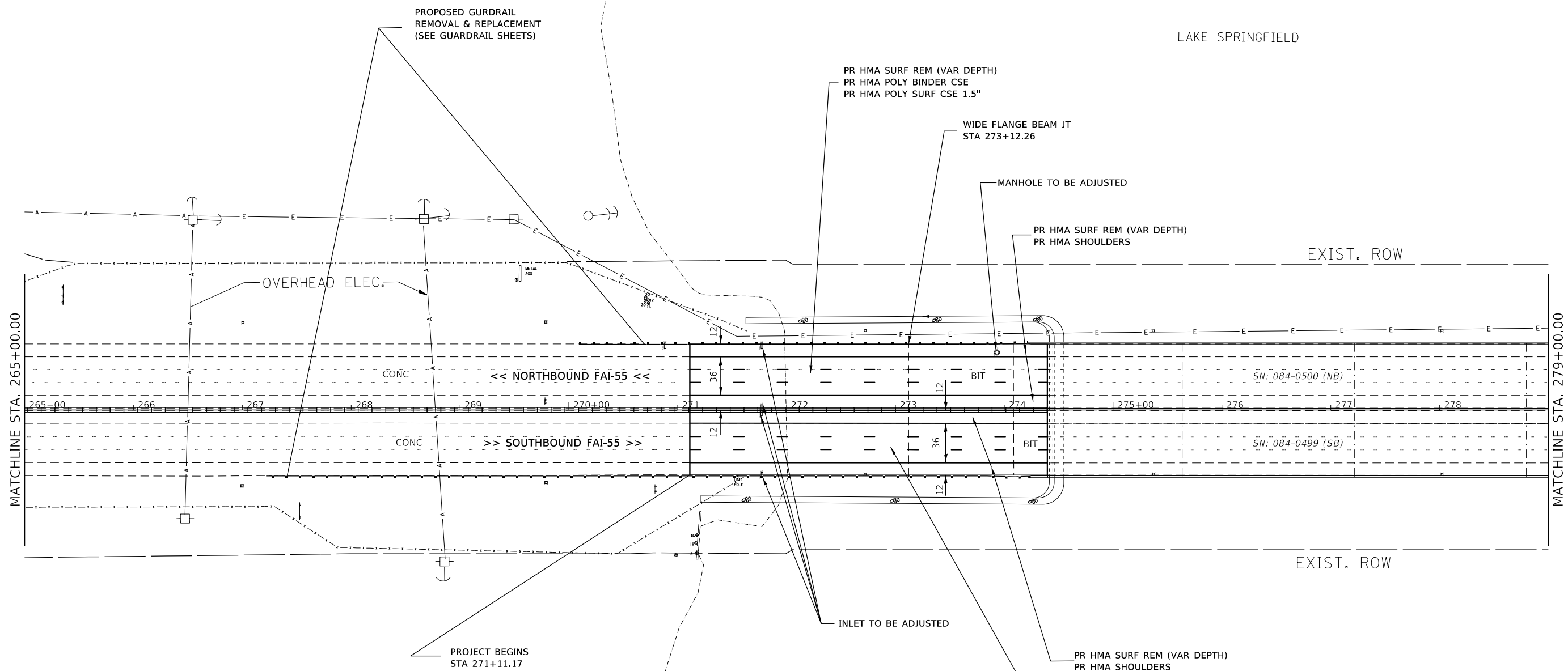
SCHEDULES

USER NAME = kernee	DESIGNED -	REVISED -
	DRAWN -	REVISED -
PLOT SCALE = 40.0000' / in.	CHECKED -	REVISED -
PLOT DATE = 10/16/2020	DATE -	REVISED -

SCALE:	SHEET	OF	SHEETS	STA.	TO STA.	F.A.I. RTE.	SECTION	COUNTY	TOTAL SHEETS	SHEET NO.
						55	(84-4 B) PCC	SANGAMON	18	7
						CONTRACT NO. 72L94				
						ILLINOIS FED. AID PROJECT				



LAKE SPRINGFIELD



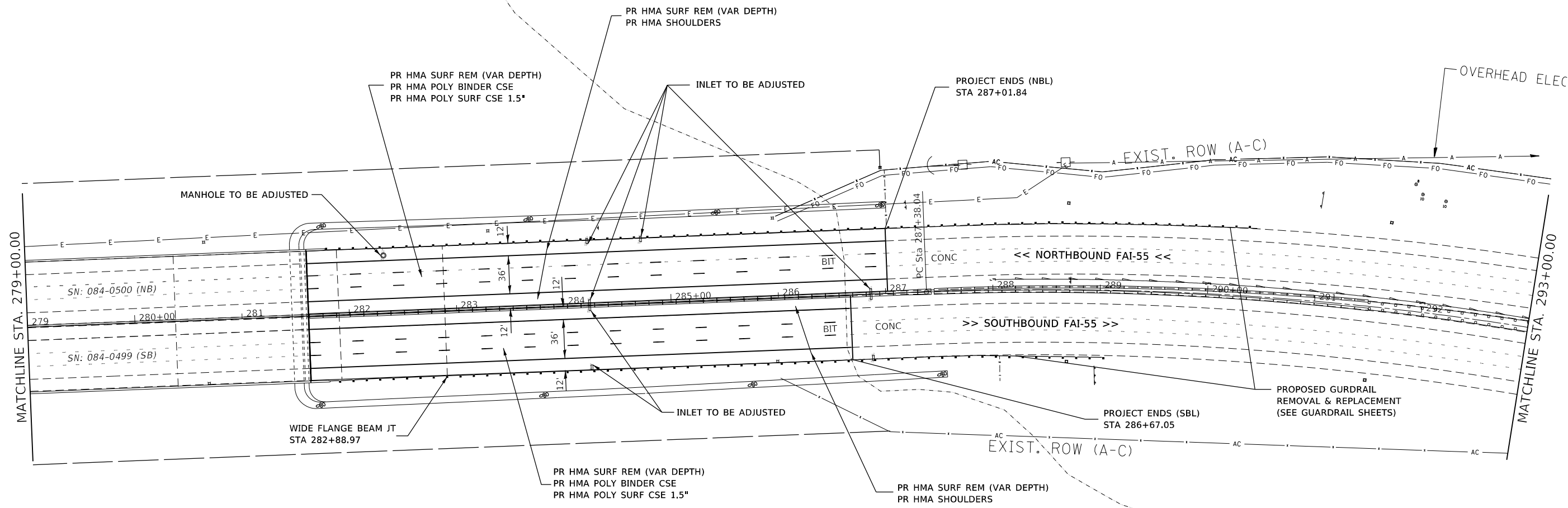
MODEL: Default
 FILE: I:\M&E_Plan\planroom.dwg
 PROJECT: I:\Projects\72194\I-55\Drawings\CADD\Drawings\72194_Plan1.dwg

USER NAME = blakleyba	DESIGNED -	REVISED -
	DRAWN -	REVISED -
PLOT SCALE = 100.0000' / in.	CHECKED -	REVISED -
PLOT DATE = 10/16/2020	DATE -	REVISED -

**STATE OF ILLINOIS
DEPARTMENT OF TRANSPORTATION**

I-55 PLAN SHEETS			
SN: 084-0499 (SB) & SN: 084-0500 (NB)			
SCALE:	SHEET	OF SHEETS	STA. TO STA.

F.A.I. RTE.	SECTION	COUNTY	TOTAL SHEETS	SHEET NO.
55	(84-4 B) PCC	SANGAMON	18	8
CONTRACT NO. 72194				
ILLINOIS FED. AID PROJECT				



LAKE SPRINGFIELD

MOE:\1_Default\FILE\lake\pcc\planroom.dwg I:\lake\pcc\planroom\DOT\Office\Drawt\6\Projects\0672194\CADD\Drawt\CAD\Drawt\0672194.dwg PLAN1.dgn

USER NAME = blakleyba	DESIGNED -	REVISED -
	DRAWN -	REVISED -
PLOT SCALE = 100.0000' / in.	CHECKED -	REVISED -
PLOT DATE = 10/16/2020	DATE -	REVISED -

**STATE OF ILLINOIS
DEPARTMENT OF TRANSPORTATION**

I-55 PLAN SHEETS			
SN: 084-0499 (SB) & SN: 084-0500 (NB)			
SCALE:	SHEET	OF SHEETS	STA. TO STA.

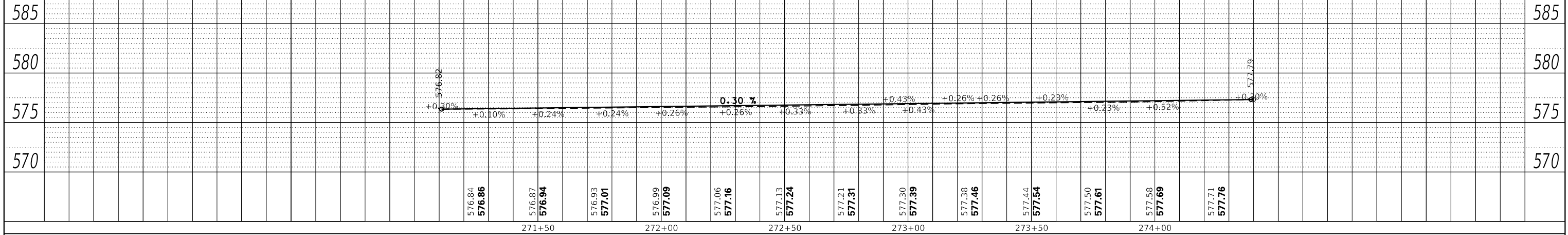
F.A.I. RTE.	SECTION	COUNTY	TOTAL SHEETS	SHEET NO.
55	(84-4 B) PCC	SANGAMON	18	9
CONTRACT NO. 72194				
ILLINOIS FED. AID PROJECT				

PLAN	SURVEYED	BY	DATE
	PLOTTED		
	ALIGNMENT CHECKED		
	GRADE CHECKED		
	STRUCTURE NOTATION CHECKED		
	NOTE BOOK		
	NO.		
	CADD FILE NAME		

PROFILE	SURVEYED	BY	DATE
	PLOTTED		
	GRADES CHECKED		
	STRUCTURE NOTATION CHECKED		
	NOTE BOOK		
	NO.		
	CADD FILE NAME		

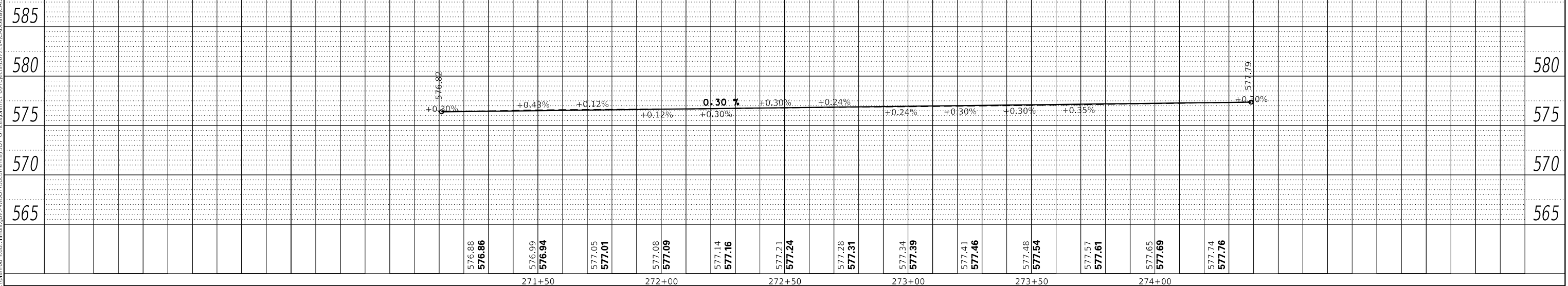
NORTH END NORTH BOUND LANES

NOTE:
PGL SET AT INSIDE EOP
SEE TYPICAL SECTION



NORTH END SOUTH BOUND LANES

NOTE:
PGL SET AT INSIDE EOP
SEE TYPICAL SECTION



MODEL: Default
FILE NAME: p:\hlp\room.dia\illinois.gov\PIWIDOT\Documents\DOT\Office\Bartlett\Projects\07271945\CADD\07271945\p1r.dgn

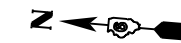
USER NAME = blaileyba	DESIGNED -	REVISED -
	DRAWN -	REVISED -
PLOT SCALE = 40.0000' / in.	CHECKED -	REVISED -
PLOT DATE = 10/16/2020	DATE -	REVISED -

**STATE OF ILLINOIS
DEPARTMENT OF TRANSPORTATION**

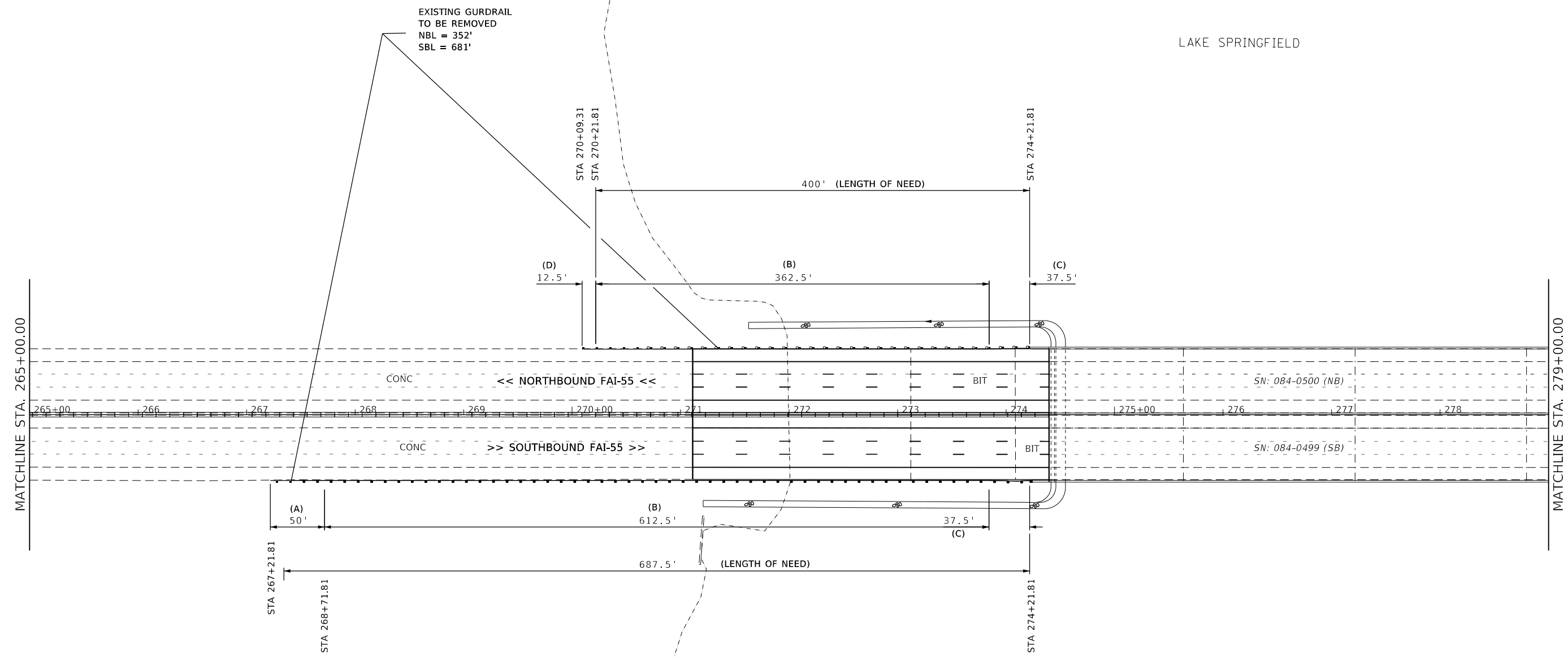
I-55 PROFILES

SCALE: SHEET OF SHEETS STA. TO STA.

F.A. RTE.	SECTION	COUNTY	TOTAL SHEETS	SHEET NO.
	(84-4 B) PCC	SANGAMON	18	10
CONTRACT NO.				
ILLINOIS FED. AID PROJECT				



LAKE SPRINGFIELD



- (A) PAY LIMITS - TRAFFIC BARRIER TERMINAL, TYPE 1 (SPECIAL) TANGENT
- (B) PAY LIMITS - STEEL PLATE BEAM GUARDRAIL, TYPE A, 6 FOOT POST
- (C) PAY LIMITS - TRAFFIC BARRIER TERMINAL, TYPE 6
- (D) PAY LIMITS - TRAFFIC BARRIER TERMINAL, TYPE 2

MODEL: Default
 FILE: M:\M&E_Plan\planroom.dwg
 I:\projects\72194\CADD\Drawings\DOT_Offices\Drawings\DOT\CADD\Drawings\72194-PT-CR_100.dgn

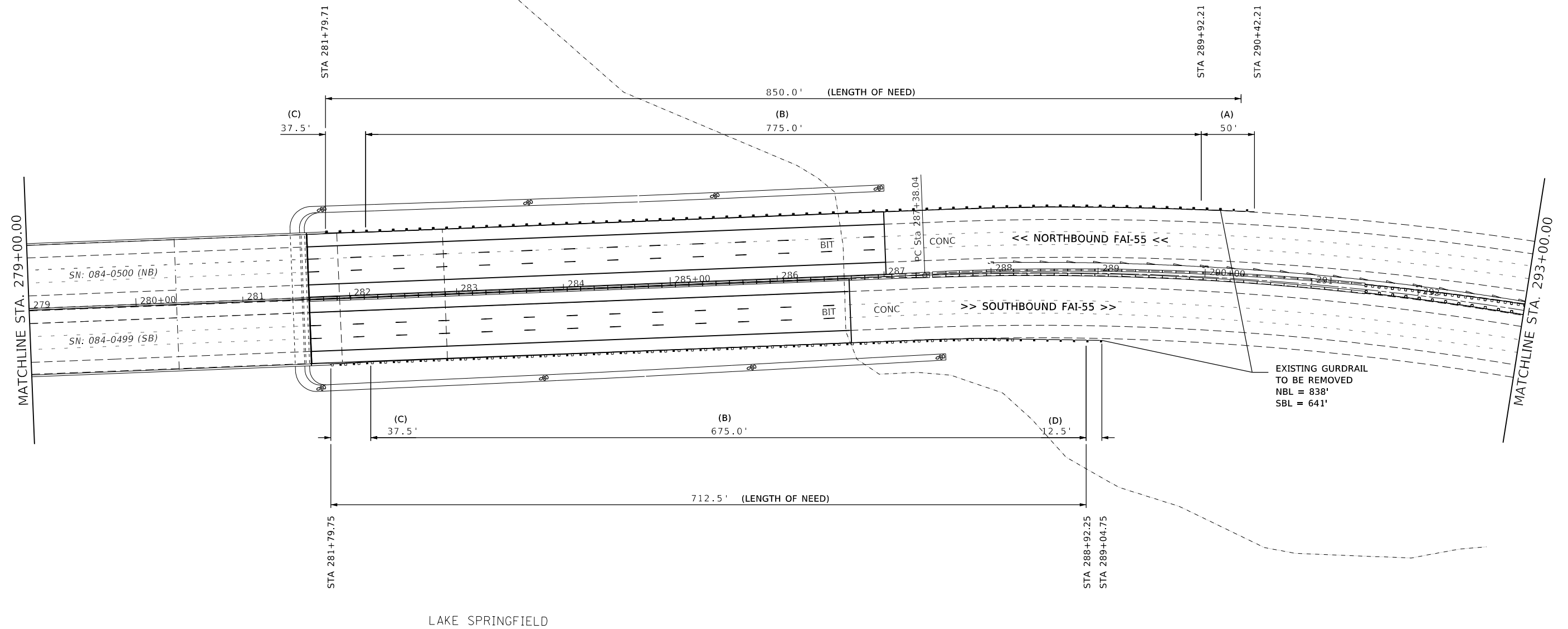
USER NAME = blakleyba	DESIGNED -	REVISED -
	DRAWN -	REVISED -
PLOT SCALE = 100.0000' / in.	CHECKED -	REVISED -
PLOT DATE = 10/16/2020	DATE -	REVISED -

**STATE OF ILLINOIS
DEPARTMENT OF TRANSPORTATION**

GUARDRAIL LON

SCALE: SHEET OF SHEETS STA. TO STA.

F.A.I. RTE.	SECTION	COUNTY	TOTAL SHEETS	SHEET NO.
55	(84-4 B) PCC	SANGAMON	18	12
CONTRACT NO. 72194				
ILLINOIS FED. AID PROJECT				



- (A) PAY LIMITS - TRAFFIC BARRIER TERMINAL, TYPE 1 (SPECIAL) TANGENT
- (B) PAY LIMITS - STEEL PLATE BEAM GUARDRAIL, TYPE A, 6 FOOT POST
- (C) PAY LIMITS - TRAFFIC BARRIER TERMINAL, TYPE 6
- (D) PAY LIMITS - TRAFFIC BARRIER TERMINAL, TYPE 2

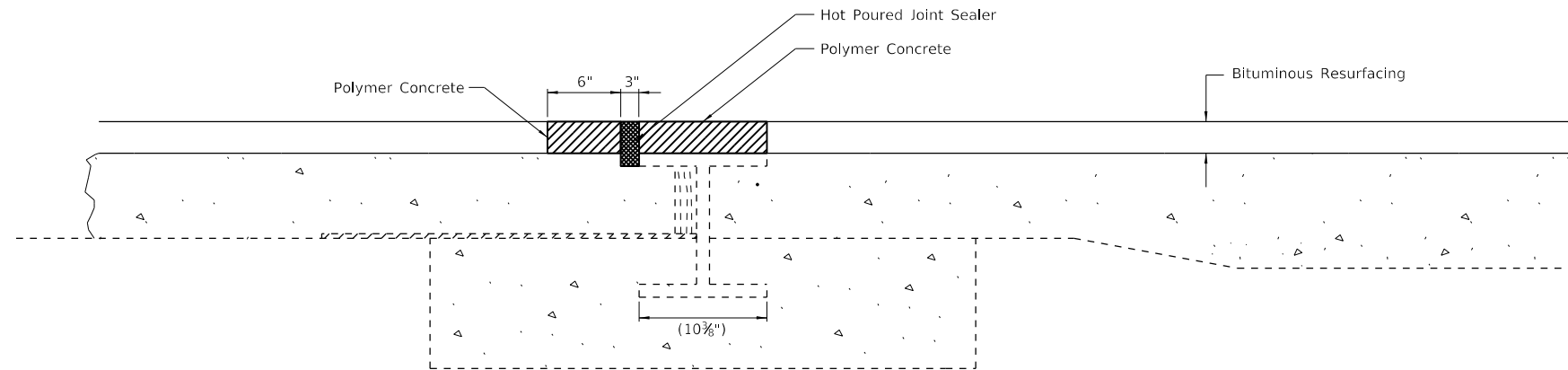
MOEFL: Default
 FILE NAME: P:\glpl\lancom\dot\illinois\pcc\PHW\DOT\Documents\DOT_Offices\Bartlett_B\Projects\DE72L94\CADD\DATA\CAD\revisions\DE72L94-rt-gr_ban.dgn

USER NAME = blakleyba	DESIGNED -	REVISED -
PLOT SCALE = 100.0000' / in.	DRAWN -	REVISED -
PLOT DATE = 10/16/2020	CHECKED -	REVISED -
	DATE -	REVISED -

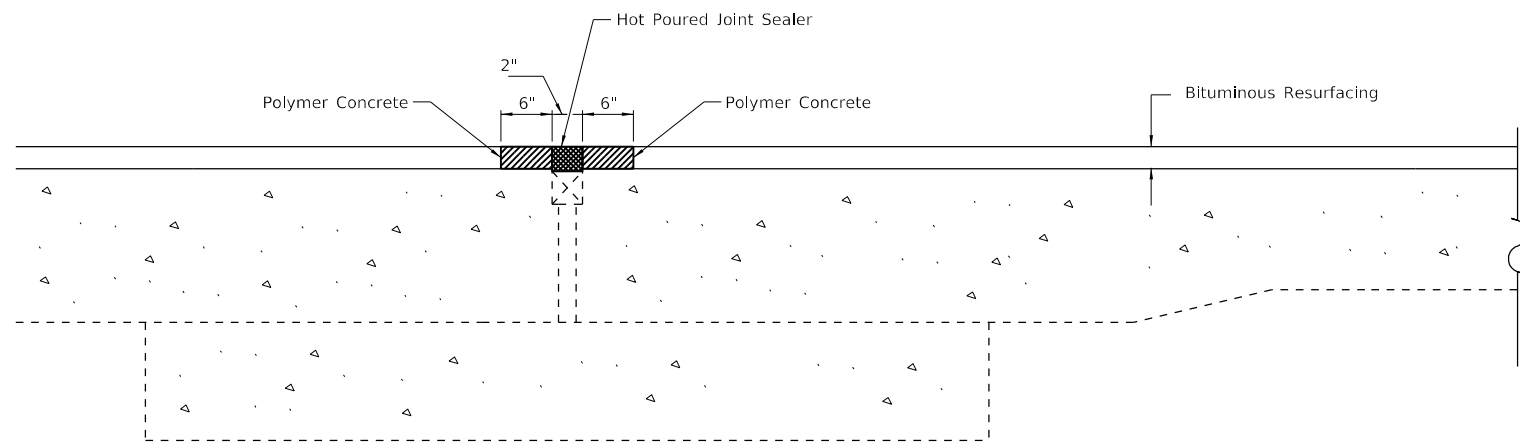
STATE OF ILLINOIS
DEPARTMENT OF TRANSPORTATION

GUARDRAIL LON			
SCALE:	SHEET	OF SHEETS	STA. TO STA.

F.A.I. RTE.	SECTION	COUNTY	TOTAL SHEETS	SHEET NO.
55	(84-4 B) PCC	SANGAMON	18	13
CONTRACT NO. 72L94				
ILLINOIS FED. AID PROJECT				



WIDE FLANGE BEAM TERMINAL JOINT



PREFORMED JOINT SEAL TREATMENT
(AT PREFORMED JOINT)

NOTES:

1. CONTRACTOR TO SURFACE OVER EXISTING WIDE FLANGE BEAM TERMINAL JOINT. UPON COMPLETION OF RESURFACING, CONTRACTOR TO SAW CUT HMA SURFACE AT THE EDGE OF THE BEAM AND AT THE EDGE OF THE EXPANSION AREA, AND REMOVE THE HMA MATERIAL, COST TO BE INCLUDED WITH THE COST FOR POLYMER CONCRETE.
2. CONTRACTOR TO BLOCK OUT EXPANSION AREA UP TO THE EDGE OF THE BEAM PRIOR TO PLACING POLYMER CONCRETE. BLOCK OUT TO BE REMOVED ONCE THE POLYMER CONCRETE HAS SUFFICIENTLY CURED.
3. CONTRACTOR IS TO NOTE LOCATION OF BEAM AND EXPANSION AREA PRIOR TO RESURFACING TO ALLOW EDGES OF THE BEAM TO BE IDENTIFIED FOR SAW CUT LOCATION.
4. HOT Poured JOINT SEALER SHALL BE PLACED IN THE GAP BETWEEN THE POLYMER CONCRETE NOSING AT THE WIDE FLANGE BEAM. COST TO BE INCLUDED WITH OTHER HMA RESURFACING ITEMS.
5. REMOVAL OF EXISTING POLYMER CONCRETE FROM THE WIDE FLANGE BEAM WILL BE PAID FOR AS CONCRETE REMOVAL.
6. THE SURFACE PREPARATION OF THE BEAM IS DETAILED IN THE RECURRING SPECIAL FOR POLYMER CONCRETE, AND IS COVERED IN THE COST OF POLYMER CONCRETE.
7. CONTRACTOR TO SURFACE OVER EXISTING PREFORMED JOINT SEALER. UPON COMPLETION OF RESURFACING, CONTRACTOR IS TO SAW CUT AT THE EDGE OF THE PJS AND REMOVE THE HMA MATERIAL, COST TO BE INCLUDED WITH HMA RESURFACING ITEMS.
8. CONTRACTOR TO PLACE HOT Poured JOINT SEALER PER STANDARD SPECIFICATION 1050.02 OVER PJS, COST TO BE INCLUDED WITH OTHER HMA RESURFACING ITEMS.
9. CONTRACTOR IS TO NOTE LOCATION OF PREFORMED JOINT SEAL PRIOR TO RESURFACING TO ALLOW EDGES TO BE IDENTIFIED FOR SAW CUT LOCATION.

MODEL: Default
 FILE NAME: p:\pub\barcom.dwg
 PROJECTS:\DOT\Office\Drawings\DOT\Projects\72L94\CADD\Drawings\DOT\72L94-RT-Details.dwg

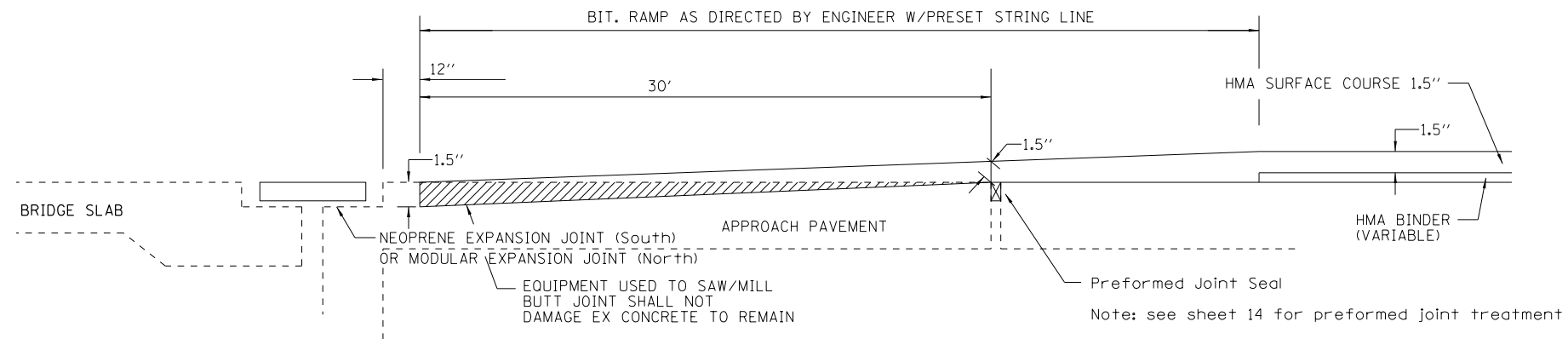
USER NAME = blakleyba	DESIGNED -	REVISED -
	DRAWN -	REVISED -
PLOT SCALE = 40.0000 ' / in.	CHECKED -	REVISED -
PLOT DATE = 10/16/2020	DATE -	REVISED -

**STATE OF ILLINOIS
DEPARTMENT OF TRANSPORTATION**

JOINT DETAILS

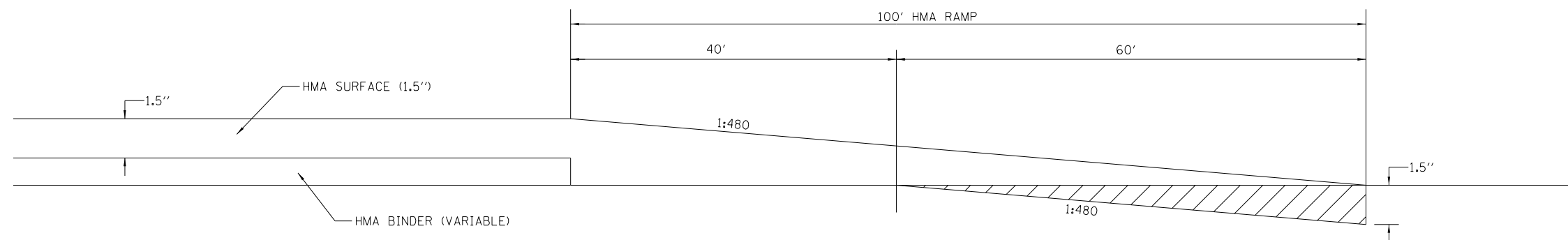
SCALE: SHEET OF SHEETS STA. TO STA.

F.A.I. RTE.	SECTION	COUNTY	TOTAL SHEETS	SHEET NO.
55	(84-4 B) PCC	SANGAMON	18	14
CONTRACT NO. 72L94				
ILLINOIS FED. AID PROJECT				



BUTT JOINT - ABUTMENT

SAW CUTS & BUTT JOINTS TO
BE INCLUDED IN THE COST OF HMA
SURFACE REMOVAL (VARIABLE DEPTH)



BUTT JOINT

MODEL: Default
 FILE NAME: p:\p\planroom.dwg
 PROJECT: 72194
 OFFICE: Sangamon
 DATE: 10/16/2020

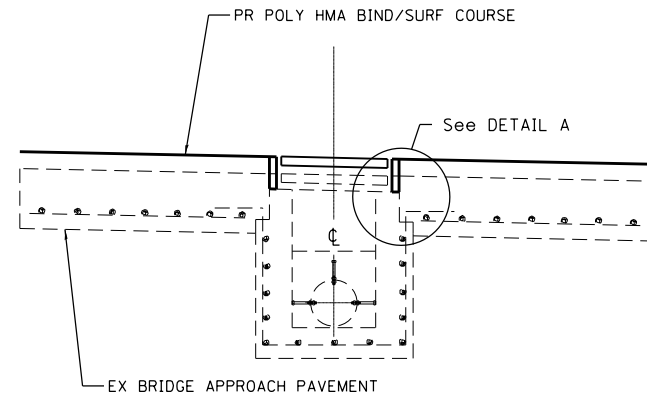
USER NAME = blakleyba	DESIGNED -	REVISED -
	DRAWN -	REVISED -
PLOT SCALE = 40.0000' / in.	CHECKED -	REVISED -
PLOT DATE = 10/16/2020	DATE -	REVISED -

**STATE OF ILLINOIS
DEPARTMENT OF TRANSPORTATION**

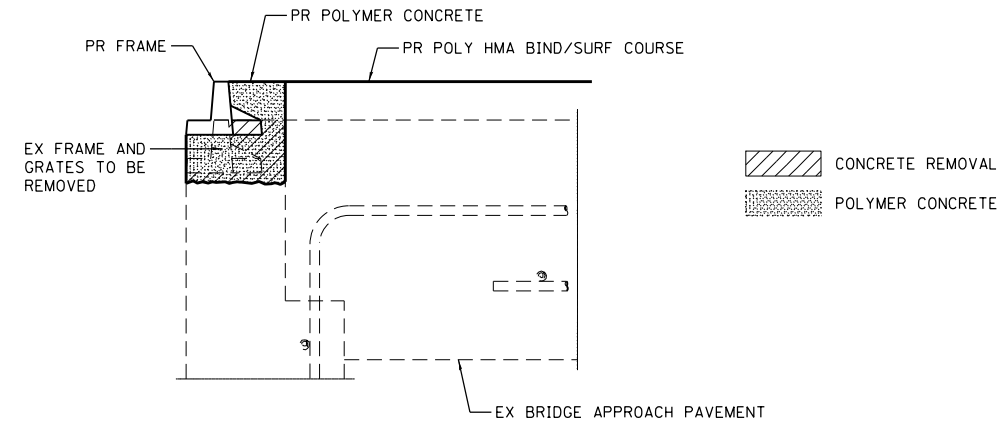
PAVING JOINT DETAILS

SCALE: SHEET OF SHEETS STA. TO STA.

F.A.I. RTE.	SECTION	COUNTY	TOTAL SHEETS	SHEET NO.
55	(84-4 B) PCC	SANGAMON	18	15
CONTRACT NO. 72194				
ILLINOIS FED. AID PROJECT				



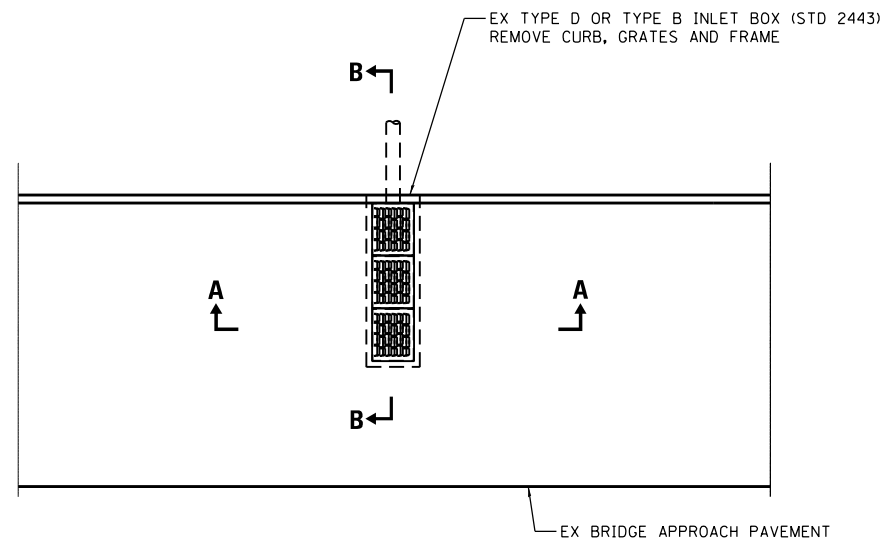
SEC. A-A



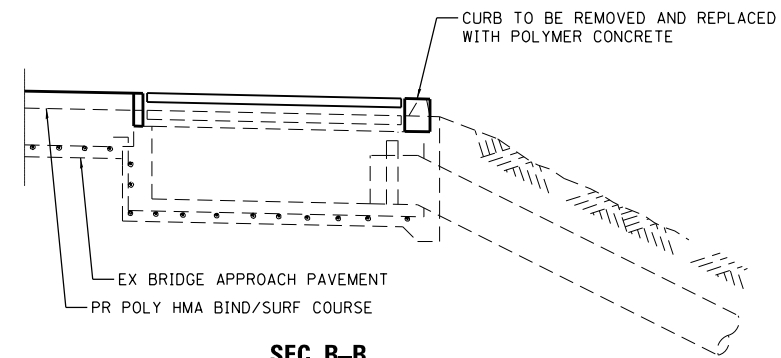
DETAIL A

GENERAL NOTES

THE CONTRACTOR SHALL FURNISH AND INSTALL A NEW CAST FRAME AND CAST GRATES AS SPECIFIED ON STANDARD 610001 FOR THE TYPE F INLET BOX (OUTSIDE SHOULDERS) OR TYPE G INLET BOX (INSIDE SHOULDERS)



PLAN



SEC. B-B

M:\E:\Default\paul@paul.com.dwg
 FILE NAME: p:\pub\paul.com.dwg
 PROJECT: 72L94
 SHEET: 16
 DATE: 10/16/2020

USER NAME = blakleyba	DESIGNED -	REVISED -
	DRAWN -	REVISED -
PLOT SCALE = 40.0000' / in.	CHECKED -	REVISED -
PLOT DATE = 10/16/2020	DATE -	REVISED -

**STATE OF ILLINOIS
DEPARTMENT OF TRANSPORTATION**

INLET ADJUSTMENT

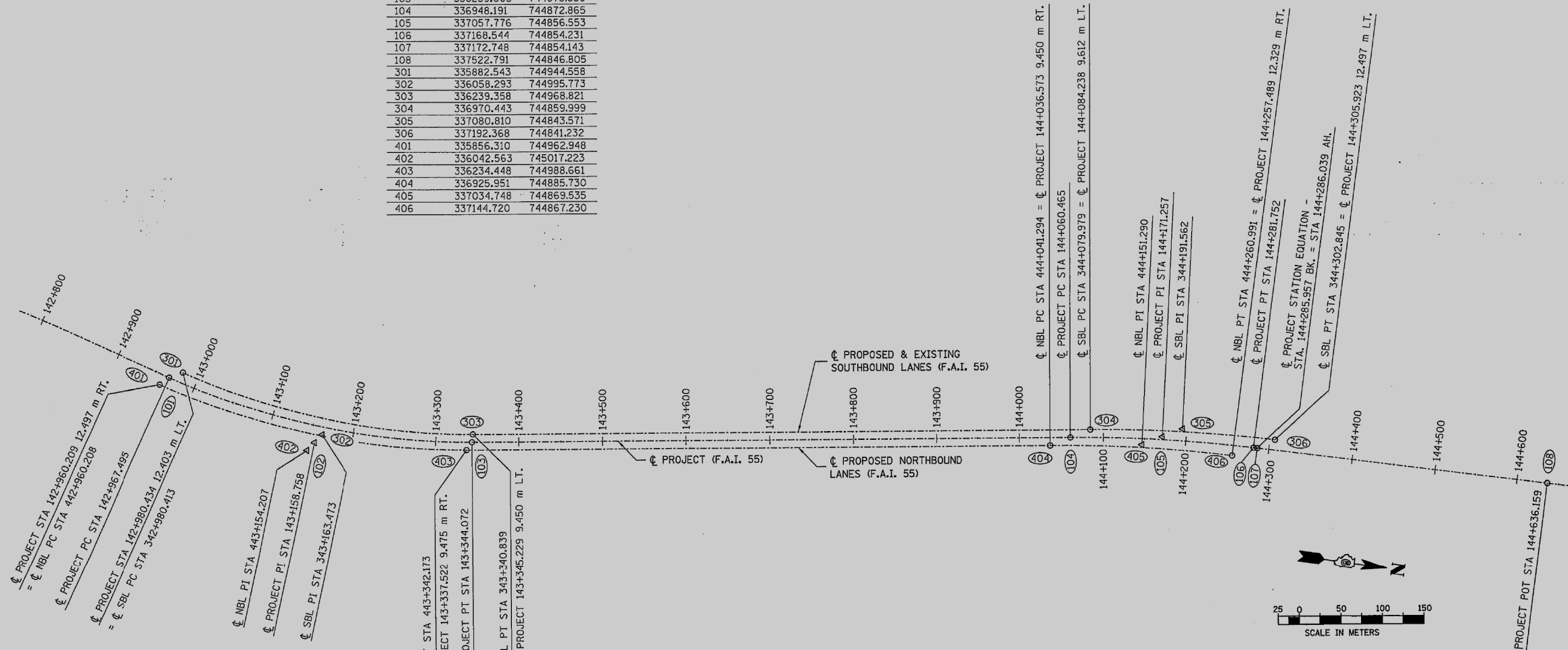
SCALE: SHEET OF SHEETS STA. TO STA.

F.A.I. RTE.	SECTION	COUNTY	TOTAL SHEETS	SHEET NO.
55	(84-4 B) PCC	SANGAMON	18	16
CONTRACT NO. 72L94				
ILLINOIS FED. AID PROJECT				

FED. AID DIST. NO.	SECTION	COUNTY	TOTAL SHEETS	SHEET NO.
55	84-4B-1	SANGAMON	18	17
FED. AID PROJECT				
S20 30				

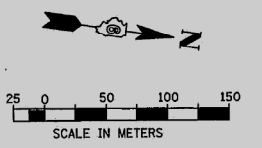
POINT NO.	NORTHING	EASTING
101	335866.802	744952.988
102	336050.427	745006.498
103	336239.605	744978.339
104	336948.191	744872.865
105	337057.776	744856.553
106	337168.544	744854.231
107	337172.748	744854.143
108	337522.791	744846.805
301	335882.543	744944.558
302	336058.293	744995.773
303	336239.358	744968.821
304	336970.443	744859.999
305	337080.810	744843.571
306	337192.368	744841.232
401	335856.310	744962.948
402	336042.563	745017.223
403	336234.448	744988.661
404	336925.951	744885.730
405	337034.748	744869.535
406	337144.720	744867.230

PROPOSED CURVE 2 SOUTHBOUND LANE	PROPOSED CURVE 2 CENTERLINE PROJECT	PROPOSED CURVE 2 NORTHBOUND LANE
305 P.I. STA= 344+191.562	105 P.I. STA= 144+171.257	405 P.I. STA= 444+151.290
Δ= 7° 15' 56"	Δ= 7° 15' 56"	Δ= 7° 15' 56"
T= 111.583	T= 110.792	T= 109.996
R= 1757.550	R= 1745.075	R= 1732.533
L= 222.866	L= 221.287	L= 219.697
E= 3.538	E= 3.513	E= 3.488
S.E.= 3.2%	S.E.= N.A.	S.E.= 3.2%
P.C. STA= 344+079.979	P.C. STA= 144+060.465	P.C. STA= 444+041.294
P.T. STA= 344+302.845	P.T. STA= 144+281.752	P.T. STA= 444+260.991




LAYOUT	JAD	06/20/00
DRAWN	DAP	06/20/00
REVIEWED	JHM	06/20/00
LAYOUT	NLR	07/06/98
DRAWN	CLG	07/06/98
REVIEWED	JHM	07/06/98

PROPOSED CURVE 1 SOUTHBOUND LANE	PROPOSED CURVE 1 CENTERLINE PROJECT	PROPOSED CURVE 1 NORTHBOUND LANE
302 P.I. STA= 343+163.473	102 P.I. STA= 143+158.758	402 P.I. STA= 443+154.207
Δ= 24° 42' 46"	Δ= 24° 42' 46"	Δ= 24° 42' 46"
T= 183.060	T= 191.262	T= 193.999
R= 835.635	R= 873.076	R= 885.570
L= 360.426	L= 376.576	L= 381.565
E= 19.816	E= 20.704	E= 21.000
S.E.= 3.3%	S.E.= N.A.	S.E.= 5.3%
P.C. STA= 342+980.413	P.C. STA= 142+967.495	P.C. STA= 442+960.208
P.T. STA= 343+340.839	P.T. STA= 143+344.072	P.T. STA= 443+342.173



ILLINOIS DEPARTMENT OF TRANSPORTATION
F.A.I. 55
SECTION 84-4B-1
SANGAMON COUNTY
CENTERLINE GEOMETRICS



HANSON ENGINEERS
INCORPORATED
1525 SOUTH SIXTH STREET, SPRINGFIELD, ILLINOIS 62703

JOB NO. _____
DATE: 24 AUG 2000

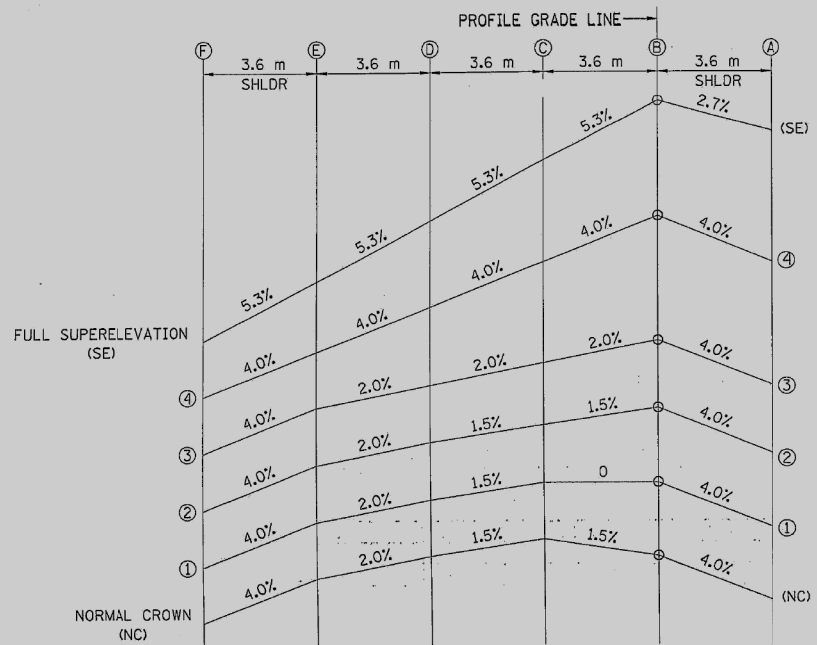
METRIC STA. = ENGLISH STA.
143 + 300.00 = 288 + 82.65

USER NAME = blkleyba	DESIGNED -	REVISD -	STATE OF ILLINOIS DEPARTMENT OF TRANSPORTATION	FOR INFORMATION ONLY				F.A.I. RTE.	SECTION	COUNTY	TOTAL SHEETS	SHEET NO.			
PLOT SCALE = 40.0000' / in.	DRAWN -	REVISD -		SCALE:	SHEET	OF	SHEETS	STA.	TO	STA.	55	(84-4 B) PCC	SANGAMON	18	17
PLOT DATE = 10/16/2020	CHECKED -	REVISD -						CONTRACT NO. 72L94							
	DATE -	REVISD -						ILLINOIS FED. AID PROJECT							

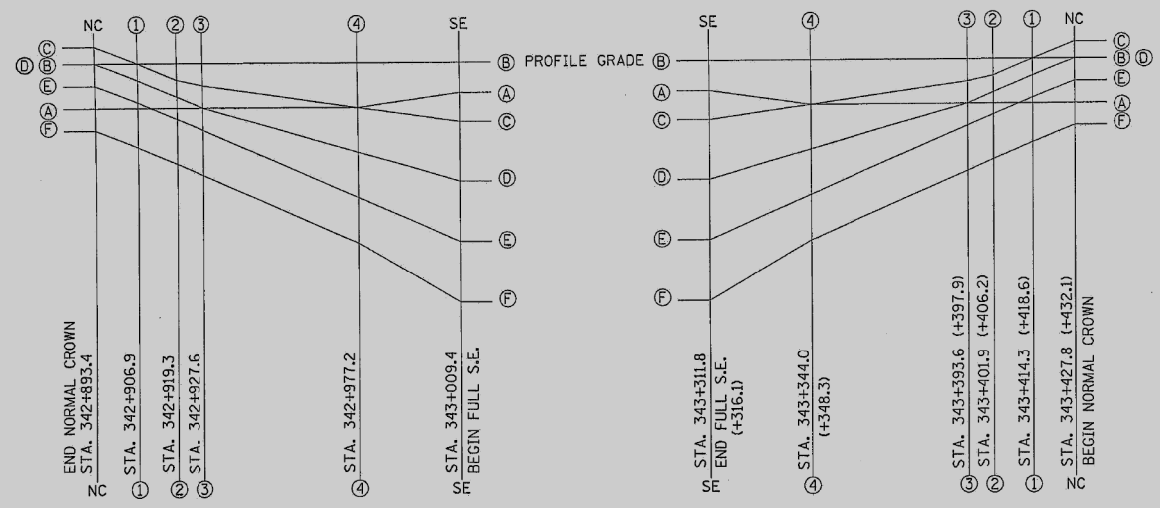
MODEL: Default
 FILE NAME: p:\public\room\dot\illinois\spc\p\p\DOT\Documents\DOT Office\blakleyba\84-4B-1\CAD\Drawings\84-4B-1-17-194-RT.dwg
 PROJECT: D:\72L94\CADD\DATA\CAD\Drawings\84-4B-1-17-194-RT.dwg

FBI RTE.	SECTION	COUNTY	TOTAL SHEETS	SHEET NO.
55	84-4B-1	SANGAMON	520	153
FED. ROAD DIST. NO.	ALPHAS	FED. AID PROJECT		

CURVE 1
SOUTHBOUND SUPERELEVATION TRANSITION



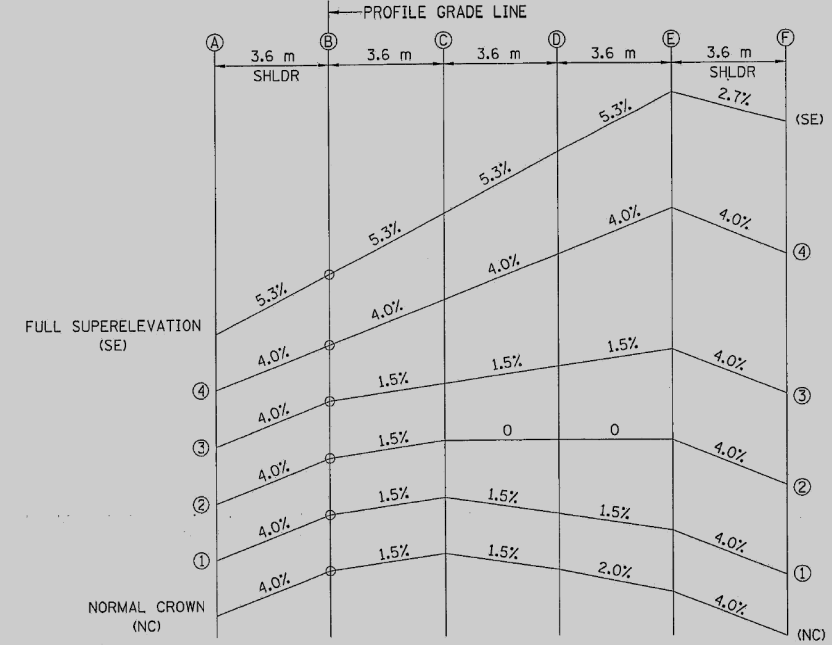
SOUTHBOUND SUPERELEVATION TRANSITION SECTIONS



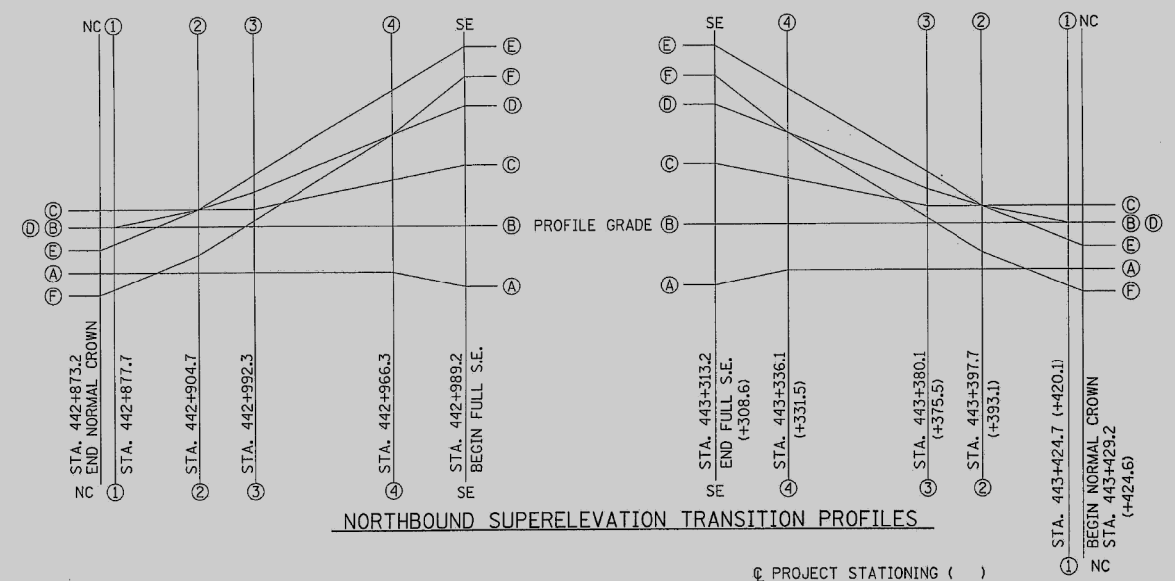
SOUTHBOUND SUPERELEVATION TRANSITION PROFILES

SECTION	OFFSET FROM PROFILE GRADE ELEVATION					
	F	E	D	C	B	A
FULL (SE)	-0.763	-0.572	-0.382	-0.191	0.000	-0.097
④	-0.576	-0.432	-0.288	-0.144	0.000	-0.144
③	-0.360	-0.216	-0.144	-0.072	0.000	-0.144
②	-0.324	-0.180	-0.108	-0.054	0.000	-0.144
①	-0.270	-0.126	-0.054	0.000	0.000	-0.144
(NC)	-0.216	-0.072	0.000	0.054	0.000	-0.144

CURVE 1
NORTHBOUND SUPERELEVATION TRANSITION



NORTHBOUND SUPERELEVATION TRANSITION SECTIONS



NORTHBOUND SUPERELEVATION TRANSITION PROFILES

SECTION	OFFSET FROM PROFILE GRADE ELEVATION					
	A	B	C	D	E	F
FULL (SE)	-0.191	0.000	0.191	0.382	0.572	0.475
④	-0.144	0.000	0.144	0.288	0.432	0.288
③	-0.144	0.000	0.054	0.108	0.162	0.018
②	-0.144	0.000	0.054	0.054	0.054	-0.090
①	-0.144	0.000	0.054	0.000	-0.054	-0.198
(NC)	-0.144	0.000	0.054	0.000	-0.072	-0.216

PROJECT STATIONING ()

ILLINOIS DEPARTMENT OF TRANSPORTATION
F.A.I. 55
SECTION 84-4B-1
SANGAMON COUNTY

**SUPERELEVATION TRANSITION
CURVE 1**

1525 SOUTH SIXTH STREET SPRINGFIELD, ILLINOIS 62703

DATE: 24 AUG 2000

MOEEL: Default
FILE: hlanet: p:\pub\harcam\dot\illinois\pcc\84-4b-1\curves\0672194-1h-detailed.dwg

LAYOUT	JAD	06/20/00
DRAWN	CLC	06/20/00
REVIEWED	JHM	06/20/00
LAYOUT	JAD	07/06/98
DRAWN	CLC	07/06/98
REVIEWED	JHM	07/06/98

USER NAME = blakleyba	DESIGNED -	REVISED -
PLOT SCALE = 40.0000 "/in.	DRAWN -	REVISED -
PLOT DATE = 10/16/2020	CHECKED -	REVISED -
	DATE -	REVISED -

**STATE OF ILLINOIS
DEPARTMENT OF TRANSPORTATION**

FOR INFORMATION ONLY

SCALE: SHEET OF SHEETS STA. TO STA.

F.A.I. RTE.	SECTION	COUNTY	TOTAL SHEETS	SHEET NO.
55	(84-4 B) PCC	SANGAMON	18	18
CONTRACT NO. 72194				
ILLINOIS FED. AID PROJECT				