

STATE OF ILLINOIS
DEPARTMENT OF TRANSPORTATION

F.A.I. RTE.	SECTION	COUNTY	TOTAL SHEETS	SHEET NO.
*	82-4PS-2	ST. CLAIR	3	1
		ILLINOIS	CONTRACT NO. 76M33	

FAI 70/FAP 594

INDEX OF SHEETS

- COVER SHEET
- SUMMARY OF QUANTITIES
- HORIZONTAL COLLECTOR WELL LATERAL PLAN

D-98-044-19



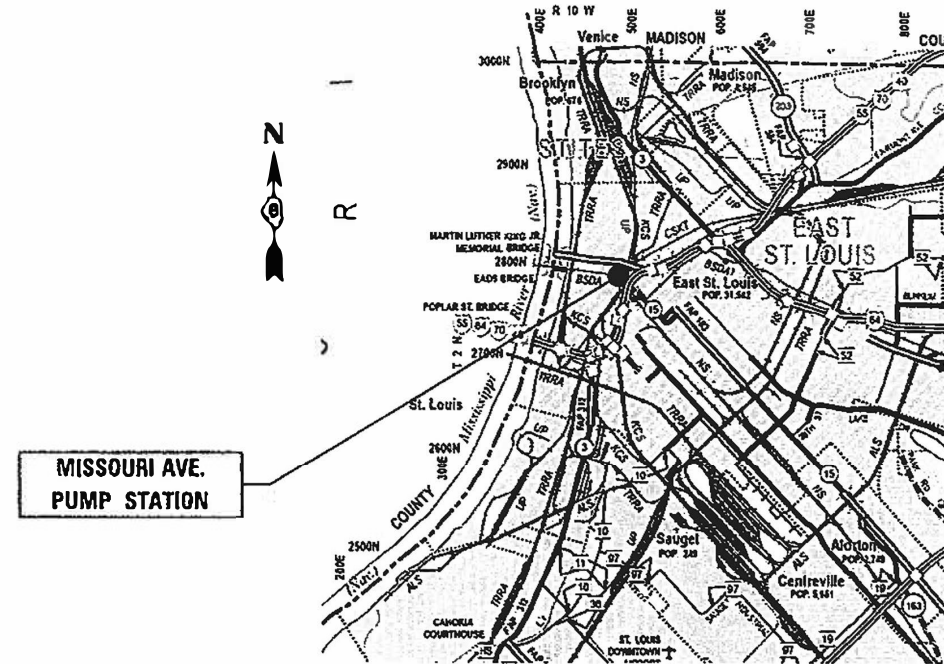
PROPOSED
HIGHWAY PLANS

FAI 70 (I-55/I-64)
SECTION 82-4PS-2
MISSOURI AVENUE DEEP WELL FACILITY
WATER MANAGEMENT SYSTEM IMPROVEMENTS
ST. CLAIR COUNTY

C-98-060-19

HIGHWAY STANDARDS

000001-08 STANDARD SYMBOLS, ABBREVIATIONS AND PATTERNS



ST. CLAIR COUNTY



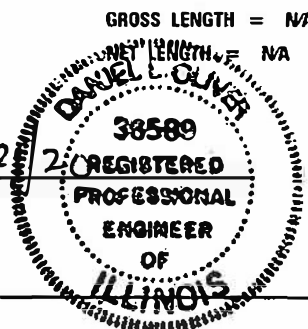
FULL SIZE PLANS HAVE BEEN PREPARED USING STANDARD ENGINEERING SCALES. REDUCED SIZED PLANS WILL NOT CONFORM TO STANDARD SCALES. IN MAKING MEASUREMENTS ON REDUCED PLANS, THE ABOVE SCALES MAY BE USED.

J.U.L.I.E.
JOINT UTILITY LOCATION INFORMATION FOR EXCAVATION
1-800-892-0123
OR 811

PROJECT ENGINEER: HERVE GELIN 618-346-3179
PROJECT MANAGER: PHILLIP SAWYER 618-346-3275

CONTRACT NO. 76M33

Daniel L. Oliver 2/2021
DANIEL L. OLIVER
REGISTERED PROFESSIONAL ENGINEER
STATE OF ILLINOIS NO. 062-036589
LICENSE EXPIRES NOVEMBER 30, 2021



PLANS PREPARED BY:
KLINGNER & ASSOCIATES, P.C.
Engineers • Architects • Surveyors
616 N. 24th St. Quincy, Illinois 62301 217.223.3670
STATE OF ILLINOIS DESIGN FIRM # 1842738

STATE OF ILLINOIS
DEPARTMENT OF TRANSPORTATION

SUBMITTED Aug. 11, 2020
Keith Roberts
REGIONAL ENGINEER

December 4, 2020
Scott E. Etk
ENGINEER OF DESIGN AND ENVIRONMENT

December 4, 2020
Jessamyn Gu
DIRECTOR OF HIGHWAYS PROJECT IMPLEMENTATION

PRINTED BY THE AUTHORITY
OF THE STATE OF ILLINOIS

JWS 2:45:54 PM 2/21/2021 C:\11\m111802\Work Order 10 - Well Cleaning\CAO 3\m111802\76M33-01.dwg

ILLINOIS DEPARTMENT OF TRANSPORTATION

SUMMARY OF QUANTITIES

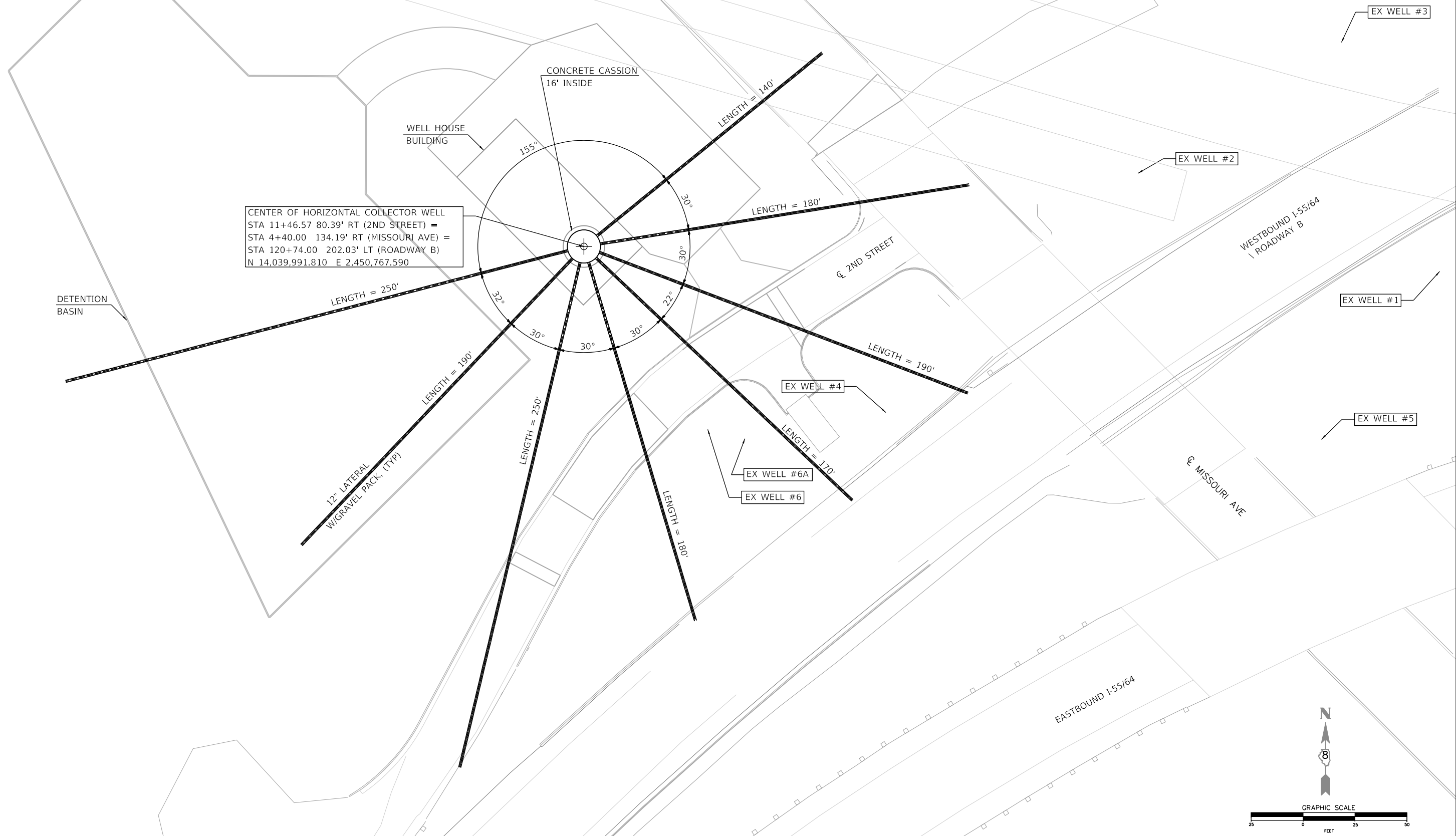
CODE NO.	ITEM	UNIT	TOTAL QUANTITY	CONSTRUCTION TYPE CODE		
				100% STATE URBAN	ST. CLAIR	
					0040	
67100100	MOBILIZATION	L SUM	1		1	
X0320091	HORIZONTAL WELL, CLEANING	FOOT	1,550		1,550	
X0320092	ADDITIONAL TREATMENT NO. 1, HORIZONTAL	FOOT	250		250	
X0320093	ADDITIONAL TREATMENT NO. 2, HORIZONTAL	FOOT	250		250	

REV. - MS

Q:\11 Files\110023\Work_Order_10 - Well Cleaning\CADD Sheets\11076M33-sh-500.dgn

KLINGNER & ASSOCIATES, P.C. Engineers • Architects • Surveyors 616 N. 24TH ST. QUINCY, ILLINOIS 62301 217.223-3670 STATE OF ILLINOIS DESIGN FIRM NO. 184-2738	USER NAME = <i>ams</i>	DESIGNED - AMS	REVISED -	STATE OF ILLINOIS DEPARTMENT OF TRANSPORTATION	SUMMARY OF QUANTITIES			F.A.I. RTE.	SECTION	COUNTY	TOTAL SHEETS	SHEET NO.
	PLOT SCALE = 2:10 (1"=10')	DRAWN - ADL	REVISED -					VAR	82-4PS-2	ST. CLAIR	3	2
	PLOT DATE = 2/21/2020	CHECKED - AMS	REVISED -									CONTRACT NO. 76M33
		DATE - ADL	REVISED -		SCALE:	SHEET OF SHEETS	STA. TO STA.	ILLINOIS FED. AID PROJECT				

D:\11 Files\110223\Work - Order 10 - Well Cleaning\CADD Sheets\0876M33-eh-tr-plan.dgn



CENTER OF HORIZONTAL COLLECTOR WELL
 STA 11+46.57 80.39' RT (2ND STREET) =
 STA 4+40.00 134.19' RT (MISSOURI AVE) =
 STA 120+74.00 202.03' LT (ROADWAY B)
 N 14,039,991.810 E 2,450,767.590

DETENTION BASIN

CONCRETE CASSION
 16' INSIDE

WELL HOUSE
 BUILDING

12' LATERAL
 W/GRAVEL PACK (TYP)

EX WELL #4

EX WELL #6A

EX WELL #6

EX WELL #2

EX WELL #1

EX WELL #5

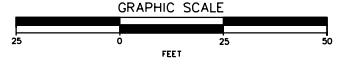
EX WELL #3

WESTBOUND I-55/64
 ROADWAY B

MISSOURI AVE

EASTBOUND I-55/64

2ND STREET



KLINGNER & ASSOCIATES, P.C.
 Engineers • Architects • Surveyors
 616 N. 24TH ST. QUINCY, ILLINOIS 62301 217.223.3670
 STATE OF ILLINOIS DESIGN FIRM NO. 184-2738

USER NAME = oms	DESIGNED - DLO	REVISED -
PLOT SCALE = 2:0" = 1' / in.	DRAWN - DLO	REVISED -
PLOT DATE = 2/21/2020	CHECKED - BRN	REVISED -
	DATE -	REVISED -

DESIGNED - DLO	REVISED -
DRAWN - DLO	REVISED -
CHECKED - BRN	REVISED -
DATE -	REVISED -

DESIGNED - DLO	REVISED -
DRAWN - DLO	REVISED -
CHECKED - BRN	REVISED -
DATE -	REVISED -

STATE OF ILLINOIS
 DEPARTMENT OF TRANSPORTATION

HORIZONTAL COLLECTOR WELL LATERAL PLAN
 MISSOURI AVENUE DEEP WELL FACILITY

SCALE: 1"=25' SHEET OF SHEETS STA. TO STA.

F.A.I. RTE.	SECTION	COUNTY	TOTAL SHEETS	SHEET NO.
VAR	82-4PS-2	ST. CLAIR	3	3
CONTRACT NO. 76M33				
ILLINOIS FED. AID PROJECT				