



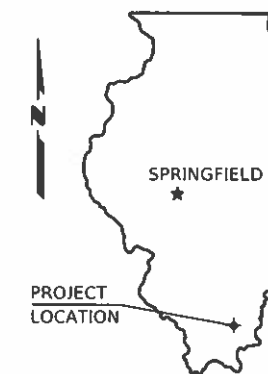
01-15-2021 LETTING ITEM 091

STATE OF ILLINOIS
DEPARTMENT OF TRANSPORTATION

PLANS FOR PROPOSED SURFACE TRANSPORTATION PROGRAM

FAU ROUTE 9545 (LIBERTY ROAD)
SECTION 19-00158-00-RS
PROJECT NO. YXTH(139)
JOB NO. C-99-062-19

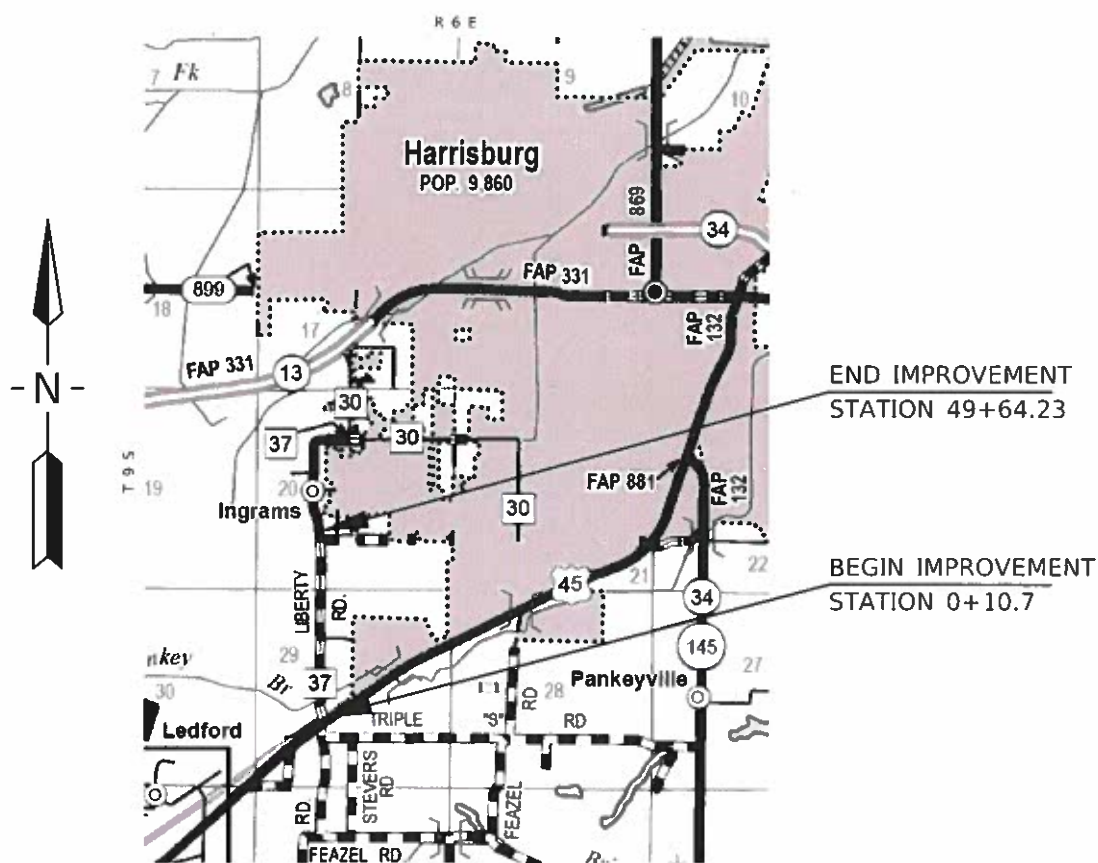
ROUTE	SECTION	COUNTY	TOTAL SHEETS	SHEET NO.
FAU 9545	19-00158-00-RS	SALINE	9	1
PROJECT NO. YXTH(139)			CONTRACT NO. 99656	



INDEX OF SHEETS

1. COVER SHEET
 2. SUMMARY OF QUANTITIES & GENERAL NOTES
 3. TYPICAL SECTIONS - MILLING
 4. TYPICAL SECTIONS - PAVING
 5. GENERAL PLAN
 6. PLAN - ADDITIONAL INLETS
 7. PLAN & PROFILE - INTERSECTION WITH BARNETT STREET
 8. INLET, SPECIAL & MANHOLE, SPECIAL
 9. MISCELLANEOUS DETAILS
- STANDARDS
- | | |
|-----------|-----------------------------------|
| 280001-07 | TEMPORARY EROSION CONTROL SYSTEMS |
| 442201-03 | CLASS C AND D PATCHES |
| 602301-04 | INLET, TYPE A |
| 604066-02 | FRAME AND LID, TYPE 15 |
| 606001-07 | CONCRETE CURB TY B AND COMB CC&G |
| 701001-02 | TRAFFIC CONTROL |
| 701006-05 | TRAFFIC CONTROL |
| 701011-04 | TRAFFIC CONTROL |
| 701301-04 | TRAFFIC CONTROL |
| 701311-03 | TRAFFIC CONTROL |
| 701501-06 | TRAFFIC CONTROL |
| 701901-08 | TRAFFIC CONTROL DEVICES |
| 780001-05 | TYPICAL PAVEMENT MARKINGS |

SALINE COUNTY



Previously constructed as Section 770
& Section 02-00000-00-SM

CLASSIFICATION : MAJOR COLLECTOR
ADT : 950
DESIGN SPEED : 40 MPH

CONTRACT NO. 99656

Round Table Design, Inc.
PROFESSIONAL ENGINEERING - LAND SURVEYING
1457 HIGHWAY 145 S HARRISBURG, IL (618) 253-6017



Kevin Phillips
Kevin Phillips
PROFESSIONAL ENGINEER
#062-047293
EXPIRES NOV. 30, 2021

LOCATION MAP

SCALE: 1" = 1 MILE

NET LENGTH OF IMPROVEMENT = 4,953.53 FT. = 0.9382 MILES

ILLINOIS DEPARTMENT OF TRANSPORTATION	
Approved	10/15/2020 <i>Gary Piche</i> Saline County Engineer
Passed	OCT 21, 2020 <i>[Signature]</i> District 9 Engineer of Local Roads and Streets
Releasing for Bid Based on Limited Review	OCT 21, 2020 <i>Keith Roberts</i> Keith Roberts, P.E. Acting Region Five Engineer

ROUTE	SECTION	COUNTY	TOTAL SHEETS	SHEET NO.
FAU 9545	19-00158-00-RS	SALINE	9	2
PROJECT NO. YXTH(139)			CONTRACT NO. 99656	

SUMMARY OF QUANTITIES

<u>CODE NO.</u>	<u>PAY ITEM</u>	<u>UNIT</u>	<u>TOTAL</u>
* X4401198	HOT-MIX ASPHALT SURFACE REMOVAL, VARIABLE DEPTH	SQ YD	15,164
* X5539000	STORM SEWERS TO BE CLEANED 60"	FOOT	50
* X6020084	MANHOLE, SPECIAL	EACH	2
* X6024240	INLETS, SPECIAL	EACH	6
* X6026800	INLETS TO BE RECONSTRUCTED (SPECIAL)	EACH	1
* X7010216	TRAFFIC CONTROL AND PROTECTION, (SPECIAL)	L SUM	1
* 20800150	TRENCH BACKFILL	CU YD	30
28100105	STONE RIPRAP, CLASS A3	SQ YD	3
28200200	FILTER FABRIC	SQ YD	3
40600275	BITUMINOUS MATERIALS (PRIME COAT)	POUND	360
40600290	BITUMINOUS MATERIALS (TACK COAT)	POUND	10,235
40600990	TEMPORARY RAMP	SQ YD	183
40602978	HOT-MIX ASPHALT BINDER COURSE, IL- 9.5, N50	TON	1,274
40604050	HOT-MIX ASPHALT SURFACE COURSE, IL-9.5, MIX "C", N50	TON	1,274
42300200	PORTLAND CEMENT CONCRETE DRIVEWAY PAVEMENT, 6 INCH	SQ YD	22
44000200	DRIVEWAY PAVEMENT REMOVAL	SQ YD	21
44000500	COMBINATION CURB AND GUTTER REMOVAL	FOOT	283
44201717	CLASS D PATCHES, TYPE II, 6 INCH	SQ YD	10
44201723	CLASS D PATCHES, TYPE IV, 6 INCH	SQ YD	155
550A0050	STORM SEWERS, CLASS A, TYPE 1 12"	FOOT	163
550A0090	STORM SEWERS, CLASS A, TYPE 1 18"	FOOT	66
55100700	STORM SEWER REMOVAL 15"	FOOT	38
60108104	PIPE UNDERDRAINS, TYPE 1, 4"	FOOT	215
60300305	FRAMES AND LIDS TO BE ADJUSTED	EACH	1
60500060	REMOVING INLETS	EACH	2
60609800	COMBINATION CONCRETE CURB AND GUTTER, TYPE M-6.18	FOOT	283
67100100	MOBILIZATION	L SUM	1
70300100	SHORT TERM PAVEMENT MARKING	FOOT	496
Δ 78000200	THERMOPLASTIC PAVEMENT MARKING - LINE 4"	FOOT	1,240
Δ 78000650	THERMOPLASTIC PAVEMENT MARKING - LINE 24"	FOOT	42

* SEE SPECIAL PROVISIONS

Δ SPECIALTY ITEMS

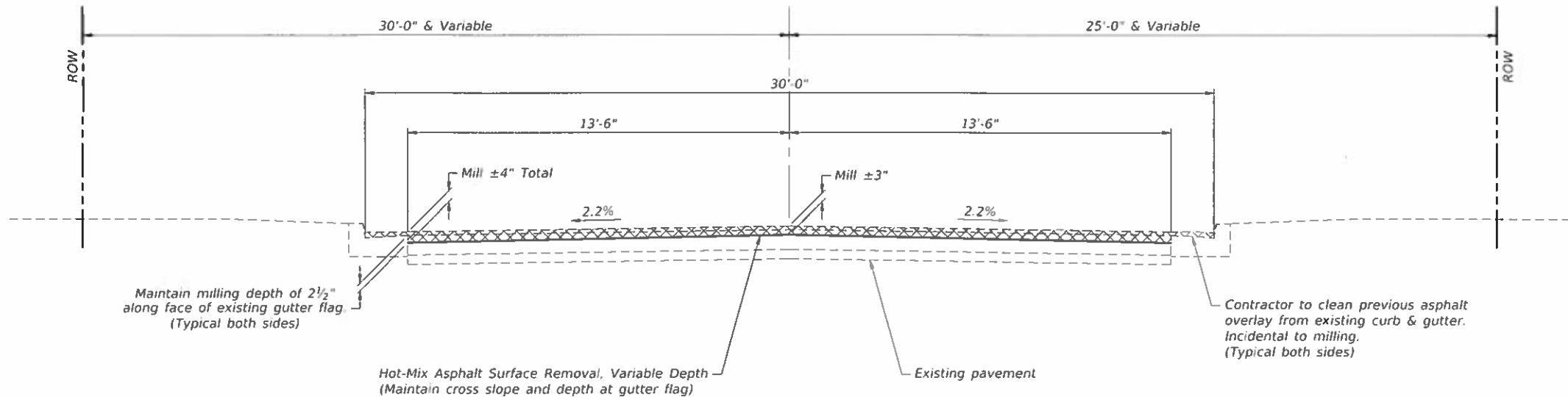
GENERAL NOTES

1. This section shall be constructed in accordance with the Plans, Special Provisions, and the "Standard Specifications for Road and Bridge Construction", adopted April 1, 2016.
2. It shall be the Contractors responsibility to verify all existing field dimensions and conditions prior to construction and ordering materials.
3. Utilities shown were located from visible facilities and surface markings only. Utilities shall be field located horizontally and vertically prior to beginning any work. The Contractor is responsible for the field location of these utilities.
4. Bituminous Materials Prime/Tack Coat shall be applied to the full width of the existing surface or aggregate base at the rates shown below.
5. All disturbed ground shall be graded smooth and seeded as outlined in the Special Provisions.
6. The centerline of the roadway shall receive Thermoplastic Pavement Marking - Line 4" (Yellow Dashed). All other pavement marking shall be as indicated on the plans.
7. Factors used for quantity calculations are as follows:

Hot-Mix Asphalt112.0 Lbs/Sq Yd/Inch
Aggregate/Riprap 2.025 Tons/Cu Yd
Bit Materials (Prime Coat), on Agg Base 0.25 Lbs/Sq Ft
Bit Materials (Tack Coat), on HMA Base ... 0.05 Lbs/Sq Ft
on HMA Lift0.025 Lbs/Sq Ft

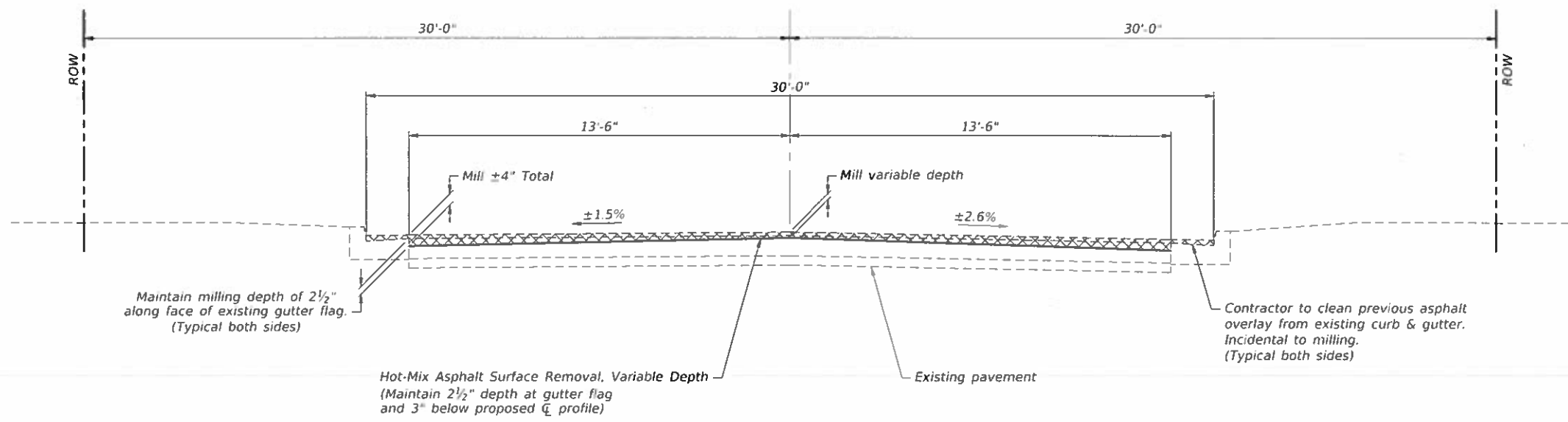
SUMMARY OF QUANTITIES
& GENERAL NOTES
FAU ROUTE 9545
SECTION 19-00158-00-RS
PROJECT NO. YXTH(139)
SALINE COUNTY

ROUTE	SECTION	COUNTY	TOTAL SHEETS	SHEET NO.
FAU 9545	19-00158-00-RS	SALINE	9	3
PROJECT NO. YXTH(139)			CONTRACT NO. 99656	



TYPICAL SECTION (MILLING)
STATION 0+10.7 - STATION 48+74

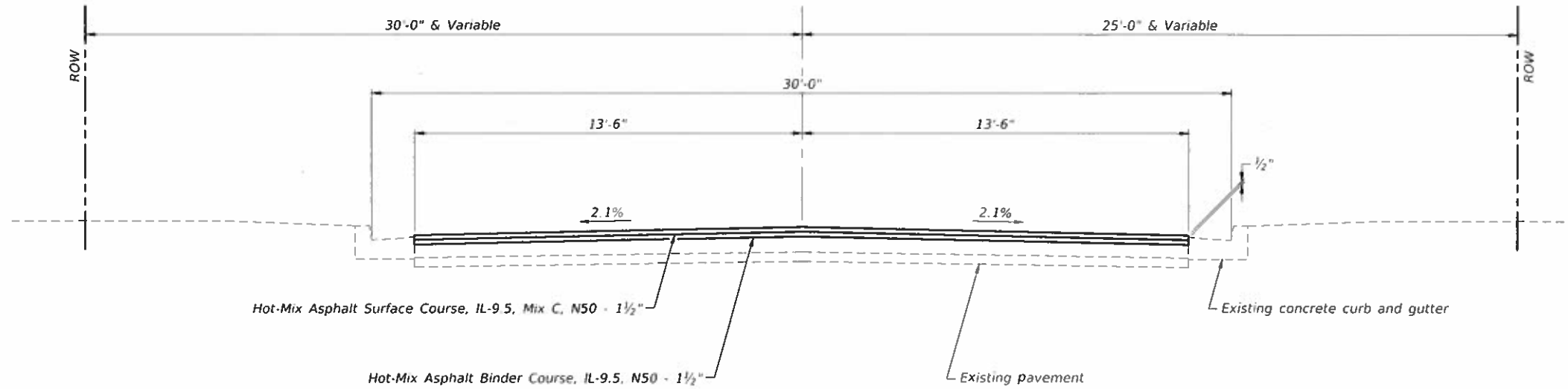
* NOTE: Transition cross slopes from
 Station 48+40 to Station 48+74.



TYPICAL SECTION (MILLING)
STATION 48+74 - STATION 49+64.23

TYPICAL SECTIONS - MILLING
 FAU ROUTE 9545
 SECTION 19-00158-00-RS
 PROJECT NO. YXTH(139)
 SALINE COUNTY

ROUTE	SECTION	COUNTY	TOTAL SHEETS	SHEET NO.
FAU 9545	19-00158-00-RS	SALINE	9	4
PROJECT NO. YXTH(139)			CONTRACT NO. 99656	



TYPICAL SECTION (PAVING)
STATION 0+10.7 - STATION 48+74

STRUCTURAL DESIGN DATA

Class III Roadway
Design Period - 15 Years

PC	920	IBV	3.0
SU	20	TF	0.046
MU	10	DT	2.576

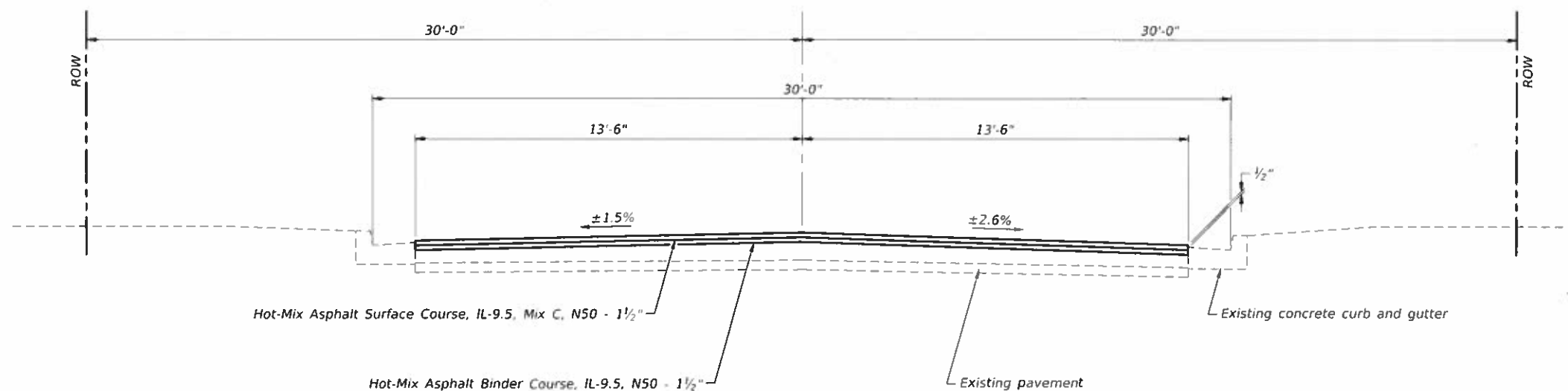
Material Coefficient

Existing Macadam	- 0.11
Existing BAM	- 0.23
Existing Surface	- 0.23
HMA Binder/Surface Course	- 0.40

HMA MIXTURE REQUIREMENTS

Mixture Use:	HMA Binder Course
PG:	PG64-22
RAP% (Max):	10
Design Air Voids:	4% @ N _{des} 50
Mixture Composition: (Gradation Mixture)	IL-9.5mm
Friction Aggregate:	None

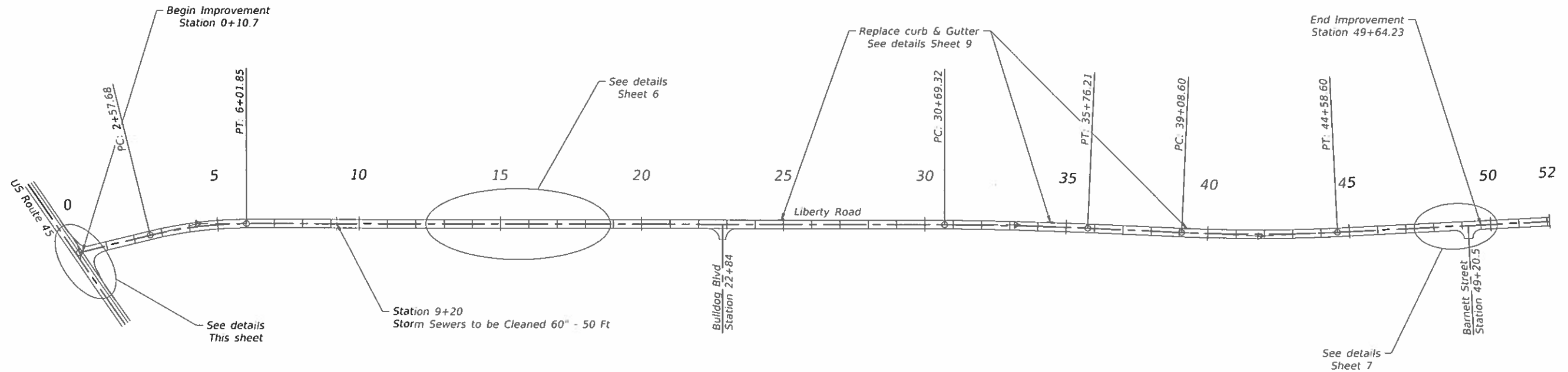
Mixture Use:	HMA Surface Course
PG:	PG64-22
RAP% (Max):	10
Design Air Voids:	4% @ N _{des} 50
Mixture Composition: (Gradation Mixture)	IL-9.5mm
Friction Aggregate:	C Surface



TYPICAL SECTION (PAVING)
STATION 48+74 - STATION 49+64.23

TYPICAL SECTIONS - PAVING
FAU ROUTE 9545
SECTION 19-00158-00-RS
PROJECT NO. YXTH(139)
SALINE COUNTY

ROUTE	SECTION	COUNTY	TOTAL SHEETS	SHEET NO.
FAU 9545	19-00158-00-R5	SALINE	9	5
PROJECT NO. YXTH(139)			CONTRACT NO. 99656	

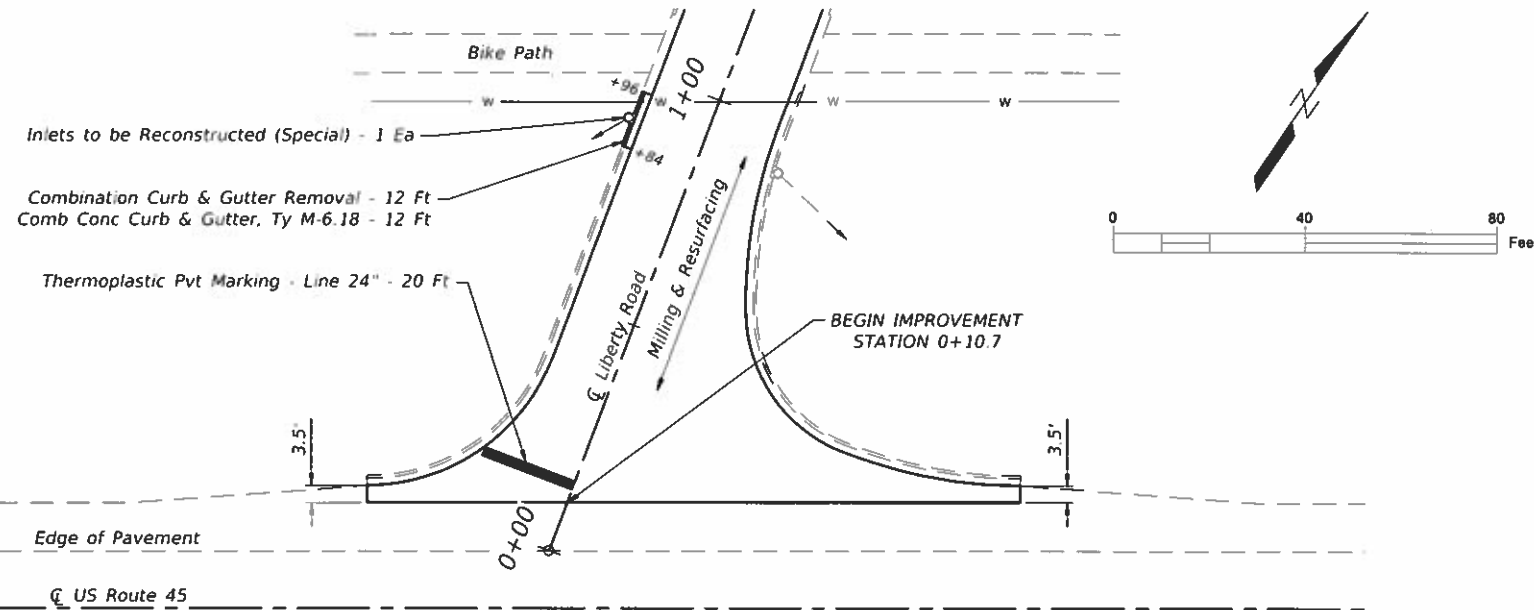


CURVE DATA - PI STA=4+30.60
 $\Delta=13^{\circ}46'00''$ T=172.92'
 $D=4^{\circ}00'00''$ L=344.17'
 $R=1432.39'$ E=10.40'
 S.E. = Normal Crown

GENERAL PLAN

CURVE DATA - PI STA=33+22.80
 $\Delta=2^{\circ}27'00''$ T=253.49'
 $D=0^{\circ}29'00''$ L=506.90'
 $R=11854.30'$ E=2.71'
 S.E. = Normal Crown

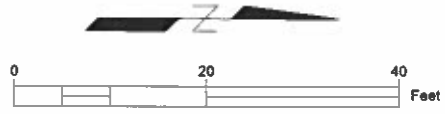
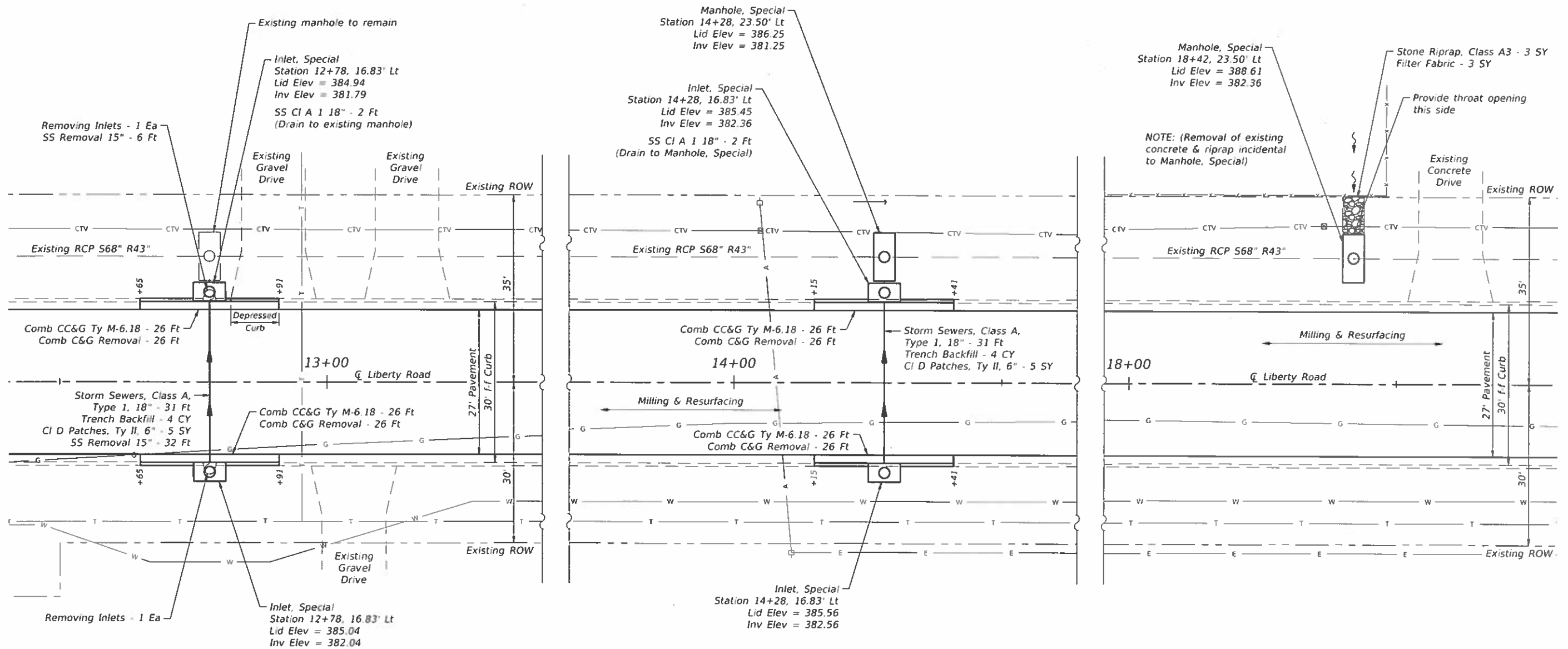
CURVE DATA - PI STA=41+83.81
 $\Delta=5^{\circ}30'00''$ T=275.21'
 $D=1^{\circ}00'00''$ L=550.00'
 $R=5729.58'$ E=6.61'
 S.E. = Normal Crown



INTERSECTION WITH US ROUTE 45

GENERAL PLAN
 FAU ROUTE 9545
 SECTION 19-00158-00-R5
 PROJECT NO. YXTH(139)
 SALINE COUNTY

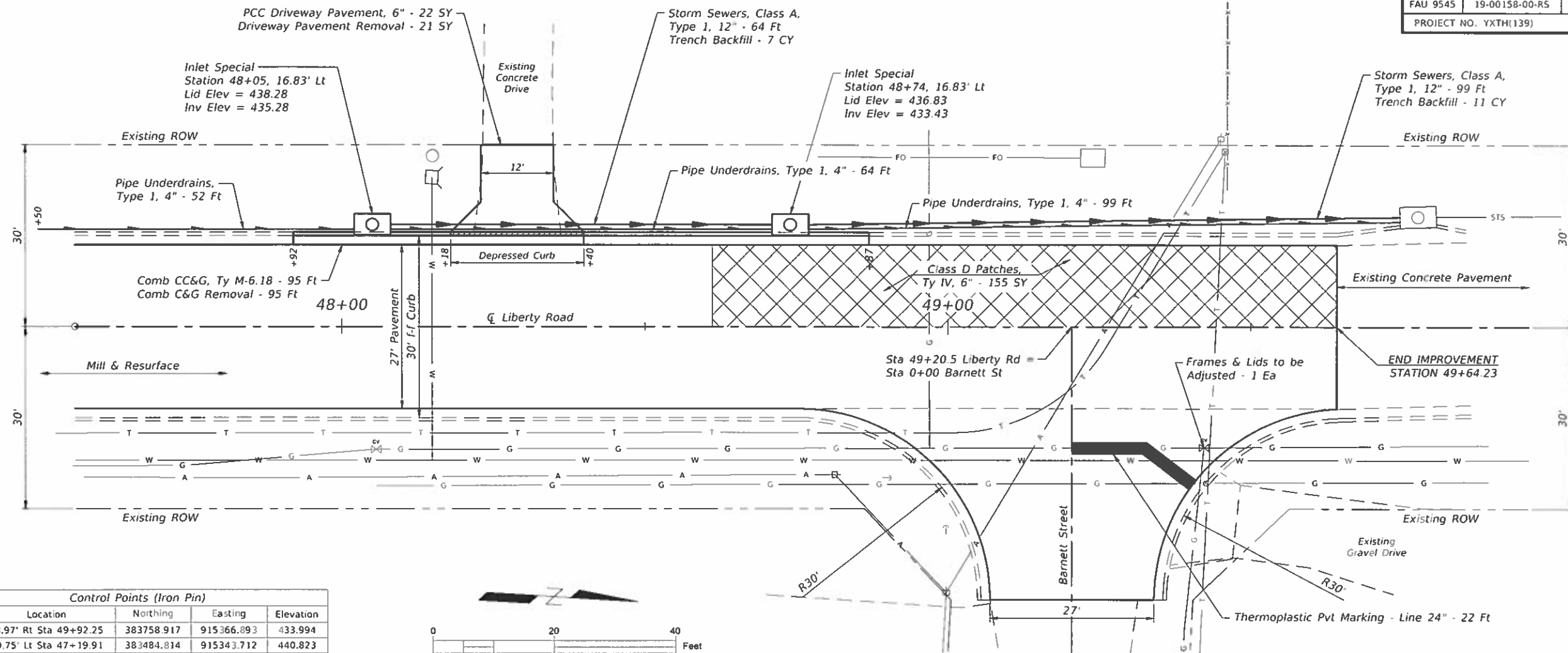
ROUTE	SECTION	COUNTY	TOTAL SHEETS	SHEET NO.
FAU 9545	19-00158-00-R5	SALINE	9	6
PROJECT NO. YXTH(139)			CONTRACT NO. 99656	



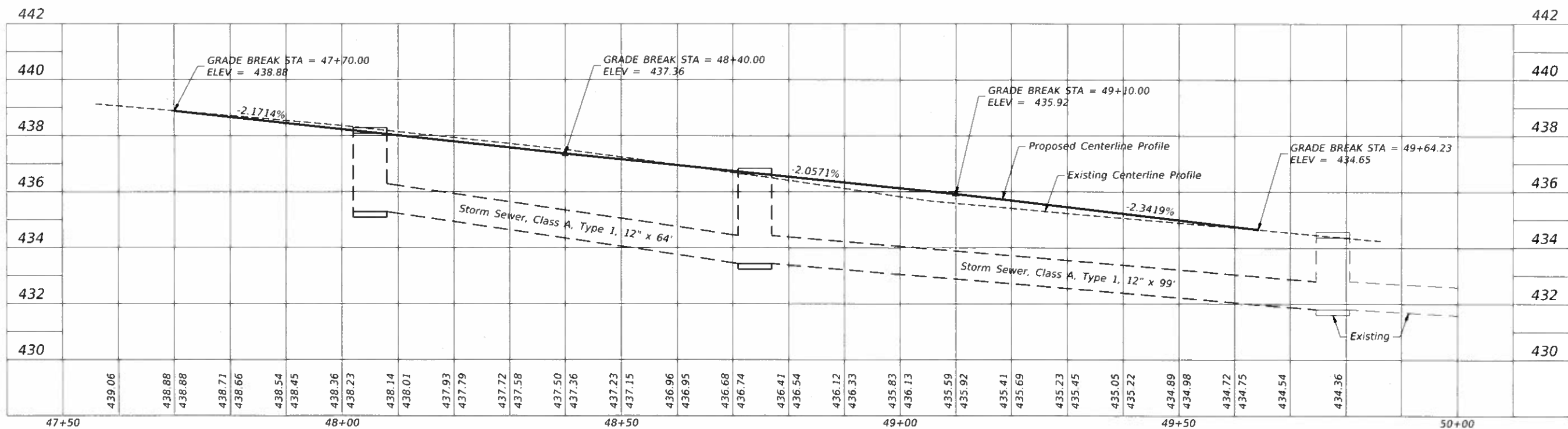
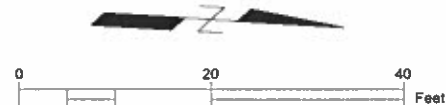
No.	Location	Northing	Easting	Elevation
3	40.23' Lt Sta 1+07.99	378875.644	915405.384	396.240
4	27.64' Lt Sta 13+73.14	380142.047	915337.972	386.650
5	22.01' Rt Sta 22+41.25	381010.195	915386.349	390.560

PLAN - ADDITIONAL INLETS
FAU ROUTE 9545
SECTION 19-00158-00-R5
PROJECT NO. YXTH(139)
SALINE COUNTY

ROUTE	SECTION	COUNTY	TOTAL SHEETS	SHEET NO.
FAU 9545	19-00158-00-R5	SALINE	9	7
PROJECT NO. YXTH(139)			CONTRACT NO. 99656	

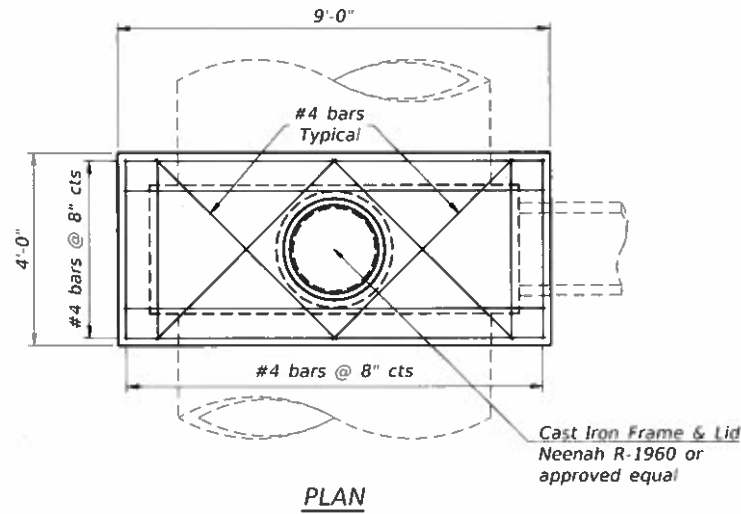


No.	Location	Northing	Easting	Elevation
1	18.97' Rt Sta 49+92.25	383758.917	915366.893	433.994
2	19.75' Lt Sta 47+19.91	383484.814	915343.712	440.823



ROUTE	SECTION	COUNTY	TOTAL SHEETS	SHEET NO.
FAU 9545	19-00158-00-RS	SALINE	9	8
PROJECT NO. YXTH(139)			CONTRACT NO. 99656	

MANHOLE, SPECIAL



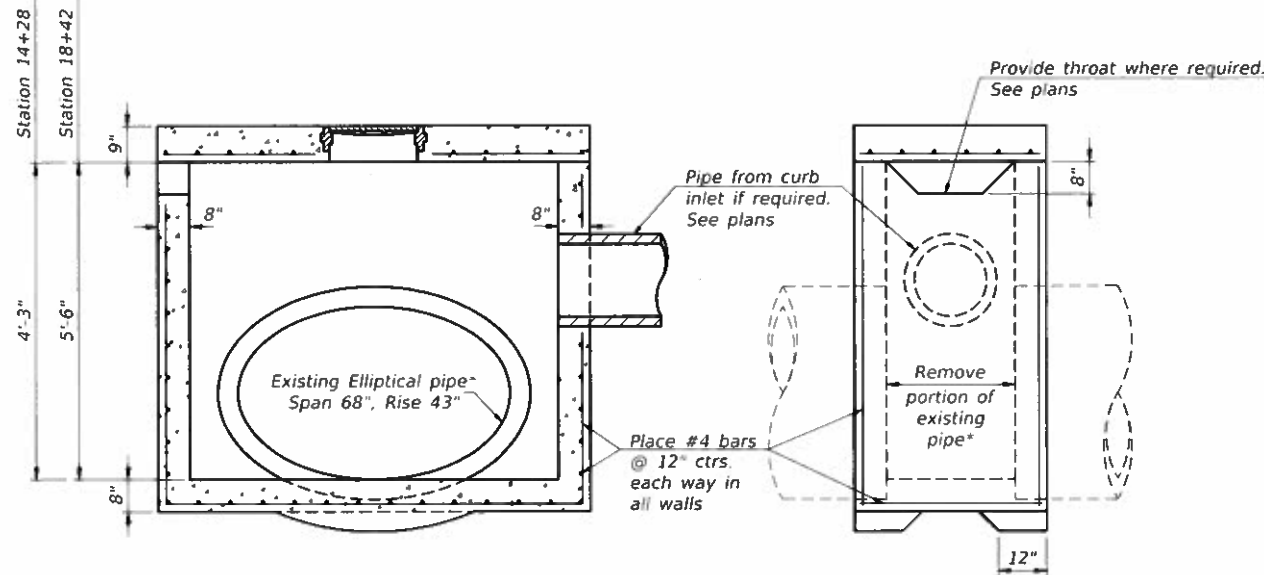
PLAN

NOTES:

Provide 1/2" clearance typ. all reinforcement unless otherwise specified.

Manholes will be paid for at the contract unit price each for MANHOLE, SPECIAL, which price shall include the Cast Iron Frame & Lid, the reinforcement bars and joint filler.

Lid and Invert elevations shown on the plans shall be adjusted as directed by the Engineer to match existing conditions.

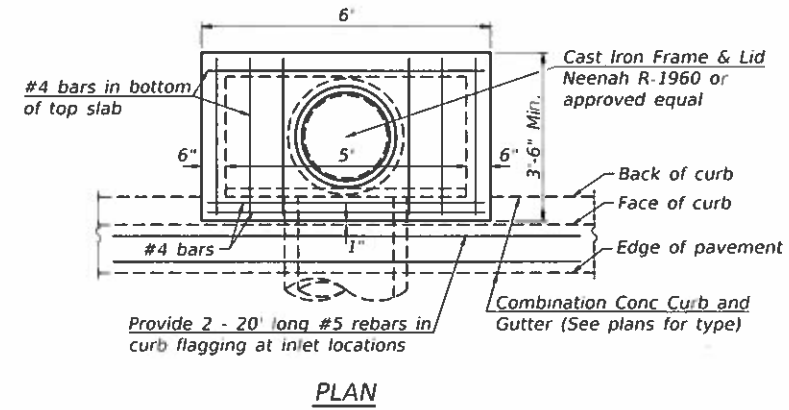


SECTION

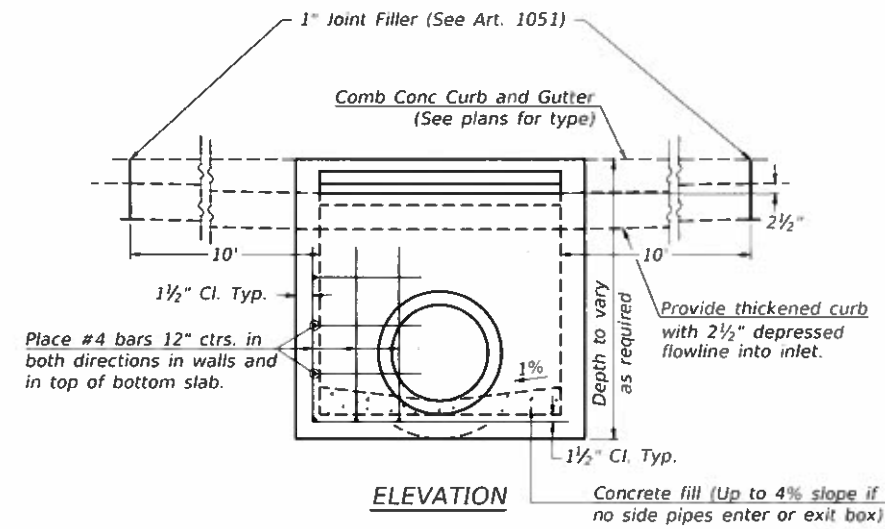
ELEVATION

* Removal of portions of the existing pipe for construction of new manhole shall be included in the contract unit price each for MANHOLE, SPECIAL.

INLET, SPECIAL



PLAN



ELEVATION

NOTES:

Provide 1/2" clearance typ. all reinforcement unless otherwise specified.

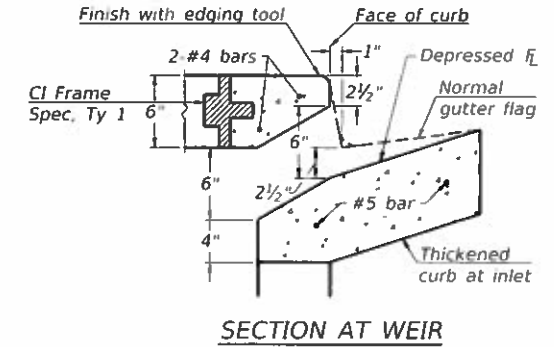
Gutter flowline at inlet 2 1/2" below normal gutter flowline. Construct transition in flowline in 10 feet each side of inlet. Pipes to be connected to inlet as shown on storm sewer layout.

Inlets will be paid for at the contract unit price each for INLETS, SPECIAL, which price shall include the Cast Iron Frame & Lid, the reinforcement bars, metal steps and joint filler.

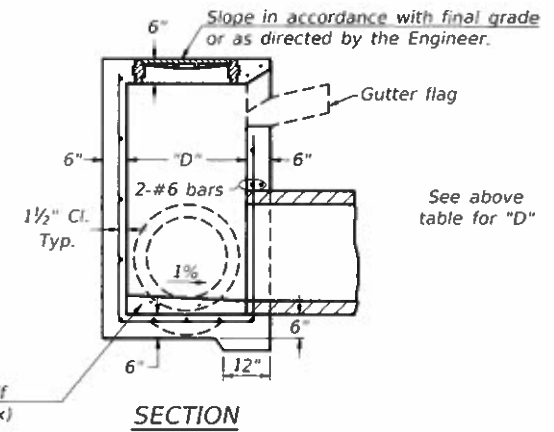
**Steps will be required at 12" spacing when inlet is over 4' deep. See Article 602.08 of the Standard Specs and details.

Cast iron steps shall be gray iron conforming to the requirements of Article 1006.14 of the Standard Specifications.

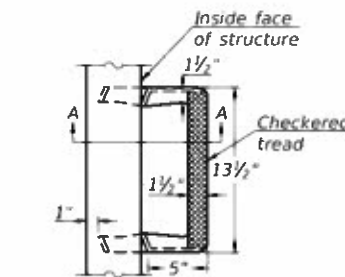
PIPE DIA	"D"
18" & Less	2'-6"
21" & 24"	3'-0"
27" & 30"	3'-7"
33" & 36"	4'-2"
42"	4'-9"
48"	5'-0"
54"	6'-1"



SECTION AT WEIR

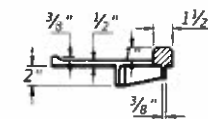


SECTION



**CAST IRON STEPS

Tread dimension details See Hwy Std 602701



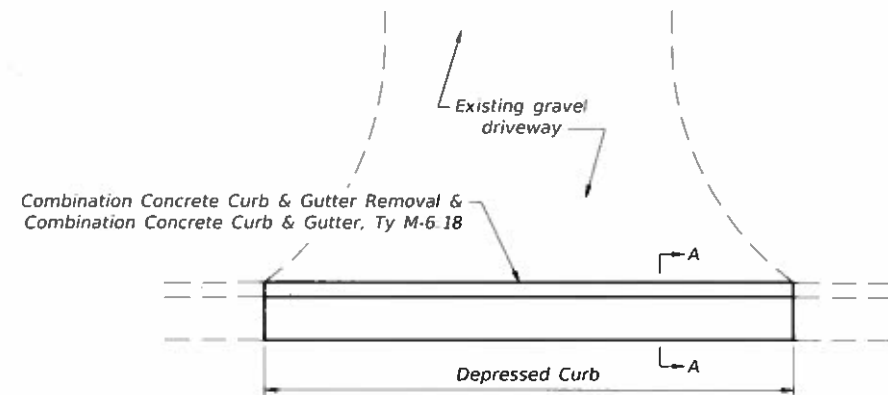
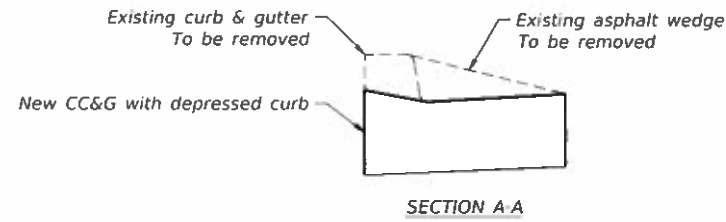
SEC. A-A

****GALVANIZED IRON STEPS**

1" Round galvanized iron steps 12" O.C. (Optional steps)

INLET, SPECIAL & MANHOLE, SPECIAL
FAU ROUTE 9545
SECTION 19-00158-00-RS
PROJECT NO. YXTH(139)
SALINE COUNTY

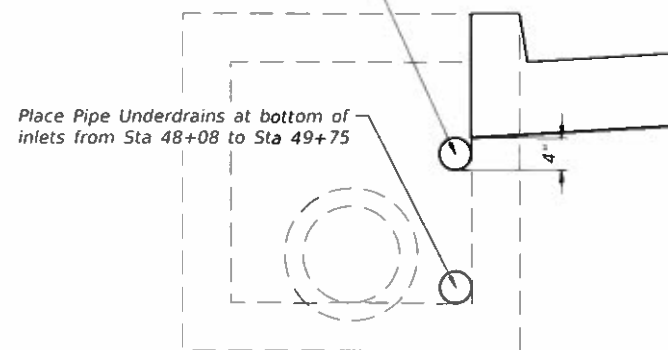
ROUTE	SECTION	COUNTY	TOTAL SHEETS	SHEET NO.
FAU 9545	19-00158-00-R5	SALINE	9	9
PROJECT NO. YXTH(139)			CONTRACT NO. 99656	



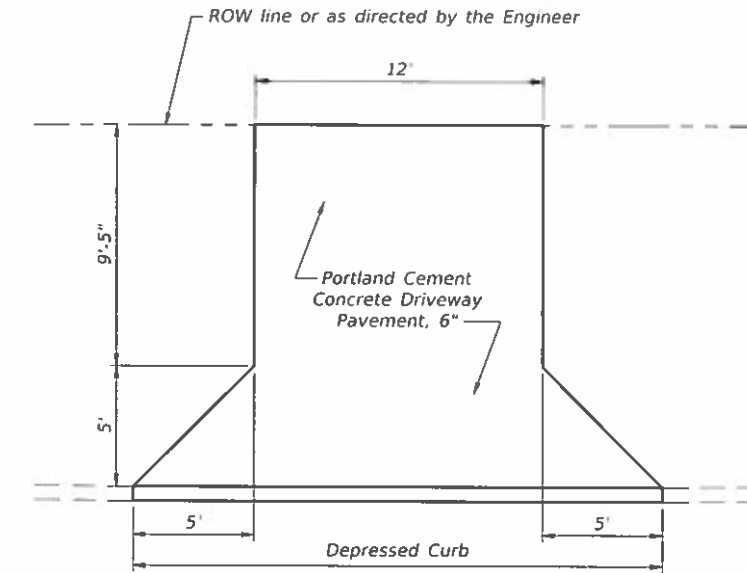
CURB & GUTTER REPLACEMENT DETAIL

Location	Foot
Sta 24+93 Lt	22
Sta 34+44 Lt	26
Sta 39+27 Lt	24

Place Pipe Underdrains 4" below back of curb & gutter from Sta 47+50 to Sta 48+02

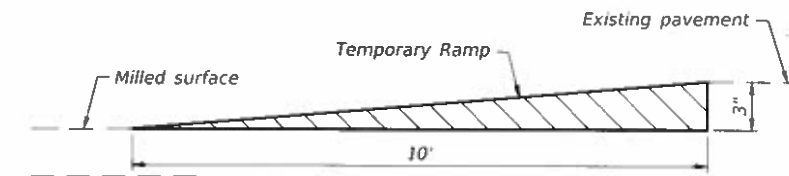


PIPE UNDERDRAINS DETAIL



PCC DRIVEWAY PAVEMENT DETAIL

(Station 48+29 Lt only)



TEMPORARY RAMP DETAIL

Location	Sq Yd
Sta 0+10.7	123
Sta 49+07 - Sta 49+34 Rt	30
Sta 49+64.23	30
Total	183

MISCELLANEOUS DETAILS
 FAU ROUTE 9545
 SECTION 19-00158-00-R5
 PROJECT NO. YXTH(139)
 SALINE COUNTY