

STATE OF ILLINOIS
DEPARTMENT OF TRANSPORTATION

**PROPOSED
HIGHWAY PLANS**

**FAU ROUTE 1467 (31ST STREET)
OVER SALT CREEK
SECTION: 2020-161-BR
PROJECT: STP-3JLU(458)
BRIDGE DECK OVERLAY AND JOINT REPAIR
COOK COUNTY**

C-91-393-20

FOR INDEX OF SHEETS, SEE SHEET NO. 2

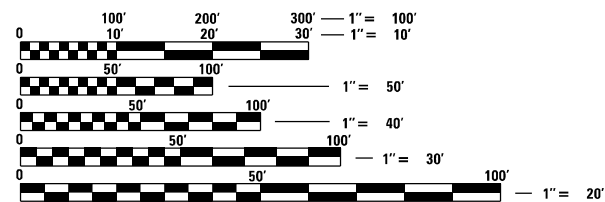
**THIS IMPROVEMENT IS LOCATED WITHIN THE
VILLAGES OF WESTCHESTER AND LAGRANGE PARK.**

DESIGN DESIGNATION
- MINOR ARTERIAL ROUTE

TRAFFIC DATA

ADT (2018) = 19400
POSTED SPEED = 40 MPH
DESIGN SPEED = 40 MPH
P.V. = 95.2% TRUCKS = 4.8%

**31ST STREET
OVER SALT CREEK
SN 016-0868**

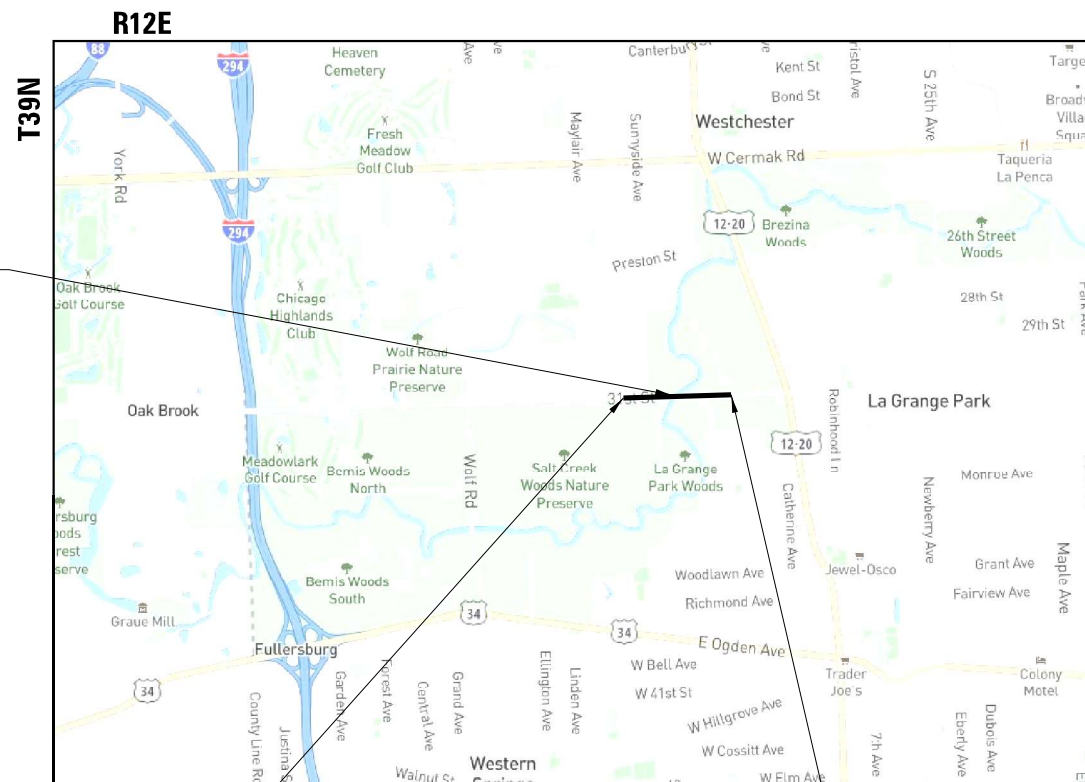


FULL SIZE PLANS HAVE BEEN PREPARED USING STANDARD ENGINEERING SCALES. REDUCED SIZED PLANS WILL NOT CONFORM TO STANDARD SCALES. IN MAKING MEASUREMENTS ON REDUCED PLANS, THE ABOVE SCALES MAY BE USED.

J.U.L.I.E.
JOINT UTILITY LOCATION INFORMATION FOR EXCAVATORS
1-800-892-0123
OR 811

PROJECT MANAGER: J. ALAIN MIDY, PE (847) 221-3056
PROJECT ENGINEER: PRAVEEN KAINI, PE (847) 705-4237

CONTRACT NO. 62M49



BEGIN IMPROVEMENT
STA 43 + 26.70

LOCATION MAP
(NOT TO SCALE)

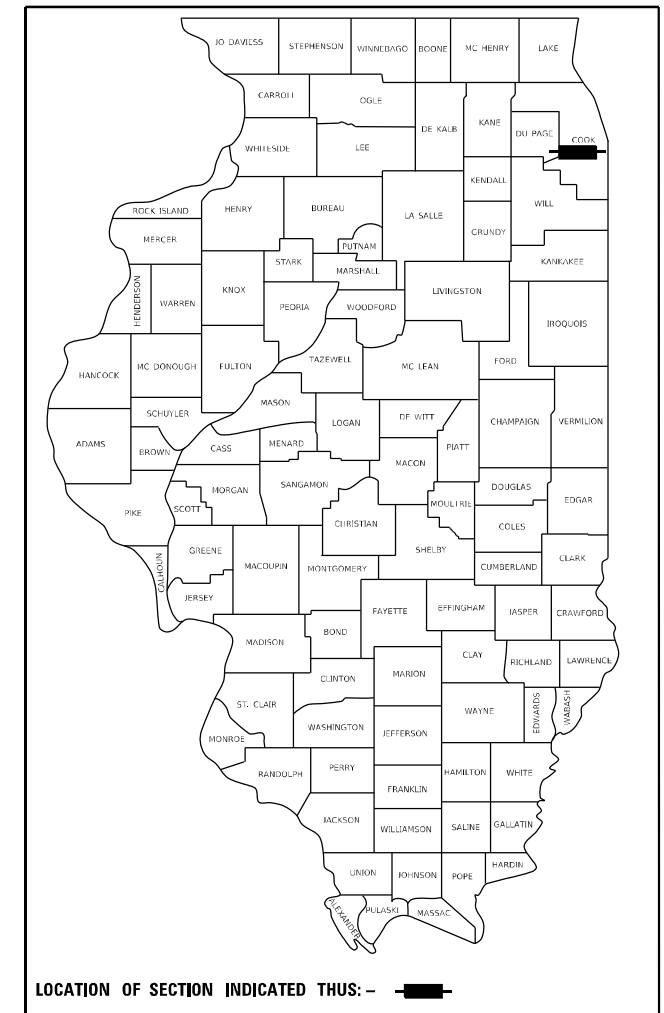
END IMPROVEMENT
STA 51 + 19.20

GROSS LENGTH = 793 FT. = 0.15 MILES
NET LENGTH = 793 FT. = 0.15 MILES

F.A.U. RTE.	SECTION	COUNTY	TOTAL SHEETS	SHEET NO.
1467	2020-161-BR	COOK	57	1
ILLINOIS			CONTRACT NO. 62M49	

* 57 + 2 = 59 TOTAL SHEETS

D-91-592-20



PHILIP J. MINGA, P.E.
062.045292
EXPIRES: 11/30/2021

STATE OF ILLINOIS
DEPARTMENT OF TRANSPORTATION

SUBMITTED December 4, 2020
Philip J. Minga REGIONAL ENGINEER

December 4, 2020
Scott A. Erickson
ENGINEER OF DESIGN AND ENVIRONMENT

December 4, 2020
James J. ...
DIRECTOR OF HIGHWAYS PROJECT IMPLEMENTATION

**PRINTED BY THE AUTHORITY
OF THE STATE OF ILLINOIS**



1111 BURLINGTON AVE., SUITE 111 - LISLE, IL 60532

INDEX OF SHEETS

- 1 COVER SHEET
- 2 INDEX OF SHEETS, HIGHWAY STANDARDS, GENERAL NOTES AND COMMITMENTS
- 3 MIX TABLE
- 4-5 SUMMARY OF QUANTITIES
- 6 TYPICAL SECTIONS
- 7 ALIGNMENT, TIES, AND BENCHMARKS
- 8 SUGGESTED MAINTENANCE OF TRAFFIC GENERAL NOTES AND TYPICAL SECTIONS
- 9-11 MAINTENANCE OF TRAFFIC - STAGE 1
- 12-14 MAINTENANCE OF TRAFFIC - STAGE 2
- 15 EXISTING AND REMOVAL PLAN
- 16-17 ROADWAY PLAN AND PROFILE
- 18 ROADWAY DETAIL
- 19-21 PAVEMENT MARKING AND SIGNING
- * 22-46 STRUCTURAL NO. 016-0868 PLANS
- 47 EXISTING STRUCTURAL NO. 016-0868 PLANS
- * 48-57 DISTRICT ONE DETAILS

* SHEETS 41A & 48A ADDED HERE 

HIGHWAY STANDARDS

STD NO.	TITLE
000001-08	STANDARD SYMBOLS, ABBREVIATIONS AND PATTERNS
001001-02	AREAS OF REINFORCEMENT BARS
001006	DECIMAL OF AN INCH AND OF A FOOT
280001-07	TEMPORARY EROSION CONTROL SYSTEMS
420001-09	PAVEMENT JOINTS
515001-04	NAME PLATE FOR BRIDGES
542001-06	CONCRETE END SECTIONS FOR PIPE CULVERTS 15" (375 mm) THRU 84" (2100 mm) DIA.
602001-02	CATCH BASIN TYPE A
602011-02	CATCH BASIN TYPE C
602401-07	PRECAST MANHOLE TYPE A, 4' (1.22 m) DIAMETER
602601-06	PRECAST REINFORCED CONCRETE FLAT SLAB TOP
602701-02	MANHOLE STEPS
604036-03	GRATE TYPE 8
604051-04	FRAME AND GRATE, TYPE 11
604091-04	FRAME AND GRATE, TYPE 24
606001-07	CONCRETE CURB TYPE B AND COMBINATION CONCRETE CURB AND GUTTER
630001-12	STEEL PLATE BEAM GUARDRAIL
630116	BACK SIDE PROTECTION OF GUARDRAIL
630301-09	SHOULDER WIDENING FOR TYPE 1 (SPECIAL) GUARDRAIL TERMINALS
631031-17	TRAFFIC BARRIER TERMINAL, TYPE 6
701101-05	OFF-RD OPERATIONS, MULTILANE, 15' (4.5 m) TO 24" (600 mm) FROM PAVEMENT EDGE
701106-02	OFF-RD OPERATIONS, MULTILANE, MORE THAN 15' (4.5 m) AWAY
701321-18	LANE CLOSURE, 2L, 2W, BRIDGE REPAIR WITH BARRIER
701427-05	LANE CLOSURE, MULTILANE, INTERMITTENT OR MOVING OPER., FOR SPEEDS ≤ 40 MPH
701501-06	URBAN LANE CLOSURE, 2L, 2W, UNDIVIDED
701602-10	URBAN LANE CLOSURE, MULTILANE, 2W WITH BIDIRECTIONAL LEFT TURN LANE
701606-10	URBAN SINGLE LANE CLOSURE, MULTILANE, 2W WITH MOUNTABLE MEDIAN
701611-01	URBAN HALF ROAD CLOSURE, MULTILANE, 2W WITH MOUNTABLE MEDIAN
701701-10	URBAN LANE CLOSURE, MULTILANE INTERSECTION
701801-06	SIDEWALK, CORNER OR CROSSWALK CLOSURE
701901-08	TRAFFIC CONTROL DEVICES
704001-08	TEMPORARY CONCRETE BARRIER
720001-01	SIGN PANEL MOUNTING DETAILS
720006-04	SIGN PANEL ERECTION DETAILS
720011-01	METAL POSTS FOR SIGNS, MARKERS AND DELINEATORS
725001-01	OBJECT AND TERMINAL MARKERS
728001-01	TELESCOPING STEEL SIGN SUPPORT
780001-05	TYPICAL PAVEMENT MARKINGS
781001-04	TYPICAL APPLICATIONS RAISED REFLECTIVE PAVEMENT MARKERS
782006-01	GUARDRAIL AND BARRIER WALL REFLECTOR MOUNTING DETAILS

GENERAL NOTES

1. ALL BORROW/WASTE/USE SITES MUST BE APPROVED BY THE DEPARTMENT PRIOR TO REMOVING ANY MATERIAL FROM THE PROJECT OR INITIATING ANY EARTH MOVING ACTIVITIES, INCLUDING TEMPORARY STOCKPILING OUTSIDE THE LIMITS OF CONSTRUCTION.
2. THE FINAL TOP FOUR INCHES OF SOIL IN ANY RIGHT-OF-WAY AREA DISTURBED BY THE CONTRACTOR MUST BE CAPABLE OF SUPPORTING VEGETATION. THE COST OF THIS WORK SHALL BE INCLUDED IN THE UNIT PRICES BID AND NO ADDITIONAL COMPENSATION WILL BE ALLOWED.
3. THE TOPSOIL EXCAVATION QUANTITIES HAVE BEEN ADJUSTED TO ALLOW FOR 15% SHRINKAGE OF TOPSOIL BETWEEN REMOVAL AND REPLACEMENT.
4. THE CONTRACTOR SHALL SEED ALL DISTURBED AREAS WITHIN THE PROJECT LIMITS. CLASS 2A SHALL BE USED.
5. MULCH, METHOD 2 SHALL BE APPLIED OVER ALL SEEDED AREAS.
6. FERTILIZER NUTRIENTS SHALL BE APPLIED AT THE RATE SPECIFIED IN SECTIONS 250 AND 252 OF THE STANDARD SPECIFICATIONS.
7. THE AREA TO BE TACKED OR PRIMED SHALL BE LIMITED TO THAT WHICH CAN BE COVERED WITH HMA ON THE NEXT DAY'S PRODUCTION, BUT NO MORE THAN FIVE (5) DAYS IN ADVANCE OF THE PLACEMENT OF THE HMA, UNLESS APPROVED BY THE ENGINEER.
8. THE CONTRACTOR SHALL SUPPLY THE RESIDENT ENGINEER WITH THE MANUFACTURER'S INSTALLATION REQUIREMENTS FOR THE TYPE OF STEEL PLATE BEAM GUARDRAIL TERMINAL TYPE 1 SPECIAL (TANGENT) OR STEEL PLATE BEAM GUARDRAIL TERMINAL TYPE I SPECIAL (FLARED).
9. THE CONTRACTOR SHALL BE RESPONSIBLE FOR COLLECTING AND MAINTAINING AN ELECTRONIC LOG OF ALL STAKEOUT SURVEY THAT IS PERFORMED ON THE JOB, EITHER BY HIM/HER OR ANY SUB-CONTRACTOR PERFORMING THE STAKEOUT. UPON REQUEST, ALL LOGS SHALL BE SUBMITTED TO THE DEPARTMENT. NO ADDITIONAL COMPENSATION WILL BE ALLOWED FOR THIS WORK, BUT SHALL BE CONSIDERED INCLUDED IN THE COST FOR CONSTRUCTION LAYOUT.
10. ON EXISTING PAVEMENT, WHICH MAY BE SUPERELEVATED, THE NEW HMA PAVEMENT SHALL BE BUILT WITH THE SAME SUPERELEVATION UNLESS NEW SUPERELEVATION RATES ARE GIVEN ON THE PLANS.
11. SEEDING WILL NOT BE PERMITTED AT ANY TIME WHEN THE GROUND IS FROZEN, WET, OR IN AN UNTILLABLE CONDITION.
12. ANY REFERENCE TO A STANDARD IN THESE PLANS SHALL BE INTERPRETED TO MEAN THE LATEST EDITION.
13. THE FOLLOWING RATES OF APPLICATION HAVE BEEN USED IN CALCULATING PLAN QUANTITIES:

ITEM	RATE	UNITS
GRANULAR MATERIALS	2.05	TONS/CU YD
14. SOIL EROSION AND SEDIMENTATION CONTROL PRACTICES AND DEVICES SHALL BE IN ACCORDANCE WITH THE LATEST EDITION OF IDOT STANDARD SPECIFICATIONS AND ALL REVISIONS THERETO AND IN ACCORDANCE WITH THE DETAILS ON THE PLANS.
15. THE RESIDENT ENGINEER SHALL CONTACT THE AREA TRAFFIC FIELD ENGINEER A MINIMUM OF TWO WEEKS PRIOR TO PLACEMENT OF PERMANENT PAVEMENT MARKINGS.

Emad Alhusseini - EMAD.ALHUSSEINI@ILLINOIS.GOV
16. THE CONTRACTOR SHALL CONTACT J.U.L.I.E. (1-800-892-0123) 48 HOURS PRIOR TO ANY WORK IN THE RIGHT OF WAY OR EASEMENTS TO LOCATE UTILITIES, AND CONTACT THE OWNER'S REPRESENTATIVE SHOULD PUBLIC UTILITIES APPEAR TO BE IN CONFLICT WITH THE PROPOSED IMPROVEMENTS.
17. IT SHALL BE THE CONTRACTOR'S RESPONSIBILITY TO VERIFY ALL DIMENSIONS AND CONDITIONS EXISTING IN THE FIELD PRIOR TO ORDERING MATERIALS AND BEGINNING CONSTRUCTION.
18. THE CONTRACTOR WILL NOT BE ALLOWED TO SET UP A YARD OR FIELD OFFICE ON STATE PROPERTY WITHOUT WRITTEN PERMISSION FROM THE DEPARTMENT.
19. THE CONTRACTOR SHALL TAKE CARE TO PROTECT ALL SIGNS ALONG THE ROUTE OF CONSTRUCTION. SIGNS SHALL BE REMOVED IF THEY ARE IN CONFLICT WITH PROPOSED WORK, AND APPROVED BY ENGINEER RED AND ALL LABOR NECESSARY TO COMPLY WITH THE RELOCATION OF SIGNS SHALL BE INCLUDED IN THE CONTRACT WITHOUT ANY EXTRA COMPENSATION ALLOWED TO THE CONTRACTOR ACCORDING TO ART. 107.25, UNLESS MARKED ON PLANS.
20. THE THICKNESS OF HMA SHOWN ON THE PLANS IS THE NOMINAL THICKNESS. DEVIATIONS FROM THE NOMINAL THICKNESS WILL BE PERMITTED WHEN SUCH DEVIATIONS OCCUR DUE TO IRREGULARITIES IN THE EXISTING SURFACE OR BASE ON WHICH THE HMA IS PLACED.
21. ALL ELEVATIONS IN THE PLANS ARE BASED UPON THE NORTH AMERICAN VERTICAL DATUM OF 1988 (NAVD88).
22. ALL REFERENCES IN THE HIGHWAY STANDARDS AND STANDARD SPECIFICATIONS FOR REINFORCEMENT, DOWEL BARS, AND TIE BARS IN PAVEMENT, SHOULDERS, CURB, GUTTER, COMBINATION CURB AND GUTTER AND MEDIAN, AND CHAIR SUPPORTS FOR CRC PAVEMENT SHALL BE EPOXY COATED UNLESS NOTED ON THE PLANS.
23. WHEN MILLED PAVEMENT IS OPEN TO TRAFFIC THE MAXIMUM GRADE DIFFERENTIAL BETWEEN PASSES OF THE MILLING MACHINE SHALL NOT EXCEED 1 1/2 INCHES WHERE THE SPEED LIMIT IS 45 MPH OR LESS WITH WRITTEN APPROVAL FROM THE ENGINEER. A MAXIMUM GRADE DIFFERENTIAL OF 3 INCHES MAY BE ALLOWED IF THE EDGE OF THE MILLING IS SLOPED A MINIMUM 1:3 V:H.
24. THE CONTRACTOR SHALL BE REQUIRED TO PROVIDE ACCESS TO ABUTTING PROPERTY AT ALL TIMES DURING THE CONSTRUCTION OF THIS PROJECT.
25. DO NOT SCALE PLANS FOR CONSTRUCTION DIMENSIONS.
26. THE DEPARTMENT HAS NOT OBTAINED ANY PERMITS FOR OFFSITE BORROW OR WASTE/USE (BWU) AREAS. PRIOR TO WORKING IN BWU AREAS, IF THE CONTRACTOR CHOOSES TO USE ACTIVITIES REQUIRING PERMITS IT IS THE CONTRACTOR'S RESPONSIBILITY TO SECURE PROPER PERMITS. IN ADDITION TO THE BORROW REVIEW (BDE 2289) AND USE/WASTE REVIEW (BDE 2290) SUBMITTALS, THE CONTRACTOR WILL NEED TO SUBMIT AN EROSION AND SEDIMENT CONTROL (ESC) PLAN FOR EVERY BWU SITE TO THE DEPARTMENT FOR ACCEPTANCE. GUIDELINES FOR ACCEPTABLE BWU PRACTICES CAN BE FOUND IN SECTION II.G.1 AND 2 OF THE SWPPP. THE COST OF ALL MATERIALS AND LABOR NECESSARY TO COMPLY WITH THE ABOVE PROVISIONS TO PREPARE AND IMPLEMENT ESC PLANS WILL NOT BE PAID FOR SEPARATELY, BUT SHALL BE CONSIDERED AS INCLUDED IN THE UNIT BID PRICES OF THE CONTRACT AND NO ADDITIONAL COMPENSATION WILL BE ALLOWED.
27. THE CONTRACTOR SHALL TAKE EXTRA CARE IN GRADING AND EXCAVATING NEAR TREES WHICH ARE NOT MARKED FOR REMOVAL SO AS NOT TO CAUSE INJURY TO THE ROOT SYSTEM OR TRUNKS/ROOTS OF A TREE THAT ARE TO REMAIN IN PLACE EXTENDING INTO THE EXCAVATION AREAS AT AN ELEVATION THAT WOULD INTERFERE WITH ANY PORTION OF THE PLANNED CONSTRUCTION. SHALL BE SEVERED AT A POINT IMMEDIATELY OUTSIDE OF THE EXCAVATION AREA THAT WILL CAUSE THE LEAST AMOUNT OF SYSTEMIC DAMAGE TO THE REMAINING TREE STRUCTURE. ANY DAMAGE DONE TO EXISTING ITEMS BY THE CONTRACTOR SHALL BE REPAIRED BY THE CONTRACTOR AT THE CONTRACTOR'S OWN EXPENSE.
28. PRUNE TREE LIMBS THAT MIGHT BE DAMAGED BY EQUIPMENT OPERATIONS AT LEAST ONE WEEK PRIOR TO THE START OF CONSTRUCTION BY A CERTIFIED ARBORIST. ANY TREE LIMBS THAT ARE BROKEN BY CONSTRUCTION EQUIPMENT AFTER THE INITIAL PRUNING MUST BE PRUNED CORRECTLY WITHIN 72 HOURS.
29. SUPPLEMENTAL WATERING IS SPECIFIED FOR TREES AND SHRUBS THAT WILL BE DISTURBED BY CONSTRUCTION BUT WILL REMAIN. NOTE THAT WATERING SHOULD BEGIN IMMEDIATELY AFTER ROOT PRUNING, TOP PRUNING OR OTHER CONSTRUCTION DISTURBANCE.
30. THAT CONTRACTOR SHALL ERECT A TEMPORARY FENCE AROUND ALL TREES WITHIN THE CONSTRUCTION AREA TO ESTABLISH A "TREE PROTECTION ZONE" BEFORE ANY WORK BEGINS OR ANY MATERIAL IS DELIVERED TO THE JOBSITE. NO WORK IS TO BE PERFORMED (OTHER THAN ROOT PRUNING), MATERIALS STORED OR VEHICLES DRIVEN OR PARKED WITHIN THE "TREE PROTECTION ZONE". REMOVE PROTECTIVE TEMPORARY FENCE ONLY AFTER ALL CONSTRUCTION WORK HAS BEEN COMPLETED.
31. ALL TREE PROTECTION, TREE REMOVAL, PRUNING, AND ROOT PRUNING SHALL BE COMPLETED BEFORE CONSTRUCTION OPERATIONS COMMENCE IN ANY AREA. AT NO TIME SHALL THE CONTRACTOR PRUNE OR REMOVE ANY TREES UNLESS SPECIFICALLY DIRECTED BY THE ENGINEER.
32. A COPY OF THE APPROVED NPDES PERMIT AND THE EROSION CONTROL PLAN SHALL BE MAINTAINED ON THE SITE AT ALL TIMES.
33. SEEDING SHALL NOT BE PERMITTED AT ANY TIME WHEN THE GROUND IS FROZEN, WET OR IN AN UNTILLABLE CONDITIONAL LOCATIONS TO BE SEEDED WILL BE DETERMINED BY THE ENGINEER.
34. ONLY THOSE TREES DESIGNATED BY THE ENGINEER OR SHOWN IN THE PLANS SHALL BE REMOVED. THE CONTRACTOR SHALL PROTECT ALL REMAINING TREES FROM DAMAGE DUE TO HIS OPERATIONS.
35. THE FINISHED EARTHWORK SHALL HAVE A VEGETATION -SUSTAINING SOIL COVERING THE TOP SIX INCHES IN AREAS TO BE SEEDED OR SODDED. THE VEGETATION-SUSTAINING SOIL REQUIRED WILL BE PAID FOR SEPARATELY AS TOPSOIL FURNISH AND PLACE, 6".
36. ANY EXISTING PAVEMENT MARKINGS IN CONFLICT WITH PROPOSED PAVEMENT MARKINGS SHALL BE REMOVED.
37. THE CONTRACTOR SHALL COORDINATE CONSTRUCTION ACTIVITIES WITH UTILITY COMPANIES AND VILLAGES OF WESTCHESTER AND LAGRANGE PARK.
38. THE CONTRACTOR SHALL BE RESPONSIBLE FOR PROTECTING UTILITY PROPERTY DURING CONSTRUCTION OPERATIONS AS OUTLINED IN ARTICLE 107.31 OF THE STANDARD SPECIFICATIONS. MEMBERS OF J.U.L.I.E. KNOWN TO BE WITHIN THE LIMITS OF THE IMPROVEMENT ARE:

COMMONWEALTH EDISON CO.
ATTN:
1919 SWIFT ROAD
OAK BROOK, IL 60523
630-424-5704

NICOR GAS
ATTN:
1844 FERRY ROAD
NAPERVILLE, IL 60563
630-388-3830
39. THE SUBGRADE STABILITY SHALL BE VERIFIED BY PROOF ROLLING WITH A FULLY LOADED TANDEM-AXEL TRUCK.
40. ANY AGGREGATE SUBGRADE IMPROVEMENT CONTAMINATED AND/OR DAMAGED BY THE CONTRACTOR'S VEHICLES AND/OR EQUIPMENT IS TO BE REMOVED AND REPLACED AS DIRECTED BY THE ENGINEER AT CONTRACTOR EXPENSE.

COMMITMENTS:

USER: idove
 C:\PLOT\Drawn\FILE NAME: PLOT_209_004_IDOT_PTB_190_14_Phase II Var-Vari-Defin\Work_Order_12\CADD\CADD_Sheets\0162M49-2ht-epnmes.dgn



PLOT DRIVER = pdfnolayersbw.pltcfgr	DESIGNED - JWD	REVISED -
PEN TABLE = D162M49-Final.tbl	DRAWN - SVJ	REVISED -
PLOT SCALE = 2.0000 ' / in.	CHECKED - PJM	REVISED -
PLOT DATE = 12/18/2020 5:47:55 PM	DATE - 09/18/2020	REVISED -

**STATE OF ILLINOIS
DEPARTMENT OF TRANSPORTATION**

INDEX OF SHEETS, HIGHWAY STANDARDS, GENERAL NOTES, AND COMMITMENTS		REVISED SHEET 12/29/2020		REV-SEP	
		SCALE: N.T.S.	SHEET OF SHEETS	STA. TO STA.	ILLINOIS FED. AID PROJECT
F.A.P. RTE. 1467	SECTION 2020-161-BR	COUNTY COOK	TOTAL SHEETS 58	SHEET NO. 2	CONTRACT NO. 62M49

SP	CODE NO.	ITEM	UNIT	CONSTRUCTION CODE	
				BRIDGE	
				0059	
				80% FEDERAL 20% STATE	
				31st STREET SN 016-0868	
				URBAN	
	20100110	TREE REMOVAL (6 TO 15 UNITS DIAMETER)	UNIT	12	
	20100210	TREE REMOVAL (OVER 15 UNITS DIAMETER)	UNIT	16	
	20101350	TREE PRUNING (OVER 10 INCH DIAMETER)	EACH	2	
	20400800	FURNISHED EXCAVATION	CU YD	220	
	21101505	TOPSOIL EXCAVATION AND PLACEMENT	CU YD	49	
	21101625	TOPSOIL FURNISH AND PLACE, 6"	SQ YD	134	
	25000210	SEEDING, CLASS 2A	ACRE	0.1	
	25000400	NITROGEN FERTILIZER NUTRIENT	POUND	8	
	25000500	PHOSPHORUS FERTILIZER NUTRIENT	POUND	8	
	25000600	POTASSIUM FERTILIZER NUTRIENT	POUND	8	
	25200110	SODDING, SALT TOLERANT	SQ YD	127	
	25200200	SUPPLEMENTAL WATERING	UNIT	4	
	28100809	STONE DUMPED RIPRAP, CLASS A5	TON	1	
	31101400	SUBBASE GRANULAR MATERIAL, TYPE B 6"	SQ YD	303	
	35400500	PORTLAND CEMENT CONCRETE BASE COURSE WIDENING 10"	SQ YD	6	
	40600290	BITUMINOUS MATERIALS (TACK COAT)	POUND	123	
	40604062	HOT-MIX ASPHALT SURFACE COURSE, 1L-9.5, MIX "D", N70	TON	30	
	42000070	PAVEMENT CONNECTOR (HMA) FOR BRIDGE APPROACH SLAB	SQ YD	363.0	
	42300200	PORTLAND CEMENT CONCRETE DRIVEWAY PAVEMENT, 6 INCH	SQ YD	54.0	
	44000100	PAVEMENT REMOVAL	SQ YD	185	
	44000157	HOT-MIX ASPHALT SURFACE REMOVAL, 2"	SQ YD	267	
	44000200	DRIVEWAY PAVEMENT REMOVAL	SQ YD	54	
	44000500	COMBINATION CURB AND GUTTER REMOVAL	FOOT	852	
	44213200	SAW CUTS	FOOT	455	
	48101620	AGGREGATE SHOULDERS, TYPE B 10"	SQ YD	440	

SP	CODE NO.	ITEM	UNIT	CONSTRUCTION CODE	
				BRIDGE	
				0059	
				80% FEDERAL 20% STATE	
				31st STREET SN 016-0868	
				URBAN	
	50102400	CONCRETE REMOVAL	CU YD	28.4	1
	50104000	BRIDGE RAIL REMOVAL	FOOT	56	
	50300225	CONCRETE STRUCTURES	CU YD	46.5	1
	50300255	CONCRETE SUPERSTRUCTURE	CU YD	32.8	
	50300260	BRIDGE DECK GROOVING	SQ YD	1152	
	50300300	PROTECTIVE COAT	SQ YD	1248	
	50301350	CONCRETE SUPERSTRUCTURE (APPROACH SLAB)	CU YD	150	
	50500405	FURNISHING AND ERECTING STRUCTURAL STEEL	POUND	7790	1
	50800205	REINFORCEMENT BARS, EPOXY COATED	POUND	74290	
	50800515	BAR SPLICERS	EACH	320	1
	50900105	ALUMINUM RAILING, TYPE L	FOOT	33	
	52000110	PREFORMED JOINT STRIP SEAL	FOOT	180	
	52100520	ANCHOR BOLTS, 1"	EACH	2	
	54261318	CONCRETE END SECTION, STANDARD 542001, 18", 1:3	EACH	1	1
	550A0380	STORM SEWERS, CLASS A, TYPE 2, 18"	FOOT	18	
	59000200	EPOXY CRACK INJECTION	FOOT	43	
	6021900	MANHOLES, TYPE A, 4' - DIAMETER, TYPE B GRATE	EACH	1	1
	60251740	CATCH BASINS TO BE ADJUSTED WITH NEW TYPE 24 FRAME AND GRATE	EACH	5	
	60605000	COMBINATION CONCRETE CURB AND GUTTER, TYPE B-6.24	FOOT	747	
	* 63000003	STEEL PLATE BEAM GUARDRAIL, TYPE A, 9 FOOT POSTS	FOOT	225	
	* 63100085	TRAFFIC BARRIER TERMINAL, TYPE 6	EACH	2	
	* 63100167	TRAFFIC BARRIER TERMINAL, TYPE 1 (SPECIAL) TANGENT	EACH	2	
	63200310	GUARDRAIL REMOVAL	FOOT	160	
	67000400	ENGINEER'S FIELD OFFICE, TYPE A	CAL MO	12	
	67100100	MOBILIZATION	L SUM	1	
	* 66900200	NON-SPECIAL WASTE DISPOSAL	CU YD	35	
	* 66900530	SOIL DISPOSAL ANALYSIS	EACH	2	
	* 66901001	REGULATED SUBSTANCES PRE-CONSTRUCTION PLAN	L SUM	1	

USER: jdrive
 PLOT DRIVER = pdfnolayersbw.pltctfg
 PEN TABLE = D162M49-Final.tbl
 PLOT SCALE = 2.0000 / in.
 PLOT DATE = 10/15/2020 3:49:48 PM
 FILE: \\nashville\plod_209_004_IDOT_PTB_190_14_Phase II Var-VariDesignWork_Order_17\CADD\CADD_Sheets\0161M49-204-005-01.dgn



DESIGNED -	REVISED -
DRAWN -	REVISED -
CHECKED -	REVISED -
DATE -	REVISED -

**STATE OF ILLINOIS
DEPARTMENT OF TRANSPORTATION**

SUMMARY OF QUANTITIES

SCALE: SHEET OF SHEETS STA. TO STA.

F.A.P. RTE.	SECTION	COUNTY	TOTAL SHEETS	SHEET NO.
1467	2020-161-BR	COOK	57	4
CONTRACT NO. 62M49			REV-SEP	
REVISED SHEET 12/29/2020				
ILLINOIS FED. AID PROJECT				

USER: jdrave
 PLOT DRIVER = pdfNOLAYERSbw.pltctfy
 FILE: \\nrcs\proj\209_004_IDOT_PTB_190_14_Phase II Var-Cap Design\Work_Order_17\CADD\CADD_Sheets\0161M49-209-004.dgn

SP	CODE NO.	ITEM	UNIT	CONSTRUCTION CODE	
				BRIDGE	
				0059	
				80% FEDERAL 20% STATE	
				31st STREET SN 016-0868	
				URBAN	
*	66901003	REGULATED SUBSTANCES FINAL CONSTRUCTION REPORT	L SUM	1	
*	66901006	REGULATED SUBSTANCES MONITORING	CAL DA	15	
	70103815	TRAFFIC CONTROL SURVEILLANCE	CAL DA	125	
	70107025	CHANGEABLE MESSAGE SIGN	CAL DA	120	
	70300900	PAVEMENT MARKING TAPE, TYPE IV - LETTERS AND SYMBOLS	SQ FT	110	
	70300904	PAVEMENT MARKING TAPE, TYPE IV 4"	FOOT	17499	
	70300906	PAVEMENT MARKING TAPE, TYPE IV 6"	FOOT	688	
	70300924	PAVEMENT MARKING TAPE, TYPE IV 24"	FOOT	141	
	70400100	TEMPORARY CONCRETE BARRIER	FOOT	675	
	70400200	RELOCATE TEMPORARY CONCRETE BARRIER	FOOT	675	
	70600305	IMPACT ATTENUATORS, TEMPORARY (FULLY REDIRECTIVE, RESETTABLE), TEST LEVEL 3	EACH	2	
	70600330	IMPACT ATTENUATORS, RELOCATE (FULLY REDIRECTIVE), TEST LEVEL 3	EACH	2	
*	72400710	RELOCATE SIGN PANEL - TYPE 1	SQ FT	41	
*	72501000	TERMINAL MARKER - DIRECT APPLIED	EACH	2	
*	72800100	TELESCOPING STEEL SIGN SUPPORT	FOOT	126	
*	78000100	THERMOPLASTIC PAVEMENT MARKING - LETTERS AND SYMBOLS	SQ FT	146	
*	78000200	THERMOPLASTIC PAVEMENT MARKING - LINE 4"	FOOT	15476	
*	78000400	THERMOPLASTIC PAVEMENT MARKING - LINE 6"	FOOT	643	
*	78000600	THERMOPLASTIC PAVEMENT MARKING - LINE 12"	FOOT	687	
*	78000650	THERMOPLASTIC PAVEMENT MARKING - LINE 24"	FOOT	50	
*	78008310	POLYUREA PAVEMENT MARKING TYPE II - LINE 4"	FOOT	1316	
*	78100300	REPLACEMENT REFLECTOR	EACH	271	
*	78200005	GUARDRAIL REFLECTORS, TYPE A	EACH	8	
	78300200	RAISED REFLECTIVE PAVEMENT MARKER REMOVAL	EACH	28	
*	X0327980	PAVEMENT MARKING REMOVAL - WATER BLASTING	SQ FT	6760	

SP	CODE NO.	ITEM	UNIT	CONSTRUCTION CODE	
				BRIDGE	
				0059	
				80% FEDERAL 20% STATE	
				31st STREET SN 016-0868	
				URBAN	
	X0322936	REMOVE EXISTING FLARED END SECTION	EACH	1	⚠
	X0327638	STREAM GAUGE	EACH	1	
	X5030530	FLOOR DRAIN EXTENSIONS	EACH	5	
	X7010216	TRAFFIC CONTROL AND PROTECTION, (SPECIAL)	LSUM	1	
	X7030005	TEMPORARY PAVEMENT MARKING REMOVAL	SQ FT	6570	
	X7040125	PINNING TEMPORARY CONCRETE BARRIER	EACH	4	
	X7830050	RAISED REFLECTIVE PAVEMENT MARKER, REFLECTOR REMOVAL	EACH	271	
	Z0001903	STRUCTURAL STEEL REMOVAL	POUND	7290	⚠
	Z0001905	STRUCTURAL STEEL REPAIR	POUND	2300	
	Z0004552	APPROACH SLAB REMOVAL	SQ YD	532	
	Z0006014	BRIDGE DECK LATEX CONCRETE OVERLAY, 2 1/2 INCHES	SQ YD	800	
<input type="checkbox"/>	Z0010605	CLEANING DRAINAGE SYSTEM	LSUM	1	
	Z0012130	BRIDGE DECK SCARIFICATION 3/4"	SQ YD	800.0	
	Z0012754	STRUCTURAL REPAIR OF CONCRETE (DEPTH EQUAL TO OR LESS THAN 5 INCHES)	SQ FT	93.0	
	Z0012755	STRUCTURAL REPAIR OF CONCRETE (DEPTH GREATER THAN 5 INCHES)	SQ FT	6.0	
	Z0013798	CONSTRUCTION LAYOUT	L SUM	1	
	Z0015550	DEBRIS REMOVAL	CU YD	60.0	
	Z0016002	DECK SLAB REPAIR (FULL DEPTH, TYPE II)	SQ YD	1.0	
	Z0018002	DRAINAGE SCUPPERS, DS-11	EACH	1.0	
	Z0007101	CONTAINMENT AND DISPOSAL OF LEAD PAINT CLEANING RESIDUES NO. 1	LSUM	1.0	⚠
	Z0073200	TEMPORARY SHORING AND CRIBBING	EACH	2.0	
	Z0030850	TEMPORARY INFORMATION SIGNING	SQ FT	52.0	
∅	Z0076600	TRAINEES	HOURS	1000	
∅	Z0076604	TRAINEES - TRAINING PROGRAM GRADUATE	HOURS	1000	

⚠ REVISED SHEET 12/29/2020

∅ 0042

NON-PART 100% STATE REV-SEP



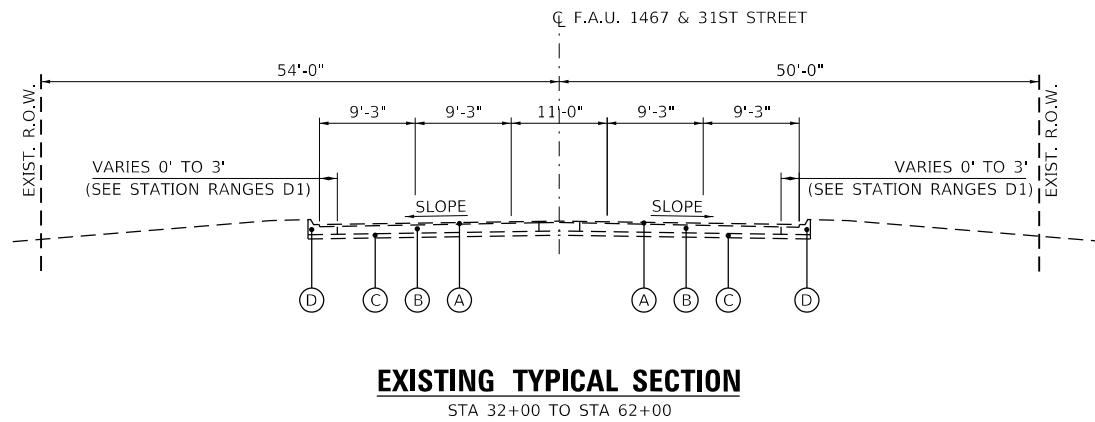
PLOT DRIVER = pdfNOLAYERSbw.pltctfy	DESIGNED -	REVISED -
PEN TABLE = D162M49-Final.tbl	DRAWN -	REVISED -
PLOT SCALE = 2.0000 / in.	CHECKED -	REVISED +
PLOT DATE = 10/15/2020 3:49:49 PM	DATE -	REVISED -

**STATE OF ILLINOIS
DEPARTMENT OF TRANSPORTATION**

SUMMARY OF QUANTITIES

SCALE: SHEET OF SHEETS STA. TO STA.

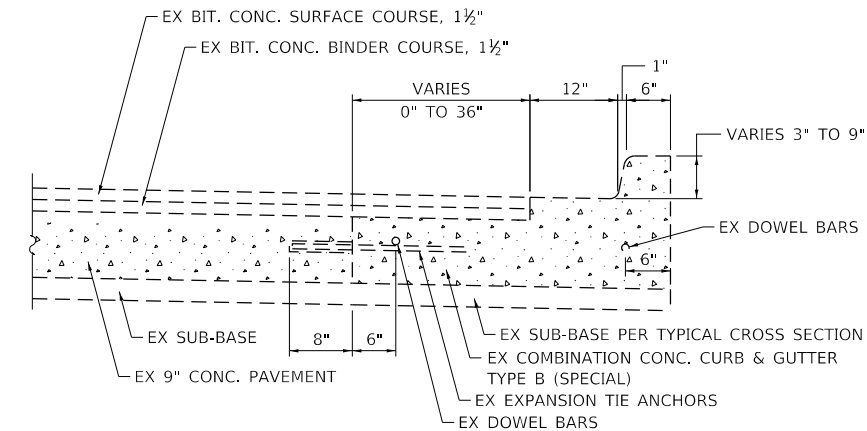
F.A.P. RTE.	SECTION	COUNTY	TOTAL SHEETS	SHEET NO.
1467	2020-161-BR	COOK	57	5
CONTRACT NO. 62M49				
ILLINOIS FED. AID PROJECT				



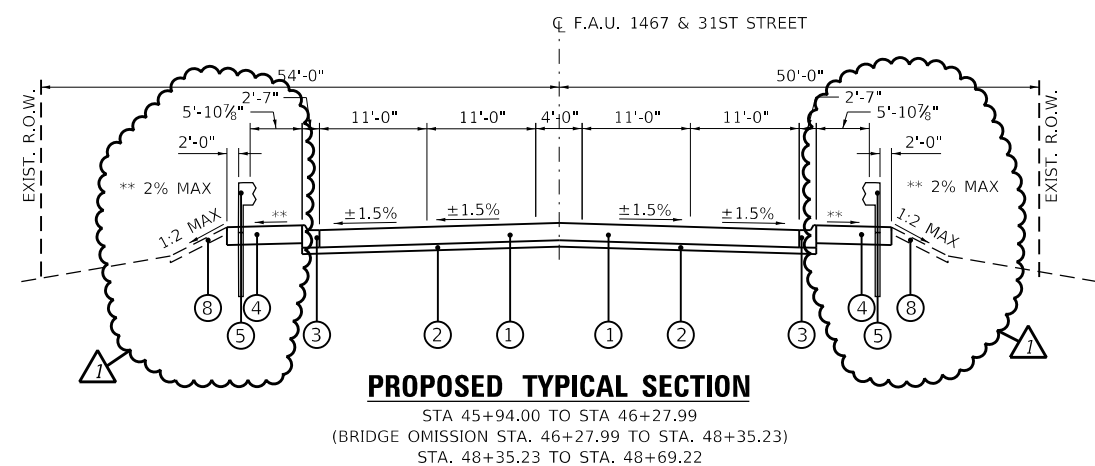
EXISTING TYPICAL SECTION
STA 32+00 TO STA 62+00

EXISTING TYPICAL SECTION

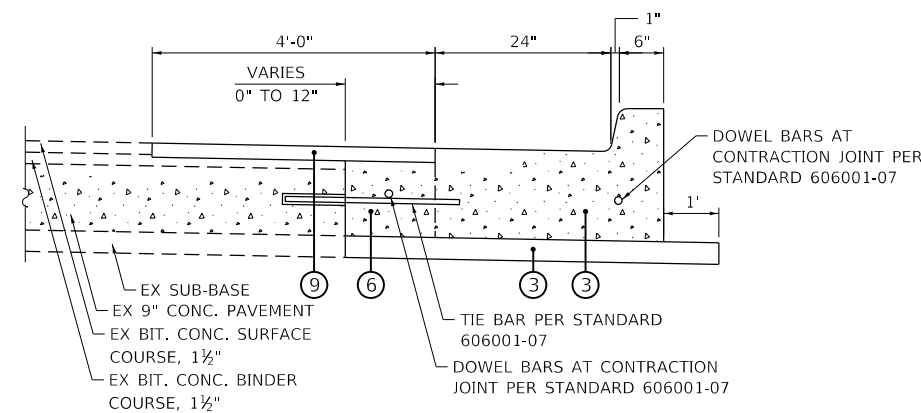
- (A) EXISTING HMA PAVEMENT (1.5" SURFACE OVER 1.5" BINDER)
- (B) EXISTING PCC PAVEMENT (9" ASSUMED)
- (C) EXISTING SUB-BASE GRANULAR MATERIAL 6"
- (D) EXISTING CURB AND GUTTER
 1. TYPE B-6.12 (SPECIAL)
STA. 44+50 TO STA. 46+11.27
STA. 48+51.93 TO STA. 50+00
 2. TYPE B-6.12



DETAIL OF EXISTING CURB & GUTTER TYPE B-6.12 (SPECIAL)

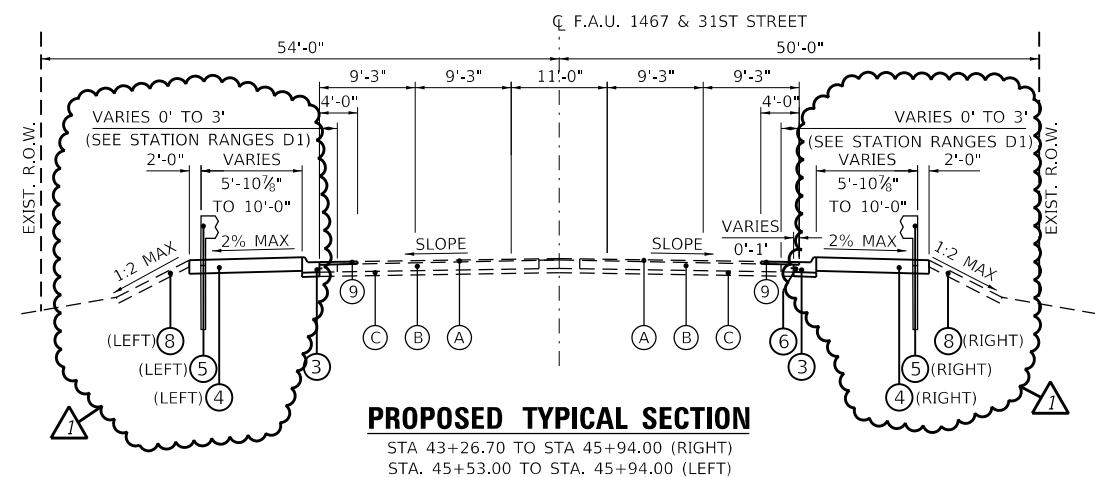


PROPOSED TYPICAL SECTION
STA 45+94.00 TO STA 46+27.99
(BRIDGE OMISSION STA. 46+27.99 TO STA. 48+35.23)
STA. 48+35.23 TO STA. 48+69.22

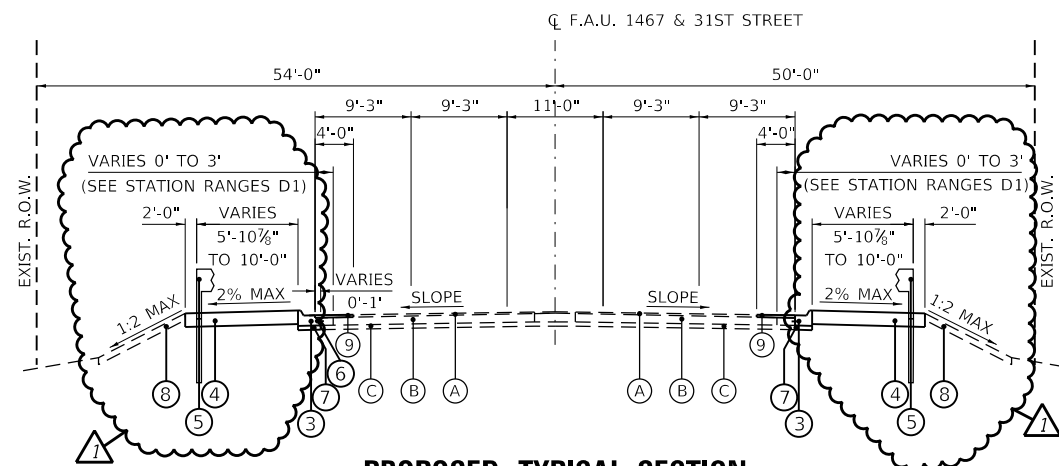


NOTE:
THE PORTLAND CEMENT CONCRETE BASE COURSE WIDENING WILL BE
POURED MONOLITHICALLY WITH THE ADJACENT COMBINATION CONCRETE
CURB AND GUTTER PER STANDARD SPECIFICATION SECTION 606.

DETAIL OF PCC BASE COURSE WIDENING



PROPOSED TYPICAL SECTION
STA 43+26.70 TO STA 45+94.00 (RIGHT)
STA. 45+53.00 TO STA. 45+94.00 (LEFT)



PROPOSED TYPICAL SECTION
STA 48+69.22 TO STA 49+10.00 (RIGHT)
STA. 48+69.22 TO STA. 51+19.20 (LEFT)

PROPOSED TYPICAL SECTION

- (1) PAVEMENT CONNECTOR (HMA) FOR BRIDGE APPROACH SLAB (42000070)
- (2) SUBBASE GRANULAR MATERIAL, TYPE B 6" (31101400)
- (3) COMBINATION CONCRETE CURB AND GUTTER, TYPE B-6.24 (60605000)
(LONGITUDINAL JOINT TIE BARS SHALL INSTALLED ADJACENT TO P.C.C BASE)
- (4) AGGREGATE SHOULDERS, TYPE B 10" (48101620)
(SEE ROADWAY PLANS FOR LOCATIONS)
- (5) STEEL PLATE BEAM GUARDRAIL, TYPE A, 9 FOOT POSTS (63000003)
(SEE ROADWAY PLANS FOR LOCATIONS)
- (6) PORTLAND CEMENT CONCRETE BASE COURSE WIDENING, 10" (35400500)
- (7) SUBBASE GRANULAR MATERIAL, TYPE B 6"
- (8) TOPSOIL FURNISH AND PLACE, 6" (21101625) AND/OR
TOPSOIL EXCAVATION AND PLACEMENT (21101505)
- (9) HOT-MIX ASPHALT SURFACE COURSE, IL-9.5, MIX "D", N70 (2 INCH) (40604062)

USER: idow
C:\PLOT\DESIGN\12182020\12182020_209_000_IDOT_PTB_190_14_Phase II_Vac-Map-Design\Work_Order_12182020\12182020_209_000-190-14-Phase II_Vac-Map-Design\Work_Order_12182020_Sheets\12182020-209-000-190-14-Phase II_Vac-Map-Design\typical.dgn



PLOT DRIVER = pdfNOLAYERSbw.pltcfp	DESIGNED - JWD	REVISED -
PEN TABLE = D162M49-Addendum.tbl	DRAWN - SVJ	REVISED -
PLOT SCALE = 20.0000' / in.	CHECKED - PJM	REVISED -
PLOT DATE = 12/18/2020 5:47:59 PM	DATE - 12/18/2020	REVISED -

DESIGNED - JWD	REVISED -
DRAWN - SVJ	REVISED -
CHECKED - PJM	REVISED -
DATE - 12/18/2020	REVISED -

STATE OF ILLINOIS
DEPARTMENT OF TRANSPORTATION

TYPICAL SECTIONS
31st STREET

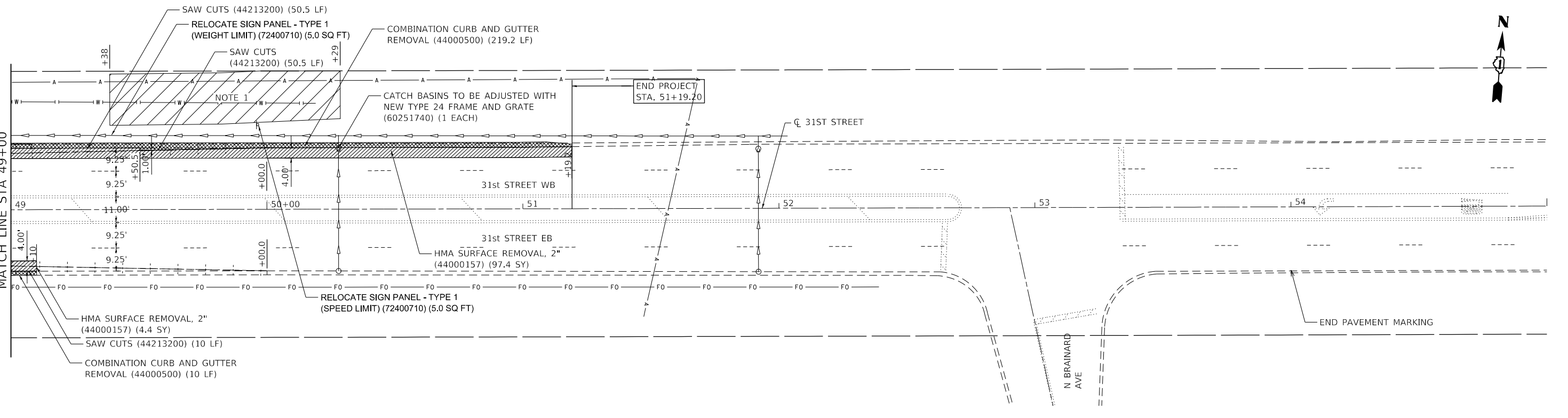
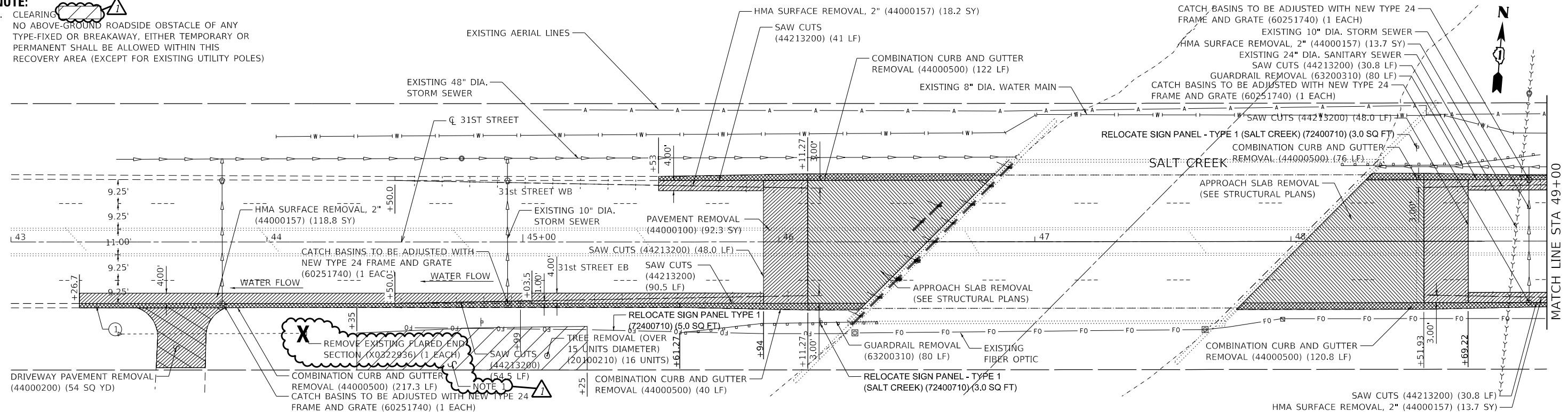
SCALE: 20.0000' / in. SHEET 1 OF 1 SHEETS STA. TO STA.

F.A.P. RTE. 1467	SECTION 2020-161-BR	COUNTY COOK	TOTAL SHEETS 57	SHEET NO. 6
CONTRACT NO. 62M49				
ILLINOIS FED. AID PROJECT				

REVISED SHEET 12/29/2020

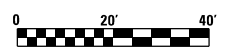
REV-SEP

NOTE:
 1. CLEARING
 NO ABOVE-GROUND ROADSIDE OBSTACLE OF ANY TYPE-FIXED OR BREAKAWAY, EITHER TEMPORARY OR PERMANENT SHALL BE ALLOWED WITHIN THIS RECOVERY AREA (EXCEPT FOR EXISTING UTILITY POLES)



LEGEND

- PAVEMENT REMOVAL
- APPROACH SLAB REMOVAL
- CURB AND GUTTER REMOVAL
- DRIVEWAY PAVEMENT REMOVAL



REVISED SHEET 12/29/2020

USER: idow
 PLOT FILE: D:\1162M49-Addendum.tbl
 FILE NAME: PLOT_209_000_IDOT_PTB_190_114_Phase II_Vac-Map-Design-Work_Order_12\CADD\CADD_Sheets\1162M49-Addendum.tbl

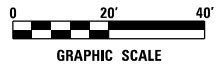


PLOT DRIVER = pdfNOLAYERSbw.pltcf	DESIGNED - JWD	REVISED -
PEN TABLE = D162M49-Addendum.tbl	DRAWN - SVJ	REVISED -
PLOT SCALE = 40.0000' / in.	CHECKED - PJM	REVISED -
PLOT DATE = 12/18/2020 5:48:00 PM	DATE - 12/18/2020	REVISED -

**STATE OF ILLINOIS
 DEPARTMENT OF TRANSPORTATION**

**EXISTING AND REMOVAL PLAN
 31st STREET**
 SCALE: 40.0000' / in. SHEET 1 OF 1 SHEETS STA. 43+00 TO STA. 55+00

F.A.P. RTE.	SECTION	COUNTY	TOTAL SHEETS	SHEET NO.
1467	2020-161-BR	COOK	57	15
CONTRACT NO. 62M49				
ILLINOIS FED. AID PROJECT				

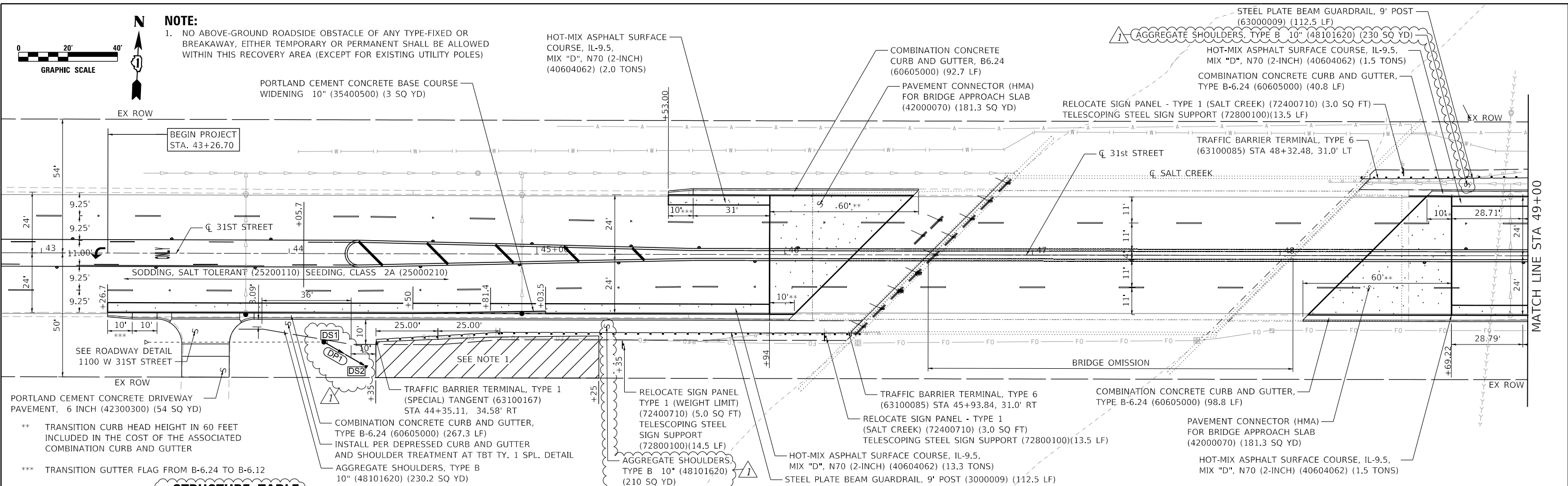


NOTE:

1. NO ABOVE-GROUND ROADSIDE OBSTACLE OF ANY TYPE-FIXED OR BREAKAWAY, EITHER TEMPORARY OR PERMANENT SHALL BE ALLOWED WITHIN THIS RECOVERY AREA (EXCEPT FOR EXISTING UTILITY POLES)

PLAN	SURVEYED	DATE
	PLOTTED	
	ALIGNED	
	CHECKED	
	DATE	
	BY	
	NO.	

PROFILE	SURVEYED	DATE
	PLOTTED	
	GRADES	
	CHECKED	
	DATE	
	BY	
	NO.	

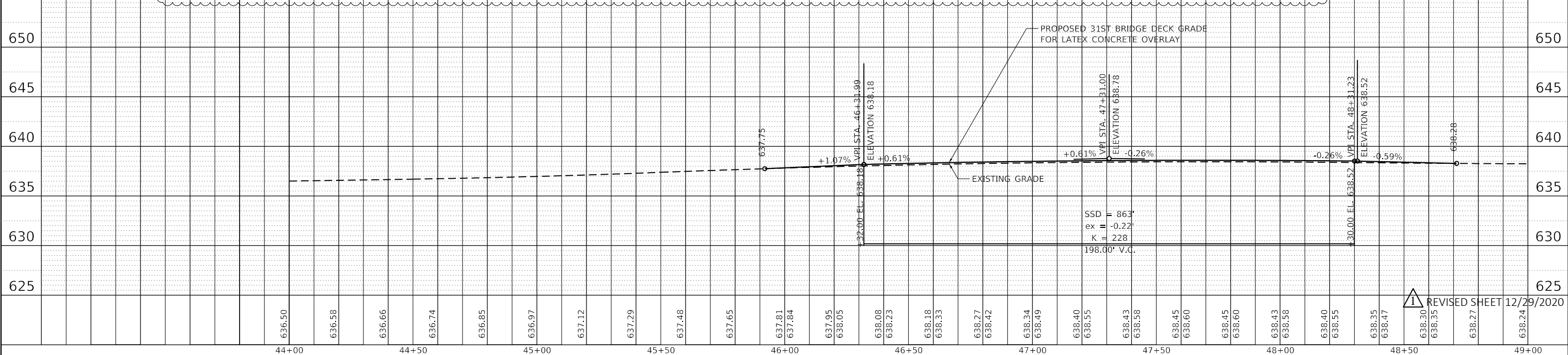


STRUCTURE TABLE

STRUCTURE ID	ALIGNMENT	STATION	OFFSET	RIM ELEV. (FT.)	INVERT ELEVATION (FT)				PAY ITEM	DESCRIPTION	STANDARD DETAIL
					W	N	E	S			
DS1	31st ST	44+14	35.7' RT	636.5	633.28	-	633.18	-	60219000	MANHOLES, TYPE A, 4'-DIAMETER, TYPE 8 GRATE	602401-07, 602601-06, 602701-02, & 604036-03
DS2	31st ST	44+30	45.0' RT	-	633.07	-	-	-	54261318	CONCRETE END SECTION, STANDARD 542001, 18", 1:3	542001-06

PIPE TABLE

PIPE ID	UPSTREAM STRUCTURE	DOWNSTREAM STRUCTURE	UPSTREAM INVERT	DOWNSTREAM INVERT	SLOPE	LENGTH (FOOT)	DIAMETER (INCH)	MATERIAL	TYPE	CLASS	PAY ITEM	DESCRIPTION	TRENCH BACKFILL (CU YD)
DP1	DS1	DS2	633.18	633.07	0.56%	18	18	RCCP	2	A	550A0380	STORM SEWERS, CLASS A, TYPE 2 18"	0



PLOT DRIVER = pdfNOLAYERSbw.pltctf	DESIGNED - JWD	REVISED -
PEN TABLE = D162M49-Addendum.tbl	DRAWN - SVJ	REVISED -
PLOT SCALE = 40.0000 ' / in.	CHECKED - PJM	REVISED -
PLOT DATE = 12/18/2020 5:48:01 PM	DATE - 12/18/2020	REVISED -

STATE OF ILLINOIS
DEPARTMENT OF TRANSPORTATION

ROADWAY PLAN AND PROFILE
31st STREET

SCALE: 40.0000 ' / in. SHEET 1 OF 2 SHEETS STA. 43+00 TO STA. 49+00

F.A. RTE. 1467	SECTION 2020-161-BR	COUNTY COOK	TOTAL SHEETS 57	SHEET NO. 16
CONTRACT NO. 62M49				ILLINOIS FED. AID PROJECT

REVISED SHEET 12/29/2020

Benchmark: Survey Marker at midspan of North Parapet. Elev. 640.7

Existing Structure: Structure No. 016-0868 was constructed in 1927 and reconstructed in 1984. The structure has a length of 148'-8" (back-to-back of abutments) and an out-to-out deck width of 64'-0". The superstructure consists of a 7½"-thick reinforced concrete deck supported on three-span continuous rolled steel beams with span lengths of 46'-9¾", 48'-0" and 46'-9¾". The substructure consists of reinforced concrete abutments and wall piers.

Traffic is to be maintained utilizing stage construction.

Salvage: Wood Cribbing at Abutments. See General Notes.

DESIGN STRESSES

FIELD UNITS

f'c = 3,500 psi
 f'c = 4,000 psi (Superstructure Concrete)
 fy = 60,000 psi (Reinforcement)
 fy = 50,000 psi (Structural Steel AASHTO M 270 Grade 50)
RECONSTRUCTION (1985)

f'c = 3,500 psi
 fy = 60,000 psi (Reinforcement)
 fy = 36,000 psi (Structural Steel AASHTO M 183)
 fy = 50,000 psi (Structural Steel AASHTO M 223)
ORIGINAL CONSTRUCTION (1927)

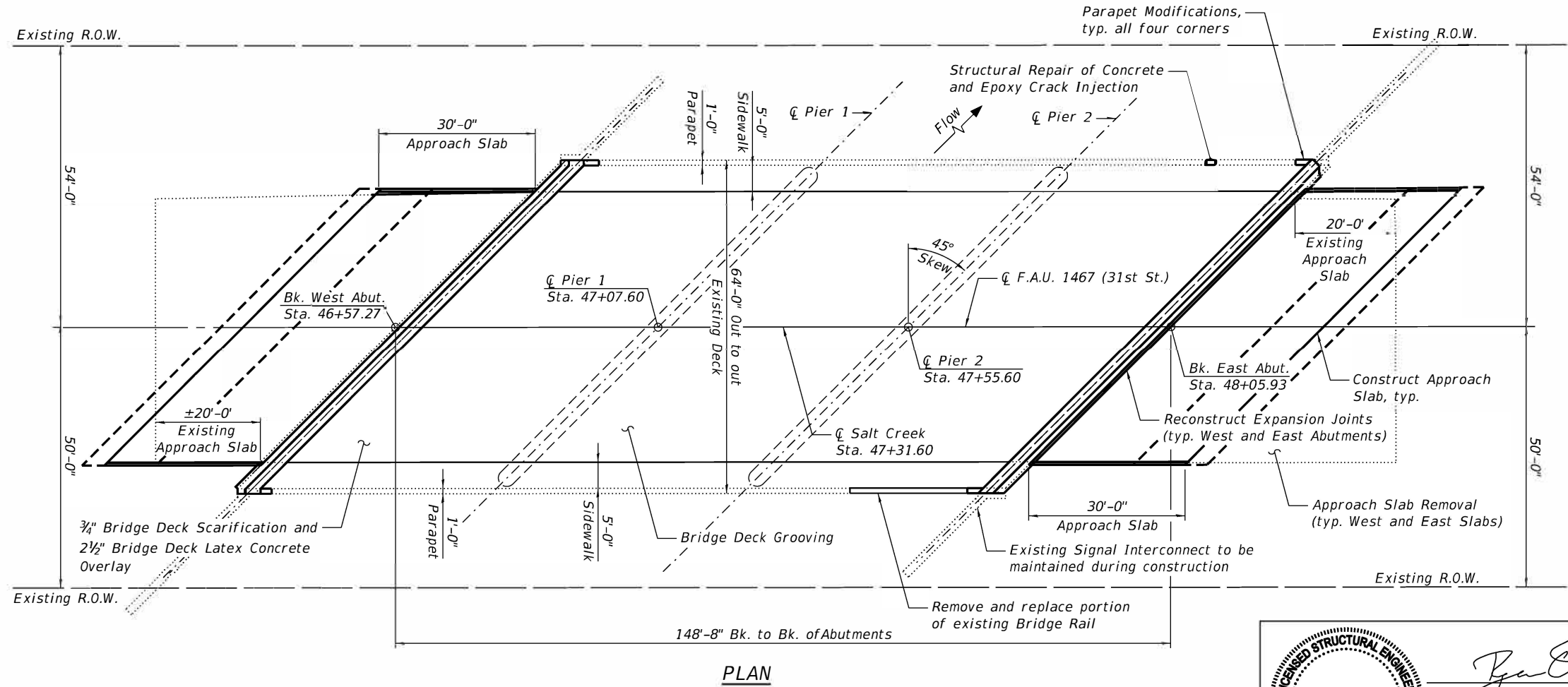
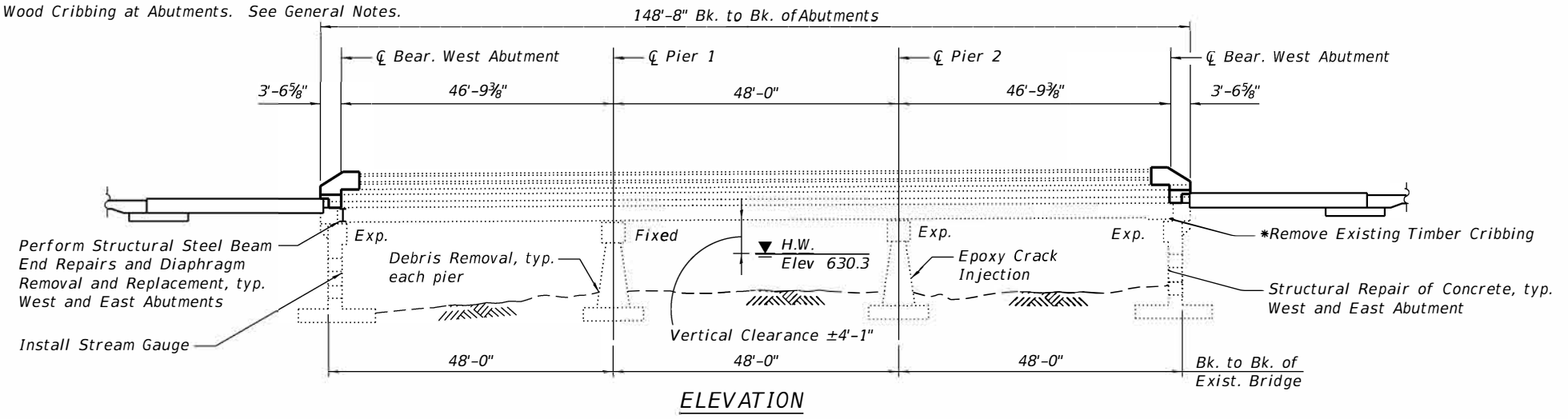
f'c = 3,000 psi
 fy = 40,000 psi (Reinforcement)

DESIGN SPECIFICATIONS

2002 AASHTO Standard Specifications for Highway Bridges, 17th Edition

INDEX OF SHEETS

- S-01 General Plan and Elevation
- S-02 General Data
- S-03 Stage Construction Details (1 of 2)
- S-04 Stage Construction Details (2 of 2)
- S-05 Temporary Concrete Barrier for Stage Construction
- S-06 Top of Approach Slab Elevations
- S-07 Deck Repair Plan
- S-08 Drainage Scupper, DS-11
- S-09 East and West Approach Slab Details (1 of 2)
- S-10 East and West Approach Slab Details (2 of 2)
- S-11 Parapet and Railing Repairs (1 of 2)
- S-12 Parapet and Railing Repairs (2 of 2)
- S-13 Aluminum Railing, Type L
- S-14 West Abutment Joint Removal and Reconstruction
- S-15 East Abutment Joint Removal and Reconstruction
- S-16 Preformed Joint Strip Seal - Sidewalk (1 of 3)
- S-17 Preformed Joint Strip Seal - Sidewalk (2 of 3)
- S-18 Preformed Joint Strip Seal - Sidewalk (3 of 3)
- S-19 Framing Plan
- S-20 Diaphragm Replacement Details
- S-20A Diaphragm Replacement Details
- S-21 Beam Repair Details
- S-22 Bearing Repair Details
- S-23 West and East Abutment Repair Details
- S-24 Pier Repair Details
- S-25 Bar Splicer Assembly and Mechanical Splicer Assembly Details
- S-26 Existing General Plan and Elevation



NOTE:
 Dimension and Clearances shown are from existing drawings.

Licensed Structural Engineer
 RYAN R. DOERRER
 081-007941
 STATE OF ILLINOIS

Ryan R. Doerr
 RYAN R. DOERRER

11/20/2020 DATE 11/30/2022 EXPIRES

GENERAL PLAN AND ELEVATION
 31st STREET OVER
 SALT CREEK
 SECTION 2020-161-BR
 COOK COUNTY
 STATION 47+13.60
 STRUCTURE NO. 016-0868

MODEL: Default
 FILE NAME: P:\02_209_004_IDOT_PTB_190_14_Phase II Var-Van\Design\Work Order 12\CADD\CADD_Sheets\162M49-shr-bridge-01gpe.dgn
 12/22/2020 2:01:36 PM

	USER NAME = RyanDoerr	DESIGNED - JES	REVISED -	STATE OF ILLINOIS DEPARTMENT OF TRANSPORTATION	GENERAL PLAN AND ELEVATION STRUCTURE NO. 016-0868	F.A.U. RTE. = 1467	SECTION = 2020-161-BR	COUNTY = COOK	TOTAL SHEETS = 58	SHEET NO. = 22
	PLOT SCALE = 26:0' = 1" / in.	DRAWN - SVJ	REVISED -			SHEET 5-01 OF 5-26 SHEETS	ILLINOIS FED. AID PROJECT			
	PLOT DATE = 12/22/2020	DATE = 12/02/2020	REVISED -			CONTRACT NO. 62M49				

REVISED SHEET 12/29/2020

GENERAL NOTES

No field welding is permitted except as specified in the contract documents. Reinforcement bars designated (E) shall be epoxy coated.

Prior to pouring the new concrete deck, all heavy or loose rust, loose mill scale, and other loose or potentially detrimental foreign material shall be removed from the surfaces in contact with concrete. Tightly adhered paint may remain unless otherwise noted. Removal shall be accomplished by methods that will not damage the steel and the cost will be included in the pay item covering removal of the existing concrete.

As directed by the Engineer, existing construction accessories welded to the top flange of beams and girders shall be removed. The weld areas shall be ground flush and inspected for cracks using magnetic particle testing (MT) or dye penetrant testing (PT) by qualified personnel approved by the Engineer.

Any cracks that cannot be removed by grinding 1/4 inch deep shall be identified and reported to the Bureau of Bridges and Structures for further disposition. The cost of removing welded accessories, grinding and inspecting weld areas and grinding cracks will be paid for according to Article 109.04 of the Standard Specifications.

Plan dimensions and details relative to existing plans are subject to nominal construction variations. The Contractor shall field verify existing dimensions and details affecting new construction and make necessary approved adjustments prior to construction or ordering of materials. Such variations shall not be cause for additional compensation for a change in scope of the work, however, the Contractor will be paid for the quantity actually furnished at the unit price bid for the work.

Proposed elevations are based on the existing drawing profile and adjusted to account for the proposed overlay.

Fasteners shall be ASTM F 3125 Grade A352 Type 1. Fastener shall be hot dip galvanized. See Special Provision for "Hot Dip Galvanizing for Structural Steel." Bolts 3/4 in. Φ holes 1 1/16 in. Φ, unless otherwise noted.

All new structural steel shall be galvanized. See Special Provision for "Hot Dip Galvanizing for Structural Steel."

Existing structural steel that will be in contact with new structural steel shall be cleaned and painted prior to erection as required by the Special Provision "Cleaning and Painting Contact Surface Areas of Existing Steel Structures."

The existing structural steel coating contains lead. The contractor shall take appropriate precautions to deal with the presence of lead on this project.

It is the Contractor's responsibility to temporarily support the existing signal interconnect and all other utilities interfering with proposed work, as required. Embedment in the south parapet shall be reestablished. Cost included in Concrete Superstructure.

The contractor shall exercise caution during removal and construction operations to avoid damaging the existing signal interconnect and all other utilities. Any damage to the signal interconnect or other utilities caused by the Contractor in the performance of their work shall be repaired by the Contractor, to the satisfaction of the Engineer, at no cost to the Department.

All exposed concrete edges shall have a 3/4" x 45 degree chamfer except where shown otherwise.

Debris shall be removed from the tops of the pier caps, tops of abutment caps and with the channel as specified by the Engineer in the field and shall be included in the cost of Debris Removal. Quantities are estimated and actual quantities and locations will be determined in the field, at the time of construction by the Engineer.

The contractor shall salvage the wood cribbing supporting some of the abutment beam ends and diaphragms. The wood cribbing shall be transported, unloaded, and stacked by the Contractor to the District Bridge Yard in Elk Grove at 1101 Biesterfield Road during the week days of Monday-Friday, and between the hours of 8am and 2pm. The Contractor shall notify the District Bridge Office 48 hours in advance of the delivery at (847) 956-1443. Cost included in Structural Steel Removal.

Joint openings shall be adjusted according with Article 520.04 of the Standard Specs. when the deck is poured at an ambient temperature other than 50° F.

Expansion joint shall be fabricated to conform to the existing cross-slopes of the bridge.

SCOPE OF WORK

1. Perform 3/4" Bridge Deck Scarification.
2. Perform Deck slab repairs as required.
3. Reconstruct bridge deck expansion joints at the West and East Abutments. Install New preformed joints Strip Seal.
4. Perform Parapet Repair and Partial Removal/ Replacement of railing as required.
5. Apply a 2 1/2" Bridge Deck Latex Concrete Overlay on Bridge Deck.
6. Perform Bridge Deck Grooving.
7. Remove and reconstruct the West and East Approach Slabs.
8. Apply Protective Coat to the top and inside faces of parapets, sidewalks, reconstructed transverse expansion joints, surface of the new overlay and both approach slabs.
9. Perform Structural Steel Beam End Repairs and diaphragm removal and replacement at the locations shown in the drawings.
10. Perform Structural Repair of Concrete and Epoxy Crack Injection to the abutments and Piers as shown in the drawings.
11. Install Stream Gauge.
12. Clean Bridge Seats and remove channel debris.

TOTAL BILL OF MATERIAL

ITEM	UNIT	SUPER	SUB	TOTAL
Stone Dumped Riprap, Class A5	TON	0	1	1
Concrete Removal	CU YD	28.4	0	28.4
Bridge Rail Removal	FOOT	56	0	56
Concrete Structures	CU YD	46.5	0	46.5
Concrete Superstructure	CU YD	32.8	0	32.8
Bridge Deck Grooving	SQ YD	1,152	0	1,152
Protective Coat	SQ YD	1,248	0	1,248
Concrete Superstructure (Approach Slab)	CU YD	150.0	0	150.0
Furnishing And Erecting Structural Steel	POUND	7,770	20	7,790
Reinforcement Bars, Epoxy Coated	POUND	74,290	0	74,290
Bar Splicers	EACH	320	0	320
Aluminum Railing, Type L	FOOT	33	0	33
Preformed Joint Strip Seal	FOOT	180	0	180
Anchor Bolts, 1"	EACH	0	2	2
Epoxy Crack Injection	FOOT	14	29	43
Stream Gauge	EACH	0	1	1
Floor Drain Extensions	EACH	5	0	5
Structural Steel Removal	POUND	7,290	0	7,290
Structural Steel Repair	POUND	2,300	0	2,300
Approach Slab Removal	SQ YD	532	0	532
Bridge Deck Latex Concrete Overlay, 2 1/2 Inches	SQ YD	800	0	800
Cleaning Drainage System	L SUM	1	0	1
Bridge Deck Scarification 3/4"	SQ YD	800	0	800
Structural Repair Of Concrete (Depth Equal To Or Less Than 5 Inches)	SQ FT	0	93	93
Structural Repair Of Concrete (Depth Greater Than 5 Inches)	SQ FT	3	3	6
Debris Removal	CU YD	0	60	60
Deck Slab Repair (Full Depth, Type II)	SQ YD	1	0	1
Drainage Scuppers, DS-11	EACH	1	0	1
Temporary Shoring and Cribbing	EACH	0	2	2

MODEL: Default
FILE NAME: P:\02_209_004_IDOT_PTB_190_14_Phase II Var-Van\Design\Work_Order_12\CADD\CADD_Sheets\162M49-shr-bridge-02gendata.dgn



USER NAME = RyanDoerrler	DESIGNED - JES	REVISED -
PLOT SCALE= 0:2.0000 ' : ' / in.	CHECKED - RRD	REVISED -
PLOT DATE = 12/22/2020	DRAWN - SVJ	REVISED -
	DATE - 12/02/2020	REVISED -

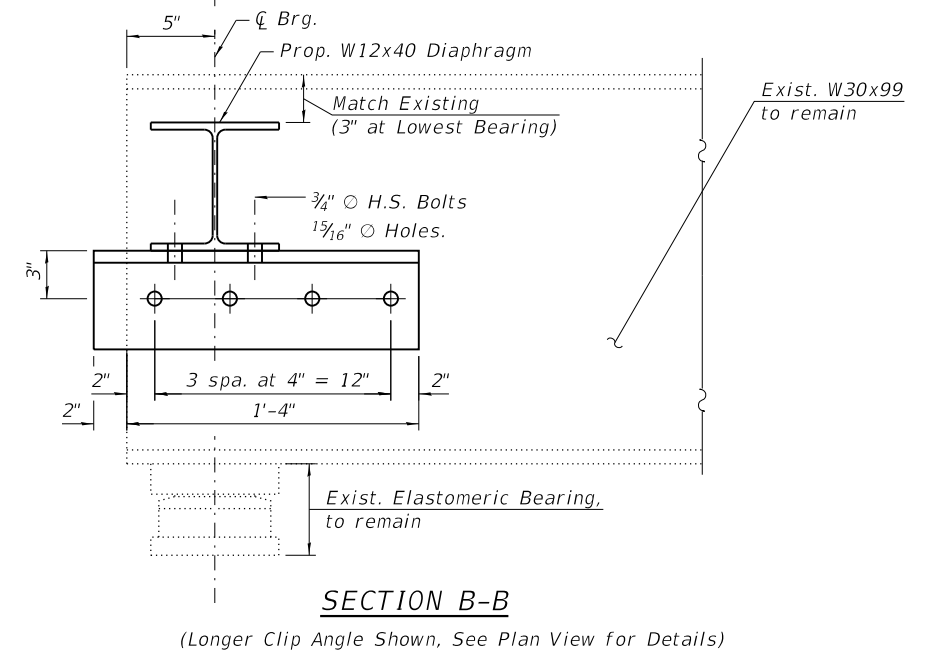
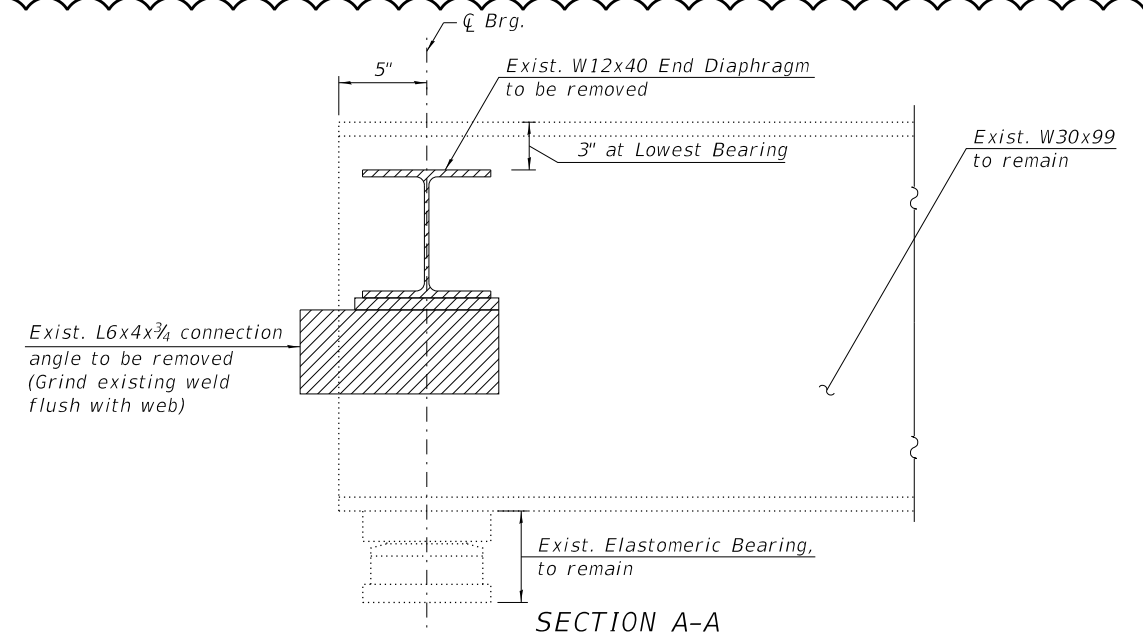
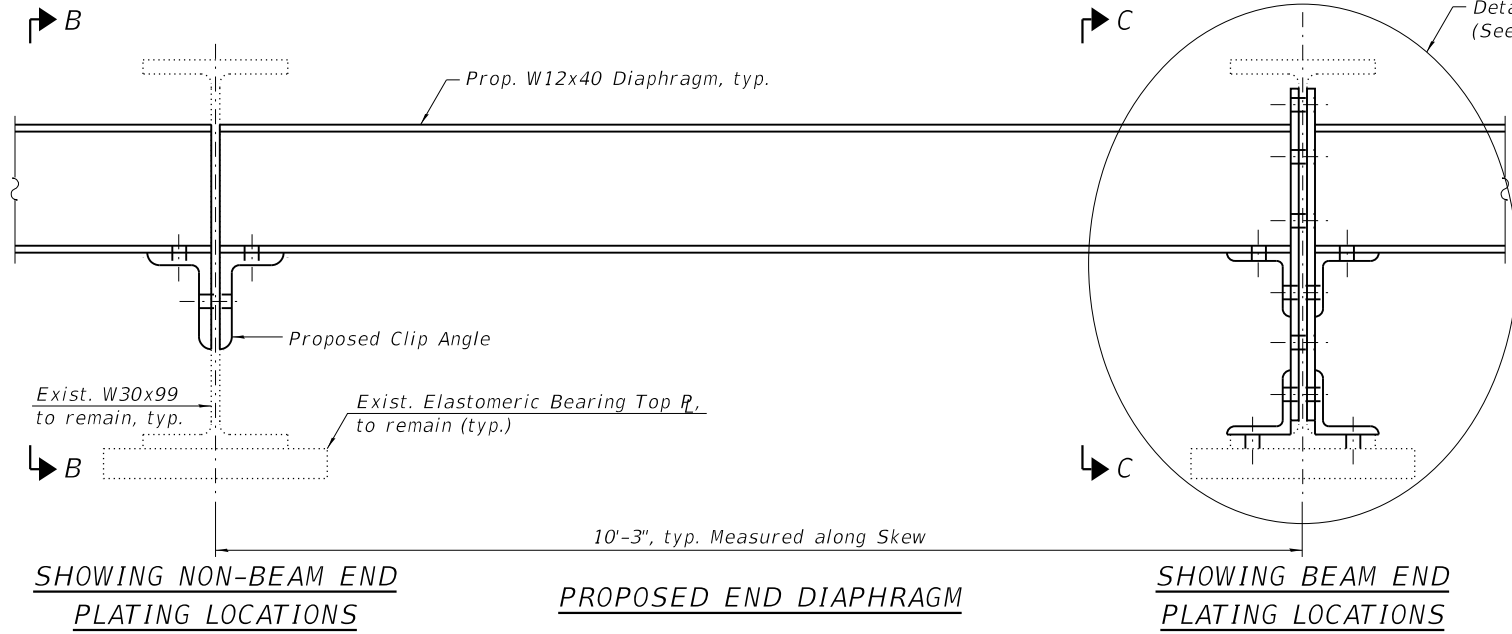
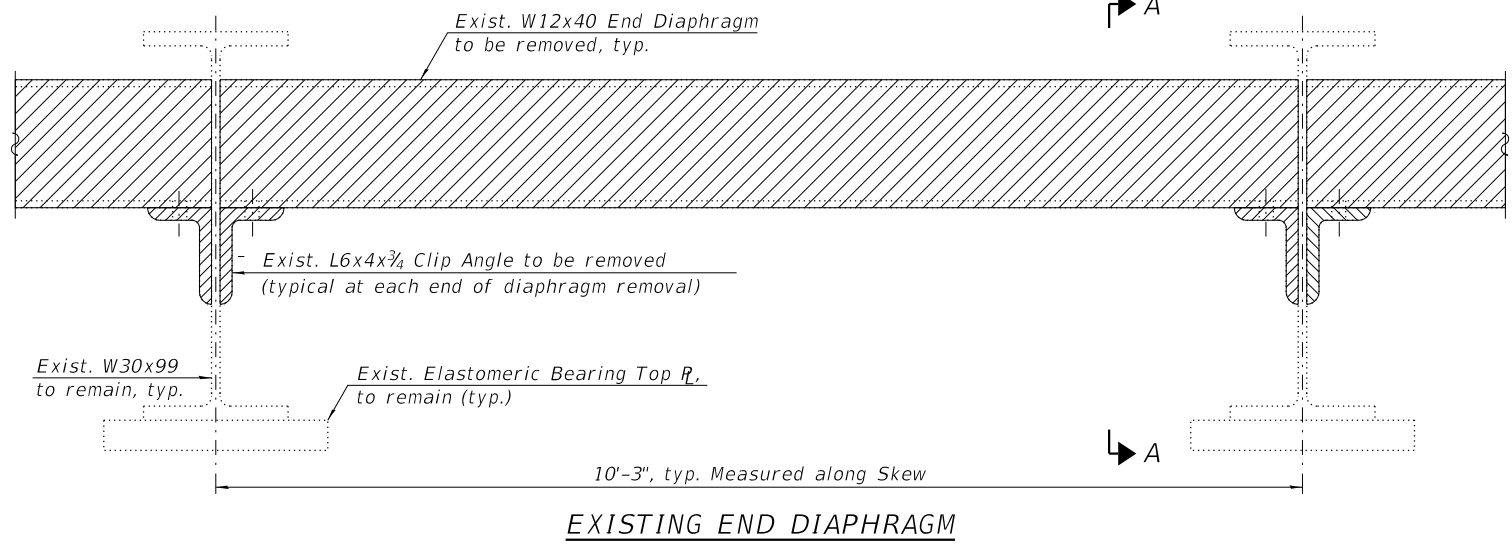
**STATE OF ILLINOIS
DEPARTMENT OF TRANSPORTATION**

**GENERAL DATA
STRUCTURE NO. 016-0868**

SHEET 5-02 OF 5-26 SHEETS

F. A. U. RTE.	SECTION	COUNTY	TOTAL SHEETS	SHEET NO.
1467	2020-161-BR	COOK	58	23
ILLINOIS			CONTRACT NO. 62M49	
FED. AID PROJECT				

REVISD SHEET 12/29/2020



NOTES:

1. For locations of Diaphragm Removal/Replacement and Beam End Repairs, see Sheet S-19.
2. All proposed beam end repair plates and bottom flange repair angles shall conform to the requirements of AASHTO M270 Grade 50. All proposed diaphragms and their connection angles shall conform to the requirements of AASHTO M270 Grade 36.
3. Diaphragm connection holes shall be 1 7/16" O for 3/4" O bolts. Two hardened washers shall be required at all diaphragm connections and all oversized holes.
4. Existing Diaphragm and Clip Angle removal shall be paid for as Structural Steel Removal.
5. All proposed Web Repair Plates, Flange Repair Angles, Fill Plates and associated bolts and fasteners shall be paid for as Structural Steel Repair. All proposed Diaphragms, Clip Angles and associated bolts, washers and fasteners shall be paid for as Furnishing and Erecting Structural Steel.
6. See Sheet S-21 for View C-C.
7. See Sheet S-20A for Plan View.

LEGEND:

Structural Steel Removal

ENTIRE SHEET REVISED 12/29/2020

BILL OF MATERIAL

ITEM	UNIT	QUANTITY
Furnishing and Erecting Structural Steel	Pound	7,770
Structural Steel Removal	Pound	7,290
Structural Steel Repair	Pound	2,300

MODEL: Default
FILE NAME: P:\02_209_004_IDOT_PTB_190_14_Phase II Var-Van\Design\Work Order 12\1\CADD\CADD_Sheets\0162M49-shr-bridge-20diapdet.dgn



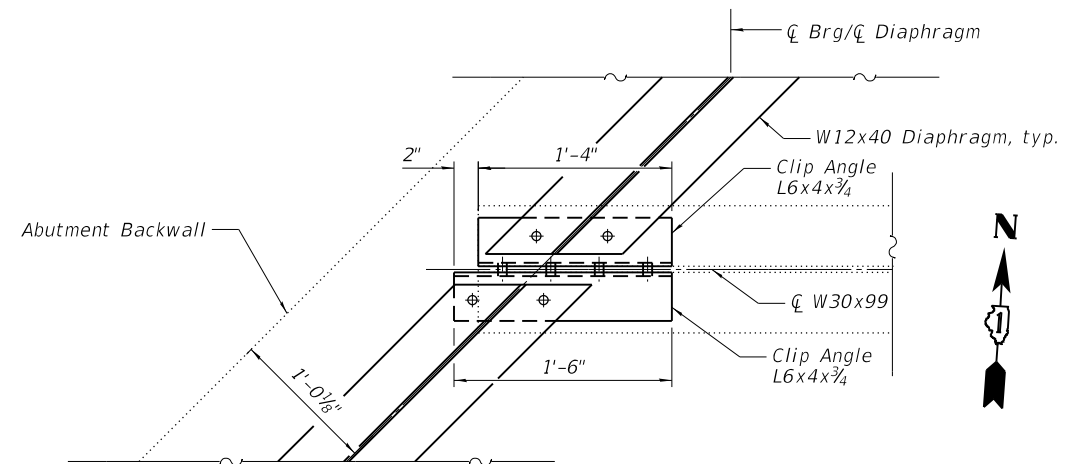
USER NAME = RyanDoerrler	DESIGNED - JES	REVISED -
PLOT SCALE= 0:2.0000 ' : " / in.	CHECKED - RRD	REVISED -
PLOT DATE = 12/22/2020	DRAWN - SVJ	REVISED -
	DATE - 12/02/2020	REVISED -

**STATE OF ILLINOIS
DEPARTMENT OF TRANSPORTATION**

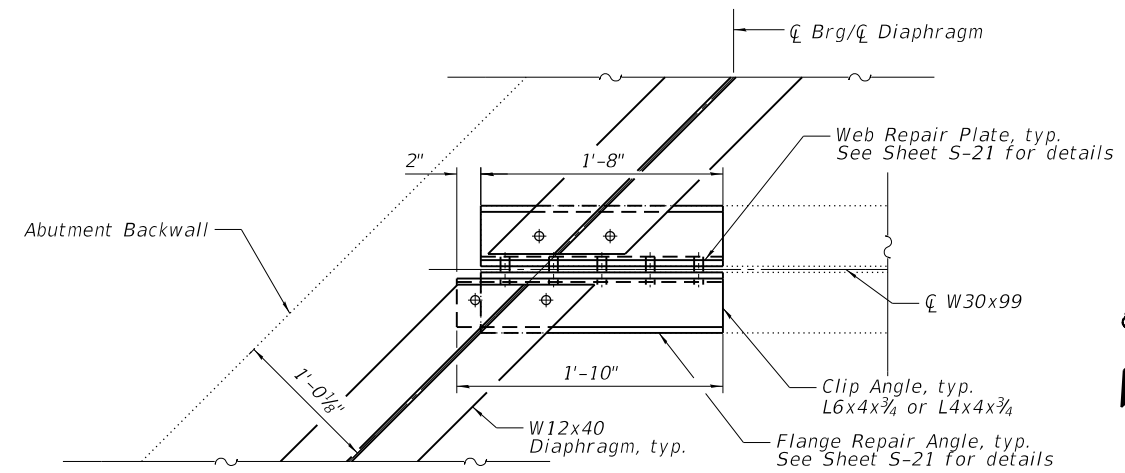
**DIAPHRAGM REPLACEMENT DETAILS
STRUCTURE NO. 016-0868**

SHEET 5-20 OF 5-26 SHEETS

F.A.U. RTE.	SECTION	COUNTY	TOTAL SHEETS	SHEET NO.
1467	2020-161-BR	COOK	58	41
			CONTRACT NO. 62M49	
		ILLINOIS	FED. AID PROJECT	



PLAN VIEW
NON-BEAM END PLATING LOCATIONS
 (West Abutment Shown, East Abutment Similar)



PLAN VIEW
BEAM END PLATING LOCATIONS
 (West Abutment Shown, East Abutment Similar)

MODEL: Default
 FILE NAME: P:\02_209_004_IDOT_PTB_190_14_Phase II Var-Van\Design\Work_Order_12\CADD\CADD_Sheets\0162M49-shr-bridge-20diapdet.dgn



USER NAME = RyanDoerrler	DESIGNED - JES	REVISED -
PLOT SCALE= 0:2.0000 ' : ' / in.	CHECKED - RRD	REVISED -
PLOT DATE = 12/22/2020	DRAWN - SVJ	REVISED -
	DATE - 12/02/2020	REVISED -

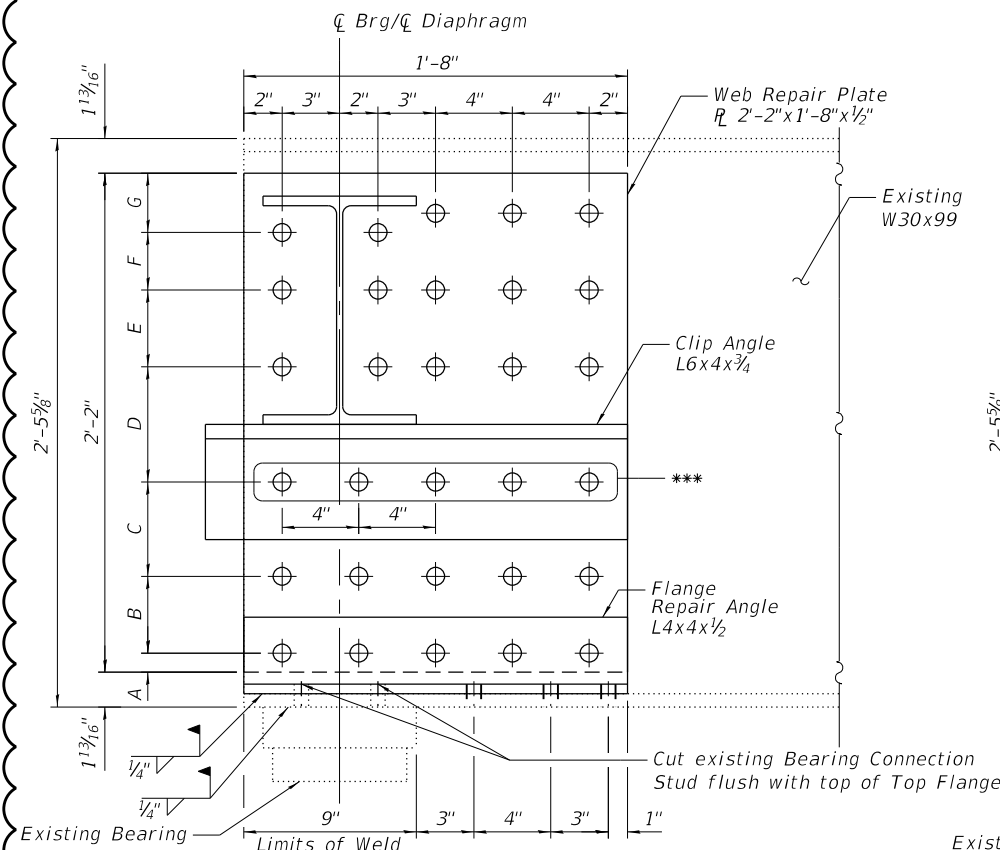
STATE OF ILLINOIS
DEPARTMENT OF TRANSPORTATION

DIAPHRAGM REPLACEMENT DETAILS
STRUCTURE NO. 016-0868

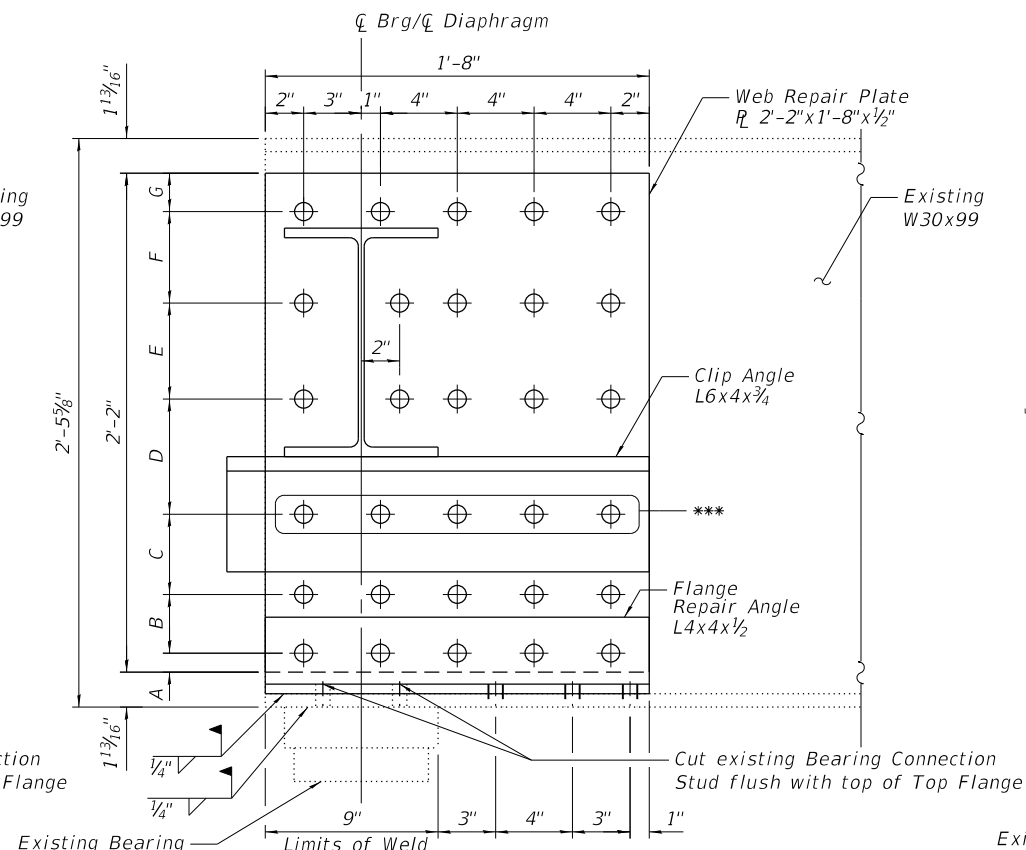
SHEET 5-20A OF 5-26 SHEETS

ENTIRE SHEET REVISED 12/29/2020

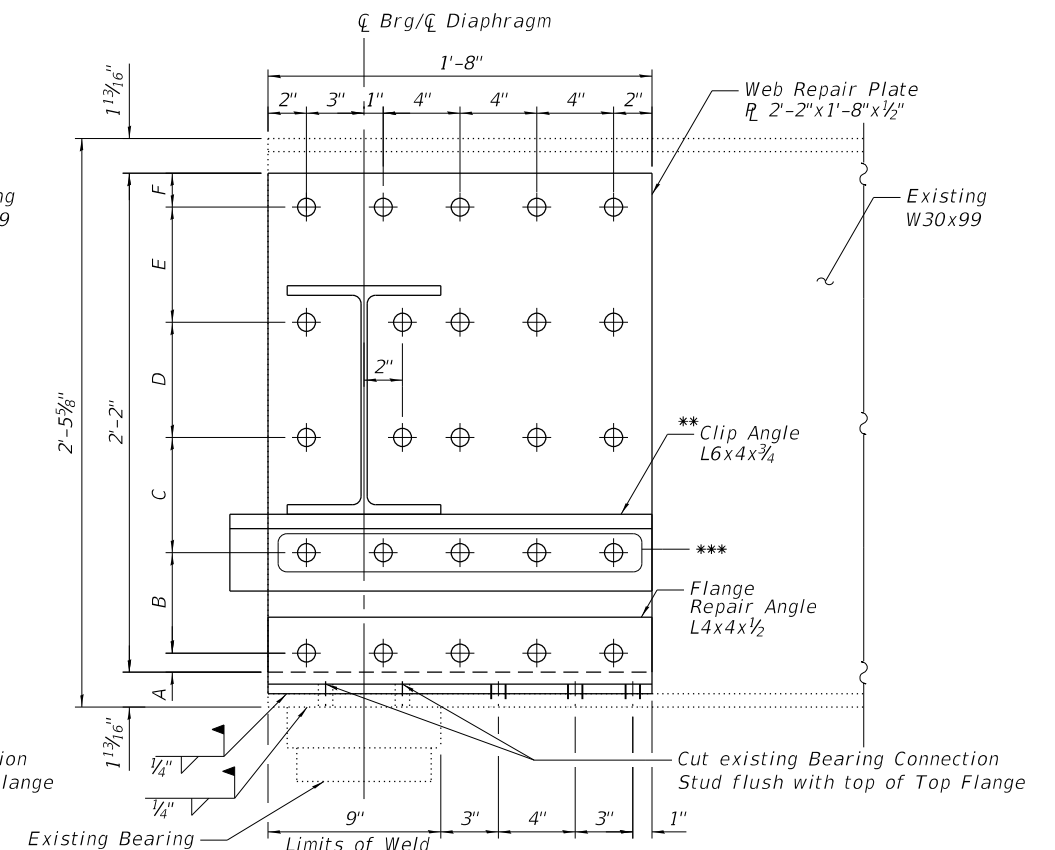
F.A.U. RTE.	SECTION	COUNTY	TOTAL SHEETS	SHEET NO.
1467	2020-161-BR	COOK	57	41A
				CONTRACT NO. 62M49
		ILLINOIS	FED. AID PROJECT	



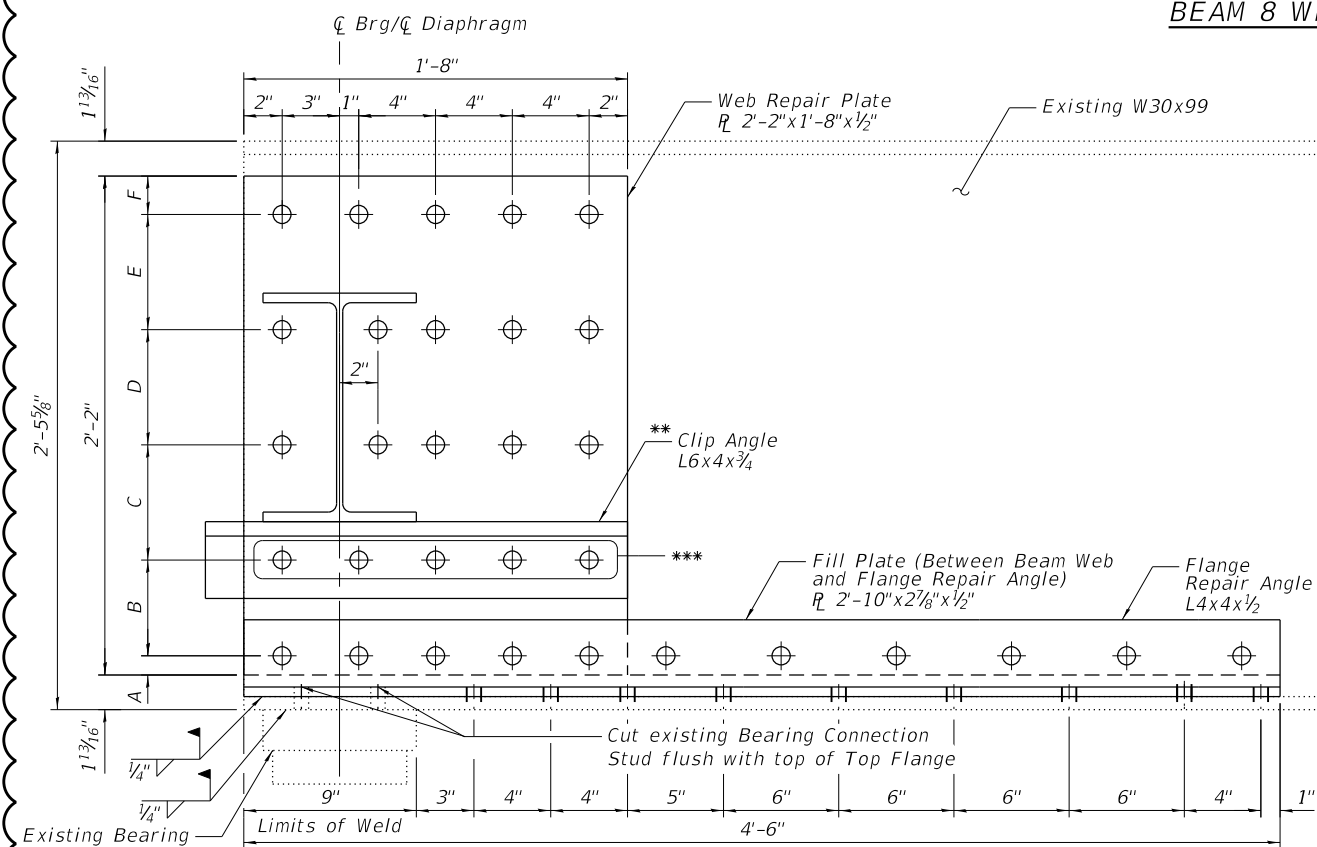
VIEW C-C
BEAM 1 EAST ABUTMENT



VIEW C-C
BEAM 2 EAST ABUTMENT
BEAM 8 WEST ABUTMENT



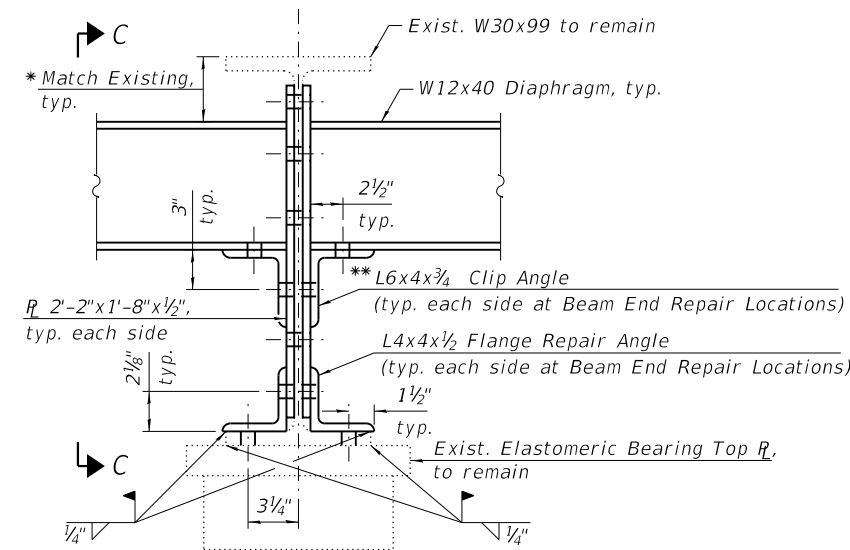
VIEW C-C
BEAM 4 AND 8 EAST ABUTMENT
BEAM 1, 2, 3 AND 7 WEST ABUTMENT



VIEW C-C
BEAM 6 AND 7 EAST ABUTMENT

East Abutment							
Beam	A	B	C	D	E	F	G
1	1"	4"	4 1/16"	6"	4"	4"	2 1/16"
2	1"	3 1/8"	4 1/8"	6"	5"	4 3/4"	2"
4	1"	5 1/4"	6"	6"	6"	1 3/4"	-
6	1"	5"	6"	6"	6"	2"	-
7	1"	5 3/16"	6"	6"	6"	1 3/16"	-
8	1"	5 1/16"	6"	6"	6"	1 1/16"	-

West Abutment							
Beam	A	B	C	D	E	F	G
1	1"	6 3/8"	6"	6"	4 3/8"	2"	-
2	1"	5 7/16"	6"	6"	6"	1 1/16"	-
3	1"	5 3/8"	6"	6"	6"	1 5/8"	-
7	1"	6 1/16"	6"	6"	6"	1 5/16"	-
8	1"	3 1/4"	4 3/8"	6"	5"	5"	1 3/8"



DETAIL 1

- * Distance from Top of Main Girder to Top of Proposed Diaphragm to be Field Verified prior to Ordering Material.
- ** L4x4x3/4 Proposed Clip Angle For Beams 4 and 6 East Abutment, Beam 3 West Abutment.
- *** Contractor to field verify diaphragm location and bolt hole locations before ordering material.

NOTES:

1. For Notes and Bill of Material see Sheet S-20.
2. For Locations of Diaphragm Removal/Replacement and Beam End Repairs, see Sheet S-19.
3. See Sheet S-20A for Clip Angle lengths.
4. No welds are to be installed on the back/end of the beam. All welds are included in the cost of Structural Steel Repairs.
5. Contractor to field verify hole locations before ordering material. Contractor can elect to field drill holes in repair plates.
6. Cost of cutting existing Bearing Connection Stud included in the cost of Structural Steel Repair.
7. Existing Side Retainers can be removed and reinstalled as approved by the Engineer in the field. Removal and reinstallation is included in the cost of Structural Steel Repairs.

ENTIRE SHEET REVISED 12/29/2020



USER NAME = jstapleton	DESIGNED - JES	REVISED -
CHECKED - RRD	REVISIONS -	
PLOT SCALE = 0.2,0000 " / 1"	DRAWN - SVJ	REVISED -
PLOT DATE = 12/22/2020	DATE - 12/02/2020	REVISED -

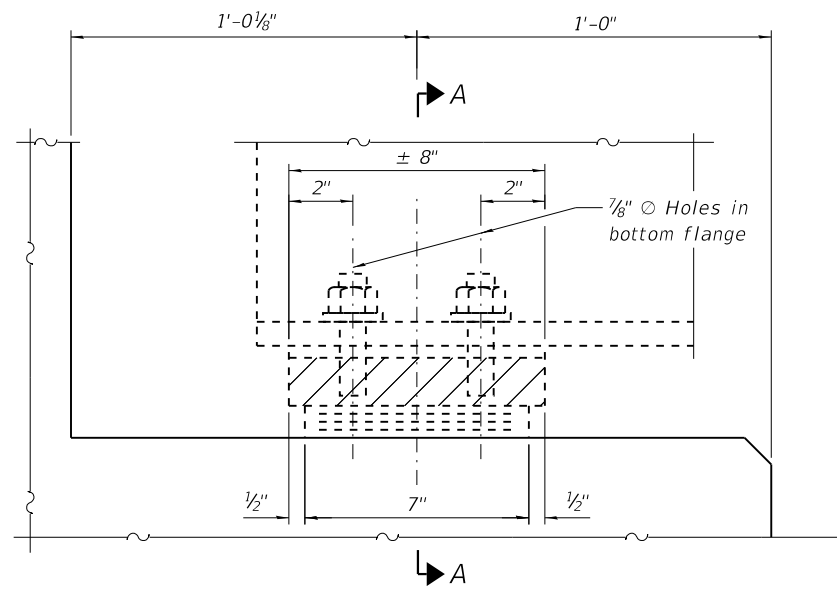
STATE OF ILLINOIS
DEPARTMENT OF TRANSPORTATION

BEAM REPAIR DETAILS
STRUCTURE NO. 016-0868

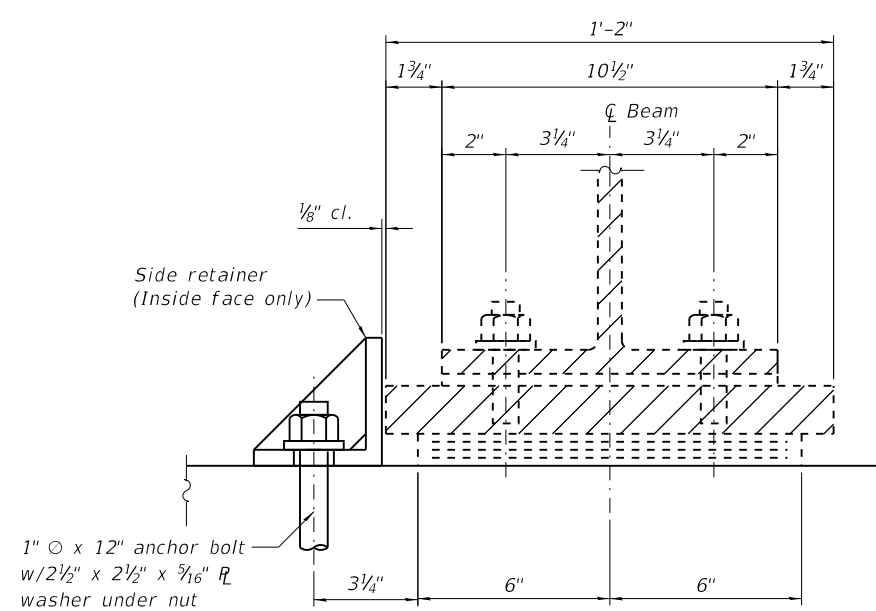
SHEET 5-21 OF 5-26 SHEETS

F.A.U. RTE.	SECTION	COUNTY	TOTAL SHEETS	SHEET NO.
1467	2020-161-BR	COOK	58	42
CONTRACT NO. 62M49				
ILLINOIS		FED. AID PROJECT		

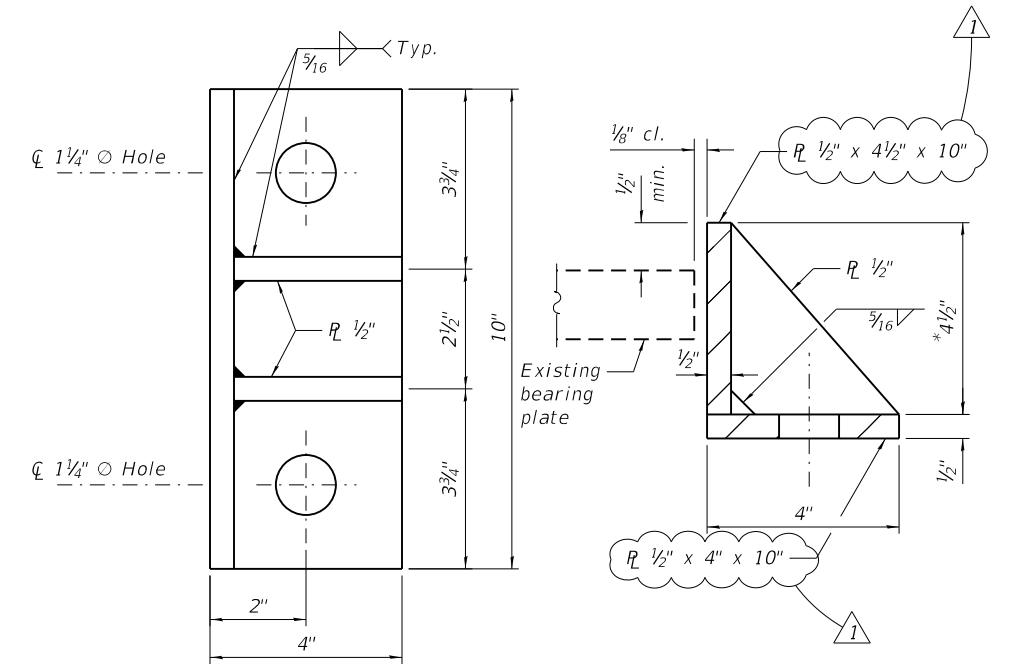
MODEL: Default
FILE NAME: P:\02_209_004_IDOT_PTB_190_14_Phase II Var-VanDesign\Work Order 121\CADD\CADD_Sheets\0162M49-shr-bridge-2\beamrepair.dgn
12/22/2020 12:27:11 PM



**EXISTING EXPANSION BEARING
AT WEST ABUTMENT BEAM 9**



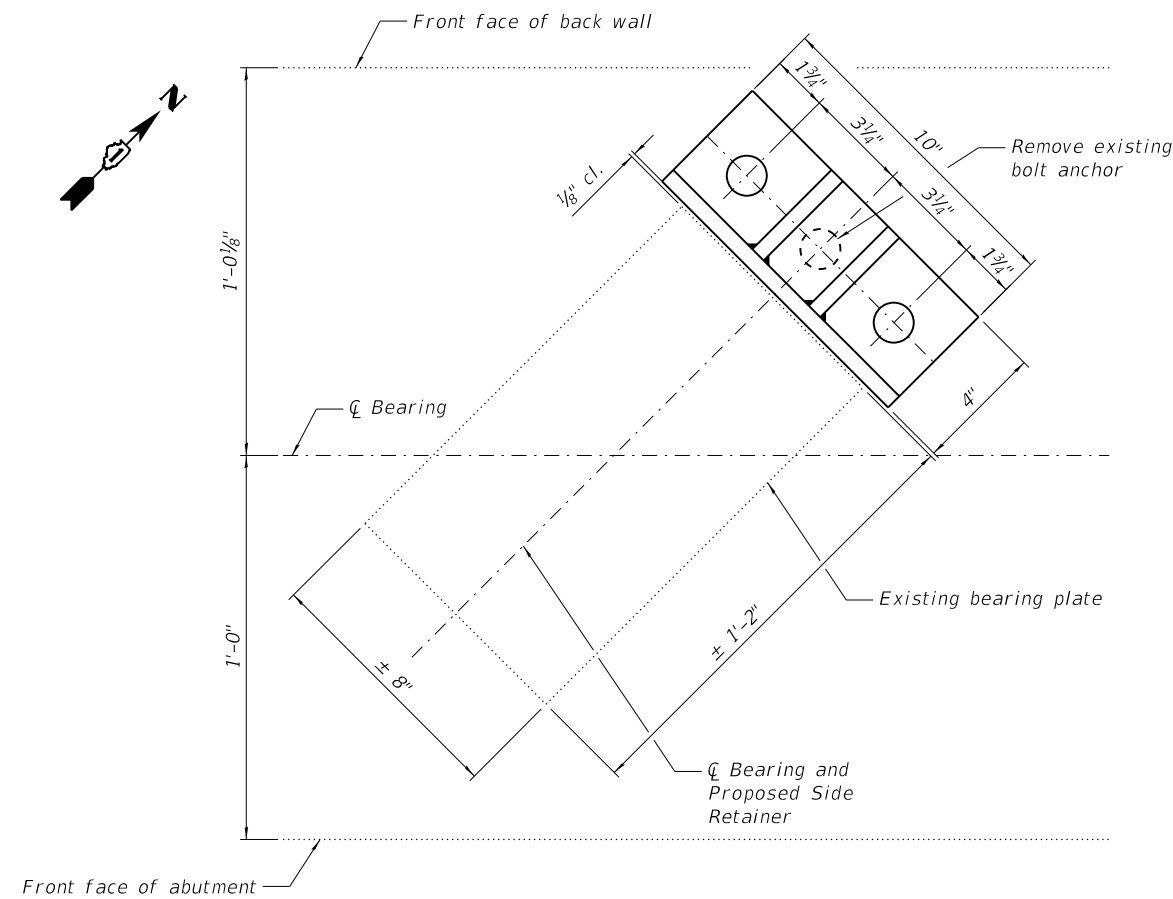
SECTION A-A



**PROPOSED SIDE RETAINER
AT BEAM 9 (WEST ABUTMENT)**

Equivalent rolled angle with stiffeners will be allowed in lieu of welded plates.

* Contractor to field verify before ordering material.



PLAN WEST ABUTMENT BEAM 9
(Beam not shown for clarity)

NOTE:

The existing anchor bolt shall be removed 1\"/>

BILL OF MATERIAL

ITEM	UNIT	QUANTITY
Furnishing and Erecting Structural Steel	Pound	20
Anchor Bolts, 1"	Each	2

MODEL: Default
FILE NAME: P:\02_209_004_IDOT_PTB_190_14_Phase II Var-Van\Design\Work_Order_12\CADD\CADD_Sheets\0162M49-shr-bridge-22bearingdet.dgn



USER NAME = jstapleton	DESIGNED - JES	REVISED -
PLOT SCALE = 0:2,0000 = 1/4"	CHECKED - RRD	REVISED -
PLOT DATE = 12/22/2020	DRAWN - SVJ	REVISED -
	DATE - 12/02/2020	REVISED -

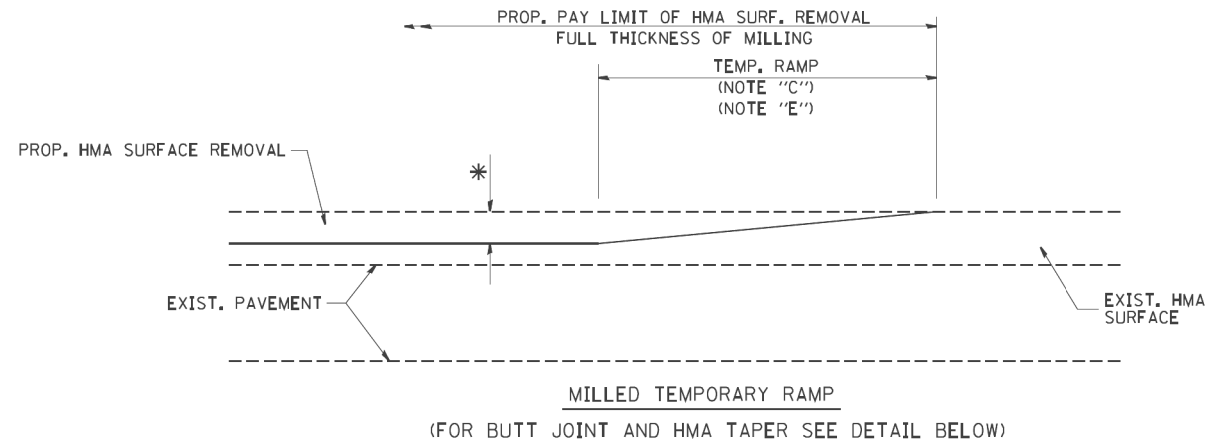
**STATE OF ILLINOIS
DEPARTMENT OF TRANSPORTATION**

**BEARING REPAIR DETAILS
STRUCTURE NO. 016-0868**

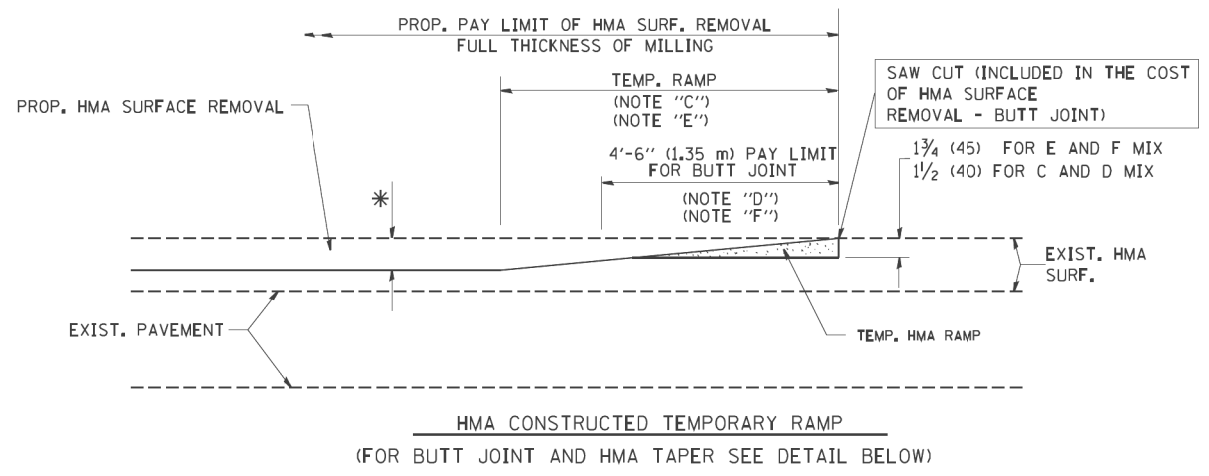
SHEET 5-22 OF 5-26 SHEETS

F.A.U. RTE.	SECTION	COUNTY	TOTAL SHEETS	SHEET NO.
1467	2020-161-BR	COOK	58	43
CONTRACT NO. 62M49				
ILLINOIS		FED. AID PROJECT		

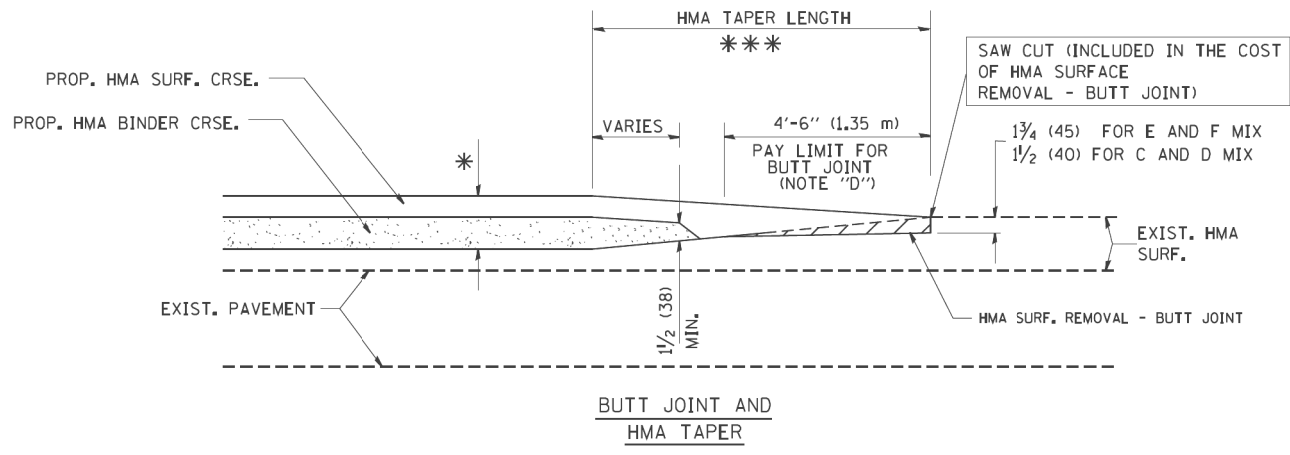
REVIS 12/29/2020



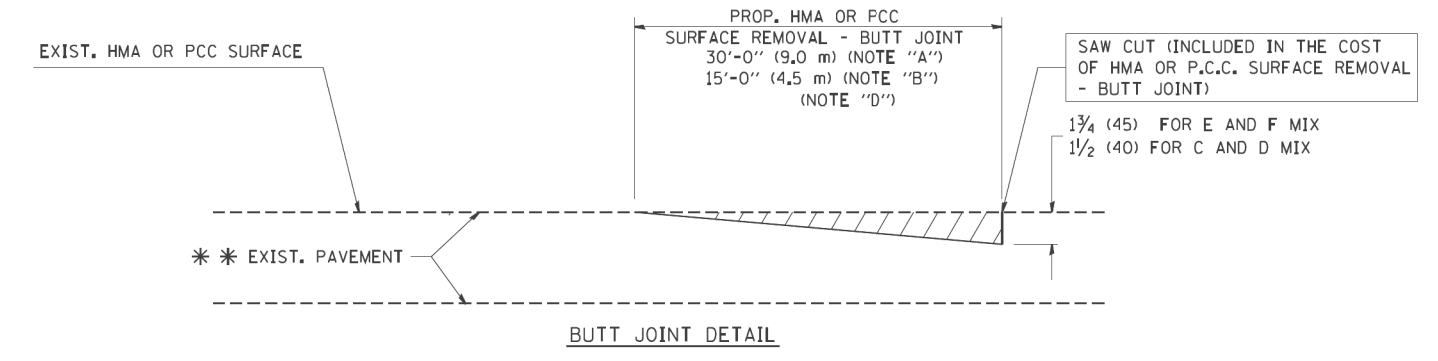
OPTION 1



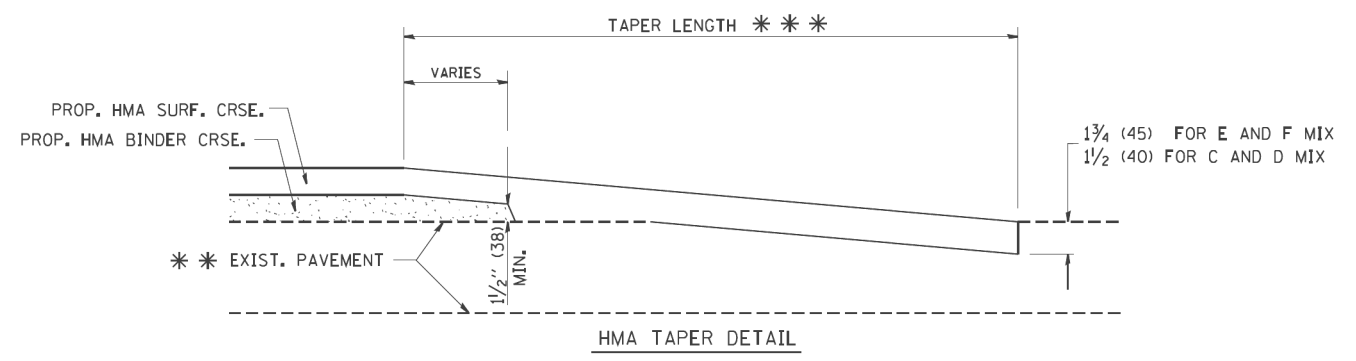
OPTION 2
TYPICAL TEMPORARY RAMP



TYPICAL BUTT JOINT AND HMA TAPER FOR MILLING AND RESURFACING



BUTT JOINT DETAIL



HMA TAPER DETAIL

TYPICAL BUTT JOINT AND HMA TAPER FOR RESURFACING ONLY

*** PC CONCRETE, HMA OR HMA RESURFACED PAVEMENT.

NOTES

- A: MAINLINE ROADWAYS AND MAJOR SIDE ROADS.
 - B: MINOR SIDE ROADS.
 - C: THE TEMP. RAMP SHALL BE CONSTRUCTED IMMEDIATELY UPON REMOVAL OF THE EXISTING HMA SURFACE.
 - D: THE BUTT JOINT SHALL BE CONSTRUCTED IMMEDIATELY PRIOR TO PLACING THE PROPOSED HMA COURSES.
 - E: TAPER THE TEMP. RAMP AT A RATE OF 3'-0" (900 mm) PER 1 INCH (25 mm) OF MILLING THICKNESS.
 - F: INSTALLATION AND REMOVAL OF THE 4'-6" (1.35 m) TEMP. RAMP IS INCLUDED IN COST OF HMA SURFACE REMOVAL - BUTT JOINT
 - G: SEE ARTICLE 406.08 AND 406.14 OF THE STANDARD SPECIFICATIONS FOR "HMA AND/OR PCC SURFACE REMOVAL, BUTT JOINT".
- * SEE TYPICAL SECTIONS FOR MILLING THICKNESS.
- *** 20'-0" (6.1 m) PER 1 (25) RESURFACING (NOTE "A")
10'-0" (3.0 m) PER 1 (25) RESURFACING (NOTE "B")

BASIS OF PAYMENT:

THE BUTT JOINT WILL BE PAID FOR AT THE CONTRACT UNIT PRICE PER SQUARE YARD (SQUARE METER) FOR "HOT-MIX ASPHALT SURFACE REMOVAL - BUTT JOINT" OR FOR "PORTLAND CEMENT CONCRETE SURFACE REMOVAL - BUTT JOINT".

ENTIRE SHEET ADDED 12/29/2020

ALL DIMENSIONS ARE IN INCHES (MILLIMETERS) UNLESS OTHERWISE SHOWN.

USER: dave

FILE NAME = W:\diststd\22x34\bd32.dgn	PLOT DRIVER = pdfNOLAYERSbw.pltcf	DESIGNED - M. DE YONG	REVISED
	PEN TABLE = D162M49-Addendum.tbl	DRAWN -	REVISED - A. ABBAS 03-21-97
	PLOT SCALE = 50.0000' / IN.	CHECKED -	REVISED - M. GOMEZ 04-06-01
	PLOT DATE = 1/4/2008 5:48:16 PM	DATE - 06-13-90	REVISED - R. BORO 01-01-07

STATE OF ILLINOIS
DEPARTMENT OF TRANSPORTATION

BUTT JOINT AND HMA TAPER DETAILS

SCALE: NONE SHEET NO. 1 OF 1 SHEETS STA. TO STA.

F.A.P. RTE.	SECTION	COUNTY	TOTAL SHEETS	SHEET NO.
1467	2020-161-BR	COOK	57	48A
CONTRACT NO. 62M49				
ILLINOIS FED. AID PROJECT				