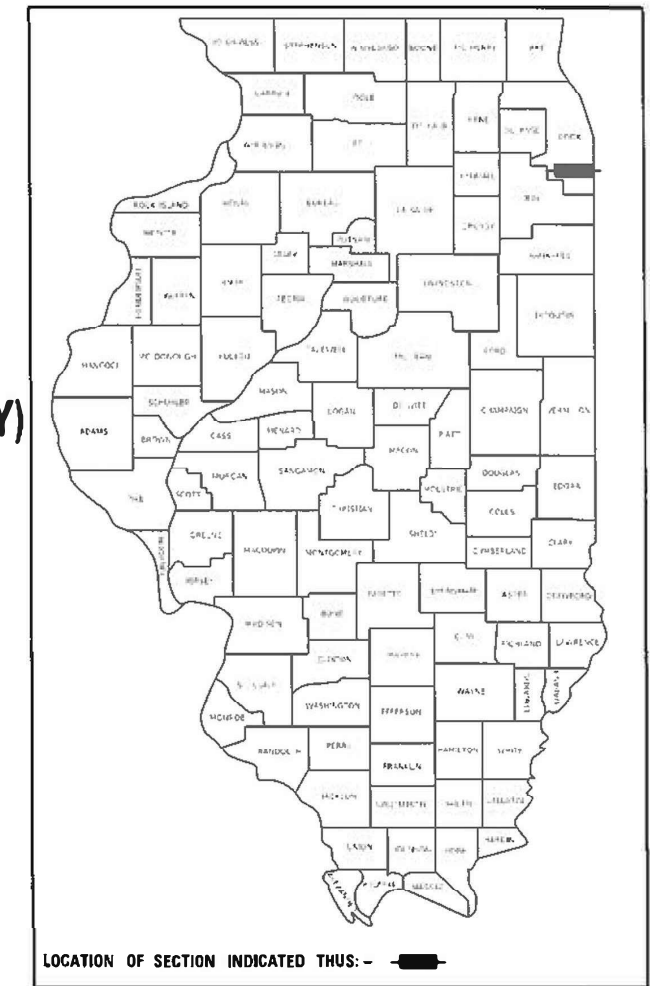


STATE OF ILLINOIS
DEPARTMENT OF TRANSPORTATION

F.A.P. RTE.	SECTION	COUNTY	TOTAL SHEETS	SHEET NO.
344A	2020-072-PP&SW	COOK	18	1
		ILLINOIS	CONTRACT NO. 62L50	

D-91-471-20



PROPOSED HIGHWAY PLANS

F.A.P. ROUTE 344A - 130TH ST
INDIANA AVE TO EAST OF I-94 (BISHOP FORD EXPWY)
SECTION 2020-072-PP&SW
PAVEMENT PATCHING / CRACK & JOINT SEALING
COOK COUNTY

C-91-269-20

FOR INDEX OF SHEETS, SEE SHEET NO. 2

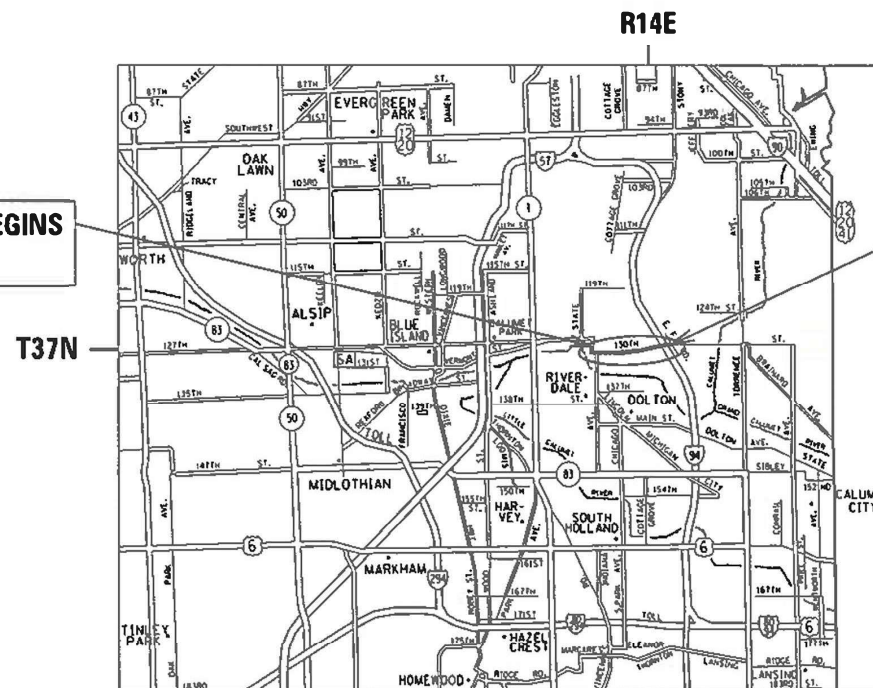
THIS IMPROVEMENT IS LOCATED
IN THE CITY OF CHICAGO

TRAFFIC DATA

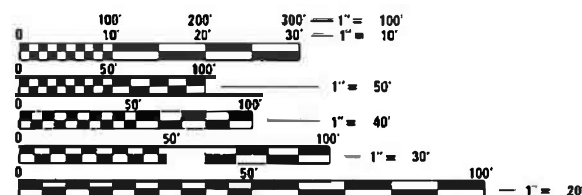
EXISTING ADT = 18200 (2018)
POSTED SPEED LIMIT = 30 & 35 MPH

IMPROVEMENT BEGINS
STA 8 + 95

IMPROVEMENT ENDS
STA 111 + 66



HYDE PARK TOWNSHIP



FULL SIZE PLANS HAVE BEEN PREPARED USING STANDARD ENGINEERING SCALES. REDUCED SIZED PLANS WILL NOT CONFORM TO STANDARD SCALES. IN MAKING MEASUREMENTS ON REDUCED PLANS, THE ABOVE SCALES MAY BE USED.

C.U.A.N.
CHICAGO UTILITY ALERT NETWORK
(312) 744-7000

PROJECT MANAGER: J. ALAIN MIDY (847) 221-3056

CONTRACT NO. 62L50

GROSS LENGTH = 10,271 FT. = 1.945 MILE
NET LENGTH = 10,271 FT. = 1.945 MILE

STATE OF ILLINOIS
DEPARTMENT OF TRANSPORTATION

SUBMITTED *December 6, 2020*
Anthony J. Dwyer REGIONAL ENGINEER
December 4, 2020
Scott A. Elk
ENGINEER OF DESIGN AND ENVIRONMENT
December 4, 2020
James J. [Signature]
DIRECTOR OF HIGHWAYS PROJECT IMPLEMENTATION

PRINTED BY THE AUTHORITY
OF THE STATE OF ILLINOIS

INDEX OF SHEETS

STATE STANDARDS

GENERAL NOTES

SHEET NO.	DESCRIPTION	STANDARD NO.	DESCRIPTION
1	COVER SHEET	000001-08	STANDARD SYMBOLS, ABBREVIATIONS AND PATTERNS
2	INDEX OF SHEETS, STATE STANDARDS & GENERAL NOTES	701006-05	OFF-RD OPERATIONS, 2L, 2W, 15' (4.5m) TO 24" (600mm) FROM PAVEMENT EDGE
3-4	SUMMARY OF QUANTITIES	701011-04	OFF-RD MOVING OPERATIONS, 2L, 2W, DAY ONLY
5	TYPICAL SECTIONS	701106-02	OFF-RD OPERATIONS, MULTILANE, MORE THAN 15' (4.5m) AWAY
6-9	ROADWAY AND PAVEMENT MARKING PLANS	701301-04	LANE CLOSURE, 2L, 2W, SHORT TIME OPERATIONS
10	ENTRANCE AND EXIT RAMP CLOSURE DETAILS (TC-08)	701311-03	LANE CLOSURE, 2L, 2W, MOVING OPERATIONS, DAY ONLY
11	TRAFFIC CONTROL AND PROTECTION FOR SIDE ROADS, INTERSECTIONS AND DRIVEWAYS (TC-10)	701400-10	APPROACH TO LANE CLOSURE, FREEWAY/EXPRESSWAY
12-13	MULTI-LANE FREEWAY PAVEMENT MARKING DETAILS (TC-12)	701401-12	LANE CLOSURE, FREEWAY/EXPRESSWAY
14	TRAFFIC CONTROL AND PROTECTION AT TURN BAYS (TO REMAIN OPEN TO TRAFFIC) (TC-14)	701411-09	LANE CLOSURE, MULTILANE, AT ENTRANCE OR EXIT RAMP, FOR SPEEDS ≥ 45 MPH
15	PAVEMENT MARKING LETTERS AND SYMBOLS FOR TRAFFIC STAGING (TC-16)	701427-05	LANE CLOSURE, MULTILANE, INTERMITTENT OR MOVING OPER., FOR SPEEDS ≤ 40 MPH
16	TRAFFIC CONTROL DETAILS FOR FREEWAY SHOULDER CLOSURES AND PARTIAL RAMP CLOSURES (TC-17)	701428-01	TRAFFIC CONTROL SETUP AND REMOVAL FREEWAY/EXPRESSWAY
17	ARTERIAL ROAD INFORMATION SIGN (TC-22)	701501-06	URBAN LANE CLOSURE, 2L, 2W, UNDIVIDED
18	CITY OF CHICAGO TYPICAL PAVEMENT MARKINGS (TC-24)	701601-09	URBAN LANE CLOSURE, MULTILANE, 1W OR 2W WITH NON-TRAVERSABLE MEDIAN
		701606-10	URBAN SINGLE LANE CLOSURE, MULTILANE, 2W WITH MOUNTABLE MEDIAN
		701701-10	URBAN LANE CLOSURE, MULTILANE INTERSECTION
		701801-06	SIDEWALK, CORNER OR CROSSWALK CLOSURE
		701901-08	TRAFFIC CONTROL DEVICES

- BEFORE STARTING ANY EXCAVATION, THE CONTRACTOR SHALL CALL "C.U.A.N." (CHICAGO UTILITY ALERT NETWORK) AT (312) 744-7000 FOR FIELD LOCATIONS OF BURIED ELECTRIC, TELEPHONE, AND GAS FACILITIES. (48 HOUR NOTIFICATION REQUIRED).
- THE CONTRACTOR SHALL COORDINATE CONSTRUCTION ACTIVITIES WITH UTILITY COMPANIES.
- THE CONTRACTOR WILL NOT BE ALLOWED TO SET UP A YARD OR FIELD OFFICE ON STATE PROPERTY WITHOUT THE WRITTEN PERMISSION OF THE DEPARTMENT.
- BEFORE BEGINNING ANY WORK, THE CONTRACTOR SHALL RETAIN AND RECORD FOR FUTURE REFERENCE, ALL EXISTING PAVEMENT MARKING LINES (AND RAISED REFLECTIVE PAVEMENT MARKERS) IN ORDER THAT THESE LOCATIONS CAN BE RE-ESTABLISHED FOR STRIPING. EXACT LOCATIONS OF ALL PAVEMENT MARKINGS SHALL BE AS DIRECTED BY THE ENGINEER.
- IT SHALL BE THE CONTRACTOR'S RESPONSIBILITY TO VERIFY ALL DIMENSIONS AND CONDITIONS EXISTING IN THE FIELD PRIOR TO CONSTRUCTION AND ORDERING OF MATERIALS.
- THE CONTRACTOR SHALL CONTACT DISTRICT ONE ARTERIAL TRAFFIC CONTROL SUPERVISOR AT KALPANA.KANNANHOSADURGA@ILLINOIS.GOV A MINIMUM OF 72 HOURS IN ADVANCE OF BEGINNING WORK.
- THE CONTRACTOR SHALL BE REQUIRED TO PROVIDE ACCESS TO ABUTTING PROPERTY AT ALL TIMES DURING THE CONSTRUCTION OF THIS PROJECT.
- DO NOT SCALE PLANS FOR CONSTRUCTION DIMENSIONS.
- ALL DAMAGE TO EXISTING PAVEMENT MARKINGS OR RAISED REFLECTIVE PAVEMENT MARKERS OUTSIDE THE REMOVAL LINE SHOWN ON THE PLANS SHALL BE REPLACED AT NO ADDITIONAL COST TO THE DEPARTMENT.
- THESE PLANS HAVE BEEN PREPARED FROM NOTES RECEIVED FROM THE BUREAU OF CONSTRUCTION.
- LOCATION OF COMBINATION CONCRETE CURB AND GUTTER REMOVAL AND REPLACEMENT (OR COMBINATION CURB AND GUTTER (THE TYPE SPECIFIED ON THE PLANS)), WILL BE DETERMINED IN THE FIELD BY THE ENGINEER.
- DRAINAGE ADJUSTMENT OR RECONSTRUCTION LOCATIONS WILL BE DETERMINED IN THE FIELD BY THE ENGINEER.
- IT SHALL BE THE CONTRACTOR'S RESPONSIBILITY TO VERIFY ALL DIMENSIONS AND CONDITIONS EXISTING IN THE FIELD PRIOR TO CONSTRUCTION AND ORDERING OF MATERIALS.
- FRAMES AND GRATES ADJUSTMENT OF PRIVATE UTILITIES WITHIN THE LIMITS OF THE IMPROVEMENTS SHALL BE DONE BY THEIR RESPECTIVE OWNERS AND ARE NOT PART OF THIS CONTRACT.
- OPEN LID DRAINAGE STRUCTURES SHALL NOT BE CLOSED, COVERED OR OTHERWISE OBSTRUCTED DURING CONSTRUCTION OF THIS ROADWAY WITHOUT THE WRITTEN PERMISSION FROM THE CITY OF CHICAGO.
- OVERNIGHT LANE CLOSURES SHALL NOT BE ALLOWED FOR REHABILITATION PROJECTS INVOLVING DAYTIME MILLING AND RESURFACING OPERATIONS AND CLASS D PATCHING UNLESS OTHER CONDITIONS WARRANT EXTENDED LANE CLOSURES AS DETERMINED AND APPROVED IN WRITING BY THE ENGINEER OR AS PROVIDED FOR IN THE CONTRACT SPECIFICATIONS.
- ALL BROKEN, CRACKED, WORN OR OTHERWISE DAMAGED OR BICYCLE UNSAFE FRAMES AND LIDS ON SEWER STRUCTURES, SHALL BE REPLACED WITH NEW DEPARTMENT OF SEWERS' STANDARD FRAMES AND LIDS.
- CITY OF CHICAGO CASTINGS ARE THE PROPERTY OF THE CITY OF CHICAGO AND THE CONTRACTOR SHALL NOTIFY THE CITY FOR REMOVAL AND DISPOSITION OF THE CASTINGS.
- CRACK SEALING LOCATIONS WILL BE DETERMINED IN THE FIELD BY THE ENGINEER.
- PATCHING LOCATIONS WILL BE DETERMINED IN THE FIELD BY THE ENGINEER.
- THE CONTRACTOR SHALL REQUEST AND GAIN APPROVAL FROM THE ILLINOIS DEPARTMENT OF TRANSPORTATION'S EXPRESSWAY TRAFFIC OPERATIONS ENGINEER AT www.idotlcs.com TWENTY-FOUR (24) HOURS IN ADVANCE OF ALL DAILY LANE, RAMP AND SHOULDER CLOSURES AND 7 DAYS IN ADVANCE OF ALL PERMANENT AND WEEKEND CLOSURES.

MODEL: Default
 FILE NAME: P:\p\planroom.dat
 ILLINOIS.GOV\PWIDOT\Documents\DOT_Offices\District_1\Projects\ID147120\CADDData\Design\ID147120-sht-general.dgn

REV-SEP

USER NAME = dumachia	DESIGNED -	REVISED -	STATE OF ILLINOIS DEPARTMENT OF TRANSPORTATION	INDEX OF SHEETS, STATE STANDARDS, AND GENERAL NOTES				F.A.P. RTE.	SECTION	COUNTY	TOTAL SHEETS	SHEET NO.
DRAWN -	REVISED -	344						2020-072-PP&SW	COOK	18	2	
PLOT SCALE = 100.0000' / in.	CHECKED -	REVISED -		CONTRACT NO. 62L50								
PLOT DATE = 10/20/2020	DATE -	REVISED -		SCALE:	SHEET 1	OF 1	SHEETS	STA.	TO STA.	ILLINOIS FED. AID PROJECT		

SUMMARY OF QUANTITIES			URBAN TOTAL QUANTITIES	CONSTRUCTION TYPE CODE				
CODE NO	ITEM	UNIT		0006 100% STATE	0005 100% STATE			
21101615	TOPSOIL FURNISH AND PLACE, 4"	SO YD	45	45				
25200110	SODDING, SALT TOLERANT	SO YD	45	45				
25200200	SUPPLEMENTAL WATERING	UNIT	3	3				
44200050	WELDED WIRE REINFORCEMENT	SO YD	2220	2220				
44200970	CLASS B PATCHES, TYPE II, 10 INCH	SO YD	2625	2625				
44200974	CLASS B PATCHES, TYPE III, 10 INCH	SO YD	513	513				
44200976	CLASS B PATCHES, TYPE IV, 10 INCH	SO YD	1929	1929				
44201299	DOWEL BARS 1 1/2"	EACH	6668	6668				
44213200	SAW CUTS	FOOT	23931	23931				
44213202	TIE BARS 1"	EACH	1410	1410				
45200100	JOINT OR CRACK ROUTING (PC CONCRETE PAVEMENT AND SHOULDER)	FOOT	4661	4661				
45200300	JOINT OR CRACK FILLING	POUND	1332	1332				
60300305	FRAMES AND LIDS TO BE ADJUSTED	EACH	54	54				
67000400	ENGINEER'S FIELD OFFICE, TYPE A	CAL MO	6	6				
67100100	MOBILIZATION	L SUM	1	1				

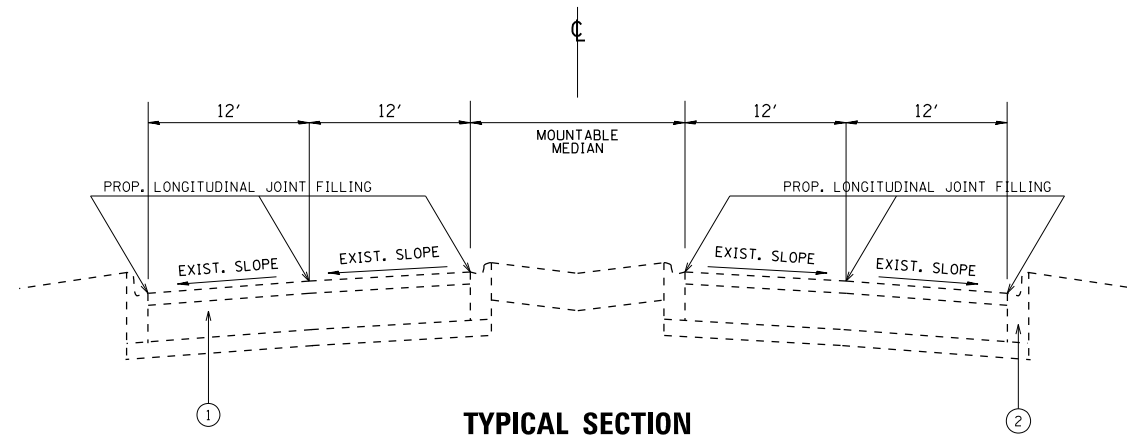
SUMMARY OF QUANTITIES			URBAN TOTAL QUANTITIES	CONSTRUCTION TYPE CODE				
CODE NO	ITEM	UNIT		0006 100% STATE	0005 100% STATE			
70102620	TRAFFIC CONTROL AND PROTECTION, STANDARD 701501	L SUM	1	1				
70102625	TRAFFIC CONTROL AND PROTECTION, STANDARD 701606	L SUM	1	1				
70102630	TRAFFIC CONTROL AND PROTECTION, STANDARD 701601	L SUM	1	1				
70102632	TRAFFIC CONTROL AND PROTECTION, STANDARD 701602	L SUM	1	1				
70102634	TRAFFIC CONTROL AND PROTECTION, STANDARD 701611	L SUM	1	1				
70102635	TRAFFIC CONTROL AND PROTECTION, STANDARD 701701	L SUM	1	1				
70102640	TRAFFIC CONTROL AND PROTECTION, STANDARD 701801	L SUM	1	1				
70103815	TRAFFIC CONTROL SURVEILLANCE	CAL DA	60	60				
78009000	MODIFIED URETHANE PAVEMENT MARKING - LETTERS AND SYMBOLS	SO FT	310	310				
78009004	MODIFIED URETHANE PAVEMENT MARKING - LINE 4"	FOOT	1669	1669				
78009006	MODIFIED URETHANE PAVEMENT MARKING - LINE 6"	FOOT	4427	4427				

FILE NAME =	USER NAME = dumachis	DESIGNED -	REVISED -	STATE OF ILLINOIS DEPARTMENT OF TRANSPORTATION	SUMMARY OF QUANTITIES 130TH ST - INDIANA AVE TO EAST OF I-94 (BISHOP FORD EXPY)			F.A.P. RTE.	SECTION	COUNTY	TOTAL SHEETS	SHEET NO.			
p:\planroom\dtd\illinois\gov\PI\DOT\Documents\DOT	Offices\District	DRAWN -	REVISED -					344	2020-072-PP&SW	COOK	18	3			
		CHECKED -	REVISED -					CONTRACT NO. 62L50							
		DATE -	REVISED -					FED. ROAD DIST. NO. 1 ILLINOIS FED. AID PROJECT							

* - SPECIALTY ITEM

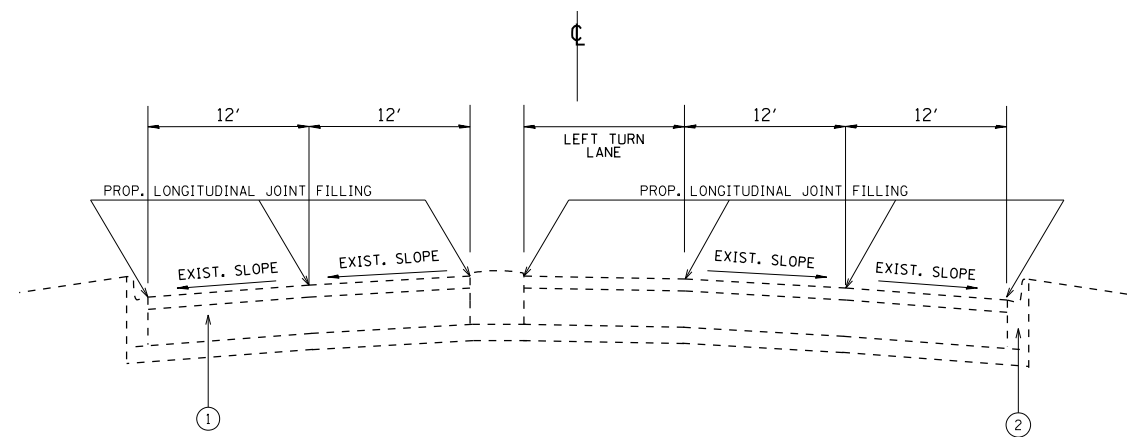
△ - NON-PARTICIPATING ITEM

REV-SEP



**TYPICAL SECTION
WITH MOUNTABLE MEDIAN
STA 24+00 TO STA 32+50
STA 49+00 TO STA 65+00**

- LEGEND**
- ① EXISTING PORTLAND CEMENT CONCRETE PAVEMENT - 10"
 - ② EXISTING CURB AND GUTTER



**TYPICAL SECTION
WITH MOUNTABLE MEDIAN AND LEFT TURN LANE
STA 8+95 TO STA 18+20
STA 75+00 TO STA 111+66**

MODEL: Default
 FILE: h:\mfc_projects\p101\planroom.dwg
 PROJECT: I:\Projects\147120\CADD\Drawings\DOT_Offices\147120\147120-shs-rps-cal.dwg

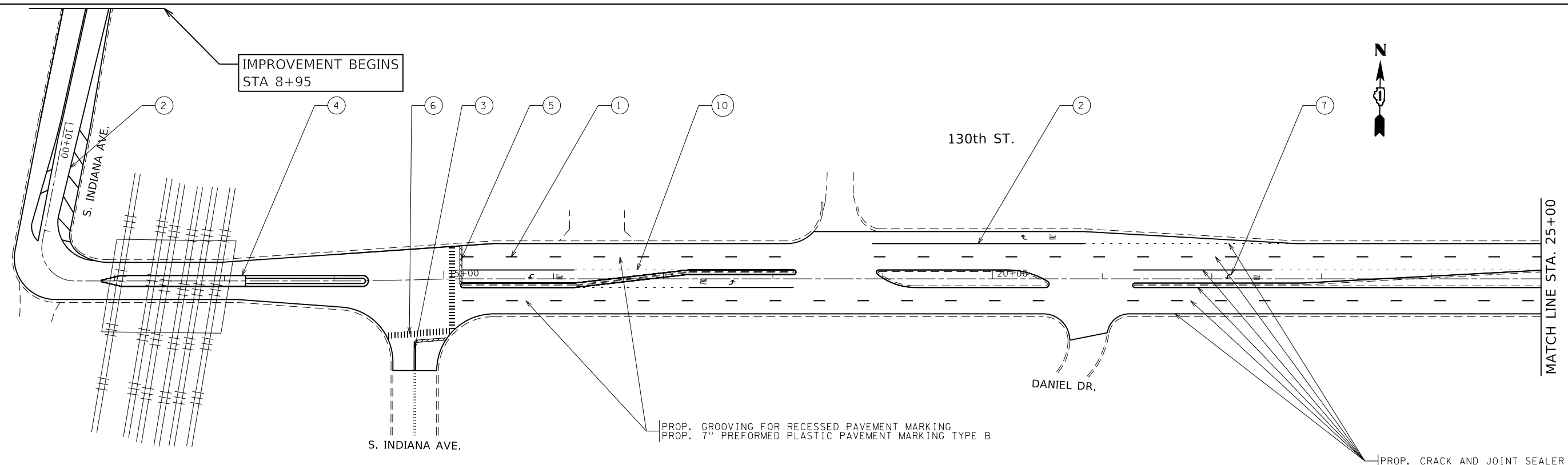
USER NAME = dumachia	DESIGNED -	REVISED -
	DRAWN -	REVISED -
PLOT SCALE = 100.0000' / in.	CHECKED -	REVISED -
PLOT DATE = 10/20/2020	DATE -	REVISED -

**STATE OF ILLINOIS
DEPARTMENT OF TRANSPORTATION**

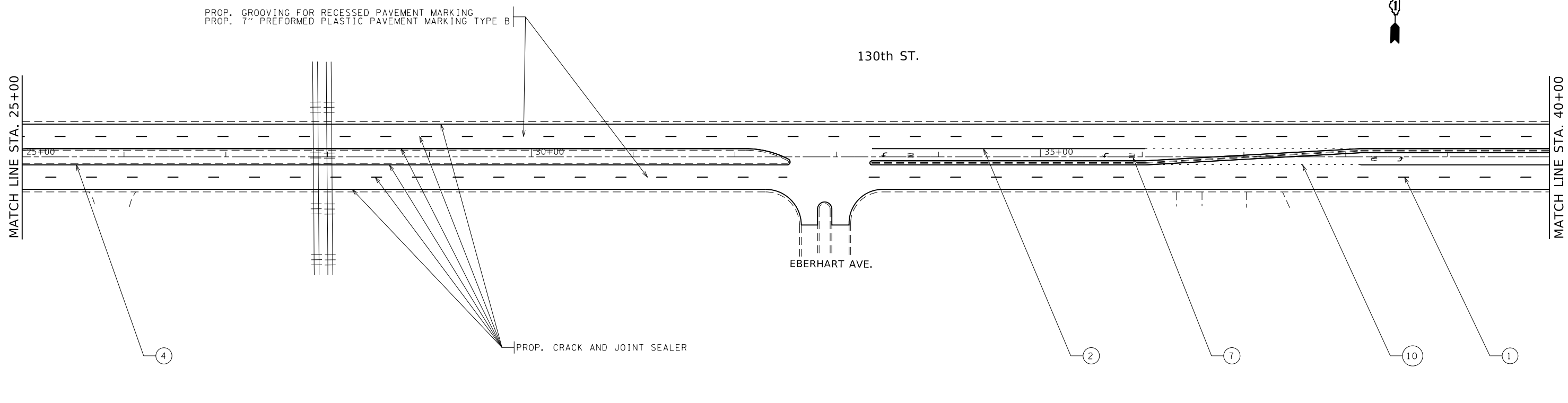
EXISTING ROADWAY CROSS SECTION
130TH ST - INDIANA AVE TO EAST OF I-94 (BISHOP FORD EXWY)
 SCALE: SHEET 1 OF 1 SHEETS STA. TO STA.

F.A.P. RTE.	SECTION	COUNTY	TOTAL SHEETS	SHEET NO.
344	2020-072-PP&SW	COOK	18	5
				CONTRACT NO. 62L50
		ILLINOIS	FED. AID PROJECT	

MODEL: Default
 FILE: h:\mhc\p\suplanroom.d\illinois.gov\PWIDOT\Documents\DOT_Offices\District_1\Projects\147120\CAD\Drawings\147120-sheet-6-lan.dgn



PAVEMENT MARKING LEGEND	
①	PROP. PREFORMED PLASTIC PAVEMENT MARKINGS TYPE B, INLAID CONTRAST 7", 10' DASH 30' SKIP, WHITE (TYP.)
②	PROP. MODIFIED URETHANE PVMT MARKING LINE 6", TURN LANE, WHITE (TYP.)
③	PROP. MODIFIED URETHANE PVMT MARKING LINE 4", DOUBLE YELLOW @ 11" C-C (TYP.)
④	PROP. MODIFIED URETHANE PVMT MARKING LINE 4", MEDIAN, YELLOW (TYP.)
⑤	PROP. MODIFIED URETHANE PVMT MARKING LINE 24", STOP BAR, WHITE (TYP.)
⑥	PROP. MODIFIED URETHANE PVMT MARKING LINE 24", CROSSWALK, WHITE (TYP.)
⑦	PROP. MODIFIED URETHANE PVMT MARKING, LETTERS AND SYMBOLS, WHITE (TYP.)
⑧	PROP. MODIFIED URETHANE PVMT MARKING LINE 8", GORE, WHITE (TYP.)
⑨	PROP. MODIFIED URETHANE PVMT MARKING LINE 12", DIAGONALS, WHITE (TYP.)
⑩	PROP. MODIFIED URETHANE PVMT MARKING LINE 6", 2'-6" SKIP-DASH, WHITE (TYP.)
⑪	PROP. MODIFIED URETHANE PVMT MARKING LINE 8", 3'-9" SKIP-DASH, WHITE (TYP.)



USER NAME = dumachia	DESIGNED -	REVISED -
	DRAWN -	REVISED -
PLOT SCALE = 100.0000' / in.	CHECKED -	REVISED -
PLOT DATE = 10/21/2020	DATE -	REVISED -

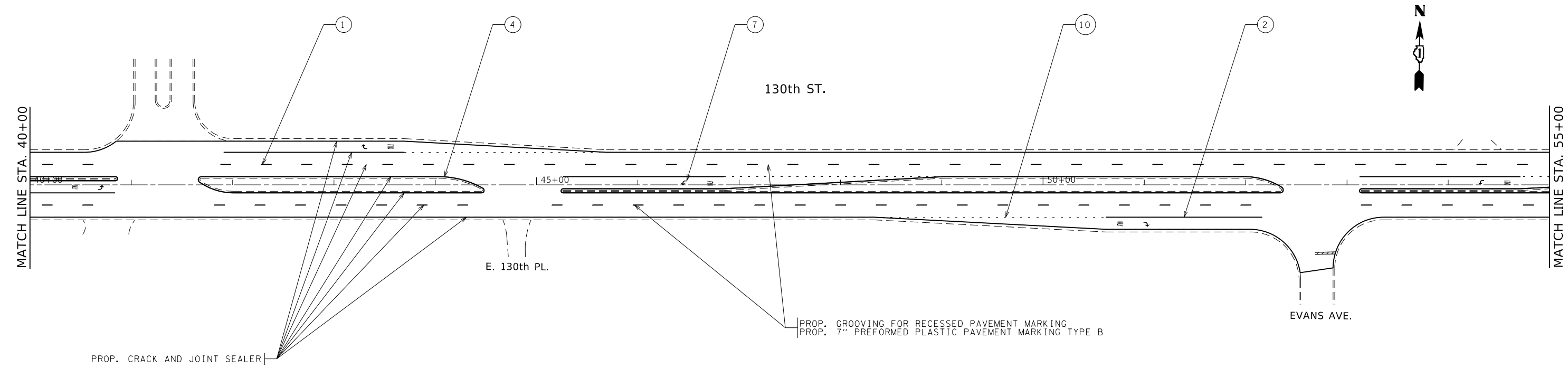
**STATE OF ILLINOIS
 DEPARTMENT OF TRANSPORTATION**

ROADWAY PLAN
130TH ST - INDIANA AVE TO EAST OF I-94 (BISHOP FORD EXWY)

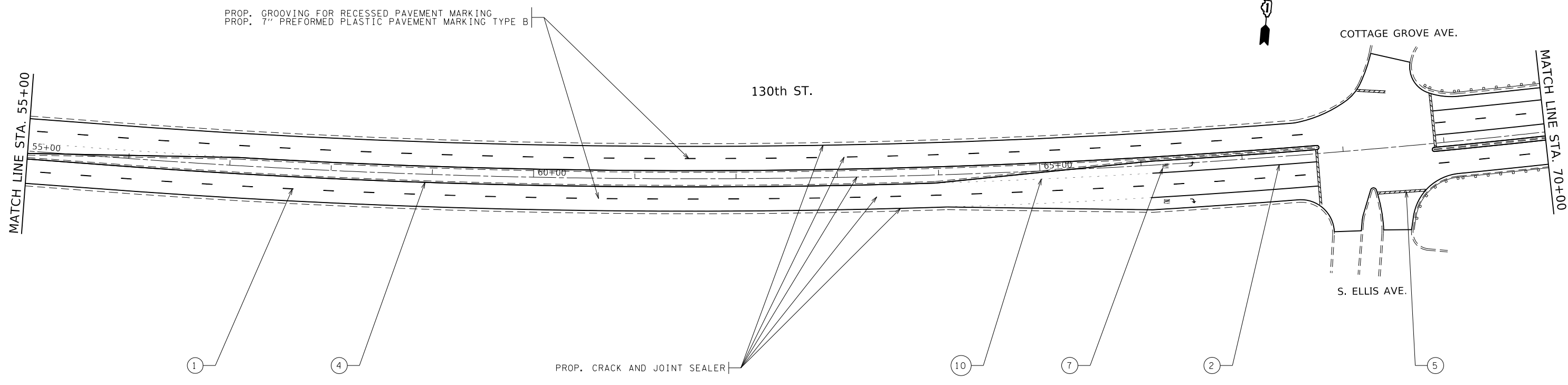
SCALE: 1"=50' SHEET 1 OF 4 SHEETS STA. TO STA.

F.A.P. RTE.	SECTION	COUNTY	TOTAL SHEETS	SHEET NO.
344	2020-072-PP&SW	COOK	18	6
CONTRACT NO. 62L50				
ILLINOIS FED. AID PROJECT				

MODEL: Default
 FILE: h:\mhc\p\suplanroom.d\illinois.gov\PI\DOT\Documents\DOT_Offices\Illinet\1\Projects\147120\CaddData\Design\147120-sh-ellb.dgn



PAVEMENT MARKING LEGEND	
①	PROP. PREFORMED PLASTIC PAVEMENT MARKINGS TYPE B, INLAID CONTRAST 7", 10' DASH 30' SKIP, WHITE (TYP.)
②	PROP. MODIFIED URETHANE PVMT MARKING LINE 6", TURN LANE, WHITE (TYP.)
③	PROP. MODIFIED URETHANE PVMT MARKING LINE 4", DOUBLE YELLOW @ 11" C-C (TYP.)
④	PROP. MODIFIED URETHANE PVMT MARKING LINE 4", MEDIAN, YELLOW (TYP.)
⑤	PROP. MODIFIED URETHANE PVMT MARKING LINE 24", STOP BAR, WHITE (TYP.)
⑥	PROP. MODIFIED URETHANE PVMT MARKING LINE 24", CROSSWALK, WHITE (TYP.)
⑦	PROP. MODIFIED URETHANE PVMT MARKING, LETTERS AND SYMBOLS, WHITE (TYP.)
⑧	PROP. MODIFIED URETHANE PVMT MARKING LINE 8", GORE, WHITE (TYP.)
⑨	PROP. MODIFIED URETHANE PVMT MARKING LINE 12", DIAGONALS, WHITE (TYP.)
⑩	PROP. MODIFIED URETHANE PVMT MARKING LINE 6", 2'-6" SKIP-DASH, WHITE (TYP.)
⑪	PROP. MODIFIED URETHANE PVMT MARKING LINE 8", 3'-9" SKIP-DASH, WHITE (TYP.)



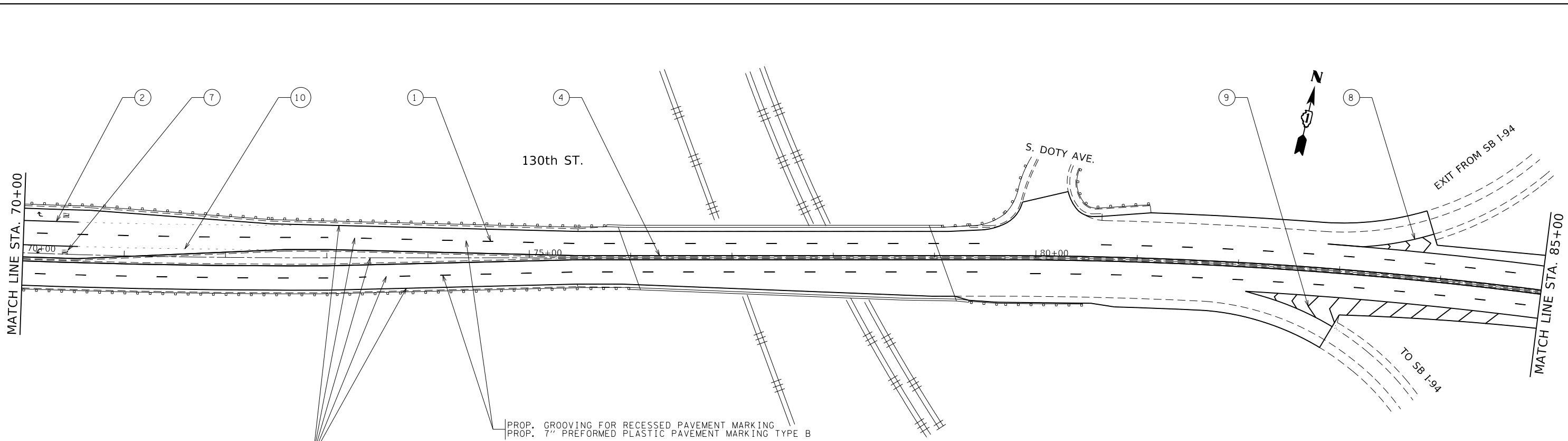
USER NAME = dumachia	DESIGNED -	REVISED -
PLOT SCALE = 100.0000' / in.	DRAWN -	REVISED -
PLOT DATE = 10/21/2020	CHECKED -	REVISED -
	DATE -	REVISED -

STATE OF ILLINOIS
DEPARTMENT OF TRANSPORTATION

ROADWAY PLAN
130TH ST - INDIANA AVE TO EAST OF I-94 (BISHOP FORD EXWY)

SCALE: 1"=50' SHEET 2 OF 4 SHEETS STA. TO STA.

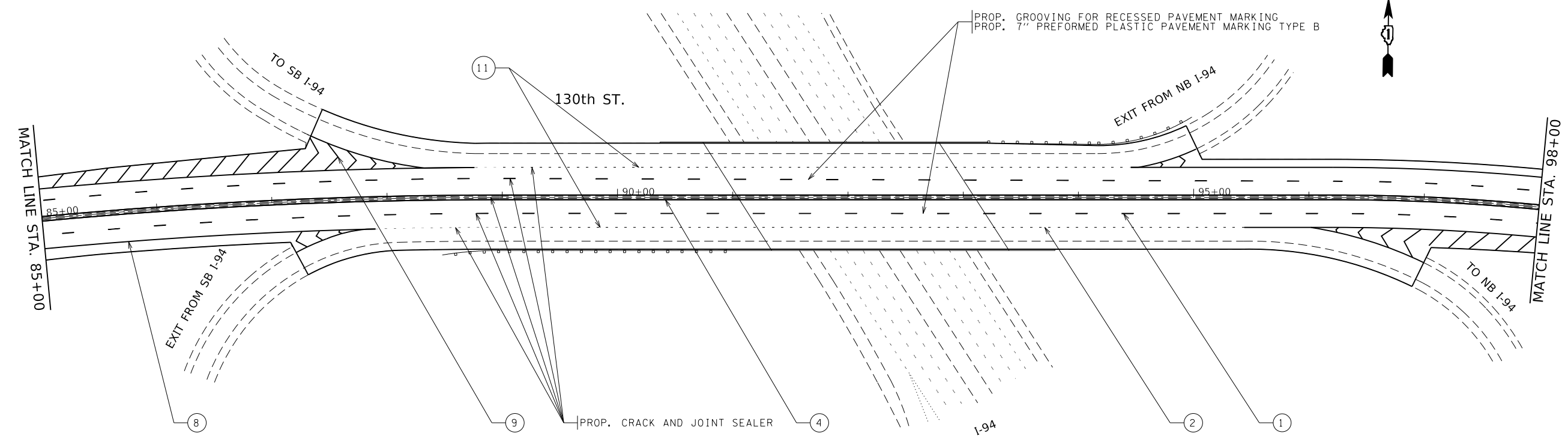
F.A.P. RTE. 344	SECTION 2020-072-PP&SW	COUNTY COOK	TOTAL SHEETS 18	SHEET NO. 7
ILLINOIS FED. AID PROJECT			CONTRACT NO. 62L50	



PROP. CRACK AND JOINT SEALER

PROP. GROOVING FOR RECESSED PAVEMENT MARKING
PROP. 7" PREFORMED PLASTIC PAVEMENT MARKING TYPE B

PAVEMENT MARKING LEGEND	
①	PROP. PREFORMED PLASTIC PAVEMENT MARKINGS TYPE B, INLAID CONTRAST 7", 10' DASH 30' SKIP, WHITE (TYP.)
②	PROP. MODIFIED URETHANE PVMT MARKING LINE 6", TURN LANE, WHITE (TYP.)
③	PROP. MODIFIED URETHANE PVMT MARKING LINE 4", DOUBLE YELLOW @ 11" C-C (TYP.)
④	PROP. MODIFIED URETHANE PVMT MARKING LINE 4", MEDIAN, YELLOW (TYP.)
⑤	PROP. MODIFIED URETHANE PVMT MARKING LINE 24", STOP BAR, WHITE (TYP.)
⑥	PROP. MODIFIED URETHANE PVMT MARKING LINE 24", CROSSWALK, WHITE (TYP.)
⑦	PROP. MODIFIED URETHANE PVMT MARKING, LETTERS AND SYMBOLS, WHITE (TYP.)
⑧	PROP. MODIFIED URETHANE PVMT MARKING LINE 8", GORE, WHITE (TYP.)
⑨	PROP. MODIFIED URETHANE PVMT MARKING LINE 12", DIAGONALS, WHITE (TYP.)
⑩	PROP. MODIFIED URETHANE PVMT MARKING LINE 6", 2' - 6" SKIP-DASH, WHITE (TYP.)
⑪	PROP. MODIFIED URETHANE PVMT MARKING LINE 8", 3' - 9" SKIP-DASH, WHITE (TYP.)



PROP. CRACK AND JOINT SEALER

PROP. GROOVING FOR RECESSED PAVEMENT MARKING
PROP. 7" PREFORMED PLASTIC PAVEMENT MARKING TYPE B

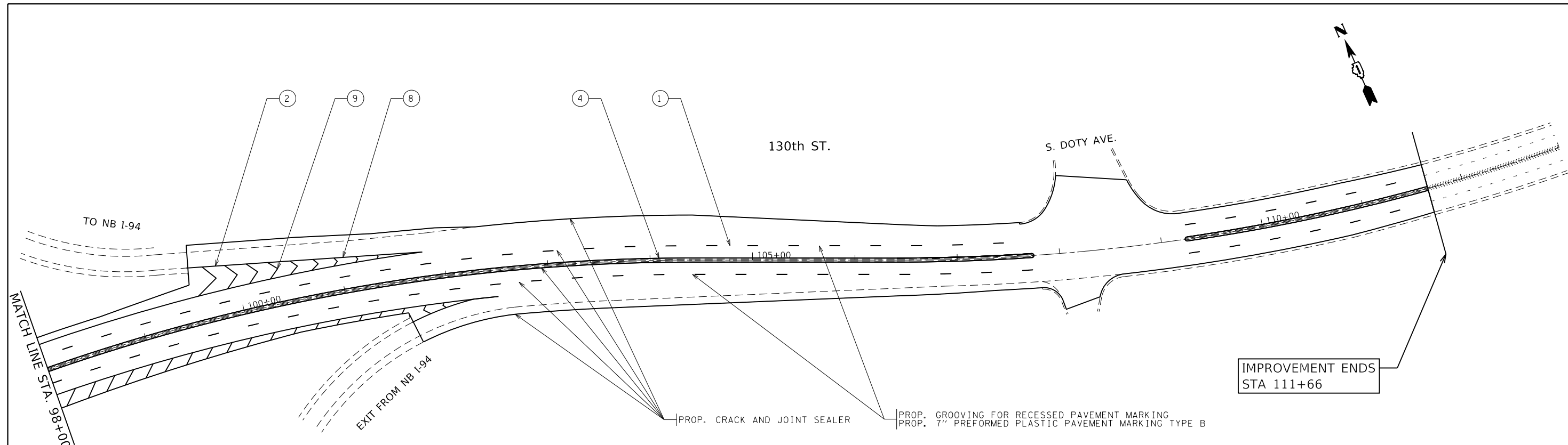
MODEL: Default
 FILE: \\nrcs-pub\pubroom\dat\illinois\pwr\DOT\Documents\DOT_Offices\Illinet\1\Projects\147120\CADD\Drawings\147120-sh-1-bn.dgn

USER NAME = dumachia	DESIGNED -	REVISED -
PLOT SCALE = 100.0000' / in.	DRAWN -	REVISED -
PLOT DATE = 10/21/2020	CHECKED -	REVISED -
	DATE -	REVISED -

**STATE OF ILLINOIS
DEPARTMENT OF TRANSPORTATION**

ROADWAY PLAN
130TH ST - INDIANA AVE TO EAST OF I-94 (BISHOP FORD EXWY)
 SCALE: 1"=50' SHEET 3 OF 4 SHEETS STA. TO STA.

F.A.P. RTE. 344	SECTION 2020-072-PP&SW	COUNTY COOK	TOTAL SHEETS 18	SHEET NO. 8
ILLINOIS FED. AID PROJECT			CONTRACT NO. 62L50	



PROP. CRACK AND JOINT SEALER
 PROP. GROOVING FOR RECESSED PAVEMENT MARKING
 PROP. 7" PREFORMED PLASTIC PAVEMENT MARKING TYPE B

PAVEMENT MARKING LEGEND	
① PROP. PREFORMED PLASTIC PAVEMENT MARKINGS TYPE B, INLAID CONTRAST 7", 10' DASH 30' SKIP, WHITE (TYP.)	⑥ PROP. MODIFIED URETHANE PVMT MARKING LINE 24", CROSSWALK, WHITE (TYP.)
② PROP. MODIFIED URETHANE PVMT MARKING LINE 6", TURN LANE, WHITE (TYP.)	⑦ PROP. MODIFIED URETHANE PVMT MARKING, LETTERS AND SYMBOLS, WHITE (TYP.)
③ PROP. MODIFIED URETHANE PVMT MARKING LINE 4", DOUBLE YELLOW @ 11" C-C (TYP.)	⑧ PROP. MODIFIED URETHANE PVMT MARKING LINE 8", GORE, WHITE (TYP.)
④ PROP. MODIFIED URETHANE PVMT MARKING LINE 4", MEDIAN, YELLOW (TYP.)	⑨ PROP. MODIFIED URETHANE PVMT MARKING LINE 12", DIAGONALS, WHITE (TYP.)
⑤ PROP. MODIFIED URETHANE PVMT MARKING LINE 24", STOP BAR, WHITE (TYP.)	⑩ PROP. MODIFIED URETHANE PVMT MARKING LINE 6", 2' - 6' SKIP-DASH, WHITE (TYP.)
	⑪ PROP. MODIFIED URETHANE PVMT MARKING LINE 8", 3' - 9' SKIP-DASH, WHITE (TYP.)

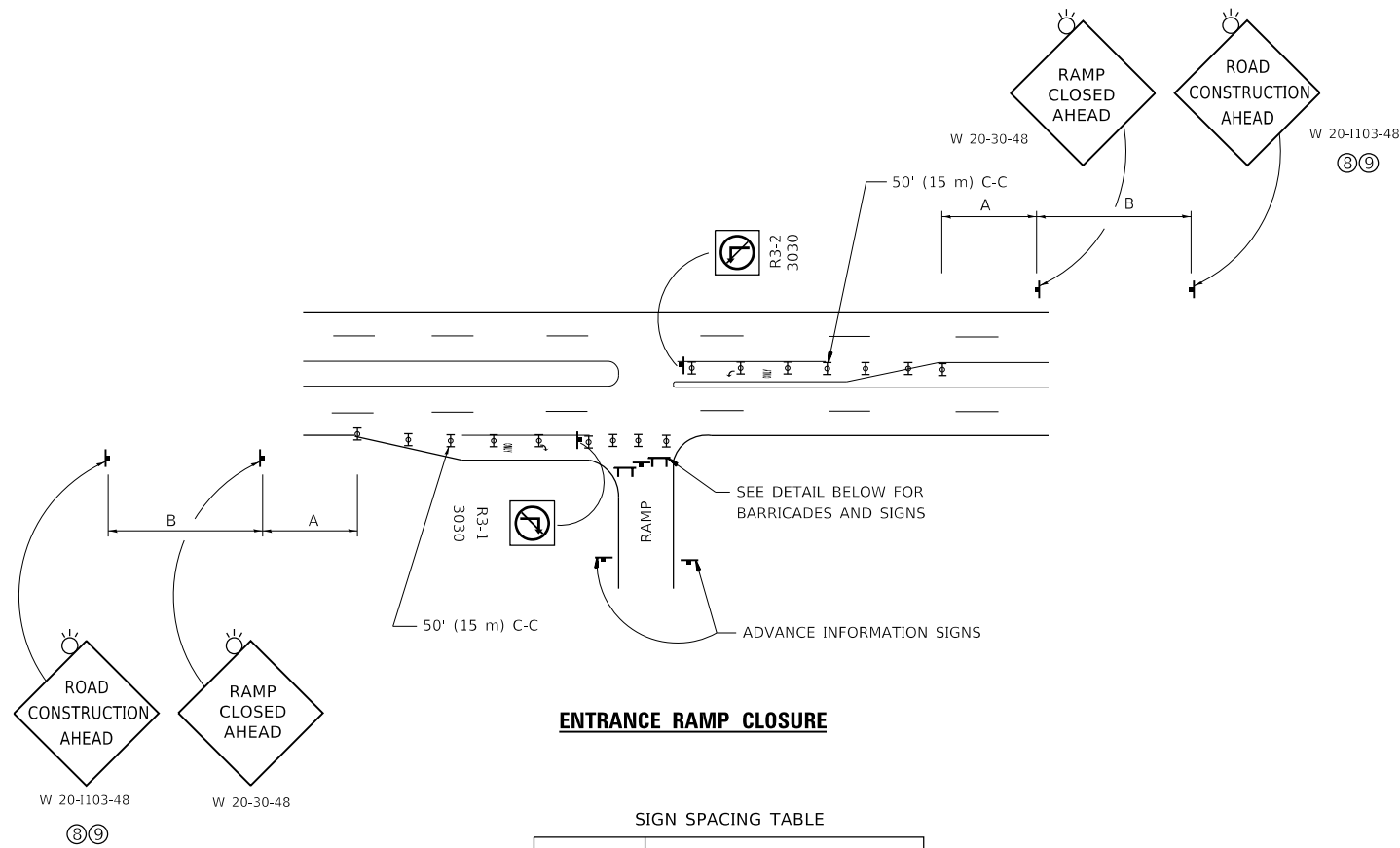
MODEL: Default
 FILE: h:\mfc_p\pub\harramom.d\illinois.gov\PWIDOT\Documents\DOT_Offices\District_1\Projects\147120\CaddData\Design\147120-sh-4-lb-0.dgn

USER NAME = dumachia	DESIGNED -	REVISED -
	DRAWN -	REVISED -
PLOT SCALE = 100.0000' / in.	CHECKED -	REVISED -
PLOT DATE = 10/21/2020	DATE -	REVISED -

STATE OF ILLINOIS
DEPARTMENT OF TRANSPORTATION

ROADWAY PLAN
130TH ST - INDIANA AVE TO EAST OF I-94 (BISHOP FORD EXWY)
 SCALE: 1"=50' SHEET 4 OF 4 SHEETS STA. TO STA.

F.A.P. RTE.	SECTION	COUNTY	TOTAL SHEETS	SHEET NO.
344	2020-072-PP&SW	COOK	18	9
CONTRACT NO. 62L50				
ILLINOIS FED. AID PROJECT				

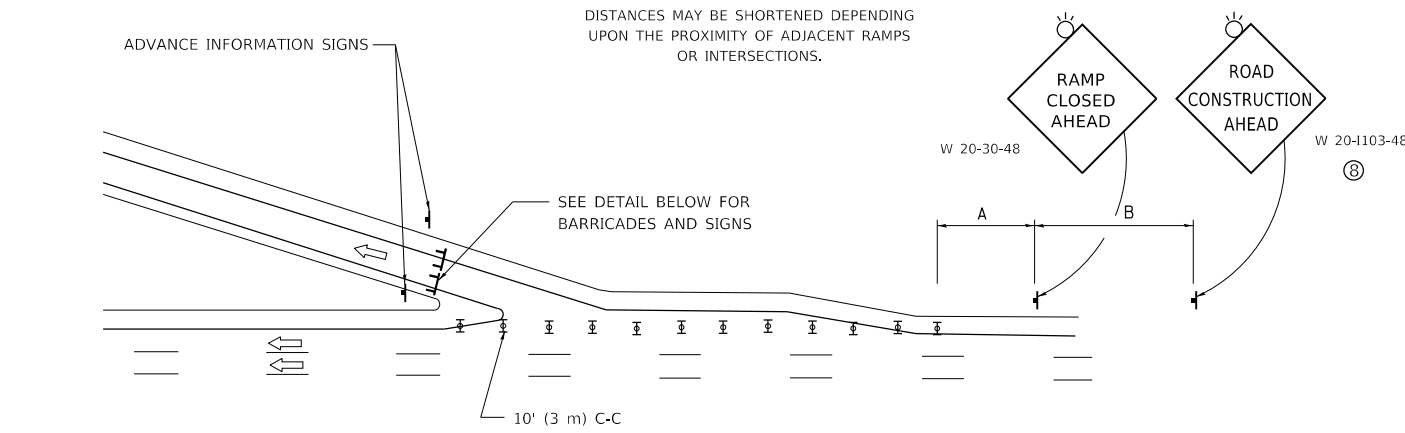


ENTRANCE RAMP CLOSURE

SIGN SPACING TABLE

FACILITY	DISTANCE BETWEEN SIGNS	
	A	B
EXPRESSWAY >24 HOURS	1000' (300 m)	1500' (450 m)
EXPRESSWAY ≤24 HOURS	500' (150 m)	500' (150 m)
ARTERIAL 55 MPH	500' (150 m)	500' (150 m)
ARTERIAL 50-45 MPH	350' (100 m)	350' (100 m)
ARTERIAL <45 MPH	200' (60 m)	200' (60 m)

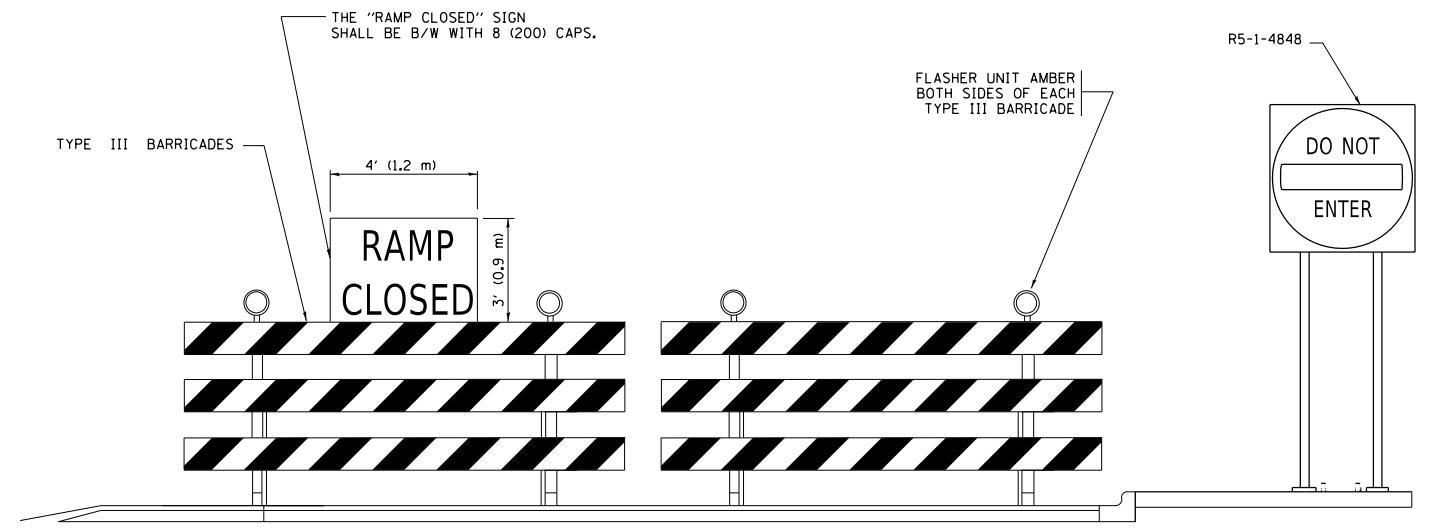
DISTANCES MAY BE SHORTENED DEPENDING UPON THE PROXIMITY OF ADJACENT RAMPS OR INTERSECTIONS.



EXIT RAMP CLOSURE

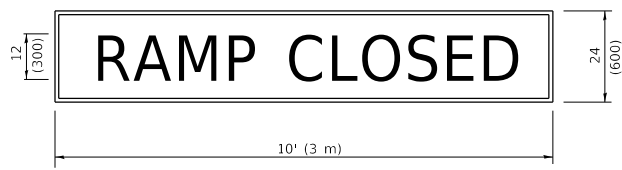
SYMBOLS

- ▬ TYPE II BARRICADE OR DRUM
- ▬ TYPE III BARRICADE WITH 2 FLASHING LIGHTS



DETAIL FOR REQUIRED BARRICADES & SIGNS

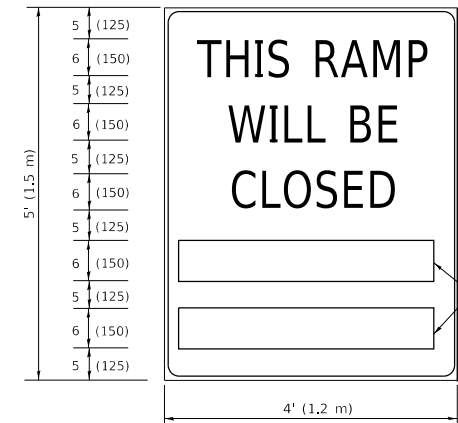
RAMP CLOSURE ADVANCE WARNING SIGN



BLACK LEGEND ON ORANGE BACKGROUND MOUNTED DIAGONALLY
E MOD FONT
1 (25) BORDER

THESE SIGNS ARE REQUIRED ON ALL THE EXIT GUIDE SIGNS FOR EXIT RAMPS THAT WILL BE CLOSED FOR MORE THAN FOUR (4) CONSECUTIVE DAYS.

RAMP CLOSURE ADVANCE INFORMATION SIGN



BLACK LEGEND ON WHITE BACKGROUND

1/2 (12) BORDER

E MOD FONT

THESE BLANK AREAS SHALL BE FILLED WITH THE DATES AND THE TIME THAT THE RAMP WILL BE CLOSED.

THESE SIGNS ARE REQUIRED ON BOTH SIDES OF THE RAMP, MINIMUM OF 1 WEEK IN ADVANCE OF THE CLOSURE.

THESE SIGNS SHALL BE FABRICATED AND PAID FOR ACCORDING TO THE TEMPORARY INFORMATION SIGNING SPECIAL PROVISION

GENERAL NOTES:

- ① CONES MAY BE SUBSTITUTED FOR DRUMS OR TYPE II BARRICADES DURING DAY OPERATIONS. CONES SHALL BE A MINIMUM OF 28 (700) HIGH.
- ② VERTICAL BARRICADES SHALL NOT BE USED FOR RAMP CLOSURES.
- ③ A FLAGGER SHALL BE POSITIONED AT EACH CLOSED RAMP THAT IS OPEN TO CONSTRUCTION VEHICLES, PRECEDED BY A W20-7 FLAGGER WARNING SIGN.
- ④ ALL ROUTE MARKERS AND TRAILBLAZER ASSEMBLIES WHICH DIRECT MOTORISTS TO A CLOSED ENTRANCE RAMP SHALL BE COVERED WHEN THE RAMP IS CLOSED FOR MORE THAN FOUR (4) DAYS.
- ⑤ THE SIGNING AND BARRICADING WHICH IS REQUIRED BY THIS DETAIL SHALL BE INCLUDED IN THE COST OF TRAFFIC CONTROL AND PROTECTION (EXPRESSWAYS).
- ⑥ AUTHORIZATION FROM THE DISTRICT'S BUREAU OF TRAFFIC IS REQUIRED FOR ALL RAMP CLOSURES.
- ⑦ THE RAMP CLOSURE ADVANCE INFORMATION SIGNS SHALL BE ERECTED IF THE CLOSURE TIME EXCEEDS TWENTY-FOUR (24) HOURS. ADDITIONAL ADVANCE WARNING SIGNS ON EXIT GUIDE SIGNING WILL BE REQUIRED FOR EXIT RAMP CLOSURES THAT EXCEED FOUR (4) DAYS IN LENGTH.
- ⑧ ROAD CONSTRUCTION AHEAD SIGNS MAY BE OMITTED WHEN THIS DETAIL IS USED IN CONJUNCTION WITH OTHER TRAFFIC CONTROL THAT ALREADY INCLUDES A ROAD CONSTRUCTION AHEAD SIGN.
- ⑨ ARTERIAL ROAD CONSTRUCTION AHEAD SIGNS SHALL BE INSTALLED ON THE LEFT SIDE OF TRAFFIC IF THE MEDIAN IS MORE THAN 10 FT WIDE.

ALL DIMENSIONS ARE IN INCHES (MILLIMETERS) UNLESS OTHERWISE SHOWN.

MODEL: Default
FILE: \\nashville.pva\pub\baron\m.dumachia\p\w\dot\Documents\DOT - Offices\District 1\Projects\147120\CaddData\Design\DESIGN.dgn

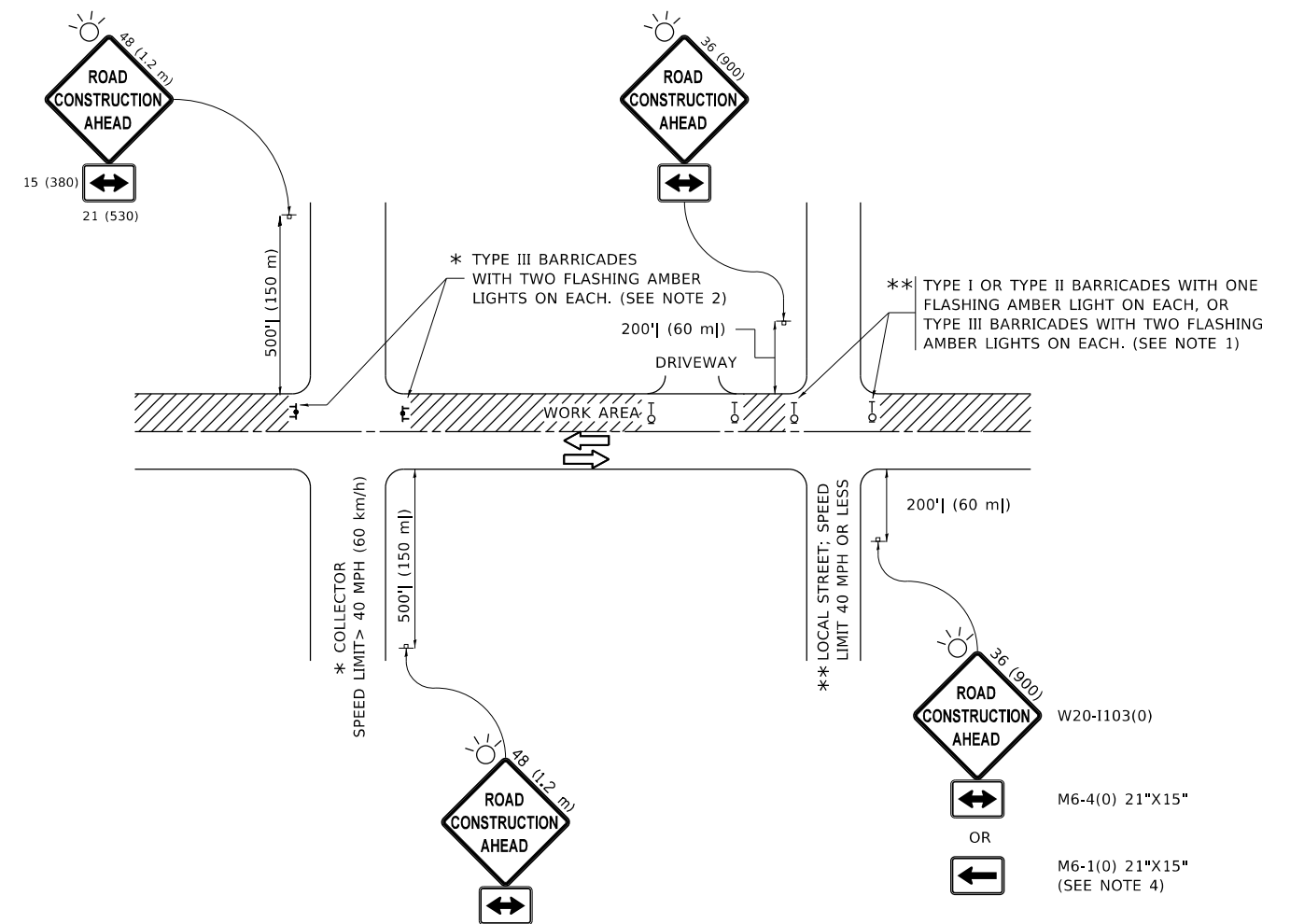
USER NAME = dumachia	DESIGNED - D.W.S.	REVISED - S.P.B._01-07
DRAWN -	REVISED - S.P.B._12-09	
PLOT SCALE = 100.0000' / in.	CHECKED -	REVISED - M.D._06-13
PLOT DATE = 10/20/2020	DATE - 02-83	REVISED - M.D._01-18

**STATE OF ILLINOIS
DEPARTMENT OF TRANSPORTATION**

**ENTRANCE_AND_EXIT_RAMP
CLOSURE_DETAILS**

SCALE: NONE SHEET 1 OF 1 SHEETS STA. TO STA.

F.A.P. RTE.	SECTION	COUNTY	TOTAL SHEETS	SHEET NO.
344	2020-072-PP6SW	COOK	18	10
TC-08		CONTRACT NO. 62L50		
ILLINOIS		FED. AID PROJECT		



NOTES:

1. SIDE ROAD WITH A SPEED LIMIT OF 40 MPH (60 km/h) OR LESS AS SHOWN ON THE DRAWING AND AS DIRECTED BY THE ENGINEER:
 - a) ONE "ROAD CONSTRUCTION AHEAD" SIGN 36 x 36 (900x900) WITH A FLASHER MOUNTED ON IT APPROXIMATELY 200' (60 m) IN ADVANCE OF THE MAIN ROUTE.
 - b) THE CLOSED PORTION OF THE MAIN ROUTE SHALL BE PROTECTED BY BLOCKING WITH TYPE I, TYPE II OR TYPE III BARRICADES, 1/3 OF THE CROSS SECTION OF THE CLOSED PORTION.
2. SIDE ROAD WITH A SPEED LIMIT GREATER THAN 40 MPH (60 km/h) AS SHOWN ON THE DRAWING AND AS DIRECTED BY THE ENGINEER:
 - a) ONE "ROAD CONSTRUCTION AHEAD" SIGN 48 x 48 (1.2 m x 1.2 m) WITH A FLASHER MOUNTED ON IT APPROXIMATELY 500' (150 m) IN ADVANCE OF THE MAIN ROUTE.
 - b) BLOCKING WITH TYPE III BARRICADES, 1/2 OF THE CROSS SECTION OF THE CLOSED PORTION.
3. CONES MAY BE SUBSTITUTED FOR BARRICADES OR DRUMS AT HALF THE SPACING DURING DAY OPERATIONS. CONES SHALL BE A MINIMUM OF 28 (710) IN HEIGHT.
4. SIGNING AND THE WORK ZONE, A SINGLE HEADED ARROW (M6-1) SHALL BE USED IN LIEU OF THE DOUBLE HEADED ARROW (M6-4).
5. WHEN WORK IS BEING PERFORMED ON A SIDE ROAD OR DRIVEWAY, FOLLOW THE APPLICABLE STANDARD(S). THE DIRECTIONAL ARROW (M6-1 OR M6-4) SHALL BE COVERED OR REMOVED WHEN NO LONGER CONSISTENT WITH THE TRAFFIC CONTROL SET-UP.
6. ADVANCE WARNING SIGNS ARE TO BE OMITTED ON DRIVEWAYS UNLESS OTHERWISE SPECIFIED IN THE PLANS OR BY THE ENGINEER.
7. THE TRAFFIC CONTROL AND PROTECTION FOR SIDE ROADS, INTERSECTIONS, AND DRIVEWAYS SHALL BE INCLUDED IN THE COST OF SPECIFIED TRAFFIC CONTROL STANDARDS OR ITEMS.

All dimensions are in inches (millimeters) unless otherwise shown.

MODEL: Default
 FILE: \\nashville-prod\planroom\dat\illinois\gov\pww\DOT\Documents\DOT_Offices\Director_1\Projects\147120\CADD\Drawings\Design\DESIGN.dgn

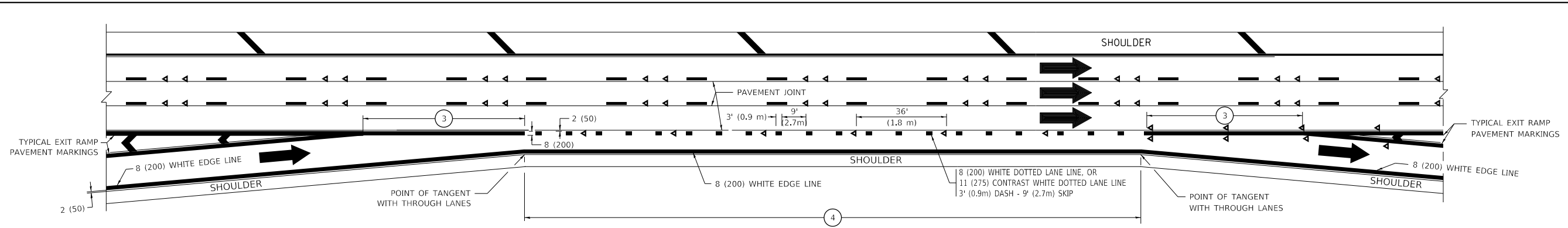
USER NAME = dumachia	DESIGNED - L.H.A.	REVISED - A. HOUSEH 10-15-96
PLOT SCALE = 100.0000' / in.	CHECKED -	REVISED - T. RAMMACHER 01-06-00
PLOT DATE = 10/20/2020	DATE - 06-89	REVISED - A. SCHUETZE 07-01-13
		REVISED - A. SCHUETZE 09-15-16

**STATE OF ILLINOIS
DEPARTMENT OF TRANSPORTATION**

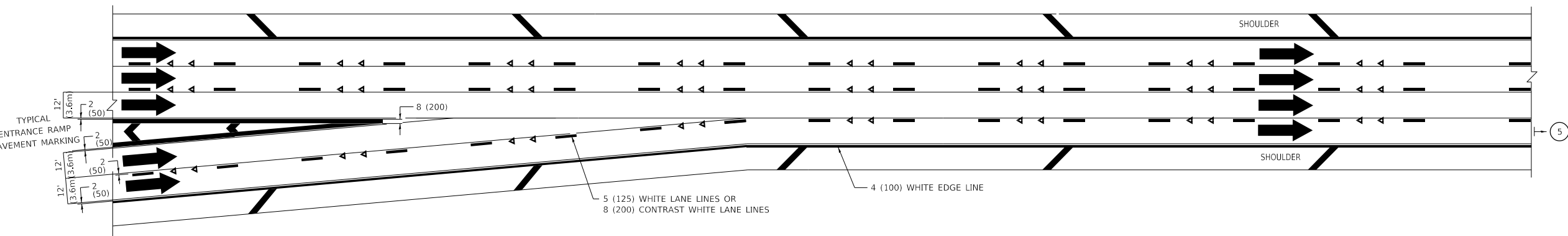
**TRAFFIC CONTROL AND PROTECTION FOR
SIDE ROADS, INTERSECTIONS, AND DRIVEWAYS**

SCALE: NONE SHEET 1 OF 1 SHEETS STA. TO STA.

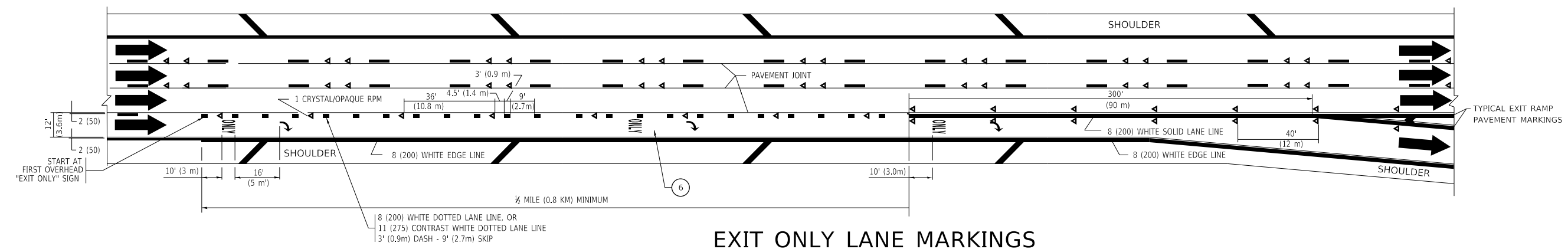
F.A.P. RTE.	SECTION	COUNTY	TOTAL SHEETS	SHEET NO.
344	2020-072-PP&SW	COOK	18	11
TC-10			CONTRACT NO.	62L50
ILLINOIS FED. AID PROJECT				



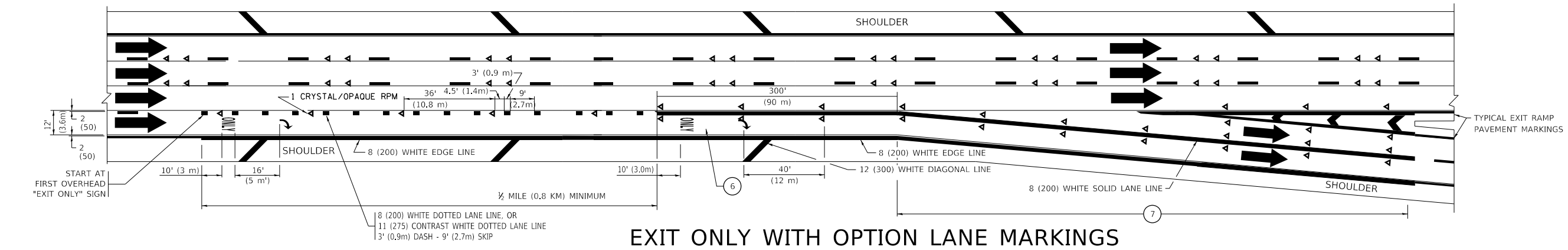
AUXILIARY LANE MARKINGS



TWO LANE ENTRANCE RAMP WITH MERGE MARKINGS



EXIT ONLY LANE MARKINGS



EXIT ONLY WITH OPTION LANE MARKINGS

- NOTES:**
- OMIT WHEN LENGTH OF AUXILIARY LANE IS LESS THAN 500' (150 m).
 - 8-INCH WIDE DOTTED LANE LINE MARKINGS SHALL BE USED WHEN THE LENGTH OF THE AUXILIARY LANE IS 2 MILES OR LESS.
 - FOR TWO-LANE ENTRANCE RAMP, IF RIGHT LANE ENDS, USE TYPICAL ENTRANCE RAMP PAVEMENT MARKINGS.
 - ONLY AND ARROWS EQUALLY SPACED, 500' (150 m) MAXIMUM SPACING. FULL SIZE LETTERS AND ARROW SHALL BE USED.
 - CONTINUE 8" SOLID LANE LINE THROUGH EXIT TO END OF PAVED GORE.

MODEL: Default
 FILE: \\nlsdc-pub\pub\room\dat\illinois\pwr\DOT\Documents\DOT-Office\Drawings\1\Projects\147120\CADD\Drawings\Design\DES\4.dwg

USER NAME = dumachia	DESIGNED - D.W.S.	REVISED - J.A.F. 02-06
	DRAWN -	REVISED - S.P.B. 01-07
PLOT SCALE = 100,0000' / in.	CHECKED -	REVISED - S.P.B. 01-10
PLOT DATE = 10/20/2020	DATE - 01-90	REVISED - M.D. 09-17

**STATE OF ILLINOIS
 DEPARTMENT OF TRANSPORTATION**

**MULTI-LANE FREEWAY
 PAVEMENT MARKING DETAILS**

SCALE: NONE	SHEET 1 OF 2 SHEETS	STA. TO STA.
-------------	---------------------	--------------

F.A.P. RTE.	SECTION	COUNTY	TOTAL SHEETS	SHEET NO.
344	2020-072-PP&SW	COOK	18	13
TC-12		CONTRACT NO. 62150		
ILLINOIS		FED. AID PROJECT		

TURN BAY ENTRANCE AT START OF LANE CLOSURE TAPER

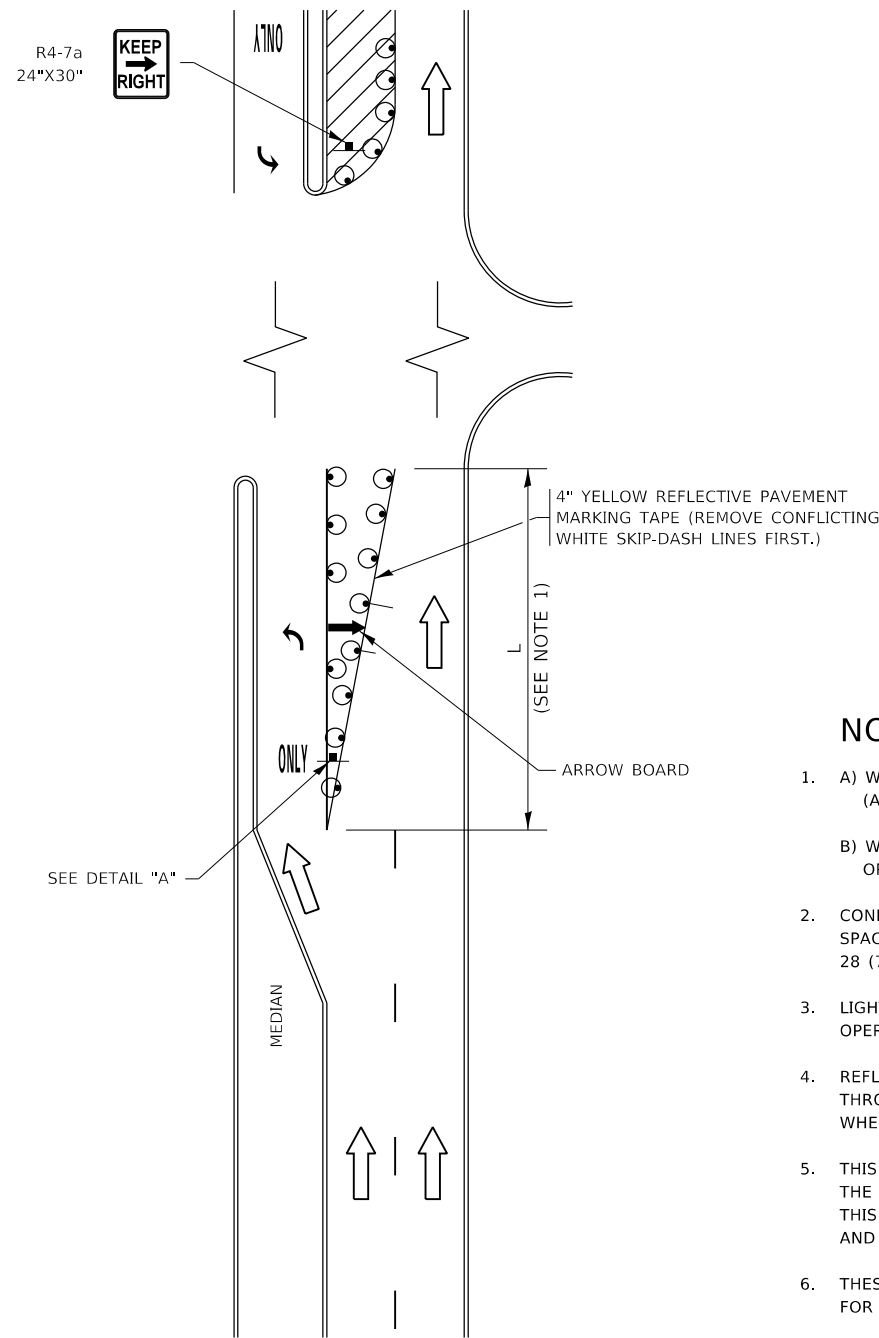


FIGURE 1

TURN BAY ENTRANCE WITHIN A LANE CLOSURE

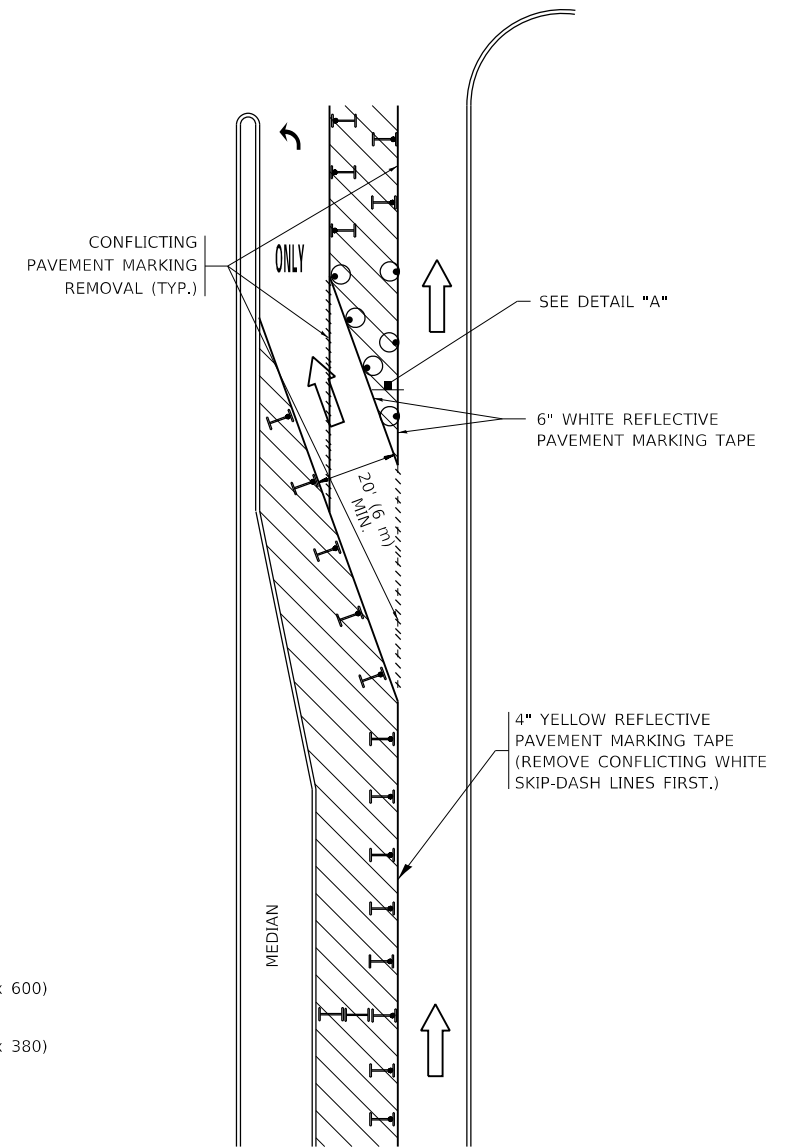


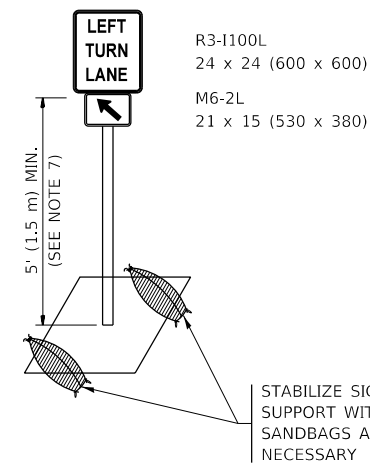
FIGURE 2

LEGEND

- WORK AREA
- LANE OPEN TO TRAFFIC
- ARROW BOARD
- TYPE I OR II BARRICADE OR DRUM WITH STEADY BURN LIGHT
- DRUM WITH STEADY BURN LIGHT
- SIGN ASSEMBLY
- TYPE I OR II CHECK BARRICADE WITH FLASHING LIGHT

NOTES:

1. A) WHEN "L" IS ≤ THE STORAGE LENGTH OF THE TURN LANE (AS SHOWN IN FIG. 1), USE FIGURE 1.
B) WHEN "L" IS > THE STORAGE LENGTH OF THE TURN LANE OR THE TURN LANE IS WITHIN THE LANE CLOSURE, USE FIGURE 2.
2. CONES MAY BE SUBSTITUTED FOR BARRICADES OR DRUMS AT HALF THE SPACING DURING DAY OPERATIONS. CONES SHALL BE A MINIMUM OF 28 (710) IN HEIGHT.
3. LIGHTS WILL NOT BE REQUIRED ON BARRICADES OR DRUMS FOR DAY OPERATIONS. ALL LIGHTS SHALL BE MONODIRECTIONAL.
4. REFLECTIVE TEMPORARY PAVEMENT MARKINGS SHALL BE PLACED THROUGHOUT THE BARRICADED AREAS OF EACH TURN BAY AS SHOWN WHERE THE CLOSURE TIME IS GREATER THAN FOURTEEN (14) DAYS.
5. THIS APPLICATION ALSO APPLIES WHEN WORK IS BEING PERFORMED IN THE RIGHT LANE(S) AND THE RIGHT TURN BAY IS TO REMAIN OPEN. UNDER THIS CONDITION, "RIGHT TURN LANE" R3-1100R 24 x 24 (600 x 600) AND M6-2R 21 x 15 (530 x 380) SHALL BE USED.
6. THESE CONTROLS SHALL SUPPLEMENT MAINLINE TRAFFIC CONTROL FOR LANE CLOSURES.
7. THE SIGNS SHALL BE MOUNTED ABOVE THE BARRICADES/DRUMS ON SEPARATE SIGN SUPPORTS THAT MEET NCHRP 350 OR MASH REQUIREMENTS.
8. TRAFFIC CONTROL AND PROTECTION AT TURN BAYS (TO REMAIN OPEN TO TRAFFIC) SHALL BE INCLUDED IN THE COST OF SPECIFIED TRAFFIC CONTROL STANDARDS OR ITEMS.



DETAIL A

All dimensions are in inches (millimeters) unless otherwise shown.

MODEL: Default
FILE: h:\mhc\p\pub\room.d\at\links.gov\PIWDOT\Documents\DOT_Offices\Illin\1\Projects\147120\CADD\Design\Design\Design.dgn

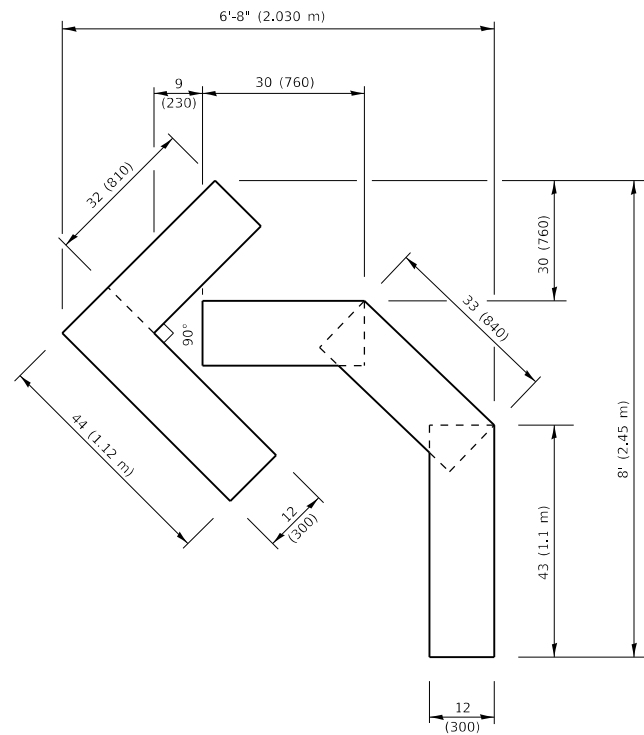
USER NAME = dumachia	DESIGNED - T. RAMMACHER 09-08-94	REVISED - R. BORO 09-14-09
	DRAWN - A. HOUSEH 11-07-95	REVISED - A. SCHUETZE 07-01-13
PLOT SCALE = 100,0000' / in.	CHECKED - A. HOUSEH 10-12-96	REVISED - A. SCHUETZE 09-15-16
PLOT DATE = 10/20/2020	DATE - T. RAMMACHER 01-06-00	REVISED -

**STATE OF ILLINOIS
DEPARTMENT OF TRANSPORTATION**

**TRAFFIC CONTROL AND PROTECTION AT TURN BAYS
(TO REMAIN OPEN TO TRAFFIC)**

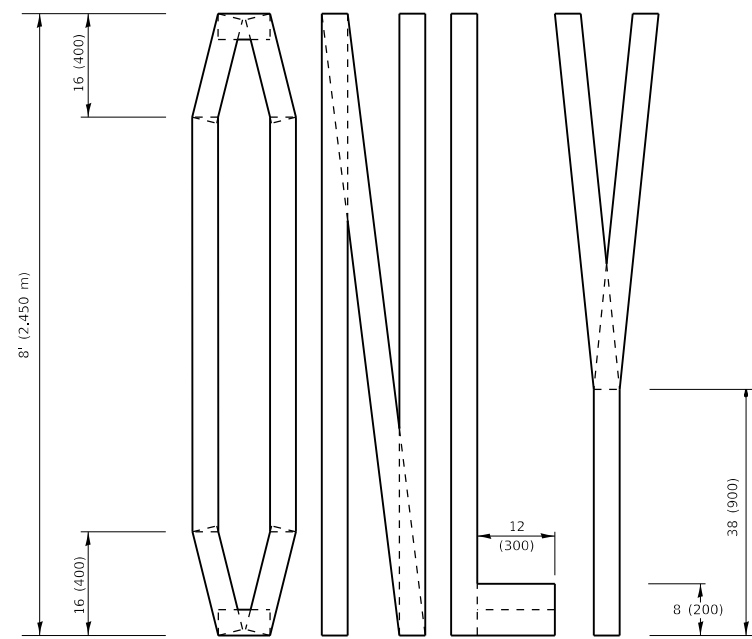
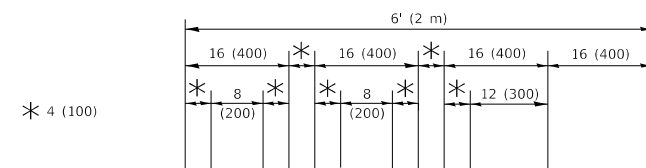
F.A.P. RTE.	SECTION	COUNTY	TOTAL SHEETS	SHEET NO.
344	2020-072-PP&SW	COOK	18	14
TC-14			CONTRACT NO.	62L50
ILLINOIS		FED. AID PROJECT		

SCALE: NONE SHEET 1 OF 1 SHEETS STA. TO STA.



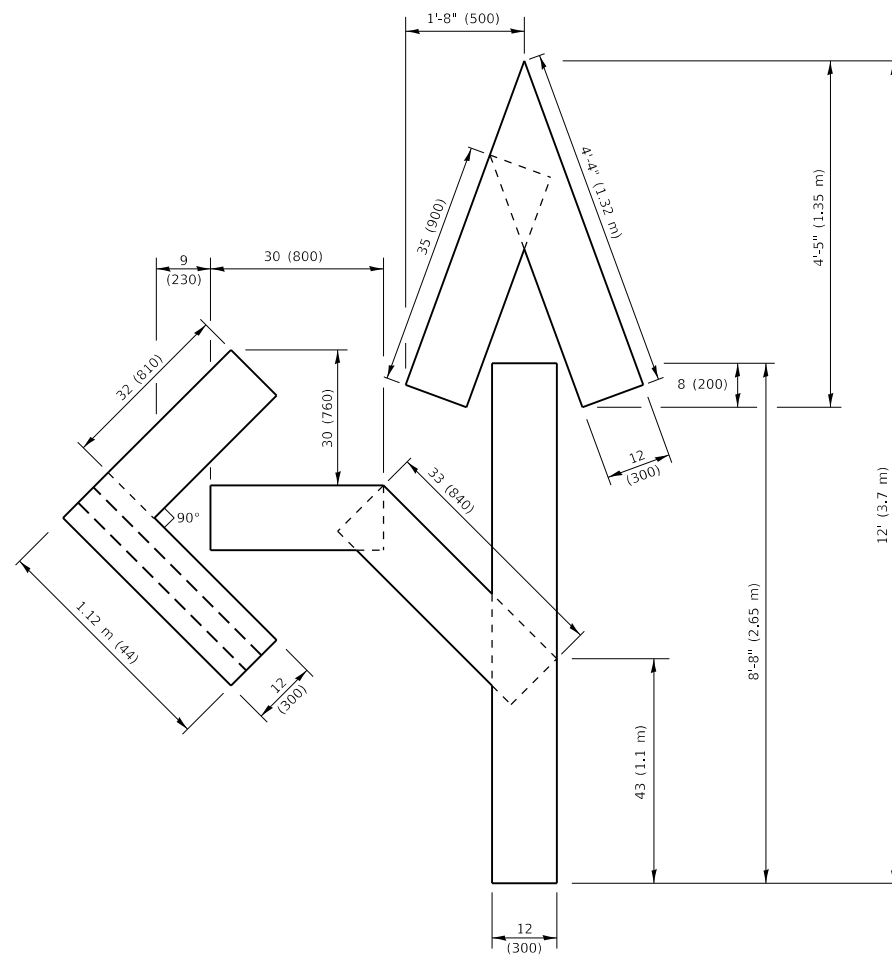
QUANTITY

4 (100) LINE = 45.5 ft. (13.9 m)
15.2 sq. ft. (1.41 sq. m)



QUANTITY

4 (100) LINE = 64.1 ft. (19.5 m)
21.4 sq. ft. (1.99 sq. m)

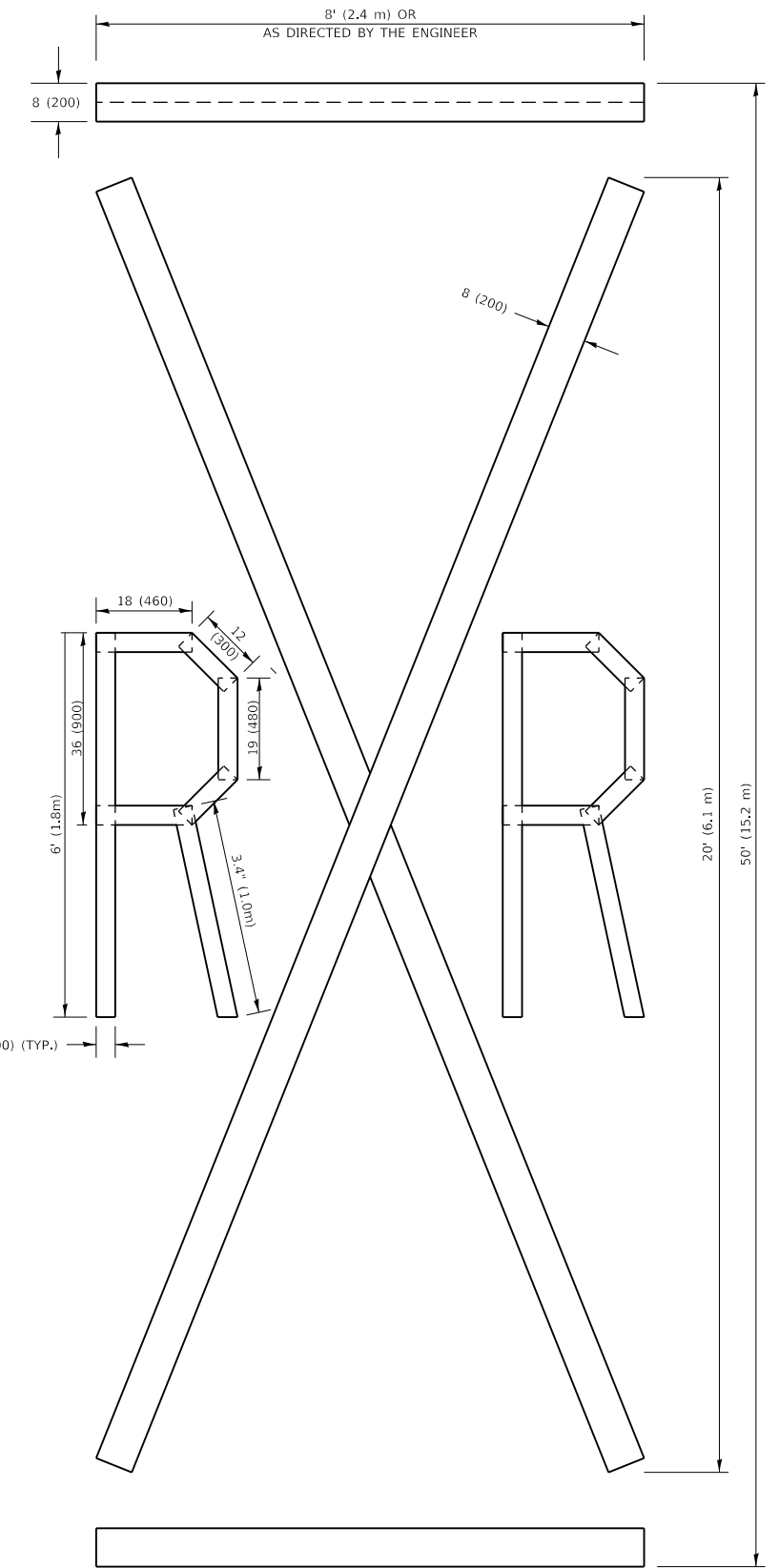


QUANTITY

4 (100) LINE = 82.5 ft. (25.1 m)
27.5 sq. ft. (2.53 sq. m)

NOTE:

ALL QUANTITIES OF PLACEMENT ARE REPRESENTED IN LINEAR FEET OF 4" LINES TO MATCH THE 4" TEMPORARY TAPE PAY ITEM AND REPRESENTS THE TOTAL QUANTITY OF 4" TAPE REQUIRED.



QUANTITY

4 (100) LINE = 225.9 ft. (68.9 m)
75.3 sq. ft. (6.99 sq. m)

All dimensions are in inches (millimeters) unless otherwise shown.

MODEL: Default
FILE: N:\mfc_p\pub\barcom\dat\links\goc\p\WIDOT\Documents\DOT_Offices\Director_1\Projects\147120\CADD\Drawings\Design\DRS\4.dgn

USER NAME = dumachia	DESIGNED -	REVISED - T. RAMMACHER 03-02-98
PLOT SCALE = 100.0000 ' / in.	DRAWN -	REVISED - E. GOMEZ 08-28-00
PLOT DATE = 10/20/2020	CHECKED -	REVISED - E. GOMEZ 08-28-00
	DATE - 09-18-94	REVISED - A. SCHUETZE 09-15-16

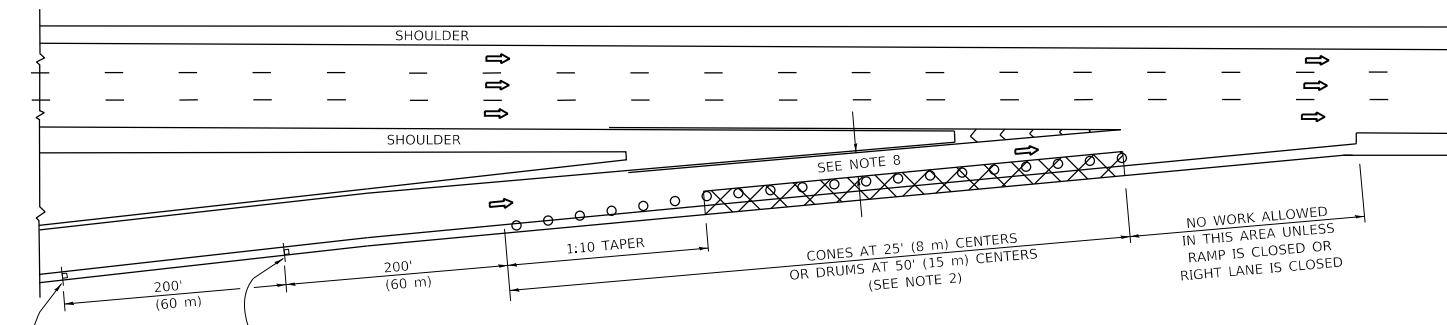
**STATE OF ILLINOIS
DEPARTMENT OF TRANSPORTATION**

SHORT TERM PAVEMENT MARKING LETTERS AND SYMBOLS

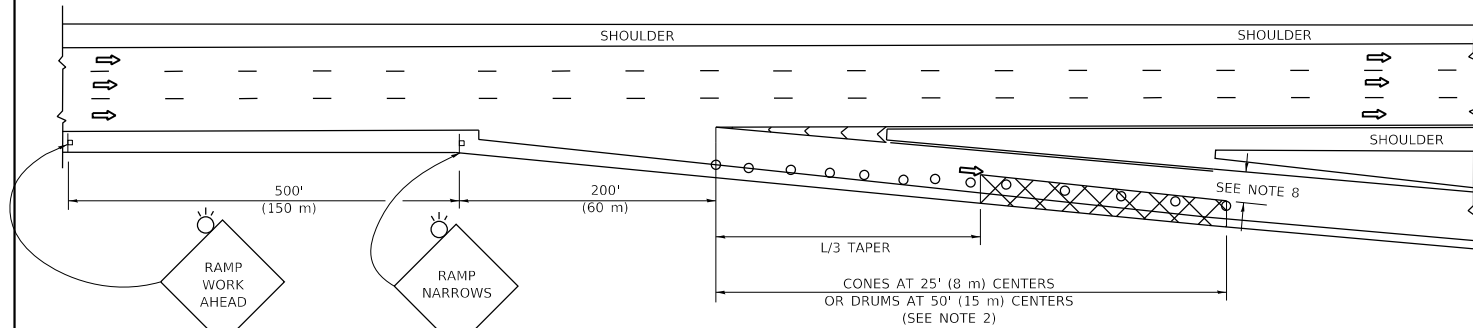
SCALE: NONE SHEET 1 OF 1 SHEETS STA. TO STA.

F.A.P. RTE.	SECTION	COUNTY	TOTAL SHEETS	SHEET NO.
344	2020-072-PP&SW	COOK	18	15
TC-16		CONTRACT NO. 62L50		
ILLINOIS FED. AID PROJECT				

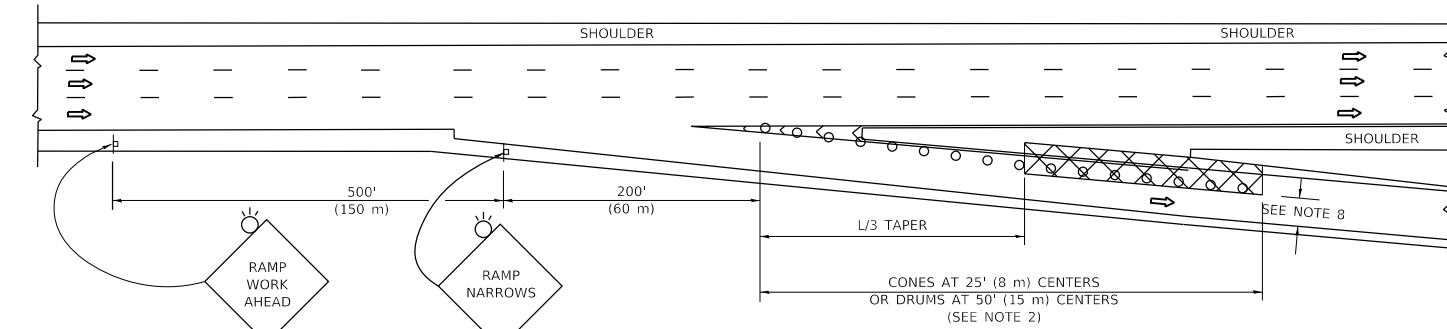
PARTIAL RAMP CLOSURE DETAILS



TYPICAL ENTRANCE RAMP



TYPICAL EXIT RAMP



TYPICAL EXIT RAMP

SYMBOLS

- ACTIVE WORK AREA
- SIGN ON PORTABLE OR PERMANENT SUPPORT
- FLAGGER WITH CONTROL SIGN
- TYPE II BARRICADE OR DRUM
- CONE, DRUM OR BARRICADE
- IMPACT ATTENUATOR OF TYPE AND TEST LEVEL SPECIFIED

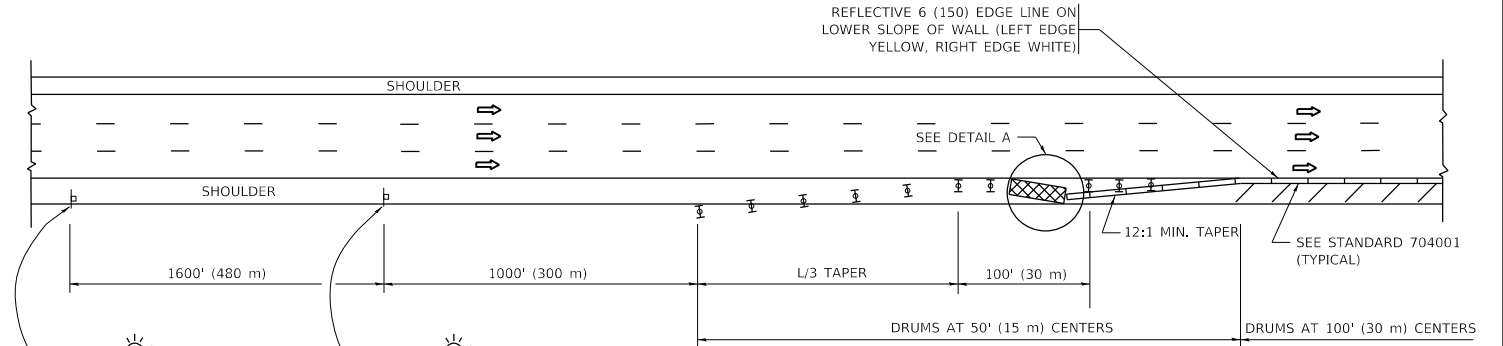
GENERAL NOTES:

1. THE "L" DISTANCE EQUALS:

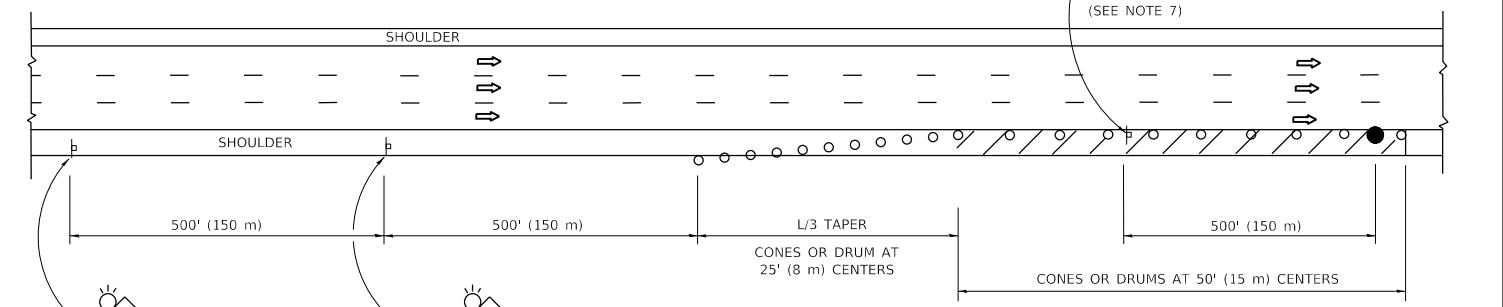
$L = \frac{S^2}{250}$	$L = \frac{S^2}{3.7}$
$L = \frac{S^2}{250}$	$L = \frac{S^2}{3.7}$

45 mph (80 km/h) METRIC ENGLISH
OR GREATER: L=0.65(W/S) L=(W/S)
W = WIDTH OF OFFSET IN FEET (METERS)
S = NORMAL POSTED SPEED MPH (KM/H)
2. TYPE II BARRICADES OR DRUMS ARE REQUIRED FOR ALL NIGHTTIME CLOSURES. TYPE II BARRICADES OR DRUMS WITH MONODIRECTIONAL STEADY BURN LIGHTS ARE REQUIRED FOR DELINEATING OBSTACLES, EXCAVATIONS, OR HAZARDS EXCEEDING 100 FT (30m) IN LENGTH AT NIGHT.
3. ALL SIGNS SHALL BE POST MOUNTED IF THE CLOSURE TIME EXCEEDS FOUR DAYS.
4. FLASHING LIGHTS SHALL BE USED DURING THE HOURS OF DARKNESS AND SHALL BE INSTALLED ABOVE THE FIRST TWO SETS OF SIGNS.

SHOULDER CLOSURE DETAILS



PERMANENT SHOULDER CLOSURE



TEMPORARY SHOULDER CLOSURE

THIS DETAIL IS USED WHERE:
1. VEHICLES, EQUIPMENT, WORKERS OR THEIR ACTIVITIES ENCR OACH IN AN AREA CLOSER THAN 15' (4.5 m) TO THE EDGE OF PAVEMENT FOR A PERIOD IN EXCESS OF 15 MINUTES.



**DETAIL "A"
IMPACT ATTENUATOR, TEMPORARY
(SEE NOTE 5)**

5. THE IMPACT ATTENUATOR, TEMPORARY IS NOT REQUIRED WHEN THE TEMPORARY CONCRETE BARRIER WALL IS PROTECTED BY OR IS TIED INTO THE EXISTING GUARDRAIL. IF OFFSET IS LESS THAN 5 FEET USE NARROW USE TYPE DEVICE TO MEET NCHRP350/MASH.
6. AUTHORIZATION FROM THE DISTRICT'S BUREAU OF TRAFFIC IS REQUIRED FOR ALL FREEWAY CLOSURES.
7. THE FLAGGER AND FLAGGER SIGN ARE REQUIRED AT THE ABOVE WORK SITES WHEN:
 - a. FOUR OR MORE WORK VEHICLES ENTER THE TRAFFIC LANES IN A ONE HOUR PERIOD.
 - b. THE WORK AVTIVITY REQUIRES FREQUENT ENCR OACHMENT INTO THE LANE OPEN TO TRAFFIC.
THE FLAGGER SHALL BE STATIONED APPROXIMATELY 100' (30 m) TO 200' (60 m) IN ADVANCE OF THE WORKERS.

8. 12' MIN. WIDTH TANGENT SECTION
16' MIN. WIDTH CURVE SECTION.
9. TEMPORARY SHOULDER AND NON-SYSTEM INTERCHANGE PARTIAL RAMP CLOSURES ARE ALLOWED WEEKDAYS BETWEEN 9:00 A.M. AND 3:00 P.M. AND BETWEEN 7:00 P.M. AND 5:00 A.M. OR AS APPROVED BY THE EXPRESSWAY TRAFFIC OPERATIONS ENGINEER. PERMANENT SHOULDER AND PARTIAL RAMP CLOSURES WILL ONLY BE PERMITTED IF CALLED FOR IN THE PLANS OR AS APPROVED BY THE EXPRESSWAY OPERATIONS ENGINEER.

ALL DIMENSIONS ARE IN INCHES (MILLIMETERS) UNLESS OTHERWISE SHOWN.

MODEL: Default
FILE: \\nchrp350\pww\dot\Documents\DOT - Offices\Illinois\1\Projects\147120\Cadd\Drawings\Design\DCS\4.dgn

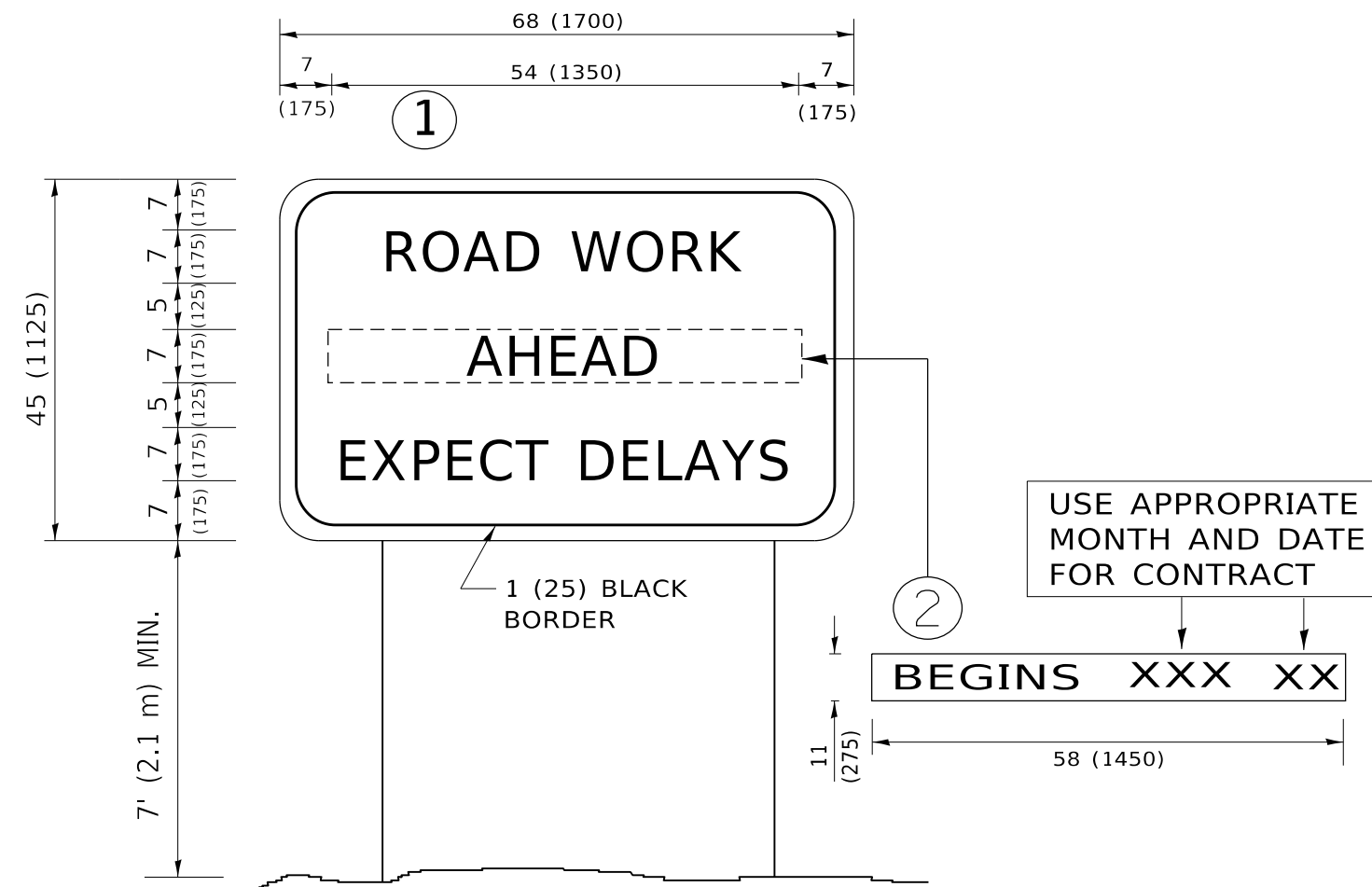
USER NAME = dumachia	DESIGNED -	REVISED - S.P.B. 12-09
	DRAWN - D.W.S.	REVISED - M.D. 06-13
PLOT SCALE = 100.0000' / in.	CHECKED -	REVISED - M.D. 01-18
PLOT DATE = 10/20/2020	DATE - 11-96	REVISED - M.D. 10-20

**STATE OF ILLINOIS
DEPARTMENT OF TRANSPORTATION**

**TRAFFIC CONTROL DETAILS FOR FREEWAY
SHOULDER CLOSURES AND PARTIAL RAMP CLOSURES**

SCALE: NONE SHEET 1 OF 1 SHEETS STA. TO STA.

F.A.P. RTE.	SECTION	COUNTY	TOTAL SHEETS	SHEET NO.
344	2020-072-PP&SW	COOK	18	16
TC-17		CONTRACT NO. 62150		
ILLINOIS FED. AID PROJECT				



NOTES:

1. USE BLACK LETTERING ON ORANGE BACKGROUND.
2. ERECT SIGNS IN ADVANCE OF THE LOCATION FOR THE "ROAD CONSTRUCTION AHEAD" SIGN AT LOCATIONS AS DIRECTED BY THE ENGINEER.
3. ERECT SIGN ① WITH INSTALLED PANEL ② ONE WEEK PRIOR TO THE START OF CONSTRUCTION.
4. REMOVE PANEL ② SOON AFTER THE START OF CONSTRUCTION.
5. SEE SPECIAL PROVISION FOR "TEMPORARY INFORMATION SIGNING" FOR ADDITIONAL INFORMATION.
6. ONE SIGN ASSEMBLY EQUALS 25.70 SQ. FT. (2.3 SQ. M.)
7. SHALL BE PAID FOR AS TEMPORARY INFORMATION SIGNING.

ALL DIMENSIONS ARE IN INCHES (MILLIMETERS) UNLESS OTHERWISE SHOWN.

MODEL: Default
 FILE: \\nas01c.psu.edu\pub\lanroom\data\illinois.gov\PWIDOT\Documents\DOT_Offices\District_1\Projects\147120\CADD\Design\Design\DES.dgn

USER NAME = dumachia	DESIGNED -	REVISED - R. MIRS 09-15-97
	DRAWN -	REVISED - R. MIRS 12-11-97
PLOT SCALE = 100.0000 ' / in.	CHECKED -	REVISED - T. RAMMACHER 02-02-99
PLOT DATE = 10/20/2020	DATE -	REVISED - C. JUCIUS 01-31-07

**STATE OF ILLINOIS
DEPARTMENT OF TRANSPORTATION**

**ARTERIAL ROAD
INFORMATION SIGN**

SCALE: NONE SHEET 1 OF 1 SHEETS STA. TO STA.

F.A.P. RTE.	SECTION	COUNTY	TOTAL SHEETS	SHEET NO.
344	2020-072-PP&SW	COOK	18	17
TC-22			CONTRACT NO. 62L50	
ILLINOIS FED. AID PROJECT				

