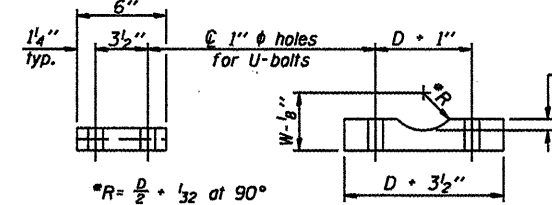


Alternate detail if welding col. to base plate first, then snip inside corner of ribs. Terminate weld on rib 1/4" from snip.

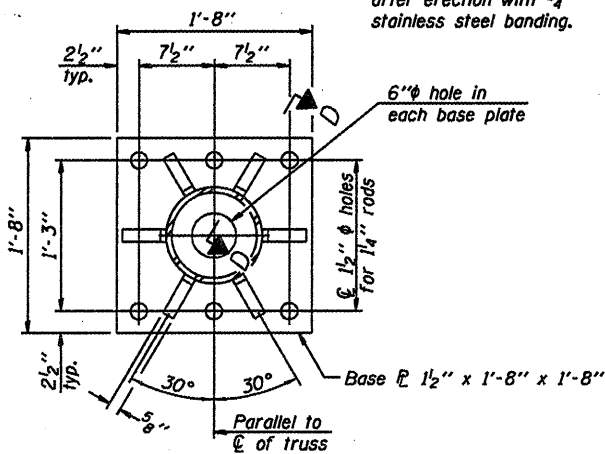
SECTION D-D



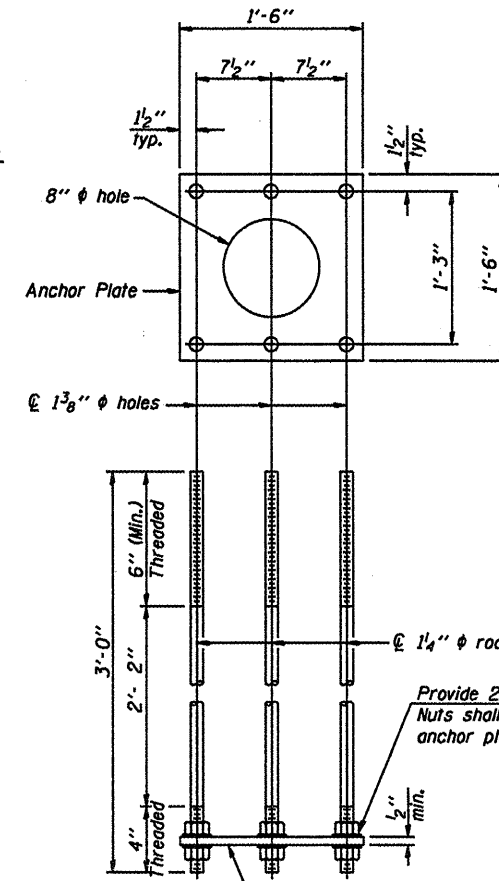
D = Outside Diameter of Chord.
For W. see Base Sheet OS-A-6.

SADDLE SHIM DETAIL
ASTM B26 Alloy 356-F
or
ASTM B209 Alloy 6061-T651
(4 required per sign truss)

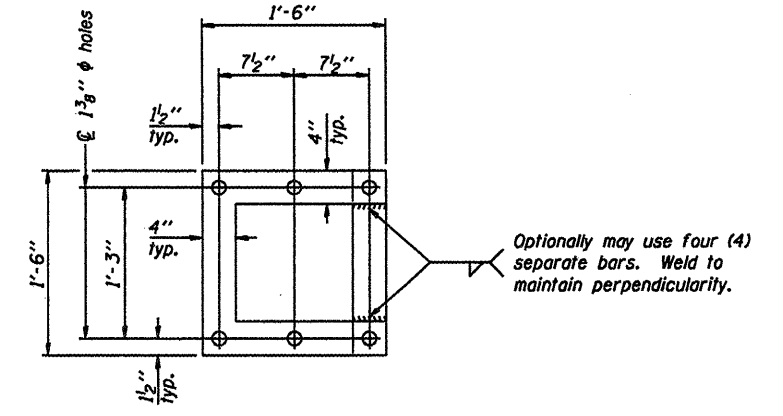
Truss Chord Nominal Dia.	a
5"	3/4"
5 1/2"	1 1/8"
6"	7/8"
6 1/2"	1 1/16"
7"	1"



SECTION B-B

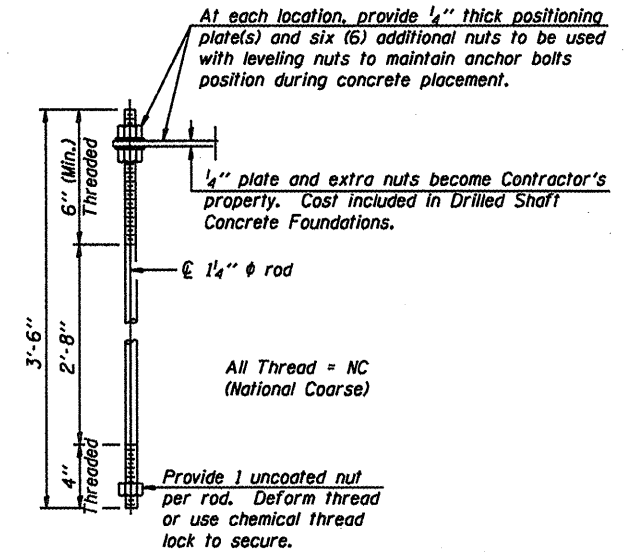


ANCHOR ROD DETAIL
Spread Footing Foundation



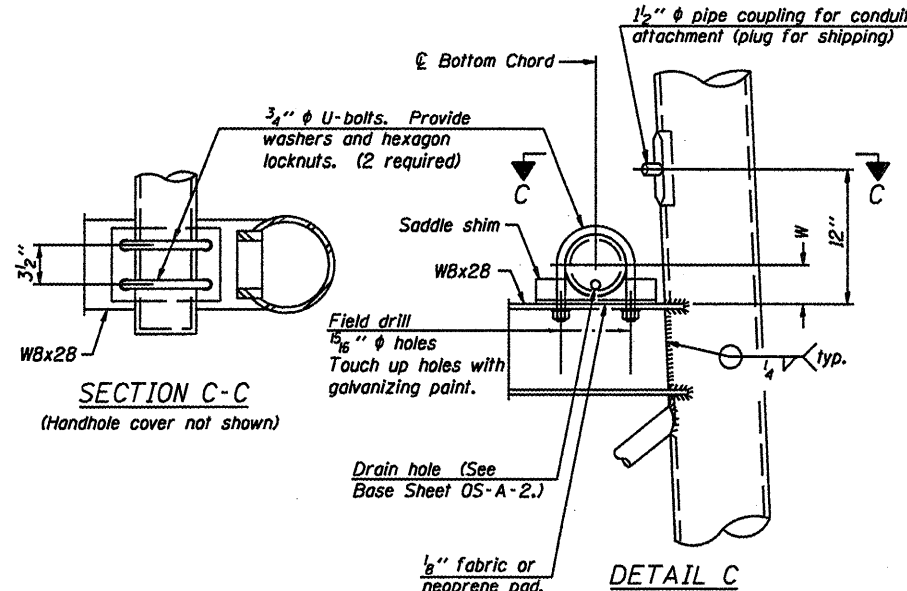
POSITIONING PLATE(S)

Optionally may use four (4) separate bars. Weld to maintain perpendicularity.



ANCHOR ROD DETAIL
Drilled Shaft Foundation

Anchor rods shall conform to AASHTO M314 Grade 36 or 50 and meet Charpy V-Notch (CVN) energy of 15 lb.-ft. at 40° F. Galvanize upper 12" per AASHTO M232. No welding shall be permitted on rods.



SECTION C-C
(Handhole cover not shown)

10" phi PIPE SUPPORT FRAME DETAILS

**OVERHEAD SIGN STRUCTURES
SUPPORT FRAME DETAILS ALUMINUM TRUSS**

District 5
Overhead Sign Structure
Replacement

NUMBER	REVISION	DATE

DESIGNED -	20
CHECKED -	EXAMINED
DRAWN -	PASSED
CHECKED -	ENGINEER OF BRIDGES AND STRUCTURES