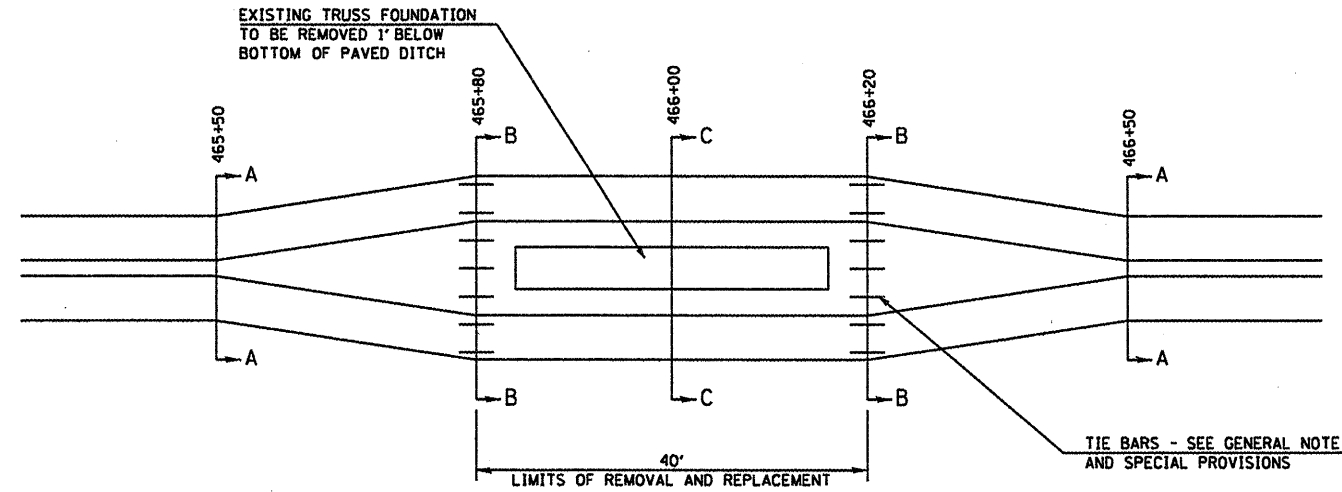
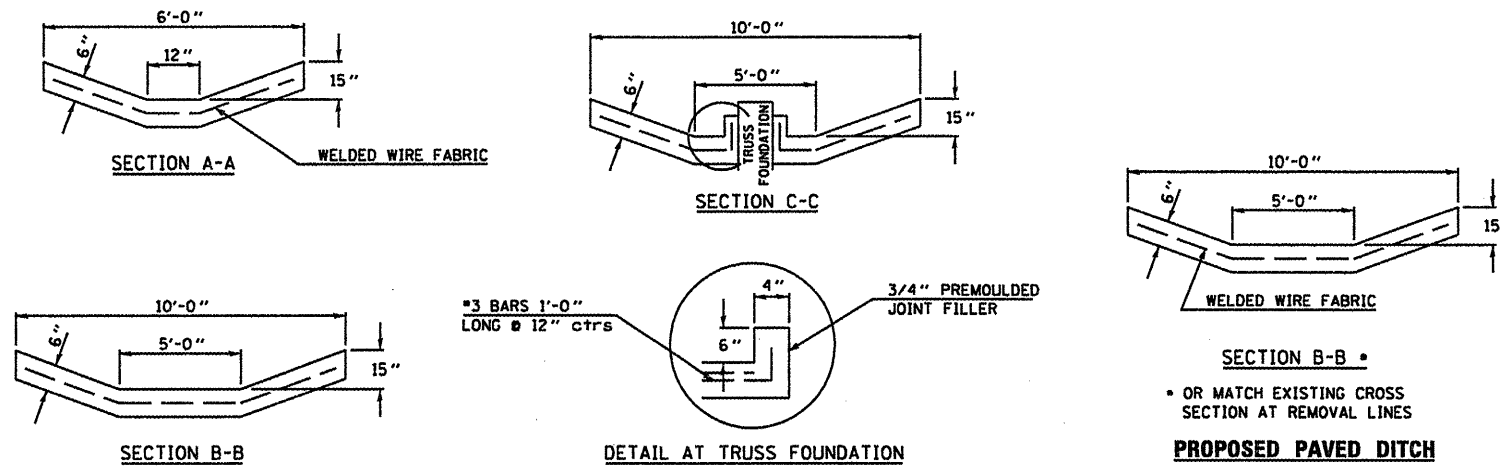


PAVED DITCH REMOVAL & REPLACEMENT

SIGN TRUSS LOCATION 5 S 010 1057 R235.32



PLAN VIEW



EXISTING PAVED DITCH - REMOVAL INFORMATION

General Notes

1. See also Special Provision for Paved Ditch Removal and Replacement
2. Removal of existing paved ditch shall be in accordance with Section 440.
3. Broken concrete shall be disposed of according to Art. 202.03
4. New paved ditch shall be built in accordance with Section 606.
5. Fourteen (14) 18" #4 epoxy coated tie bars are required. Seven (7) at each construction joint on 18" centers. Holes are to be drilled 9" deep and cleaned out with compressed air. Epoxy shall conform to Section 1027.
6. Welded wire fabric shall be 6"x6" mesh, #4 gage, 58lbs/100sqft.
7. Backfilling, final grading, seeding, fertilizer, and mulch are included in the unit cost for Paved Ditch Removal and Replacement with no additional compensation allowed.
8. The above referenced work will be paid at the contract unit price per lineal foot for Paved Ditch Removal and Replacement.

FILE NAME	USER NAME	DESIGNED	REVISIONS	STATE OF ILLINOIS DEPARTMENT OF TRANSPORTATION	SCALE: _____ SHEET NO. _____ OF _____ SHEETS STA. _____ TO STA. _____	F.A. RTE.	SECTION	COUNTY	TOTAL SHEET NO.
WFLEL#		DRAWN	REVISIONS			CONTRACT NO.			
PLAT SCALE	RESCALE#	CHECKED	REVISIONS			FED. ROAD DIST. NO.	ILLINOIS FED. AID PROJECT		
PLAT DATE	MONTE#	DATE	REVISIONS						

DESIGNED	-	20
CHECKED	-	EXAMINED
DRAWN	-	PASSED
CHECKED	-	ENGINEER OF BRIDGE DESIGN
		ENGINEER OF BRIDGES AND STRUCTURES