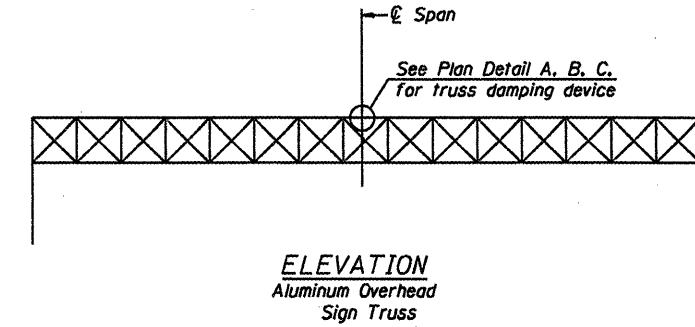
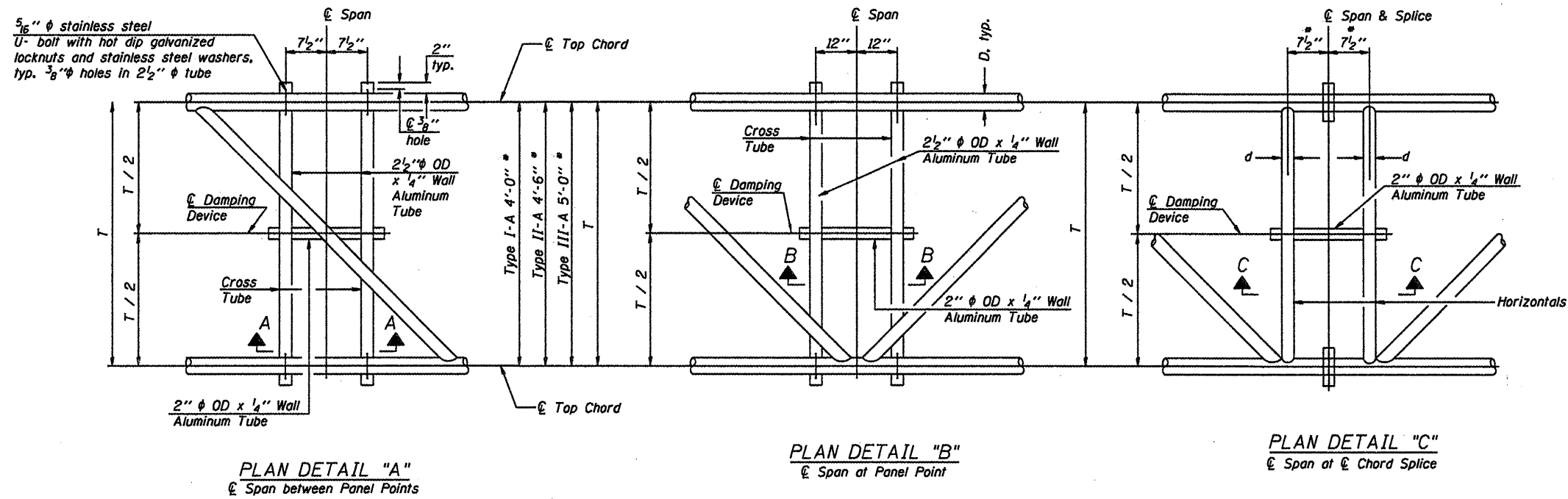
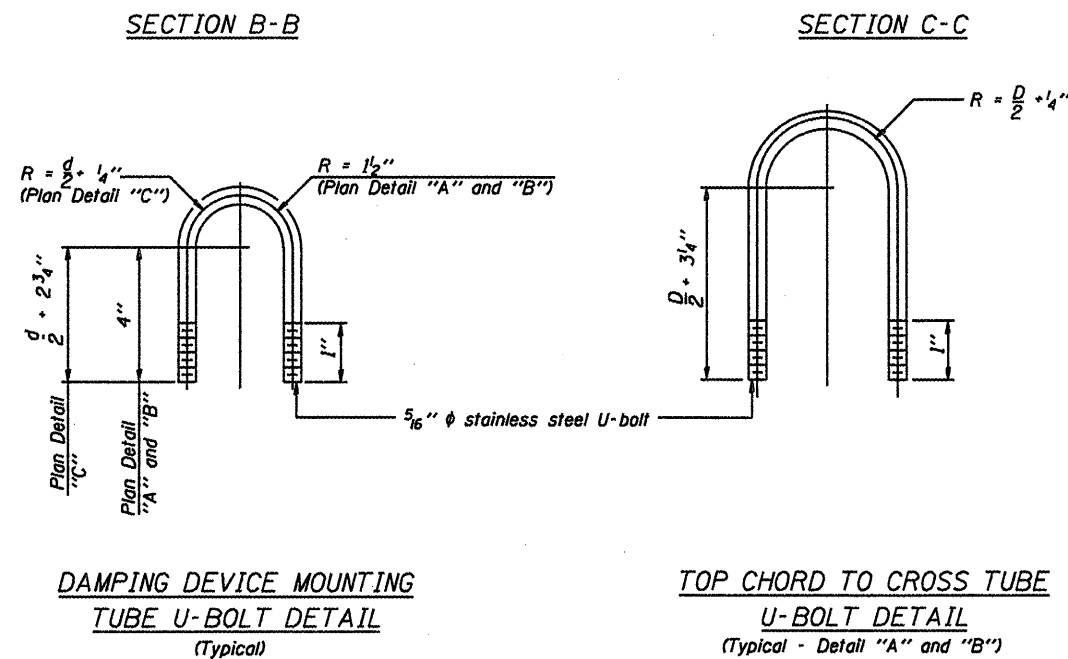
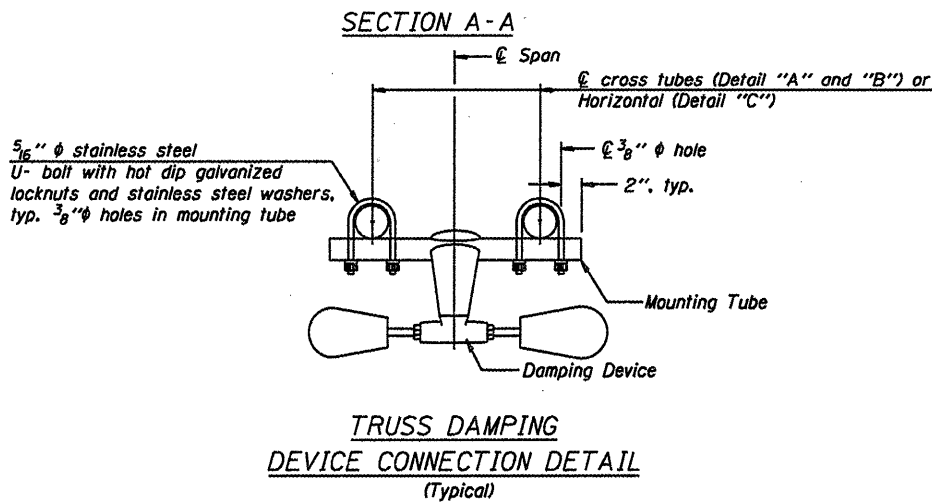
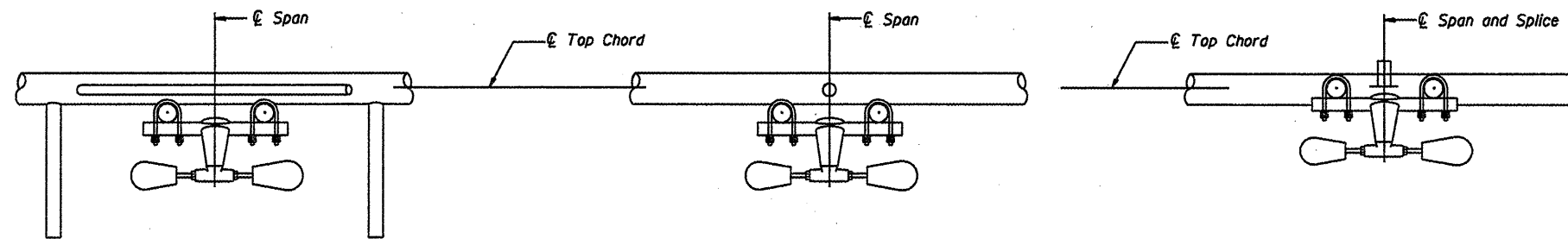


\* Center of horizontal to center of splice dimension may vary. Verify before drilling holes in mounting tube.



**NOTES**  
Damper: One damper per truss.  
(31 lbs. Stockbridge-Type Aluminum)  
Cost included in Overhead Sign Structure...  
Materials: Aluminum tubes shall be ASTM B221 alloy 6061 temper T6. Cost included in Overhead Sign Structure...

This detail applies to the following overhead sign structure:  
750151057L189.9



OVERHEAD SIGN STRUCTURE  
DAMPING DEVICE

---

District 7  
Overhead Sign Structure  
Replacement

DESIGNED -	20
CHECKED -	EXAMINED
DRAWN -	PASSED
CHECKED -	ENGINEER OF BRIDGE DESIGN
	ENGINEER OF BRIDGES AND STRUCTURES

OS-A-D 5/16/08