

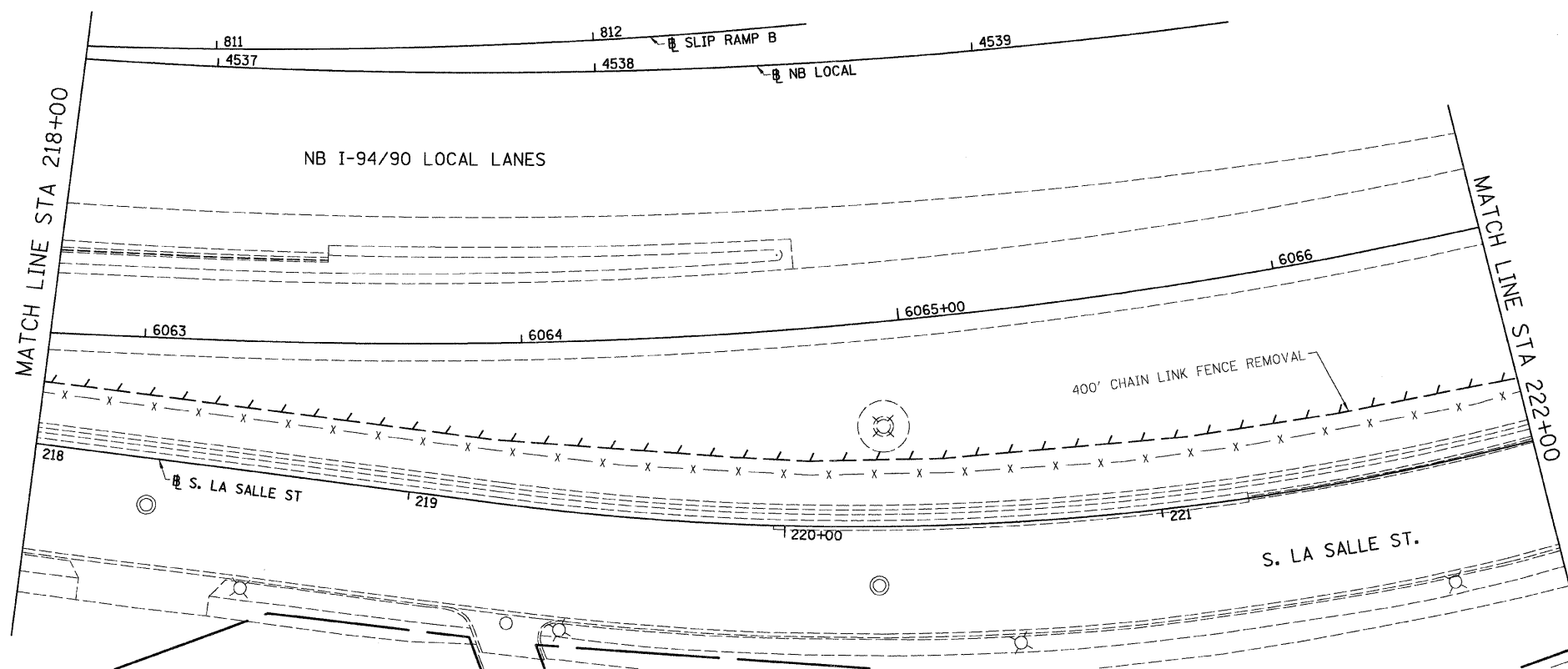
F.A.I.	SECTION	COUNTY	TOTAL SHEETS	SHEET NO.
94/90	2005-0331	COOK	37	10
STA.	TO STA.			
FED. ROAD DIST. NO.	ILLINOIS	FED. AID PROJECT		

60A04

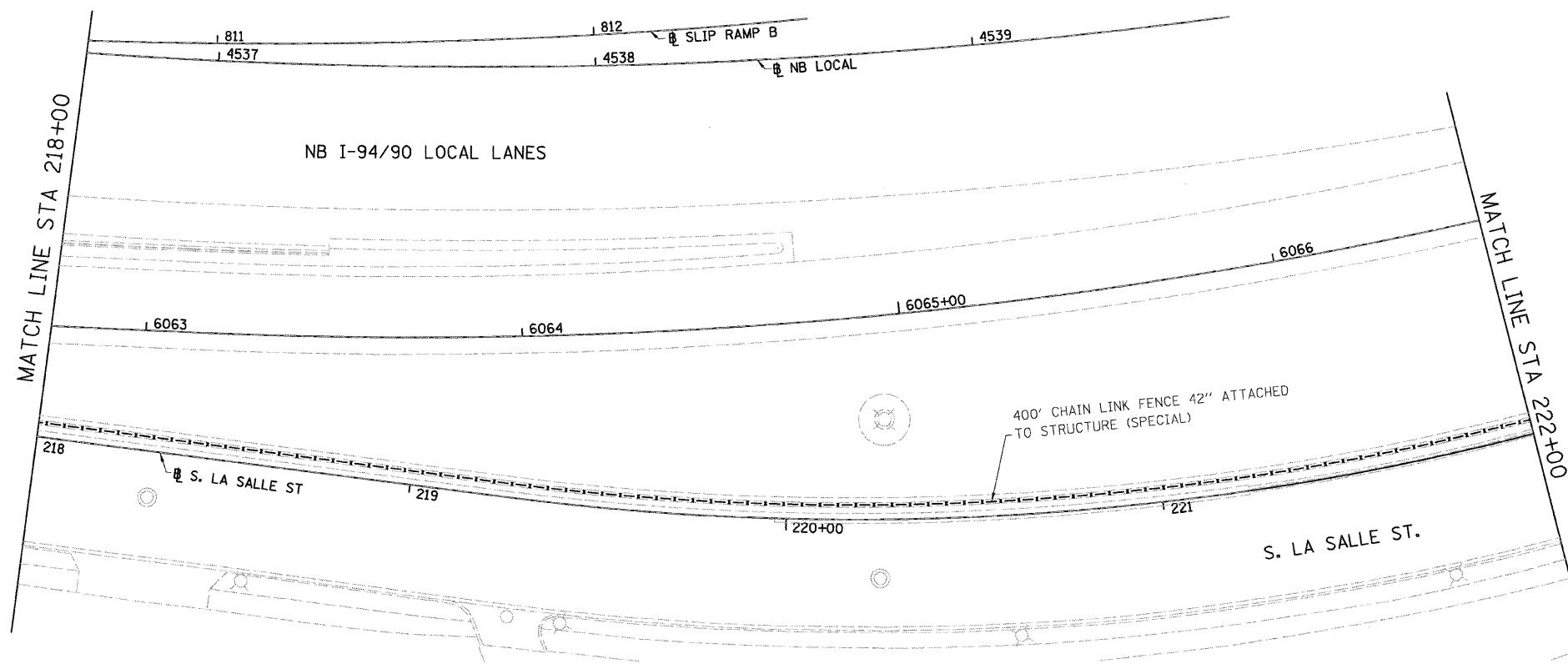


LEGEND:

--- LINEAR REMOVALS

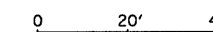


EXISTING CONDITIONS AND REMOVAL
PROPOSED IMPROVEMENTS



NOTES:

1. SEE DETAIL FOR CHAIN LINK FENCE, 42" ATTACHED TO STRUCTURE (SPECIAL).



PL-2

REVISIONS	
NAME	DATE

ILLINOIS DEPARTMENT OF TRANSPORTATION
F.A.I. 94/90 (DAN RYAN EXPRESSWAY)
NORTHBOUND FENCE AND GATES (47TH ST TO 31ST ST)

EXISTING AND PROPOSED
FENCE PLANS

SCALE: 1"=20'
DATE: 10/23/08

DRAWN BY: JDC
CHECKED BY: DDM

BOWMAN, BARRETT & ASSOCIATES INC.
CONSULTING ENGINEERS
Chicago, Illinois
312.228.0100
www.bbainc.com



10/24/2008 12:28:46 PM