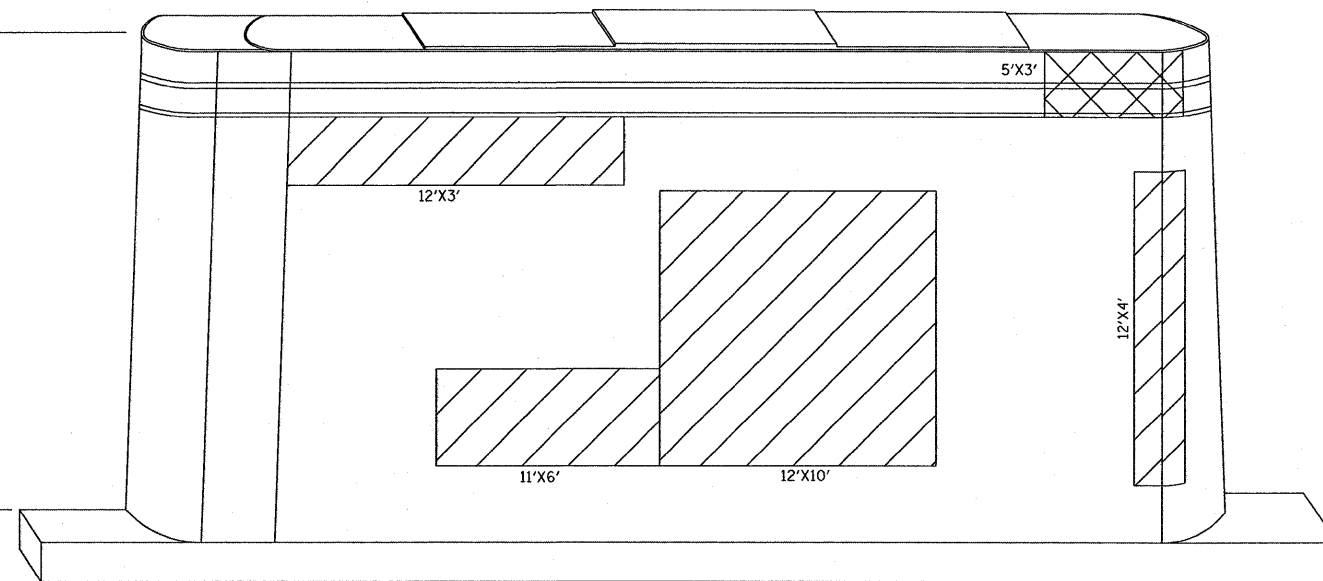
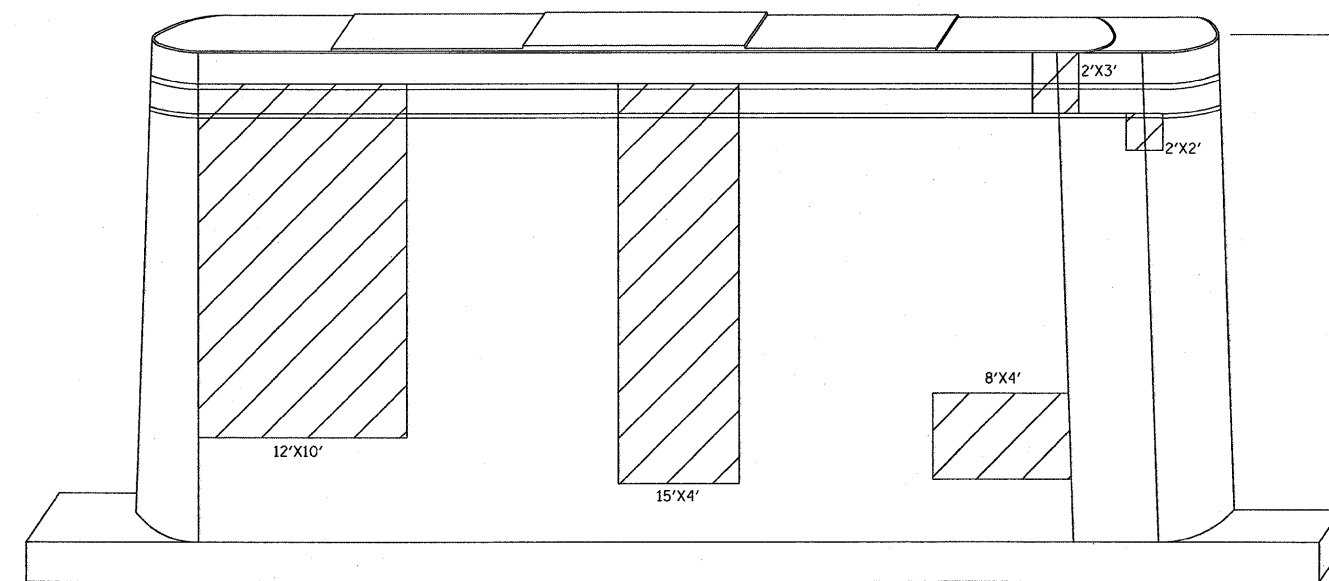


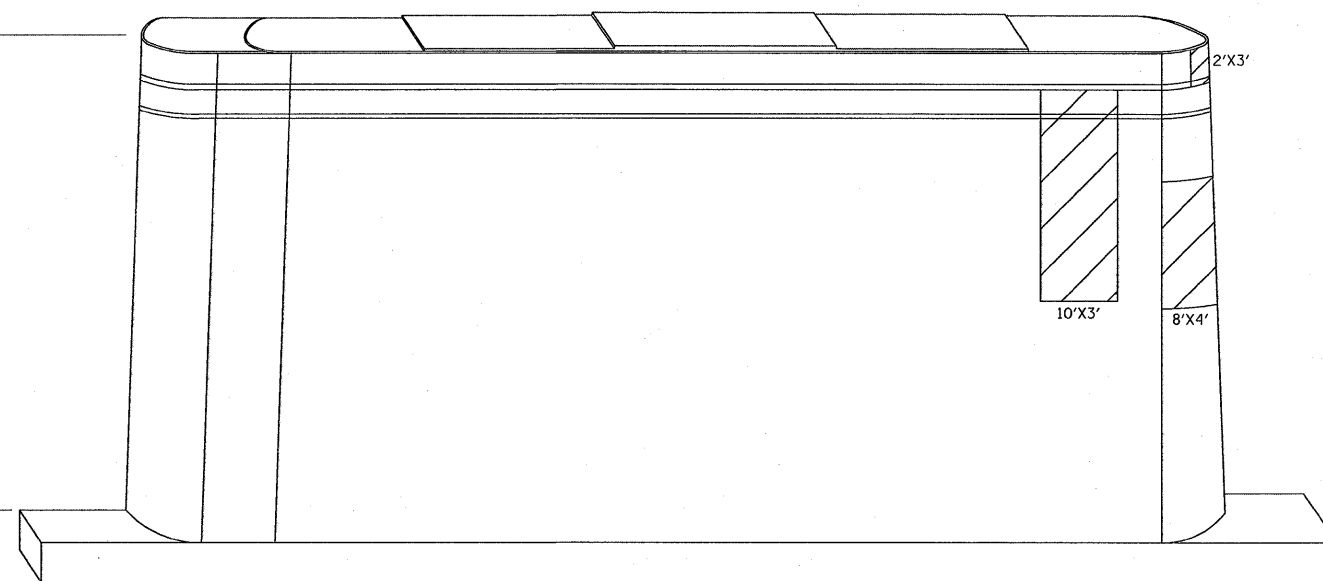
PIER 3
EAST FACE
LOOKING WEST



PIER 3
WEST FACE
LOOKING EAST



PIER 4
EAST FACE
LOOKING WEST



PIER 4
WEST FACE
LOOKING EAST

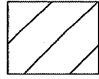
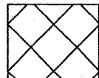
BEAM
REACTIONS
TABLE

| | |
|----------|--------|
| D.L. | 34.9 K |
| L.L.+IMP | 45.3 K |
| TOTAL | 80.2 K |

PIER 3
SPAN 3 & 4

| PIER 3 & 4 BILL OF MATERIAL | UNIT | QUANTITY |
|------------------------------------|-------|----------|
| STRUCTURAL REPAIR OF CONCRETE ≤ 5" | SQ FT | 752 |
| STRUCTURAL REPAIR OF CONCRETE > 5" | SQ FT | 51 |
| TEMPORARY SHORING AND CRIBBING | EA | 2 |

| SN 099-0041 TOTAL BILL OF MATERIAL | UNIT | QUANTITY |
|------------------------------------|-------|----------|
| STRUCTURAL REPAIR OF CONCRETE ≤ 5" | SQ FT | 1564 |
| STRUCTURAL REPAIR OF CONCRETE > 5" | SQ FT | 51 |
| TEMPORARY SHORING AND CRIBBING | EA | 2 |

-  STRUCTURAL REPAIR OF CONCRETE ≤ 5"
-  STRUCTURAL REPAIR OF CONCRETE > 5"
- * TEMPORARY SHORING AND CRIBBING

FILE NAME =
c:\projects\dl20287\design\ea.dgn

USER NAME = mdyjs
PLOT SCALE = 57.6240" / IN.
PLOT DATE = 10/30/2008

DESIGNED -
DRAWN -
CHECKED -
DATE -

REVISED -
REVISED -
REVISED -
REVISED -

STATE OF ILLINOIS
DEPARTMENT OF TRANSPORTATION

SN 099-0041
PIER 3 & 4 STRUCTURAL REPAIR SHEET 2 of 2
SCALE: SHEET NO. OF SHEETS STA. TO STA.

| | | | | |
|---|-----------------------|----------------|--------------------|-----------------|
| F.A.I. RTE. 80 | SECTION 99-1-B-I-2 | COUNTY WILL | TOTAL SHEETS 21 | SHEET NO. 17 |
| CONTRACT NO. 60D66 | | | | |
| FED. ROAD DIST. NO. 1 ILLINOIS FED. AID PROJECT | | | | |