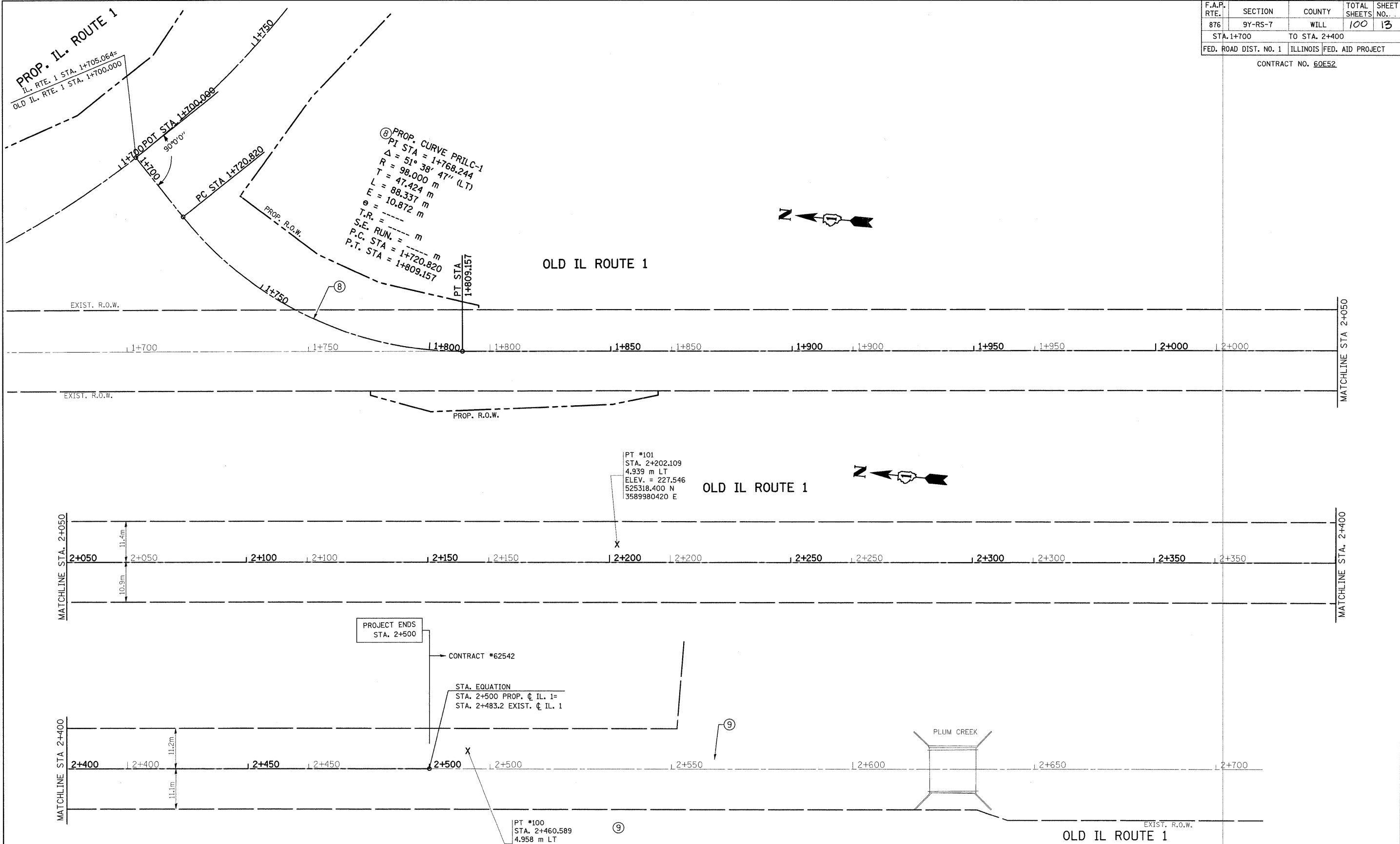


\*REF-d1n7  
 \*REF-d1n8  
 \*REF-d1n9

F.A.P. RTE.	SECTION	COUNTY	TOTAL SHEETS	SHEET NO.
876	9Y-RS-7	WILL	100	13
STA. 1+700		TO STA. 2+400		
FED. ROAD DIST. NO. 1 ILLINOIS FED. AID PROJECT				

CONTRACT NO. 60E52



REVISIONS	
NAME	DATE

ILLINOIS DEPARTMENT OF TRANSPORTATION

**IL. ROUTE 1  
 EXISTING & PROPOSED  
 ALIGNMENT & TIE PLAN**

SCALE 1:500  
 DATE 9/3/2008

DRAWN BY  
 CHECKED BY