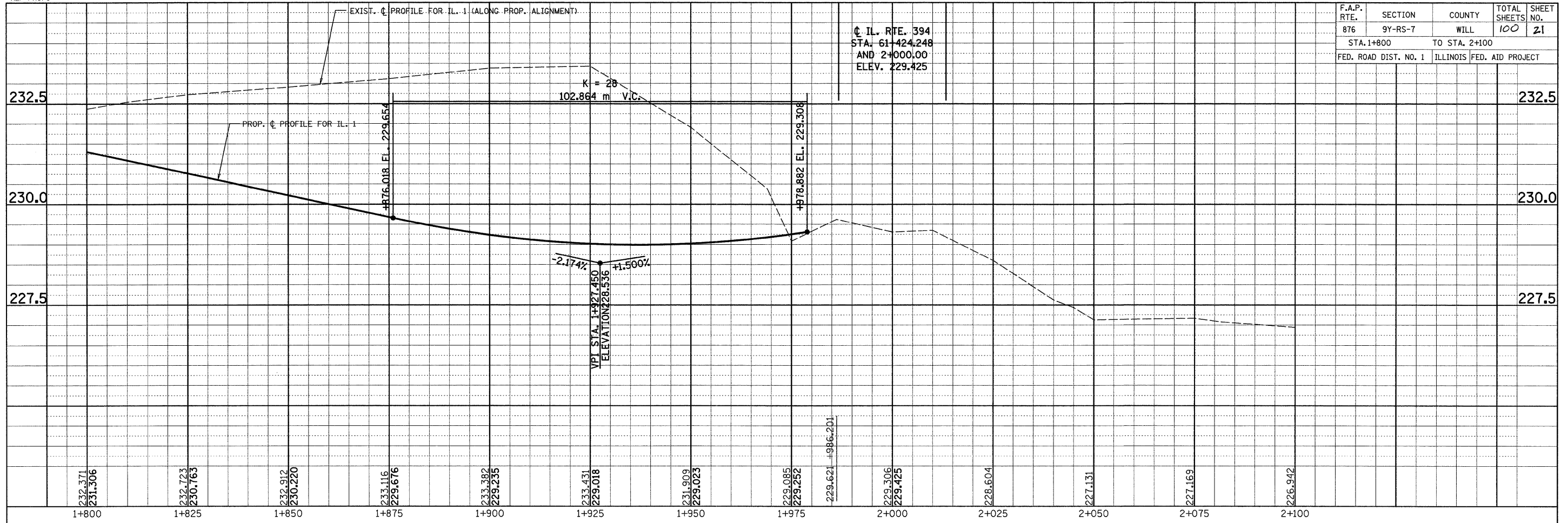


F.A.P. RTE.	SECTION	COUNTY	TOTAL SHEETS	SHEET NO.
876	9Y-RS-7	WILL	100	21
STA. 1+800		TO STA. 2+100		
FED. ROAD DIST. NO. 1		ILLINOIS FED. AID PROJECT		

C IL. RTE. 394
 STA. 61+424.248
 AND 2+000.00
 ELEV. 229.425



**EXISTING AND PROPOSED
 PROFILE FOR IL. ROUTE 1**
 SCALE: VERT. 1:50
 HORIZ. 1:500
 DATE: 9/3/2008
 DRAWN BY:
 CHECKED BY: