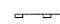





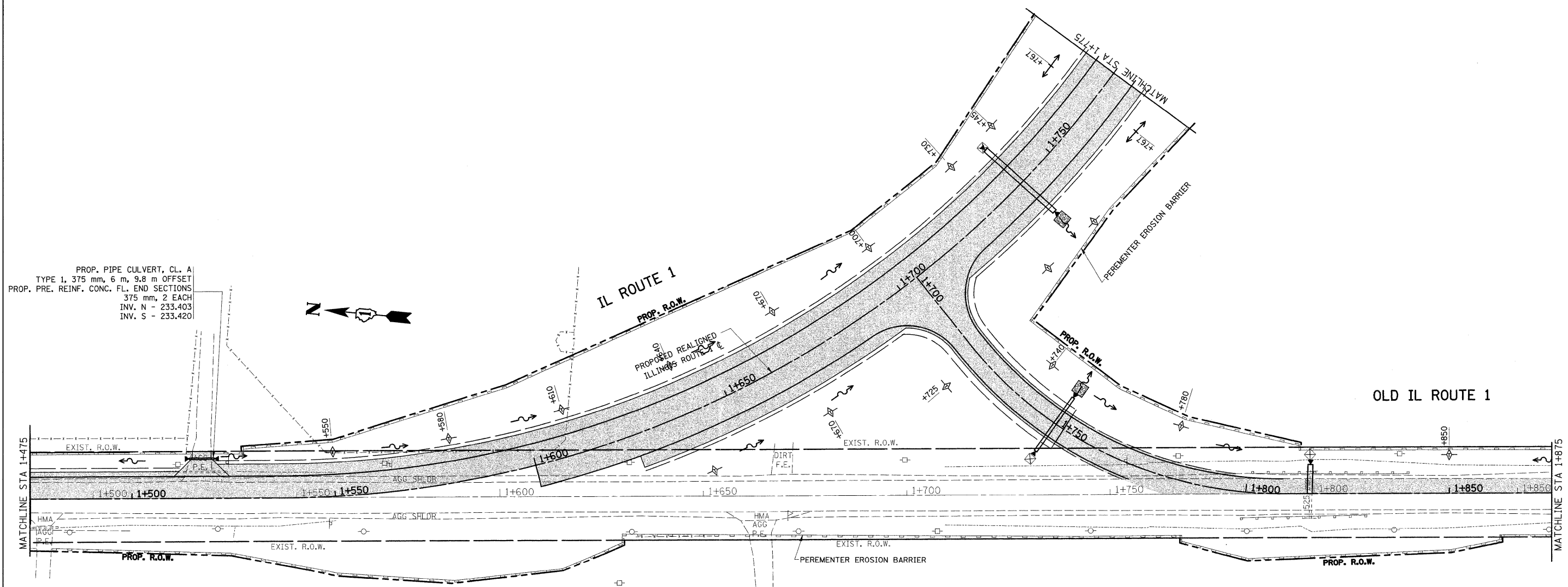
F.A.P. RTE.	SECTION	COUNTY	TOTAL SHEETS	SHEET NO.
876	9Y-RS-7	WILL	100	34
STA. 1+475		TO STA. 1+875		
FED. ROAD DIST. NO. 1		ILLINOIS FED. AID PROJECT		

CONTRACT NO. 60E52

LEGEND

-  PERIMETER EROSION CONTROL
-  TEMPORARY DITCH CHECKS, URETHANE FORM
-  SEDIMENT CONTROL DRAINAGE
STRUCTURE INLET FILTER CLEANING
-  INLET FILTERS

 PAVEMENT TO BE CONSTRUCTED



PROP. PIPE CULVERT, CL. A
 TYPE 1, 375 mm, 6 m, 9.8 m OFFSET
 PROP. PRE. REINF. CONC. FL. END SECTIONS
 375 mm, 2 EACH
 INV. N - 233.403
 INV. S - 233.420

REVISIONS	
NAME	DATE

ILLINOIS DEPARTMENT OF TRANSPORTATION
EROSION CONTROL PLAN
IL. 1
STAGE I

SCALE 1:500
 DATE 9/23/2008

DRAWN BY
 CHECKED BY