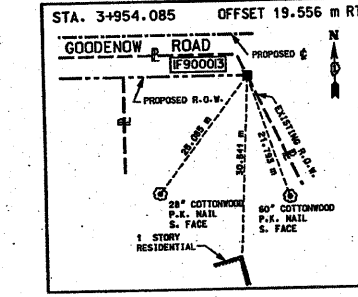
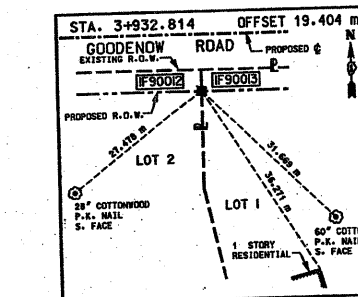
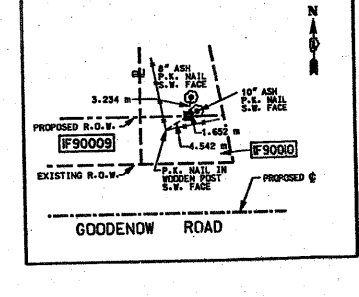
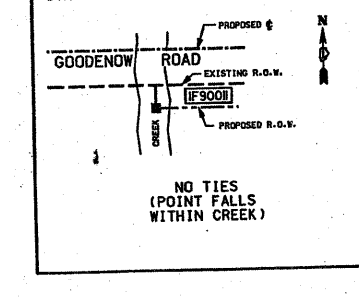
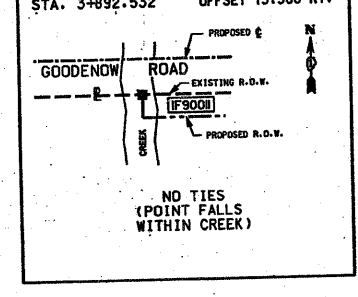
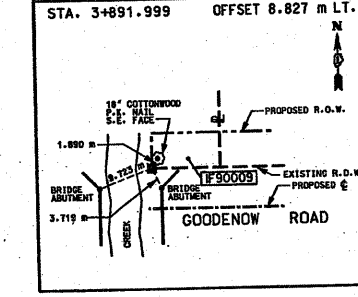
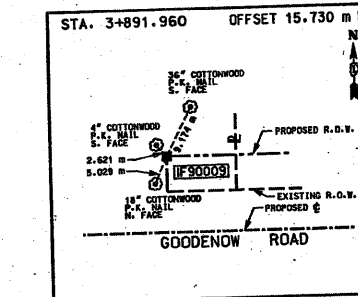
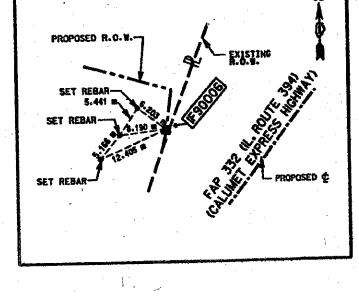
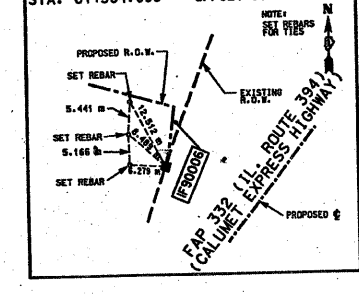
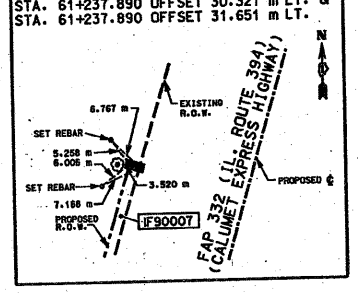
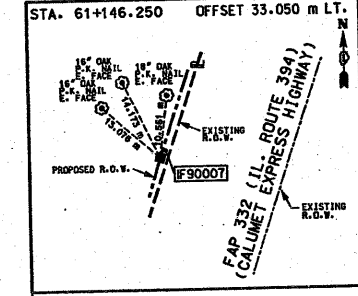
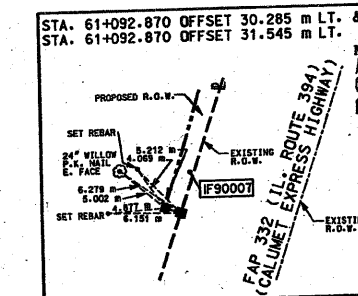
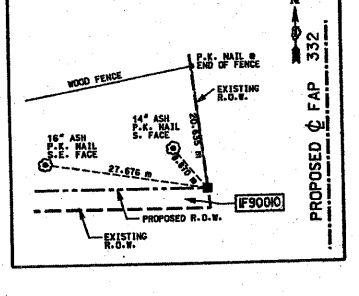
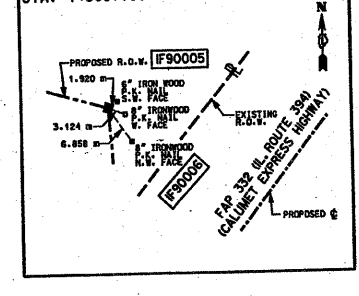
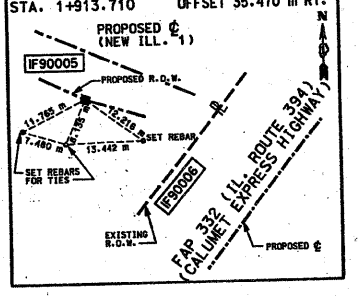
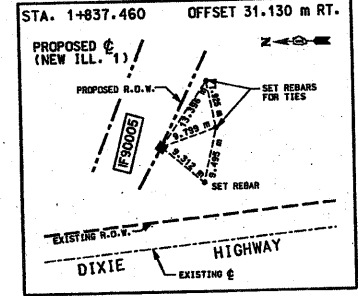
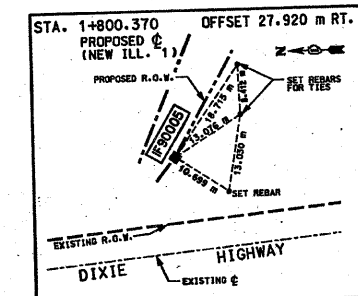
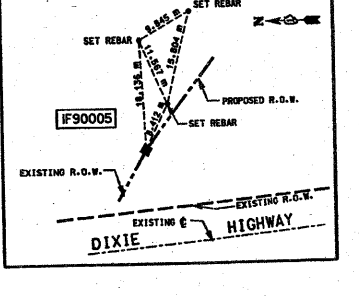
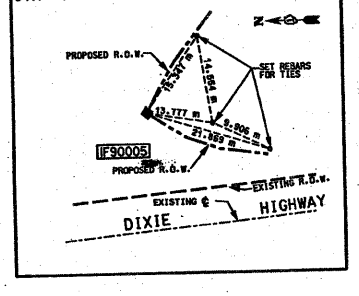
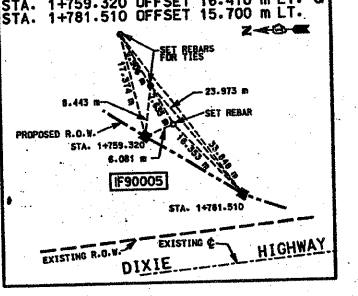
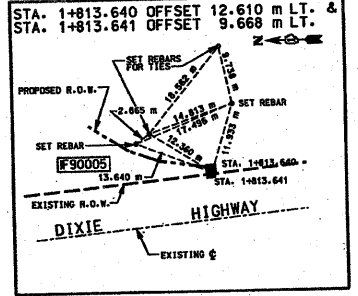
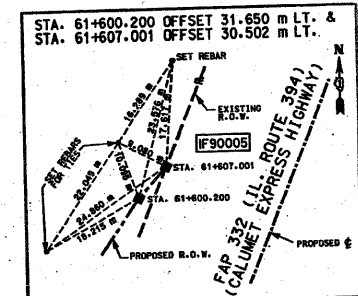


Sheet 59  
of 100

COORDINATE VALUE

DATA POINT NO.	STATION	OFFSET	- N -	COORDINATES	- E -
XXXX	61+600.200	31.650 m L		525846.40	359311.98
XXXX	61+607.001	30.502 m L		525852.23	359315.73
5060	1+813.640	12.610 m L		525706.58	358977.64
5063	1+813.641	9.668 m L		525706.28	358974.70
5059	1+759.320	16.410 m L		525751.95	358987.29
5058	1+781.510	15.700 m L		525734.45	358981.26
5057	1+719.670	26.420 m R		525774.82	359001.22
5056	1+749.810	6.410 m R		525757.89	359029.99
5058	1+800.370	27.920 m R		525723.73	359073.95
5069	1+837.460	31.130 m R		525708.75	359107.92
5070	1+913.710	35.470 m R		525672.26	359176.26
5071	1+963.780	29.420 m R		525658.51	359225.12
5132	60+520.516	17.799 m L		524789.77	359042.19
XXXX	61+092.870	30.285 m L		525363.15	359140.27
XXXX	61+092.870	33.050 m L		525363.44	359139.05
XXXX	61+146.050	30.321 m L		525416.24	359151.02
XXXX	61+237.890	30.321 m L		525504.67	359179.27
XXXX	61+237.890	31.651 m L		525505.17	359177.76
XXXX	61+364.096	30.368 m L		525625.85	359219.99
5073	61+374.830	31.890 m L		525636.59	359222.32
5134	3+891.960	15.730 m L		524786.99	358992.26
5148	3+891.999	8.827 m L		524779.80	358992.42
5036	3+892.532	4.741 m R		524755.44	358993.52
5037	3+892.700	19.660 m R		524751.48	358993.65
5135	3+916.050	16.880 m L		524782.84	359016.32
5157	3+932.814	19.404 m R		524752.81	359033.80
5159	3+954.085	19.556 m R		524753.21	359055.12



FOR INFORMATION ONLY

ENVIRONMENTAL DESIGN INTERNATIONAL INC.  
200 S MICHIGAN AVENUE  
SUITE 700  
CHICAGO, ILLINOIS 60604

ILLINOIS DEPARTMENT OF TRANSPORTATION  
PLAT OF HIGHWAYS  
FAI394 (IL 394)  
SECTION @ IL 1  
WILL COUNTY  
JOB NO. R-91-023-02  
TIE SHEET

NO SCALE SHEET 11 OF 11

DIVISION OF HIGHWAYS/DISTRICT I  
BUREAU OF LAND ACQUISITION  
20 WEST CENTER COURT  
SCHAMBURG, ILLINOIS 60196