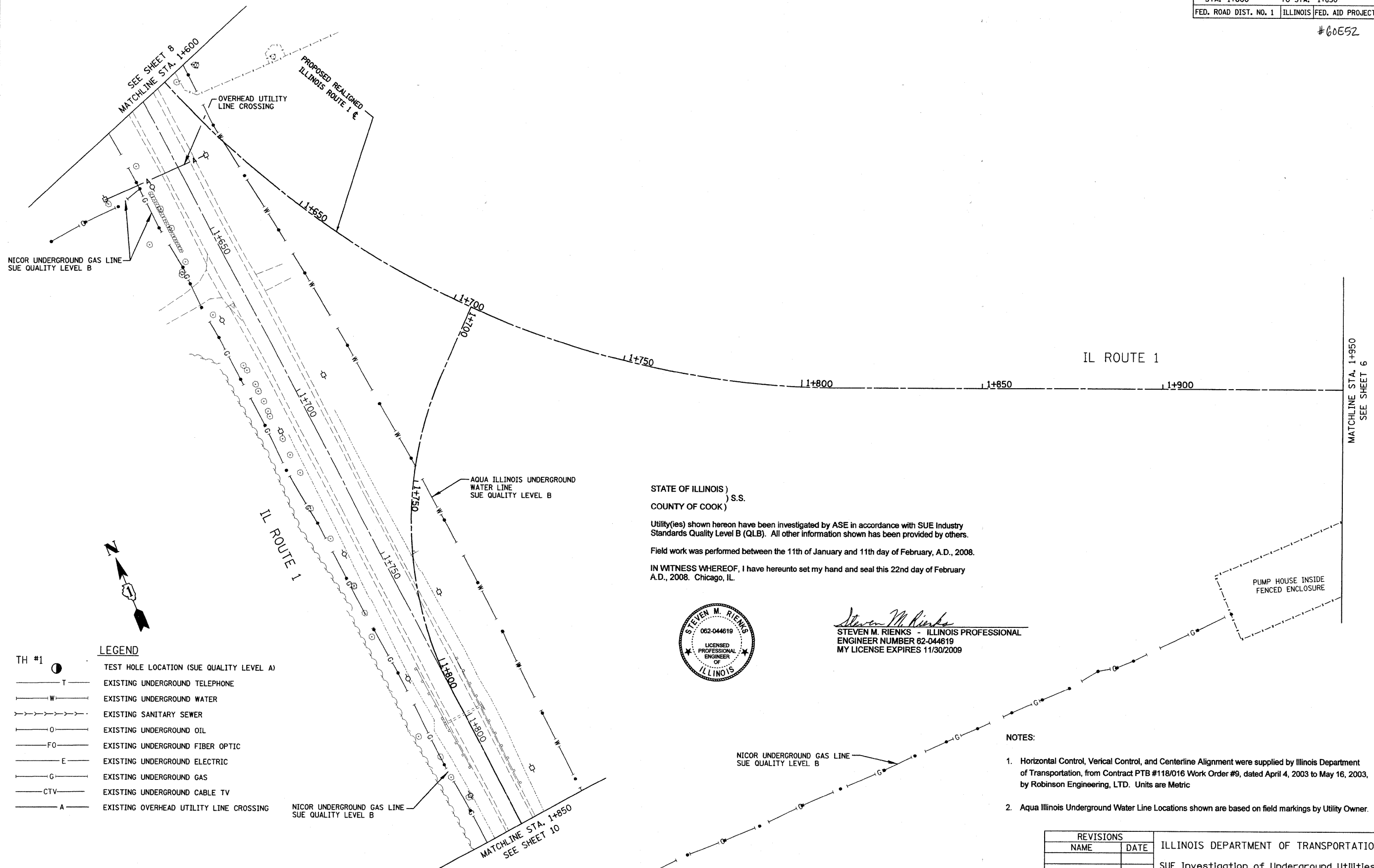


F.A.P. RTE.	SECTION	COUNTY	TOTAL SHEETS	SHEET NO.
874	94-R9-7	WILL	100	62
STA. 1+600		TO STA. 1+850		
FED. ROAD DIST. NO. 1		ILLINOIS FED. AID PROJECT		

#6052



STATE OF ILLINOIS)
COUNTY OF COOK) S.S.

Utility(ies) shown hereon have been investigated by ASE in accordance with SUE Industry Standards Quality Level B (QLB). All other information shown has been provided by others.

Field work was performed between the 11th of January and 11th day of February, A.D., 2008.

IN WITNESS WHEREOF, I have hereunto set my hand and seal this 22nd day of February A.D., 2008. Chicago, IL.



Steven M. Rienks
STEVEN M. RIENKS - ILLINOIS PROFESSIONAL
ENGINEER NUMBER 62-044619
MY LICENSE EXPIRES 11/30/2009

- TH #1
- LEGEND**
- TEST HOLE LOCATION (SUE QUALITY LEVEL A)
 - T — EXISTING UNDERGROUND TELEPHONE
 - W — EXISTING UNDERGROUND WATER
 - S — EXISTING SANITARY SEWER
 - O — EXISTING UNDERGROUND OIL
 - FO — EXISTING UNDERGROUND FIBER OPTIC
 - E — EXISTING UNDERGROUND ELECTRIC
 - G — EXISTING UNDERGROUND GAS
 - CTV — EXISTING UNDERGROUND CABLE TV
 - A — EXISTING OVERHEAD UTILITY LINE CROSSING

- NOTES:**
- Horizontal Control, Vertical Control, and Centerline Alignment were supplied by Illinois Department of Transportation, from Contract PTB #118/016 Work Order #9, dated April 4, 2003 to May 16, 2003, by Robinson Engineering, LTD. Units are Metric
 - Aqua Illinois Underground Water Line Locations shown are based on field markings by Utility Owner.

REVISIONS		ILLINOIS DEPARTMENT OF TRANSPORTATION SUE Investigation of Underground Utilities IL 394 / IL 1/ Goodenow Road In Will County Job No. D-91-104-07 PTB #143-004
NAME	DATE	

SCALE 1:500
DATE 2/22/2008
DRAWN BY: M.B.
CHECKED BY: S.R.
SHEET 9 of 15

AMERICAN
SURVEYING & ENGINEERING, P.C.

**SURVEYORS · ENGINEERS
GEODESISTS · MAPPING SCIENTISTS**

Dixon: 815-288-6231 / Fax 815-288-6277 Detroit: 248-465-9634 / Fax 248-465-9635
Chicago: 773-444-0800 / Fax 773-444-0808 Aurora: 603-897-4105 / Fax 630-897-4121
Illinois Professional Design Firm No. 164-003182

PLOT DATE = #DATE#
FILE NAME = #FILE#
PLOT SCALE = #SCALE#
USER NAME = #USER#