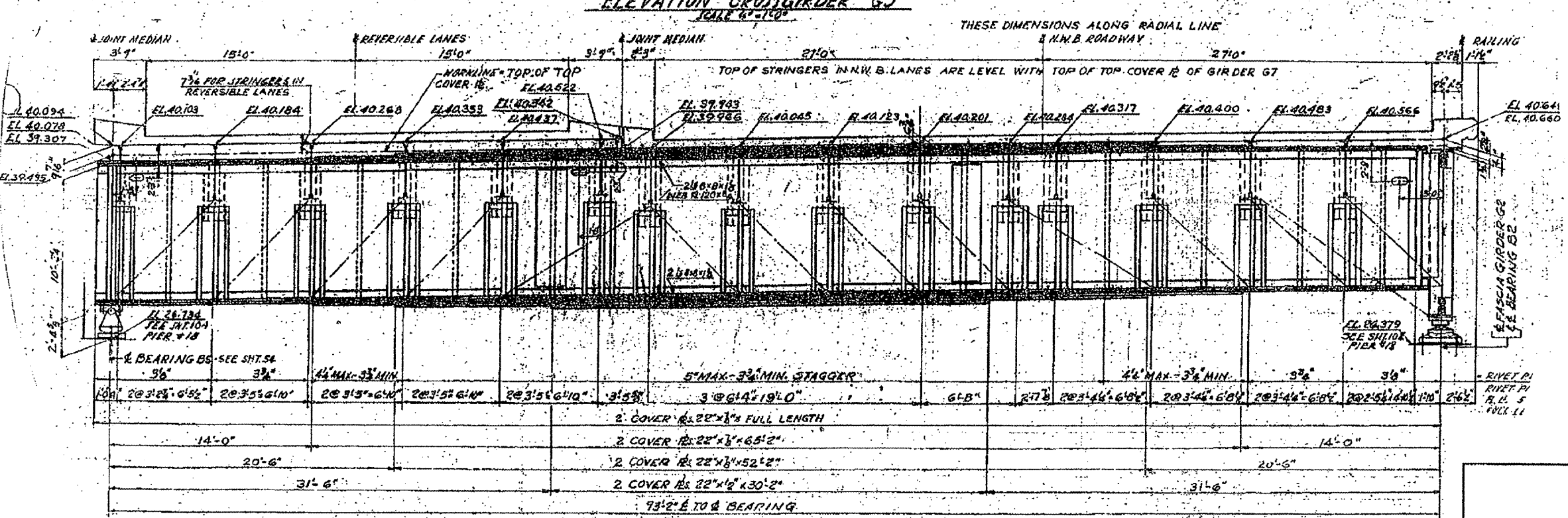
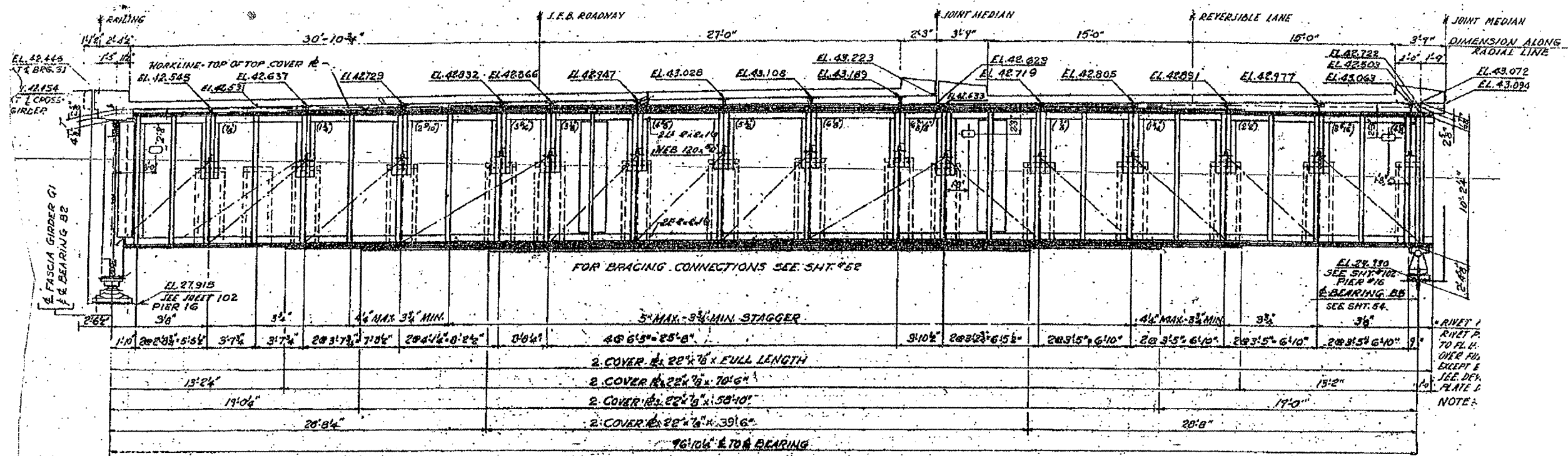


ROUTE VARIOUS	SECTION 2008-053 BP	COUNTY VARIOUS	TOTAL SHEETS 69	SHEET NUMBER 40A
------------------	------------------------	-------------------	-----------------------	------------------------

CONTRACT NO. 60F04



FASCIA GIRDERS G1 AND G2 ARE 144" DEEP
PLATE GIRDERS WITH 24" WIDE TOP AND
BOTTOM FLANGES

LOCATION NO. 8

**EXIST. BRIDGE PLANS
I-90/94 OVER ASHLAND AVE.
SN 016-0133**

APPROVED AS BY
BY
DIVISIONS OF W
SCALE OF TRACING
1"=1'-0"
0 1 2 3 4 5 6 7 8
SHEET 4 OF 4

NOTE:
ALL RIVETS IN G5 AND G7
SHALL BE 1" IN 1/16" HOLES