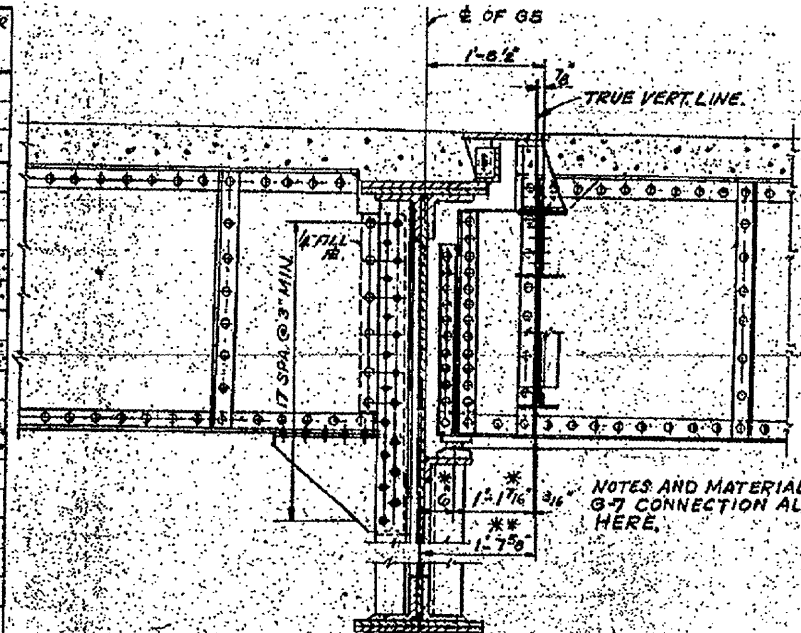


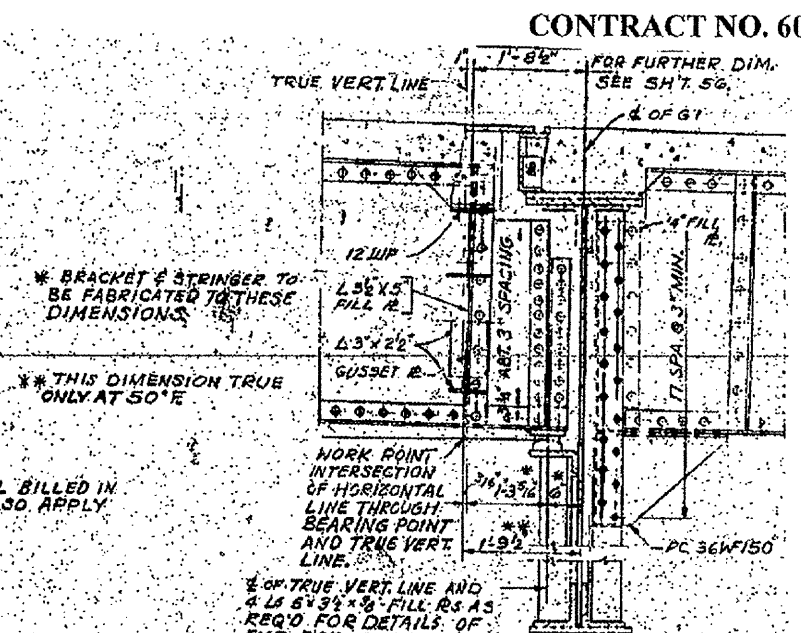
ROUTE VARIOUS	SECTION 2008-053 BP	COUNTY VARIOUS	TOTAL SHEETS 69	SHEET NUMBER 40
------------------	------------------------	-------------------	--------------------	--------------------

STEEL STRINGER SCHEDULE

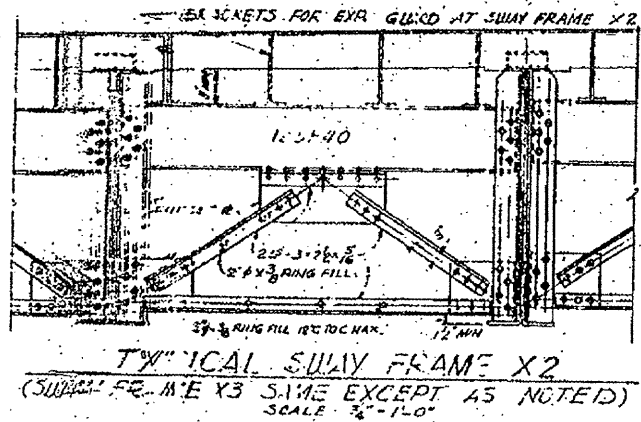
STEEL STRINGER NUMBER	DISTANCE BETWEEN BEARINGS	DISTANCE BETWEEN CROSS GIRDERS	TOP ANGLE	BOTTOM ANGLE	FIRST BOTTOM COVER #	SECOND BOTTOM COVER #	SHEAR CONNECTOR SPACING	RIVET PANEL A	RIVET PANEL B	RIVET PANEL C	RIVET PANEL D	CAMBER DIM.
SB 1	67'-0"		4"x4"	6"x4"	13"x2-10-0		27'6" 9@9" 8@12" 15" MAX.	4"	4"	5"	6"	7/16"
SB 2	67'-1 1/2"		4"x4"	6"x4"	13"x2-10-0		17'9" 7@12" 4@15" 18" MAX.	4"	4"	5"	6"	7/16"
SB 3		68'-3 3/4"	4"x4"	6"x4"	13"x2-10-0		27'6" 9@9" 8@12" 15" MAX.	4"	4"	4 1/2"	5 1/2"	7/16"
SB 4		68'-3 3/4"	4"x4"	6"x4"	13"x2-33-6		21'6" 11@9" 6@12" 4@15" 18" MAX.	4"	4"	4 1/2"	5 1/2"	7/16"
SB 5	67'-3 3/4"		4"x4"	6"x4"	13"x2-33-6		21'6" 11@9" 6@12" 4@15" 18" MAX.	4"	4"	4 1/2"	5 1/2"	7/16"
SB 6	67'-3 3/4"		4"x4"	6"x4"	13"x2-33-6		21'6" 11@9" 6@12" 4@15" 18" MAX.	4"	4"	4 1/2"	5 1/2"	7/16"
SB 7		66'-11 1/2"	4"x4"	6"x4"	13"x2-31-6		30'6" 10@9" 3@12" 15" MAX.	4"	4"	5"	5 1/2"	7/16"
SB 7A		66'-11 1/2"	4"x4"	6"x4"	13"x2-31-6		8@18" 24" MAX.	4"	4"	5"	5 1/2"	7/16"
SB 7B		66'-11 1/2"	4"x4"	6"x4"	13"x2-31-6		8@18" 24" MAX.	4"	4"	5"	5 1/2"	7/16"
SB 8		65'-11 1/2"	4"x4"	6"x4"	13"x2-31-6		8@18" 24" MAX.	4"	4"	5"	5 1/2"	7/16"
SB 9	65'-11 1/2"		4"x4"	6"x4"	13"x2-31-6		8@18" 24" MAX.	4"	4"	5"	5 1/2"	7/16"
SB 10	65'-11 1/2"		4"x4"	6"x4"	13"x2-31-6		8@18" 24" MAX.	4"	4"	5"	5 1/2"	7/16"
SB 11	71'-6 1/2"		4"x4"	6"x4"	13"x2-14-0		21'6" 15@9" 6@12" 5@15" 18" MAX.	4"	4"	4 1/2"	5 1/2"	5/8"
SB 12	71'-4 1/2"		4"x4"	6"x4"	13"x2-14-0		21'6" 15@9" 6@12" 5@15" 18" MAX.	4"	4"	4 1/2"	5 1/2"	5/8"
SB 13	71'-3 1/2"		4"x4"	6"x4"	13"x2-14-0		21'6" 15@9" 6@12" 5@15" 18" MAX.	4"	4"	4 1/2"	5 1/2"	5/8"
SB 14	72'-2 1/4"		4"x4"	6"x4"	13"x2-14-0		21'6" 15@9" 6@12" 5@15" 18" MAX.	4"	4"	4 1/2"	5 1/2"	5/8"
SB 15	72'-2 3/4"		4"x4"	6"x4"	13"x2-14-0		21'6" 15@9" 6@12" 5@15" 18" MAX.	4"	4"	4 1/2"	5 1/2"	5/8"
SB 16	72'-2 3/4"		4"x4"	6"x4"	13"x2-14-0		4@18" 24" MAX.	4"	4"	4 1/2"	5 1/2"	5/8"
SB 17	72'-2 3/4"		4"x4"	6"x4"	13"x2-14-0		4@18" 24" MAX.	4"	4"	4 1/2"	5 1/2"	5/8"
SB 18	72'-2 3/4"		4"x4"	6"x4"	13"x2-14-0		27'6" 14@9" 7@12" 15" MAX.	4"	4"	4 1/2"	5 1/2"	5/8"
SB 19	71'-9 1/2"		4"x4"	6"x4"	13"x2-14-0		4@18" 24" MAX.	4"	4"	4 1/2"	5 1/2"	5/8"
SB 20	71'-9 1/2"		4"x4"	6"x4"	13"x2-14-0		21'6" 15@9" 6@12" 5@15" 18" MAX.	4"	4"	4 1/2"	5 1/2"	5/8"
SB 21	54'-6 7/8"		4"x4"	6"x4"	13"x2-17-0		18@6" 13@9" 4@12" 15" MAX.	4"	4"	5"	6"	3/8"
SB 22	55'-4 1/2"		4"x4"	6"x4"	13"x2-17-0		22@6" 11@9" 5@12" 15" MAX.	4"	4"	5"	6"	3/8"
SB 23	55'-8 1/2"		4"x4"	6"x4"	13"x2-17-0		15@6" 12@9" 5@12" 3@15" 18" MAX.	4"	4"	5"	6"	3/8"
SB 24	55'-11 1/2"		4"x4"	6"x4"	13"x2-17-0		15@6" 12@9" 5@12" 3@15" 18" MAX.	4"	4"	5"	6"	3/8"
SB 25	56'-3 1/2"		4"x4"	6"x4"	13"x2-17-0		15@6" 12@9" 5@12" 3@15" 18" MAX.	4"	4"	5"	6"	3/8"
SB 26	56'-7 1/2"		4"x4"	6"x4"	13"x2-17-0		7@18" 24" MAX.	4"	4"	5"	6"	3/8"
SB 27	57'-2 1/2"		4"x4"	6"x4"	13"x2-17-0		7@18" 24" MAX.	4"	4"	5"	6"	3/8"
SB 28	57'-6 1/2"		4"x4"	6"x4"	13"x2-25-6		24@6" 8@9" 5@12" 3@15" 18" MAX.	4"	4"	5"	6"	3/8"
SB 29	57'-9 1/2"		4"x4"	6"x4"	13"x2-25-6		24@6" 8@9" 5@12" 3@15" 18" MAX.	4"	4"	5"	6"	3/8"
SB 30	58'-1 1/2"		4"x4"	6"x4"	13"x2-25-6		24@6" 8@9" 5@12" 3@15" 18" MAX.	4"	4"	5"	6"	3/8"
SB 31	58'-5 1/2"		4"x4"	6"x4"	13"x2-25-6		24@6" 8@9" 5@12" 3@15" 18" MAX.	4"	4"	5"	6"	3/8"
SB 32	58'-9 1/2"		4"x4"	6"x4"	13"x2-25-6		3@12" 5@15" 7@18" 24" MAX.	4"	4"	5"	6"	3/8"
SB 33	58'-11 1/2"		4"x4"	6"x4"	13"x2-25-6		3@12" 5@15" 7@18" 24" MAX.	4"	4"	5"	6"	3/8"
SB 34	59'-2 1/4"		4"x4"	6"x4"	13"x2-29-6		13@6" 12@9" 8@12" 2@15" 18" MAX.	4"	4"	5"	6"	3/8"
SB 35	59'-6 1/4"		4"x4"	6"x4"	13"x2-29-6		13@6" 12@9" 8@12" 2@15" 18" MAX.	4"	4"	5"	6"	3/8"
SB 36	59'-9 1/2"		4"x4"	6"x4"	13"x2-29-6		13@6" 12@9" 8@12" 2@15" 18" MAX.	4"	4"	5"	6"	3/8"
SB 37	60'-1 1/2"		4"x4"	6"x4"	13"x2-29-6		25@6" 8@9" 5@12" 15" MAX.	4"	4"	5"	6"	3/8"
SB 38	59'-3 1/2"		4"x4"	6"x4"	13"x2-29-6		25@6" 8@9" 5@12" 15" MAX.	4"	4"	5"	6"	3/8"
SB 39	59'-7 1/2"		4"x4"	6"x4"	13"x2-29-6		24@6" 8@9" 3@12" 15" MAX.	4"	4"	5"	6"	3/8"
SB 40	59'-10 1/2"		4"x4"	6"x4"	13"x2-29-6		24@6" 8@9" 3@12" 15" MAX.	4"	4"	5"	6"	3/8"
SB 41	60'-2 1/2"		4"x4"	6"x4"	13"x2-29-6		24@6" 8@9" 3@12" 15" MAX.	4"	4"	5"	6"	3/8"
SB 42	69'-5 1/2"		4"x4"	6"x4"	13"x2-31-0		24" MAX.	4"	4"	4 1/2"	5 1/2"	7/8"
SB 43	69'-5 1/2"		4"x4"	6"x4"	13"x2-31-0		27'6" 14@9" 7@12" 15" MAX.	4"	4"	4 1/2"	5 1/2"	7/8"
SB 44		70'-5 1/2"	4"x4"	6"x4"	13"x2-38-0		4@18" 24" MAX.	4"	4"	4 1/2"	5 1/2"	3/4"
SB 45		70'-5 1/2"	4"x4"	6"x4"	13"x2-42-0		22'6" 15@9" 6@12" 5@15" 18" MAX.	4"	4"	4 1/2"	5 1/2"	7/8"
SB 46		70'-5 1/2"	4"x4"	6"x4"	13"x2-42-0		6@12" 4@15" 6@18" 24" MAX.	4"	4"	5"	6"	3/8"
SB 47		70'-5 1/2"	4"x4"	6"x4"	13"x2-42-0		18@6" 13@9" 4@12" 15" MAX.	4"	4"	5"	6"	3/8"
SB 48		55'-6 1/2"	4"x4"	6"x4"	13"x2-41-0		18@6" 13@9" 4@12" 15" MAX.	4"	4"	5"	6"	3/8"
SB 49		55'-6 1/2"	4"x4"	6"x4"	13"x2-41-0		18@6" 13@9" 4@12" 15" MAX.	4"	4"	5"	6"	3/8"
SB 50		55'-6 1/2"	4"x4"	6"x4"	13"x2-41-0		18@6" 13@9" 4@12" 15" MAX.	4"	4"	5"	6"	3/8"
SB 51	58'-5 1/2"		4"x4"	6"x4"	13"x2-28-0		21@6" 8@9" 6@12" 15" MAX.	4"	4"	5"	6"	3/8"
SB 52	58'-4 1/2"		4"x4"	6"x4"	13"x2-28-0		22@6" 8@9" 7@12" 15" MAX.	4"	4"	5"	6"	3/8"
SB 53	58'-4 1/2"		4"x4"	6"x4"	13"x2-28-0		22@6" 8@9" 7@12" 15" MAX.	4"	4"	5"	6"	3/8"
SB 54	67'-0"		4"x4"	6"x4"	13"x2-28-0		27'6" 9@9" 8@12" 15" MAX.	4"	4"	4 1/2"	5 1/2"	7/8"
SB 55		68'-3 3/4"	4"x4"	6"x4"	13"x2-28-0		27'6" 9@9" 8@12" 15" MAX.	4"	4"	4 1/2"	5 1/2"	7/8"
SB 56		66'-11 1/2"	4"x4"	6"x4"	13"x2-28-0		30@6" 10@9" 8@12" 15" MAX.	4"	4"	5"	5 1/2"	7/8"
SB 57		70'-5 1/2"	4"x4"	6"x4"	13"x2-28-0		22@6" 15@9" 6@12" 5@15" 18" MAX.	4"	4"	4 1/2"	5 1/2"	7/8"
SB 58		55'-6 1/2"	4"x4"	6"x4"	13"x2-28-0		18@6" 13@9" 4@12" 15" MAX.	4"	4"	5"	6"	3/8"
SB 59	58'-4 1/2"		4"x4"	6"x4"	13"x2-28-0		22@6" 8@9" 7@12" 15" MAX.	4"	4"	5"	6"	3/8"



TYPICAL STRINGER-GIRDER CONNECTION AT G-5
SCALE: 3/4" = 1'-0"



TYPICAL STRINGER-GIRDER CONNECTION AT G-7
SCALE: 3/4" = 1'-0"



TYPICAL SULLY FRAME X2
(SULLY FRAME X3 SAME EXCEPT AS NOTED)
SCALE: 3/4" = 1'-0"

NOTE!
ALL WEB PLATES ARE 48" X 3/8"

LOCATION NO. 8
EXIST. BRIDGE PLANS
I-90/94 OVER ASHLAND AVE.
SN 016-0133