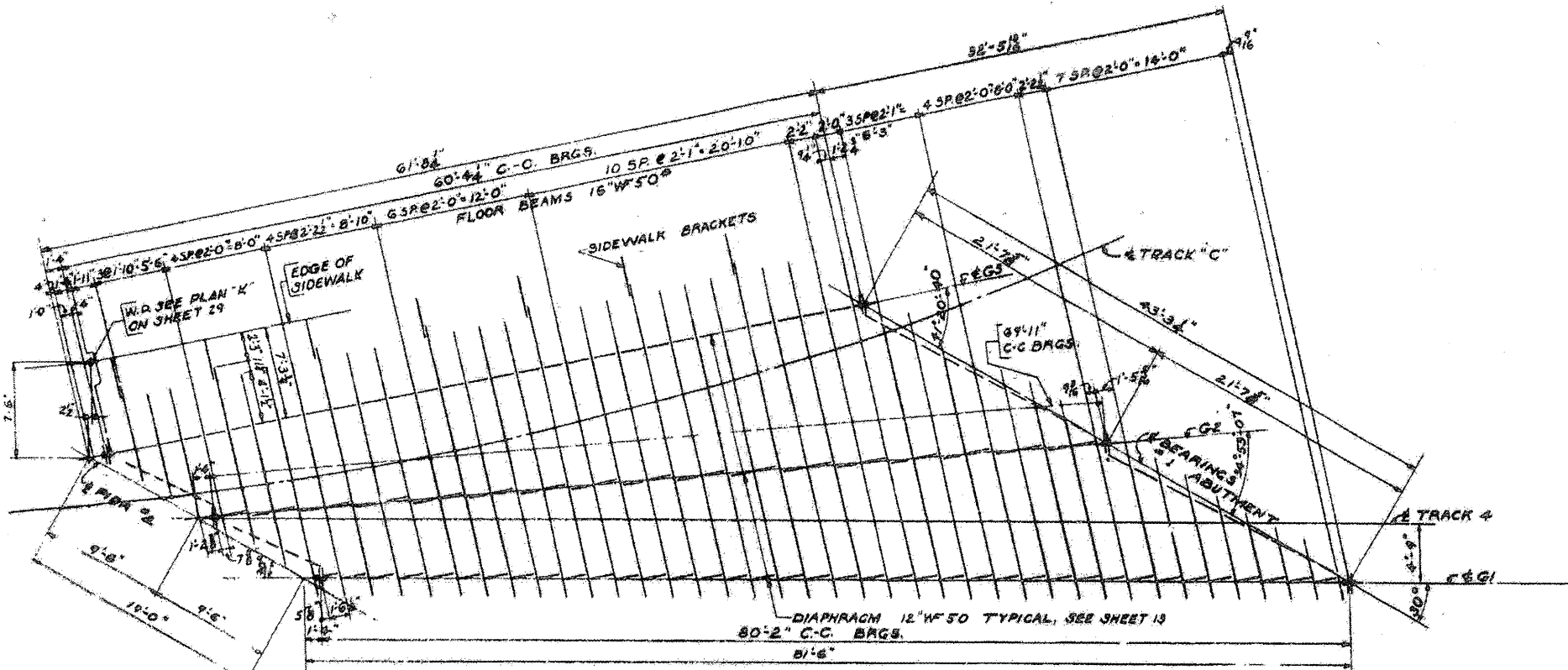


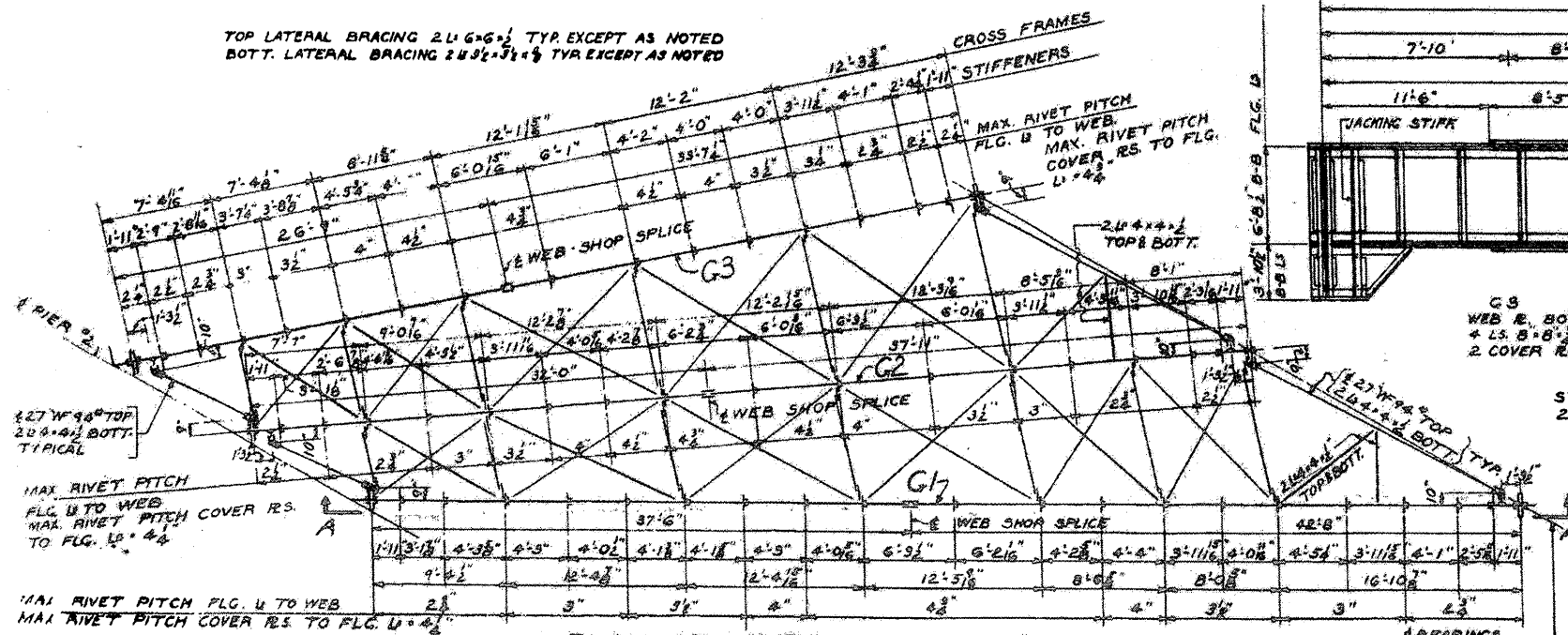
ROUTE VARIOUS	SECTION 2008-053 BP	COUNTY VARIOUS	TOTAL SHEETS 69	SHEET NUMBER 43
------------------	------------------------	-------------------	--------------------	--------------------

CONTRACT NO. 60F04

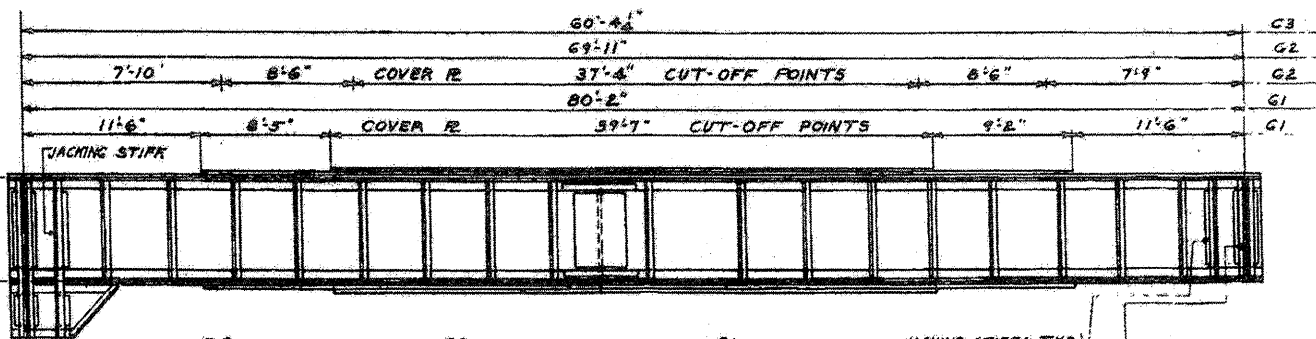


PLAN OF FLOOR BEAMS

TOP LATERAL BRACING 2 L 4x6 3/8 TYP EXCEPT AS NOTED
 BOT. LATERAL BRACING 2 L 4x6 3/8 TYP EXCEPT AS NOTED



PLAN OF LATERAL BRACING



G3
 WEB R. 80x7 1/2
 4 L.S. 8x8 3/4
 2 COVER RS. 20x8

G2
 WEB R. 80x7 1/2
 4 L.S. 8x8 3/4
 4 COVER RS. 20x8
 2 COVER RS. 20x8

G1
 WEB R. 80x7 1/2
 4 L.S. 8x8 3/4
 4 COVER RS. 20x8
 2 COVER RS. 20x8

JACKING STIFFS. TYP.
 2 L 4x7 1/2 F2E
 2 FILL RS 7 1/2x2

END STIFFS TYP.
 4 L 4x7 1/2 F2E
 2 FILL RS. 15x2

STIFFS BETWEEN X-FRAMES
 2 L 4x6 3/8 CRIMPED

STIFFS @ X-FRAMES
 1 L 4x6 3/8 CRIMPED N.S.
 1 L 4x6 3/8 FS.
 1 FILL R. 4x2 F.S.

ELEV. A-A
 GIRDER G1 SHOWN
 GIRDERS G2 & G3 SIMILAR EXCEPT AS NOTED
 SCALE: 3/16"=1'-0"

LOCATION NO. 9

**EXIST. BRIDGE PLANS
 UP RR OVER I-90/94 & CTA
 SN 016-0119**