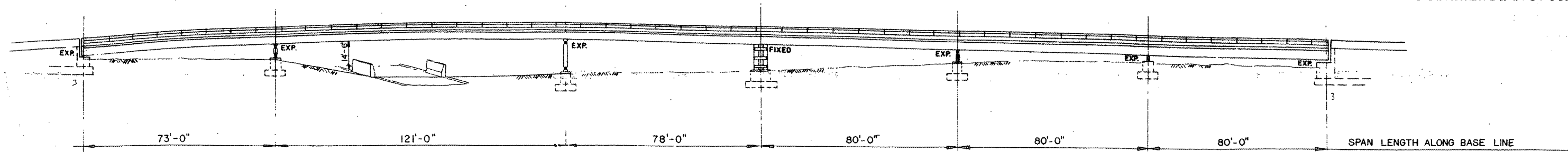
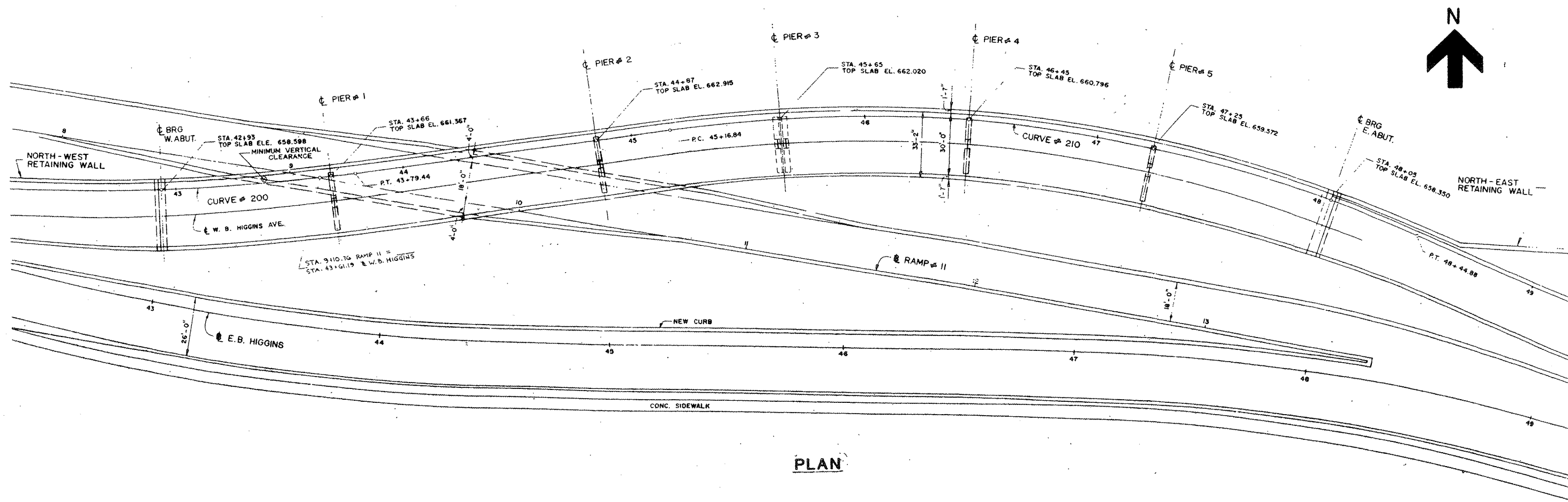


ROUTE VARIOUS	SECTION 2008-053 BP	COUNTY VARIOUS	TOTAL SHEETS 69	SHEET NUMBER 54
------------------	------------------------	-------------------	--------------------	--------------------

CONTRACT NO. 60F04



ELEVATION



PLAN

FOR INFORMATION ONLY

LOCATION NO. 12
EXIST. BRIDGE PLANS
IL 72 WB OVER EB I-90 RAMP
TO IL 43 SN 016-2519