

F.A.U. RTE.	SECTION	COUNTY	TOTAL SHEETS	SHEET NO.
116	06-00104-02-WR	McHENRY	38	1

INDEX OF SHEETS

- 1 COVER SHEET
- 2 GENERAL NOTES
- 3 TYPICAL SECTIONS, ALIGNMENT, TIES AND BENCHMARKS
- 4 SUMMARY OF QUANTITIES
- 5-8 TRAFFIC CONTROL
- 9-10 PLAN & PROFILE
- 11-12 EROSION CONTROL
- 13-15 DRAINAGE & UTILITIES
- 16 PAVEMENT MARKING, SIGNING & LANDSCAPING
- 17 RETAINING WALL, POND REGRADING DETAILS
- 18 CITY OF CRYSTAL LAKE DETAILS
- 19 TRAFFIC CONTROL AND PROTECTION FOR SIDE ROADS, INTERSECTIONS, AND DRIVEWAYS
- 20 RAISED REFLECTIVE PAVEMENT MARKERS
- 21 TYPICAL PAVEMENT MARKINGS
- 22 BUTT JOINT AND HMA TAPER
- 23-38 CROSS SECTIONS

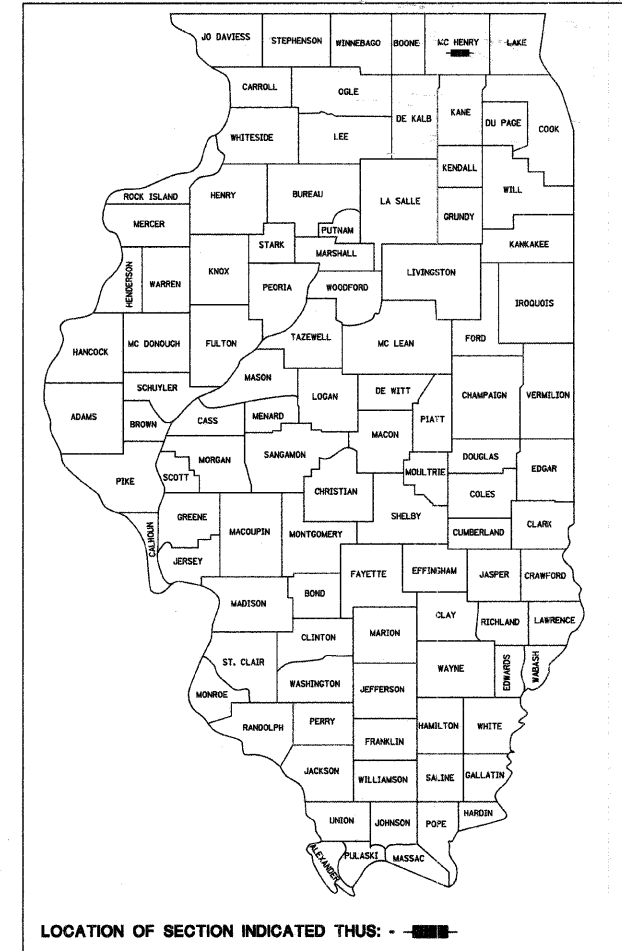
STATE STANDARDS

- 000001-05 STANDARD SYMBOLS, ABBREVIATIONS AND PATTERNS
- 001006 DECIMAL OF AN INCH AND OF A FOOT
- 280001-04 TEMPORARY EROSION CONTROL SYSTEMS
- 424001-05 CURB RAMPS FOR SIDEWALKS
- 442201-03 CLASS C AND D PATCHES
- 542301-02 PRECAST REINFORCED CONCRETE FLARED END SECTION
- 602001-01 CATCH BASIN TYPE A
- 602301-02 INLET - TYPE A
- 602401-02 MANHOLE TYPE A
- 602601-02 PRECAST REINFORCED CONCRETE FLAT SLAB TOP
- 602701-02 MANHOLE STEPS
- 604001-03 FRAME AND LIDS TYPE 1
- 604091-02 FRAME AND GRATE TYPE 24
- 606001-04 CONCRETE CURB TYPE B AND COMBINATION CONCRETE CURB AND GUTTER
- 701301-03 LANE CLOSURE, 2L, 2W, SHORT TIME OPERATIONS
- 701311-03 LANE CLOSURE, 2L, 2W, MOVING OPERATIONS-DAY ONLY
- 701501-05 URBAN LANE CLOSURE, 2L, 2W, UNDIVIDED
- 701801-04 LANE CLOSURE MULTILANE 1W OR 2W CROSSWALK OR SIDEWALK CLOSURE
- 701901-01 TRAFFIC CONTROL DEVICES
- 720001-01 SIGN PANEL MOUNTING DETAILS
- 720006-02 SIGN PANEL ERECTION DETAILS
- 720011-01 METAL POSTS FOR SIGNS, MARKERS AND DELINEATORS
- 729001-01 APPLICATIONS OF TYPE A AND B METAL POSTS (FOR SIGNS AND MARKERS)
- 780001-02 TYPICAL PAVEMENT MARKINGS

STATE OF ILLINOIS DEPARTMENT OF TRANSPORTATION DIVISION OF HIGHWAYS

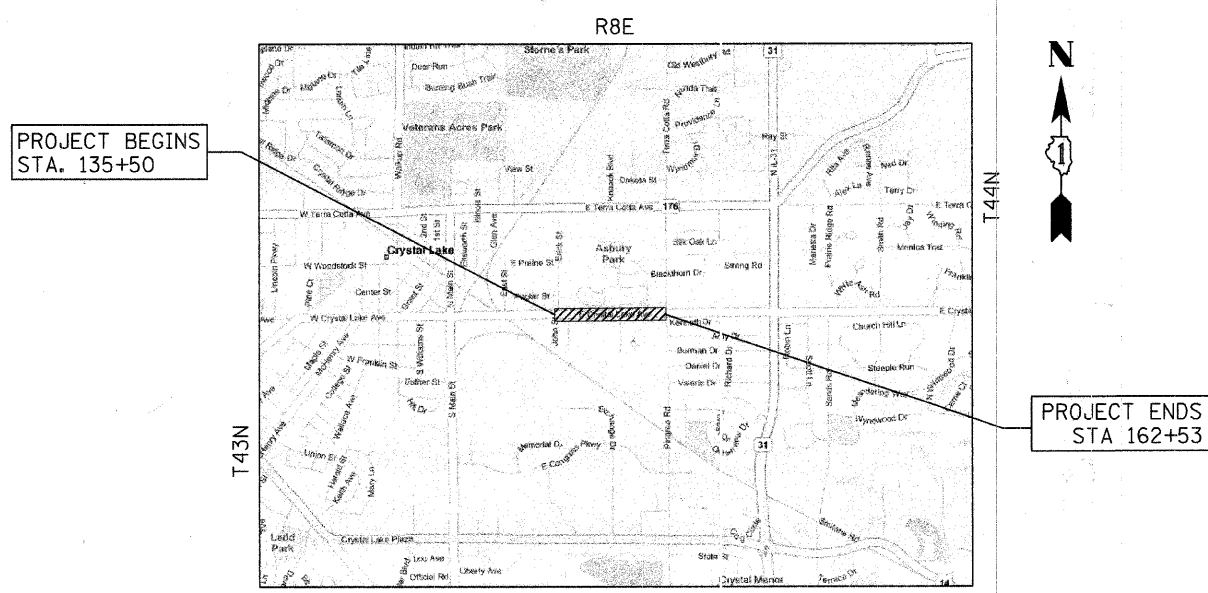
PLANS FOR PROPOSED IMPROVEMENT FEDERAL AID HIGHWAY

**EAST CRYSTAL LAKE AVENUE (FAU 116) (SEGMENT 2)
ERICK STREET (FAU 125) TO PINGREE ROAD (FAU 126)
ROADWAY WIDENING, RESURFACING
MFT SECTION: 06-00104-02-WR
PROJECT M-8003(997)
MCHENRY COUNTY
C-91-383-08**



LOCATION OF SECTION INDICATED THIS: - **█** -

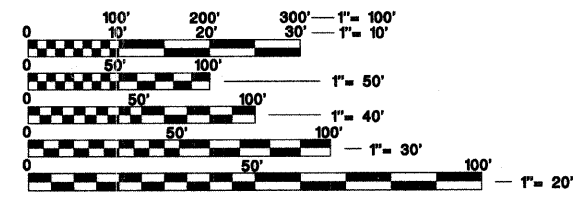
TRAFFIC DATA
ADT: 9000 (2008), 11000 (2030)
SPEED LIMIT: 30 MPH (DESIGN)
SPEED LIMIT: 30 MPH (POSTED)



PROJECT BEGINS
STA. 135+50

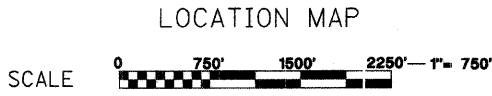
PROJECT ENDS
STA 162+53

**PROJECT LOCATED IN
THE CITY OF CRYSTAL LAKE**



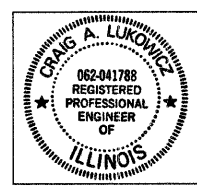
FULL SIZE PLANS HAVE BEEN PREPARED USING STANDARD ENGINEERING SCALES. REDUCED SIZED PLANS WILL NOT CONFORM TO STANDARD SCALES. IN MAKING MEASUREMENTS ON REDUCED PLANS, THE ABOVE SCALES MAY BE USED.

JULIE.
JOINT UTILITY LOCATION INFORMATION FOR EXCAVATION
1-800-892-0123



LOCATION MAP
SCALE 1" = 750'

GROSS LENGTH OF PROJECT = 2703 LIN. FT. (0.51 MILES)
NET LENGTH OF PROJECT = 2703 LIN. FT. (0.51 MILES)
PROJECT LOCATED IN THE CITY OF CRYSTAL LAKE



Craig A. Lukowicz
CRAIG A. LUKOWICZ
ILLINOIS REGISTERED PROFESSIONAL ENGINEER NO. 062-041788
MY LICENSE EXPIRES ON 11-30-09.

DATE 10/20/08

STATE OF ILLINOIS
DEPARTMENT OF TRANSPORTATION
DIVISION OF HIGHWAYS

APPROVED *October 21, 2008*

[Signature] CITY OF CRYSTAL LAKE

PASSED *NOVEMBER 5, 2008*

[Signature] ENGINEER OF LOCAL ROADS AND STREETS

RELEASING FOR BID
BASED ON
LIMITED REVIEW *NOVEMBER 5, 2008*

[Signature] DEPUTY DIRECTOR OF HIGHWAYS, REGION ONE ENGINEER

**PRINTED BY THE AUTHORITY
OF THE STATE OF ILLINOIS**

CONSULTING ENGINEERS SCIENTISTS & LAND SURVEYORS

Bollinger, Lach & Associates, Inc.
333 Pierce Road, Suite 200 Itasca, Illinois 60143
830 438 6400 FAX 830 438 6444
www.bollingerlach.com