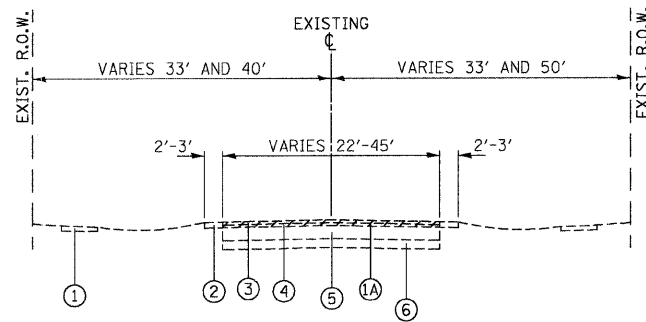
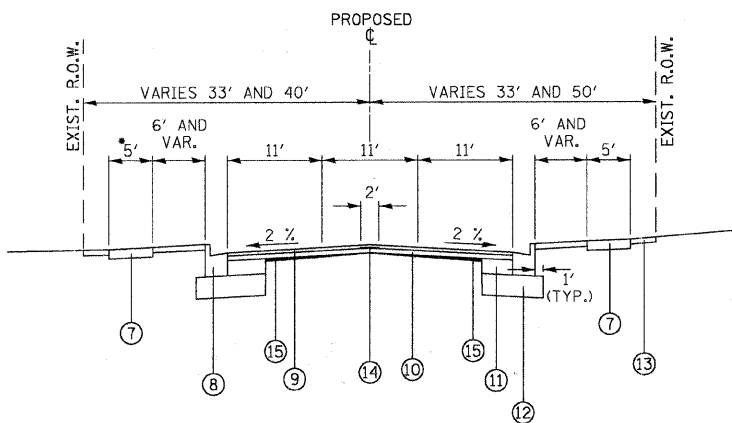


F.A.U. RTE.	SECTION	COUNTY	TOTAL SHEETS	SHEET NO.
116	06-00104-02-WR	McHENRY	38	3
STA. 137+17 TO STA. 162+53		TO STA.		
FED. ROAD DIST. NO. 1 ILLINOIS FED. AID PROJECT				



CRYSTAL LAKE AVENUE
EXISTING TYPICAL SECTION
STA. 137+17 TO STA. 162+53



CRYSTAL LAKE AVENUE
PROPOSED TYPICAL SECTION
STA. 137+17 TO STA. 162+53

- 7' SIDEWALK ADJACENT TO CURB FROM STA. 145+95.24 LT TO STA. 146+19.27 LT, FROM STA. 158+33.50 RT TO STA. 158+57.52 RT AND FROM 157+4.28 LT TO 158+56.31 LT RIGHT TURN LANE STA. 150+72.00 TO STA. 153+75.59

HMA MIXTURE REQUIREMENTS CHART

ITEM	AC TYPE	VOIDS	THICKNESS
DRIVEWAYS			
HMA SURFACE COURSE, MIX "C", N50	PG 64-22	4% @ 50 GYR.	2"
HMA BASE COURSE	PG 64-22	4% @ 50 GYR.	6"
ROADWAY WIDENING			
HMA SURFACE COURSE, MIX "D", N70	PG 64-22	4% @ 70 GYR.	1 1/2"
HMA BINDER COURSE, IL-19.0, N70	PG 64-22	4% @ 70 GYR.	2 1/4"
HMA BASE COURSE	PG 64-22	4% @ 70 GYR.	8"
ROADWAY RESURFACING			
HMA SURFACE COURSE, MIX "D", N70	PG 64-22	4% @ 70 GYR.	1 1/2"
HMA BINDER COURSE, IL-19.0, N70	PG 64-22	4% @ 70 GYR.	2 1/4"
LEVELING BINDER (MACHINE METHOD), IL 9.5 mm, N70	PG 64-22	4% @ 70 GYR.	3/4" MIN
PATCHING			
CLASS D PATCHES, TYPE IV, IL-19.0	PG 64-22	4% @ 70 GYR.	10"
TEMPORARY PAVEMENT			
HMA SURFACE COURSE, MIX "D", N70	PG 64-22	4% @ 70 GYR.	1 1/2"
HMA BASE COURSE	PG 64-22	4% @ 70 GYR.	8"

NOTES: THE UNIT WEIGHT USED TO CALCULATE ALL HOT-MIX ASPHALT SURFACE MIXTURE QUANTITIES IS 112 LBS/SQ YD/IN.

WHEN RAP EXCEEDS 20%, THE NEW ASPHALT BINDER IN THE MIX SHALL BE PG 58-22.

THE CONTRACTOR SHALL HAVE THE OPTION OF USING PCC PAVEMENT 8" OR HMA PAVEMENT 9 1/2" FOR TEMPORARY PAVEMENT AS SPECIFIED IN THE SPECIAL PROVISION AND THE MIXTURE REQUIREMENT TABLE ABOVE.

LEGEND:

- EXISTING SIDEWALK, 4' (TYP.)
- PROPOSED HOT-MIX ASPHALT SURFACE REMOVAL, VARIES FROM 0" TO 3"
- EXISTING GRAVEL SHOULDER
- EXISTING SURFACE COURSE, 1 1/2"
- EXISTING BINDER COURSE, 1 1/2"
- EXISTING HMA BASE COURSE, 6"
- PROPOSED PCC SIDEWALK 5", 5' TO 7' WIDE
- PROPOSED TYPE B-6.24 CURB AND GUTTER
- PROPOSED HMA SURFACE COURSE, MIX "D", N70 1 1/2"
- PROPOSED HMA BINDER COURSE, IL-19.0, N70 2 1/4"
- PROPOSED HMA BASE COURSE, 8"
- PROPOSED AGGREGATE SUBGRADE, 12"
- PROPOSED TOPSOIL FURNISH AND PLACE, 4"; SODDING, SALT TOLERANT
- PROPOSED STRIP REFLECTIVE CRACK CONTROL, 2' WIDE
- PROPOSED LEVELING BINDER (MACHINE METHOD), N70, 3/4" MINIMUM

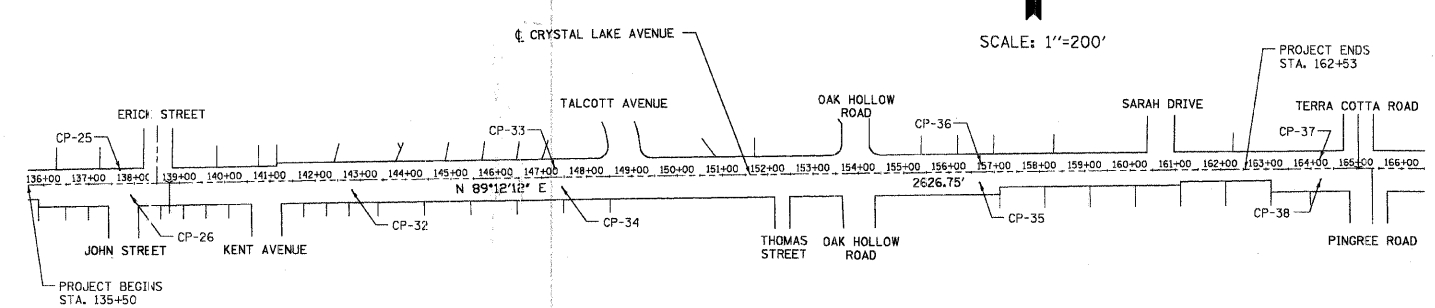
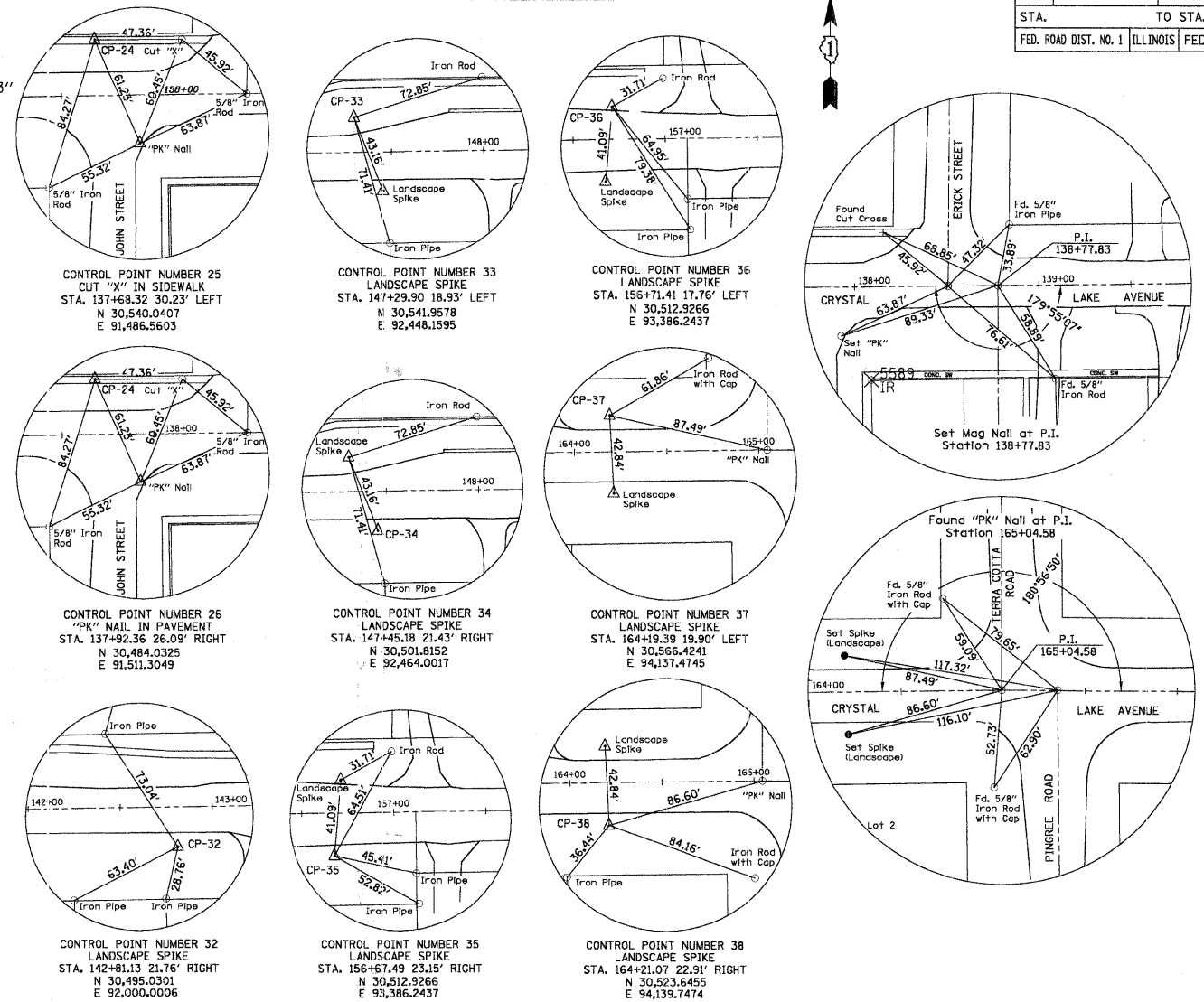
BENCHMARKS

- BM "CRYSTAL LAKE 2A" #6934
ROD IN CONCRETE W/LID @ NWY OF MAIN ST. & WOODSTOCK AVE.
9' FROM H.H. 9' E. OF ORANGE WITNESS POST.
N=2031301.017
E=988877.201
ELEV=928.364
- BM "CRYSTAL LAKE 2B" #6834
ROD IN CONCRETE W/LID +/- 50' S. OF S. ENT. TO # 100 S. MAIN
8' OFF BC +/- 50' N. OF ORANGE WITNESS POST.
+/- 12' FROM F.H.
N=2029472.530
S=988973.533
ELEV=918.778

LOCAL BENCHMARKS

- SE CORNER OF CRYSTAL LAKE & JOHN - FH BE - EDDY VALVE CO, ARROW BOLT - ELEV. 932.23
- 426 CRYSTAL LAKE AVE - FH 9E - EDDY VALVE CO, ARROW BOLT - ELEV. 929.68
- ACROSS FROM 457 CRYSTAL LAKE AVE - FH 11E - 1991 MUELLER, ARROW BOLT - ELEV. 927.04
- ACROSS FROM 483 CRYSTAL LAKE AVE - FH 12E - 1991 MUELLER, ARROW BOLT - ELEV. 925.56
- NE CORNER OAK HOLLOW & CRYSTAL LAKE - FH 14E - 1995 MUELLER, ARROW BOLT - ELEV. 916.70

ALIGNMENT AND TIES



EARTHWORK QUANTITIES

LOCATION (STA TO STA)	EARTH EX. (CU YD)		ADJ. EARTH EX. (1%)		EMBANKMENT (CU YD)		BALANCE WASTE (+) OR SHORTAGE (-)		UNSUITABLE (CU YD)	
	STAGE I	STAGE II	STAGE I	STAGE II	STAGE I	STAGE II	STAGE I	STAGE II	STAGE I	STAGE II
137+17 149+50	576.0	403.3	489.6	342.8	485.1	395.9	4.5	-53.1	351.0	198.0
149+50 162+53	1151.6	403.9	978.9	343.3	301.9	403.2	676.9	-59.9	199.5	217.8
TOTAL	1728	807	1468.5	686.1	787.0	799.1	681	-113	550.5	415.8
GRAND TOTAL	2535						568		1241	

REVISIONS	
NAME	DATE

ILLINOIS DEPARTMENT OF TRANSPORTATION
F.A.U. ROUTE 116 (EAST CRYSTAL LAKE AVE)

TYPICAL SECTIONS,
ALIGNMENT, TIES AND BENCHMARKS

SCALE: NONE
DATE 10/30/08

DRAWN BY LP
CHECKED BY JJP