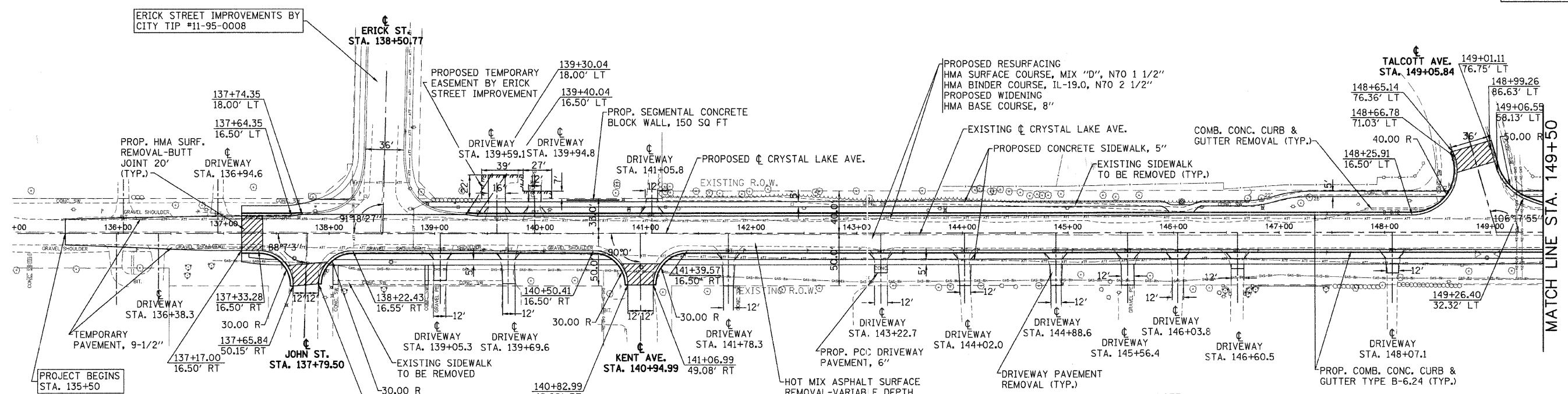
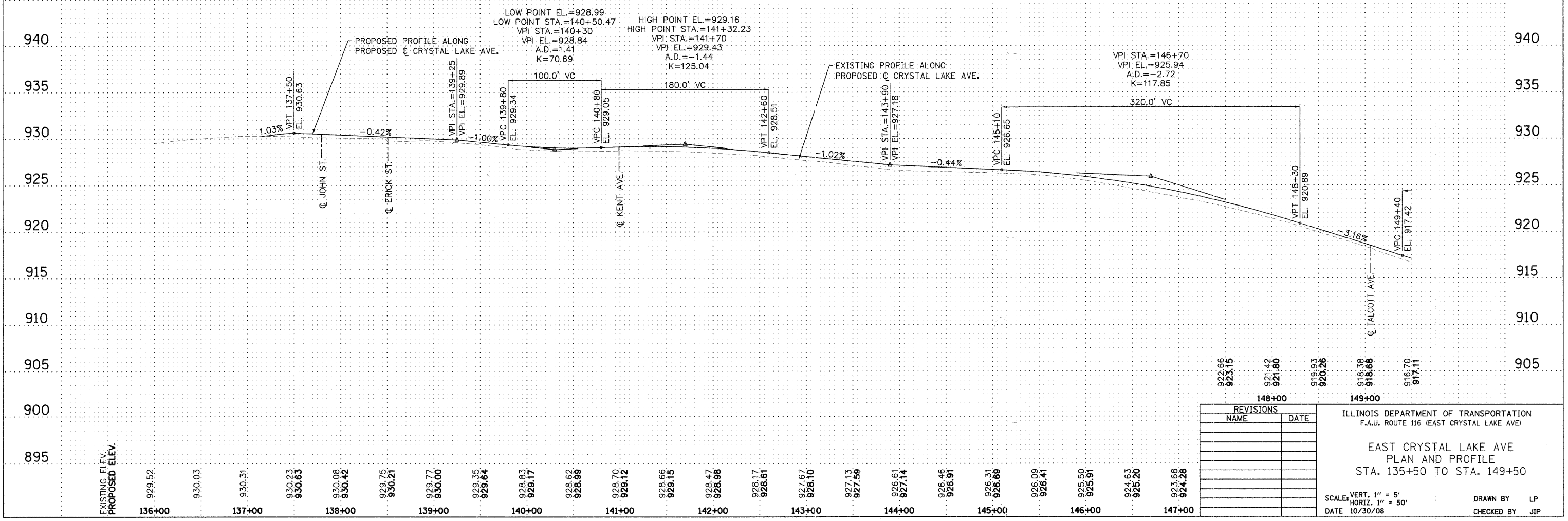


| F.A.U. RTE. | SECTION | COUNTY | TOTAL SHEETS | SHEET NO. |
|-----------------------|----------------|---------------------------|--------------|-----------|
| 116 | 06-00104-02-WR | McHENRY | 38 | 9 |
| STA. 135+50 | | TO STA. 149+50 | | |
| FED. ROAD DIST. NO. 1 | | ILLINOIS FED. AID PROJECT | | |



NOTE:
 - ALL DRIVEWAYS TO BE
 - HMA SURFACE COURSE, MIX "C", N50, 2"
 - HMA BASE COURSE, 6"
 UNLESS OTHERWISE NOTED.



| REVISIONS | |
|-----------|------|
| NAME | DATE |
| | |
| | |
| | |
| | |
| | |
| | |
| | |
| | |
| | |

ILLINOIS DEPARTMENT OF TRANSPORTATION
 F.A.U. ROUTE 116 (EAST CRYSTAL LAKE AVE)
EAST CRYSTAL LAKE AVE
 PLAN AND PROFILE
 STA. 135+50 TO STA. 149+50
 SCALE: VERT. 1" = 5'
 HORIZ. 1" = 50'
 DATE 10/30/08
 DRAWN BY LP
 CHECKED BY JIP