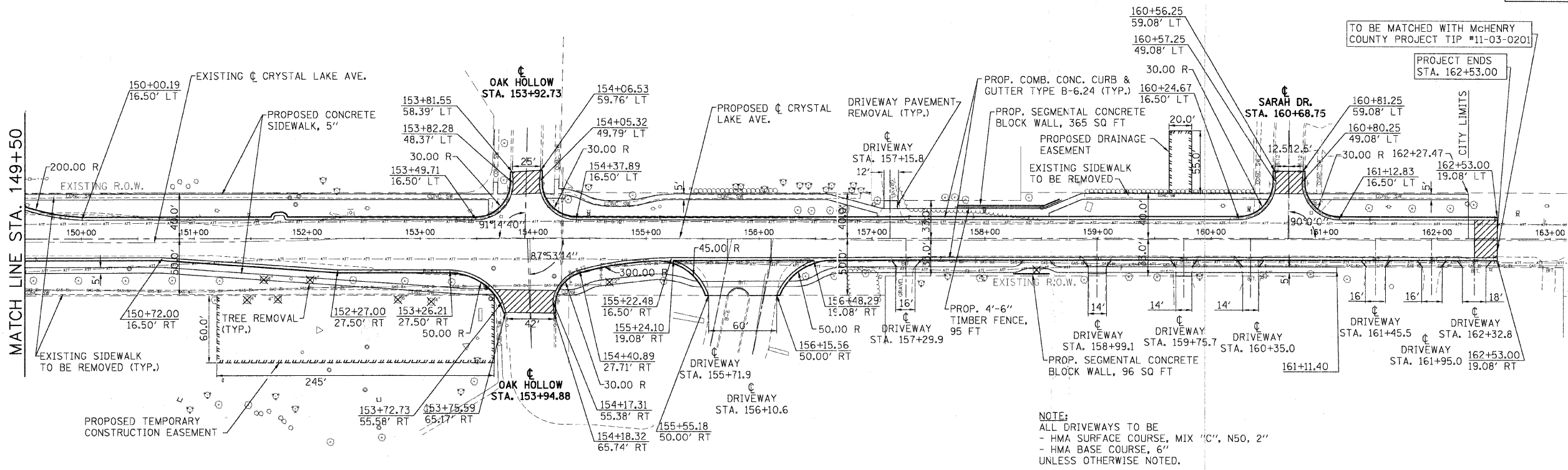
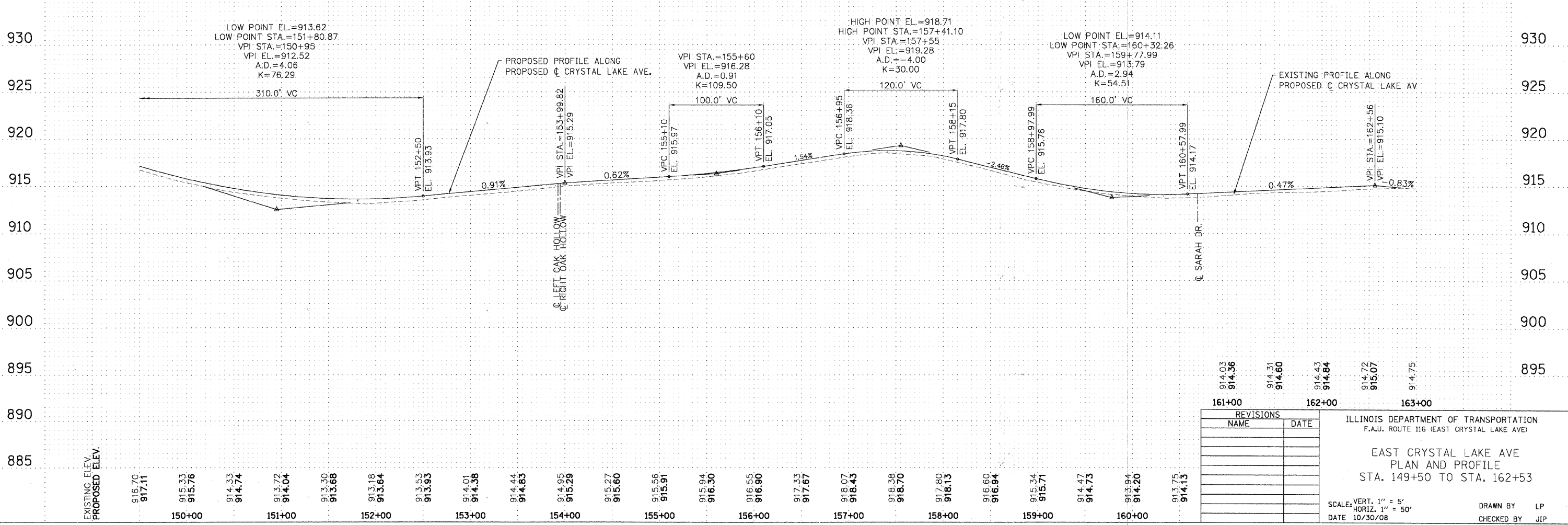


F.A.U. RTE.	SECTION	COUNTY	TOTAL SHEETS	SHEET NO.
116	06-00104-02-WR	McHENRY	38	10
STA. 149+50		TO STA. 162+53		
FED. ROAD DIST. NO. 1		ILLINOIS		FED. AID PROJECT



**NOTE:**  
 - HMA SURFACE COURSE, MIX "C", N50, 2"  
 - HMA BASE COURSE, 6"  
 UNLESS OTHERWISE NOTED.



REVISIONS	
NAME	DATE

ILLINOIS DEPARTMENT OF TRANSPORTATION  
 F.A.U. ROUTE 116 (EAST CRYSTAL LAKE AVE)  
**EAST CRYSTAL LAKE AVE  
 PLAN AND PROFILE  
 STA. 149+50 TO STA. 162+53**  
 SCALE: VERT. 1" = 5'  
 DATE 10/30/08  
 DRAWN BY LP  
 CHECKED BY JJP