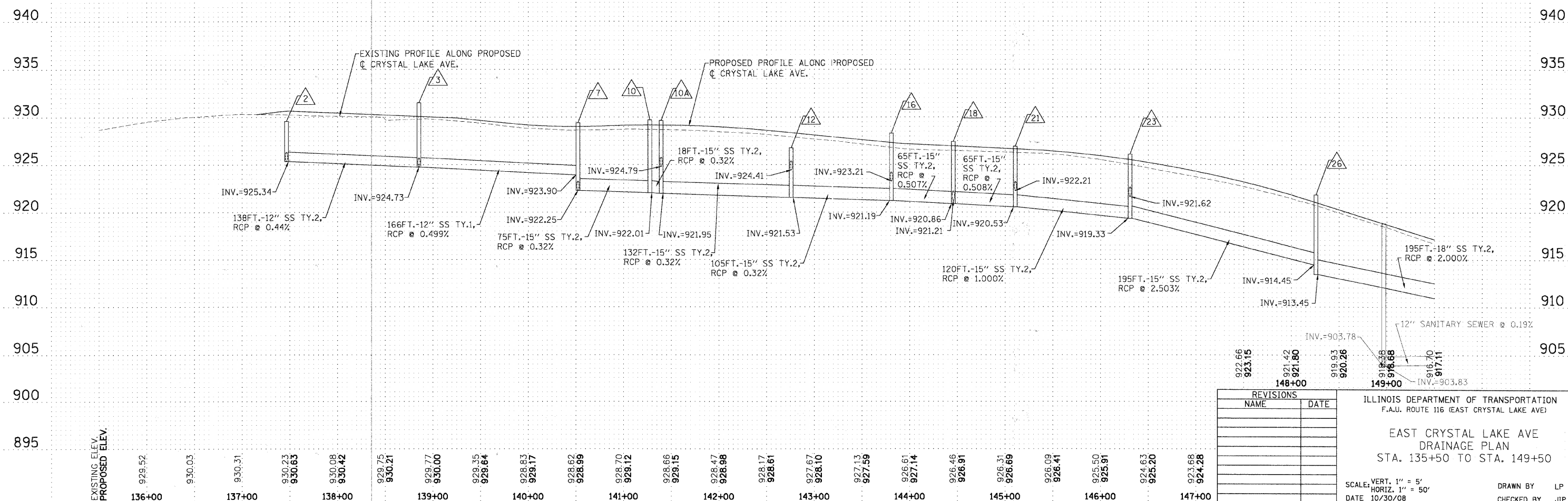
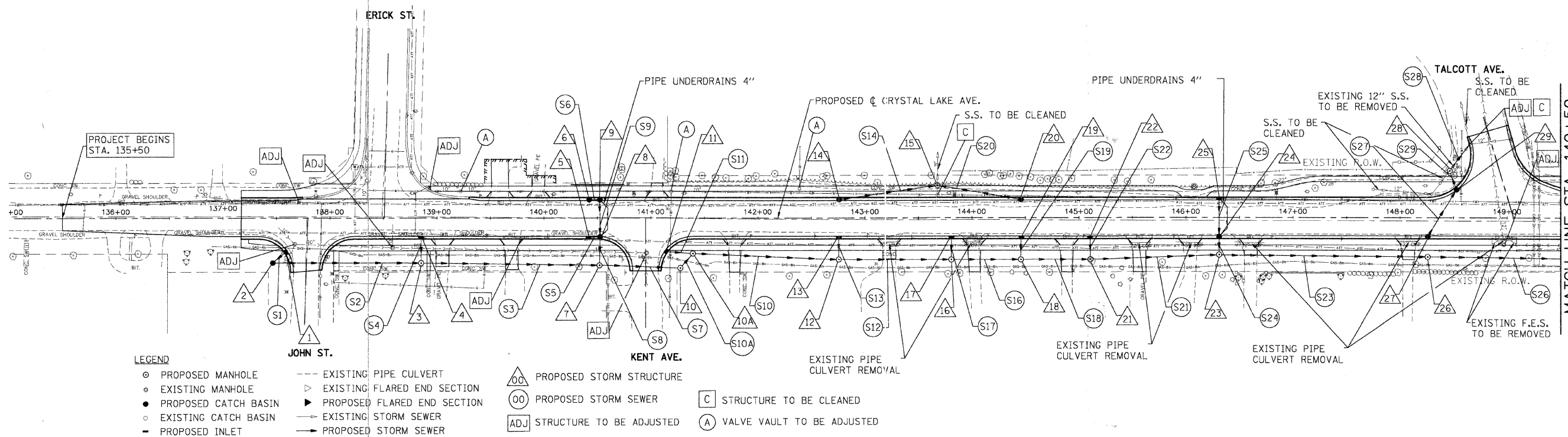


F.A.U. RTE.	SECTION	COUNTY	TOTAL SHEETS	SHEET NO.
116	06-00104-02-WR	McHENRY	38	13
STA. 135+50 TO STA. 149+50				
FED. ROAD DIST. NO. 1 ILLINOIS		FED. AID PROJECT		



REVISIONS	
NAME	DATE

ILLINOIS DEPARTMENT OF TRANSPORTATION
 F.A.U. ROUTE 116 (EAST CRYSTAL LAKE AVE)

**EAST CRYSTAL LAKE AVE
 DRAINAGE PLAN
 STA. 135+50 TO STA. 149+50**

SCALE: VERT. 1" = 5'
 HORIZ. 1" = 50'

DATE 10/30/08

DRAWN BY LP
 CHECKED BY JJP