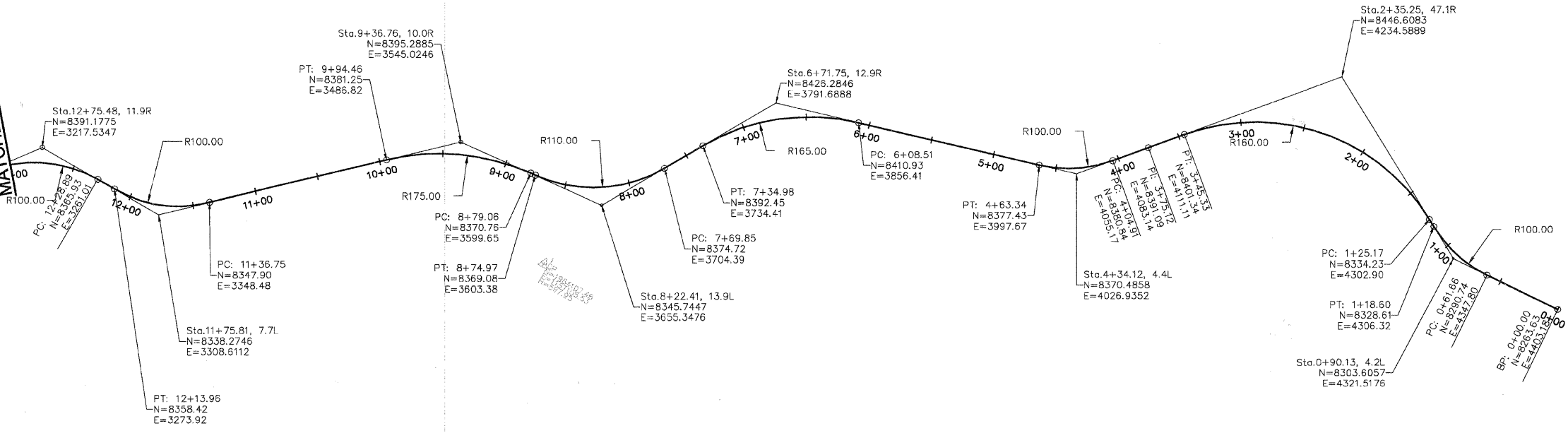


MATCHLINE STA. 13+00



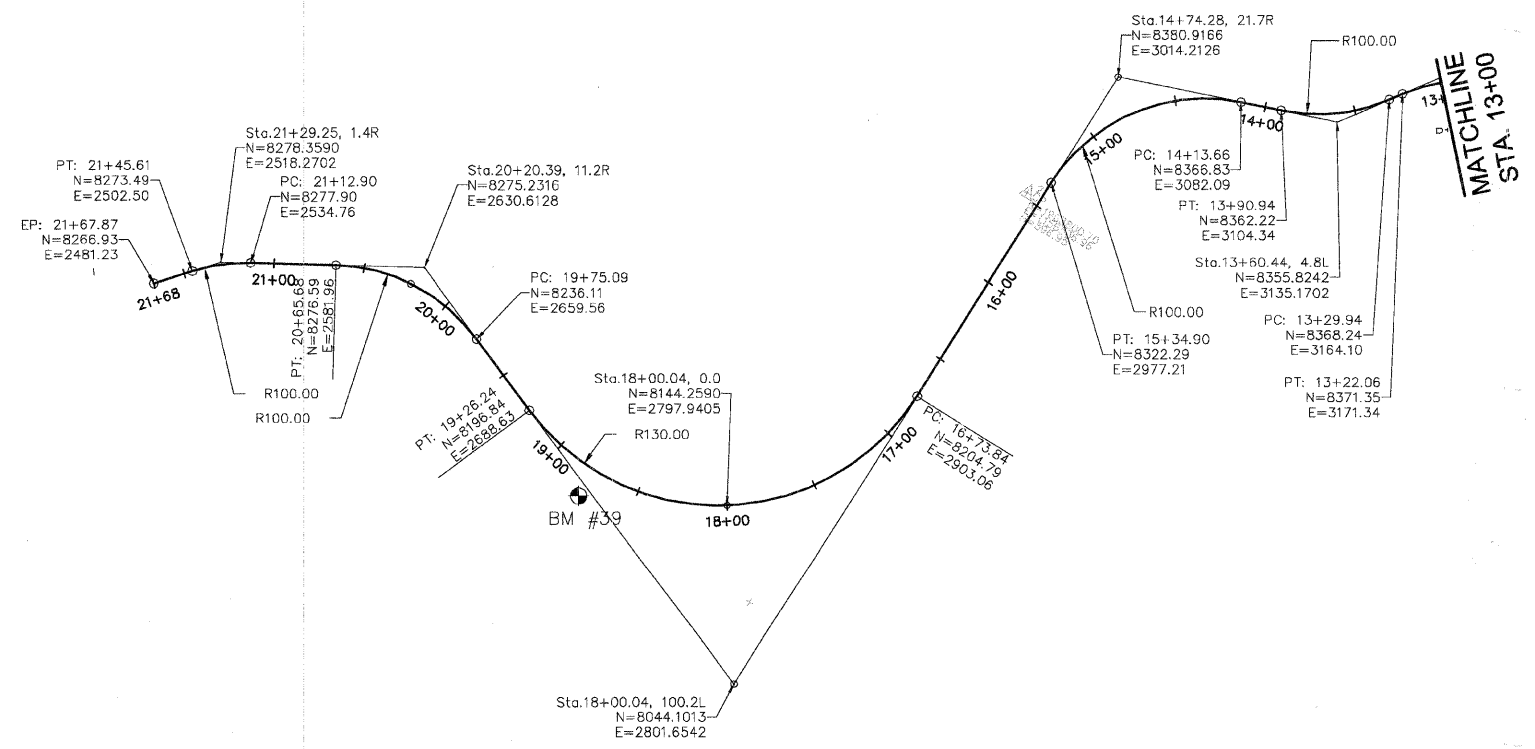
BENCHMARKS

BENCHMARK # 38
 LOCATION : SIMPSON STREET AND BENNET AVE.
 NORTHING: 1963449.672 FEET (9599.48 FEET)
 EASTING: 1153344.626 FEET (19.58 FEET)
 ELEVATION: 24.288 FEET
 ELEVATION FROM EVANSTON DATUM = 579.70 FEET ABOVE MEAN TIDE AT NEW YORK
 COORDINATE SYSTEM: NAD83 STATEPLANE ILLINOIS EAST
 (PROJECT COORDINATE SYSTEM)

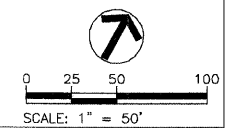
BENCHMARK # 39
 LOCATION : SIMPSON STREET
 NORTHING: 1963530.489 FEET (8146.28 FEET)
 EASTING: 1156408.517 FEET (2718.13 FEET)
 ELEVATION: 18.122 FEET
 ELEVATION FROM EVANSTON DATUM = 579.70 FEET ABOVE MEAN TIDE AT NEW YORK
 COORDINATE SYSTEM: NAD83 STATEPLANE ILLINOIS EAST
 (PROJECT COORDINATE SYSTEM)

BENCHMARK # 40
 LOCATION : ASBURY AVE., NORTH OF SIMPSON
 NORTHING: 1963920.229 FEET (7134.07 FEET)
 EASTING: 1159124.542 FEET (5268.45 FEET)
 ELEVATION: 18.153 FEET
 ELEVATION FROM EVANSTON DATUM = 579.70 FEET ABOVE MEAN TIDE AT NEW YORK
 COORDINATE SYSTEM: NAD83 STATEPLANE ILLINOIS EAST
 (PROJECT COORDINATE SYSTEM)

DESIGN SPEED 20 MPH



MATCHLINE STA. 13+00



| REVISIONS | |
|-----------|------|
| NAME | DATE |
| | |
| | |
| | |
| | |
| | |
| | |
| | |
| | |
| | |

URS 100 S. WACKER DR., SUITE 500 TEL (312)-939-1000
 CHICAGO, IL, 60606 FAX (312)-939-4198

CITY OF EVANSTON
 TWIGGS PARK
 ALIGNMENT TIES
 AND
 BENCHMARKS

DATE : 6/20/08 DRAWN BY : LLM CHECKED BY : BA