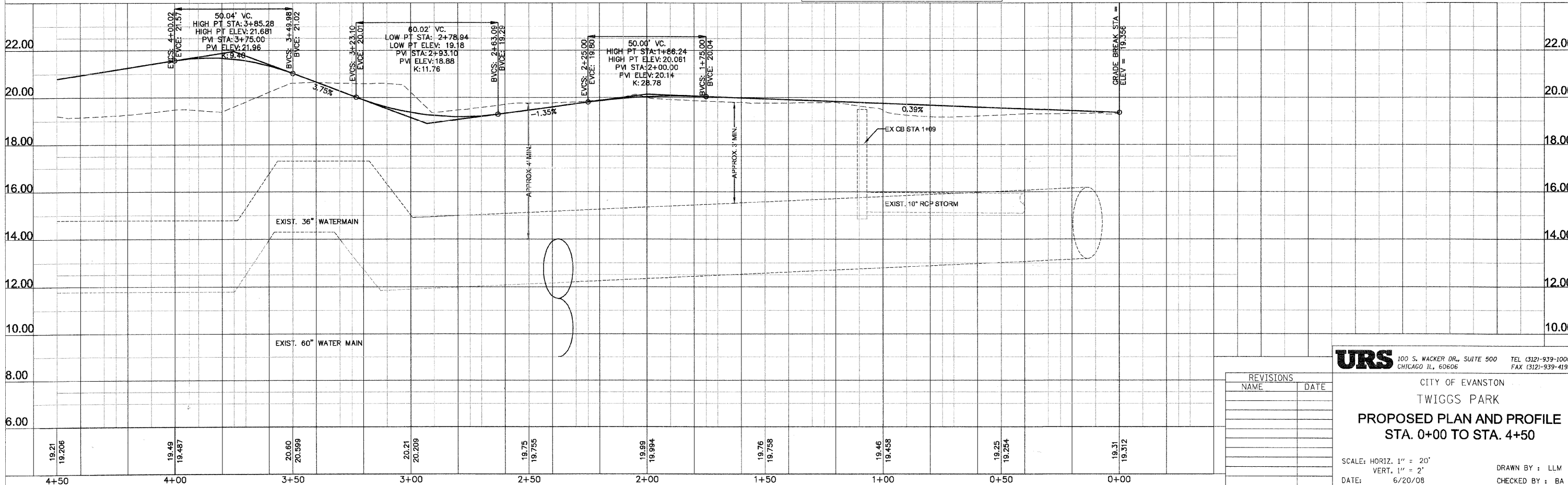


NOTE 1 - GRADING BETWEEN PROPOSED BIKE PATH AND EDGE OF EXISTING PARKING LOT PAVEMENT:  
 STA. 0+13 TO 0+85 - GRADE TO MATCH EDGE OF PAVEMENTS AND SIDEWALKS.  
 STA. 0+85 TO STA. 1+50 - GRADE FROM EDGES OF PARKING LOT AND BIKE PATH TO CATCH BASIN AT STA. 1+13, MINIMIZING DRAINAGE INTO CATCH BASIN.  
 STA. 1+50 TO STA. 2+08 - GRADE TO PROVIDE POSITIVE DRAINAGE FROM PARKING LOT TO BIKE PATH.

LEGEND

	TREE TO BE PROTECTED
	EXISTING TREE TO BE REMOVED
	PERIMETER EROSION BARRIER
	60" WATER MAIN EASEMENT



REVISIONS	
NAME	DATE

**URS** 100 S. WACKER DR., SUITE 500 TEL (312)-939-1000  
 CHICAGO, IL, 60606 FAX (312)-939-4198

CITY OF EVANSTON  
 TWIGGS PARK  
**PROPOSED PLAN AND PROFILE**  
 STA. 0+00 TO STA. 4+50

SCALE: HORIZ. 1" = 20'  
 VERT. 1" = 2'

DATE: 6/20/08 DRAWN BY: LLM  
 CHECKED BY: BA