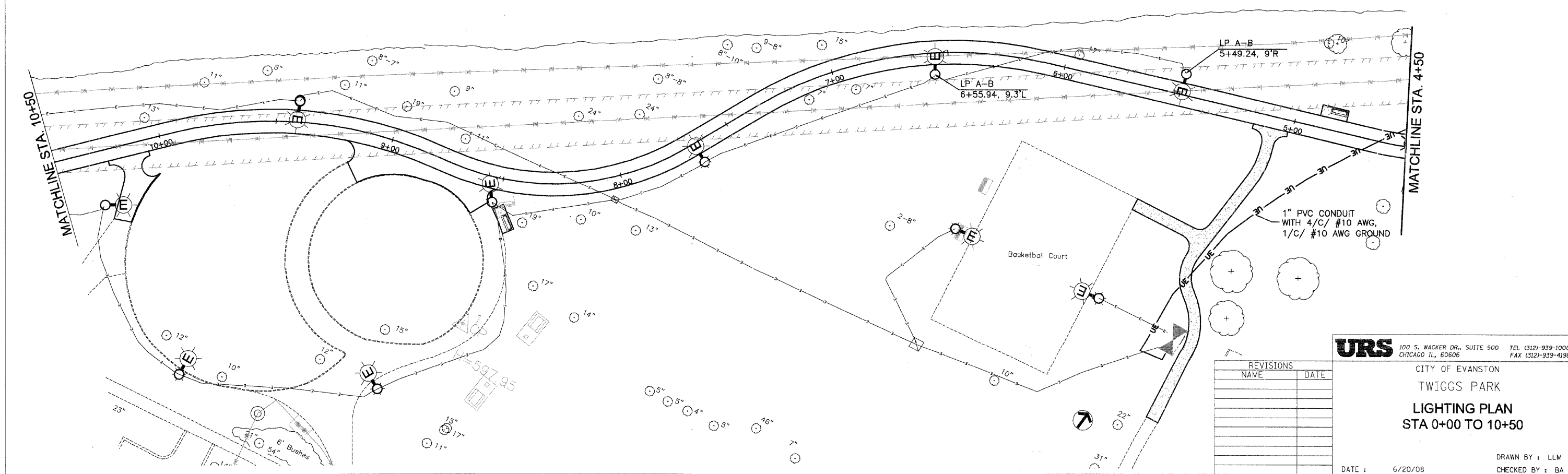
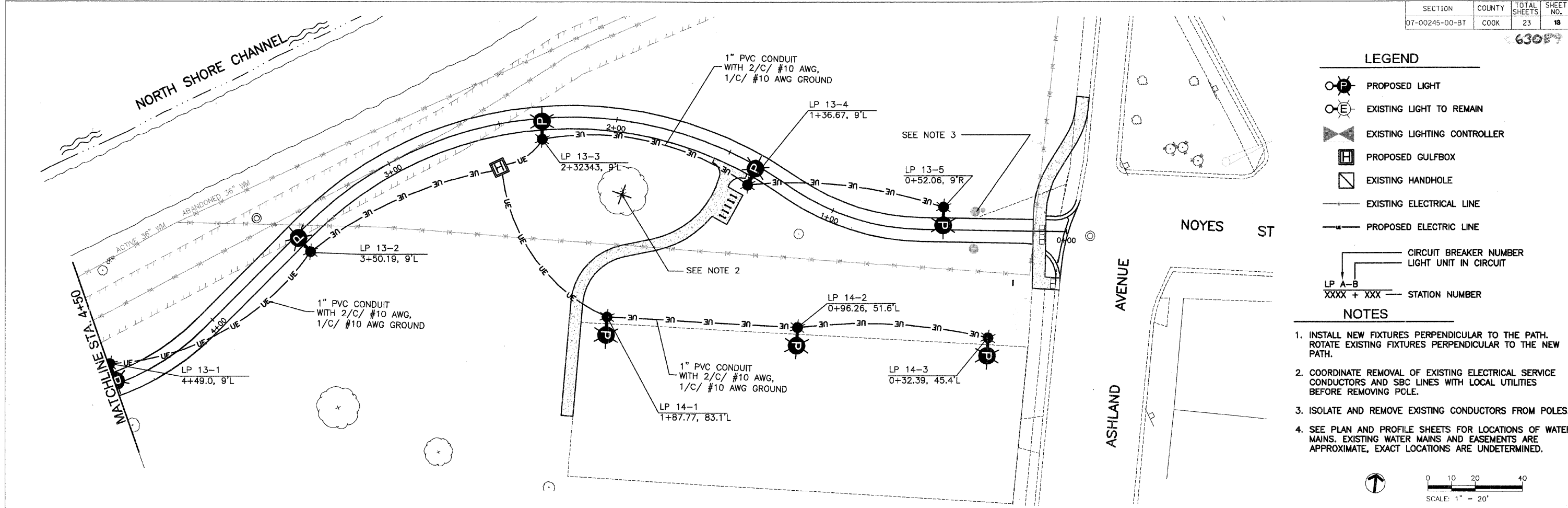
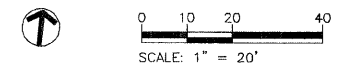


LEGEND

- PROPOSED LIGHT
- EXISTING LIGHT TO REMAIN
- EXISTING LIGHTING CONTROLLER
- PROPOSED GULFBOX
- EXISTING HANDHOLE
- EXISTING ELECTRICAL LINE
- PROPOSED ELECTRIC LINE
- CIRCUIT BREAKER NUMBER
LIGHT UNIT IN CIRCUIT
- LP A-B
XXXX + XXX — STATION NUMBER

NOTES

1. INSTALL NEW FIXTURES PERPENDICULAR TO THE PATH. ROTATE EXISTING FIXTURES PERPENDICULAR TO THE NEW PATH.
2. COORDINATE REMOVAL OF EXISTING ELECTRICAL SERVICE CONDUCTORS AND SBC LINES WITH LOCAL UTILITIES BEFORE REMOVING POLE.
3. ISOLATE AND REMOVE EXISTING CONDUCTORS FROM POLES.
4. SEE PLAN AND PROFILE SHEETS FOR LOCATIONS OF WATER MAINS. EXISTING WATER MAINS AND EASEMENTS ARE APPROXIMATE, EXACT LOCATIONS ARE UNDETERMINED.



| REVISIONS | |
|-----------|------|
| NAME | DATE |
| | |
| | |
| | |
| | |
| | |
| | |
| | |
| | |
| | |
| | |

URS 100 S. WACKER DR., SUITE 500 TEL (312)-939-1000
CHICAGO, IL, 60606 FAX (312)-939-4198

CITY OF EVANSTON
TWIGGS PARK
LIGHTING PLAN
STA 0+00 TO 10+50

DATE : 6/20/08

DRAWN BY : LLM
CHECKED BY : BA