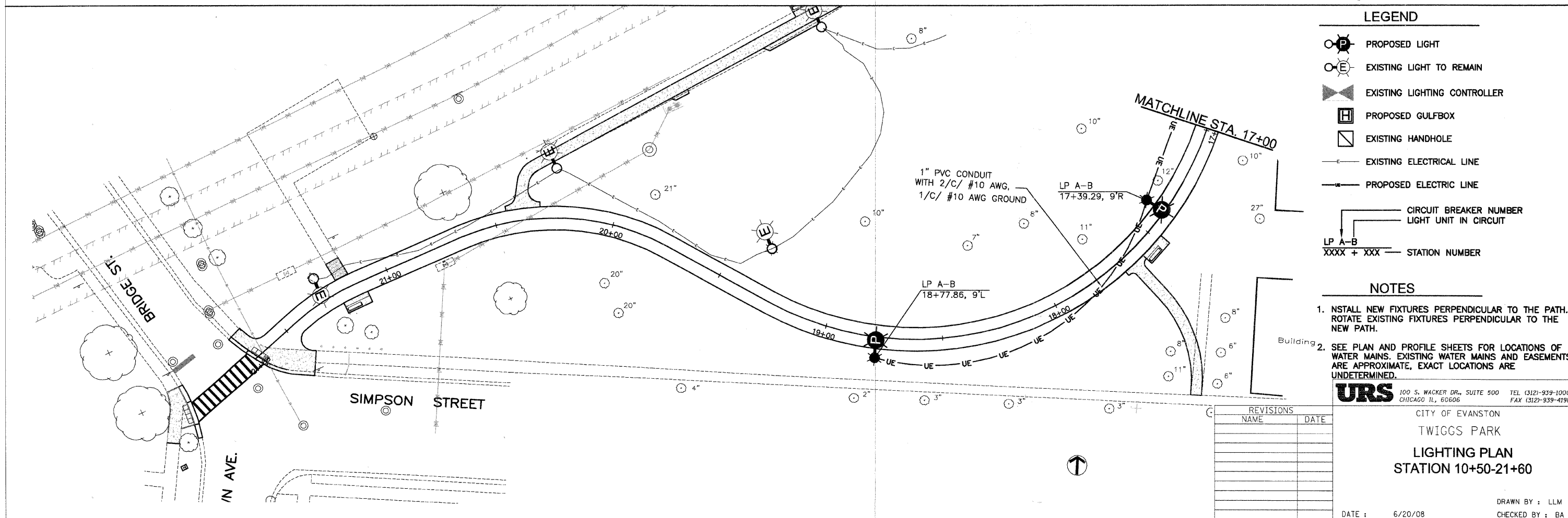
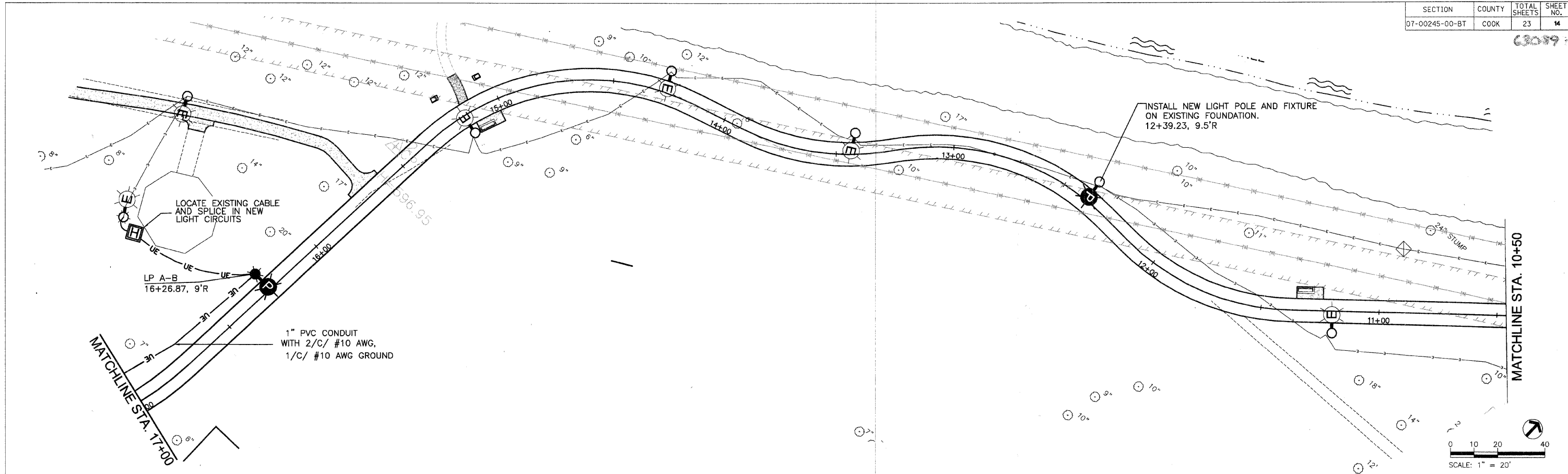


63079



LEGEND

- PROPOSED LIGHT
- EXISTING LIGHT TO REMAIN
- EXISTING LIGHTING CONTROLLER
- PROPOSED GULFBOX
- EXISTING HANDHOLE
- EXISTING ELECTRICAL LINE
- PROPOSED ELECTRIC LINE
- CIRCUIT BREAKER NUMBER
LIGHT UNIT IN CIRCUIT
- LP A-B
XXXX + XXX — STATION NUMBER

- NOTES**
1. INSTALL NEW FIXTURES PERPENDICULAR TO THE PATH. ROTATE EXISTING FIXTURES PERPENDICULAR TO THE NEW PATH.
 2. SEE PLAN AND PROFILE SHEETS FOR LOCATIONS OF WATER MAINS. EXISTING WATER MAINS AND EASEMENTS ARE APPROXIMATE, EXACT LOCATIONS ARE UNDETERMINED.

URS
 100 S. WACKER DR., SUITE 500 TEL (312)-939-1000
 CHICAGO, IL, 60606 FAX (312)-939-4198

REVISIONS	
NAME	DATE

CITY OF EVANSTON
 TWIGGS PARK
 LIGHTING PLAN
 STATION 10+50-21+60

DATE : 6/20/08

DRAWN BY : LLM
 CHECKED BY : BA