

F.A.S. RTE.	SECTION	COUNTY	TOTAL SHEETS	SHEET NO.
301	24T-5	JODAVIESS	43	1
FED. ROAD DIST. NO.	ILLINOIS	CONTRACT NO. 64C69		

STATE OF ILLINOIS
DEPARTMENT OF TRANSPORTATION
DIVISION OF HIGHWAYS

**PROPOSED
HIGHWAY PLANS**

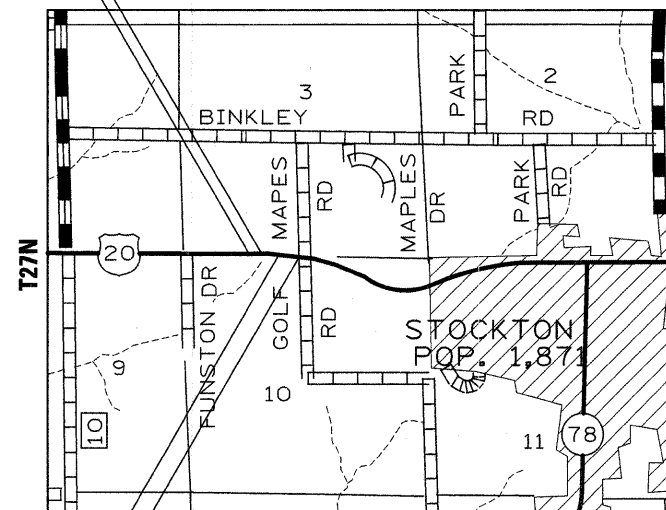
FAP ROUTE 301 (US 20)
SECTION 24T-5
PROJECT NHF-0301(053)
JODAVIESS COUNTY

FOR INDEX OF SHEETS, SEE SHEET NO. 2
FOR STATE STANDARDS, SEE SHEET NO. 2

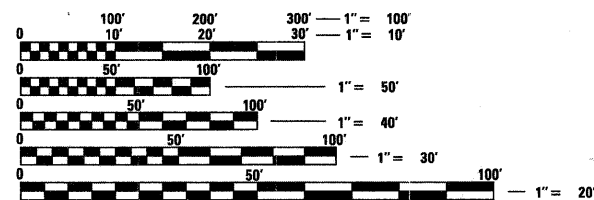
D-92-118-06



IMPROVEMENT BEGINS
STA 2122 + 00
SECTION BEGINS
STA 2122 + 32
STA 2124 + 02.9
STRUCTURE NO. 043-1027
C-92-002-09
R6E



STA 2130 + 85.60
STRUCTURE NO. 043-1028
SECTION ENDS
STA 2134 + 13.5
IMPROVEMENT ENDS
STA 2134 + 75



FULL SIZE PLANS HAVE BEEN PREPARED USING STANDARD ENGINEERING SCALES. REDUCED SIZED PLANS WILL NOT CONFORM TO STANDARD SCALES. IN MAKING MEASUREMENTS ON REDUCED PLANS, THE ABOVE SCALES MAY BE USED.

J.U.L.I.E.
JOINT UTILITY LOCATION INFORMATION FOR EXCAVATION
1-800-892-0123
OR 811

SQUAD ENGINEER: TRACI HELFRICH (815) 284-5932
PROJECT ENGINEER: MASOOD AHMAD

CONTRACT NO. 64C69

GROSS LENGTH OF PROJECT = 1181.5 LIN. FT = 0.22 MI.
NET LENGTH = 1181.5 LIN. FT = 0.22 MI.

STATE OF ILLINOIS
DEPARTMENT OF TRANSPORTATION
DIVISION OF HIGHWAYS

SUBMITTED October 9, 2008
George F. Ryan
DEPUTY DIRECTOR OF HIGHWAYS, REGION ENGINEER

December 5, 2008
Eric E. Horn
INTERIM ENGINEER OF DESIGN AND ENVIRONMENT

December 5, 2008
Christine M. Reed
DIRECTOR OF HIGHWAYS, CHIEF ENGINEER

PRINTED BY THE AUTHORITY
OF THE STATE OF ILLINOIS