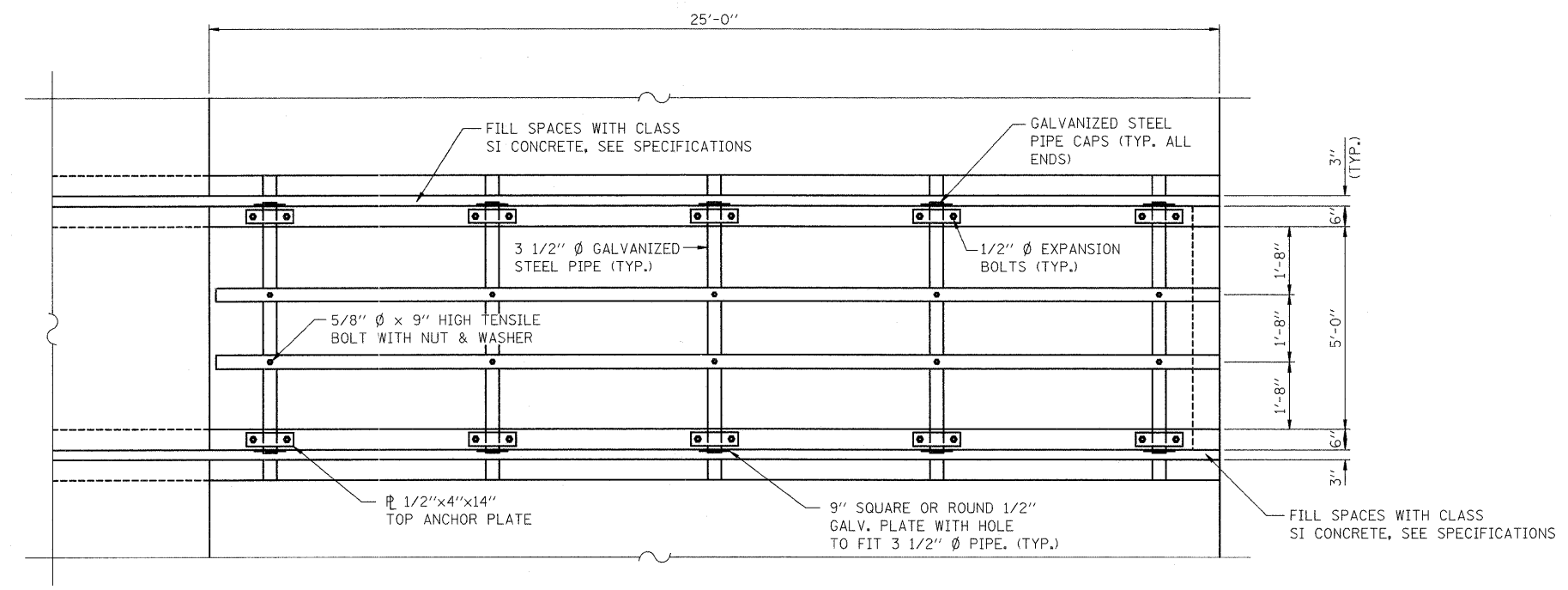


****GRATED CULVERT EXTENSION, NO. 1
BILL OF MATERIAL**

ITEM	UNIT	QUANTITY
3 1/2" Ø GALV. STEEL PIPE	EACH	2 @ 25'-2" 5 @ 6'-2"
1/2"x4"x14" GALV. ANCHOR PLATE	EACH	10
5/8"Ø x 9" GALV. BOLTS	EACH	10
1/2"Ø GALV. EXP. BOLTS	EACH	20
9" SQ. OR ROUND 1/2" GALV. PLATE	EACH	10
GAL. STEEL PIPE CAPS	EACH	14

** QUANTITIES GIVEN ARE FOR EACH GRATED CULVERT EXTENSION, NO. 1 FOR INFORMATIONAL PURPOSES ONLY. COST TO BE INCLUDED IN THE BID ITEM "GRATED CULVERT EXTENSIONS, NO. 1."



PIPE GRATE PLAN
(3 END SECTIONS, EACH END
6 TOTAL)

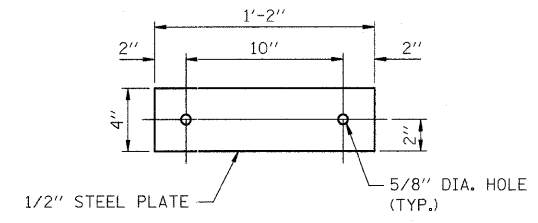
GENERAL NOTES

STEEL PIPES SHALL CONFORM TO A.S.T.M. A-53 (TYPE E OR S) GRADE B, SCHEDULE 40, & SHALL BE GALVANIZED CONFORMING TO A.S.T.M. A-120.

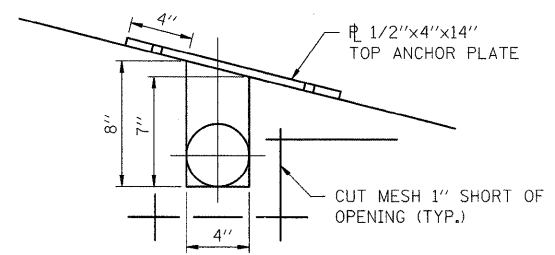
STEEL PLATES SHALL CONFORM TO AASHTO M-183 & SHALL BE GALVANIZED CONFORMING TO AASHTO M-111.

BOLTS, NUTS & WASHERS SHALL BE IN ACCORDANCE WITH ARTICLE 1006.08 OF THE STANDARD SPECIFICATIONS & SHALL BE GALVANIZED.

THE CONTRACT UNIT PRICE "EACH" FOR GRATED CULVERT EXTENSION, NO. 1 SHALL INCLUDE THE EXPANSION BOLTS, GALVANIZED PIPES, CLASS SI CONCRETE, BOLTS, NUTS, REINFORCEMENT, WASHERS & STEEL PLATES.



TOP ANCHOR PLATE
(10 EACH SECTION,
60 TOTAL)



DETAIL "C"

FILE NAME =	USER NAME = dosadd	DESIGNED MGH	REVISED -	STATE OF ILLINOIS DEPARTMENT OF TRANSPORTATION	REGION 2 /DISTRICT 2 GRATED CULVERT EXTENSION STA. 2124 + 09.22 STEEL GRATING DETAILS		F.A.P. RTE.	SECTION	COUNTY	TOTAL SHEETS	SHEET NO.	
#FILES#	PLOT SCALE = 2.0000' / IN.	DRAWN WJH	REVISED -				301	24T-5	JODAVIESS	43	25	
	PLOT DATE = Wed Oct 08 14:01:30 2008	CHECKED RGD	REVISED -		SCALE: N.T.S.	SHEET NO. 2 OF 2 SHEETS	STA.	TO STA.	CONTRACT NO. 64C69			
		DATE 7/28/2008	REVISED -		FED. ROAD DIST. NO. 2 ILLINOIS FED. AID PROJECT							

