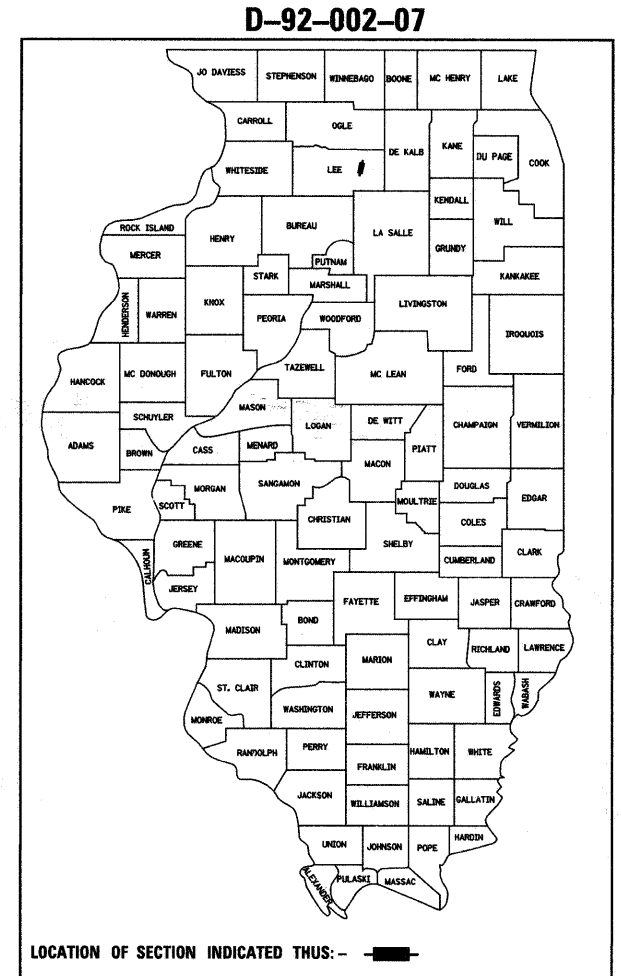


F.A.S. RTE.	SECTION	COUNTY	TOTAL SHEETS	SHEET NO.
1177	109T	LEE	15	1

STATE OF ILLINOIS
DEPARTMENT OF TRANSPORTATION
DIVISION OF HIGHWAYS
**PROPOSED
HIGHWAY PLANS**

FAS ROUTE 1177 (IL 251)
SECTION 109T
PROJECT RS-1177(112)
LEE COUNTY
C-92-050-09



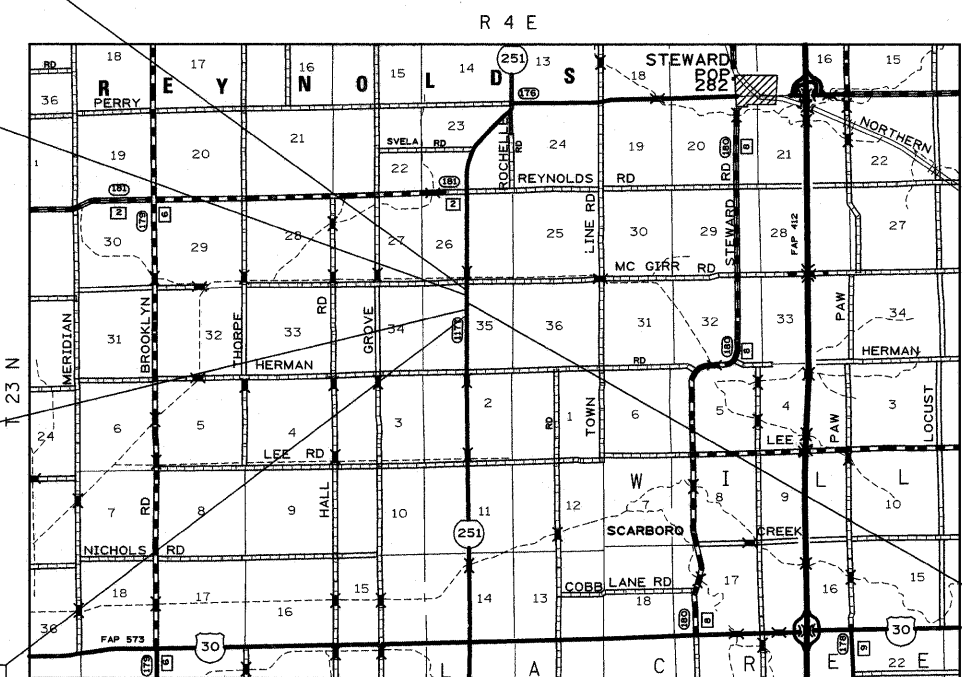
FOR INDEX OF SHEETS, SEE SHEET NO. 2
FOR LIST OF STANDARDS, SEE SHEET NO. 2

IMPROVEMENT ENDS
STA 775 + 45

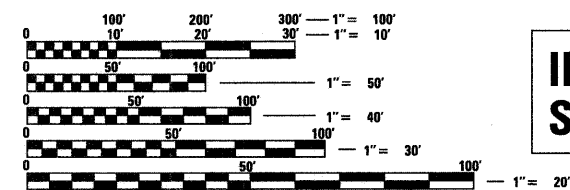
SECTION ENDS
STA 775 + 20

SECTION BEGINS
STA 774 + 91

IMPROVEMENT BEGINS
STA 774 + 65



BOX CULVERT
STA 775 + 04



REYNOLDS TOWNSHIP, SECTION 2
J.U.L.I.E.
JOINT UTILITY LOCATION INFORMATION FOR EXCAVATION
1-800-892-0123

NET LENGTH OF PROJECT = 30 FEET = 0.006 MILES
GROSS LENGTH OF PROJECT = 80 FEET = 0.015 MILES

STATE OF ILLINOIS
DEPARTMENT OF TRANSPORTATION
DIVISION OF HIGHWAYS
SUBMITTED OCTOBER 10 20 08
George F. Ryan
DEPUTY DIRECTOR OF HIGHWAYS, REGION ENGINEER
December 5, 20 08
Eric E. Harrel
INTERIM ENGINEER OF DESIGN AND ENVIRONMENT
December 5, 20 08
Christina M. Reed
DIRECTOR OF HIGHWAYS, CHIEF ENGINEER

**PRINTED BY THE AUTHORITY
OF THE STATE OF ILLINOIS**

SQUAD LEADER: DERRICK LOPEZ (815) 284-5930

PROJECT ENGINEER: REBECCA MARRUFFO

CONTRACT NO. 64C73